



## Agenda

**Regular Meeting of the Santa Fe  
MPO Technical Coordinating  
Committee  
February 24, 2025 at 1:30 PM  
Meeting Virtually**

---

### **Procedures for Santa Fe MPO Technical Coordinating Committee Meeting**

1. Call to Order
2. Roll Call
3. Approval of Agenda
4. Approval of Minutes
  - a. Approval of 9/23/24 TCC Minutes
5. Presentations
  - a. Architectural/Artistic Standards Bridges and Infrastructure NMDOT
  - b. Local Government Road Funds Application - NMDOT
6. Action Items
  - a. NM 599 & Camino Montoyas Intersection: Public Comment Review and Recommendations for Improvement Programming and Funding (MPO Erick Aune, NMDOT Javier Martinez)
7. Discussion Items
  - a. Update on MTP Update - Public Engagement and Technical Updates
  - b. SFMPO Annual Training Manual
  - c. Project Updates: Agencies
8. Matters from Staff
9. Matters from the Committee
10. Matters from the Chair

11. Next Meeting:

a. 03/24/25

12. Adjourn

Persons with disabilities in need of accommodations, contact the City Clerk's office at 955-6521, five (5) working days prior to meeting date.

**SANTA FE MPO TECHNICAL COORDINATING COMMITTEE  
MONDAY, SEPTEMBER 23, 2024, 5:00 PM  
MONICA ROYBAL CENTER  
ATTENDED IN PERSON AND VIRTUALLY**

**I. CALL TO ORDER**

The meeting of the MPO Technical Coordinating Committee was called to order by Bryce Gibson, Chair, at 1;30 pm on Monday, September 23, 2024, at the Monica Roybal Center, and was attended in person, and virtually.

**2. ROLL CALL**

**MEMBERS PRESENT**

Jacqueline Beam  
Brett Clavio  
Javier Martinez  
Jeanne Wolfenbarger  
Romella Glorioso-Moss  
Bryce Gibson, Chair

**MEMBERS ABSENT**

Daniel Alvarado  
Robert Frenier  
John Lovato  
Tomas Martinez  
Allison Long

**OTHERS PRESENT**

Eric Aune, Director, MPO  
Hannah Burnham, MPO  
Leah Yngve, MPO  
Jason Park, NMDOT

**3. APPROVAL OF AGENDA**

**MOTION** A motion was made by Ms. Glorioso-Moss, seconded by Mr. Clavio, to approve the agenda as presented.

**VOTE** The motion passed on a voice vote.

**4. APPROVAL OF MEETING MINUTES OF JUNE 27, 2024**

Ms. Glorioso-Moss said Tomas Martinez was present at the meeting.

Mr. Clavio said Jacqueline's last name is spelled Beam.

**MOTION** A motion was made by Ms. Glorioso-Moss, seconded by Mr. Clavio, to approve the minutes as amended.

**VOTE** The motion passed on voice vote.

**5. COMMUNICATIONS FROM THE PUBLIC**

None.

**6. DISCUSSION/ACTION ITEMS**

**A. REVIEW AND RECOMMEND: DRAFT 2025 TITLE VI PLAN UPDATE**

Mr. Aune presented the draft.

**MOTION** A motion was made by Mr. Clavio, seconded by Ms. Glorioso-Moss, to recommend approval of the Draft 2025 Title VI Plan.

**VOT4E** The motion passed on a voice vote.

**THE MEETING WAS ADJOURNED DUE TO CONNECTIVITY ISSUES AND AUDIO ISSUES.**

**B. REVIEW AND RECOMMEND 2025 PERFORMANCE MEASURE 1 SAFETY TARGETS/HIGHWAY SAFETY IMPROVEMENT PROGRAM**

Not heard.

**C. REVIEW AND RECOMMEND 2024 PERFORMANCE MEASURE 3 MID-PERIOD TARGET ADJUSTMENT SAFETY TARGETS**

Not heard.

**D. 2025 METROPOLITAN TRANSPORTATION PLAN UPDATE**

Not heard.

**E. MEMBER AGENCY PROJECT UPDATES**

Not heard.

**7. MATTERS FROM STAFF**

Not heard.

**8. MATTERS FROM THE BOARD**

Not heard.

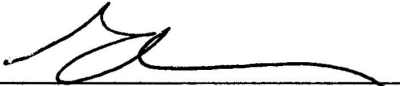
**9. NEXT MEETING: THURSDAY, NOVEMBER 4 21, 2024**

**10. ADJOURN**

There being connectivity and audio problems with the equipment, the meeting adjourned at 1:45 pm.

---

Bryce Gibson, Chair



---

Elizabeth Martin, Stenographer



# Santa Fe Metropolitan Planning Organization



## MPO SELF-CERTIFICATION

### Request to Regionally Prioritize for the Members of the Santa Fe MPO NM599 & Camino de los Montoyas Interim Safety Improvements for Funding and Implementation

The Santa Fe Metropolitan Organization Transportation Policy Board has met at a duly noticed public meeting on Thursday, February 27<sup>th</sup> at 5:00PM and made a formal recommendation as detailed in the attached Staff Report including Public Comment Exhibits.

2/27/25

\_\_\_\_\_  
Chair- Santa Fe MPO TPB

\_\_\_\_\_  
Date



## SFMPO Staff Report

Transportation Policy Board, February 27, 2025

Technical Coordinating Committee, February 24, 2025

### Safety Improvements NM 599 & Camino de Los Montoyos

**Matter of Approval:** Request to Regionally Prioritize for the Members of the Santa Fe MPO NM599 & Camino de los Montoyas Interim Safety Improvements for Funding and Implementation

**Background:** NM 599 is a 14.019-mile divided highway expressway also known as the Veterans Memorial Highway and the Santa Fe Relief Route. The NM 599 is significant as part of the road network traversed by vehicles transporting radioactive waste from Los Alamos National Laboratory (LANL) north of Santa Fe to the Waste Isolation Pilot Project (WIPP) in southern New Mexico (near Carlsbad). Much of the funding for construction of the route was supplied by the United States Department of Energy so that WIPP-bound waste from LANL would not have to pass through the center of Santa Fe. However, most of the traffic on the road is general public use and has nothing to do with WIPP waste, which is moved only at infrequent intervals in special convoys. Construction of the expressway took place over a period of several years in the 1990s and was completed in November 2000.

#### 2018 NM 5999 Re-Prioritization Plan

**Purpose:** “The need for this re-prioritization study is similar to that of the original study; namely, the NM 599 relief route was constructed to ultimately be an access-controlled freeway facility with interchange access. The NM 599 facility currently has a mix of freeway and arterial characteristics with both interchanges and at-grade intersections. *This mixture of facility types leads to increased risk for crashes, large variances in operating speeds, and mixed driver perceptions on how to negotiate the facility.* This is especially true for drivers who are using the facility as a bypass, as these drivers may not be as familiar with the facility as local drivers.”

In 2018 Santa Fe County in coordination with the Santa Fe MPO and NMDOT District 5 led an effort to implement interim safety measures as the intersection of Via Vetranos. This was due to crash fatalities and led to the elimination of left-turn and through movements. Only right-in/

left-in/right-out turn movements are now allowed. The goal of this project was to eliminate the highest crash-risk movements, the minor street left-turn and through movements which have led to the recent crash fatalities. Since implementation in 2019 safety has improved significantly and no fatalities have been reported.

With that background, interim safety improvements to Camino de Los Montoyas would be very similar in design with the same goal.

In November of 2024 the Santa Fe MPO was contacted by a constituent of Santa Fe County who detailed safety concerns and experiences regarding the intersection. The MPO held a meeting with NMDOT District 5 staff and City Engineering Staff to discuss possible paths forward to fund/program and implement the interim safety measures. Options from that meeting are as follows:

- A. Support MPO staff with the participation in a public comment meeting near the intersection.
  - a. This occurred on Wednesday, January 29<sup>th</sup> 2025 at the Unity Church. Approximately 40 participants showed up for the 90 minute meeting providing comments and support for safety measures. Though they all did not like the idea of having access restricted via a right-in and right-out modifications most people consented to the need for safety measures.
- B. Invite the MPO Transportation Policy Board to make a formal request to NMDOT District 5 to prioritize “Interim Safety Measures” as detailed in the 599 Reprioritization Study for funding, programming and implementation.
- C. NMDOT District 5 to apply for Highway Safety Improvement Program Funds (HSIP), federal funds dedicated to improving safety, and if approved program and implement the modifications. An alternative is for the City of Santa Fe and/or Santa Fe County to request State Transportation Project Funds and take the lead on the project.

Public comments and information are attached as exhibits to this staff report and Self-Certification.

**Public Comment Exhibit A: E-Mail Communications**

**From:** Ruth <rfnutt@sisna.com>

**Subject:** Ruth Nutt Notes about 1/29/25 Road Safety Mtg 599/Montoyas

**Date:** January 29, 2025 at 11:46:11 AM MST

**To:** Shawn Parell <ShawnParell@gmail.com>

**Cc:** Ruth Nutt <rfnutt@sisna.com>

Hi Shawn,

Attached is a copy of my notes about the 599/Montoyas Road Safety meeting I gave you before the meeting today.

I really appreciate the effort to improve the situation at this dangerous intersection. Hopefully, it will also result in improving the safety of living on Camino Des Los Montoyas. Let me know if you have any questions or want any further information. Thank you,

Ruth

**1-29-25 599/Montoyas Rd Safety Mtg**

From: Stephen and Ruth Nutt, >30yrs owner-residents of Camino des los Montoyas

To: Robert Holmes, TRA Communications  
Erick Aune, Santa Fe MPO Director

Re: Wed 1/29/25 Public Meeting: 599/Camino des los Montoyas Safety

Due to health reasons, I, Ruth Nutt, have to cancel my intended attendance at the Public Safety Mtg on 1/29/25. We are very interested and appreciative of the Tano Road Association's and NMDOT's attempts and plans to improve the safety of the 599/Camino des los Montoyas intersection.

I want to point out some problems at the intersection, which I experienced over the many years as a resident of Camino des los Montoyas:

**599** has a speed limit of 55 mph, which is not policed and therefore exceeded by most drivers; excessive speed of traffic endangers the crossing of the highway;

**Visibility** of East-West 599 traffic is very short and lowers safety to cross highway to center strip;

**Right turn onto 599** is a safety risk because of limited visibility of East-West and fast 599 traffic

**Camino des los Montoyas** has developed into a **main thoroughfare** between Tano Rd and 599 allowing traffic on the road for commuters, service contractors, construction crews and vehicles such as >5 ton trucks, huge earthloading trucks, pickups, backhoes, vans. This permit of increased traffic on the road has reduced the safety at 599 intersection enormously over the years.

**Camino des los Montoyas** has a speed limit of 25mph, which has not adhered to, nor policed for over 30 yrs. The 1.7 mile stretch of road traverses open space and is a safety risk to bicyclists, walkers and drivers who try to adhere to the posted speed limit (commuting moped driver stops and pulls over to side to let impatient drivers pass; attempts to adhere to speed limit have resulted in being passed by impatient drivers in cars, SUVs, pickups and even big trucks on the double yellow lined road and near curves with no visibility of oncoming traffic.)

**The increased traffic and excessive driving violations on Camino des los Montoyas and 599 have decreased greatly the safety of the intersection.**

I appreciate and am grateful to NMDOT for their attempt to improve the situation.

Respectfully,  
Ruth Nutt

**To Whom It May Concern:**

Santa Fe Metropolitan Planning Organization

New Mexico Department of Transportation

737 Agua Fria St, Santa Fe, NM 87506

**Subject:** Request for Safety Intervention at NM 599 and Camino de Las Crucitas

Dear Erick,

I am writing to express concern about the safety of the intersection at NM 599 and Camino de Las Crucitas in Santa Fe, NM. This intersection is a critical access point for local residents and serves as a connector to major highways. However, its current design poses significant risks to drivers, cyclists, and pedestrians.

Recent crash data and anecdotal evidence from community members highlight this intersection as a danger zone. According to [reports](#), NM 599 is a mix of freeway and arterial characteristics, leading to unpredictable traffic flow and heightened crash risks, particularly at at-grade intersections like Camino de Las Crucitas. These conditions make navigating this intersection confusing and hazardous for local and regional travelers.

Community members are deeply concerned about this issue. As a nearby resident, I have witnessed more near-catastrophic-misses at this intersection than anywhere else in Santa Fe. Neighbors report that they do not permit teenage drivers in their households to drive across the intersection because of how confusing and dangerous it is to navigate, and instead insist that they make their way around the back roads to get into town.

Last winter, I was approaching the intersection from my nearby home on Calle San Acacia (so, decelerating down the hill at Unity Way) when my car began sliding on ice toward the intersection. I quickly diverted off the road and crashed into a snowbank to avoid a catastrophic accident. My two young children in the backseat were unharmed that day but sincerely terrified.

To address this pressing issue, I urge you to implement a stoplight or other safety measures at this intersection. This solution would:

1. **Enhance Safety:** A stoplight would regulate traffic flow, significantly reducing the likelihood of accidents.
2. **Improve Efficiency:** Controlled access would help manage congestion during peak times, benefiting commuters and residents alike.

3. **Provide Immediate Relief:** A stoplight offers an effective short-term solution while larger infrastructure projects may take years to plan and execute.

I am confident that implementing a stoplight at this location would align with the goals outlined in the NM 599 Re-Prioritization Plan and demonstrate a commitment to public safety and accessibility, and I would appreciate the opportunity to discuss this matter further. I would be happy to provide additional data or coordinate with other community members to support this request.

Thank you for your attention to this critical issue. I look forward to your response and the possibility of working together to make our roads safer for all who use them.

Sincerely,

Shawn Parell

Jane Kauvar<jfkauvar@gmail.com>

To:AUNE, ERICK J.

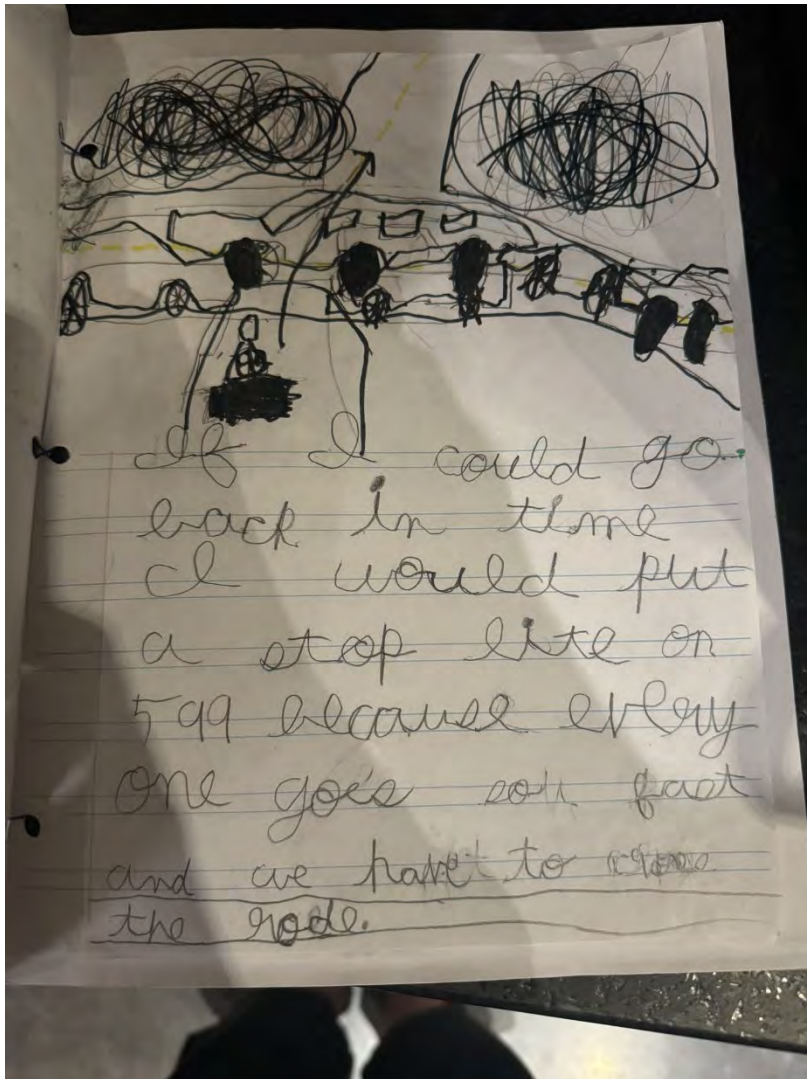
Wed 1/29/2025 3:13 PM

You replied on Wed 1/29/2025 4:48 PM

CAUTION: This email originated from outside of the organization. Do not click links or open attachments unless you recognize the sender and know the content is safe.

Thank you, for getting back to me and I appreciate that you held the meeting. I felt it was productive and well-run. I also agree with trying to get Google to remove directions that include crossing 599 as one stopgap measure.

Jane



Thanks, Erick. I'm grateful to you and your team. Looking forward to moving forward in January.

And in the meantime, here's my 7-year-old son's response to his teacher asking what he would do if he could go back in time...

"If I could go back in time I would put a stoplight on 599 because everyone goes so fast and we have to cross the road."

Shawn

Dear Mr. Aune

My name is Tom Wise. I live at 114 Thundercloud Road Santa Fe, NM 87506. My phone is 505-780-8927.

I am unable to attend Wednesday's meeting because I will be at a prior appointment. I am still recovering from a near fatal car crash on February 4, 2024 at the intersection of Camino de las Montoyas and Highway 599.

Attached is a photo of that car crash. I was westbound on 599 when the other driver attempted to cross 599 northbound on Camino de las Montoyas. She t-boned my vehicle with such force that my car was completely forced off the road and into the ditch. Her car spun 180°. Her passenger suffered a crushed collarbone. I was knocked unconscious and suffered a severe concussion which I am still recovering from with post-concussive syndrome. I also injured my left arm, my upper back, and my left knee.

Until the county and state are willing to put in an overpass at this intersection, it definitely needs to be redesigned in the same way Via Veteranos was changed, i.e. right turn off / right turn on / no left turn / no at grade crossing.

This remains the only at grade crossing from the intersection of 599 and Highway 84/285 all the way down to 599 and I-25. This death hazard needs to be fixed immediately. I consider myself lucky to be alive after the crash I was the victim of.

Thank you,

Tom Wise



Tom Wise<tomwise.santafe@gmail.com>

To:AUNE, ERICK J.

Mon 1/27/2025 10:02 AM

You replied on Mon 1/27/2025 2:07 PM

CAUTION: This email originated from outside of the organization. Do not click links or open attachments unless you recognize the sender and know the content is safe.

Erick,

I not only authorize you to use the image and my testimony, I STRONGLY encourage you to do so.

I nearly lost my life in this crash. The decision makers need to understand that. The decisions they make have a real and immediate impact on the lives, literally, of the citizens they serve.

I would be happy to attend the board meeting on the 27th if you think that would help. Please send me the details.

And our condolences for your friend. Last year when we read about the bike rider death in Galisteo we sold our road bikes. Reading about your friend this past week my wife remarked on it and our decision to no longer ride on the roads. Such a terrible shame and a senseless loss.

Regards,

Tom

rwhab<rwhab@cybermesa.com>

To:AUNE, ERICK J.

Wed 12/18/2024 2:31 PM

You replied on Wed 12/18/2024 3:10 PM

CAUTION: This email originated from outside of the organization. Do not click links or open attachments unless you recognize the sender and know the content is safe.

Erick, Thanks for the notice. Appreciate your concern about our privacy.

Would you kindly pass this along to the other leaders in this effort?

The reply of 30 people is an indication of the high degree of concern about this intersection. Almost monthly (or perhaps more often), there is glass and debris on the roadway, indicative of some sort of accident. From your earlier memo, I infer that there may be some short-term responses to a longer-term challenge (e.g. funding). Let's all get on with some short-term mitigation. I believe that what you would have heard Friday, from the responders, is the same thing: band-aids are better than open wounds. A bit more safety is likely to save some lives... I feel certain that all three jurisdictions can agree on some simple, short-term ideas.

Thanks.

**Dick Haber**

Yuki Murata<yuki@moderngoods.com>

To:AUNE, ERICK J.

Cc:Chris Long <chriswlong73@gmail.com>;Shawn Parell <shawnparell@gmail.com>

Thu 12/12/2024 12:52 PM

CAUTION: This email originated from outside of the organization. Do not click links or open attachments unless you recognize the sender and know the content is safe.

Hello Erick,

We received some very informative correspondence from our neighbor Shawn Parell regarding the work SFMPO is doing to study the risk factors at the 599/Crucitas/Montoyas intersection.

Having lived on Calle San Acacia since 2007, anecdotally, I can attest to the danger posed by that intersection.

Unfortunately, my husband and I will be out of town this December 20th, but please keep us informed if and how we can advocate further to have the DOT prioritize this intersection.

Many thanks,  
Yuki Murata

--

yuki murata  
36 calle san acacia  
santa fe, nm 87506

**From:** johncarterbiggs@yahoo.com <johncarterbiggs@yahoo.com>  
**Sent:** Thursday, December 12, 2024 12:37 AM  
**To:** AUNE, ERICK J. <ejaune@santafenm.gov>  
**Cc:** 'Shawn Parell' <shawnparell@gmail.com>; 'Eileen Biggs' <eileen\_texas@yahoo.com>  
**Subject:** Intersection of 599/Camino Las Montoyas

CAUTION: This email originated from outside of the organization. Do not click links or open attachments unless you recognize the sender and know the content is safe.

Erick:

I wanted to follow up with your conversations with Shawn earlier this week. Unfortunately, we won't be able to join the meeting – I'm out of town on business.

However, I did want to weigh in on the safety risks at that intersection. I won't use it when heading towards town – I end up going Tano Road to Ridgetop to avoid the blind curve. I've had one too many close calls when turning left at the intersection.

Anything we can do to mitigate to risk would be greatly appreciated.

Best,

Jack Biggs

3 Calle San Acacia

Public Comment Exhibit B: Jan. 29<sup>th</sup> Public Meeting Notice – Santa Fe New Mexican Sunday Jan. 25<sup>th</sup>.



# Public Meeting

## 599 & Camino De Los Montoyas Intersection Safety



**When:** Wednesday, Jan. 29<sup>th</sup> 11:00AM to 12:30PM

**Where:** Unity Santa Fe – 1212 La Chuchara Rd 

**Purpose:** Gather Input regarding proposed NMDOT Safety Improvements

City/County/NMDOT Technical Staff Invited



NM599 Reprioritization Plan: Final Report  
Download Link:

<https://santafempo.org/resources/santa-fe-corridor-studies/>

Contact:

Erick Aune, Santa Fe MPO  
Director

[ejaune@santafenm.gov](mailto:ejaune@santafenm.gov)

[www.santafempo.org](http://www.santafempo.org)



599 Camino de Los Montoyas  
 Safety Meeting  
 Wednesday, January 29, 2025  
 Unity Santa Fe, Santa Fe, NM  
 Sign-in Sheet



Santa Fe Metropolitan Planning Organization



Name	Address	Email
Phyllis Arlow Don Seeger	47 Cam. Don Patron	phyllisarlow@gmail.com
William Fisher + JUDY FISHER	6 Vuelta de la TUSA	judy@thefishers.com
LORREY MUELLENBERG	5 RANCHO ESTE	LMUELLENBERG@G.COM
CHARLENE MUELLENBERG	FRANCHO ESTE	CABERN@PACBELL.NET
CAROLINA PORTAGO Rev.	960 1/2 CAM. SANTANDEK	CAPABILITYRED29@GMAIL.COM
Liz Luoma	2500 Sawmill Rd, #313 S. Fe, NM 87505	Revliz@unitysantafe.org
James Borveg	#5 Av de Sevilla	James@kolvegeconstruction.com
Jennifer Medley	84 County Rd 74	jmedley111@yahoo.com
Steve + Angie Kienham	48 C. San Martin	steve@sftitleco.com
Ryan Ward	SFC	rward@santafecountynm.gov
nate crail	SFCOUNTY	NCRAIL@SANTAFECOUNTYNM.GOV
Joseph Scala	SF County	jscala@santafecountynm.gov
JIM MURPHY	SF COUNTY	JMURPHY@GOLDENGATE.NET

599 Camino de Los Montoyas  
 Safety Meeting  
 Wednesday, January 29, 2025  
 Unity Santa Fe, Santa Fe, NM  
 Sign-in Sheet



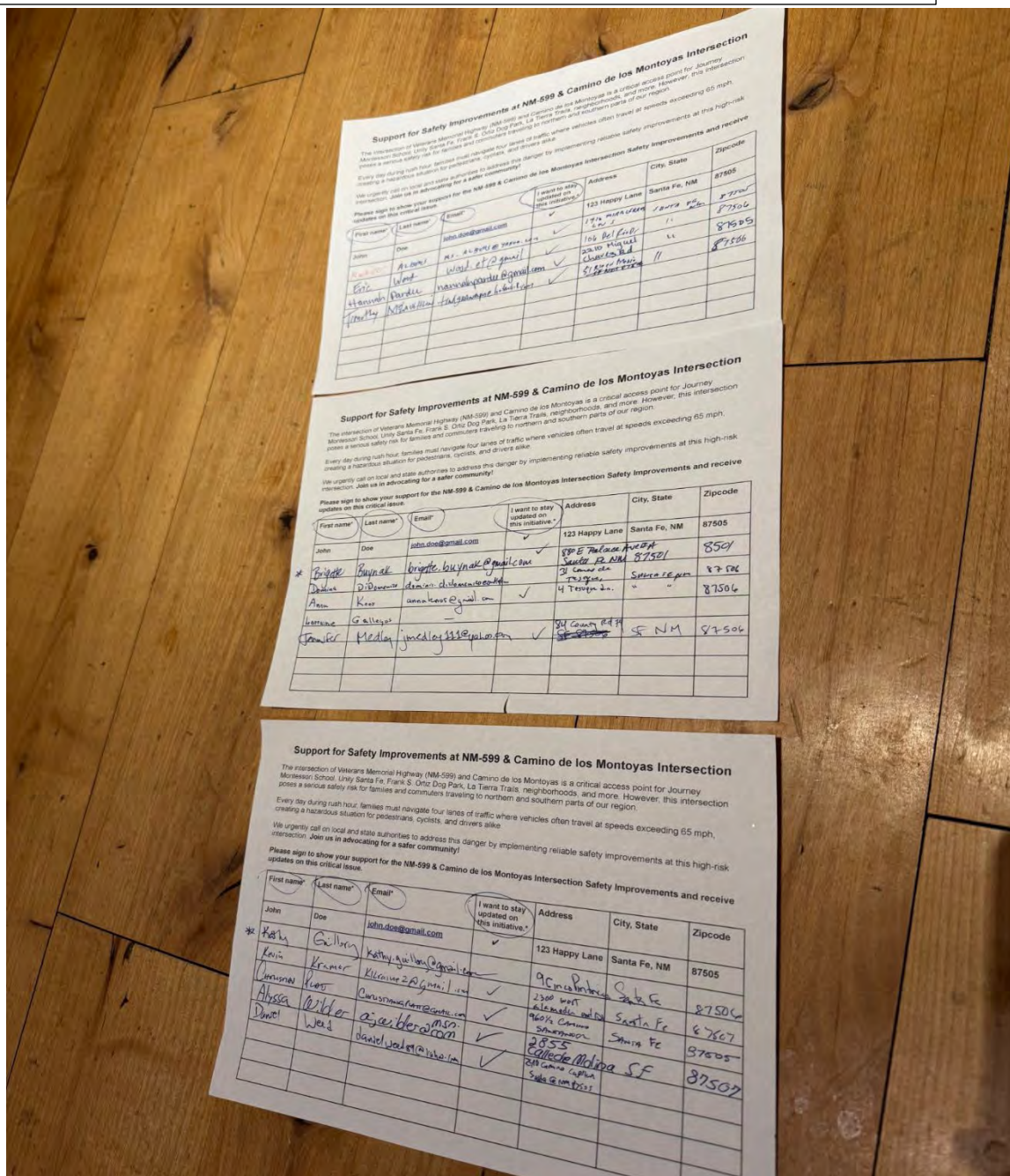
Santa Fe Metropolitan Planning Organization



Name	Address	Email
Paul Lokke	6 Montecito, S.F.	lokke.paul@gmail.com
Brett Clavio	240 Grant Ave.	gbclavio@santafecountynm.gov
Gilberto Garcia	#8 Milagro Rd	gilberto-g-g@hotmail.com
Katy Skem	14 Alamo Creek Dr	
Jane Kauvar	8 Alamo Creek Dr	
Bob Gaylor	333 Montezuma Ave	bob@sb-associates.net
Ben Woodbury	93 Tano Norte	woodbury2@icloud.com
Javier Martinez	7015 Cerrillos Road	javier.martinez@dt.nm.gov
YUKI MURATA	36 Calle San Acacia Santa Fe, NM 87506	YUKI@moderngoods.com
Chris Long	36 Calle San Acacia Santa Fe NM 87506	Chriswlong73@gmail.com
Bobbi Heller	154 Tano Rd	santafecats@yahoo.com
WAYNE SWINSON	65 CAMINO DE LOS MONTOYAS	SANTA FE, WAYNE.SWINSON@GMAIL.COM.

<u>NAME</u>	<u>ADDRESS</u>	<u>EMAIL</u>
Chris Foster	24 SAN RAFAEL DR	CHRISTIAN.FOSTER@gmail.com
Oshana Higginson	3 Montecito 92506	heavenZerth@gmail.com
Debbie Dale	28 Heartstone Dr	D6dale@gmail.com
Russell Brott	25 Calle San Acacia	russellbrott@gmail.com
BURT LELAND	7 Crossroads Ct	BURT.LELAND@gmail.com
Helen Swinson	65 Camino delos Montoyas	Helen.Swinson65@gmail.com
CHARLES MAGEE	3 AVENIDA de SEVILLA	NACMAGEE@gmail.com
S. BARTHELME	28 Calle San Acacia	steve@sacinj.com
P. Samaha	28 Calle San Acacia	peppy@sacinj.com
N. Zorensky	8 Tano Vida, Santa Fe	nezorensky@gmail.com
ED ZORENSKY	" " " "	edzorcusky@gmail.com
LEONARD ROY	19 TANO TRAIL	SKLROY@aol

**Public Comment Exhibit D: Neighborhood Email Lists – Citizens Supporting Safety Improvements and Interested in Updates.**



## Support for Safety Improvements at NM-599 & Camino de los Montoyas Intersection

The intersection of Veterans Memorial Highway (NM-599) and Camino de los Montoyas is a critical access point for Journey Montessori School, Unity Santa Fe, Frank S. Ortiz Dog Park, La Tierra Trails, neighborhoods, and more. However, this intersection poses a serious safety risk for families and commuters traveling to northern and southern parts of our region.

Every day during rush hour, families must navigate four lanes of traffic where vehicles often travel at speeds exceeding 65 mph, creating a hazardous situation for pedestrians, cyclists, and drivers alike.

We urgently call on local and state authorities to address this danger by implementing reliable safety improvements at this high-risk intersection. **Join us in advocating for a safer community!**

Please sign to show your support for the NM-599 & Camino de los Montoyas Intersection Safety Improvements and receive updates on this critical issue.

First name*	Last name*	Email*	I want to stay updated on this initiative.*	Address	City, State	Zipcode
John	Doe	<a href="mailto:john.doe@gmail.com">john.doe@gmail.com</a>	<input checked="" type="checkbox"/>	123 Happy Lane	Santa Fe, NM	87505
ROBERT	ALBERS	RS-ALBERS@YAHOO.COM	<input checked="" type="checkbox"/>	1716 MIRACERRAS LN S	SANTA FE NM	87505
Eric	Wood	wood.et@gmail	<input checked="" type="checkbox"/>	106 Pel Rio Dr	10	87506
Hannah	Pardue	hannahpardue@gmail.com	<input checked="" type="checkbox"/>	2210 Miguel Chavez Rd	11	87505
Timothy	McLAUGHLIN	TMGRANDPA@HOTMAIL.COM	<input checked="" type="checkbox"/>	51 RIO EN MORIS <del>SF NM 87506</del>	11	87506

## Support for Safety Improvements at NM-599 & Camino de los Montoyas Intersection

The intersection of Veterans Memorial Highway (NM-599) and Camino de los Montoyas is a critical access point for Journey Montessori School, Unity Santa Fe, Frank S. Ortiz Dog Park, La Tierra Trails, neighborhoods, and more. However, this intersection poses a serious safety risk for families and commuters traveling to northern and southern parts of our region.

Every day during rush hour, families must navigate four lanes of traffic where vehicles often travel at speeds exceeding 65 mph, creating a hazardous situation for pedestrians, cyclists, and drivers alike.

We urgently call on local and state authorities to address this danger by implementing reliable safety improvements at this high-risk intersection. **Join us in advocating for a safer community!**

**Please sign to show your support for the NM-599 & Camino de los Montoyas Intersection Safety Improvements and receive updates on this critical issue.**

First name*	Last name*	Email*	I want to stay updated on this initiative.*	Address	City, State	Zipcode
John	Doe	<a href="mailto:john.doe@gmail.com">john.doe@gmail.com</a>	✓	123 Happy Lane	Santa Fe, NM	87505
* Brigitte	Buynak	<a href="mailto:brigitte.buynak@gmail.com">brigitte.buynak@gmail.com</a>	✓	880 E Palace Ave #A Santa Fe, NM		8501
Dominic	DiDomenico	<a href="mailto:dominic.didomenico@att.net">dominic.didomenico@att.net</a>		31 Camos de Tesque	Santa Fe, NM	87506
Anna	Knos	<a href="mailto:annaknos@gmail.com">annaknos@gmail.com</a>	✓	4 Tesque Ln.	" "	87506
Lorraine	Gallegos	-				
Jennifer	Medley	<a href="mailto:jmedley111@yahoo.com">jmedley111@yahoo.com</a>	✓	84 County Rd #1 <del>SF 87506</del>	SF NM	87506



# 599 & Camino de los Montoyas Intersection - Constituent List

File Edit View Insert Format Data Tools Extensions Help

Menus 100% \$ % .0+ .00 123 Defaul... - 10 + B I

A1

	A	B	C	D	E
1					
2	<b>Name</b>	<b>Email</b>	<b>Notes</b>		
3	Shawn Parell	shawnparell@gmail.com	CSA email		
4	Russell Brott	russellbrott@gmail.com	CSA email		
5	Monica Scarborough	scarboroughx3@gmail.com	CSA email		
6	Anna Hastings	anskadanska@gmail.com	CSA email		
7	Rob Hastings	rob.hastings.3@gmail.com	CSA email		
8	CB	howdysantafe@msn.com	CSA email		
9	Peggy Samaha	peggy@sacinj.com	CSA email		
10	Yuki Murata	yuki@moderngoods.com	CSA email		
11	Chris Long	chrislong73@gmail.com	CSA email		
12	Jack Biggs	johncarterbiggs@yahoo.com	CSA email		
13	Eileen Biggs	eileen_texas@yahoo.com	CSA email		
14	Helen Swinson		TSA HOA		
15	Dan Monroe	dmpem@mac.com	15 Montecito - email		
16	Nancy Henderson	nhendersonp@gmail.com	email		
17	Sandra Lynn Burnett	sburn10@gmail.com	email		
18	Ralph Stuart	ralphstuart@mac.com	email		
19	Mac Kenley	mcdowellkenley@gmail.com	email		
20	Steve Orlik	sorlik08@gmail.com	Roads Chair La Mariposa HOA - email		
21	Carl Gable		Next Door (fat tire society)		
22	Jay W		Next Door		
23	Jones David		Next Door		
24	Joe Roybal		Next Door		
25	Alyssa Latuchie	alyssa.latuchie@gmail.com	Journey		
26	Dick Haber	rwhab@cybermesa.com	TRA HOA		
27	Robert Holmes		TRA Communications		
28	Lauren Kahn	lauren@santafatiresoci...	fat tire society		
29					
30					
31					

# Santa Fe Metropolitan Planning Organization

## Transportation Policy Board and Technical Coordinating Committee Training and Orientation Manual

January 17, 2025



[WWW.SANTAFEMPO.ORG](http://WWW.SANTAFEMPO.ORG)

P.O. Box 909, Santa Fe, NM 87504-0909 737 Agua Fria Street

Santa Fe, 87501 Updated: 01/17/25

# Table of Contents

I. Purpose Statement: Manual .....	3
II. Santa Fe MPO Website .....	3
III. Organizational Structure (Joint Powers Agreement and By-Laws).....	4
IV. Santa Fe MPO Background.....	5
V. Santa Fe MPO Planning Area Boundary .....	5
VI. Surface Transportation Reauthorization Legislation: FAST Act and MPOs.	6
VII. Santa Fe MPO Purpose Statement .....	7
VIII. Eight Principles of MPO Decision Making .....	8
IX. The Top Four Programs and Plans of the MPO.....	9.....
i. 2015—2040 Metropolitan Transportation Plan (MTP)	
ii. Transportation Improvement Program (TIP)	
iii. Public Participation Plan (PPP)	
iv. Unified Planning Work Program (UPWP)	
X. The Heroes and Heroins of the MPO.....	10
i. Bicycle Master Plan (BMP)	
ii. Pedestrian Master Plan (PMP)	
iii. Public Transit Master Plan (PTMP)	
XI. 0-2045 MTP Executive Summary.....	11
XII. Additional Resources Specific to MPOs .....	13

Click the YouTube link  
for an 11 minute MPO  
Planning Process Video!



# The Santa Fe MPO is...



City of Santa Fe



Santa Fe County



Pueblo of Tesuque



NMDOT

## I. PURPOSE STATEMENT

The Santa Fe Metropolitan Planning Organization (MPO) has been serving the greater Santa Fe metropolitan area since 1982, providing valuable transportation planning services to the locally elected officials and the citizens of its member agencies. **The MPO decides on funding allocations for planned transportation projects within the MPO Planning Area.**

The purpose of this manual is to serve as a tool and resource to both the newly appointed and experienced MPO Policy Board members and Technical Coordinating Committee members. **The manual is designed to be an interactive document with quick electronic reference links to key concepts,** documents and resources. The manual may be customized to meet individual needs. It is our goal not to overwhelm the users of this document with voluminous amounts of material but highlight what we believe are the most significant elements that MPO decision makers would benefit from being fully informed.

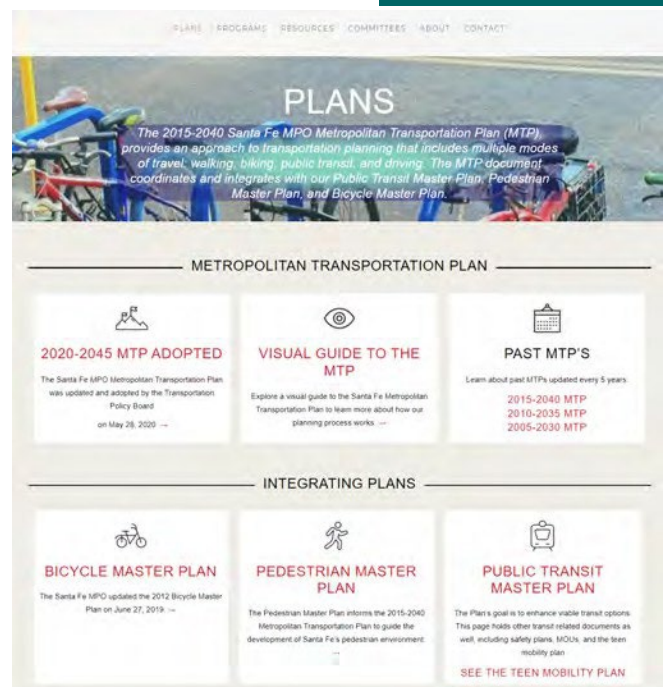
## II. SANTA FE MPO WEBSITE

**WWW.SANTAFEMPO.ORG**

The Santa Fe MPO website has been deliberately developed to place vital information about the MPO at the finger tips of all users including elected officials, staff and the general public. The website is kept current with up-to-date materials as well as archival material for reference purposes. We encourage each member to familiarize themselves with the site

**Why Your Job is Important!**

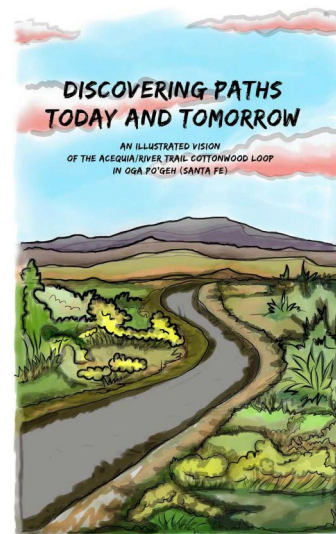
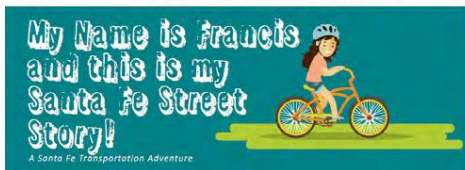
- Transportation Planning in the United State is undergoing a vast transformation. Moving from a project-by-project approach to a comprehensive approach based on a clear vision about a community's future.
- You are part of that change and a key player in the future of this community.



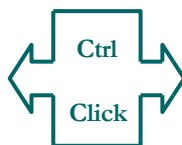
### III. ORGANIZATIONAL STRUCTURE : BY WHAT POWERS DO WE EXIST?



**SANTA FE MPO**  
 PRE-TEEN AND TEEN INDEPENDENT TRANSIT AND MOBILITY PLAN  
 Adopted February 23, 2017



#### [JOINT POWERS AGREEMENT \(JPA\)](#)



#### [MEMBERSHIP BY-LAWS and OPERATING PROCEDURES](#)

You may view the most recent JPA by clicking on the link above. By the nature of the JPA, where each of the member agencies mutually agree to continue form the MPO with associated terms, including:

1. Recognition of its “authority” via federal enabling legislation or Title 23 CFR Part 450 and Title 49 CFR Part 613)
2. Purposes;
3. Organization;;
4. Planning Data;
5. Planning Area;
6. Budget and Funding; and
7. Terms

Federal regulations and the MPO JPA establish the operational and procedural requirements for the MPO. The Bylaws establish guidance for issues pertaining specifically to the MPO that are not otherwise addressed in other documents.

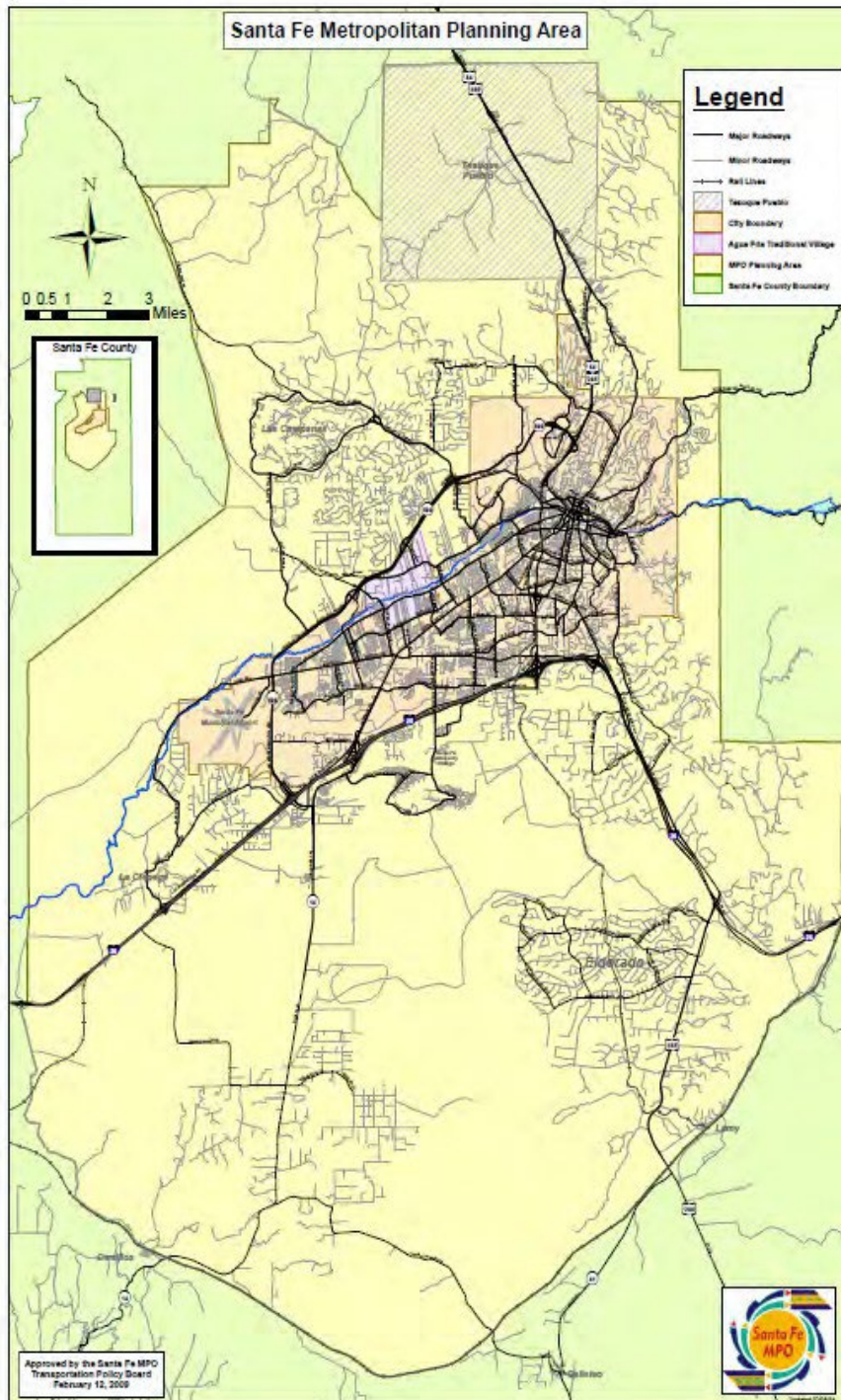
1. Authority; (JPA)
2. Membership/Alternates/Officers;
3. Meetings/Quorum/Voting Procedures;
4. Oversight/Tech Cord Committee/Staff/
5. Amendment Process

It is recommend that all members review the JPA to fully understand the commitment your representation brings to the table.

## IV. SANTA FE MPO BACKGROUND

When the United State Congress passed the [Federal-Aid Highway Act of 1962](#) they included a declaration that “*the Secretary (of Transportation) shall not approve any program for projects in any urban area of more than fifty thousand population unless he finds that such projects are based on a continuing comprehensive transportation planning process carried on cooperatively by the State and local communities.*”

The Santa Fe Metropolitan Area gained MPO status in 1982 by the federal government when the population of the metropolitan area reached 50,000, the same year the Commodore 64, 8-bit home computer was launched.



## V. PLANNING AREA BOUNDARY:

The Santa Fe MPO Planning Area is a contiguous boundary “likely to become [urbanized](#) within the twenty year forecast period covered by the [2020-2045 Santa Fe MPO Metropolitan Transportation Plan.](#)”

The [Santa Fe 2020 Census Urbanized Area Population](#) was 94,241 with 47,331 housing units and 46.8 sq miles. The [MPO Planning Area](#) covers approximately 25% of Santa Fe County’s land area and includes 80% of its population (Planning Area Population = 125,865, Santa Fe County Population = 151,946)

[For details of the origins of MPO Planning Areas please click here.](#)

### Why Your Job is Important!

- The demographics of our metro area are ever changing. The Southside has the fastest growing census tracts with a high percentage of families. Overall Santa Fe is an aging demographic and travel patterns are slowly shifting away from the single passenger vehicle.
- Keeping pace with these changes is critical to meeting area needs!

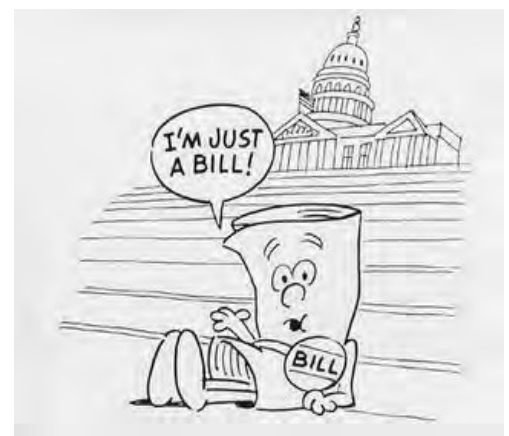
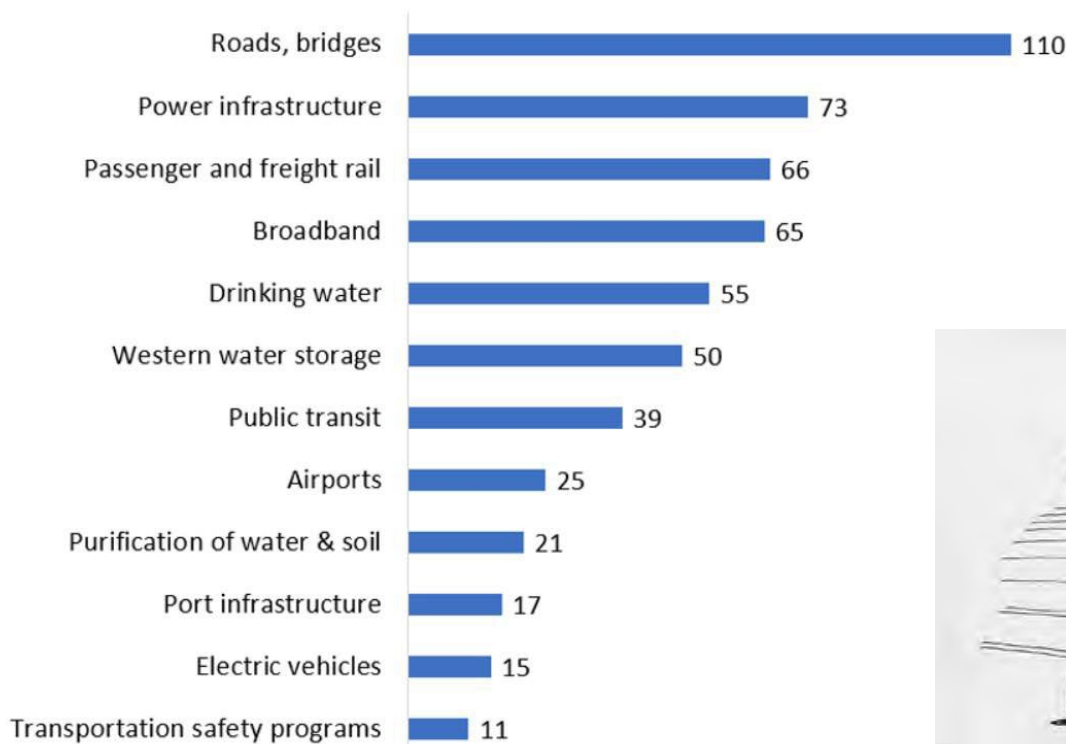
## VI. SURFACE TRANSPORTATION REAUTHORIZATION LEGISLATION: IIJA and MPOs

On November 15, 2021, President Biden signed the Infrastructure Investment and Jobs Act (IIJA) Public Law 117-58, also known as the “Bipartisan Infrastructure Law” into law. It is the largest long-term investment in our infrastructure and economy in our Nation’s history.

It provides \$550 billion over fiscal years 2022 - 2026 in new Federal investment in infrastructure detailed below.



### Infrastructure Investment and Jobs Act (\$ Billion)



## VII. SANTA FE MPO PURPOSE STATEMENT

The purpose of the Santa Fe MPO is to create a forum for transportation decision making in the metropolitan planning area. The Santa Fe MPO is responsible for:

- Facilitating cooperation, consistency, and connectivity between all transportation planning efforts within the Santa Fe metropolitan area
- Promoting a multi-modal, regional transportation system that is safe and energy and fiscally efficient
- Maximizing [community connectivity](#)
- Serving the mobility needs of all citizens
- Existing in harmony with the environment
- The MPO ensures proper spending of federal funds and use federal match requirements for projects of regional significance.

**This is accomplished by following 5 core functions:**

1. Establish and manage a fair and impartial setting for decision making;
2. Identifying and evaluating alternative transportation improvement options;
3. Updating the Metropolitan Transportation Plan (MTP);
4. Managing the Transportation Improvement Program (TIP); and
5. Involving the public.

### BREAKING DOWN THE PURPOSE

Understand that the MPO is a federally mandated and federally funded transportation policy organization and going back to the Federal-Aid Highway Act of 1962, Congress created MPOs in order to ensure that existing and future expenditures for transportation projects and programs are based on a “continuing comprehensive planning process carried on cooperatively by States and local communities.” As an MPO member, you make key decisions on [multimodal](#) transportation investments for your constituents and for the region.

- Transportation investment means allocating scarce federal and other transportation funding resources appropriately;
- Planning needs to reflect the region’s shared vision for its future;
- Adequate transportation planning requires a comprehensive examination of the region’s future and investment alternatives; and
- An MPO is needed to facilitate collaboration of governments, interested parties and residents in the planning process.

A “continuing comprehensive planning process” is reflected in the development and regular updates (every 5 years) to the Santa Fe Metropolitan Transportation Plan. The cooperative element can be seen by the detailed planning processes carried out by the Santa Fe MPO and the New Mexico Department of Transportation.

**Why Your Job is Important!**

How transportation is defined and measured can affect which solutions are considered best.

Your challenge is to balance impacts of vehicles with impacts of transit service quality, bicycling, walking and land use accessibility.

The MPO is tasked with evaluating various perspectives that have significant impacts on the future of our community.

Elements described in this manual are in place to help you make comprehensive and informed

## VIII: THE EIGHT PRINCIPLES OF THE MPO DECISION MAKING PROCESS



**As an MPO decision maker, federal policy requires that the following be considered when you select projects and programs.**

1. Enhance the integration and connectivity of the transportation system across and between modes for both people and freight .
2. Protect and enhance the environment, promote energy conservation, improve quality of life, and promote consistency between transportation improvements and State and local planned growth and economic development patterns.
3. Increased accessibility and mobility of people and freight.
4. Emphasize the preservation of the existing transportation
5. Promote efficient system management and operation.
6. Increase transportation safety for motorized and non-motorized users.
7. Support economic vitality (especially by enabling global competitiveness, productivity, and efficiency).
8. Increase transportation security for motorized and non-motorized users.

Why your job as an MPO Board Member is important!

“Transport planning is important because it shapes the way we live and work and can have strong, long-term impacts on the economy, the environment and the quality of peoples’ lives. It is also important because, once in place, it can be very difficult to change.”

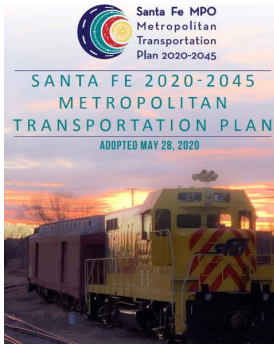
*International Forum for Rural Transport and Development*

***Given the importance of the above principles when considering financial investments and plans, how do we do we honor them? ...next page please.***

# IX: TOP FOUR PROGRAMS AND PLANS OF THE MPO

Each of these four planning initiatives are designed to address the directives, principals, goals and measures detailed by the Federal Highway Administration through the Fast Act.

## 2020-2045 METROPOLITAN TRANSPORTATION PLAN (MTP)



This is “the” document that strives to incorporate each of the required principals in both the process for development and the implementation thereof. The MTP is at the foundation of your decision making. Do not underestimate the powers of the MTP!

## TRANSPORTATION IMPROVEMENT PROGRAM (TIP)



The TIP is your super-charged grocery list with fiscal accountability built in. A short-term multi-modal project list expected to be

funded within a four year period.

The MPO is required to produce a new TIP every two years. The TIP must be in alignment with the MTP, where projects that are placed on your grocery list must have been well planned out prior to even thinking about heading out to the Piggly Wiggly!

Like all planning efforts the TIP has a built in public comment component.

The TIP is fiscally constrained by each fiscal year. It includes a financial plan that shows which projects can be implemented using existing revenue sources and which projects are to be implemented using proposed revenue sources. Sorry, no room for impromptu last minute shopping!



## PUBLIC PARTICIPATION PLAN (PPP)

*The PPP is your commitment to making decisions based on the voice of the community.*

The Public Participation Plan spells out approaches for public engagement at each stage of the planning process and for each

of the required MPO planning products.

## Unified Planning Work Program (UPWP)



Us bureaucrats could not have possibly come up with a more uninspiring and yawn inducing title for this important document, and no existing official definition captures the essence and relevance of this document. So we will try our own...

***“The UPWP states what the MPO will do, who will do it, with what funds, and when!”***

To be clear, if it’s not in the UPWP it shouldn't be happening! The UPWP is also a tool to evaluate the performance of MPOs and staff provides quarterly progress reports to the NMDOT and FHWA.

# X: THE HEROES and HEROINES OF THE MPO

Each of these three master plans provide credence, respect and support to the mobility option they represent at the same time honoring a balanced multi-modal system and yes have a bit of magic in them.

## SANTA FE METROPOLITAN BICYCLE MASTER PLAN 2019

### BICYCLE MASTER PLAN

SANTA FE METROPOLITAN PLANNING ORGANIZATION



NEW MEXICO DEPARTMENT OF TRANSPORTATION SANTA FE COUNTY PUERTO DE TEJAS CITY OF SANTA FE

*The Bicycle Master plan is your commitment to include bicycling as both a key component of all transportation projects and stand alone facilities throughout the metro area.*

The Bicycle Master Plan is comprehensive in scope and details projects, programs, design recommendations pulled together with as strong vision for a bicycle friendly community.



### PEDESTRIAN MASTER PLAN

## SANTA FE METROPOLITAN PEDESTRIAN MASTER PLAN



PREPARED FOR THE SANTA FE METROPOLITAN PLANNING ORGANIZATION



design office: AGS ARCHITECTS  
AUGUST 13, 2015

*The Pedestrian Master Plan is your recognition that walking is NOT alternative transportation but a fundamental right to all persons no matter their ability, to both move through and access the metro area without a vehicle.*

The Pedestrian Master Plan details the benefits of walking, supports a pedestrian's point of view in light of all transportation improvements and calls for stand alone pedestrian facilities with dedicated funding sources. Walking never felt so good!

### PUBLIC TRANSIT MASTER PLAN

## Santa Fe Metropolitan Public Transit Master Plan



Final Plan  
Adopted June 25, 2015

Santa Fe MPO Transportation Policy Board



KFH

*Santa Fean's invested in bus service more than twenty years ago since then the metro area includes three different bus service providers and the Rail Runner.*

The Public Transit Master Plan identifies opportunities to maximize network capacity, collaborate

amongst service providers and expand the system efficiently in the long-term.

# “DON'T LET THE MUGGLES GET YOU DOWN”

RON WEASLEY

# XI: 2020-2044 MTP Sample Elements

Do you think your local government has a responsibility to decrease greenhouse gas emissions?

¿Cree usted que el gobierno local tiene la responsabilidad de disminuir la emisión de gases de efecto invernadero?

**YES/SÍ**

**NO**

## Key Policy Recommendations

- EDUCATE**  
motorists and bicyclists about safe operating behavior
- CREATE**  
incentives/remove barriers to travel by bike
- ESTABLISH**  
a district-wide Safe Routes to School program
- SUPPORT**  
bicycle education for children and adults
- ENFORCE**  
traffic laws relating to bicycling
- ESTABLISH**  
a bike-sharing program as an extension of public transit services
- PROMOTE**  
and celebrate bicycles and bicycle transportation in the Santa Fe Area
- ENCOURAGE**  
and facilitate the use of bicycles by public agency staff and in the private sector

## SOLUTIONS TO IMPROVING TRANSPORTATION EQUITY



**MYTH:** Roads should assume that drivers will exceed legal limits and, therefore, should be designed to accommodate travel speeds and traffic volumes of at least 25 percent over expectations.

**FACT:** The design of the road itself shapes the behaviors of users—if a road is designed to accommodate higher speeds, drivers will use it as such.

walkable, bikeable, transit-oriented communities are associated with healthier populations that have:

more physical activity

lower body weight

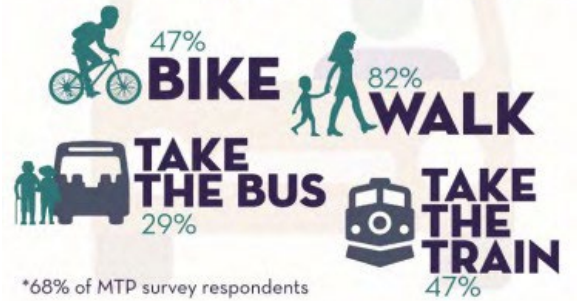
lower rates of traffic injuries

less air pollution

improved mobility for non-drivers



449\* daily car drivers also...



## WHAT IS A COMPLETE STREET?

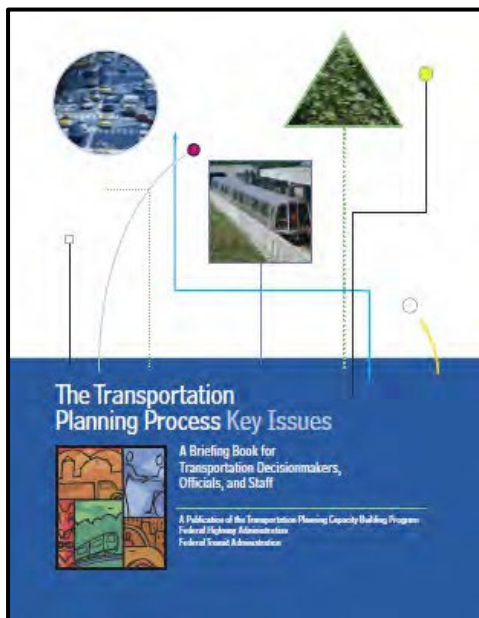


## XI. ADDITIONAL RESOURCES SPECIFIC TO MPOS

Click and Go!



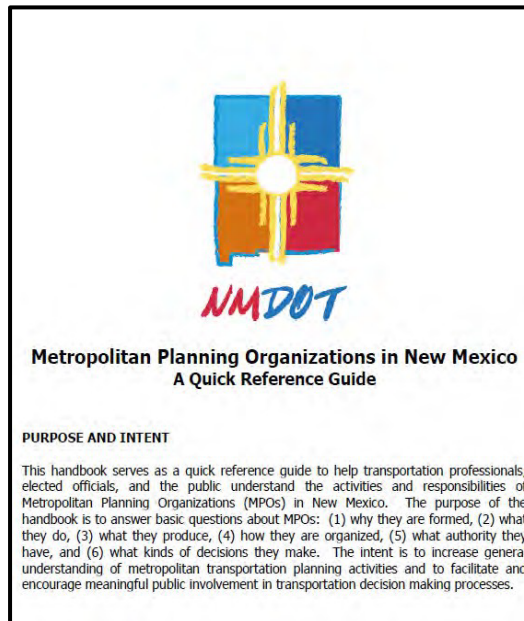
Santa Fe MPO 101 PPT Presentation



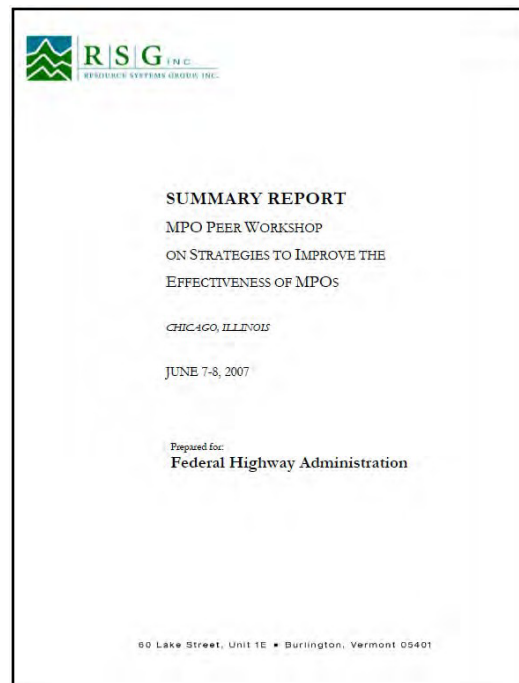
The Transportation Planning Process Key Issues. Federal Highway/Transit Administrations



MPO 101: An Introduction to the Purpose and Function of an MPO. Association of Metropolitan Planning Organizations



NMDOT: Metropolitan Planning Organization in New Mexico: A Quick Reference Guide.



MPO Peer Workshop on Strategies to Improve the Effectiveness of MPOs—RSGinc and Federal Highway Administration

Why your job is important!

Safety!

Each year more than 30,000 men, women and children die due to automobile related collisions. Imagine New Mexico University Stadium attendees being wiped out annually, not to mention the number of citizens critically wounded in collisions.

Transportation infrastructure investments should carefully weigh all safety implications. Opportunities to invest in safety measures on existing surfaces is clearly important.