



Agenda

Notice of the Early
Neighborhood Notification
(ENN)
January 29, 2026 at 5:00 PM
Meeting Virtually

Procedures for Early Neighborhood Notification (ENN) Meeting

1. ENN Name
 - a. Environmental Services Division Operations and Maintenance Buildings
2. Project Address
 - a. 1142 Siler Road, Santa Fe, NM 97507
3. Description
 - a. Design and Construction of new Operations and Maintenance Buildings to provide safe, functional workspace for ESD staff, including room for safety training, office and meeting spaces, and a modern CNG-compliant maintenance facility and wash bay.
4. Applicant
 - a. City of Santa Fe Public Works Department, Facilities Division, Public Utilities Department, Environmental Services Division, and Huitt-Zollars, Inc.
5. Staff
 - a. Caryn Grosse, PMP
Project Manager III
Facilities Division
clgrosse@santafenm.gov
505-955-5938
6. Meeting Location
 - a. Thursday, January 29, 2026, 5:00pm
Santa Fe Trails/Transit Administration Building, 2931 Rufina Street

Persons with disabilities in need of accommodations, contact the City Clerk's office at 955-6521, five (5) working days prior to meeting date.



City of Santa Fe

January 13, 2026

Dear Neighbor:

The City of Santa Fe is designing new Operations and Maintenance Buildings for the Environmental Services Division (ESD) at 1142 Siler Road. These buildings will provide safe and functional workspace for ESD staff, with room for safety training, office and meeting spaces, and a modern CNG-compliant maintenance facility and wash bay, which will allow more vehicle maintenance to be performed in-house, reducing the cost of repairs and maintenance, and improving preventative maintenance. This project is being designed by Huitt-Zollars, Inc.

The City of Santa Fe requires an Early Neighborhood Notification (ENN) meeting to be conducted for city capital improvement projects. It is intended to provide an opportunity for the community to review the City's planned capital infrastructure project. The meeting is scheduled for:

Time: 5:00 pm

When: Thursday, January 29, 2026

Where: Santa Fe Trails/Transit Administrative Offices, 2931 Rufina Street

Members of the public are invited to attend this meeting in person. Public Comments can be delivered via the following:

- During the meeting there will be a presentation that addresses the current design status. This will be followed by a period of public comment. Attendees may voice their comments during this time.
- A comment form will also be provided at the meeting.
- Via email to clgrosse@santafenm.gov

Enclosed please find a project meeting overview with vicinity map of the project site. The presentation materials for the meeting will be uploaded at least (5) days prior to the meeting on the City of Santa Fe's portal: <https://santafenm.portal.civicclerk.com>.

Please contact me with any questions or comments.

Sincerely,

Caryn Grosse, PMP
Project Manager III
City of Santa Fe Public Works
Facilities Division

Enclosure



Environmental Services Operations & Maintenance Buildings

What:

New buildings for Operations and Maintenance, with features to include:

- Training Room
- Offices and Conference Room
- CNG-Compliant Maintenance Building with
- Wash Bay

When:

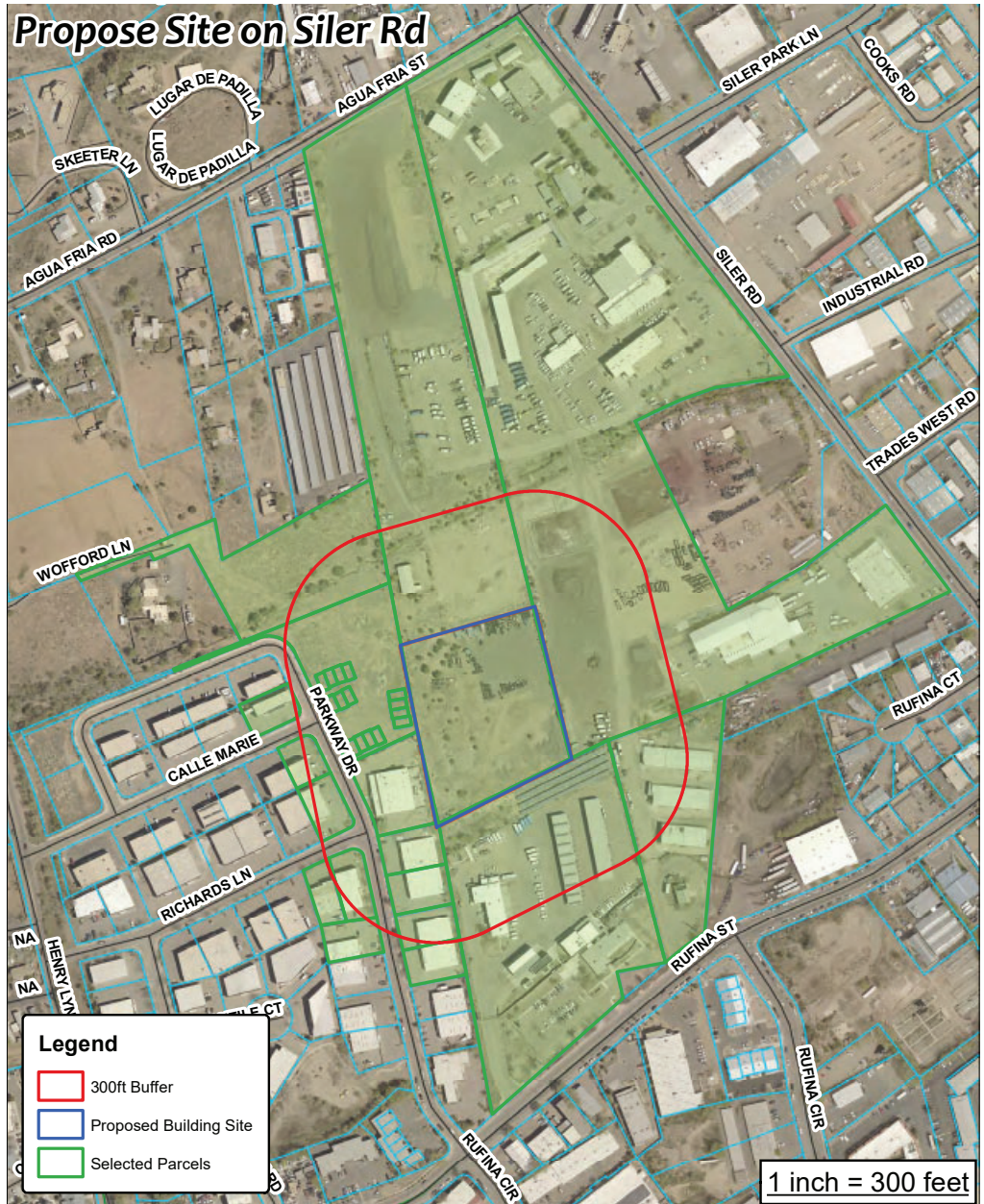
Thursday, January 29, 2026,
5:00 PM

Where:

Santa Fe Trails/Transit Administration Building,
2931 Rufina Street

Who:

Members of the public are invited to attend them meeting to review the plans for this project



For more information, please contact:

Caryn Grosse, PMP, Project Manager III
City of Santa Fe Public Works, Facilities Division
cggrosse@santafenm.gov, 505-955-5938

ENVIRONMENTAL SERVICES DIVISION

NEW OPERATIONS AND MAINTENANCE BUILDING

January 29, 2026



Public Information / Review Meeting



AGENDA

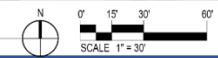
- INTRODUCTIONS / SIGN IN
- DESIGN OVERVIEW
 - SITE PLAN
 - FLOOR PLANS
 - ELEVATIONS
- QUESTIONS / COMMENTS
- ADJOURN

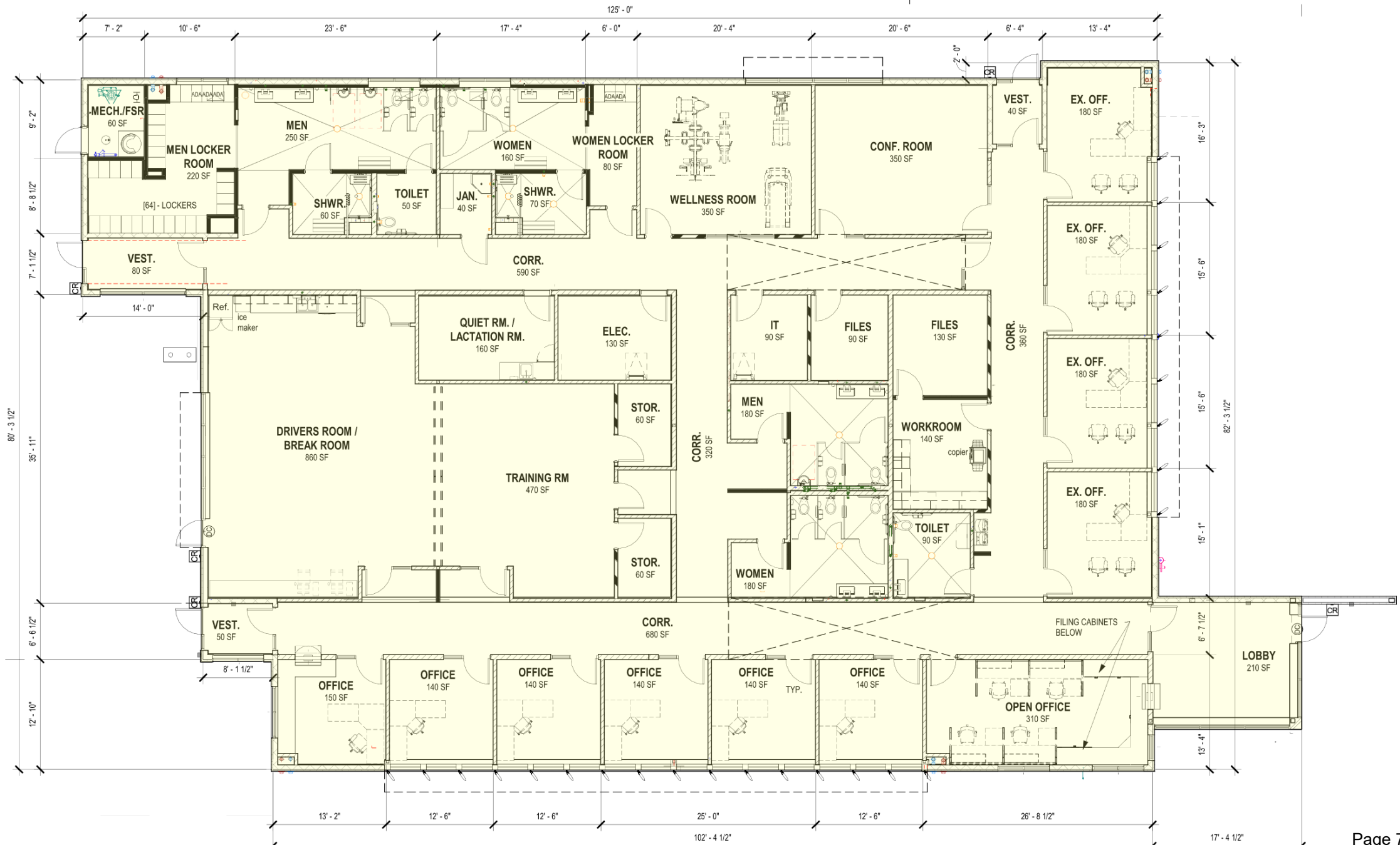


A1

SITE PLAN

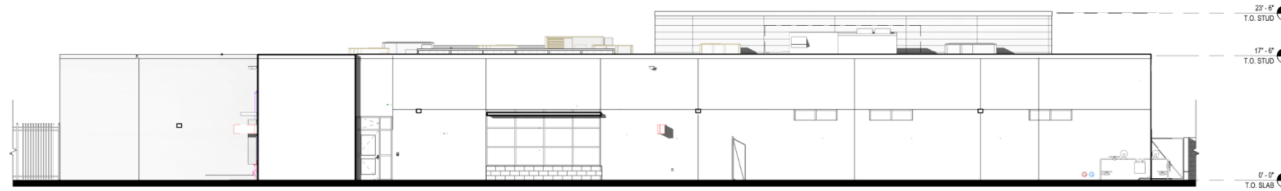
1" = 30'-0"







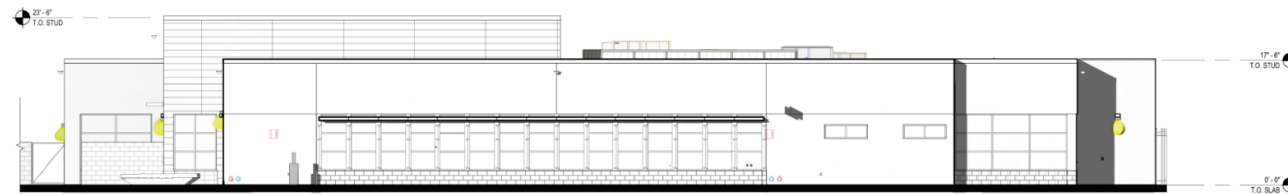
D1 OPERATIONS BUILDING - EAST ELEVATION
1/8"=1'-0"



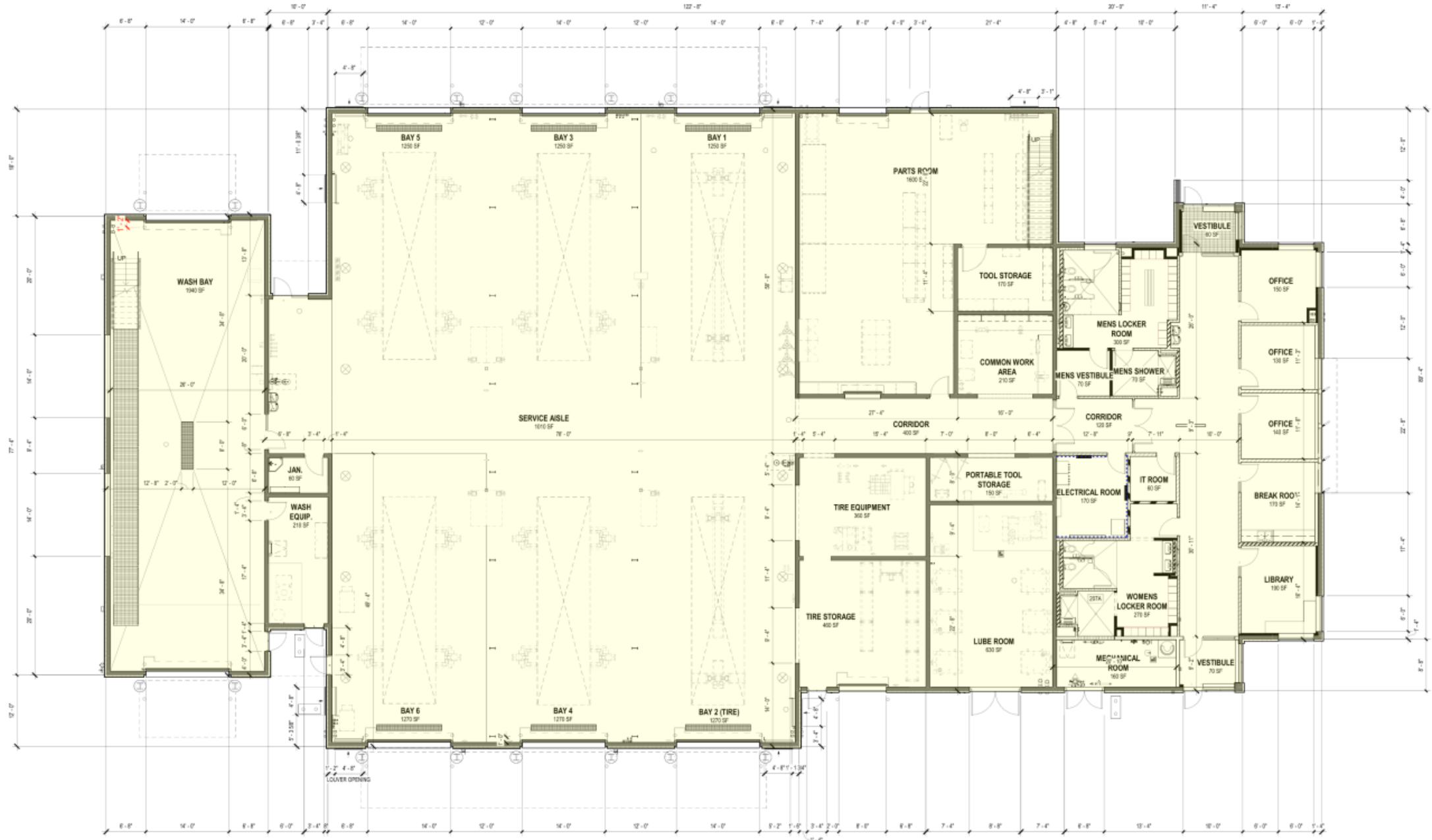
C1 OPERATIONS BUILDING - NORTH ELEVATION
1/8"=1'-0"



B1 OPERATIONS BUILDING - WEST ELEVATION
1/8"=1'-0"



A1 OPERATIONS BUILDING - SOUTH ELEVATION
1/8"=1'-0"

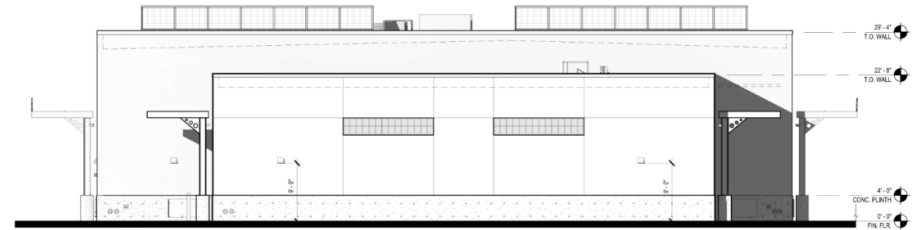


A1 MAINTENANCE FACILITY FLOOR PLAN
1/8" = 1'-0"

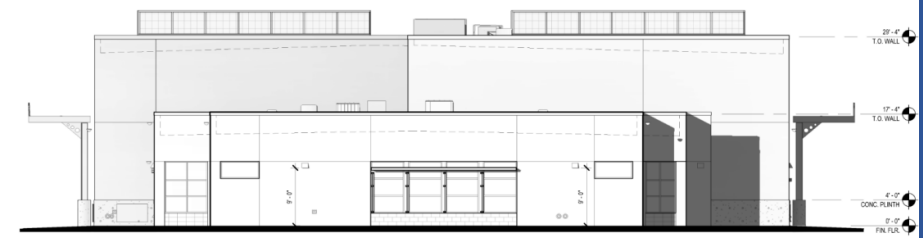




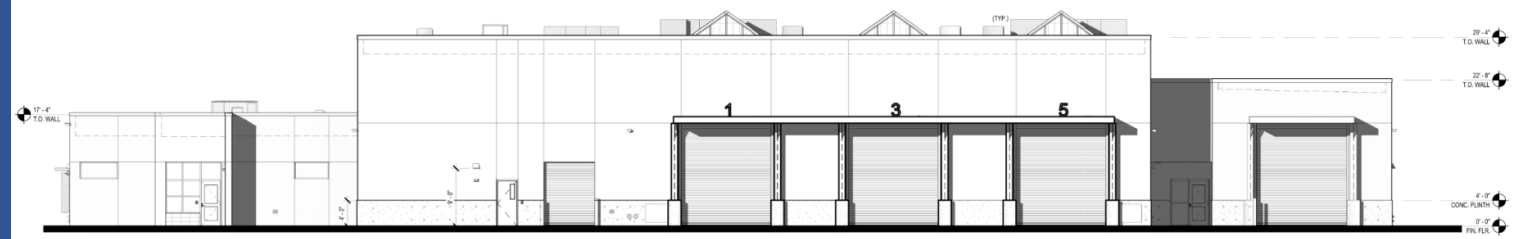
D1 MAINTENANCE FACILITY NEW SOUTH ELEVATION
1/8" = 1'-0"



C1 MAINTENANCE FACILITY WEST ELEVATION
1/8" = 1'-0"



B1 MAINTENANCE FACILITY EAST ELEVATION
1/8" = 1'-0"



A1 MAINTENANCE FACILITY NORTH ELEVATION
1/8" = 1'-0"

QUESTIONS / COMMENTS