



## Agenda

Notice of the Early  
Neighborhood Notification  
(ENN)  
November 6, 2025 at 6:30 PM  
Meeting Virtually

---

### Procedures for Early Neighborhood Notification (ENN) Meeting

1. ENN Name
  - a. Arroyo Torreon Phase II Concept Design
2. Project Address
  - a. Arroyo Torreon
3. Description
  - a. The project team will present the final design for channel stabilization improvements to mitigate erosion occurring along Arroyo Torreon.
4. Applicant
  - a. Bohannon Huston 505-264-0111, outreach@bhinc.com
5. Staff
  - a. Zoe Isaacson, River and Watershed Manager, zrisaacson@santafenm.gov
6. Meeting Location
  - a. La Farge Library | 1730 Llano St, Santa Fe, NM 87505

Persons with disabilities in need of accommodations, contact the City Clerk's office at 955-6521, five (5) working days prior to meeting date.



CITY OF SANTA FE

**Arroyo Torreon Phase II Concept Design  
Early Neighborhood Notification  
Public Meeting**



CITY OF SANTA FE

**Thursday, November 6th, 6:30-7:30pm**

**La Farge Library | 1730 Llano St, Santa Fe, NM 87505**

**The City of Santa Fe invites you to an ENN public meeting to learn and ask questions about the Arroyo Torreon channel stabilization project.**

The project team will present the final design for channel stabilization improvements to mitigate erosion occurring along Arroyo Torreon.

*If you have questions or comments or need special accommodations, including Spanish translation, please contact Liz Treat at least five days prior to the meeting date. Si necesita traducción al español durante la reunión, por favor contáctenos al menos cinco días antes de la reunión.*

**Email:** [outreach@bhinc.com](mailto:outreach@bhinc.com) **Phone:** 505-264-0111



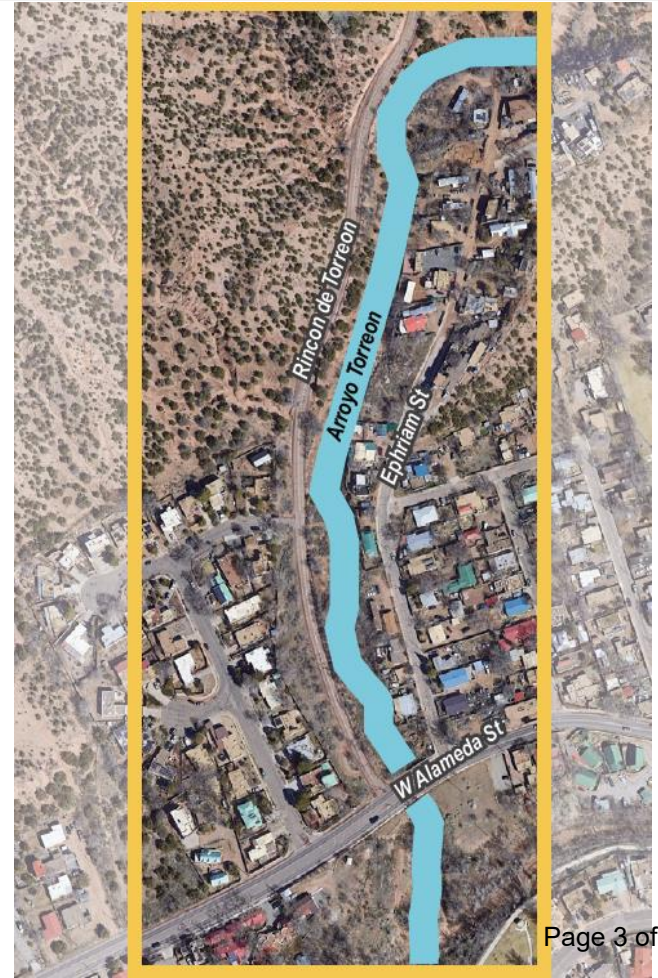
---

# Arroyo Torreon ENN Meeting

Thursday, November 6, 6:30-7:30pm,  
La Farge Library

**Presenter**

Vince Steiner, P.E., CFM  
Bohannon Huston





# Introduction



---

## Introductions

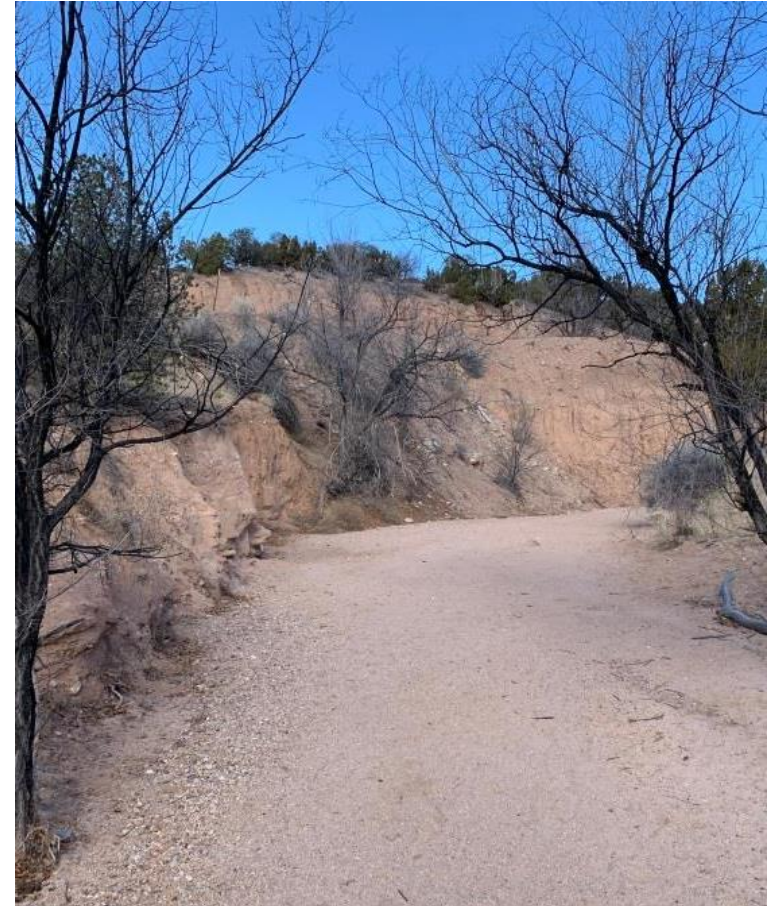
City of Santa Fe

Zoë Isaacson, River and Watershed Manager

Bohannon Huston

Vince Steiner, P.E., CFM, Vice President

Liz Treat, Planner





---

## Agenda

- Project Objectives Recap
- Current Design
- Next Steps



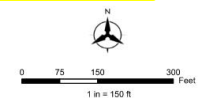
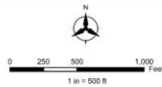
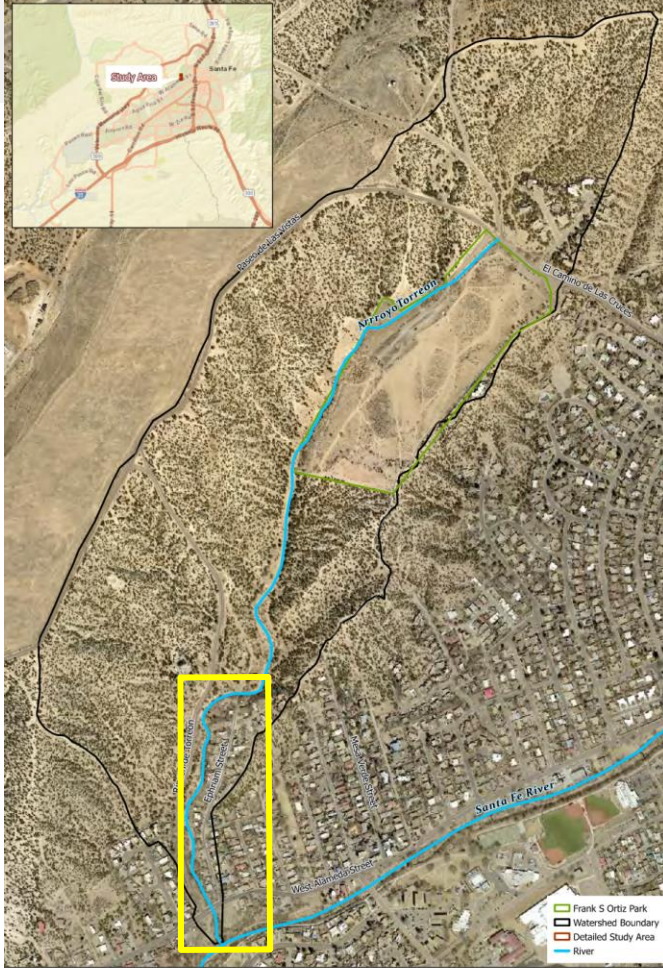


# Project Objectives



# Study Area

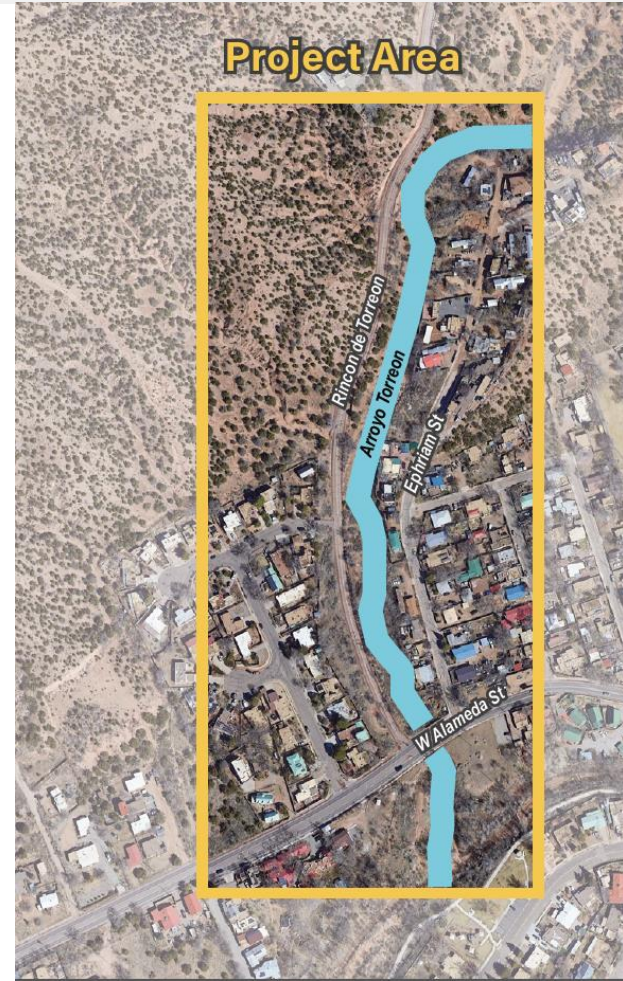
Southwest/downstream reach of Arroyo Torreon





## Project Objectives

- Channel stabilization measures
  - Flood mitigation
  - Resiliency
  - Cost effective





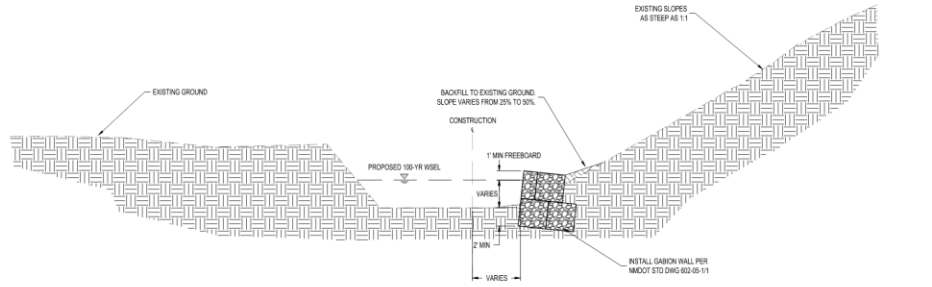


---

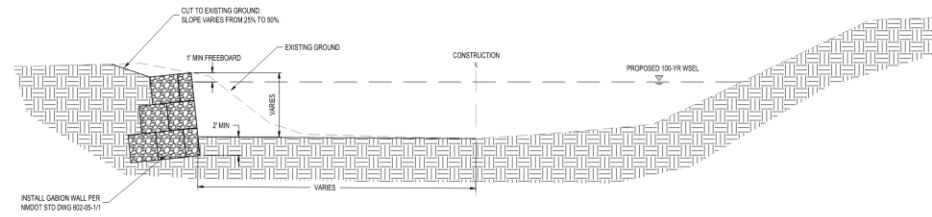
## Design Updates per May 2025 Meeting

- Ensured gabion keys are sufficient to avoid flanking
- Added east bank slope stabilization at Sta 11+00





TYPE B GABION WALL TYPICAL SECTION - FILL



TYPE B GABION WALL TYPICAL SECTION - CUT

TYPICAL SECTIONS

- GENERAL NOTES:**
- GABIONS TO BE CONSTRUCTED PER NMOOT STANDARD DRAWING 602-05-11.
  - SECTIONS MAY VARY BETWEEN TYPE "X" AND TYPE "B". BOTH SECTIONS SHOWN ON THIS SHEET ARE TYPE "B".

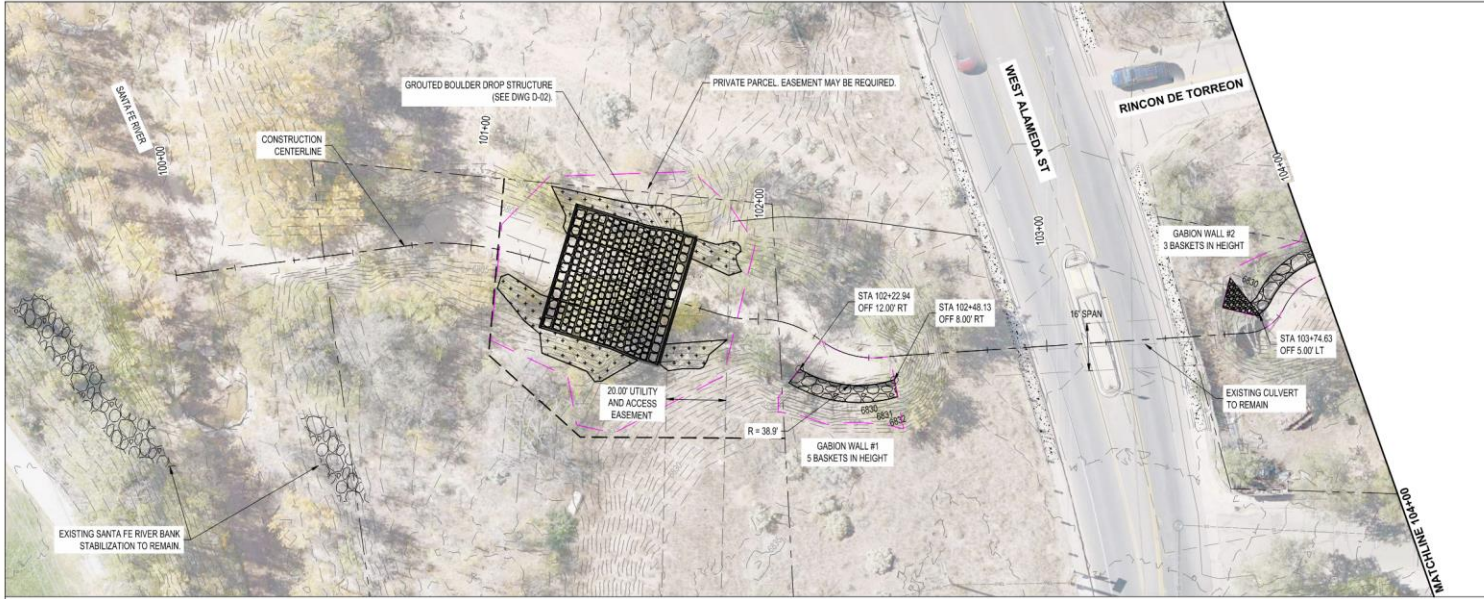
DESIGN		DESIGNED BY		CHECKED BY		DRAWN BY	
NO.	DATE	ALG	BT	NEC			
REVISIONS		AS-BUILT INFORMATION					
BY	DATE	CONTRACTOR	DATE	DATE	DATE	DATE	DATE
		ENGINEER	INSPECTOR	FIELD SUPERVISOR	FIELD SUPERVISOR	CONTRACTOR	CONTRACTOR
ENGINEER'S SEAL		BENCH MARKS					
90% FOR REVIEW ONLY							
October 8, 2025							



CITY OF SANTA FE  
ARROYO TORREON - CHANNEL STABILIZATION DESIGN  
TYPICAL SECTIONS

BY PROJECT NO.	20250283	DWG NO.	D-04	SHEET	17	OF	22
----------------	----------	---------	------	-------	----	----	----

The City of Santa Fe, New Mexico, is an Equal Opportunity Employer. Minorities and women are encouraged to apply.



**LEGEND**

- ALIGNMENT CENTERLINE
- DRAINAGE CULVERT
- FENCE BARBWIRE
- ROADWAY EDGE ASPHALT
- GATE
- EXISTING CONTOUR MAJOR
- EXISTING CONTOUR MINOR
- PROPOSED CONTOUR MAJOR
- PROPOSED CONTOUR MINOR
- EXISTING STORM DRAIN LINE
- GRADING LIMITS
- PEDESTRIAN RAILING
- EXISTING PROPERTY LINE
- STORM DRAIN EASEMENT
- - - CONSTRUCTION EASEMENT
- TREE TO BE REMOVED
- ⊕ MONUMENT ALUMINUM CAP
- ⊙ SINGLE POST SIGN
- ⊙ GROUND SHOT
- ⊙ SANITARY SEWER MANHOLE

- CONCRETE
- COMPACTED EARTH
- GABIONS
- BURIED GABIONS
- CLASS C SEEDING WITH ROCK MULCH
- GROUTED BOULDERS
- WIRE-TIED RIPRAP

**BENCH MARKS**

ENGINEER'S SEAL

**90% FOR REVIEW ONLY**

October 15, 2025

**INFORMATION**

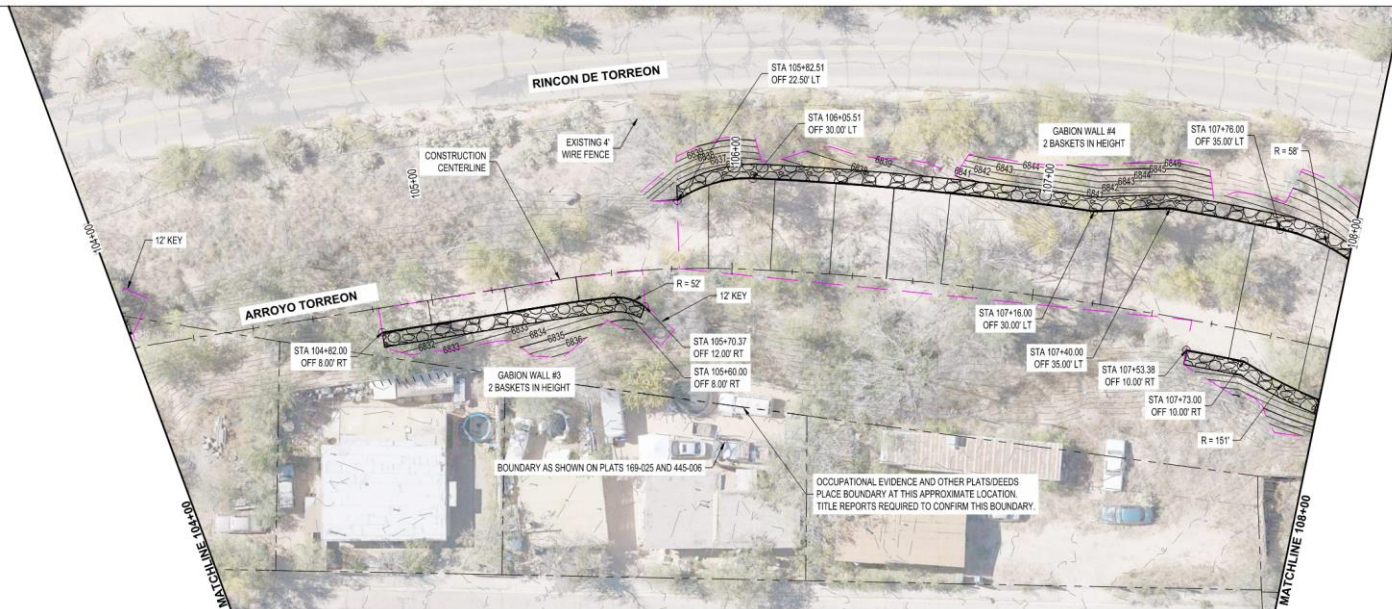
DATE	DATE	DATE	DATE	DATE



# Grouted Boulder Grade Control Structure

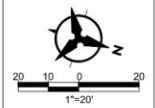
- Examples





LEGEND

- ALIGNMENT CENTERLINE
- DRAINAGE CULVERT
- FENCE BARBWIRE
- ROADWAY EDGE ASPHALT
- GATE
- EXISTING CONTOUR MAJOR
- EXISTING CONTOUR MINOR
- PROPOSED CONTOUR MAJOR
- PROPOSED CONTOUR MINOR
- EXISTING STORM DRAIN LINE
- GRADING LIMITS
- PEDESTRIAN RAILING
- EXISTING PROPERTY LINE
- STORM DRAIN EASEMENT
- CONSTRUCTION EASEMENT
- TREE TO BE REMOVED
- ⊕ MONUMENT ALUMINUM CAP
- ⊕ SINGLE POST SIGN
- ⊕ GROUND SHOT
- ⊕ SANITARY SEWER MANHOLE
- CONCRETE
- COMPACTED EARTH
- GABIONS
- BURIED GABIONS
- CLASS C SEEDING WITH ROCK MULCH
- GROUTED BOULDERS
- WIRE-TIED RIPRAP



BENCH MARKS

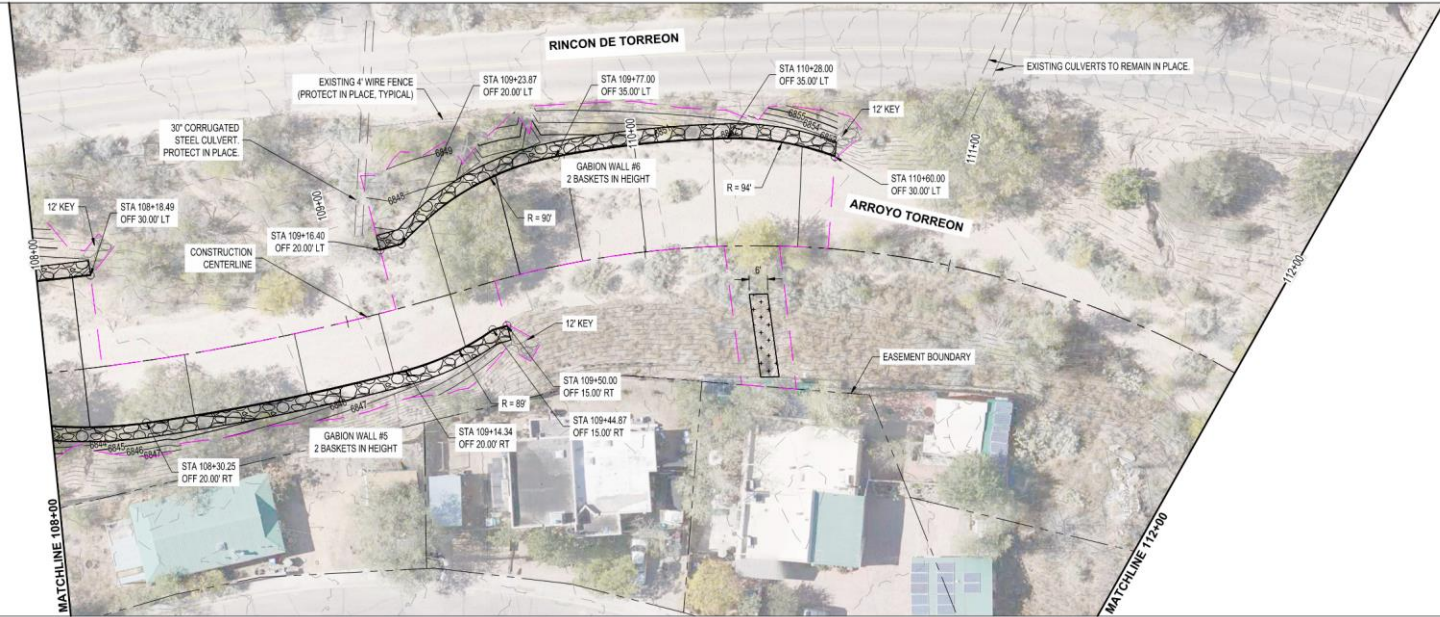
ENGINEER'S SEAL

90% FOR REVIEW ONLY

October 15, 2025

INFORMATION

DATE	DATE	DATE	DATE	DATE



**LEGEND**

- ALIGNMENT CENTERLINE
- DRAINAGE CULVERT
- FENCE BARBWIRE
- ROADWAY EDGE ASPHALT
- GATE
- EXISTING CONTOUR MAJOR
- EXISTING CONTOUR MINOR
- PROPOSED CONTOUR MAJOR
- PROPOSED CONTOUR MINOR
- EXISTING STORM DRAIN LINE
- GRADING LIMITS
- PEDESTRIAN RAILING
- EXISTING PROPERTY LINE
- STORM DRAIN EASEMENT
- CONSTRUCTION EASEMENT
- TREE TO BE REMOVED
- ⊕ MONUMENT ALUMINUM CAP
- ⊕ SINGLE POST SIGN
- ⊕ GROUND SHOT
- ⊕ SANITARY SEWER MANHOLE

**CONSTRUCTION MATERIALS**

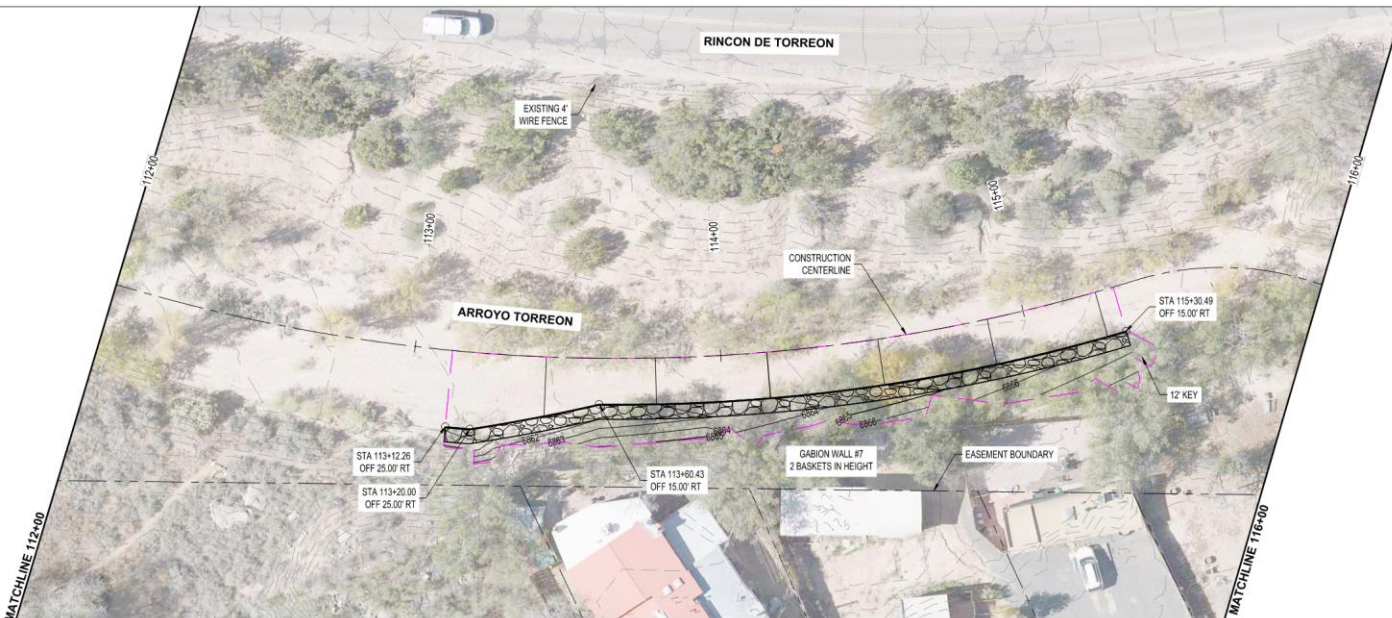
- ▬ CONCRETE
- ▬ COMPACTED EARTH
- ▬ GABIONS
- ▬ BURIED GABIONS
- ▬ CLASS C SEEDING WITH ROCK MULCH
- ▬ GROUTED BOULDERS
- ▬ WIRE-TIED RIPRAP

**ENGINEER'S SEAL**




























**90% FOR REVIEW ONLY**

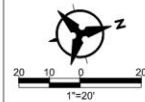
October 15, 2025

INFORMATION	DATE	DATE	DATE	DATE	DATE



**LEGEND**

-  ALIGNMENT CENTERLINE
-  DRAINAGE CULVERT
-  FENCE BARBWARE
-  ROADWAY EDGE ASPHALT
-  GATE
-  EXISTING CONTOUR MAJOR
-  EXISTING CONTOUR MINOR
-  PROPOSED CONTOUR MAJOR
-  PROPOSED CONTOUR MINOR
-  EXISTING STORM DRAIN LINE
-  GRADING LIMITS
-  PEDESTRIAN RAILING
-  EXISTING PROPERTY LINE
-  STORM DRAIN EASEMENT
-  CONSTRUCTION EASEMENT
-  TREE TO BE REMOVED
-  MONUMENT ALUMINUM CAP
-  SINGLE POST SIGN
-  GROUND SHOT
-  SANITARY SEWER MANHOLE
-  CONCRETE
-  COMPACTED EARTH
-  GABIONS
-  BURIED GABIONS
-  CLASS C SEEDING WITH ROCK MULCH
-  GROUTED BOULDERS
-  WIRE-TIED RIPRAP



BENCH MARKS

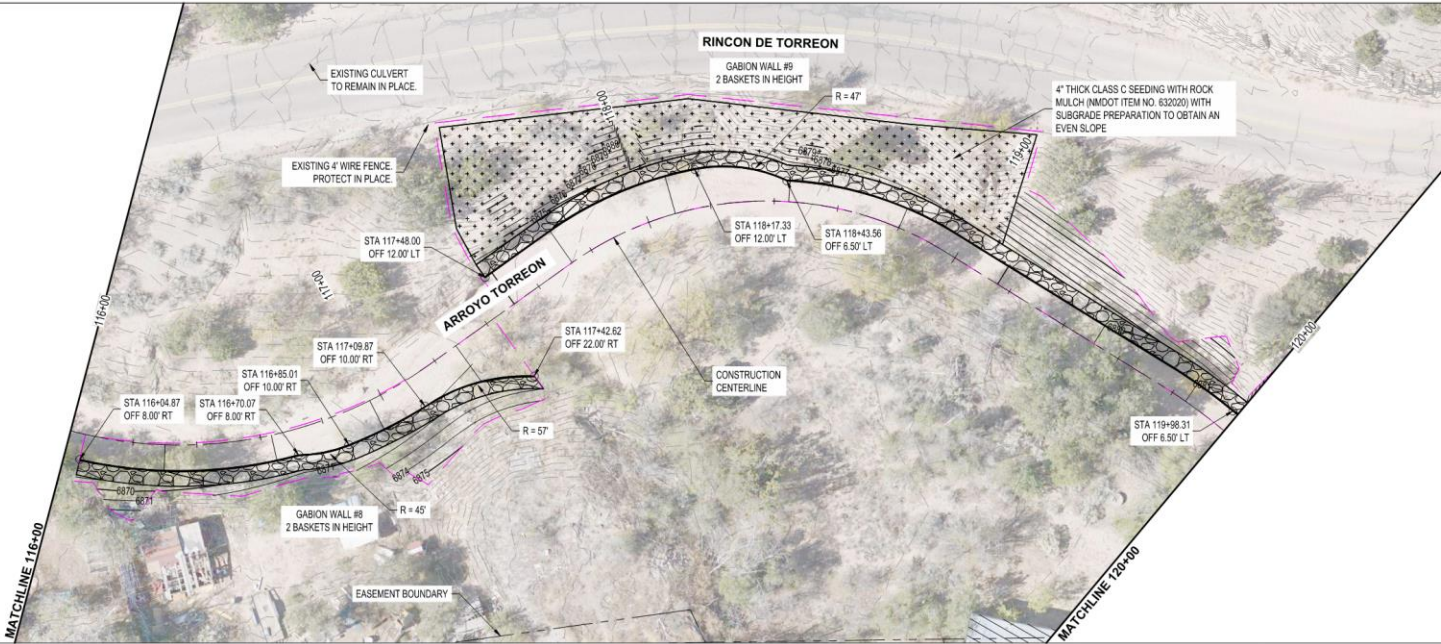
ENGINEER'S SEAL

**90% FOR REVIEW ONLY**

October 15, 2025

INFORMATION

DATE	DATE	DATE	DATE	DATE



**LEGEND**

- ALIGNMENT CENTERLINE
- DRAINAGE CULVERT
- FENCE BARBWIRE
- ROADWAY EDGE ASPHALT
- GATE
- EXISTING CONTOUR MAJOR
- EXISTING CONTOUR MINOR
- PROPOSED CONTOUR MAJOR
- PROPOSED CONTOUR MINOR
- EXISTING STORM DRAIN LINE
- GRADING LIMITS
- PEDESTRIAN RAILING
- EXISTING PROPERTY LINE
- STORM DRAIN EASEMENT
- CONSTRUCTION EASEMENT
- TREE TO BE REMOVED
- MONUMENT ALUMINUM CAP
- SINGLE POST SIGN
- GROUND SHOT
- SANITARY SEWER MANHOLE
- CONCRETE
- COMPACTED EARTH
- GABIONS
- BURIED GABIONS
- CLASS C SEEDING WITH ROCK MULCH
- GROUTED BOULDERS
- WIRE-TIED RIPRAP

**ENGINEER'S SEAL**

**90% FOR REVIEW ONLY**

October 15, 2025

**INFORMATION**

DATE	DATE	DATE	DATE	DATE	DATE

**BENCH MARKS**

**1"=20'**



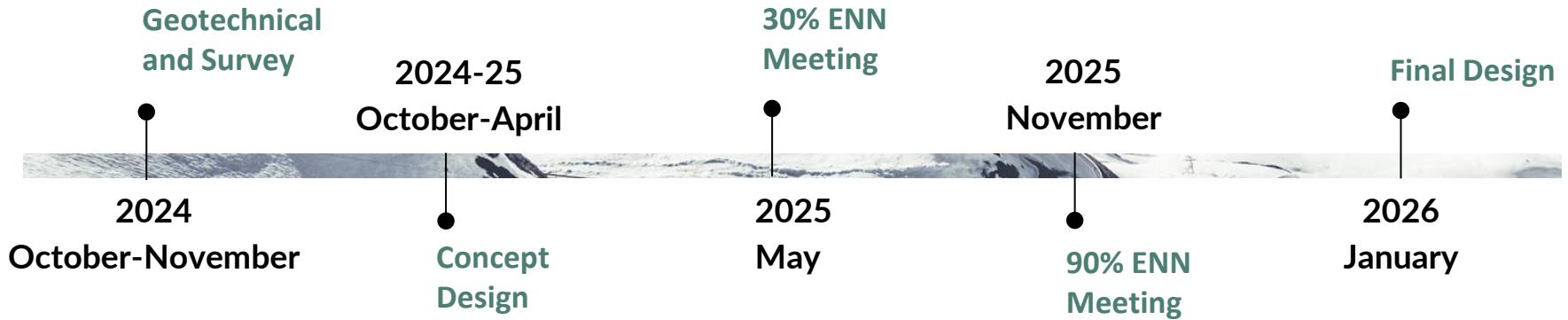


# Next Steps





# Schedule





# Thank you.

**Phone**  
505-264-0111

---

**Email**  
[outreach@bhinc.com](mailto:outreach@bhinc.com)