



City of Santa Fe

# AGENDA

BICYCLE AND PEDESTRIAN  
ADVISORY COMMITTEE  
SEPTEMBER 12, 2024  
5:30 PM  
CITY HALL  
COUNCIL CHAMBERS  
200 LINCOLN AVENUE

---

## PROCEDURES FOR BICYCLE AND PEDESTRIANS ADVISORY COMMITTEE MEETING

**Written Public Comment:** Members of the public may submit written comments on legislation by clicking on the comment bubble to the right of the meeting on the public portal at <https://santafe.primegov.com/public/portal> three hours prior to the start of the meeting.

The agenda and packet for the meeting will be posted at <https://santafe.primegov.com/public/portal>.

1. **CALL TO ORDER**
2. **ROLL CALL**
3. **APPROVAL OF AGENDA**
4. **APPROVAL OF MINUTES**

- a. Request for Approval of July 11, 2024 BPAC Minutes.
- b. Request for Approval of August 8, 2024 BPAC Minutes.

5. **COMMUNICATIONS FROM THE PUBLIC (maximum 2 minutes)**

6. **COMMUNICATIONS FROM OTHER AGENCIES (maximum 5 minutes)**

- a. Safe Routes to School Program, Ryan Harris, Coordinator
- b. Santa Fe Metropolitan Planning Organization (SFMPO), Erick Aune, AICP Director/ Leah Yngve, MSP, Sr. Transportation Planner
- c. Bike Santa Fe, Becky Smith/ Dan Young, Board Members

7. **DISCUSSION AND POSSIBLE ACTION ITEMS**

- a. City of Santa Fe's Fall Bike Ride Series (Jennifer Bransford, Recreation Coordinator, Recreation Department)
- b. Rabbit Road: Present Condition, Impact of NE/SE Connector Completion on Safety (Khalil Spencer, former BPAC Vice Chair)
- c. Presentation of Award Certificate(s) (Chair Michael Garcia)
- d. St. Michael's Drive Bicycle and Pedestrian Improvements Project: Llano St – St. Michael's Drive Intersection Improvements Progress Plans (Mike Dalmolin, PE, City Traffic Operations Engineer/ Rich Rotto, PE, AECOM)
- e. Paseo del Sol Extension 90% Design Review (Dan Painter, Technical Review Subcommittee Chair)  
Link to 90% plan set: [https://www.dropbox.com/scl/fi/7gsmkfi724qgtdy6zkju1/Paseo-del-Sol-Extension-Project-90-Plans\\_08.28.24.pdf?rlkey=peymzl7pnlirdkks8jtpacvxj&st=pxin06zp&dl=0](https://www.dropbox.com/scl/fi/7gsmkfi724qgtdy6zkju1/Paseo-del-Sol-Extension-Project-90-Plans_08.28.24.pdf?rlkey=peymzl7pnlirdkks8jtpacvxj&st=pxin06zp&dl=0)  
Link to Drainage  
Report: [https://www.dropbox.com/scl/fo/adluu2wbtn0n5y1i82iov/AFHA1y8cf7DGRP\\_dflozMxM?](https://www.dropbox.com/scl/fo/adluu2wbtn0n5y1i82iov/AFHA1y8cf7DGRP_dflozMxM?)





# MINUTES

BICYCLE AND PEDESTRIAN  
ADVISORY COMMITTEE  
AUGUST 08, 2024  
5:30 PM  
CITY HALL  
COUNCIL CHAMBERS, 201  
LINCOLN AVENUE  
SANTA FE

---

## 1. CALL TO ORDER

The meeting was called to order by Chair Michael Garcia at 5:37 pm.

## 2. ROLL CALL

### Members Present:

Chair Michael Garcia  
Member Erik Aaboe  
Member Angela Bordegaray  
Member Yolanda Eisenstein  
Member Steve Pilcher  
Member Ben Pingilley

### Members Excused:

Member Judith Gabriele  
Member Tony Gerlicz  
Member Dan Painter

### Others Attending:

Romella Glorioso-Moss, Staff Liaison  
Kathlyne Gish, Chair, Mayor's Committee on Disability

## 3. APPROVAL OF AGENDA

**MOTION:** Member Aaboe moved, seconded by Member Pilcher, to approve the Agenda as amended.  
Staff requested to remove Items 4.a and 8.c.

**VOTE:** The motion was approved on the following Roll Call vote:

**For:** Member Aaboe, Member Bordegaray, Member Eisenstein, Member Pilcher, Member Pingilley, Chair Garcia



## MINUTES

**Against:** None

**Abstain:** None

### 4. APPROVAL OF MINUTES

- a. Request for Approval of July 11, 2024 BPAC minutes.

REMOVED FROM THE AGENDA

### 5. COMMUNICATIONS FROM THE PUBLIC (2 minutes maximum)

### 6. COMMUNICATIONS FROM OTHER AGENCIES (5 minutes maximum)

- a. Santa Fe Metropolitan Planning Organization (SFMPO), Erick Aune, AICP, SFMPO Officer and Leah Yngve, MPH, Sr. Transportation Planner
- b. Bike Santa Fe, Becky Smith or Dan Young, Board Members
- c. Safe Routes to School Program, Ryan Harris, Coordinator
- d. Public Safety Committee, Steve Pilcher, BPAC Vice Chair

### 7. DISCUSSION AND POSSIBLE ACTION ITEMS

- a. Request to Recommend to the Planning Commission and Governing Body to Adopt the "Traffic Impact Analysis Guidelines" by Reference in Chapter 13 of the Land Development Code (Erick Aune, SFMPO Director).

**MOTION:** Member Bordegaray moved, seconded by Member Aaboe, to recommend approval to the Planning Commission and Governing Body to adopt the "Traffic Impact Analysis Guidelines"



## MINUTES

by Reference or Appendix to Chapter 14 – Land Development.

**VOTE:** The motion was approved on the following Roll Call vote:

**For:** Member Aaboe, Member Bordegaray, Member Eisenstein, Member Pilcher, Member Pingilley, Chair Garcia

**Against:** None

**Abstain:** None

- b. CONSIDERATION OF A RESOLUTION 2024-\_\_\_\_\_. (Mayor Alan Webber, Councilor Carol Romero-Wirth, and Councilor Michael Garcia) A Resolution Proposing a Ballot Question to be Submitted to the City of Santa Fe Voters During the November 5, 2024, General Election; Relating to the City Issuance of a General Obligation Bond in the Maximum Principal Amount of \$25,000,000 to be Repaid from Property Taxes to Construct, Design, Equip, and Improve Roads and Improve Roads and Streets Within the City. (Discussion Requested by Angela Bordegaray and Tony Gerlicz, BPAC Members)

**MOTION:** Member Bordegaray moved, seconded by Member Eisenstein, to recommend adoption by City Council.

**VOTE:** The motion was approved on the following Roll Call vote:

**For:** Member Aaboe, Member Bordegaray, Member Eisenstein, Member Pilcher, Member Pingilley, Chair Garcia

**Against:** None

**Abstain:** None



# MINUTES

BICYCLE AND PEDESTRIAN  
ADVISORY COMMITTEE  
AUGUST 08, 2024  
5:30 PM  
CITY HALL  
COUNCIL CHAMBERS, 201  
LINCOLN AVENUE  
SANTA FE

---

8. **SUBCOMMITTEE COMMUNICATIONS**

- a. Policy, Planning and Law (Yolanda Eisenstein, Chair or Steve Pilcher)
- b. Promotion, Education and Communications (Judith Gabriele, Chair)
- c. Technical Review (Dan Painter, Chair)

REMOVED FROM THE AGENDA

9. **MATTERS FROM THE STAFF**

10. **MATTERS FROM THE COMMITTEE**

11. **MATTERS FROM THE CHAIR**

12. **NEXT MEETING: September 12, 2024**

13. **ADJOURN: 7:15 PM**

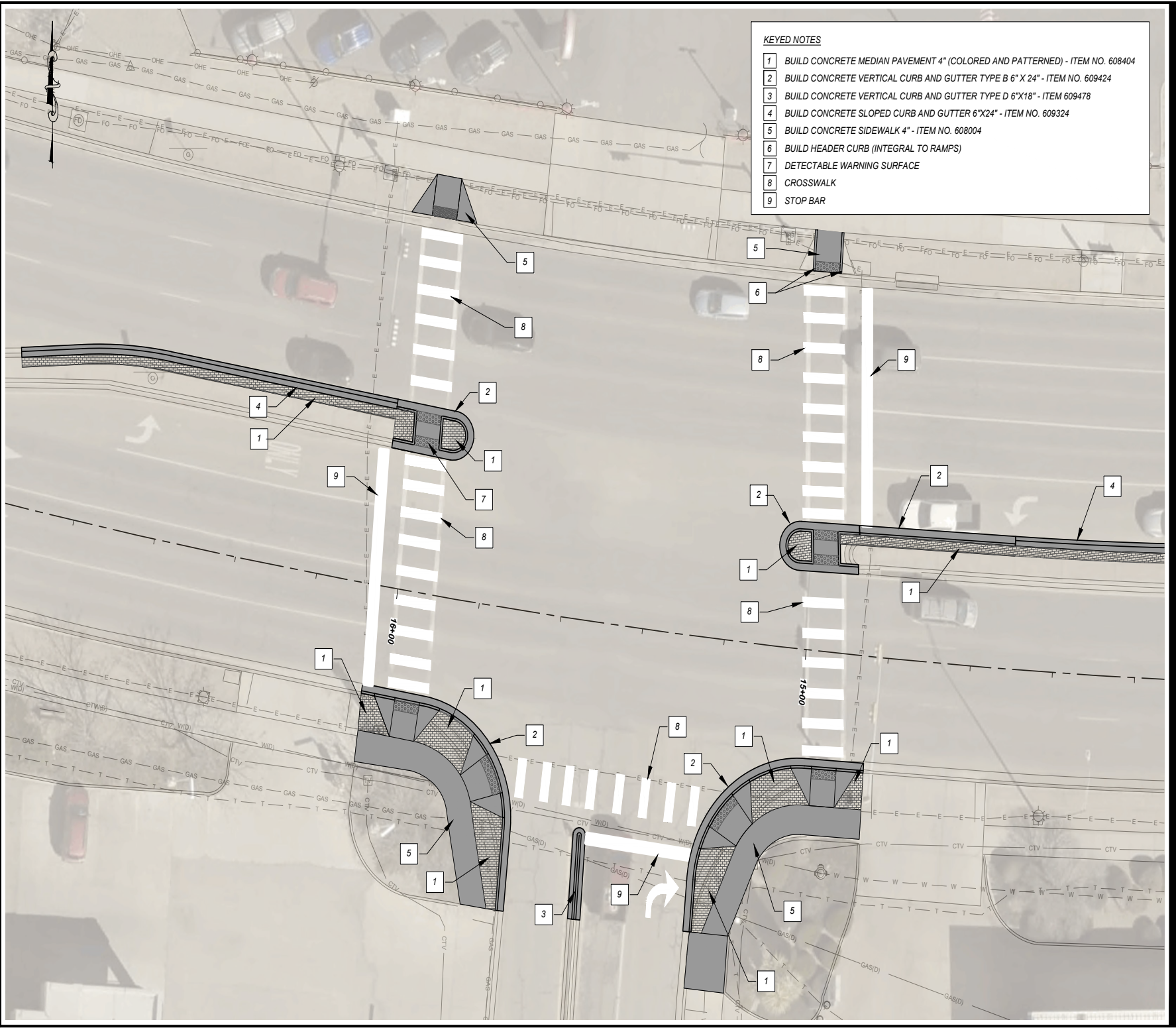
*Romella Glorioso-Moss*

---

Liaison

---

Chair



- KEYED NOTES**
- 1 BUILD CONCRETE MEDIAN PAVEMENT 4" (COLORED AND PATTERNED) - ITEM NO. 608404
  - 2 BUILD CONCRETE VERTICAL CURB AND GUTTER TYPE B 6" X 24" - ITEM NO. 609424
  - 3 BUILD CONCRETE VERTICAL CURB AND GUTTER TYPE D 6"X18" - ITEM 609478
  - 4 BUILD CONCRETE SLOPED CURB AND GUTTER 6"X24" - ITEM NO. 609324
  - 5 BUILD CONCRETE SIDEWALK 4" - ITEM NO. 608004
  - 6 BUILD HEADER CURB (INTEGRAL TO RAMPS)
  - 7 DETECTABLE WARNING SURFACE
  - 8 CROSSWALK
  - 9 STOP BAR



PROJECT  
#####

CLIENT  
CITY of SANTA FE  
200 Lincoln Avenue  
Santa Fe, New Mexico 87504  
T 505.855.6949  
www.santafemn.gov



ENGINEERING CONSULTANT  
AECOM  
150 Washington Avenue, Suite 201  
Santa Fe, New Mexico 87501  
T 505.855.7500  
www.aecom.com

SUBCONSULTANTS  
#####  
#####  
#  
#  
#  
#  
#  
#  
#  
#  
#  
#

REGISTRATION

### NOT FOR CONSTRUCTION

ISSUE/REVISION

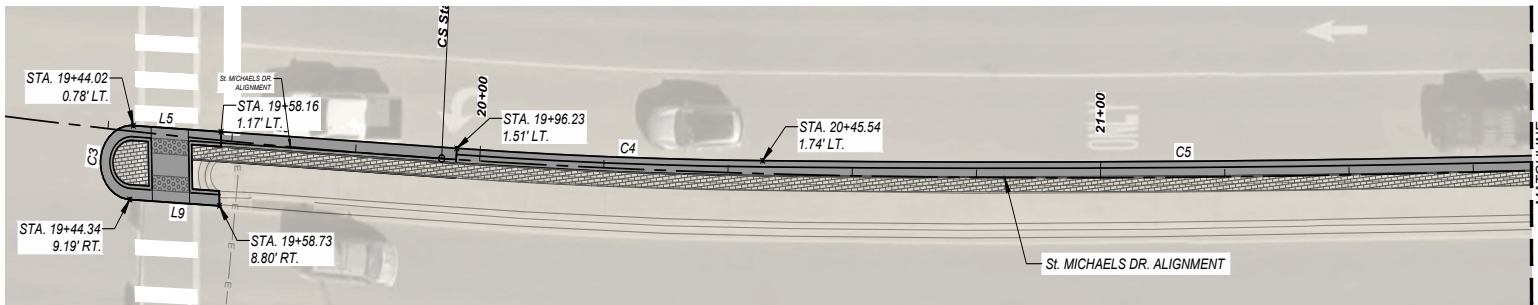
IR	DATE	DESCRIPTION

KEY PLAN

PROJECT NUMBER  
##

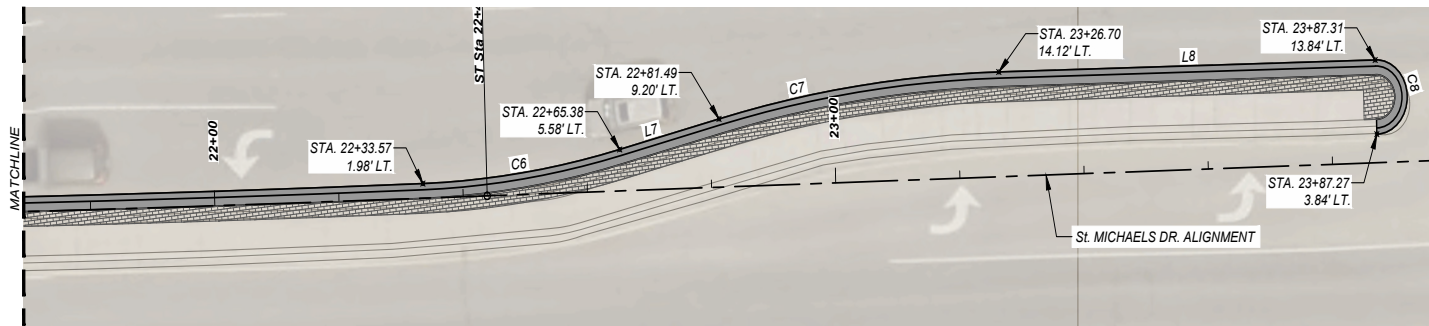
SHEET TITLE  
Intersection Plan

SHEET NUMBER  
2 - #



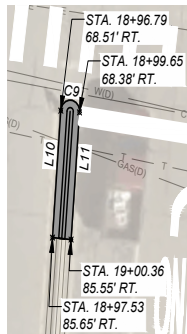
**MEDIAN LAYOUT PLAN**  
**ST. MICHAELS DR. EAST OF LLANO ST.**

SCALE: 1" = 20'



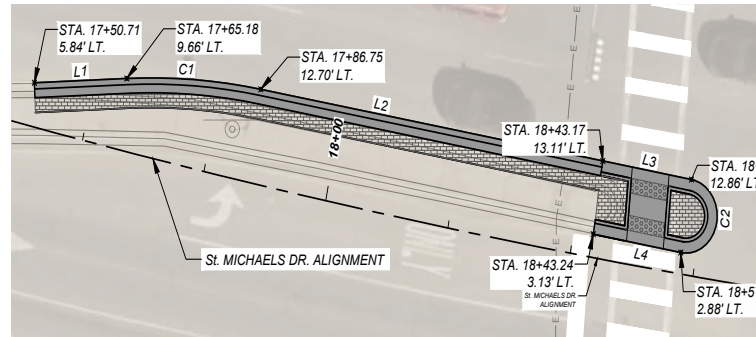
**MEDIAN LAYOUT PLAN**  
**ST. MICHAELS DR. EAST OF LLANO ST.**

SCALE: 1" = 20'



**MEDIAN LAYOUT PLAN**  
**LLANO ST.**

SCALE: 1" = 20'



**MEDIAN LAYOUT PLAN**  
**ST. MICHAELS DR. WEST OF LLANO ST.**

SCALE: 1" = 20'

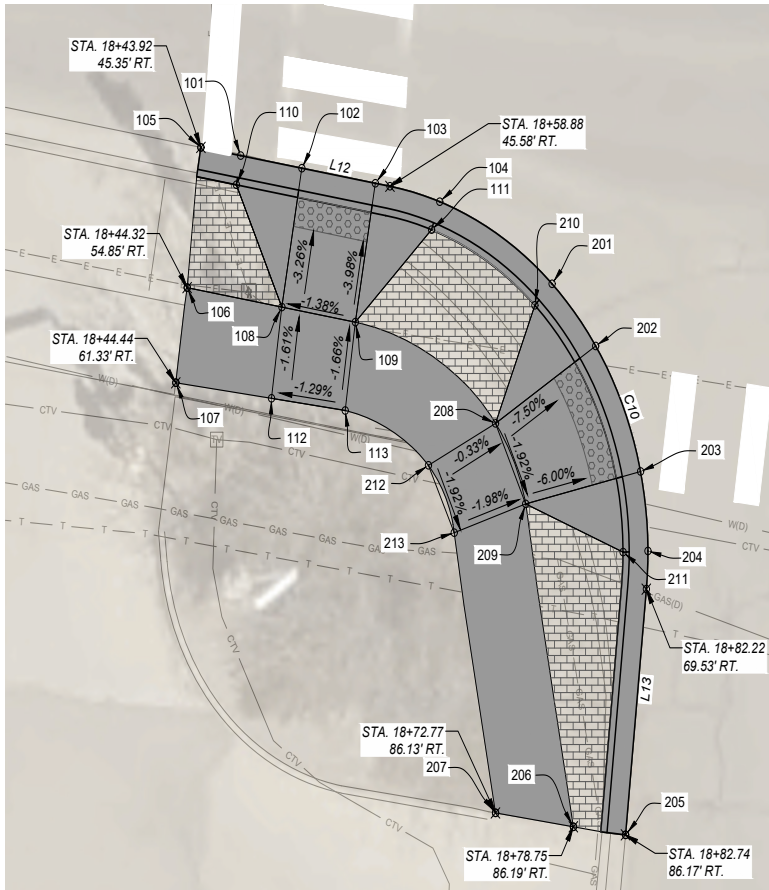
Line Table		
Line #	Length	Direction
L1	14.89'	S87° 47' 00.24"W
L2	55.91'	N80° 03' 10.18"W
L3	14.49'	N80° 03' 10.18"W
L4	14.55'	S80° 03' 10.18"E
L5	14.14'	S86° 38' 02.24"E
L6	38.03'	S86° 38' 02.24"E
L7	16.51'	N75° 32' 37.73"E
L8	60.61'	N88° 28' 18.57"E
L9	14.49'	N86° 38' 02.24"W
L10	17.16'	N04° 28' 54.34"E
L11	17.19'	S04° 28' 54.34"W

Curve Table			
Curve #	Length	Radius	Delta
C1	21.65'	102.00'	012°09'50"
C2	15.68'	4.99'	180°00'00"
C3	15.68'	4.99'	180°00'00"
C4	49.27'	998.00'	002°49'43"
C5	187.92'	4186.69'	002°34'18"
C6	32.07'	148.00'	012°24'56"
C7	45.58'	202.00'	012°55'41"
C8	15.71'	5.00'	180°00'00"
C9	4.71'	1.50'	180°00'00"



IR	DATE	DESCRIPTION

30% NOT FOR CONSTRUCTION



**RAMP LAYOUT PLAN & ADA DETAILS**  
**LLANO ST. WEST RAMP**

SCALE: 1" = 10'

Line Table		
Line #	Length	Direction
L12	15.44'	N80° 14' 09.12"W
L13	16.64'	N05° 45' 58.21"E

Curve Table			
Curve #	Length	Radius	Delta
C10	37.53'	25.00'	086°00'07"

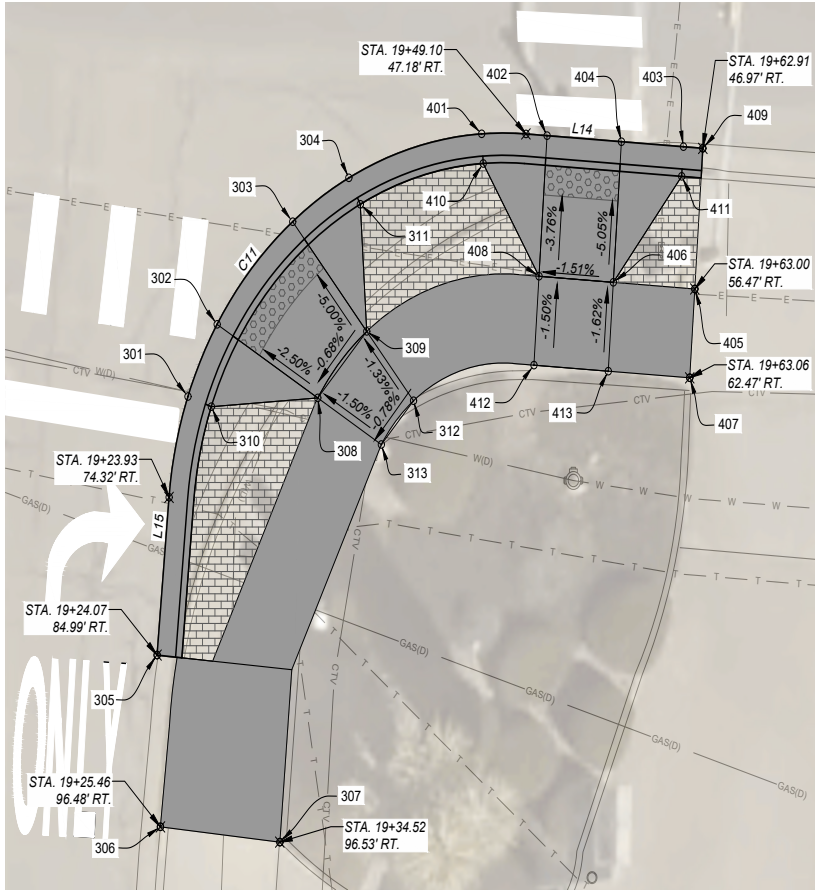
Point Table				
Point #	Raw Description	Elevation	Northing	Easting
101	LIP OF GUTTER	6814.357	1696037.1878	1723424.7366
102	LIP OF GUTTER	6814.428	1696036.3398	1723429.6642
103	LIP OF GUTTER	6814.513	1696035.3223	1723435.5773
104	LIP OF GUTTER	6814.627	1696034.0817	1723440.7642
105	LIP OF GUTTER TIE IN	6814.313	1696037.7381	1723421.5389
106	SIDEWALK TIE IN	6814.823	1696028.2885	1723420.4343
107	SIDEWALK TIE IN	6814.909	1696021.8779	1723419.5188
108	TOP OF SIDEWALK	6814.810	1696026.9775	1723428.0531
109	TOP OF SIDEWALK	6814.891	1696025.9599	1723433.9661
110	TOP BACK OF CURB	6814.760	1696035.2168	1723424.3974
111	TOP BACK OF CURB	6815.030	1696032.1944	1723440.1024
112	BACK SIDEWALK LANDING	6814.910	1696020.8294	1723427.2155
113	BACK SIDEWALK LANDING	6814.990	1696020.0071	1723433.1552

Point Table				
Point #	Raw Description	Elevation	Northing	Easting
201	LIP OF GUTTER	6814.892	1696028.5430	1723449.8012
202	LIP OF GUTTER	6815.022	1696024.3556	1723453.3125
203	LIP OF GUTTER	6815.286	1696015.8929	1723456.9229
204	LIP OF GUTTER	6815.301	1696010.5393	1723457.5155
205	LIP OF GUTTER TIE IN	6815.613	1695991.4092	1723455.7168
206	SIDEWALK TIE IN	6815.938	1695991.9507	1723451.5181
207	SIDEWALK TIE IN	6816.170	1695992.8884	1723445.2510
208	TOP OF SIDEWALK	6815.860	1696019.1395	1723445.2538
209	TOP OF SIDEWALK	6815.860	1696013.7102	1723447.6769
210	TOP BACK OF CURB	6815.290	1696027.0981	1723448.4183
211	TOP BACK OF CURB	6815.700	1696010.4625	1723455.5155
212	BACK SIDEWALK LANDING	6815.880	1696016.3099	1723439.8490
213	BACK SIDEWALK LANDING	6815.980	1696011.7721	1723441.9280



**30% NOT FOR  
 CONSTRUCTION**

IR	DATE	DESCRIPTION



**RAMP LAYOUT PLAN & ADA DETAILS**  
**LLANO ST. EAST RAMP**

SCALE: 1" = 10'

Line Table		
Line #	Length	Direction
L14	14.27'	N86° 06' 06.10"W
L15	10.68'	S05° 11' 47.77"W

Curve Table			
Curve #	Length	Radius	Delta
C11	41.80'	27.00'	088°42'06"

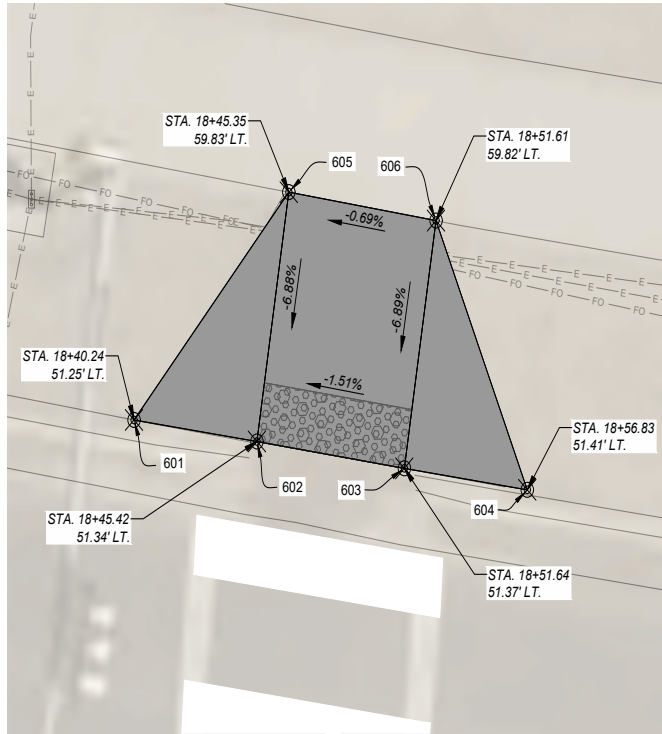
Point Table				
Point #	Raw Description	Elevation	Northing	Easting
301	LIP OF GUTTER	6816.155	1696004.7917	1723501.8301
302	LIP OF GUTTER	6815.995	1696009.6552	1723504.1766
303	LIP OF GUTTER	6815.798	1696016.5740	1723510.2584
304	LIP OF GUTTER	6815.716	1696019.5247	1723514.7809
305	LIP OF GUTTER TIE IN	6816.099	1695987.3636	1723499.3433
306	SIDEWALK TIE IN	6816.093	1695975.7870	1723499.6133
307	SIDEWALK TIE IN	6816.630	1695974.7590	1723509.2280
308	TOP OF SIDEWALK	6816.230	1696004.6923	1723512.2771
309	TOP OF SIDEWALK	6816.270	1696009.1767	1723516.2191
310	TOP BACK OF CURB	6816.560	1696004.1071	1723503.7093
311	TOP BACK OF CURB	6816.120	1696017.7488	1723515.7008
312	BACK SIDEWALK LANDING	6816.350	1696004.5047	1723519.9837
313	BACK SIDEWALK LANDING	6816.320	1696001.5578	1723517.3933

Point Table				
Point #	Raw Description	Elevation	Northing	Easting
401	LIP OF GUTTER	6815.674	1696022.4946	1723525.4693
402	LIP OF GUTTER	6815.705	1696022.3719	1723530.7319
403	LIP OF GUTTER	6815.655	1696021.6241	1723541.7065
404	LIP OF GUTTER	6815.673	1696021.9640	1723536.7181
405	SIDEWALK TIE IN	6816.169	1696012.0394	1723542.6262
406	TOP OF SIDEWALK	6816.153	1696012.4860	1723536.0722
407	SIDEWALK TIE IN	6816.220	1696006.0533	1723542.2183
408	TOP OF SIDEWALK	6816.062	1696012.8939	1723530.0861
409	LIP OF GUTTER TIE IN	6815.654	1696021.5174	1723543.2721
410	TOP BACK OF CURB	6816.070	1696020.4987	1723525.5975
411	TOP BACK OF CURB	6816.050	1696019.6287	1723541.5705
412	BACK SIDEWALK LANDING	6816.150	1696006.9078	1723529.6777
413	BACK SIDEWALK LANDING	6816.252	1696006.4999	1723535.6643



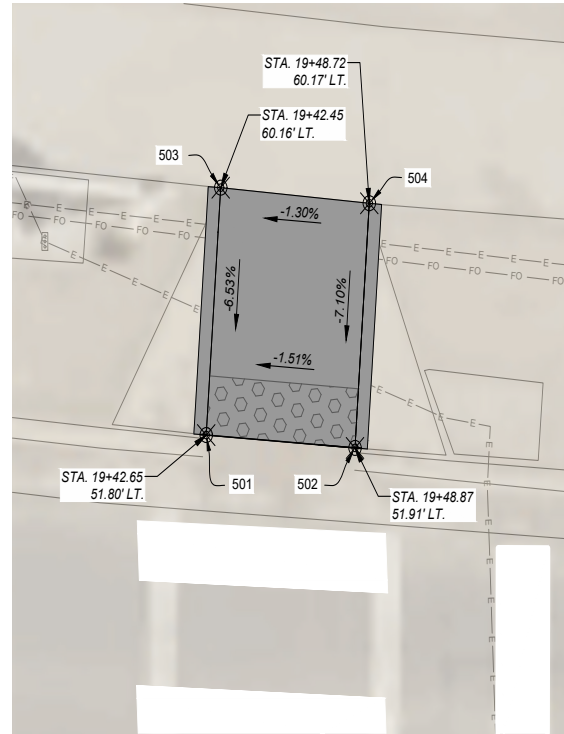
30% NOT FOR CONSTRUCTION

IR	DATE	DESCRIPTION



**RAMP LAYOUT PLAN & ADA DETAILS**  
**ST. MICHAELS DR. WEST RAMP**

SCALE: 1" = 5'



**RAMP LAYOUT PLAN & ADA DETAILS**  
**ST. MICHAELS DR. EAST RAMP**

SCALE: 1" = 5'

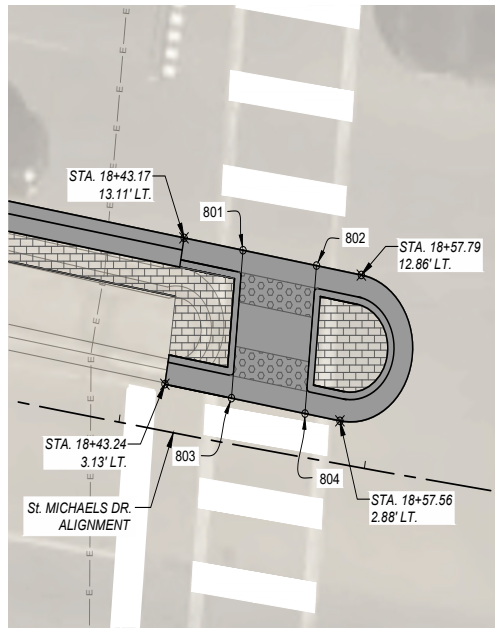
Point Table				
Point #	Raw Description	Elevation	Northing	Easting
601	FLOWLINE CURB AND GUTTER	6813.327	1696133.6694	1723433.5073
602	FLOWLINE CURB AND GUTTER	6812.977	1696132.9443	1723438.4545
603	FLOWLINE CURB AND GUTTER	6813.022	1696132.0390	1723444.3858
604	FLOWLINE CURB AND GUTTER	6813.549	1696131.3157	1723449.3332
605	FRONT OF SIDEWALK	6813.562	1696141.3449	1723439.7367
606	FRONT OF SIDEWALK	6813.604	1696140.3887	1723445.6602

Point Table				
Point #	Raw Description	Elevation	Northing	Easting
501	BOTTOM CURB	6814.343	1696121.6480	1723531.4789
502	BOTTOM CURB	6814.380	1696121.2144	1723537.4632
503	FRONT OF SIDEWALK	6814.888	1696129.9833	1723532.0602
504	FRONT OF SIDEWALK	6814.966	1696129.4595	1723538.0382



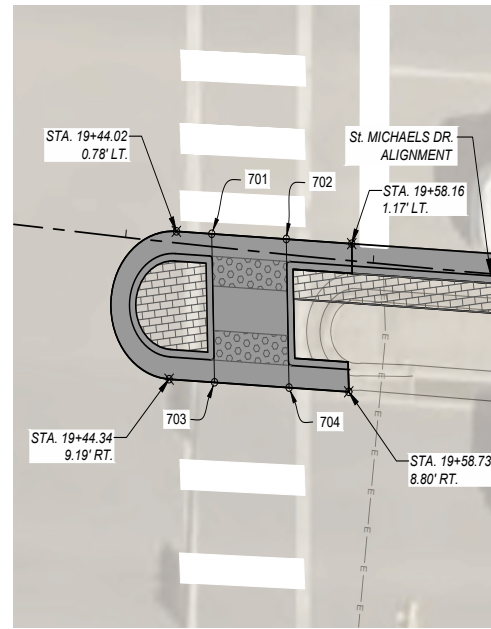
**30% NOT FOR CONSTRUCTION**

IR	DATE	DESCRIPTION



**MEDIAN RAMP ADA DETAILS**  
**ST. MICHAELS DR. WEST OF LLANO ST.**  
 SCALE: 1" = 10'

Point Table				
Point #	Raw Description	Elevation	Northing	Easting
801	LIP OF GUTTER	6813.390	1696094.7334	1723434.9156
802	LIP OF GUTTER	6813.483	1696093.6958	1723440.8315
803	LIP OF GUTTER	6813.601	1696084.7627	1723433.9924
804	LIP OF GUTTER	6813.660	1696083.7252	1723439.9083



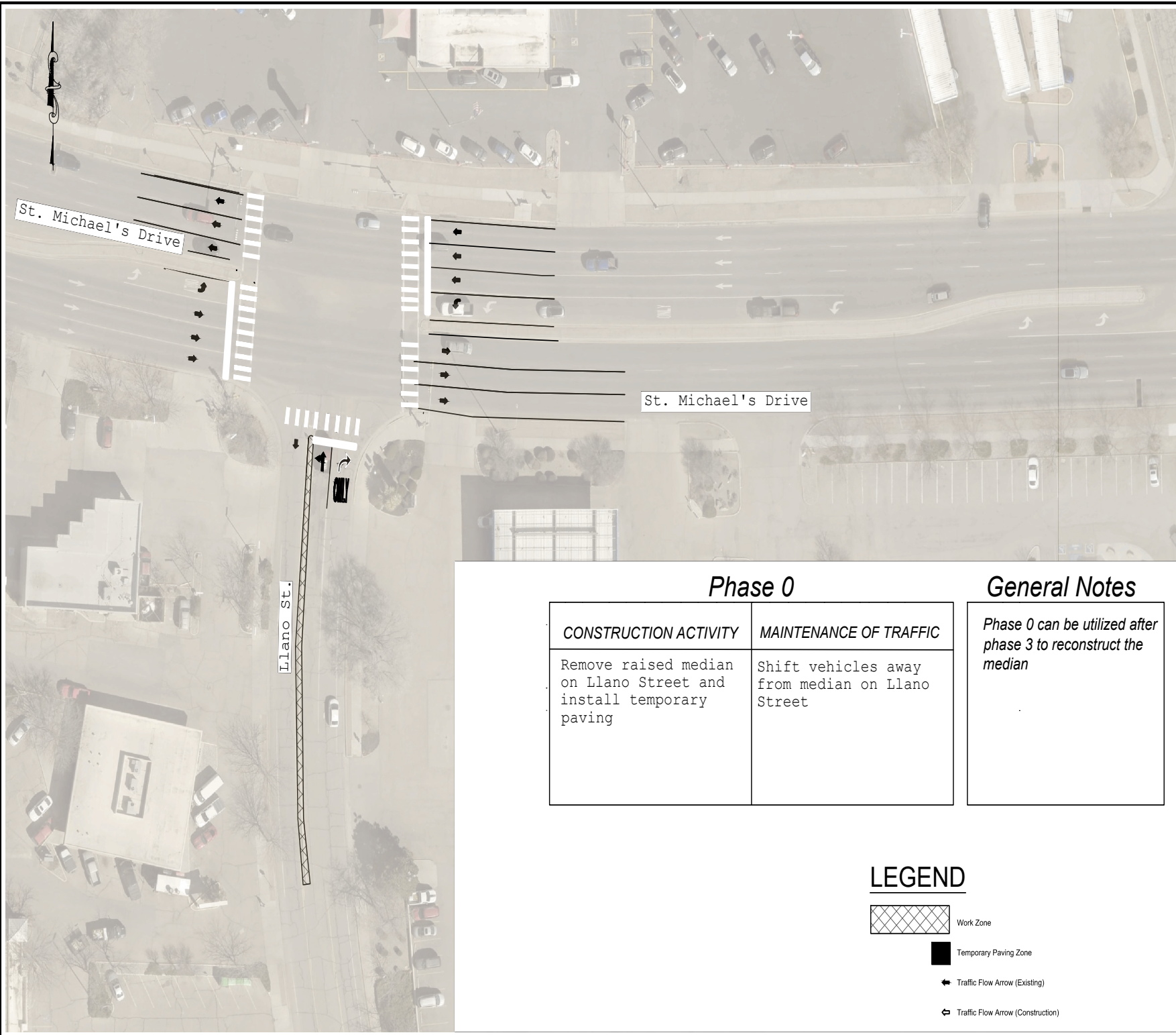
**MEDIAN RAMP ADA DETAILS**  
**ST. MICHAELS DR. EAST OF LLANO ST.**  
 SCALE: 1" = 10'

Point Table				
Point #	Raw Description	Elevation	Northing	Easting
701	LIP OF GUTTER	6814.902	1696070.5505	1723531.0150
702	LIP OF GUTTER	6814.958	1696070.1979	1723537.0102
703	LIP OF GUTTER	6814.976	1696060.5399	1723531.2400
704	LIP OF GUTTER	6815.049	1696060.1872	1723537.2353







30% NOT FOR CONSTRUCTION

IR	DATE	DESCRIPTION



Phase 0		General Notes
CONSTRUCTION ACTIVITY	MAINTENANCE OF TRAFFIC	
Remove raised median on Llano Street and install temporary paving	Shift vehicles away from median on Llano Street	Phase 0 can be utilized after phase 3 to reconstruct the median

### LEGEND

-  Work Zone
-  Temporary Paving Zone
-  Traffic Flow Arrow (Existing)
-  Traffic Flow Arrow (Construction)



**PROJECT**  
 LLANO ST. INTERSECTION IMPROVEMENTS

**CLIENT**  
 CITY of SANTA FE  
 200 Lincoln Avenue  
 Santa Fe, New Mexico 87501  
 T 505.855.6949  
 www.santafenm.gov



**ENGINEERING CONSULTANT**  
 AECOM  
 150 Washington Avenue, Suite 201  
 Santa Fe, New Mexico 87501  
 T 505.855.7500  
 www.aecom.com

**SUBCONSULTANTS**  
 SURVEY  
 COBB, FENDLEY & ASSOCIATES, INC.  
 (305) 303-3882

**REGISTRATION**

**30% NOT FOR CONSTRUCTION**

**ISSUE/REVISION**

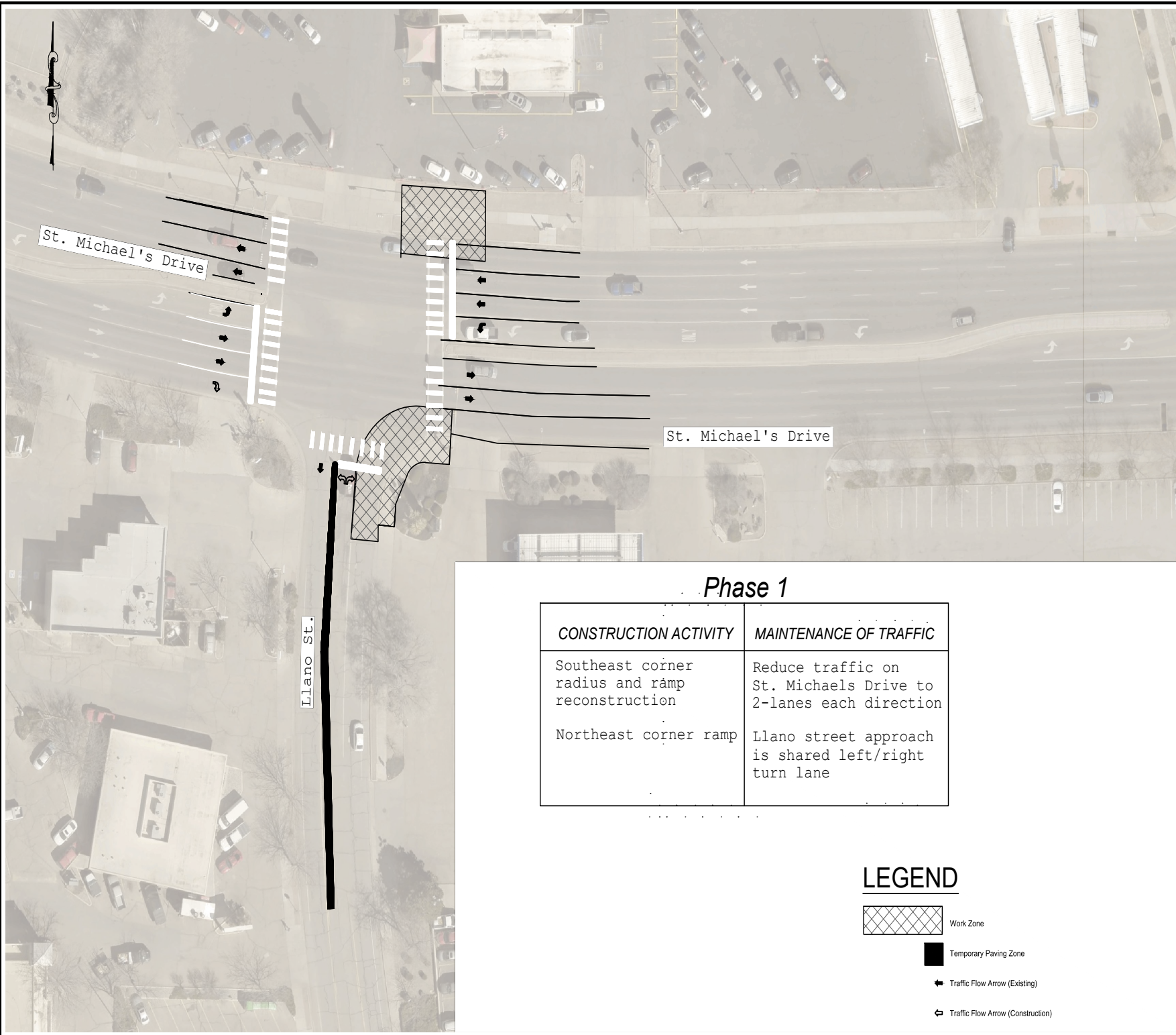
IR	DATE	DESCRIPTION

**KEY PLAN**

**PROJECT NUMBER**

**SHEET TITLE**  
 Phase 0





**SHEET NUMBER**  
 6 - X



### Phase 1

CONSTRUCTION ACTIVITY	MAINTENANCE OF TRAFFIC
Southeast corner radius and ramp reconstruction	Reduce traffic on St. Michaels Drive to 2-lanes each direction
Northeast corner ramp	Llano street approach is shared left/right turn lane

### LEGEND

-  Work Zone
-  Temporary Paving Zone
-  Traffic Flow Arrow (Existing)
-  Traffic Flow Arrow (Construction)



PROJECT

## LLANO ST. INTERSECTION IMPROVEMENTS

CLIENT

### CITY OF SANTA FE

200 Lincoln Avenue  
Santa Fe, New Mexico 87501  
T 505.855.6949  
www.santafem.gov



ENGINEERING CONSULTANT

AECOM  
150 Washington Avenue, Suite 201  
Santa Fe, New Mexico 87501  
T 505.855.7500  
www.aecom.com

SUBCONSULTANTS

SURVEY  
COBB, FENDLEY & ASSOCIATES, INC.  
(505) 303-3882

REGISTRATION

**30% NOT FOR CONSTRUCTION**

ISSUE/REVISION

IR	DATE	DESCRIPTION

KEY PLAN

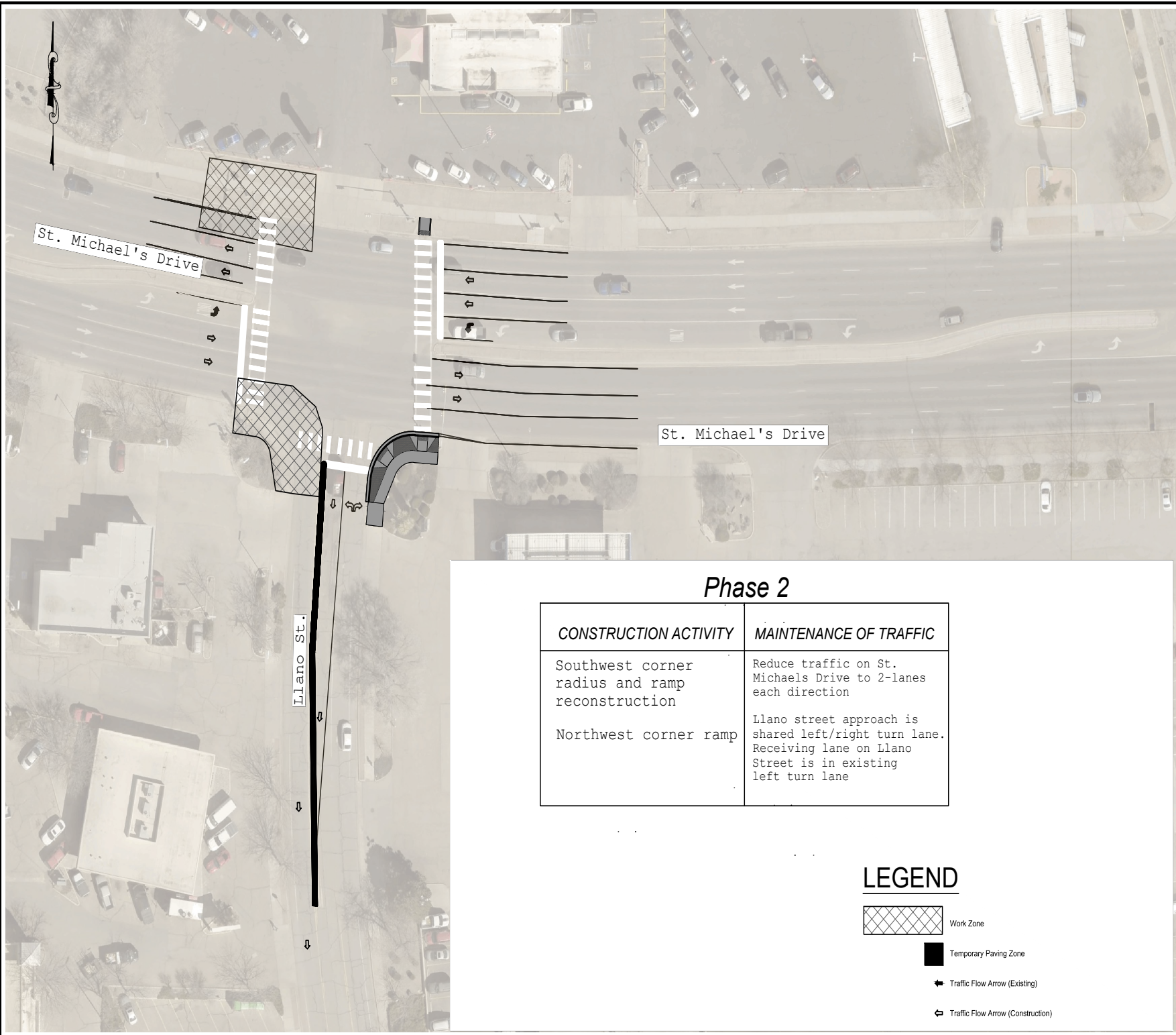
PROJECT NUMBER

SHEET TITLE

Phase 1

SHEET NUMBER





6 - X



### Phase 2

CONSTRUCTION ACTIVITY	MAINTENANCE OF TRAFFIC
Southwest corner radius and ramp reconstruction	Reduce traffic on St. Michaels Drive to 2-lanes each direction
Northwest corner ramp	Llano street approach is shared left/right turn lane. Receiving lane on Llano Street is in existing left turn lane

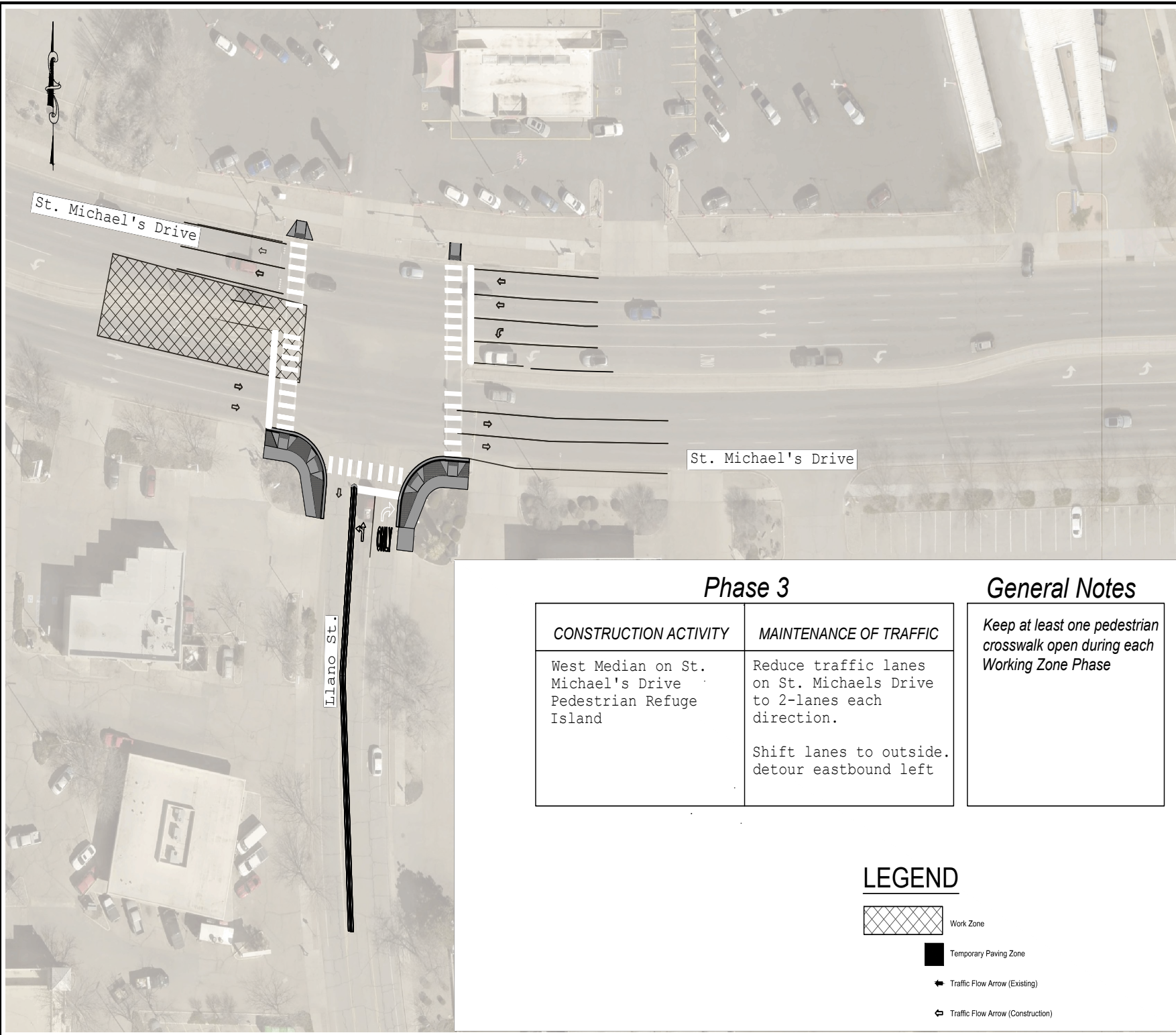
### LEGEND

-  Work Zone
-  Temporary Paving Zone
-  Traffic Flow Arrow (Existing)
-  Traffic Flow Arrow (Construction)



**30% NOT FOR CONSTRUCTION**

IR	DATE	DESCRIPTION







### Phase 3

CONSTRUCTION ACTIVITY	MAINTENANCE OF TRAFFIC
West Median on St. Michael's Drive Pedestrian Refuge Island	Reduce traffic lanes on St. Michaels Drive to 2-lanes each direction.  Shift lanes to outside. detour eastbound left

### General Notes

Keep at least one pedestrian crosswalk open during each Working Zone Phase

### LEGEND

-  Work Zone
-  Temporary Paving Zone
-  Traffic Flow Arrow (Existing)
-  Traffic Flow Arrow (Construction)



PROJECT  
**LLANO ST. INTERSECTION IMPROVEMENTS**

CLIENT  
**CITY OF SANTA FE**  
200 Lincoln Avenue  
Santa Fe, New Mexico 87501  
T 505.855.6949  
www.santafenm.gov



ENGINEERING CONSULTANT  
**AECOM**  
150 Washington Avenue, Suite 201  
Santa Fe, New Mexico 87501  
T 505.855.7500  
www.aecom.com

SUBCONSULTANTS  
SURVEY  
**COBB, FENDLEY & ASSOCIATES, INC.**  
(505) 303-3882

REGISTRATION

ISSUE/REVISION

IR	DATE	DESCRIPTION

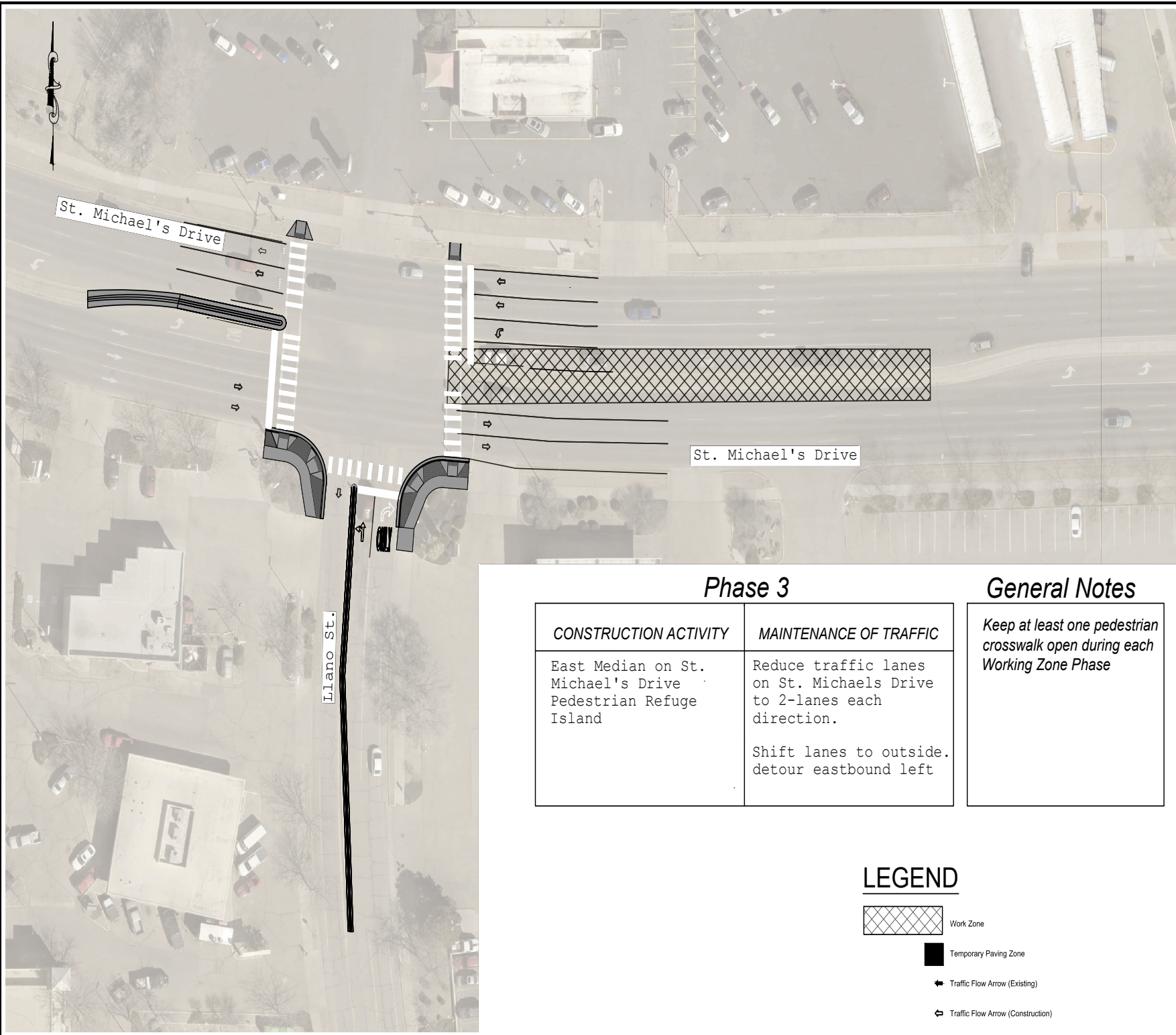
KEY PLAN

PROJECT NUMBER

SHEET TITLE  
Phase 3A

SHEET NUMBER  
6 - X

**30% NOT FOR CONSTRUCTION**







### Phase 3

CONSTRUCTION ACTIVITY	MAINTENANCE OF TRAFFIC
East Median on St. Michael's Drive Pedestrian Refuge Island	Reduce traffic lanes on St. Michaels Drive to 2-lanes each direction.  Shift lanes to outside. detour eastbound left

### General Notes

Keep at least one pedestrian crosswalk open during each Working Zone Phase

### LEGEND

-  Work Zone
-  Temporary Paving Zone
-  Traffic Flow Arrow (Existing)
-  Traffic Flow Arrow (Construction)



PROJECT  
**LLANO ST. INTERSECTION IMPROVEMENTS**

CLIENT  
**CITY OF SANTA FE**  
200 Lincoln Avenue  
Santa Fe, New Mexico 87501  
T 505.855.6949  
www.santafemn.gov



ENGINEERING CONSULTANT  
**AECOM**  
150 Washington Avenue, Suite 201  
Santa Fe, New Mexico 87501  
T 505.855.7500  
www.aecom.com

SUBCONSULTANTS  
SURVEY  
**COBB, FENDLEY & ASSOCIATES, INC.**  
(305) 303-3882

REGISTRATION

ISSUE/REVISION

IR	DATE	DESCRIPTION

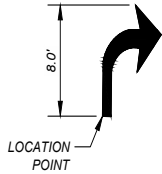
KEY PLAN

PROJECT NUMBER

SHEET TITLE  
Phase 3B

SHEET NUMBER  
6 - X

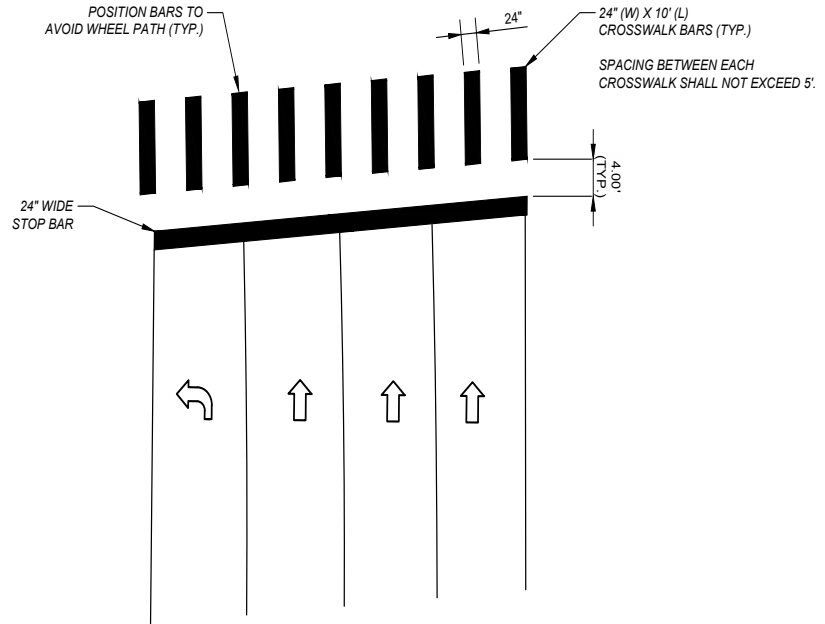
**30% NOT FOR CONSTRUCTION**



STATIONS INDICATED FOR ALL PAVEMENT MARKINGS REFER TO THE BASE OF THE ARROW STEM OR BASE OF LETTERS OR WORD.

**PAVEMENT MARKING AND LOCATION DETAIL**

SCALE: 1" = 16'



**TYPICAL CROSSWALK AND STOP BAR DETAILS**

SCALE: 1" = 16'



30% NOT FOR CONSTRUCTION

IR	DATE	DESCRIPTION

**TRAFFIC SIGNAL NOTES:**

- LOCATIONS OF CONDUITS, FOUNDATIONS, CONTROL CABINETS, POLES, PULL BOXES, MANHOLES, AND SPLICE CABINETS SHOWN ON THE PLANS ARE SCHEMATIC AND SHALL BE ADJUSTED IN THE FIELD TO AVOID UTILITIES AND TO MAXIMIZE CLEAR SPACE AVAILABLE FOR PEDESTRIANS AND WHEELCHAIRS TO COMPLY WITH THE AMERICANS WITH DISABILITIES ACT (ADA). THE CONTRACTOR SHALL MEET WITH THE PROJECT MANAGER IN THE FIELD AT ALL LOCATIONS TO SPOT EQUIPMENT BEFORE BEGINNING THE WORK. ALL SUCH EQUIPMENT SHALL BE INSTALLED WITHIN THE RIGHT-OF-WAY.
- THE CONTRACTOR IS WARNED THAT EXISTING CONDUITS MAY CONTAIN AC POWER AND CAUTION SHALL BE EXERCISED IN INTERCEPTING OR INSTALLING CABLE IN EXISTING CONDUIT.
- MASTARMS SHALL BE PLACED 90° TO THE CENTERLINE UNLESS OTHERWISE NOTED.
- ALL DETECTION DEVICE CABLES SHALL BE TAGGED AT THE CONTROL CABINET TO IDENTIFY EACH CABLE. ALL OPTICAL DETECTOR CABLES SHALL BE TAGGED AT THE CONTROL CABINET TO IDENTIFY EACH BY DIRECTION AND LOCATION.
- EXISTING CONDUITS SHALL BE REPAIRED, ADJUSTED, OR REPLACED AS DIRECTED BY THE PROJECT MANAGER WHERE ELECTRICAL PULL BOXES OR TRAFFIC MANHOLES ARE INSTALLED OR REPLACED. THIS WORK IS INCLUDED IN THE PULL BOX AND WIRING BID ITEMS.
- THE CONTRACTOR SHALL FURNISH FOUNDATION ELEVATIONS TO THE PROJECT MANAGER FOR APPROVAL BEFORE INSTALLATION. THE CONTRACTOR SHALL GRADE AROUND THE FOUNDATIONS TO PROVIDE TRAVERSABLE SLOPES AS DIRECTED BY THE PROJECT MANAGER. THE CONTRACTOR SHALL SUBMIT CROSS-SECTIONS FOR APPROVAL BASED ON ACTUAL FIELD ELEVATIONS. ALL EXCAVATION AND/OR EMBANKMENT REQUIRED WILL BE INCLUDED IN THE DRILLED SHAFT BID ITEMS. ALL FOUNDATIONS LOCATED WITHIN SIDEWALKS OR ADA CURB RAMPS SHALL BE CONSTRUCTED TO MATCH FINISHED GRADE OF SIDEWALKS OR RAMPS.
- SIGNALS NEAR EXISTING OVERHEAD POWER LINES MUST MAINTAIN A VERTICAL CLEARANCE AND/OR A HORIZONTAL CLEARANCE FROM THE CLOSEST PHASE CONDUCTOR. PNM WILL ASSIST IN MEASUREMENT AND DETERMINATION OF CLEARANCE.

**INCIDENTAL ITEMS:**

- CABLE TESTING AND DIAGRAMS INCLUDED IN THE WIRING ITEMS (ITEM# 711005,711007, 711020)
- BORING, DRILLING, PUSHING, AND TRENCHING, INCLUDING REMOVAL AND REPLACEMENT OF PAVEMENT, SIDEWALKS, DRIVE PADS, VALLEY GUTTERS, WHEELCHAIR RAMPS, CURB & GUTTER, AND LANDSCAPING (INCLUDING SPRINKLERS), FOR INSTALLATION OF PULL BOXES, CONDUITS, AND SIGNAL FOUNDATIONS, EXCEPT AS NOTED ON THE PLANS. THIS IS INCLUDED IN RIGID ELECTRICAL CONDUIT X"(DJA) (ITEM# 709020, 709030)
- LOCATIONS OF UTILITY LINES INCLUDING EXPLORATORY TRENCHING AND EXPOSING OF GAS LINES WHEN A POTENTIAL CONFLICT IS IDENTIFIED PRIOR TO BORING. THIS WORK IS INCLUDED IN RIGID ELECTRICAL CONDUIT X"(DIA) (ITEM# 709020, 709030)
- DESIGN, MATERIALS, INSTALLATION AND REMOVAL OF SAFETY BARRIER FOR SHIELDING EQUIPMENT OR MATERIAL. THIS IS INCLUDED IN RIGID ELECTRICAL CONDUIT X"(DIA) (ITEM# 709020, 709030)
- PULL BOX ADJUSTMENT TO GRADE. IF NEEDED, INCLUDED IN PULL BOXES (ITEM# 71000, 710010)
- OFF-DUTY POLICE OFFICER FOR TRAFFIC CONTROL. INCLUDED 618000 TRAFFIC CONTROL MANAGEMENT
- EQUIPMENT MANUFACTURER'S ASSISTANCE TO INSTALL, SET UP, PROGRAM, TURN ON, FIELD TEST, AND PROVIDE TRAINING FOR TRAFFIC SIGNAL EQUIPMENT INCLUDING THE (DETECTION EQUIPMENT, AND EMERGENCY VEHICLE PREEMPTION EQUIPMENT). INCLUDED IN ITEM 714000 TRAFFIC ACTUATED CONTROLLER
- ANCHOR BOLTS FOR FOUNDATIONS IS INCLUDED IN THE REBAR (ITEM# 502048 & 540060)
- PULL STRINGS FOR EMPTY CONDUITS. THIS IS INCLUDED IN RIGID ELECTRICAL CONDUIT X"(DJA) (ITEM# 709020, 709030)

**SYMBOL KEY**

- C** CONTROL CABINET
- M** METER PEDESTAL W/ UPS
- #** CONDUIT RUN ID (SIGNAL)
- S#** CONDUIT RUN ID (POWER SERVICE)
- SIGNAL HEAD ON POLE
- PEDESTRIAN SIGNAL HEAD AND PEDESTRIAN PUSH BUTTON ON POLE
- SIGNAL HEAD ON MAST ARM
- TRENCHED CONDUIT RUN
- BORED CONDUIT RUN

**ABBREVIATIONS**

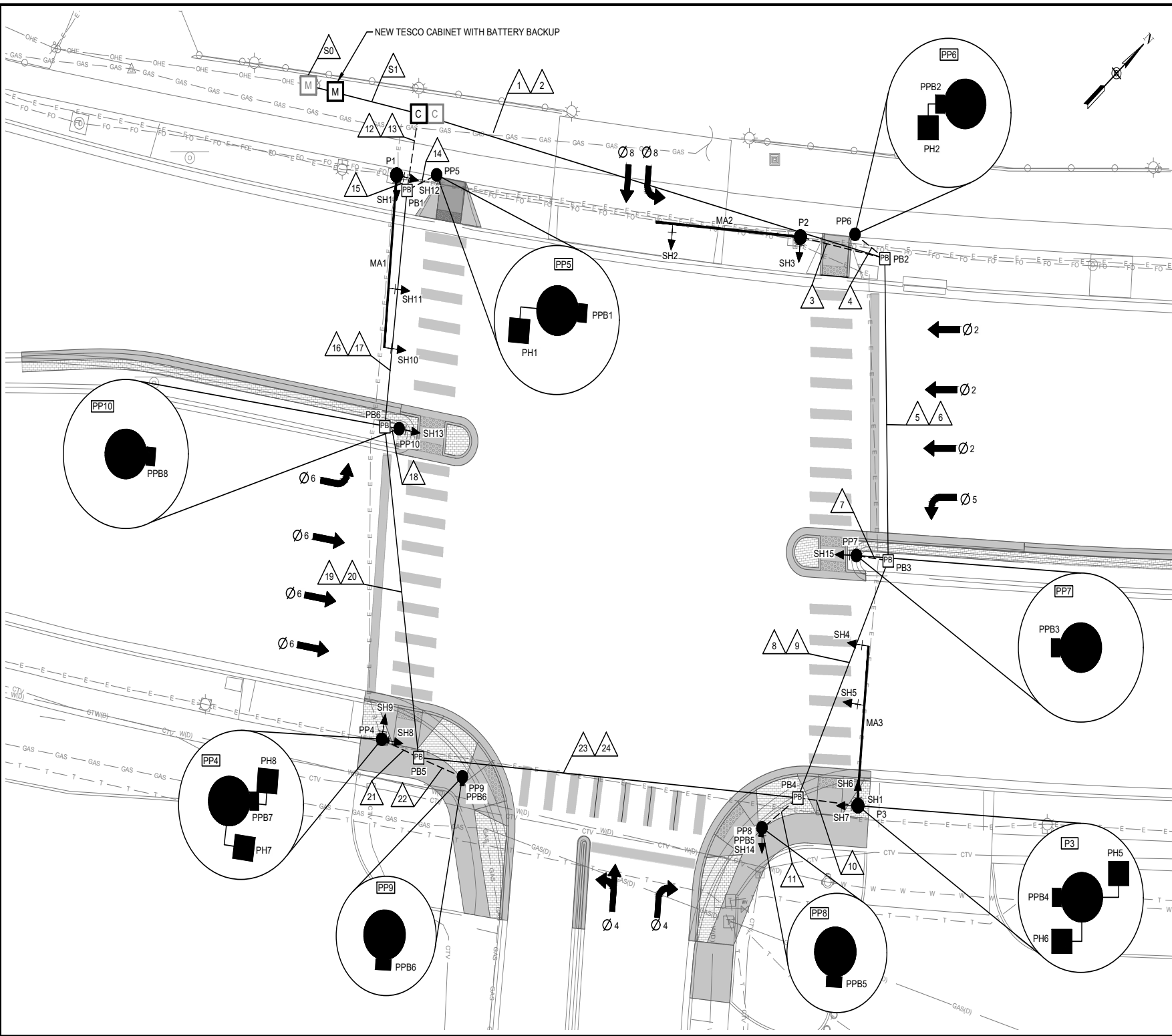
- MA# MAST ARM NUMBER
- PH# MAST ARM POLE NUMBER
- PP# PEDESTAL POLE NUMBER
- SH# SIGNAL HEAD NUMBER
- PH# PEDESTRIAN SIGNAL HEAD NUMBER
- PPB# PEDESTRIAN PUSH BUTTON NUMBER
- PB# PULL BOX NUMBER (SIGNALS)

SUMMARY OF TRAFFIC SIGNAL QUANTITIES			
ITEM NO.	ITEM DESCRIPTION	UNIT	QUANTITY
511000	STRUCTURAL CONCRETE, CLASS A	CY	5
540060	REINFORCING BARS GRADE 60	LBS	1,100
706100	SERVICE RISER (SIGNAL)	EACH	1
	TESCO CABINET WITH BATTERY BACKUP	EACH	1
707015	TYPE 1 STANDARD, 15'	EACH	2
707013	TYPE 1 STANDARD, 13'	EACH	4
707004	TYPE 1 STANDARD, 4'	EACH	1
709020	RIGID ELECTRICAL CONDUIT 2" (DIA.)	LF	1182
709030	RIGID ELECTRICAL CONDUIT 3" (DIA.)	LF	1076
710010	PULLBOX (LARGE)	EACH	6
711007	MULTICONDUCTOR 5	LF	550
711020	MULTICONDUCTOR 20	LF	1636
712031	3 SECTION TRAFFIC SIGNAL ASSEMBLY (LED)	EACH	2
712041	4 SECTION TRAFFIC SIGNAL ASSEMBLY (LED)	EACH	6
712202	PEDESTRIAN COUNTDOWN SIGNAL (LED)	EACH	2
712330	3 SECTION BACKPLATE	EACH	2
712340	4 SECTION BACKPLATE	EACH	1
713010	LOOP VEHICLE DETECTOR	EACH	10
713025	ACCESSIBLE PEDESTRIAN SIGNAL PUSH BUTTON STATION	EACH	6
713250	LOOP LEAD-IN-CABLE	LF	1190
713440	PHASE SELECTOR RACK, 4 CHANNEL	EACH	1
714000	TRAFFIC ACTUATED CONTROLLER	EACH	1
	TRAFFIC SIGNAL TO BE REMOVED FROM MAST ARM	EACH	3
	TRAFFIC SIGNAL TO BE REMOVED FROM EXISTING POLE	EACH	2



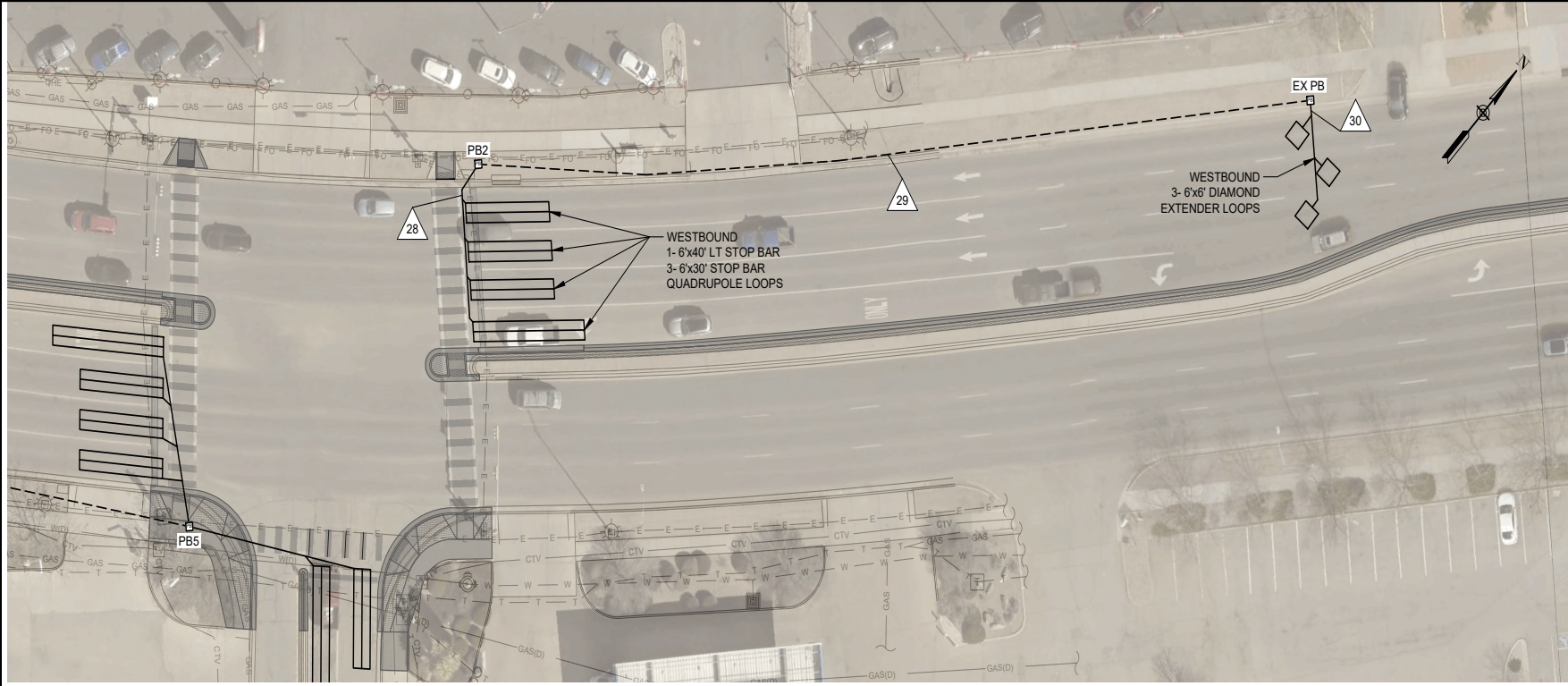
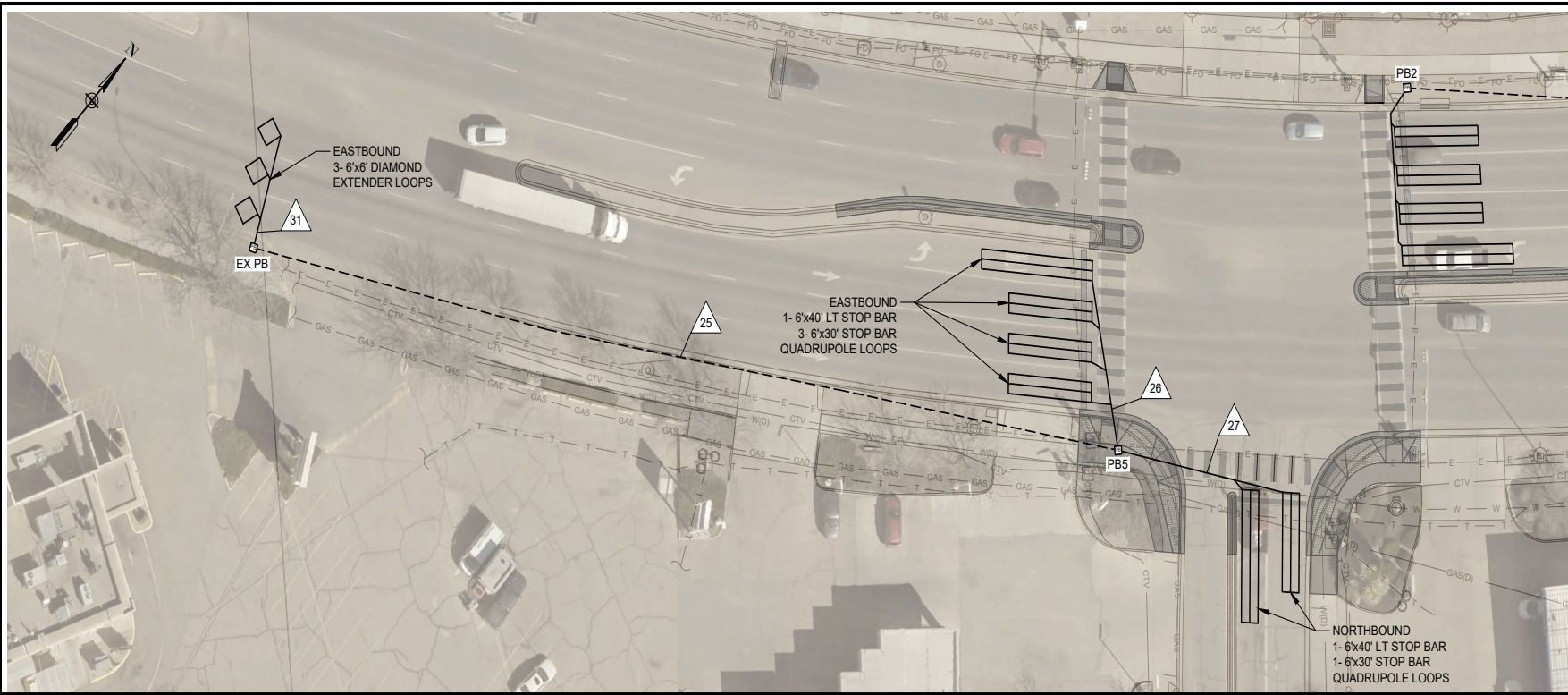
IR	DATE	DESCRIPTION

**30% NOT FOR  
CONSTRUCTION**



**30% NOT FOR CONSTRUCTION**

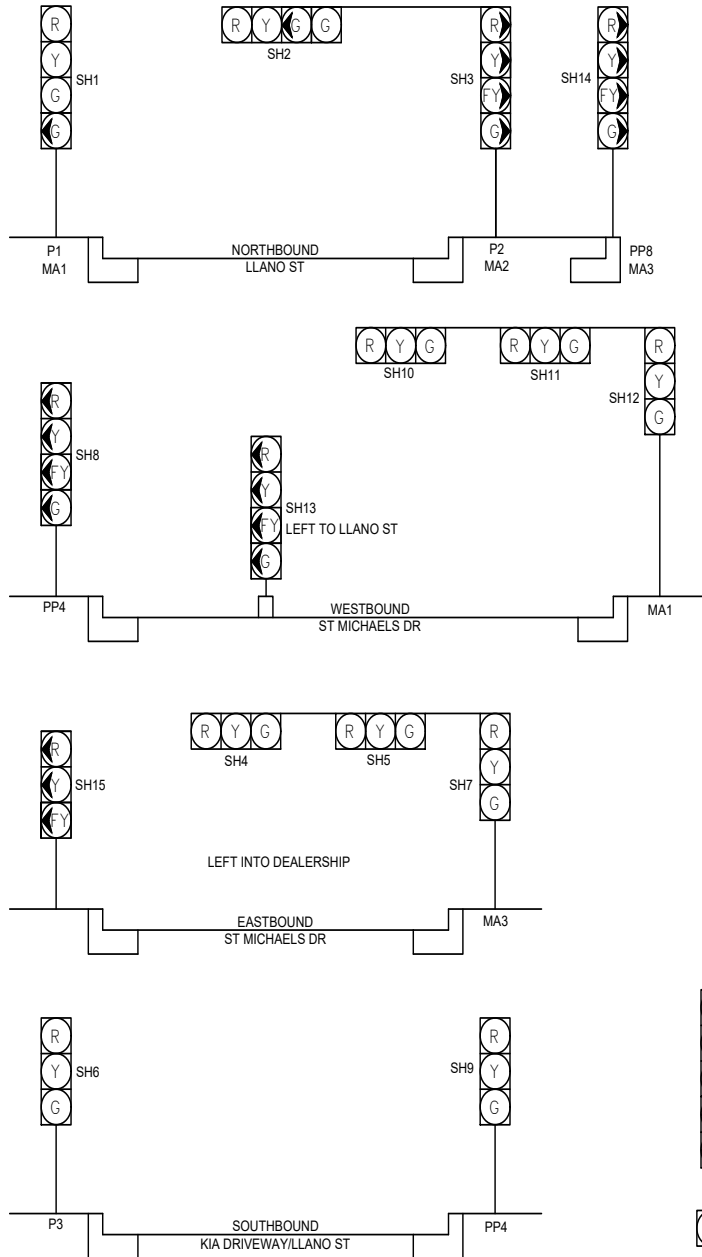
IR	DATE	DESCRIPTION



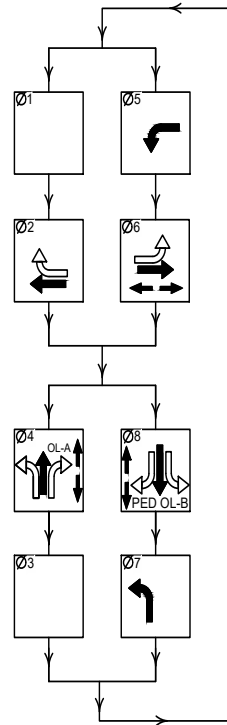
**30% NOT FOR CONSTRUCTION**

IR	DATE	DESCRIPTION

**TRAFFIC SIGNAL CONFIGURATION BY APPROACH**

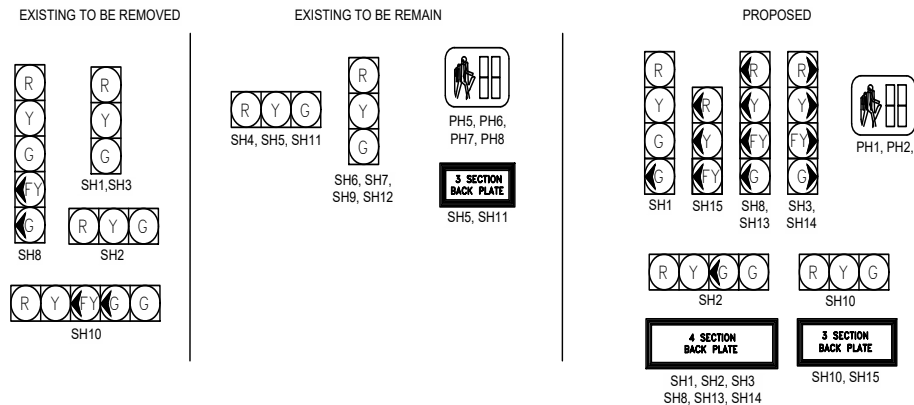


**SIGNAL PHASING**



04 IS LAG PHASE. THE LEFT TURN ARROW ACTIVATES WHEN THERE IS NO PEDESTRIAN OL-B OR VEHICLES FROM DEALERSHIP. OL-A = 04 + 05  
LEADING PEDESTRIAN 04 INTERVAL OF 7 SECONDS. 07 SHOULD BE DUAL ENTRY AND ACTIVE ONLY WHEN THERE IS NO VEHICLE OR PEDESTRIAN CALL ON 08.

**TYPICAL SIGNAL FACE LENS ARRANGEMENTS**



IR	DATE	DESCRIPTION

**30% NOT FOR CONSTRUCTION**

CONDUIT AND CONDUCTOR REQUIREMENTS - TABLE 1								
RUN	LOCATION	CONDUIT SIZE, LENGTH			CONDUCTOR SIZE, LENGTH & TYPE			
		2 IN (FT)	3 IN (FT)	3 IN (FT)	MCC5 (# @ FT)	MCC20 (# @ FT)	LOOP LEAD IN CABLE (FT)	SCC2 (# @ FT)
S0	POLE TO METER							
S1	METER TO CONTROLLER		32	32			PULL ROPE	2 @ 38
1	CONTROLLER TO PB2			116			4 @ 122	125
2	CONTROLLER TO PB2	116	116				PULL ROPE	
3	PB2 TO P2	21		21			2 @ 27	
4	PB2 TO PP6	9		9	2 @ 15		2 @ 15	
5	PB2 TO PB3			61	2 @ 67		2 @ 67	
6	PB2 TO PB3	61	61				PULL ROPE	
7	PB3 TO PP7	8		8	2 @ 14		PULL ROPE	
8	PB3 TO PB4			53	2 @ 59		2 @ 59	
9	PB3 TO PB4	53	53				PULL ROPE	
10	PB4 TO P3	15		15	2 @ 21		2 @ 21	
11	PB4 TO PP8	11		11	2 @ 17		2 @ 17	
12	CONTROLLER TO PB1			17			2 @ 23	25
13	CONTROLLER TO PB1	17	17				PULL ROPE	
14	PB1 TO PP5	8		8	2 @ 14		2 @ 14	
15	PB1 TO P1	4		4			2 @ 10	
16	PB1 TO PB6			48			PULL ROPE	50
17	PB1 TO PB6	48	48				PULL ROPE	
18	PB6 TO PP10	4		4	2 @ 10		PULL ROPE	
19	PB6 TO PB5			68			2 @ 74	70
20	PB6 TO PB5	68	68				PULL ROPE	
21	PB5 TO PP4	10		10	2 @ 14		2 @ 14	
22	PB5 TO PP9	12		12	2 @ 16			
23	PB4 TO PB5		92				PULL ROPE	
24	PB4 TO PB5	92	92				PULL ROPE	
25	PB5 to EX PB	320						320
26	PB5 to EB LOOPS							75
27	PB to NB LOOPS							70
28	PB2 to VB LOOPS							60
29	PB2 TO EX PB	305						305
30	EX PB to WB DIAMONDS							45
31	EX PB to EB DIAMONDS							45
<b>INTERSECTION TOTAL (FT)</b>		<b>1182</b>	<b>579</b>	<b>497</b>	<b>502</b>	<b>1174</b>	<b>1190</b>	<b>76</b>

- NOTES:  
 1. INCLUDE 6' FOR CONDUIT BEND  
 2. NYLON PULL ROPE INCIDENTAL

FUNCTION CHART - 115 VOLT CIRCUIT (SIGNAL AND PED HEADS)						
CONDUCTOR			RING 1 - MULTI CONDUCTOR CABLE 20	RING 2 - MULTI CONDUCTOR CABLE 20		
CONDUCTOR NUMBER	BASE COLOR	TRACER	FUNCTION	FUNCTION CONNECTION	FUNCTION	FUNCTION CONNECTION
1	BLACK	-	SPARE		SPARE	
2	WHITE	-	SPARE		SPARE	
3	RED	-	PHASE 1 RED		PHASE 5 RED	SH8,SH13
4	GREEN	-	PHASE 1 GREEN		PHASE 5 GREEN	SH8,SH13
5	ORANGE	-	PHASE 1 YELLOW		PHASE 5 YELLOW	SH8,SH13
6	BLUE	-	SPARE		SPARE	
7	WHITE	BLACK	SPARE		SPARE	
8	RED	BLACK	PHASE 2 RED	SH10,SH11,SH12	PHASE 6 RED	SH4,SH5,SH7, SH15
9	GREEN	BLACK	PHASE 2 GREEN	SH10,SH11,SH12	PHASE 6 GREEN	SH4,SH5,SH7, SH15
10	ORANGE	BLACK	PHASE 2 YELLOW	SH10,SH11,SH12	PHASE 6 YELLOW	SH4,SH5,SH7, SH15
11	BLUE	BLACK	PHASE 2 WALK		PHASE 6 WALK	PH6,PH7
12	BLACK	WHITE	PHASE 2 DONT WALK		PHASE 6 DONT WALK	PH6,PH7
13	RED	WHITE	PHASE 3 RED		PHASE 7 RED	
14	GREEN	WHITE	PHASE 3 GREEN		PHASE 7 GREEN	
15	BLUE	WHITE	PHASE 3 YELLOW		PHASE 7 YELLOW	
16	BLACK	RED	PHASE 4 RED	SH1,SH2,SH3,SH14	PHASE 8 RED	SH6,SH9
17	WHITE	RED	PHASE 4 GREEN	SH1,SH2,SH3,SH14	PHASE 8 GREEN	SH6,SH9
18	ORANGE	RED	PHASE 4 YELLOW	SH1,SH2,SH3,SH14	PHASE 8 YELLOW	SH6,SH9
19	BLUE	BLACK	PHASE 4 WALK	PH2,PH5	PHASE 8 WALK	PH1,PH8
20	BLACK	WHITE	PHASE 4 DONT WALK	PH2,PH5	PHASE 8 DONT WALK	PH1,PH8

FUNCTION CHART - 24 VOLT CIRCUIT (PED BUTTONS)						
CONDUCTOR			RING 1 - MULTI CONDUCTOR CABLE 5	RING 2 - MULTI CONDUCTOR CABLE 5		
NUMBER	BASE COLOR	TRACER	FUNCTION	FUNCTION CONNECTION	FUNCTION	FUNCTION CONNECTION
1	BLACK	-	PHASE 2		SPARE	
2	WHITE	-	COMMON	COMMON	COMMON	COMMON
3	RED	-	PHASE 4	PPB2,PPB3,PPB4	SPARE	
4	GREEN	-	SPARE		PHASE 6	PPB5,PPB6
5	ORANGE	-	SPARE		PHASE 8	PPB1,PPB7,PPB8

CONDUIT AND CONDUCTOR REQUIREMENTS - TABLE 2			
RUN	LOCATION	CONDUCTOR SIZE, LENGTH & TYPE	
		MCC5 (# @ FT)	MCC20 (# @ FT)
P1	BASE TO PPB1	1 @ 6	
P1	BASE TO PH1		1 @ 12
P1	BASE TO SH1		1 @ 20
P1	BASE TO SH12		2 @ 20
MA1	BASE TO SH11		1 @ 40
MA1	BASE TO SH10		1 @ 50
P2	BASE TO SH3		2 @ 20
MA2	BASE TO SH2		1 @ 50
P3	BASE TO PPB4	1 @ 6	
P3	BASE TO PH5		1 @ 12
P3	BASE TO PH6		1 @ 12
P3	BASE TO SH6		2 @ 20
P3	BASE TO SH7		1 @ 20
MA3	BASE TO SH5		1 @ 40
MA3	BASE TO SH4		1 @ 50
PP4	BASE TO PPB7	1 @ 6	
PP4	BASE TO PH7		1 @ 12
PP4	BASE TO PH8		1 @ 12
PP4	BASE TO SH8		1 @ 20
PP4	BASE TO SH9		1 @ 20
PP5	BASE TO PPB1	1 @ 6	
PP5	BASE TO PH1		1 @ 12
PP6	BASE TO PPB2	1 @ 6	
PP6	BASE TO PH2		1 @ 12
PP7	BASE TO PPB3	1 @ 6	
PP8	BASE TO PPB5	1 @ 6	
PP8	BASE TO SH14		1 @ 20
PP9	BASE TO PPB6	1 @ 6	
PP10	BASE TO PPB8	1 @ 6	
PP10	BASE TO SH13		1 @ 20
<b>TOTAL (FT)</b>		<b>48</b>	<b>462</b>



PROJECT

LLANO ST. INTERSECTION IMPROVEMENTS

CLIENT

CITY of SANTA FE



200 Lincoln Avenue  
 Santa Fe, New Mexico 87504  
 T 505.855.6949  
 www.santafem.gov

ENGINEERING CONSULTANT

AECOM  
 150 Washington Avenue, Suite 201  
 Santa Fe, New Mexico 87501  
 T 505.855.7500  
 www.aecom.com

SUBCONSULTANTS

SURVEY  
 COBB, FENDLEY & ASSOCIATES, INC.  
 (505) 303-3882

REGISTRATION

30% NOT FOR CONSTRUCTION

ISSUE/REVISION

IR	DATE	DESCRIPTION

KEY PLAN

PROJECT NUMBER

SHEET TITLE

TRAFFIC SIGNAL DETAILS  
 2 OF 2

SHEET NUMBER