



# AGENDA

PUBLIC SAFETY COMMITTEE  
MAY 21, 2024  
4:00 PM  
CITY HALL, COUNCIL  
CHAMBERS  
200 LINCOLN AVENUE

---

## PROCEDURES FOR PUBLIC SAFETY COMMITTEE MEETING

**Written Public Comment:** Members of the public may submit written comments on legislation by clicking on the comment bubble to the right of the meeting on the public portal at <https://santafe.primegov.com/public/portal> three hours prior to the start of the meeting.

The agenda and packet for the meeting will be posted at <https://santafe.primegov.com/public/portal>.

1. **CALL TO ORDER**
2. **ROLL CALL**
3. **APPROVAL OF AGENDA**
4. **APPROVAL OF MINUTES**
  - a. 4-16-24 PSC Minutes
5. **PRESENTATIONS**

- a. "Know Your Zone" Wildland Urban Interface Evacuation Management GIS Application by Kyle Morgan, Emergency Management Specialist  
<https://arcg.is/OrnWO00>
6. **MATTERS FROM POLICE, CHIEF PAUL JOYE**
  - a. April 2024 Crime Stats and Crime Mapping
7. **MATTERS FROM FIRE, CHIEF BRIAN MOYA**
8. **MATTERS FROM EMERGENCY MANAGEMENT DIRECTOR BRIAN WILLIAMS**
9. **MATTERS FROM THE COMMUNITY HEALTH AND SAFETY DIRECTOR**
10. **MATTERS FROM RECC, ROBERTO LUJAN**
11. **MUNICIPAL COURT REPORT**
  - a. April 2024 Municipal Court Report
12. **COMMUNICATIONS FROM THE PUBLIC**
13. **MATTERS FROM THE COMMITTEE**
14. **NEXT MEETING: Tuesday, June 18, 2024**
15. **ADJOURN**



# MINUTES

REGULAR MEETING OF  
THE PUBLIC SAFETY  
COMMITTEE  
APRIL 16, 2024

---

## 1. CALL TO ORDER

Start time: 4:32 p.m.

## 2. ROLL CALL

### **Members Present:**

Member Bruce Finger  
Member Khal Spencer  
Member Julie Glassmoyer  
Member James T. Bolleter  
Chair Amanda Chavez  
Member Aric Wheeler

### **Members Excused:**

None

### **Others Attending:**

Katherine Christner, Administrative Manager  
Brian Moya, Fire Chief  
Paul Joye, Police Chief  
Matthew Champlin, Attendee  
Thomas Grundler, Attendee  
Sten Johnson, Attendee  
Freddie Martinez, Attendee  
Aaron Ortiz, Attendee  
Bryan Martinez, Attendee

Also in attendance: Brian Williams and Kyle Morgan, OEM, Cassandra Tapia, Crime Analyst, Fire Marshall, Mobile Response and Wildland Fire Department staff.

## 3. APPROVAL OF AGENDA

**MOTION:** Member Bolleter moved, seconded by Member Finger, to approve the as presented.

**VOTE:** The motion was approved on the following Roll Call vote:

**For:** Member Finger, Member Spencer, Member Glassmoyer, Member Bolleter,



# MINUTES

REGULAR MEETING OF  
THE PUBLIC SAFETY  
COMMITTEE  
APRIL 16, 2024

---

Chair Chavez, Member Wheeler

**Against:** None

**Abstain:** None

## 4. APPROVAL OF MINUTES

- a. 2-20-24 Minutes

**MOTION:** Member Bolleter moved, seconded by Member Finger, to approve the as presented.

**VOTE:** The motion was approved on the following Roll Call vote:

**For:** Member Finger, Member Spencer, Member Glassmoyer, Member Bolleter, Chair Chavez, Member Wheeler

**Against:** None

**Abstain:** None

## 5. PRESENTATIONS

## 6. DISCUSSION ITEMS

## 7. ACTION ITEMS

## 8. MATTERS FROM POLICE, CHIEF PAUL JOYE

- a. March 2024 Crime Stats and Crime Mapping

## 9. MATTERS FROM FIRE, CHIEF BRIAN MOYA

- a. We would like to extend our appreciation to the exemplary staff members of the Santa Fe Fire Department for their dedication and remarkable



# MINUTES

REGULAR MEETING OF  
THE PUBLIC SAFETY  
COMMITTEE  
APRIL 16, 2024

service to ensuring the safety and well-being of our community. Sten Johnson, Assistant Chief – Support Services, [sajohnson@santafenm.gov](mailto:sajohnson@santafenm.gov).

**Committee Review:**  
Public Safety Committee: 04/16/2024

10. **MATTERS FROM EMERGENCY MANAGEMENT DIRECTOR BRIAN WILLIAMS**
11. **MATTERS FROM THE COMMUNITY HEALTH AND SAFETY DIRECTOR**
12. **MATTERS FROM RECC, ROBERTO LUJAN**
13. **MUNICIPAL COURT REPORT**
  - a. March Municipal Court report
14. **COMMUNICATIONS FROM THE PUBLIC**
15. **MATTERS FROM THE COMMITTEE**
16. **NEXT MEETING: May 21 2024**
17. **ADJOURN**

End time: 530 p.m.

*KATHERINE CHRISTNER*

\_\_\_\_\_  
Liaison

\_\_\_\_\_  
Chair

# Know Your Zone Wildfire Evacuation Application

A proactive approach to evacuation management by the City of Santa Fe Office of Emergency Management



CITY OF SANTA FE  
EMERGENCY MANAGEMENT

---

# Background

---

## Project Initiation:

- OEM contracted with local GIS firm, SimTable
- Objective: Develop evacuation zones for Santa Fe's WUI

## Goal:

- Proactive preparedness for potential wildfires
- Protect lives and property

# Process Overview

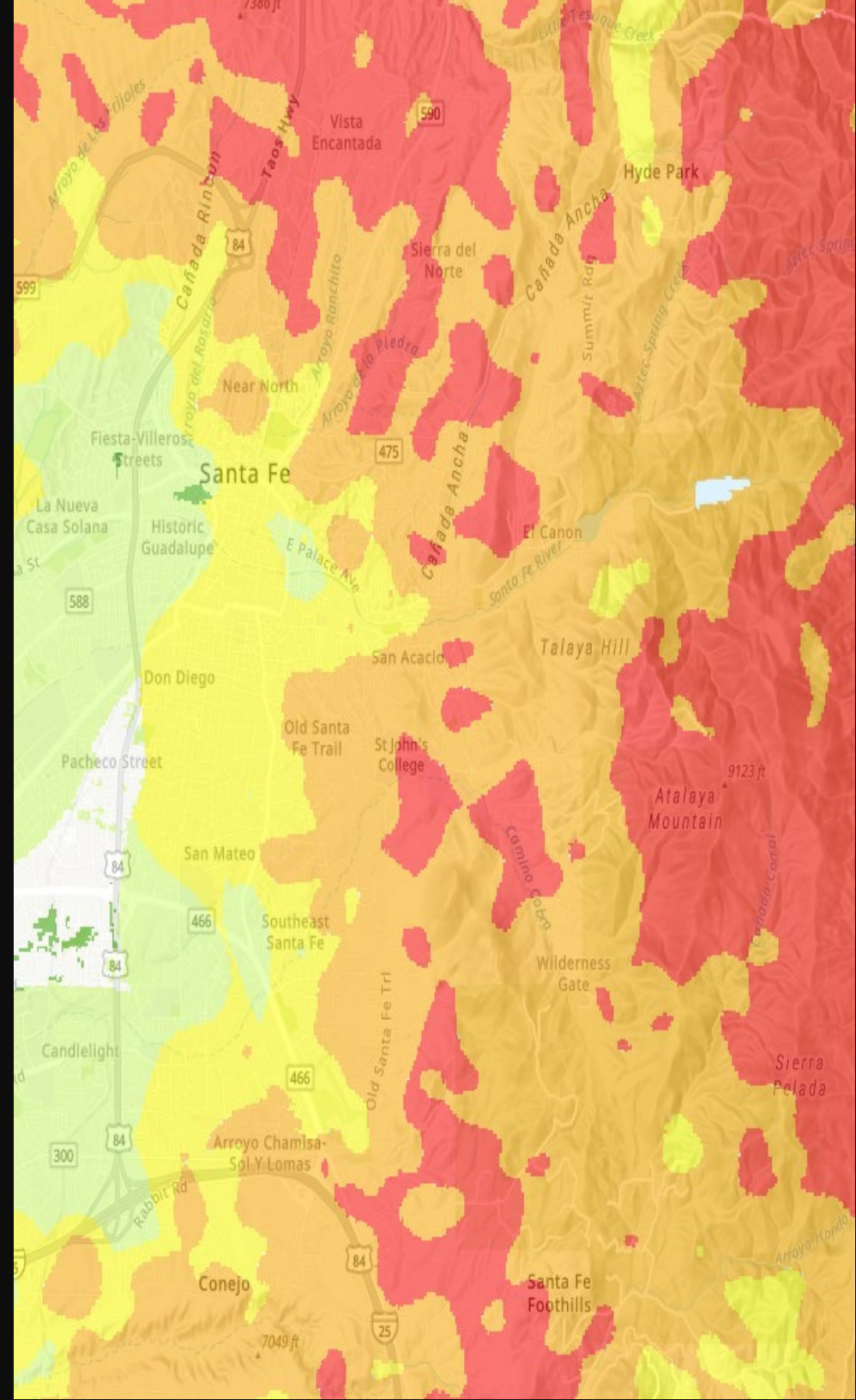
---

## Collaboration:

- OEM, SimTable, Santa Fe Fire Department, Santa Fe Police Department

## Data Sources:

- Wildland Fire Hazard & Risk Assessment (2006)
  - Santa Fe County Community Wildfire Protection Plan (2020)
  - FEMA National Risk Index Dataset
  - USDA Wildfire Risk to Communities Dataset
  - American Community Survey Dataset
  - Open Street Map Datasets
  - Boots on the ground
- 



# Analysis

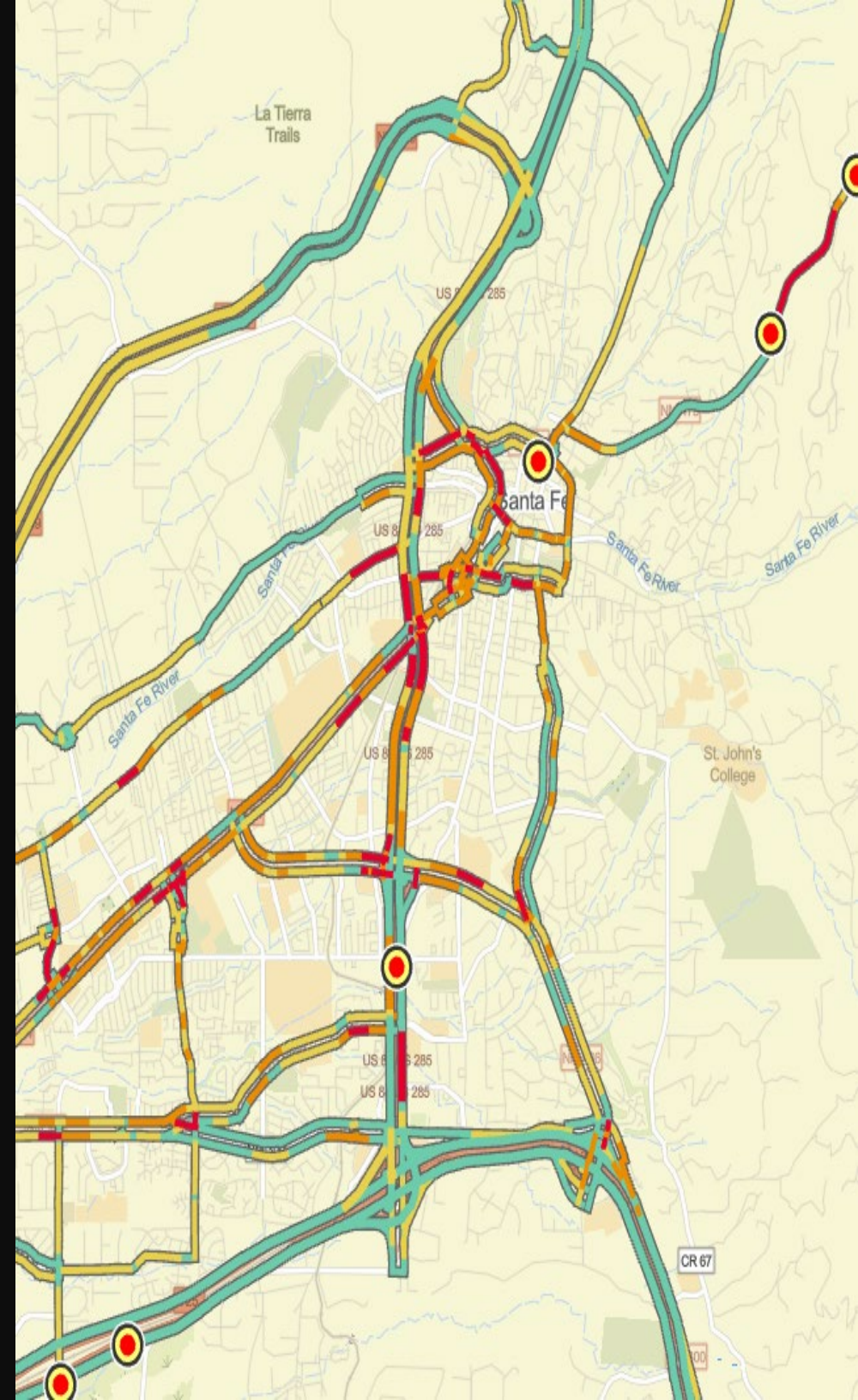
---

## Factors Considered:

- Wildfire Risk Levels
- Population Density
- Road Networks & Traffic Patterns

## Expertise:

- SimTable's Geospatial Analysis and Dynamic Modeling Capabilities have been utilized by CalFire, US Forest Service, BLM, DOE, and more.
- 

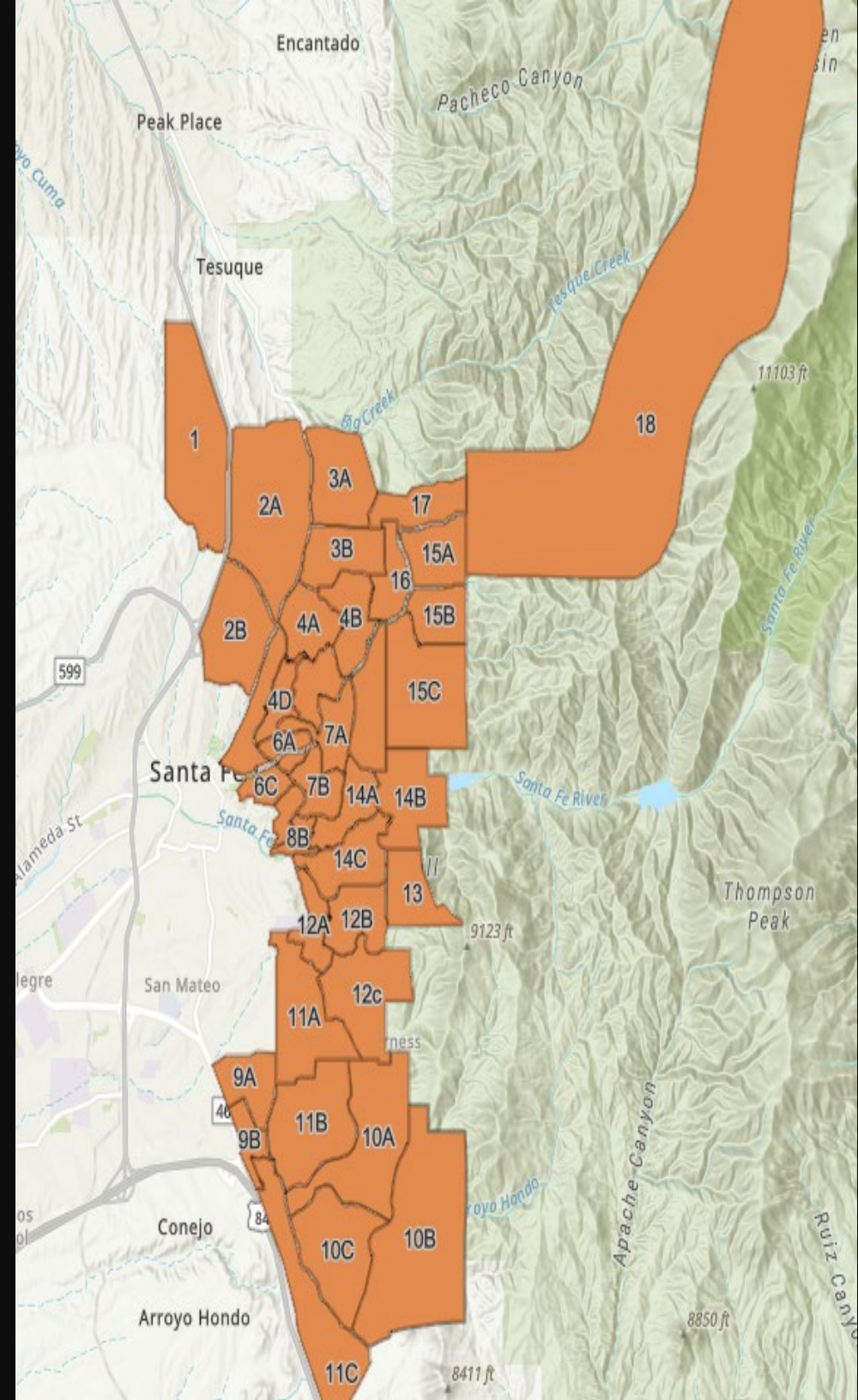


# Deliverables

---

## Zones Developed by SimTable

- Unique zones in Santa Fe's WUI
- Defined High-Risk Areas
- Topography and population-based catchments





Search for address to find your zone

Be prepared and know your zone

Find what pre-established wildfire evacuation zone you are in by using one of the following search methods:

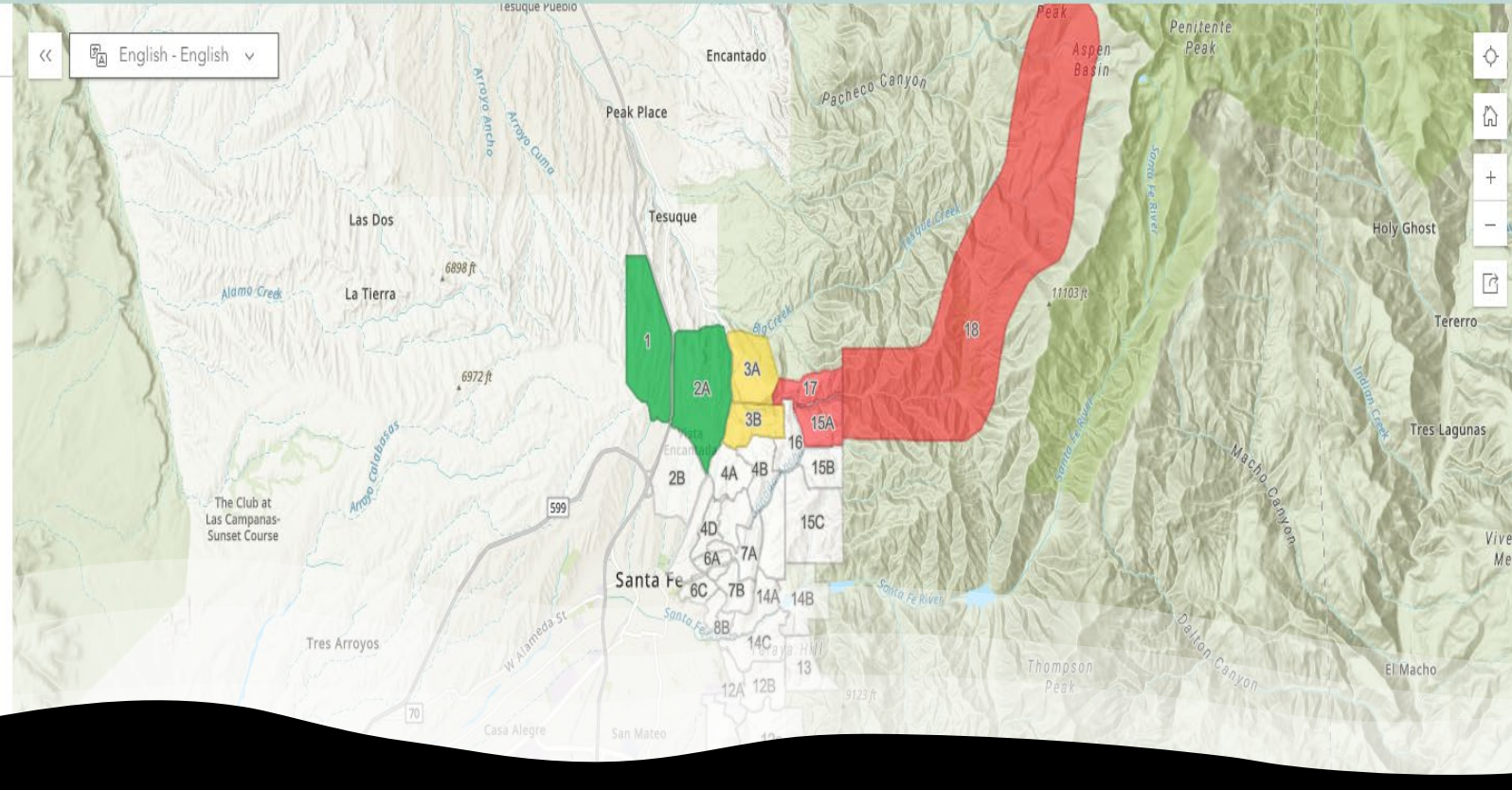
- Click the search box and type in an address or choose **Use current location**
- Click within the map

Note that the evacuation zones displayed here are hazard-specific to high risk wildland fire areas, and as such do not cover all land within City limits. **The City of Santa Fe Office of Emergency Management maintains capabilities to create new zones as needed for any hazard.**

More Information:

- [City of Santa Fe Office of Emergency Management](#)
- [City of Santa Fe Fire Department - Wildland Fire Division](#)

Please contact [oem@santafenm.gov](mailto:oem@santafenm.gov) if you would like a printable map for reference purposes.



# Application Development

## Implementation

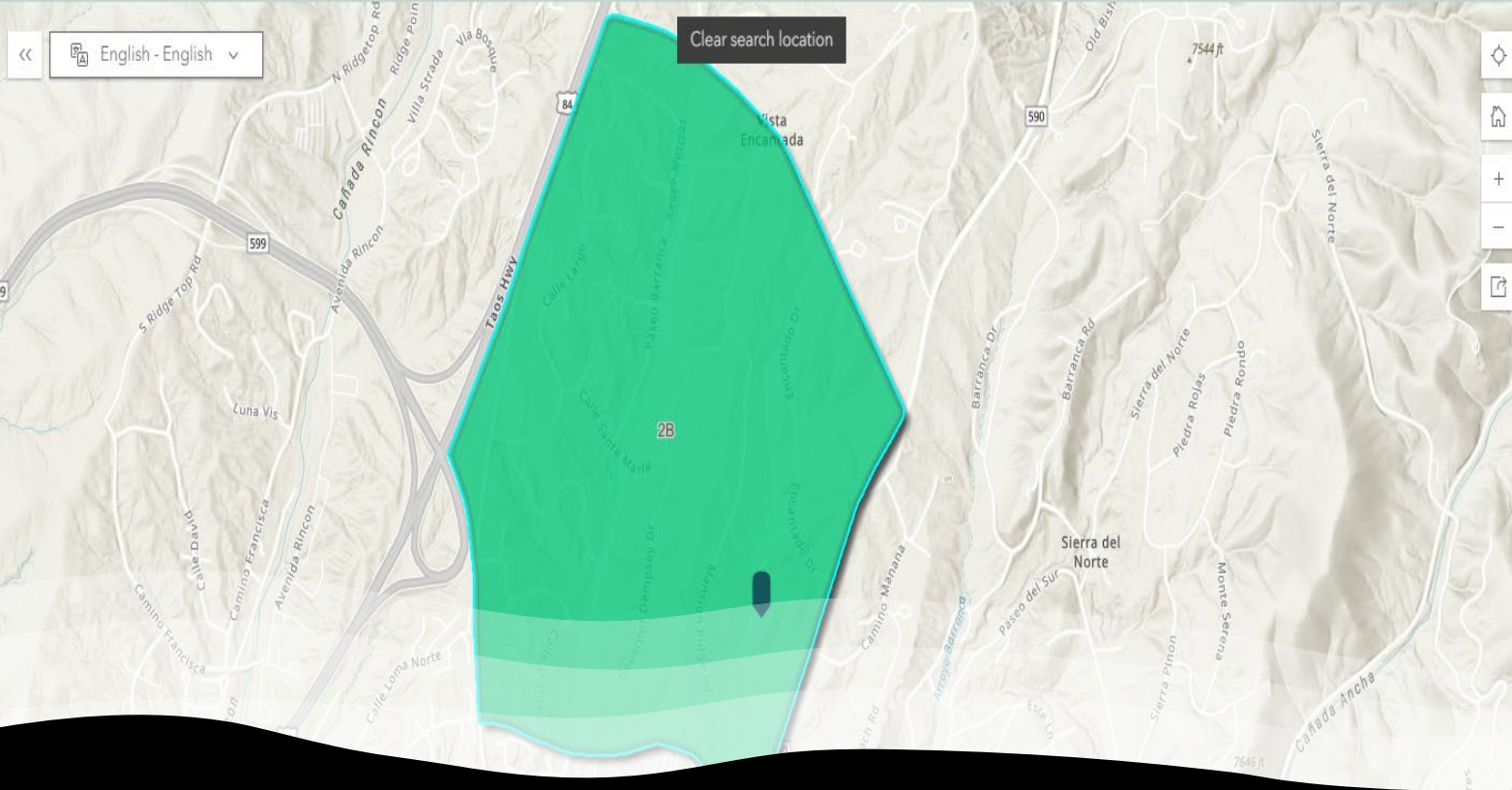
- ArcGIS “Know Your Zone” Web Application

## Features

- Interactive zone identification by clicking or address input
- Real-time evacuation status updates



Vista Encantada, Santa Fe, New Mexico X



### ZONE 2B: NORTH GOVERNORS MANSION

**READY**

Be aware, prepare, and stay informed. This is the time to prepare and be ready to evacuate. Older adults, people with special needs, or mobile property owners should take action early. Consider moving pets and livestock early.

Sé precavido, prepárate y mantente informado. Este es el momento para prepararse y estar listo en caso de evacuación. Los adultos mayores, las personas con necesidades especiales o los propietarios de viviendas móviles deben actuar con anticipación. Considera la posibilidad de trasladar a las mascotas y el ganado con anticipación.

# Dynamic Functionality

## Real-Time Updates

- Continuous Information
- Prevents misinformation and version control issues

## Integration with Text Alerts

- Text evacuation orders will link to application
- Ensures timely information delivery

# Accessibility

---

## Language Support

- Fully functional in English and Spanish

## User-Friendly Design

- Easy navigation and usage for all residents
  - Functional on desktop, tablet, and smart phones
- 



## Conoce tu zona - Ciudad de Santa Fe

Buscar la dirección para encontrar tu zona



Prepárate y conoce tu zona



Averigua en qué zona de evacuación de incendios forestales preestablecida te encuentras utilizando uno de los siguientes métodos de búsqueda:

- Haz clic en el campo de búsqueda y escribe una dirección o elige "Utilizar la ubicación actual "
- Haz clic dentro del mapa

Ten en cuenta que las zonas de evacuación que se muestran aquí son específicas para zonas de alto riesgo de incendios forestales, y como tales no cubren todo el terreno dentro de los límites de la Ciudad. La Oficina de Administración de Emergencias de la Ciudad de Santa Fe tiene la capacidad de crear nuevas zonas según sea necesario para cualquier tipo de riesgo.

Usar mi ubicación actual 

---

# Benefits and Impact

---

## Preparedness

- Enhances community safety
- Informs residents promptly during an emergency

## Flexibility

- Provides real-time information in evolving situations
- Supports informed decision-making

# Conclusion

---

## Know your Zone!

- <https://arcg.is/0rnW000>

## Call to Action

- Encourage WUI residents to familiarize themselves with their zone.
- 





Crime Data

01-01-24 to 04-30-24

Base Occurrences

2024	Jan	Feb	Mar	Apr	May	Jun	Jul	Aug	Sep	Oct	Nov	Dec	Total
Homicide Offenses	0	0	0	0									0
Robbery	10	5	2	5									22
Motor Vehicle Theft	48	64	52	48									212
Arson	0	0	2	5									7
Sex Offenses, Forcible	8	9	2	8									27
Burglary/Breaking & Entering	59	58	71	54									242
Larceny/Theft Offenses	218	215	198	271									902
Assault Offenses	136	131	143	126									536

\*\*Above 2024 overall Monthly Average

	Prior Month Changes		
	MARCH	APRIL	Changes
Homicide Offenses	0	0	0.00%
Robbery	2	5	150.00%
Motor Vehicle Theft	52	48	-7.69%
Arson	2	5	200.00%
Sex Offenses, Forcible	2	8	300.00%
Burglary/Breaking & Entering	71	54	-23.94%
Larceny/Theft Offenses	198	271	36.87%
Assault Offenses	143	126	-11.89%

YTD - Year to Year Changes		
2023	2024	Changes
3	0	0.00%
20	22	10.00%
249	212	-14.86%
18	7	-61.11%
27	27	0.00%
328	242	-26.22%
945	902	-4.55%
502	536	6.77%

RESPONSE TIMES - Monthly Changes			
Median Time - Call Start to Dispatch			
	MARCH	APRIL	Changes
Priority 1	0:16:07	0:15:55	-1.24%
Priority 2	0:29:27	0:30:55	4.98%
Priority 3	0:33:10	0:36:50	11.06%

RESPONSE TIMES - Monthly Changes			
Median Time - Dispatch to Arrival			
	MARCH	APRIL	Changes
Priority 1	0:06:52	0:07:01	2.18%
Priority 2	0:08:58	0:07:00	-21.93%
Priority 3	0:06:57	0:07:48	12.23%

2023	2024	Changes
2092	1948	-6.88%

Overall Total

\*\*denotes an increase

CALLS FOR SERVICE			
Monthly Changes			
	MARCH	APRIL	Changes
Dispatched	4770	4803	0.69%
Self Initiated	1995	1639	-17.84%
Total	6765	6442	-4.77%



# City of Santa Fe, New Mexico

2511 Camino Entrada, P.O. Box 909, Santa Fe, N.M. 87504-0909

---

## MUNICIPAL COURT

*Honorable Chad D. Chittum*

*Santa Fe Municipal Court Judge*

*Phone: (505) 955-5070 Fax: (505) 955-5159*

## *Memo*

To: Mayor and City Councilors  
City Attorney Erin McSherry  
City Manager John Blair  
Public Safety Committee Katherine Christner

From: Honorable Chad D. Chittum  
Santa Fe Municipal Court Judge

Date: 5/14/2024

Re: Municipal Court Monthly Report: April 2024

---

Enclosed please find the April 2024 monthly report.

We have also included the statistics for the last 6 months.

---

MUNICIPAL COURT MONTHLY STATISTICS REPORT FOR April 2024		April 2024	March 2024	February 2024	January 2024	December 2023	November 2023
<b>1. NUMBER OF CASES FILED FOR MONTH</b>	<b>TOTAL</b>	<b>TOTAL</b>	<b>TOTAL</b>	<b>TOTAL</b>	<b>TOTAL</b>	<b>TOTAL</b>	<b>TOTAL</b>
<b>Traffic Violations</b>	423	422	400	358	341	455	
Traffic Citations (court appearance)	353	377	348	322	279	412	
Penalty Assessments (court collects money)	70	45	52	36	62	43	
Cell phone violation 12-6-12.18(6)	16	19	12	12	2	13	
<b>Criminal Cases</b>	85	91	68	86	85	65	
DUIs	23	14	13	19	24	12	
Shoplifting	18	17	11	20	12	12	
Petty Misdemeanors	41	52	37	40	45	38	
Revoked	3	8	7	7	4	3	
<b>Code Enforcement</b>	2	1	2	0	0	0	
<b>Animal Control</b>	3	1	0	0	0	0	
<b>2. ARRAIGNMENTS</b> (many arraignments result in pleas)							
<b>Traffic Arraignments</b>	375	266	284	277	303	262	
Appearance plea form - Non Jailable	126	125	123	162	216	184	
Jailable Traffic - hearing with Judge	249	141	161	115	87	78	
<b>Criminal arraignments</b>	85	63	64	83	75	76	
DUIs	22	13	9	20	20	11	
Shoplifting	22	9	17	15	10	17	
Petty Misdemeanors	38	31	34	43	40	43	
Revoked	3	10	4	5	5	5	
<b>Animal</b>	1	0	0	0	0	0	
<b>Code Enforcement</b>	0	0	0	0	0	0	
<b>3. PLEAS</b>	77	79	99	121	72	99	
1) with attorney(s)	38	28	59	40	40	46	
2) with police officers	39	51	40	81	32	53	
1) Animal	0	0	2	0	0	2	
2) Traffic	53	66	59	95	40	66	
3) Misdemeanor/shoplifting	5	6	17	4	22	19	
4) Code Enforcement	0	0	0	1	0	0	
5) DUI	13	6	16	15	10	11	
6) Revoked	6	1	5	6	0	1	
<b>4. TRIALS</b>	2	3	2	5	2	2	
1) with attorney(s)	2	1	1	2	1	2	
2) with police officers	0	2	1	3	1	0	
1) Animal	0	0	0	0	0	0	
2) Traffic	1	3	1	3	1	0	
3) Misdemeanor/shoplifting	0	0	0	0	0	0	
4) Code Enforcement	0	0	0	0	0	0	
5) DUI	1	0	1	2	1	2	
6) Revoked	0	0	0	0	0	0	
<b>5. BENCH WARRANTS ISSUED</b>	202	186	199	259	163	235	
<b>6. COMMUNITY SERVICE – TOTAL</b>	277	288	228	230	152	301	
1) Community service hours – penalties	232	288	228	230	152	285	
2) Community service hours – in lieu of fines	45	0	0	0	0	16	
<b>7. DUI/DRUG COURT</b>							
1) Participants	7	7	6	7	8	9	
2) Graduates	0	0	1	1	3	0	
<b>8. OUTREACH COURT</b>							
1) Referrals	0	0	0	1	0	0	
2) Acceptance	0	0	0	1	0	0	
3) Graduates	0	0	1	0	0	0	

**MUNICIPAL COURT FINES AND FEES DISTRIBUTION REPORT**

April 2024

Animal Control	11001.451200	\$0.00
Court Fines	11001.450200	\$5,922.00
Parking	51150.450610	\$0.00
Traffic Violations	11001.450900	\$155.00
	<b>TOTAL FINES:</b>	<b>\$6,077.00</b>

City	AOC	JEC
\$0.00		
\$5,922.00		
\$0.00		
\$155.00		
	\$ 1,776.00	
\$ 800.00		
\$ 6,019.00		
\$ 36.50		
\$ 5,814.65		
\$ 2,907.35		
\$ 2,974.00		
\$ 1,345.00	\$ 1,345.00	
\$ 1,524.00		\$ -
\$ 482.00		
\$ 592.00		
\$ 888.00		\$ 888.00
\$ 1,489.00		
\$ 1,283.00	\$ 1,283.00	
\$ -	\$ -	
\$32,231.50	\$4,404.00	\$888.00

Automation Fee (AOC)	21202.432100	\$ 1,776.00
Bench Warrants (City)	21224.432150	\$ 800.00
Calming Fees (City)	31775.450850	\$ 6,019.00
Copies/Misc. (City)	11001.471400	\$ 36.50
Corrections Fees (City) - PD	21201.432300	\$ 5,814.65
Corrections Fees (City) - Muni. Court	21225.432300	\$ 2,907.35
Court Admin. Fee (City)	21225.432310	\$ 2,974.00
DWI Lab Fees (AOC)	21202.432200	\$ 1,345.00
Muni. Court DWI (Screening & Tracking Fee) (Old line item - 21228.432000)	11001.432000	\$ 1,524.00
Home Detention (City) (Old line item 21225.43213)	21201.432130	\$ 482.00
In House Automation (City)	21130.432100	\$ 592.00
Judicial Education Fees (JEC)	21202.431800	\$ 888.00
Police Safety Fees (City)	21224.432120	\$ 1,489.00
Prevention Fees (AOC)	21202.450400	\$ 1,283.00
Substance Abuse Fee (AOC)	21202.432350	\$ -
	<b>TOTAL FEES:</b>	<b>\$ 27,930.50</b>

**TOTAL FINES AND FEES: \$34,007.50**

**City: Money remains with the City of Santa Fe: \$32,231.50**

**AOC: Money is submitted to the State of NM, Admin. Office of the Courts: \$4,404.00**

**JEC: Money is submitted to the NM Judicial Education Center: \$888.00**