



Agenda

Notice of the Early Neighborhood Notification (ENN)

July 1, 2025 at 5:30 PM

Fort Marcy Park
490 Bishop's Lodge Rd.
Santa Fe, NM
87501

Procedures for Early Neighborhood Notification (ENN) Meeting

1. ENN Name

- a. Fort Marcy Park Improvements

2. Project Address

- a. 490 Bishop's Lodge Rd. Santa Fe, NM 87501

3. Description

- a. Improvements to Ft. Marcy Park, the project is being planned and designed by Molzen Corbin & Associates (MCA) - an architecture and engineering design firm contracted by the City's Public Works Department.

The City of Santa Fe requires an Early Neighborhood Notification (ENN) meeting be conducted for the city's capital infrastructure projects. It is intended to provide opportunity for the community for review, comment, and provide significant feedback on the city's capital infrastructure projects before plans become too firm to respond meaningfully to community's concerns.

4. Staff

- a. Scott Overlie, Project Manager III; saoverlie@santafenm.gov

5. Meeting Location

- a. Fort Marcy Park
(Magers Field at Gazebos near playground)
490 Bishop's Lodge Rd.
Santa Fe, NM
87501

Persons with disabilities in need of accommodations, contact the City Clerk's office at 955-6521, five (5) working days prior to meeting date.



City of Santa Fe, New Mexico

200 Lincoln Avenue, P.O. Box 909, Santa Fe, N.M. 87504-0909
www.santafenm.gov

Alan Webber, Mayor

Councilors:

Signe I. Lindell, Mayor Pro Tem, District 1
Alma G. Castro, District 1
Michael J. Garcia, District 2
Carol Romero-Wirth, District 2
Lee Garcia, District 3
Pilar F.H. Faulkner, District 3
Jamie Cassutt, District 4
Amanda Chavez, District 4

EARLY NEIGHBORHOOD NOTIFICATION MEETING

June 12, 2025

Dear Neighbor:

The City of Santa Fe is embarking on improvements at Ft. Marcy Park. The project is being planned & designed by Molzen Corbin & Associates (MCA) – an architecture & engineering design firm contracted by the City's Public Works Department.

The City of Santa Fe requires an Early Neighborhood Notification (ENN) meeting be conducted for city's capital infrastructure projects. It is intended to provide opportunity for the community to review, comment, and provide significant feedback on city's capital infrastructure projects before plans become too firm to respond meaningfully to community's concerns. In this regard, we wish to inform you that a meeting, is scheduled for:

Time: 5:30-7:00 pm

When: Tuesday, July 1, 2025

Where: Ft. Marcy Park, MagersField at the Gazebos near the playground, 490 Bishop's Lodge Rd., SF, NM 87501

In the event that one cannot attend this meeting, a person may submit written public comments or questions in advance of the meeting by email (jalford@molzencorbin.com or saoverlie@santafenm.gov), or by U.S. Postal Service (Molzen Corbin & Associates, ATTN: Jeremy Alford, Registered Architect, 2701 Miles Road SE, Albuquerque, NM 87106). Please include your **full name and address**. To be included in the official record and considered at the meeting, written public comment **must** be received no later than Friday, June 27, 2025.

Attached please find a vicinity map of the project site. The presentation material will be uploaded at least three (3) days prior to the meeting at City of Santa Fe's Calendar of Events website (<https://www.santafenm.gov/events>). If you have any questions or comments, please contact Scott Overlie by email at saoverlie@santafenm.gov or by phone (505) 231-6194.

Sincerely,

Scott Overlie, Project Manager III

City of Santa Fe Parks & Open Space Division
1142 Siler Road, Bldg. C
Santa Fe, NM 87505
505-231-6194

Attachments:

[Vicinity Map](#)



City of Santa Fe, New Mexico

200 Lincoln Avenue, P.O. Box 909, Santa Fe, N.M. 87504-0909
www.santafenm.gov

Alan Webber, Mayor

Councilors:

Signe I. Lindell, Mayor Pro Tem, District 1
Alma G. Castro, District 1
Michael J. Garcia, District 2
Carol Romero-Wirth, District 2
Lee Garcia, District 3
Pilar F.H. Faulkner, District 3
Jamie Cassutt, District 4
Amanda Chavez, District 4

REUNIÓN DE NOTIFICACIÓN TEMPRANA DEL VECINDARIO

5 de junio de 2025

Estimado Vecino:

La Ciudad de Santa Fe está llevando a cabo mejoras en el Parque Ft. Marcy. El proyecto está siendo planificado y diseñado por Molzen Corbin & Associates (MCA), una firma de diseño de arquitectura e ingeniería contratada por el Departamento de Obras Públicas de la Ciudad.

La Ciudad de Santa Fe requiere que una reunión de Notificación Temprana del Vecindario (ENN) para los proyectos de infraestructura de capital de la ciudad. La intención es brindar una oportunidad para que la comunidad revise, comente y brinde comentarios significativos sobre los proyectos de infraestructura de capital de la ciudad antes de que los planes se vuelvan demasiado firmes para responder de manera significativa a las preocupaciones de la comunidad. En este sentido, deseamos informarle que se ha programado una reunión para:

Hora: 5:30-7:00 pm

Cuándo: Martes, 1 de julio de 2025

Dónde: Parque Ft. Marcy, Magers Field en los Gazebos cerca del área de juegos, 490 Bishop's Lodge Rd., SF, NM 87501

- En caso de que no pueda asistir a esta reunión, se puede enviar comentarios públicos o preguntas por correo electrónico o por correo antes de la reunión a (jalford@molzencorbin.com o saoverlie@santafenm.gov), o por el Servicio Postal de EE. UU a: (Molzen Corbin & Associates, ATTN: Jeremy Alford, Arquitecto Registrado, 2701 Miles Road SE, Albuquerque, NM 87106). Por favor incluya su nombre completo y su dirección. Para que se incluya en el registro oficial y se considere en la reunión, los comentarios públicos deben ser recibidos a más tarde del viernes 27 de junio de 2025.

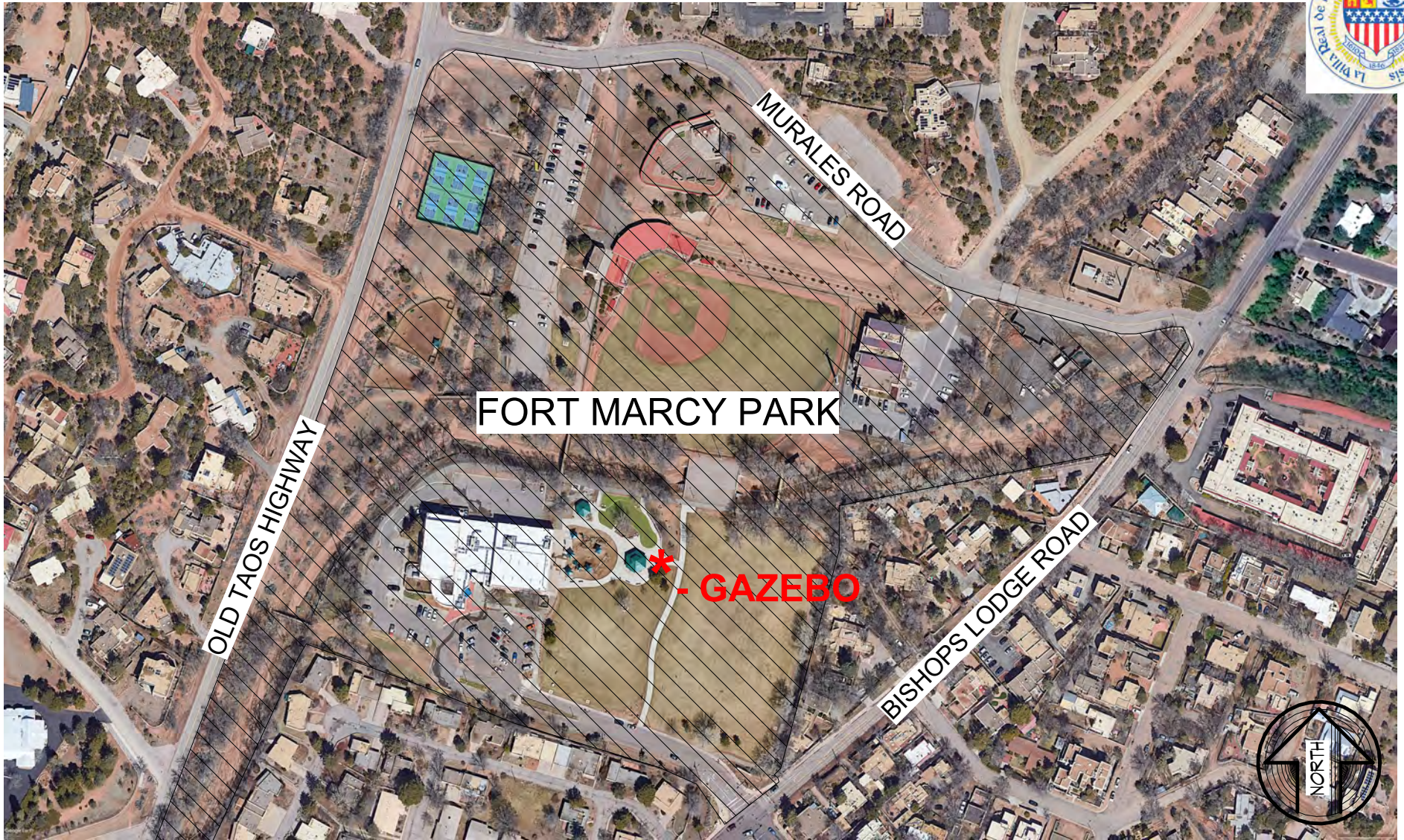
Adjunto encontrará un mapa de la vecindad del sitio del proyecto. El material de presentación se subirá al menos tres (3) días antes de la reunión en el sitio web del Calendario de Eventos de la Ciudad de Santa Fe (<https://www.santafenm.gov/events>). Si tiene alguna pregunta o comentario, comuníquese con Scott Overlie por correo electrónico a saoverlie@santafenm.gov o por teléfono (505) 231-6194.

Atentamente,

Scott Overlie, Gerente de proyecto III ciudad de Santa Fe División de Parques y Espacios Abiertos
1142 Siler Road, Bldg. C
505-231-6194

Adjutos:

Mapa de Vecindario



MOLZENCORBIN

Fort Marcy Improvements
Santa Fe
New Mexico
VICINITY MAP