

TOWER SURVEY

827314

SANTA FE COUNTRY CLUB

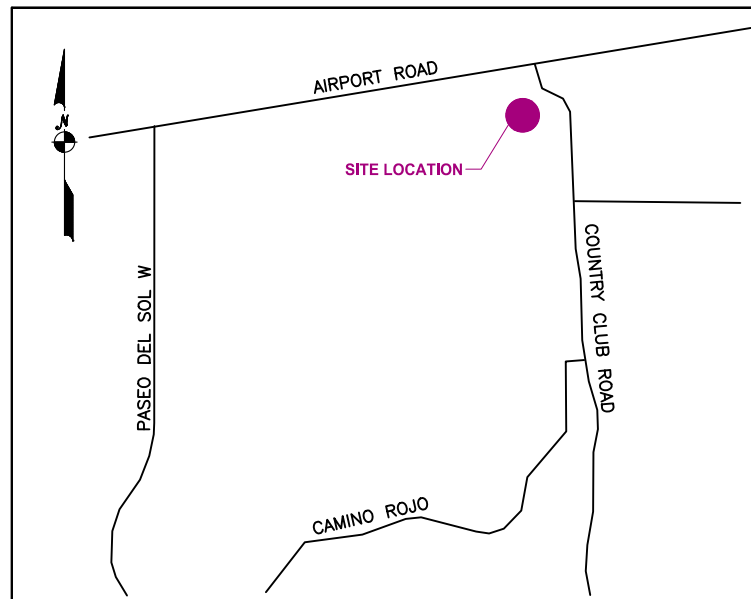
3950 COUNTRY CLUB ROAD
SANTA FE, NM 87592
SANTA FE COUNTY

LEGEND

Additional Land Building	IP / Rebar Monu	Transformer (Aerial)
Asphalt Pavement	IP / Rebar Monu - Found	Transformer Pad
Contour - Major	Cased Monu	Catch Basin
Contour - Minor	Cased Monu - Found	Inlet
Easement	Traverse Point	Culvert
Guiderail	Survey Point	Utility Vault
Jurisdiction Line	Gravel	Manhole
Property Line	Dirt	Handhole
Property Tie	Concrete	Pull box
Parent Property	Retaining Wall	Pedestal
Tower Easement	Stairs	Riser
Right of Way	Door / Gate	Meter
Setback	Double Door / Gate	Valve
Treeline	Gate - Sliding	Cleanout
Wetland	Signs	Junction Box
Railroad Tracks	Mailbox	Pump Station
Centerline	Column	Utility Box
Road Centerline	Utility Pole	Controller
Stream	Guyed Pole	HVAC
Stream (Directional)	Pole	Generator
Ditch	Bollard	
Channel	Fire Hydrant	
Fence	Flag Pole	
Cable UG	Shrub	
Combined Sewer	Tree - Palm	
Cable TV & Elec	Tree - Coniferous	
Cable TV & Elec UG	Tree - Deciduous	
Cable, Elec, & Tele	Metal Platform	
Cable, Elec, & Tele UG	Fuel Tanks	
Electric	Traffic Signal Controller	
Electric UG		
Fiber		
Fiber UG		
Gas		
Sewer		
Storm		
Telephone		
Telephone UG		
Unknown Utility		
Water		
Topo - High Point		
Topo - Low Point		
Breakline		
Match line		
Property Tie		

VICINITY MAP

NOT TO SCALE



CONTENTS

COVER SHEET
PROPERTY OVERVIEW
ACCESS OVERVIEW
SITE OVERVIEW 1
SITE OVERVIEW 2
SITE OVERVIEW DETAIL
LEGAL DESCRIPTIONS

SURVEY PROCEDURES & EQUIPMENT

THE ACCURACY OF THIS SURVEY MEETS OR EXCEEDS THE MINIMUM STANDARDS AS REQUIRED BY [STATE REQUIREMENTS FOR BOUNDARY SURVEYS].
INSTRUMENTS USED:

- TOPCON GT500
- CARLSON BR6

COORDINATES

For internal use

LABEL	LAT, LONG
MON 1 / POC	35°38'00.55", -106°03'37.79"

AREA SUMMARY

AREA	SQ. FT.	ACRES
PARENT PARCEL	7,000,005	160.70
TOWER COMPOUND	536	0.01
TOWER LEASE	606	0.014
ACCESS & UTILITY EASEMENT	38806	0.89

ABBREVIATIONS

POC	POINT OF COMMENCEMENT
POB	POINT OF BEGINNING
ROW	RIGHT OF WAY

SURVEY PERFORMED FOR:



2000 Corporate Drive
Canonsburg, PA 15317

SURVEY COORDINATED BY:

GEOLINE SURVEYING, INC.
13430 NW 10th Terrace, Suite A, Alachua, FL 32615
Tele: (386) 418-0500 | Fax: (386) 462-9986

SURVEY PERFORMED BY:

JONATHAN MURPHY LAND SURVEYOR
4650 PARAGON PARK RD, RALEIGH, NC 27616
TELE: (919) 787-7873 | FAX: (919) 400-4442

DRAWN BY: EMC | CHK BY: AMB | JOB NO.: 827314

SURVEYOR'S CERTIFICATION:

I hereby certify to T-Mobile West Tower LLC, Crown Castle USA Inc., including its parents, subsidiaries and affiliated entities.
SURVEYOR NAME: JONATHAN MURPHY

PRELIMINARY

SIGNATURE
XX/XX/2023
DATE

ZONING:

N/A

FLOOD NOTE:

THIS PARCEL OF LAND LIES WITHIN FLOOD ZONE X WHICH IS NOT A SPECIAL FLOOD HAZARD AREA AS PER F.I.R.M. PANEL NUMBER: 35049C0393D, EFFECTIVE DATE: 06/17/2008

BEARING BASIS:

NM GRID (CENTRAL ZONE) NAD83

NOTES:

1. SURVEY PERFORMED ON 02/08/2023.
2. DATA PROJECTED IN STATE PLANE COORDINATE SYSTEM [NAD83], WITH [NAVD88] VERTICAL DATUM. EPSG CODE 2258
3. NO SUBSURFACE INVESTIGATION WAS PERFORMED TO LOCATE UNDERGROUND UTILITIES. UTILITIES SHOWN HEREON ARE LIMITED TO AND ARE PER OBSERVED EVIDENCE ONLY.
4. ALL VISIBLE TOWER EQUIPMENT AND IMPROVEMENTS ARE CONTAINED WITHIN THE DESCRIBED AREA, UNLESS OTHERWISE NOTED HEREON.
5. NOT ALL SYMBOLS ARE DEPICTED TO SCALE.
6. THIS SURVEY DOES NOT REPRESENT A BOUNDARY SURVEY OF THE PARENT PARCEL.

REV	DATE	DESCRIPTION	DRWN
1	XX/XX/XXXX	X	X
2	XX/XX/XXXX	X	X
3	XX/XX/XXXX	X	X

SITE INFORMATION:

Name	SANTA FE COUNTRY CLUB
BUN	827314
Address	3950 COUNTRY CLUB ROAD SANTA FE, NM 87592
County	SANTA FE COUNTY

SITE LOCATED IN:

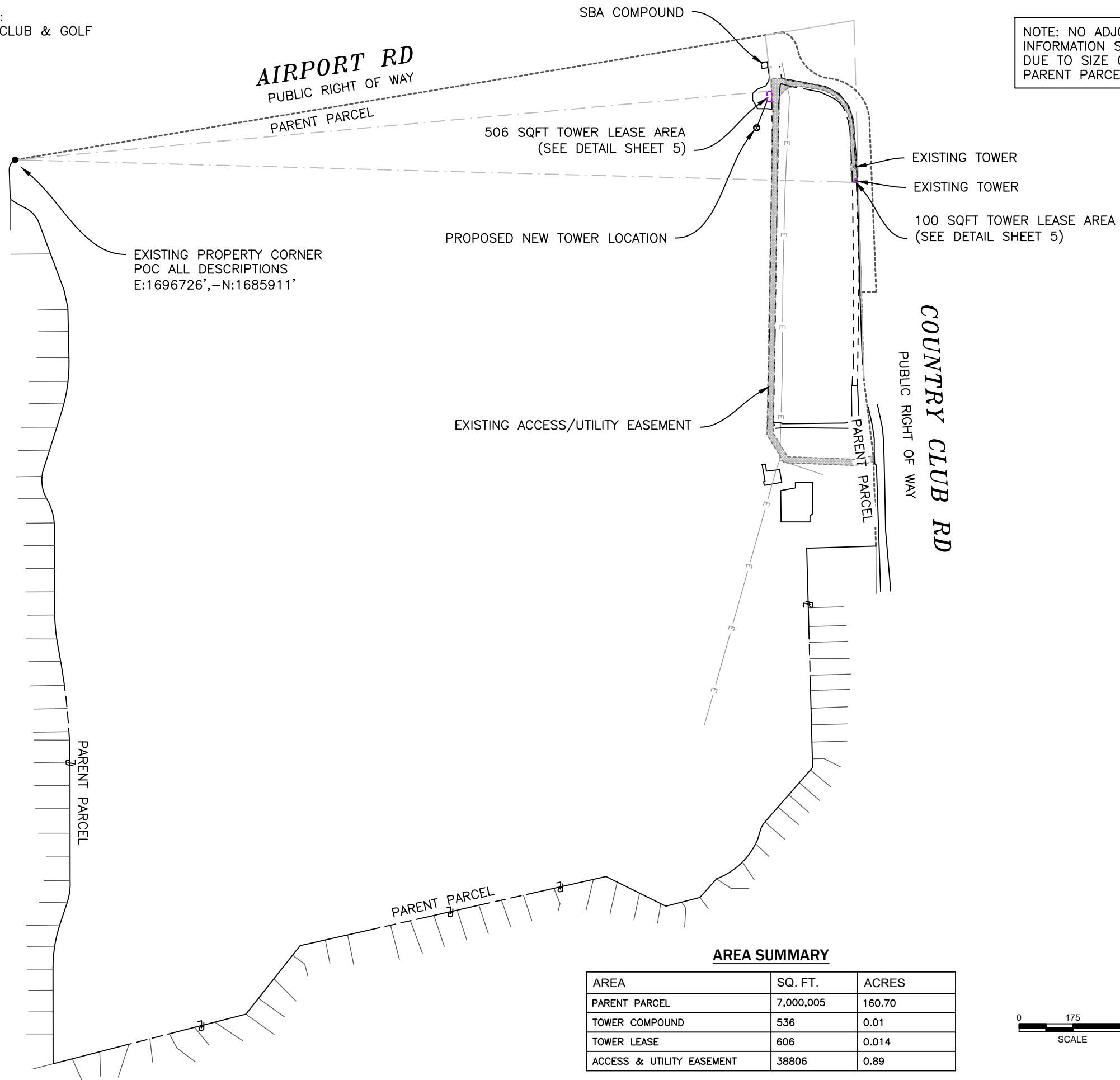
Section 12, Township 16N, Range 8E

TOWER SURVEY

SHEET: COVER SHEET

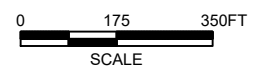
PARENT PARCEL INFORMATION:
 OWNER: SANTA FE COUNTRY CLUB & GOLF ASSOCIATION
 3950 COUNTRY CLUB RD
 SANTA FE NM 87592
 PID 54163584
 DOC 1675211

NOTE: NO ADJOINER INFORMATION SHOWN DUE TO SIZE OF PARENT PARCEL




AREA SUMMARY

AREA	SQ. FT.	ACRES
PARENT PARCEL	7,000,005	160.70
TOWER COMPOUND	536	0.01
TOWER LEASE	606	0.014
ACCESS & UTILITY EASEMENT	38806	0.89



SURVEY PERFORMED FOR:



2000 Corporate Drive
 Canonsburg, PA 15317

REV	DATE	DESCRIPTION	DRWN
1	xx/xx/xxxx	x	x
2	xx/xx/xxxx	x	x
3	xx/xx/xxxx	x	x

SITE INFORMATION:

Name	SANTA FE COUNTRY CLUB
BUN	827314
Address	3950 COUNTRY CLUB ROAD SANTA FE, NM 87592
County	SANTA FE COUNTY

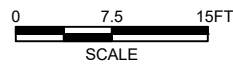
SITE LOCATED IN:
 Section 12, Township 16N, Range 8E

TOWER SURVEY

SHEET: PROPERTY OVERVIEW

EXISTING
SBA COMPOUND

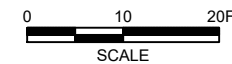
506 SQFT
TOWER LEASE AREA
(SEE NEXT SHEET)




PROPOSED
NEW TOWER
LOCATION

506 SQFT
TOWER LEASE AREA
(SEE NEXT SHEET)

91.5'



SURVEY PERFORMED FOR:



2000 Corporate Drive
Canonsburg, PA 15317

REV	DATE	DESCRIPTION	DRWN
1	XX/XX/XXXX	X	X
2	XX/XX/XXXX	X	X
3	XX/XX/XXXX	X	X

SITE INFORMATION:

Name	SANTA FE COUNTRY CLUB
BUN	827314
Address	3950 COUNTRY CLUB ROAD SANTA FE, NM 87592
County	SANTA FE COUNTY

SITE LOCATED IN:
Section 12, Township 16N, Range 8E

AS-BUILT SURVEY

SHEET: SITE OVERVIEW 1

506 SQFT TOWER LEASE AREA DETAIL

POC TIE
N84°47'39"E
2460.19'

506 SQFT AREA

POB 506 SQFT AREA
(PART OF TOWER LEASE)

15.00'
N90°00'00"E

20.00'
N00°00'00"E

13.75'
N00°00'00"E

N90°00'00"W
15.00'

S00°00'00"E
20.00'

S00°00'00"E
13.75'



EXISTING TOWERS DETAIL

EXISTING TOWER

WOOD WALL

100 SQFT
TOWER
AREA

10.00'
N88°14'06"E

N01°45'54"W
10.00'

POC TIE
S88°27'49"E
2735.15'

S88°14'06"W

10.00'
POB 100 SQFT AREA
(PART OF TOWER LEASE)

S01°45'54"E
10.00'



SURVEY PERFORMED FOR:

CROWN CASTLE 2000 Corporate Drive
Canonsburg, PA 15317

REV	DATE	DESCRIPTION	DRWN
1	XX/XX/XXXX	X	X
2	XX/XX/XXXX	X	X
3	XX/XX/XXXX	X	X

SITE INFORMATION:

Name	SANTA FE COUNTRY CLUB
BUN	827314
Address	3950 COUNTRY CLUB ROAD SANTA FE, NM 87592
County	SANTA FE COUNTY

SITE LOCATED IN:
Section 12, Township 16N, Range 8E

TOWER SURVEY


SHEET: SITE OVERVIEW

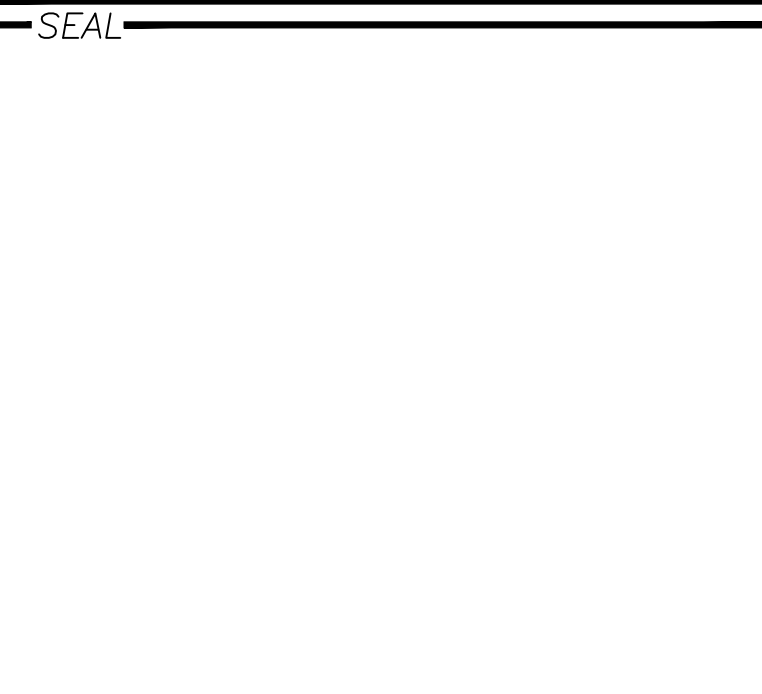
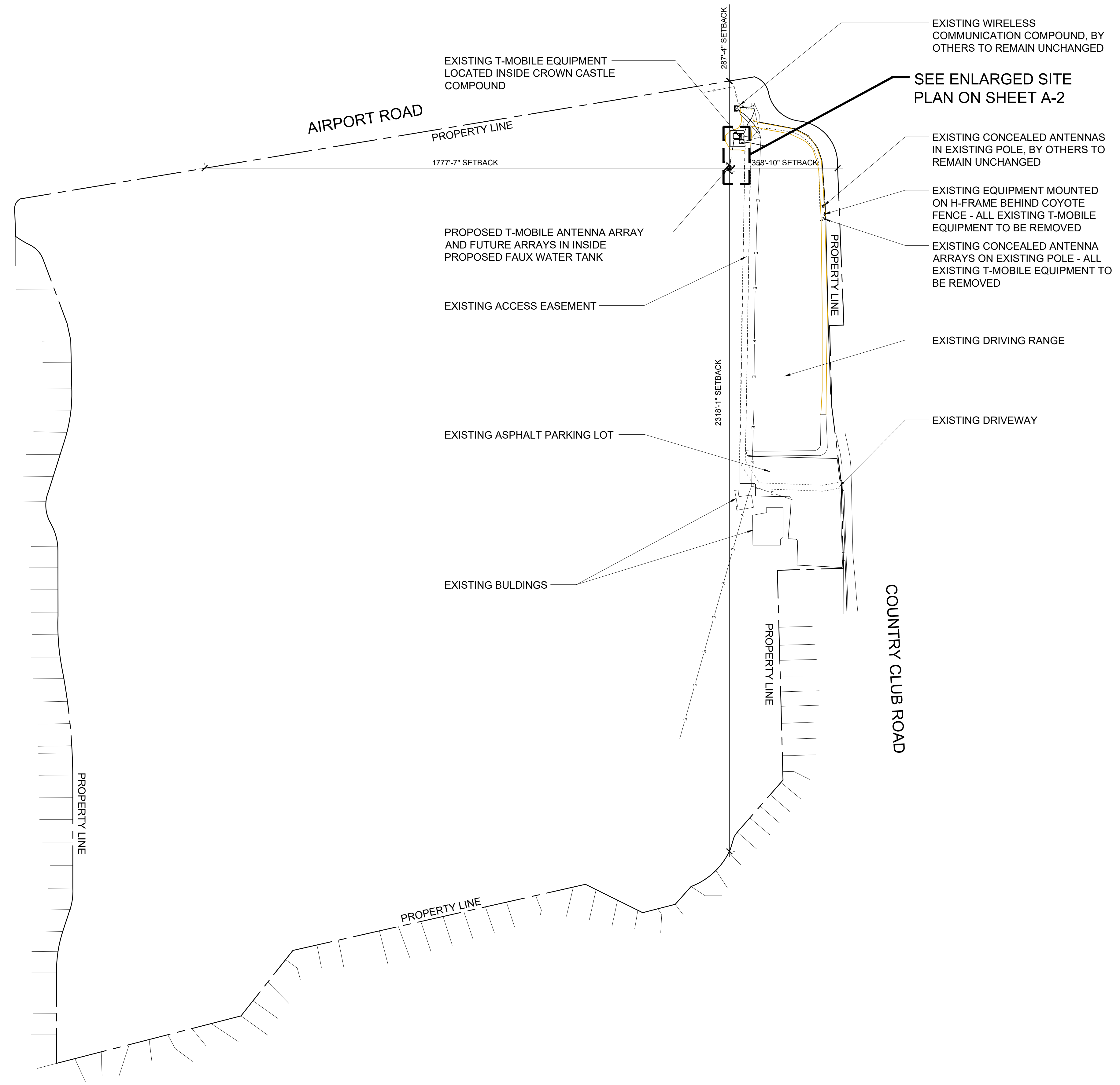
LEGAL DESCRIPTION: TOWER LEASE (CREATED BY THIS OFFICE)

A PORTION OF ALL THAT CERTAIN PARCEL OF LAND LYING IN THE TOWN OF SANTA FE, COUNTY OF SANTA FE, STATE OF NEW MEXICO, HAVING PARCEL ID: 54163584, FURTHER DESCRIBED AS:
COMMENCING FROM AN EXISTING PROPERTY CORNER, FOUND ON THE NORTHWEST CORNER OF SAID PARCEL, ALSO LYING ON THE SOUTHERN RIGHT OF WAY OF AIRPORT ROAD, AND HAVING NEW MEXICO STATE PLANE COORDINATES E:1696726',-N:1685911';
THENCE, N 84° 47' 39" E FOR A DISTANCE OF 2460.19 FEET TO THE POINT OF BEGINNING OF A 506 SQFT AREA;
THENCE, N 90° 00' 00" E FOR A DISTANCE OF 15.00 FEET TO A POINT;
THENCE, S 00° 00' 00" W FOR A DISTANCE OF 20.00 FEET TO A POINT;
THENCE, S 00° 00' 00" W FOR A DISTANCE OF 13.75 FEET TO A POINT;
THENCE, N 90° 00' 00" W FOR A DISTANCE OF 15.00 FEET TO A POINT;
THENCE, N 00° 00' 00" E FOR A DISTANCE OF 13.75 FEET TO A POINT;
THENCE, N 00° 00' 00" E FOR A DISTANCE OF 20.00 FEET TO THE POINT OF BEGINNING,
TOGETHER WITH AN AREA DESCRIBED AS FOLLOWS:
COMMENCING FROM AN EXISTING PROPERTY CORNER, FOUND ON THE NORTHWEST CORNER OF SAID PARCEL, ALSO LYING ON THE SOUTHERN RIGHT OF WAY OF AIRPORT ROAD, AND HAVING NEW MEXICO STATE PLANE COORDINATES E:1696726',-N:1685911';
THENCE, S 88° 27' 49" E FOR A DISTANCE OF 2735.15 FEET TO THE POINT OF BEGINNING OF A 100 SQFT AREA;
THENCE, N 01° 45' 54" W FOR A DISTANCE OF 10.00 FEET TO A POINT;
THENCE, N 88° 14' 06" E FOR A DISTANCE OF 10.00 FEET TO A POINT;
THENCE, S 01° 45' 54" E FOR A DISTANCE OF 10.00 FEET TO A POINT;
THENCE, S 88° 14' 06" W FOR A DISTANCE OF 10.00 FEET TO THE POINT OF BEGINNING.
THE TOTAL TOWER LEASE AREA INTENDING TO CONTAIN 606 SQFT -OR- 0.014 ACRES.

LEGAL DESCRIPTION: ACCESS/UTILITY EASEMENT (CREATED BY THIS OFFICE)

A PORTION OF ALL THAT CERTAIN PARCEL OF LAND LYING IN THE TOWN OF SANTA FE, COUNTY OF SANTA FE, STATE OF NEW MEXICO, HAVING PARCEL ID: 54163584, FURTHER DESCRIBED AS:
COMMENCING FROM AN EXISTING PROPERTY CORNER, FOUND ON THE NORTHWEST CORNER OF SAID PARCEL, ALSO LYING ON THE SOUTHERN RIGHT OF WAY OF AIRPORT ROAD, AND HAVING NEW MEXICO STATE PLANE COORDINATES E:1696726',-N:1685911';
THENCE, S 88° 27' 49" E FOR A DISTANCE OF 2735.15 FEET TO THE POINT OF BEGINNING;
THENCE, S 88° 18' 45" W FOR A DISTANCE OF 9.05 FEET TO A POINT;
THENCE, N 01° 17' 16" W FOR A DISTANCE OF 184.30 FEET TO THE BEGINNING OF A NON-TANGENTIAL CURVE, SAID CURVE TURNING TO THE LEFT THROUGH AN ANGLE OF 68° 59' 23.8", HAVING A RADIUS OF 131.23 FEET, AND WHOSE LONG CHORD BEARS N 37° 51' 36" W FOR A DISTANCE OF 148.64 FEET TO A POINT OF INTERSECTION WITH A NON-TANGENTIAL LINE.
THENCE, N 81° 08' 05" W FOR A DISTANCE OF 79.26 FEET TO THE BEGINNING OF A NON-TANGENTIAL CURVE, SAID CURVE TURNING TO THE LEFT THROUGH AN ANGLE OF 69° 02' 31.6", HAVING A RADIUS OF 62.96 FEET, AND WHOSE LONG CHORD BEARS S 58° 50' 38" W FOR A DISTANCE OF 71.36 FEET TO A POINT OF INTERSECTION WITH A NON-TANGENTIAL LINE.
THENCE, S 01° 08' 43" W FOR A DISTANCE OF 567.09 FEET TO A POINT;
THENCE, S 00° 56' 39" W FOR A DISTANCE OF 526.77 FEET TO A POINT;
THENCE, S 31° 15' 14" E FOR A DISTANCE OF 90.32 FEET TO A POINT;
THENCE, S 87° 47' 54" E FOR A DISTANCE OF 217.10 FEET TO A POINT;
THENCE, N 79° 26' 13" E FOR A DISTANCE OF 63.76 FEET TO A POINT LYING ON THE WESTERN RIGHT OF WAY OF COUNTRY CLUB ROAD, A DEDICATED PUBLIC RIGHT OF WAY;
THENCE, ALONG SAID RIGHT OF WAY, S 01° 34' 19" E FOR A DISTANCE OF 20.25 FEET TO A POINT;
THENCE, LEAVING SAID RIGHT OF WAY, S 79° 26' 13" W FOR A DISTANCE OF 62.83 FEET TO A POINT;
THENCE, N 87° 47' 54" W FOR A DISTANCE OF 230.10 FEET TO A POINT;
THENCE, N 31° 15' 14" W FOR A DISTANCE OF 106.84 FEET TO A POINT;
THENCE, N 00° 56' 39" E FOR A DISTANCE OF 532.58 FEET TO A POINT;
THENCE, N 01° 08' 43" E FOR A DISTANCE OF 552.90 FEET TO A POINT;
THENCE, N 90° 00' 00" W FOR A DISTANCE OF 5.06 FEET TO A POINT;
THENCE, N 00° 00' 00" E FOR A DISTANCE OF 13.75 FEET TO A POINT;
THENCE, N 00° 00' 00" E FOR A DISTANCE OF 20.00 FEET TO A POINT;
THENCE, N 00° 13' 22" W FOR A DISTANCE OF 42.73 FEET TO A POINT;
THENCE, N 89° 49' 40" E FOR A DISTANCE OF 23.02 FEET TO A POINT;
THENCE, S 79° 48' 25" E FOR A DISTANCE OF 144.47 FEET TO THE BEGINNING OF A NON-TANGENTIAL CURVE, SAID CURVE TURNING TO THE RIGHT THROUGH AN ANGLE OF 70° 22' 41.0", HAVING A RADIUS OF 143.23 FEET, AND WHOSE LONG CHORD BEARS S 38° 33' 08" E FOR A DISTANCE OF 165.08 FEET.
THENCE, S 03° 21' 49" E FOR A DISTANCE OF 130.70 FEET TO A POINT;
THENCE, S 88° 14' 06" W FOR A DISTANCE OF 10.00 FEET TO A POINT;
THENCE, S 01° 45' 54" E FOR A DISTANCE OF 10.00 FEET TO A POINT;
THENCE, N 88° 14' 06" E FOR A DISTANCE OF 10.00 FEET TO A POINT;
THENCE, S 04° 55' 32" E FOR A DISTANCE OF 34.04 FEET TO A POINT;
THENCE, S 88° 14' 06" W FOR A DISTANCE OF 10.00 FEET TO A POINT;
THENCE, S 01° 45' 54" E FOR A DISTANCE OF 10.00 FEET TO THE POINT OF BEGINNING, CONTAINING 38,806 SQFT -OR- 0.89 ACRES.

SURVEY PERFORMED FOR:			
		2000 Corporate Drive Canonsburg, PA 15317	
REV	DATE	DESCRIPTION	DRWN
1	xx/xx/xxxx	x	x
2	xx/xx/xxxx	x	x
3	xx/xx/xxxx	x	x
SITE INFORMATION:			
Name	SANTA FE COUNTRY CLUB		
BUN	827314		
Address	3950 COUNTRY CLUB ROAD SANTA FE, NM 87592		
County	SANTA FE COUNTY		
SITE LOCATED IN:			
Section 12, Township 16N, Range 8E			
TOWER SURVEY			
SHEET: LEGAL DESCRIPTION			



NO.	DATE	DESCRIPTION
A	4/4/23	REVIEW
B	4/28/23	REVIEW
C	9/12/24	REVIEW
D	4/21/25	REVIEW

ARCHITECTS JOB NO.
 YDC-10463

PROJECT INFORMATION
SANTA FE COUNTRY CLUB
 CROWN B.U.N. # 827314
 3950 COUNTRY CLUB ROAD
 SANTA FE, NM 87592

SHEET TITLE
SITE PLAN



SHEET NUMBER
A-1



SEAL

NO.	DATE	DESCRIPTION
A	4/4/23	REVIEW
B	4/28/23	REVIEW
C	9/12/24	REVIEW
D	4/21/25	REVIEW

ARCHITECTS JOB NO.
 YDC-10463

PROJECT INFORMATION

SANTA FE COUNTRY CLUB
 CROWN B.U.N. # 827314
 3950 COUNTRY CLUB ROAD
 SANTA FE, NM 87592

SHEET TITLE

ENLARGED SITE PLAN

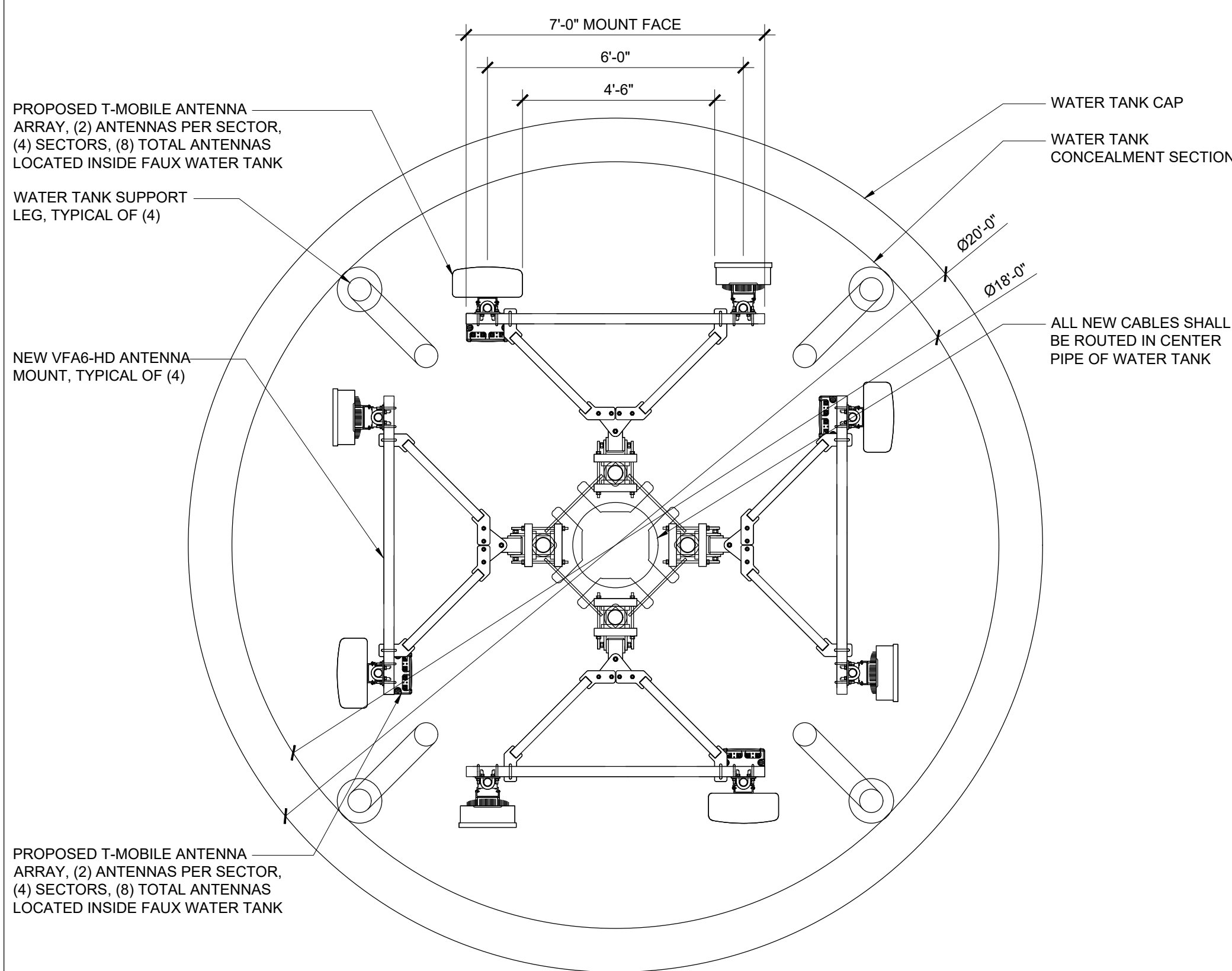
JURISDICTION APPROVAL

SHEET NUMBER

A-2

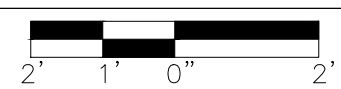
NOT USED

3



ANTENNA CONFIGURATION

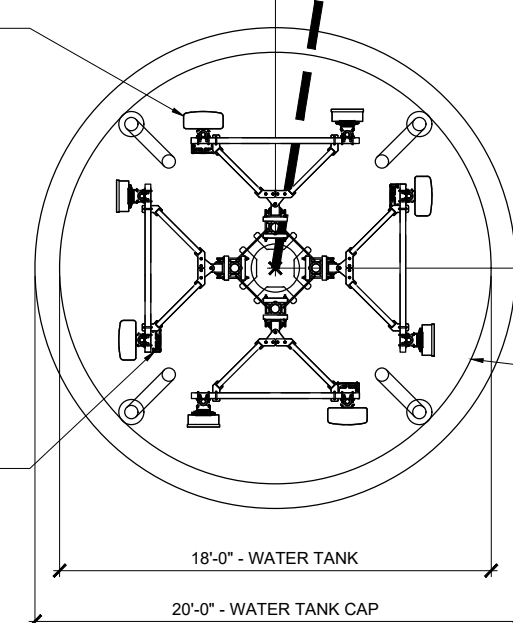
22"x34" SCALE: 3/8" = 1'-0"
 11"x17" SCALE: 3/16" = 1'-0"



2

PROPOSED T-MOBILE ANTENNA ARRAY, (2) ANTENNAS PER SECTOR, (4) SECTORS, (8) TOTAL ANTENNAS LOCATED INSIDE FAUX WATER TANK

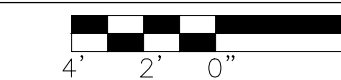
PROPOSED T-MOBILE RRHS, (2) RRHS PER SECTOR, (4) SECTORS, (8) TOTAL MOUNTED ON BACKSIDE OF ANTENNA, LOCATED INSIDE FAUX WATER TANK



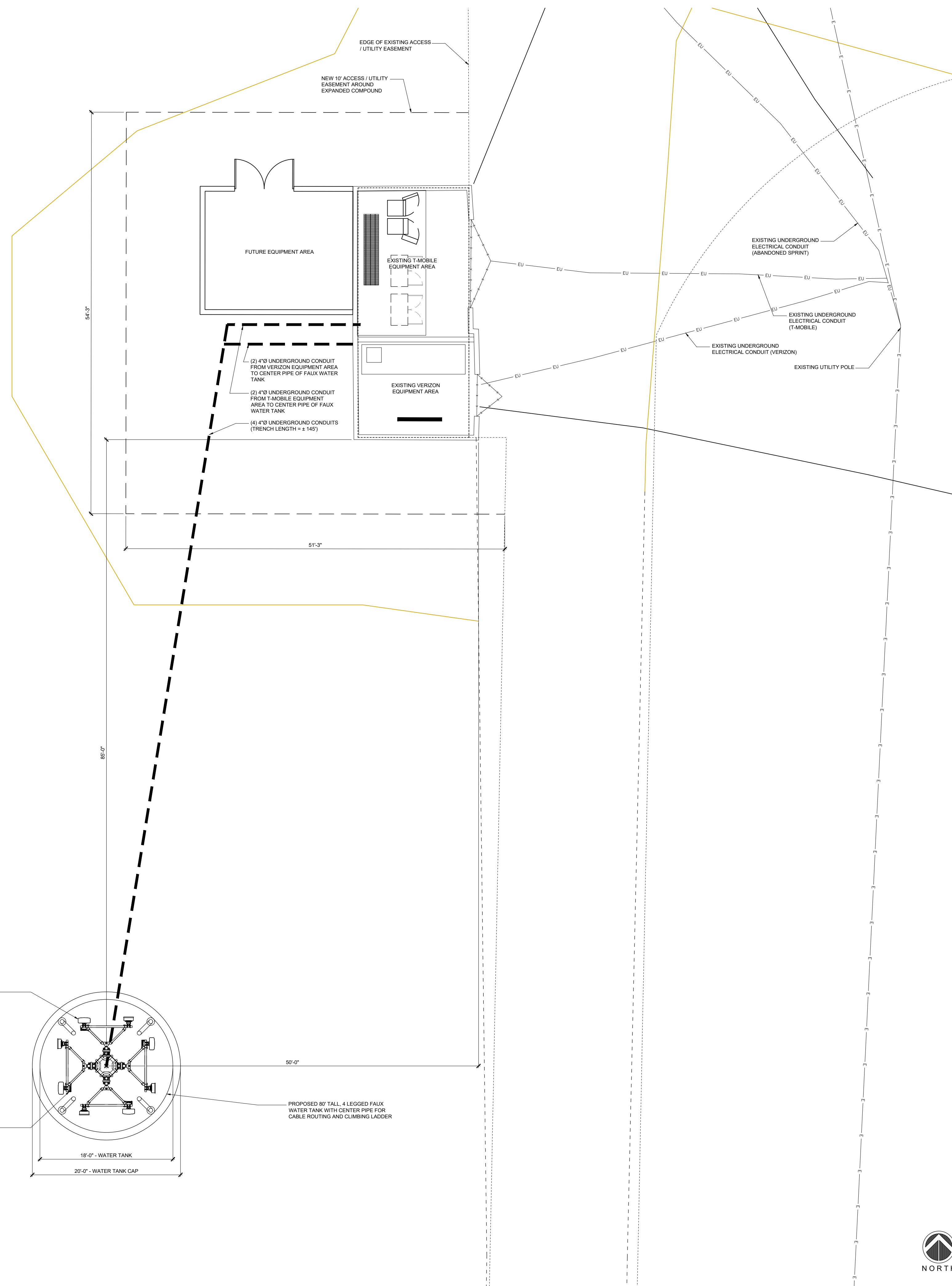
PROPOSED 80' TALL, 4 LEGGED FAUX WATER TANK WITH CENTER PIPE FOR CABLE ROUTING AND CLIMBING LADDER

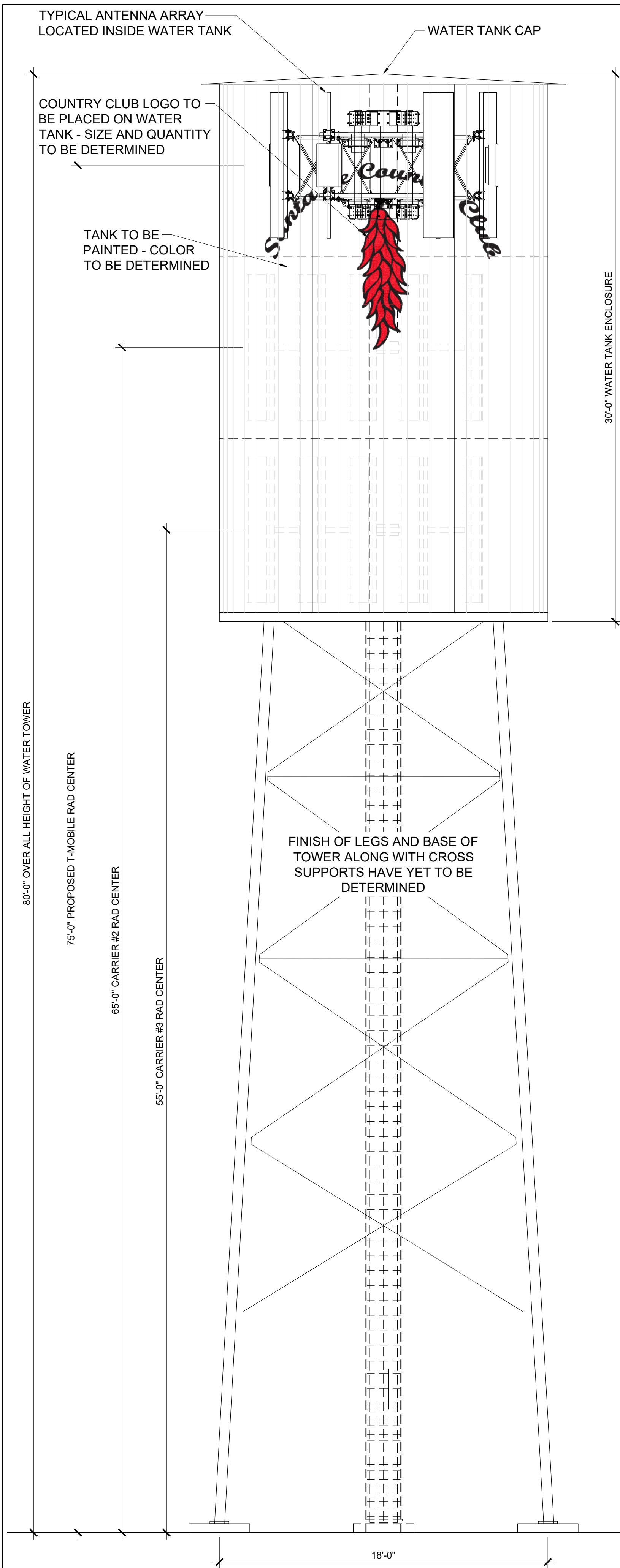
NEW ENLARGED SITE PLAN

22"x34" SCALE: 3/16" = 1'-0"
 11"x17" SCALE: 3/32" = 1'-0"



1





PROPOSED WATER TANK ELEVATION

22"x34" SCALE: 3/16" = 1'-0"
 11"x17" SCALE: 3/32" = 1'-0"



1

NOT USED

CROWN CASTLE
 2055 S. STEARMAN DRIVE
 CHANDLER, AZ 85286
 OFFICE: (602) 845-1722

PLANS PREPARED BY
Young design corp

10245 E. Via Linda, Scottsdale, AZ 85258
 ph: 480 451 9609

T-Mobile
 4830 PAN AMERICAN FREEWAY NE
 SUITE A
 ALBUQUERQUE, NEW MEXICO 87109

SEAL

NO.	DATE	DESCRIPTION
A	4/4/23	REVIEW
B	4/28/23	REVIEW
C	9/12/24	REVIEW
D	4/21/25	REVIEW

ARCHITECTS JOB NO.
 YDC-10463

PROJECT INFORMATION
SANTA FE COUNTRY CLUB
 CROWN B.U.N. # 827314
 3950 COUNTRY CLUB ROAD
 SANTA FE, NM 87592

SHEET TITLE
ELEVATION

JURISDICTION APPROVAL

SHEET NUMBER
A-3

2