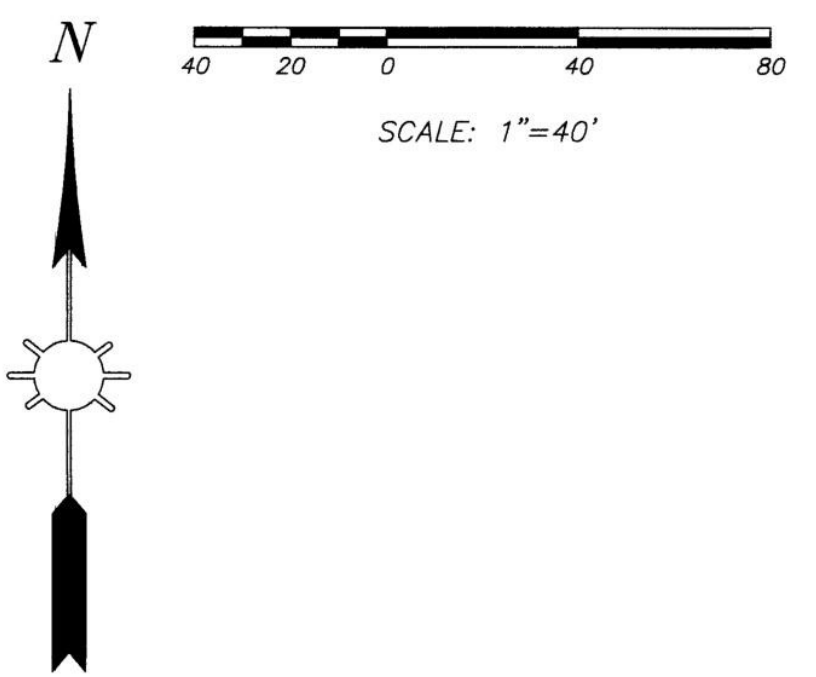
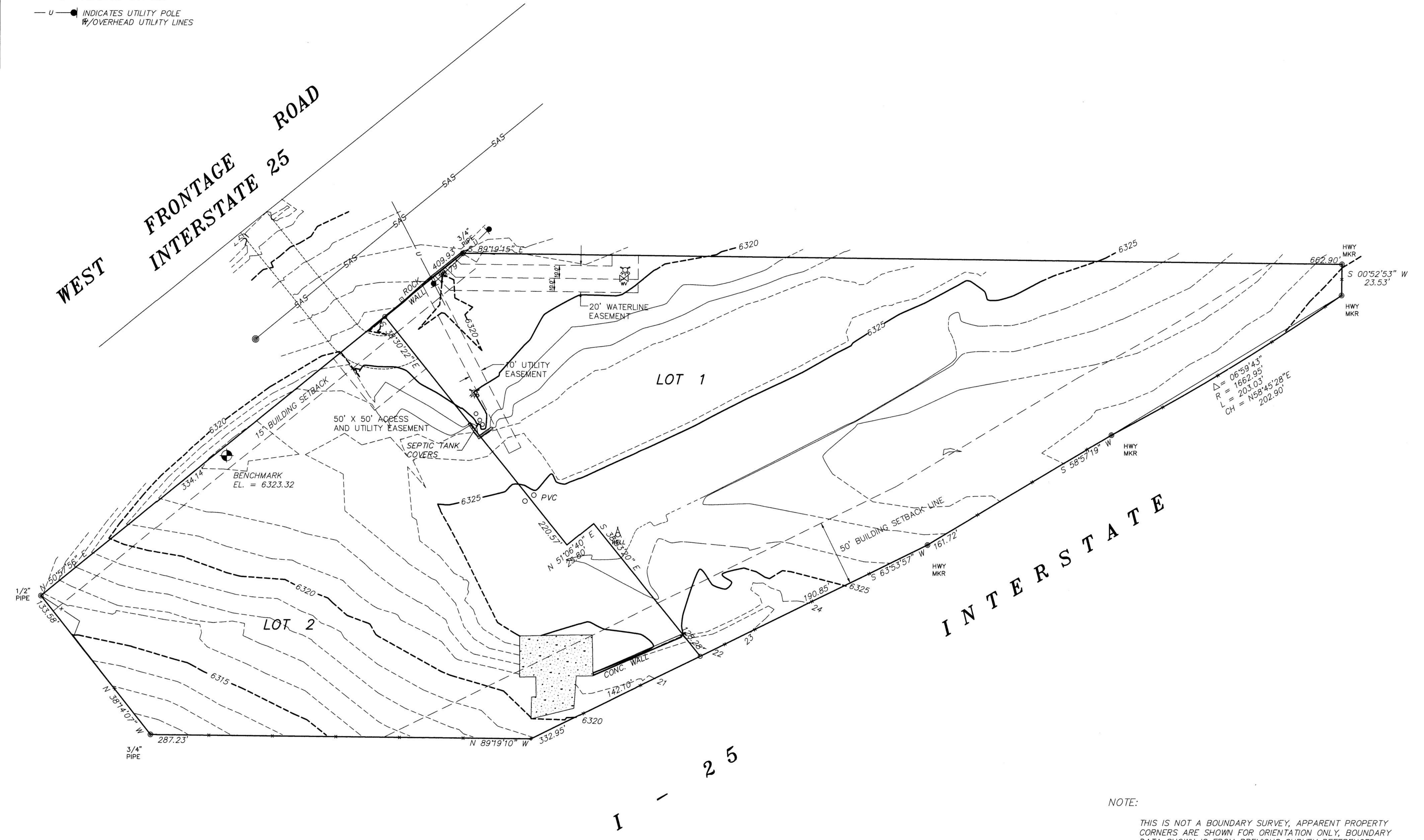


VICINITY MAP



- LEGEND**
- INDICATES POINTS FOUND AS NOTED
 - INDICATES 1/2" REBAR W/CAP SET THIS SURVEY
 - INDICATES CALCULATED POINT NOT SET
 - ⊙ INDICATES MANHOLE
 - u — INDICATES UTILITY POLE
 - # — INDICATES OVERHEAD UTILITY LINES



NOTE:
 THIS IS NOT A BOUNDARY SURVEY, APPARENT PROPERTY CORNERS ARE SHOWN FOR ORIENTATION ONLY, BOUNDARY DATA SHOWN IS FROM PREVIOUS SURVEY REFERENCED HEREON.

TOPOGRAPHY BY FIELD SURVEYS
 USING TIMBLE R8, MODEL 2 RECEIVERS
 ELEVATIONS BASED ON NAVD 88 DATUM.
 THIS TOPOGRAPHIC PLAN MEETS CURRENT
 NATIONAL MAP ACCURACY STANDARDS.

Michael V. Trujillo
 MICHAEL V. TRUJILLO, N.M.P.S. No. 12130



ASSOCIATED SURVEYS MICHAEL V. TRUJILLO NMPS No. 12130 1120 CAMINO CONSUELO SANTA FE, NEW MEXICO 87507	TOPOGRAPHIC SURVEY FOR RZX PROPERTY, LLC LOT 1 AND LOT 2 WITHIN SECTION 24, T.16N., R.8E., N.M.P.M. SANTA FE, NEW MEXICO	SCALE 1" = 40' DATE JUNE 30, 2021 DRAWN-BY M.V.T.
	CHECKED-BY M.V.T. PROJECT No.	