

L-601 / VALVE CHART

STATION NO.	GENERAL LOCATION	HEAD TYPE	VALVE SIZE	TOTAL ZONE GPM	PSI @ HEAD
1	TREES & PINONS	DRIP	1"	TREES 30	
2	SHRUBS	DRIP	1"	SHRUBS 30	

PIPE CHART, SCHE. 40 PVC:

PIPE SIZE	FLOW RATE
1.0"	0 to 12
1.25"	13 to 22
1.50"	23 to 30
2.0"	31 to 50

EMITTER SCHEDULE:

PLANT TYPE	GPH
TREES	12
EVERGREEN TREES	6
NATIVE SHRUBS	2

RZX/ IRRIGATION WATER CALCULATIONS

THE IRRIGATION WATER USE CALCULATIONS ARE BASED ON RZX - 100% CD PLAN DATE 04/08/26, AND CITY OF SANTA FE DEVELOPMENT CODE FOR LANDSCAPE IMPROVEMENTS.

IRRIGATION APPLICATION RATE
 - DETREES ARE BASED ON 12 GPH
 - PINONS ARE BASED ON 6GPH
 - SHRUBS ARE BASED ON 2 GPH

TOTAL IRRIGATION APPLICATION RATE PER EACH 1 HOUR RUN TIME
 13 TREES X 12 GPH = 156 GALLONS PER CYCLE
 6 PINONS X 6 GPH = 36 GALLONS PER CYCLE
 45 SHRUBS X 2 GPH = 90 GALLONS PER CYCLE
TOTAL = 282 TOTAL

YEAR 1 AND 2
 TOTAL ANNUAL USE BASED ON APPROX. 90 RUNS.
 - 4 MONTHS @ 1 RUN TIME PER MONTH. = 4 RUNS
 - 4 MONTHS @ 1 RUN TIME PER WEEK. = 16 RUNS
 - 4 MONTHS @ 4 RUN TIMES PER WEEK = 64 RUNS

84 RUN TIMES X 282 GAL. PER RUN = 14,664 GPY/ 0.045 AC. FT. ANNUALLY

YEAR 3
 TOTAL ANNUAL USE BASED ON APPROX. 77 RUNS.
 - 4 MONTHS AT 1 RUN TIME PER MONTH. = 4 RUNS
 - 4 MONTHS AT 1 RUN TIME PER WEEK. = 16 RUNS
 - 4 MONTHS AT 2 RUN TIMES PER WEEK = 32 RUNS

52 RUN TIMES X 282 GAL. PER RUN = 9024 GPY/ 0.028 AC. FT. ANNUALLY

NOTE:
 THIS WATER BUDGET IS APPROXIMATE AND IS TO BE USED AS A GUIDELINE AND ADJUSTED ACCORDING TO CONDITIONS IN THE FIELD.

GENERAL IRRIGATION NOTES

- IRRIGATION SYSTEM STANDARDS OUTLINED IN SECTION 14-8.4(E) OF THE SFCC WATERHARVESTING AND IRRIGATION STANDARDS AND THE CITY OF SANTA FE LANDSCAPE IRRIGATION DESIGN STANDARDS SHALL BE STRICTLY ADHERED TO.
- IRRIGATION EQUIPMENT IS SHOWN AT A LARGER SCALE FOR CLARITY. THE PIPE ROUTING ON THE PLAN IS SCHEMATIC AND MAY REQUIRE FIELD ADJUSTMENTS TO ACCOMMODATE SITE CONDITIONS.
- WATER MANAGEMENT AND MAINTENANCE OF THE IRRIGATION SYSTEM IS THE SOLE RESPONSIBILITY OF THE PROPERTY OWNER.
- THE IRRIGATION SHALL BE CONNECTED TO CITY WATER. THE POINT OF CONNECTION SHALL CONSIST OF A WATER METER, BACKFLOW PREVENTOR, AND MASTER VALVE.
- ALL NEW PLANTINGS TO BE WATERED BY AUTOMATIC IRRIGATION SYSTEM.
- SLEEVES SHALL BE PLACED UNDER ALL HARDSCAPE SURFACES.
- SLEEVES SHALL BE INSTALLED PRIOR TO INSTALLATION OF HARDSCAPE WITHOUT THE NEED FOR BORING.
- CONTRACTOR TO DESIGN TEMPORARY IRRIGATION SYSTEM FOR NATIVE GRASS AREAS.

IRRIGATION LEGEND

Symbol	Item/Description	Manufacture/Model	Size
	Controller	Rainbird ESP-TM2	6 Station
C	Gate Valve	Brass Gate Valve	1"
	Reduced Pressure Backflow Preventer	Febco 825Y w/ Hot Box	1"
BP	Master Valve Ball Valve	Rainbird PEB Spears Ball Valve Carson Valve Box	1" 17"x24"
	Automatic Drip Valve w/ Pressure Filter Ball Valve	Rainbird PEB Rainbird PRF-100-RBY Spears Ball Valve Carson Valve Box	per notes 1" 17"x24"
	Drip Tee Connection	Schedule 80 Tee	Line size
	Flush Tee	(See Sheet L.603, Detail 6.11)	
T	Drip Emmitter (Not Shown)	Rainbug, 2.0 GPH (1) per shrub	2.0 GPH
	Deciduous Tree Drip Ring	Rainbug (6) 2.0 GPH	12 GPH
	Evergreen Tree Drip Ring	Rainbug (3) 2.0 GPH	6 GPH
	PE Masterline	PE 24" bury depth	1.5"
	PE Lateral	PE 18" depth bury	1" min.
	Poly Drip Line w/ Flush Cap	Rainbird PE Pipe 4" pipe bury	3/4" Dia.
	PVC Sleeve	Class 200 Bury match sleeved pipe	4" D min.

IRRIGATION NOTES

- LAYOUT OF IRRIGATION MAINLINE AND RELATED VALVES IS DIAGRAMMATIC TO SHOW CLEARLY SYSTEM DESIGN. ACTUAL LOCATION OF LINES AND VALVES SHALL BE INTERIOR TO THE SITE PROPERTY LINES AND REVIEWED IN THE FIELD WITH LANDSCAPE ARCHITECT FOR APPROVAL PRIOR TO ANY INSTALLATION OF SYSTEM.
- CONTRACTOR TO DESIGN TEMPORARY IRRIGATION SYSTEM FOR NATIVE GRASS AREAS.

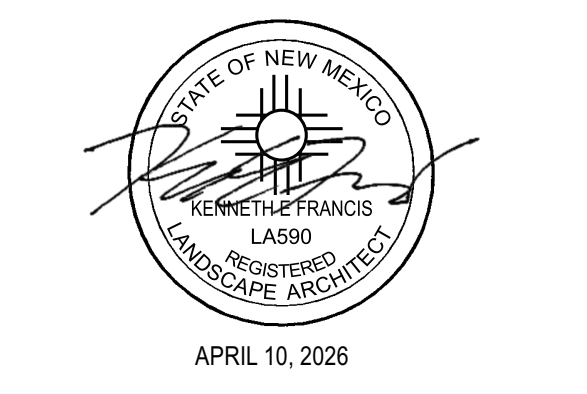
surroundings

landscape
 architecture
 urbanism
 1611 Paseo de Peralta Santa Fe, NM 87501 t: 505 982 3454 www.surroundings.studio

ISSUED FOR PERMIT

REVISIONS:

NO	DATE	NOTE



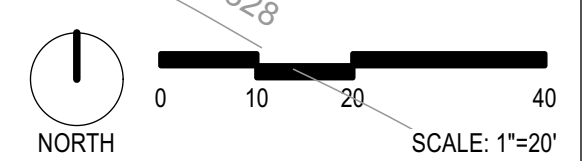
Duplication or reproduction by any means without written consent of Surroundings Studio LLC is a violation of Federal and International law. The information contained on this document is the intellectual property of Surroundings Studio LLC and all rights thereto are Reserved. For exceptions, refer to the Surroundings Studio LLC Contract Provisions.

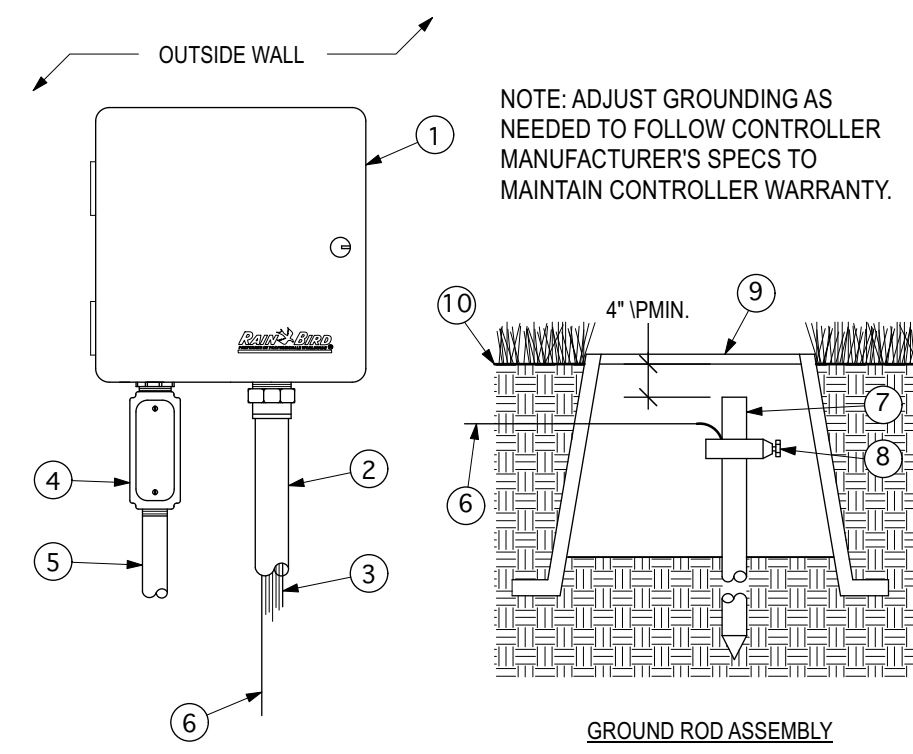
**RZX
 Offices &
 Mini-Storage Units**

27698/27700 W. Frontage Rd
 Santa Fe, NM

SCALE: AS NOTED
 DATE: 04/09/2026
 PROJECT: 1672
 DRAWN BY: MD

**IRRIGATION PLAN
 L.601**

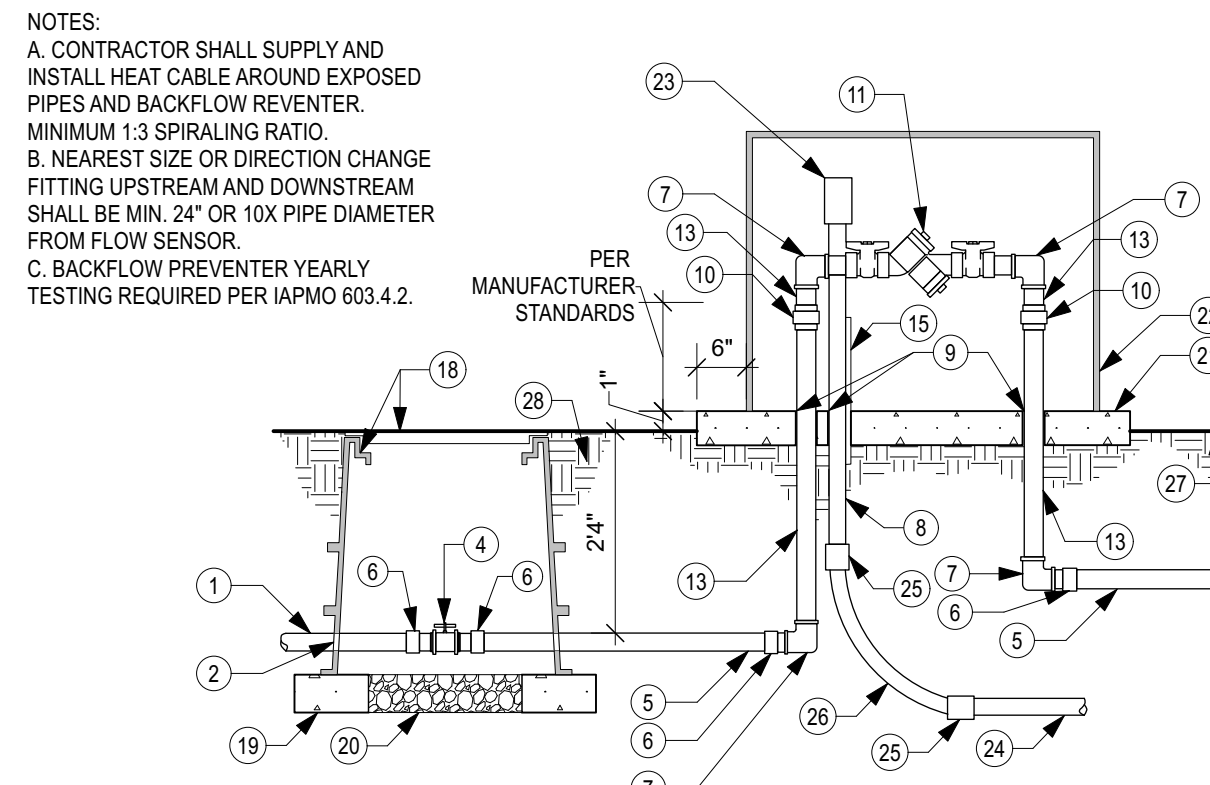




- 1 CONTROLLER, PER PLAN LEGEND, OUTDOOR WALL MOUNT, GROUNDED AS PER MANUFACTURER'S SPECS
- 2 1.5-INCH PVC SCH 40 CONDUIT AND FITTINGS
- 3 WIRES TO REMOTE CONTROL VALVES
- 4 JUNCTION BOX
- 5 1-INCH PVC SCH 40 CONDUIT AND FITTINGS TO POWER SUPPLY
- 6 BARE COPPER WIRE (#10 AWG MIN.); CONNECT TO GROUNDING BUSS IN CONTROLLER CABINET AND ROUTE TO GROUND ROD. PATH TO GROUND ROD SHOULD BE AS STRAIGHT AS POSSIBLE.
- 7 5/8-INCH X 8 FT COPPER CLAD GROUNDING ROD OR GROUNDING PLATE
- 8 GROUND ROD CLAMP OR WELDS
- 9 COVER GROUNDING ROD WITH 10-INCH ROUND VALVE BOX AS SHOWN
- 10 FINISH GRADE

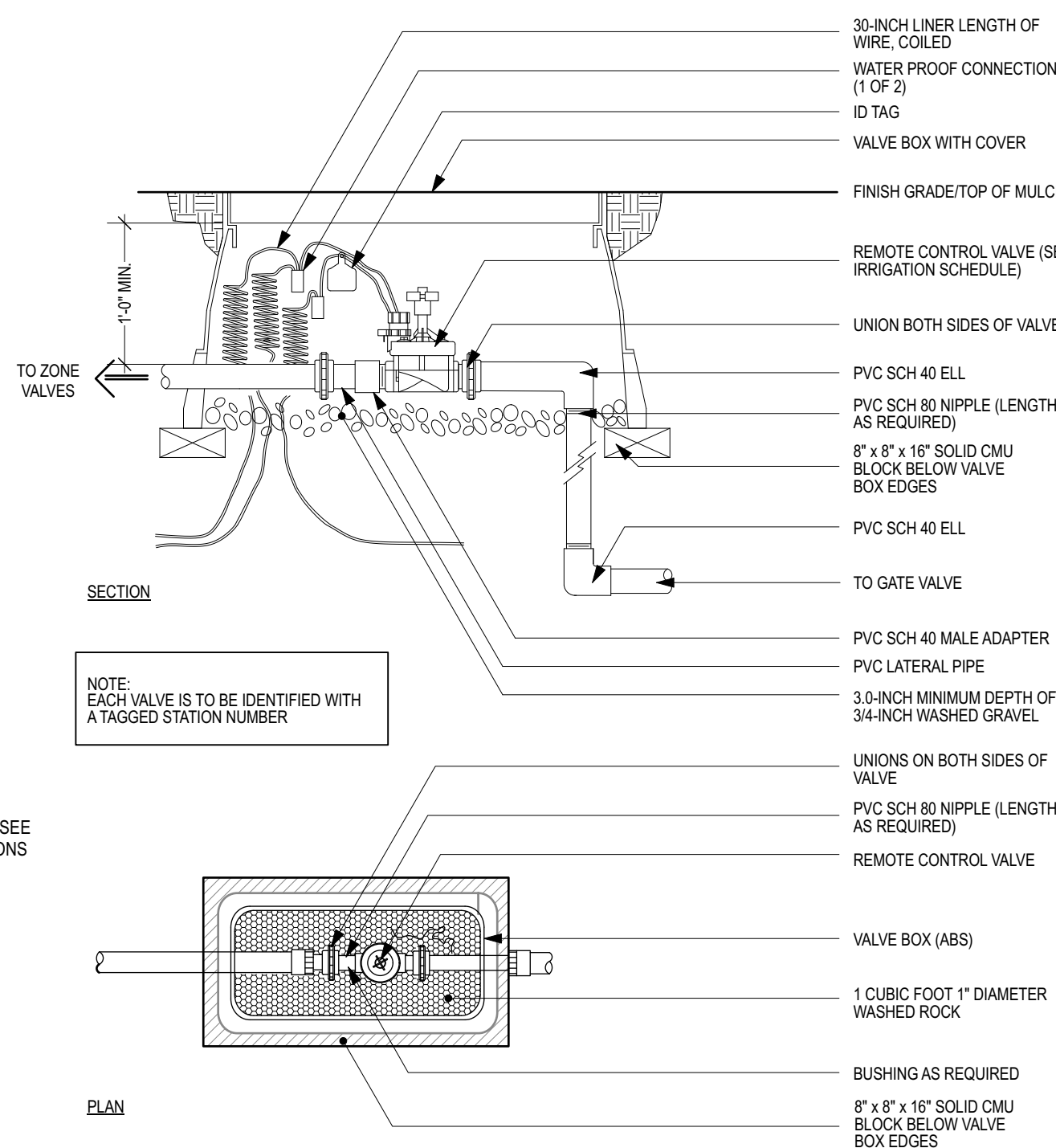
NOTE: ADJUST GROUNDING AS NEEDED TO FOLLOW CONTROLLER MANUFACTURER'S SPECS TO MAINTAIN CONTROLLER WARRANTY.

GROUND ROD ASSEMBLY



- 1 MAINLINE FROM METER
- 2 DRILLED HOLE THROUGH VALVE BOX EXTENSION. DIAMETER SHALL BE 1/2" LARGER THAN PIPE
- 3 SCH. 80 PVC NIPPLE
- 4 SCH. 80 PVC TRUE UNION BALL VALVE
- 5 CONSTANT PRESSURE IRRIGATION MAINLINE
- 6 SCH. 40 PVC MALE ADAPTER
- 7 GALVANIZED STEEL
- 8 RIGID ELECTRICAL CONDUIT SECURED TO UNISTRUT
- 9 PVC SLEEVE AND INSULATION (MIN. 1" THICK)
- 10 GALVANIZED UNION (MIN. 4" ABOVE CONCRETE SLAB)
- 11 REDUCED PRESSURE BACKFLOW PREVENTION DEVICE - SEE IRRIGATION LEGEND
- 12 AUTOMATIC MASTER VALVE - SEE IRRIGATION LEGEND
- 13 GALVANIZED NIPPLE
- 14 NON-CONSTANT PRESSURE IRRIGATION MAINLINE
- 15 UNISTRUT BRACING MINIMUM 2" CLEARANCE FROM ANY EQUIPMENT OR PIPING
- 16 FLOW SENSOR - SEE IRRIGATION LEGEND
- 17 SCH. 80 PVC UNION
- 18 17"x30" VALVE BOX WITH T-STYLE BOLT DOWN COVER AND EXTENSIONS AS REQUIRED - SEE IRRIGATION LEGEND
- 19 8"x8"x16" SOLID CMU BLOCK, FOUR PER VALVE BOX
- 20 6" DEPTH OF 1" DIAMETER WASHED GRAVEL, MINIMUM 2" CLEARANCE FROM BOTTOM OF ANY EQUIPMENT OR PIPING
- 21 4" 3000 PSI CONCRETE SLAB
- 22 PROTECTIVE ENCLOSURE TO LOOK LIKE NATURAL BOULDER-SEE IRRIGATION LEGEND. INSTALL PER MANUFACTURER'S INSTRUCTIONS
- 23 110V ELECTRICAL GFI OUTLET FOR HEAT CABLE. PLACE AWAY FROM RELIEF VALVE
- 24 GRAY ELECTRICAL CONDUIT - DEPTH OF BURY SHALL BE 36"
- 25 WATER TIGHT CONNECTOR
- 26 GRAY ELECTRICAL SWEEP ELL
- 27 FINISH GRADE
- 28 95% COMPACTED SUBGRADE

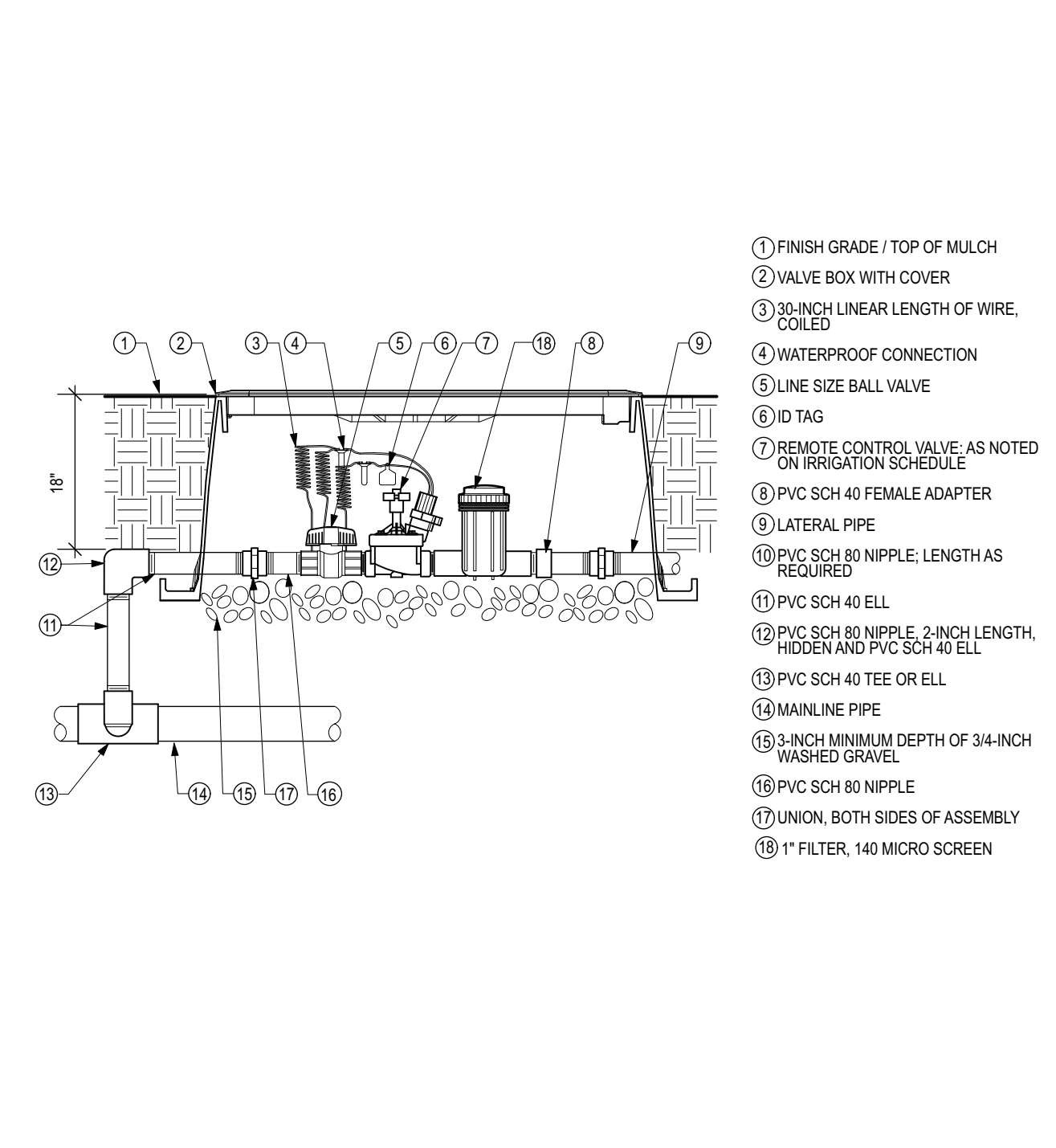
6.2 GATE VALVE / BACKFLOW PREVENTOR
NTS



NOTE: EACH VALVE IS TO BE IDENTIFIED WITH A TAGGED STATION NUMBER

PLAN

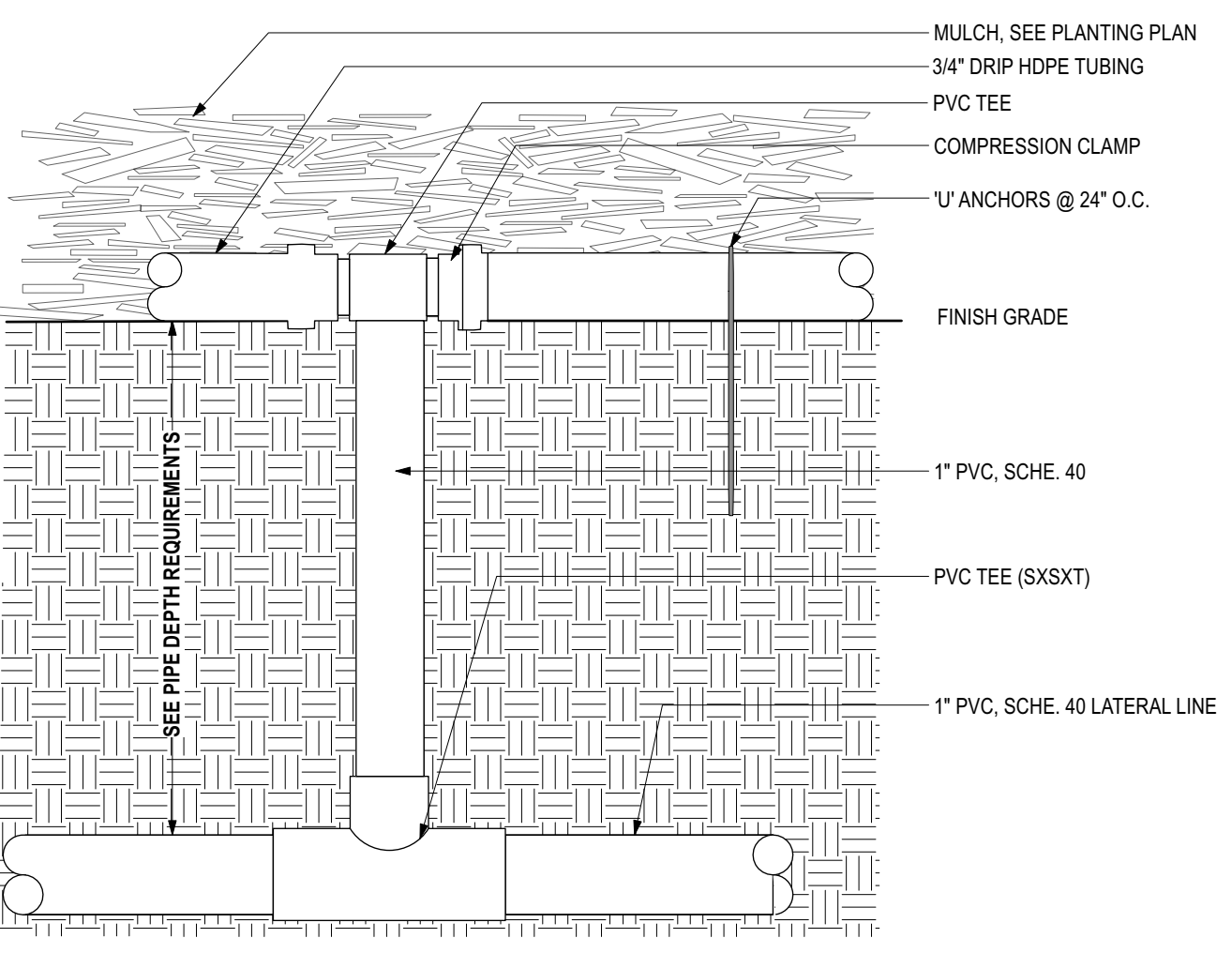
6.3 MASTER VALVE
NTS



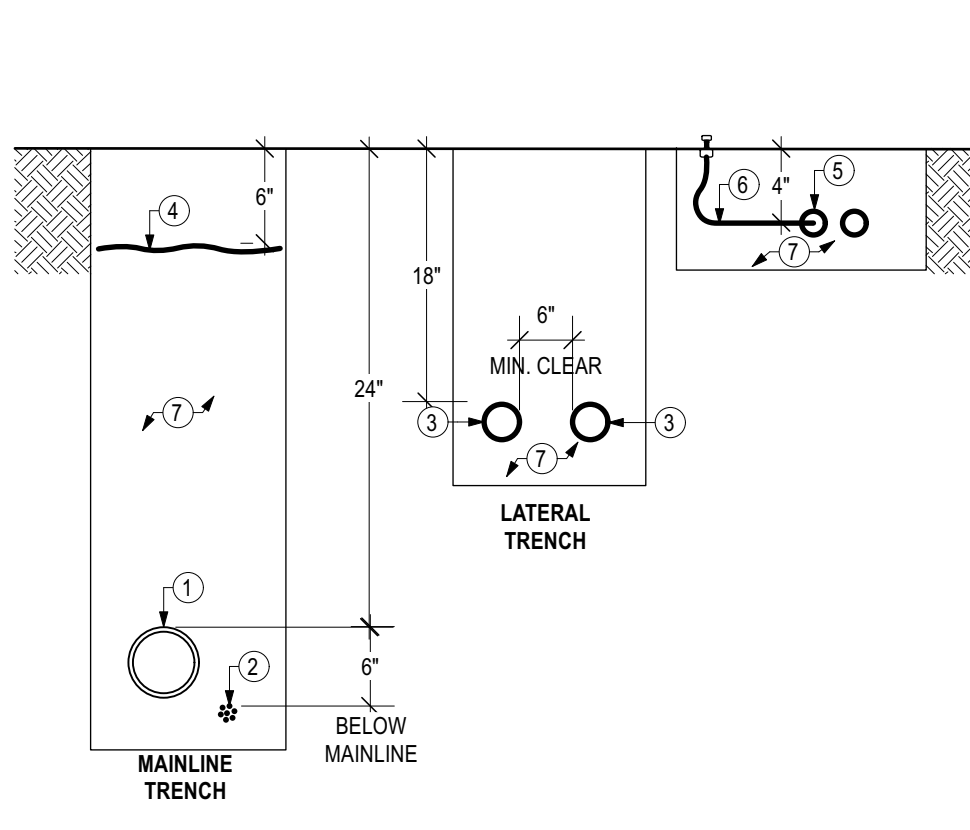
- 1 FINISH GRADE / TOP OF MULCH
- 2 VALVE BOX WITH COVER
- 3 30-INCH LINEAR LENGTH OF WIRE, COILED
- 4 WATERPROOF CONNECTION
- 5 LINE SIZE BALL VALVE
- 6 ID TAG
- 7 REMOTE CONTROL VALVE, AS NOTED ON IRRIGATION SCHEDULE
- 8 PVC SCH 40 FEMALE ADAPTER
- 9 LATERAL PIPE
- 10 SCH 80 NIPPLE, LENGTHS AS REQUIRED
- 11 PVC SCH 40 ELL
- 12 PVC SCH 80 NIPPLE, 2 INCH LENGTH, HIDDEN AND PVC SCH 40 ELL
- 13 PVC SCH 40 TEE OR ELL
- 14 MAINLINE PIPE
- 15 3-INCH MINIMUM DEPTH OF 3/4-INCH WASHED GRAVEL
- 16 PVC SCH 80 NIPPLE
- 17 UNION, BOTH SIDES OF ASSEMBLY
- 18 1" FILTER, 140 MICRO SCREEN

6.4 DRIP VALVE WITH FILTER & PRESSURE REGULATOR
NTS

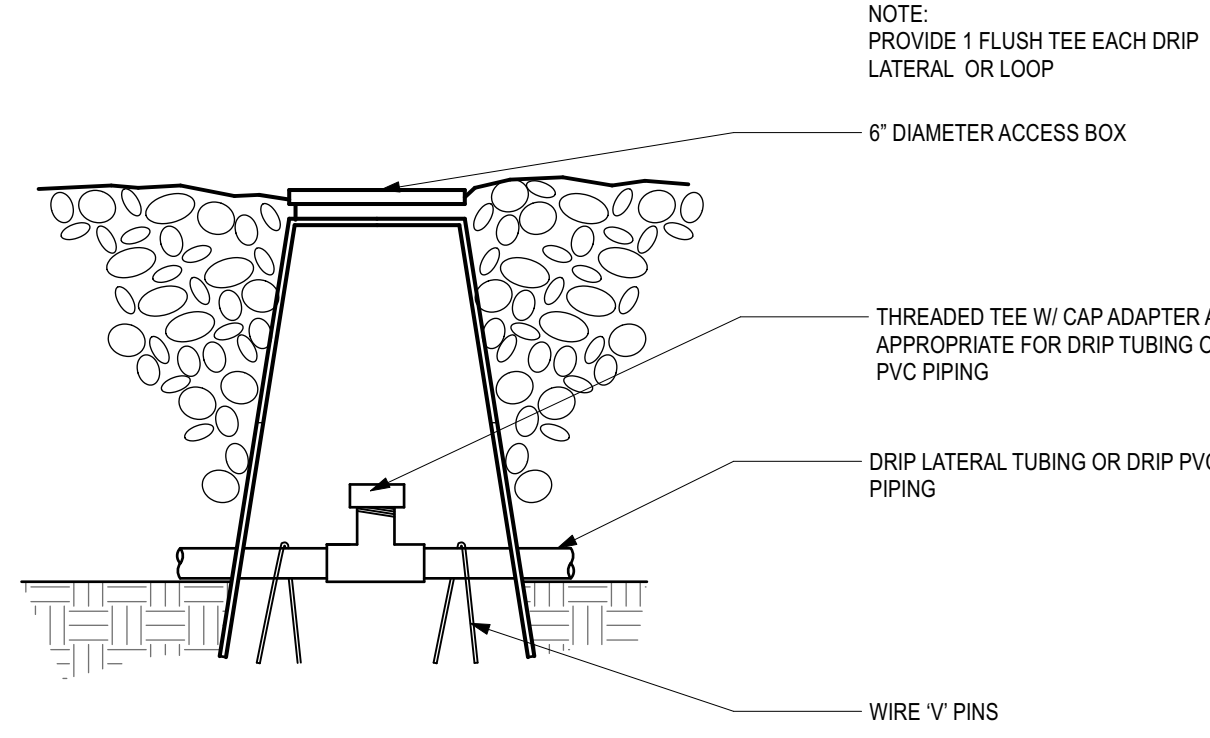
6.1 WALL MOUNTED CONTROLLER
NTS



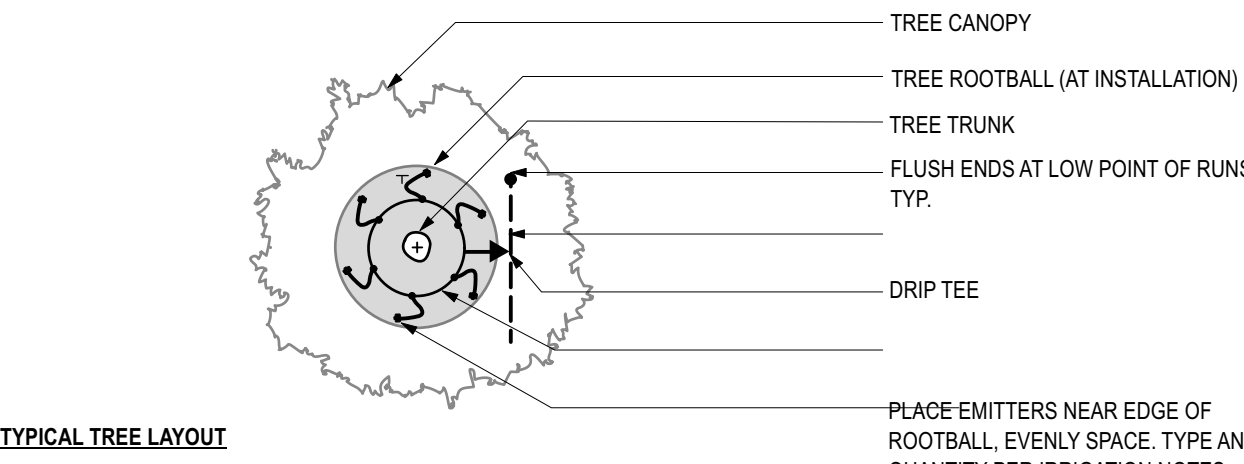
6.5 DRIP TEE
NTS



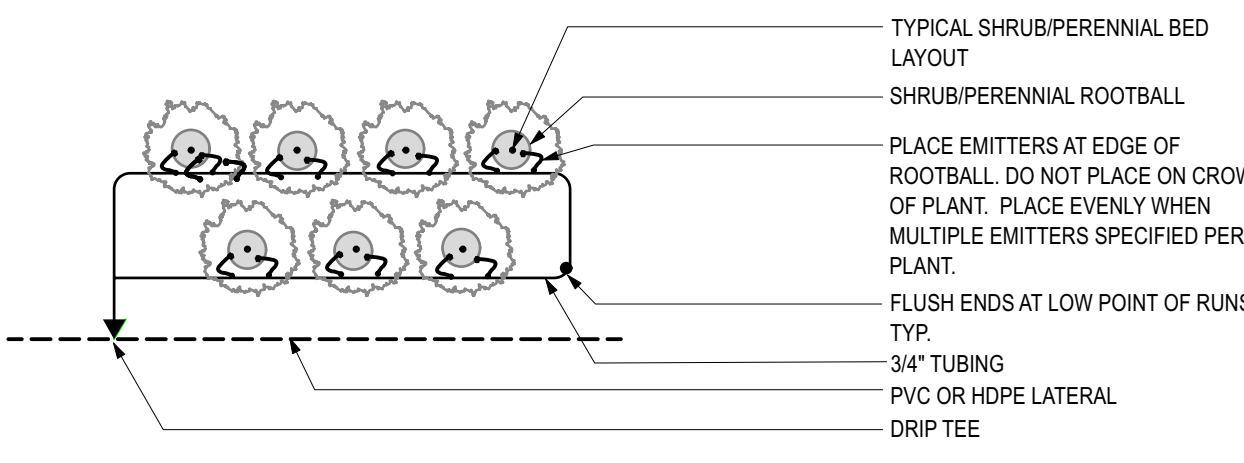
6.6 PIPE BURY
NTS



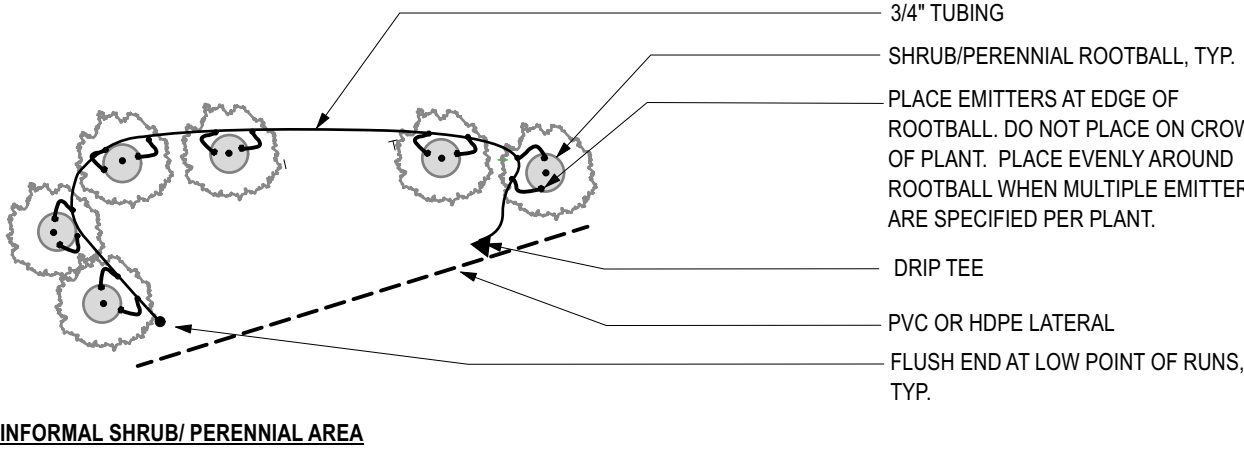
6.7 FLUSH TEE
NTS



TYPICAL TREE LAYOUT



FORMAL SHRUB/ PERENNIAL BEDS



INFORMAL SHRUB/ PERENNIAL AREA

6.8 DRIP SYSTEM LAYOUT
NTS

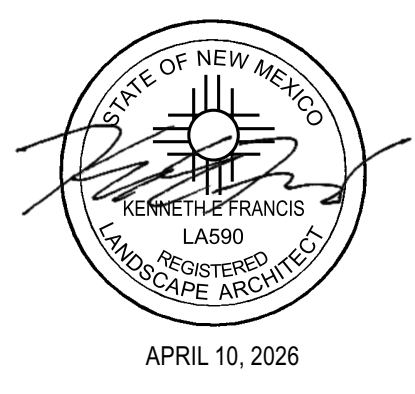
NOTE: REMOVE AND REPLACE SOG, IF TRENCHING THROUGH EXISTING TURF.

- 1 MAINLINE PIPING, SEE PLAN FOR SIZE AND TYPE
- 2 CONTROL WIRES, PLACE CONSISTENTLY TO EAST OR NORTH SIDES OF ADJACENT MAIN LINE
- 3 LATERAL PIPING, SEE PLAN FOR SIZE AND TYPE
- 4 WARNING TAPE: 3" WIDE "NON-POTABLE IRRIGATION" OR SIMILAR
- 5 3/4" POLYETHYLENE DRIP TUBING, 4" MAX. BURY
- 6 1/4" POLYETHYLENE SPAGHETTI DISTRIBUTION TUBING, 4" BURY (DO NOT EXCEED 10' IN LENGTH)
- 7 BACKFILL WITH CLEAN FILL WITH NO ROCK LARGER THAN 1"

NOTE: PROVIDE 1 FLUSH TEE EACH DRIP LATERAL OR LOOP

ISSUED FOR PERMIT

REVISIONS:		
NO	DATE	NOTE
△		
△		
△		
△		
△		
△		



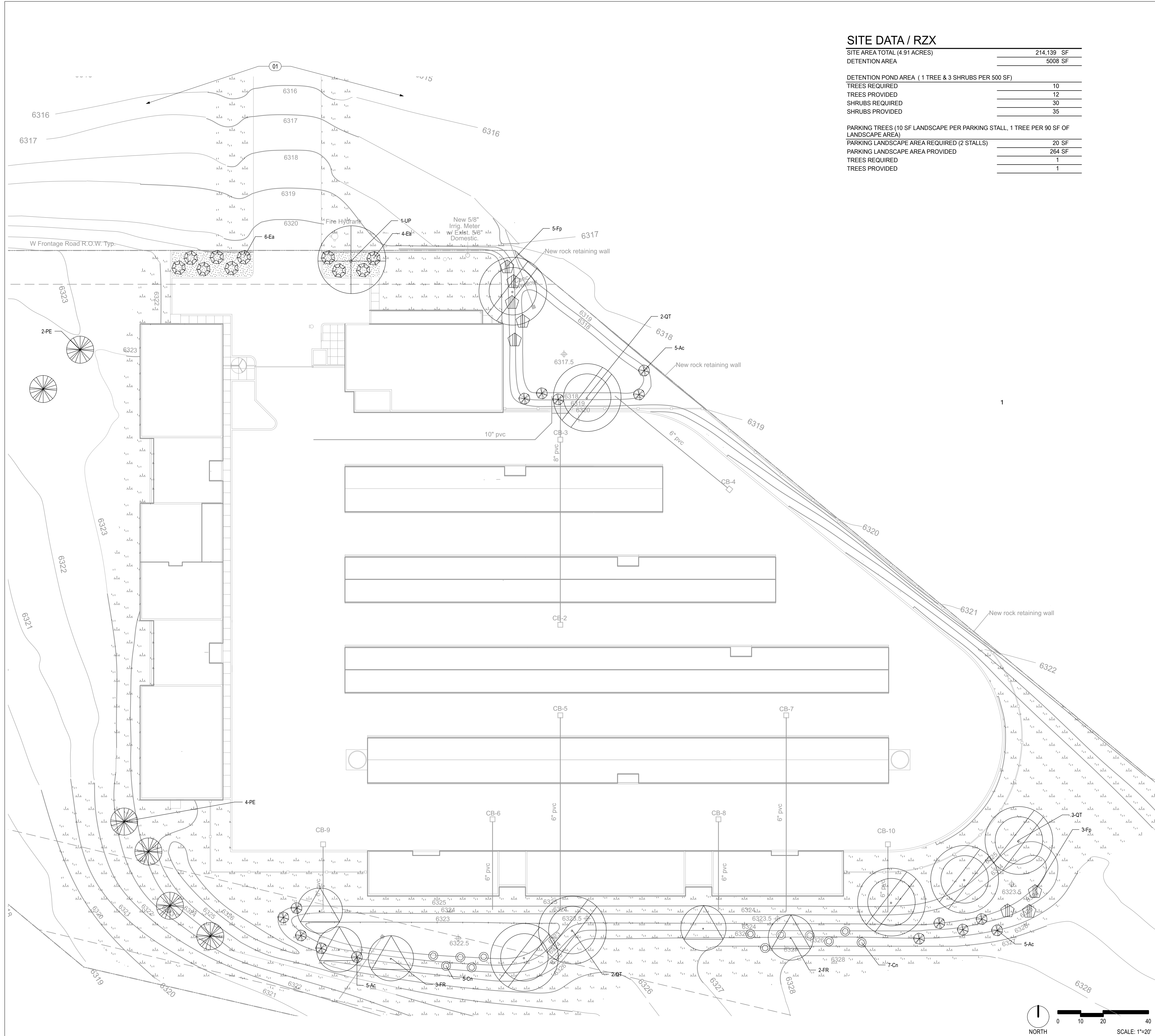
Duplication or reproduction by any means without written consent of Surroundings Studio LLC is a violation of Federal and International law. The information contained on this document is the intellectual property of Surroundings Studio LLC and all rights thereto are Reserved. For exceptions, refer to the Surroundings Studio LLC Contract Provisions.

RZX
Offices &
Mini-Storage Units

27698/27700 W. Frontage Rd
Santa Fe, NM

SCALE: AS NOTED
DATE: 04/09/2026
PROJECT: 1672
DRAWN BY: MD

IRRIGATION DETAILS
L.602



SITE DATA / RZX

SITE AREA TOTAL (4.91 ACRES)	214,139 SF
DETENTION AREA	5008 SF
DETENTION POND AREA (1 TREE & 3 SHRUBS PER 500 SF)	
TREES REQUIRED	10
TREES PROVIDED	12
SHRUBS REQUIRED	30
SHRUBS PROVIDED	35
PARKING TREES (10 SF LANDSCAPE PER PARKING STALL, 1 TREE PER 90 SF OF LANDSCAPE AREA)	
PARKING LANDSCAPE AREA REQUIRED (2 STALLS)	20 SF
PARKING LANDSCAPE AREA PROVIDED	264 SF
TREES REQUIRED	1
TREES PROVIDED	1

GENERAL PLANTING NOTES

- PRIOR TO BEGINNING WORK ON THE PROJECT, THE LANDSCAPE CONTRACTOR SHALL REVIEW THE PROJECT IN THE FIELD WITH THE OWNER'S REPRESENTATIVE.
- CONTRACTOR SHALL REFER TO CIVIL DRAWINGS FOR ALL GRADING AND DRAINAGE INFORMATION. DO NOT RELY ON LANDSCAPE DRAWINGS FOR GRADING INFORMATION.
- THE LANDSCAPE PLAN SHALL BE COORDINATED WITH THE GRADING AND DRAINAGE PLAN.
- ALL LANDSCAPE AREAS SHALL BE RECESSED BELOW GRADE.
- CURB CUTS SHALL BE PLACED AT STRATEGIC LOCATIONS TO ALLOW FOR THE COLLECTION OF RUNOFF WATER IN LANDSCAPE AREAS.
- IT IS THE LANDSCAPE CONTRACTOR'S RESPONSIBILITY TO LOCATE UNDERGROUND UTILITIES PRIOR TO COMMENCEMENT OF PLANTING AND IRRIGATION OPERATIONS.
- IF DISCREPANCIES OCCUR BETWEEN THE DRAWINGS AND THE SITE CONDITIONS, THE LANDSCAPE CONTRACTOR SHALL NOTIFY THE OWNER'S REPRESENTATIVE FOR CLARIFICATION PRIOR TO PROCEEDING ON THAT PORTION OF WORK.
- LANDSCAPING SHALL BE INSTALLED ACCORDING TO THE APPROVED PLAN; INSTALLATION SHALL BE COMPLETE WITHIN 60 DAYS OF THE RELATED BUILDINGS OCCUPANCY.
- THE LANDSCAPE ARCHITECT SHALL APPROVE PLANT MATERIAL PRIOR TO PLANTING AND RESERVES THE RIGHT TO REFUSE PLANT MATERIAL DEEMED UNACCEPTABLE.
- PLANT MATERIAL SHALL BE NURSERY GROWN AND PLANTS SHALL BEAR THE SAME RELATION TO FINISHED GRADE AS IN ORIGINAL NURSERY CONDITION.
- MINIMUM INSTALLATION SIZES FOR PLANT MATERIAL VARY BY SPECIES. SEE SITE CALCULATIONS.
- CONTRACTOR SHALL VERIFY PLANT QUANTITIES. PLANT QUANTITIES ARE SHOWN FOR INFORMATIONAL PURPOSES ONLY.
- TREES ARE TO BE STAKED.
- SOIL AMENDMENTS ARE REQUIRED FOR ALL PLANTING AREAS.
- NATIVE SOILS MAY BE USED FOR LANDSCAPE INSTALLATION, BUT SHALL BE BLENDED WITH IMPORTED AMENDMENTS, COMPOST, AND SOIL CONDITIONER.
- ALL LANDSCAPE AREAS THAT ARE NOT SEEDED, SHALL BE COVERED WITH GRAVEL OR LARGE AGGREGATE STONE. SEE PLANTING PLAN FOR GRAVEL AND LARGE AGGREGATE AREAS. MULCH SHALL BE MIN. 3" DEPTH OVER NON-WOVEN WEED BARRIER, EXCLUDING DETENTION AREAS, WHICH SHALL BE COVERED WITH 2"-4" Ø ANGULAR OR ROUND COBBLE TO MINIMUM 4" DEPTH.
- LANDSCAPE GRAVEL MULCH AREAS SHALL BE COVERED WITH LANDSCAPE FILTER FABRIC PRIOR TO MULCHING IN ORDER TO MINIMIZE WEED GROWTH AND HELP MAINTAIN SOIL MOISTURE. SEEDED AREAS AND TURF GRASS AREAS SHALL NOT BE COVERED WITH FILTER FABRIC.
- WHERE MULCH IS ADJACENT TO CONCRETE OR ASPHALT, FINISH GRADE OF MULCH SHALL BE 2" BELOW TOP OF CONCRETE, UNLESS OTHERWISE INDICATED.
- EXISTING LANDSCAPE AREAS ADJACENT TO THE PROJECT SITE ARE TO BE PROTECTED DURING DEMOLITION AND CONSTRUCTION.
- TRANSITION LINE BETWEEN EXCAVATION AND NATIVE SOIL SHALL BE SMOOTHLY RAKED, CREATING A CLEAN CONSISTENT GRADE. EXISTING GRADE BELOW NATIVE TREES AND SHRUBS SHALL REMAIN UNDISTURBED THROUGHOUT THE DRIPLINE OF THE PLANT MATERIALS.
- NO MOUNDING OF SOIL, FILL, DIRT, ORGANIC OR INORGANIC DEBRIS SHALL BE ABANDONED UNDER NATIVE PLANT MATERIAL CANOPIES.
- ALL DISTURBED AREAS DUE TO CONSTRUCTION AND NOT PART OF THE LANDSCAPE PLAN SHALL BE REVEGETATED AND IRRIGATED INCLUDING SPOIL PILES AND STOCK PILES OF MATERIAL. GRASS SEED MIX SHALL BE DRYLAND BLEND NATIVE GRASS MIXTURE FROM PLANTS OF THE SOUTHWEST OR EQUAL. SEED RATE SHALL BE 2 LB PER 1000 SF.

PLANTING NOTES

- 01 ANY TREES IN THE STATE RIGHT OF WAY SHALL BE SUBMITTED TO AND REVIEWED BY THE NMDOT FOR APPROVAL.

PLANT PALETTE L.701

TREES						
SYMBOL	ID	QTY	BOTANICAL NAME	COMMON NAME	SIZE	WATER USE
	FR	5	Ulmus 'Frontier'	Frontier Elm	2.0" CAL	Dry
	PE	6	Pinus edulis	Pinon Pine	6" TALL MIN	LOW
	QT	7	Quercus texana	Texas Red Oak	2.0" CAL	Water Range
	UP	1	Ulmus parvifolia	Lacebark Elm	2.0" CAL	MODERATE
SHRUBS						
SYMBOL	ID	QTY	BOTANICAL NAME	COMMON NAME	SIZE	WATER USE
	Ac	15	Atriplex canescens	Fourwing Salt Bush	5 GAL	Water Range
	Cn	12	Chrysothamnus nauseosus	Chamisa	5 GAL	Water Range
	Ea	10	Euonymus alatus 'Compactus'	Winged Euonymus	5 GAL	LOW
	Fp	8	Fallugia paradoxa	Apache Plume	5 GAL	LOW

LEGEND

- MOUNTAINAIR BROWN 7/8" GRAVEL, 3" DEPTH
- NM DOT CLASS 'A' NATIVE GRASS MIX AND APPLICATION

surroundings

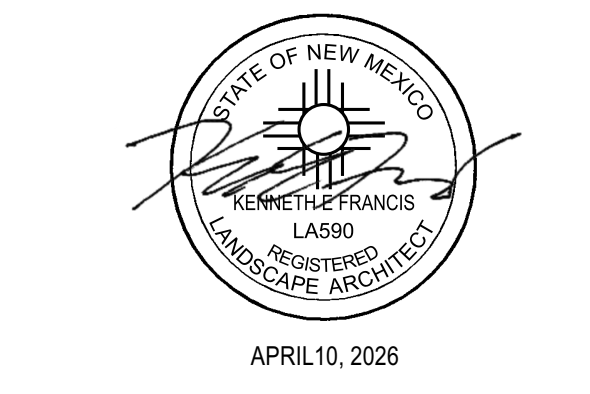
landscape
architecture
urbanism

1611 Paseo de Peralta Santa Fe, NM 87501 t: 505 982 3454 www.surroundings.studio

ISSUED FOR PERMIT

REVISIONS:

NO	DATE	NOTE



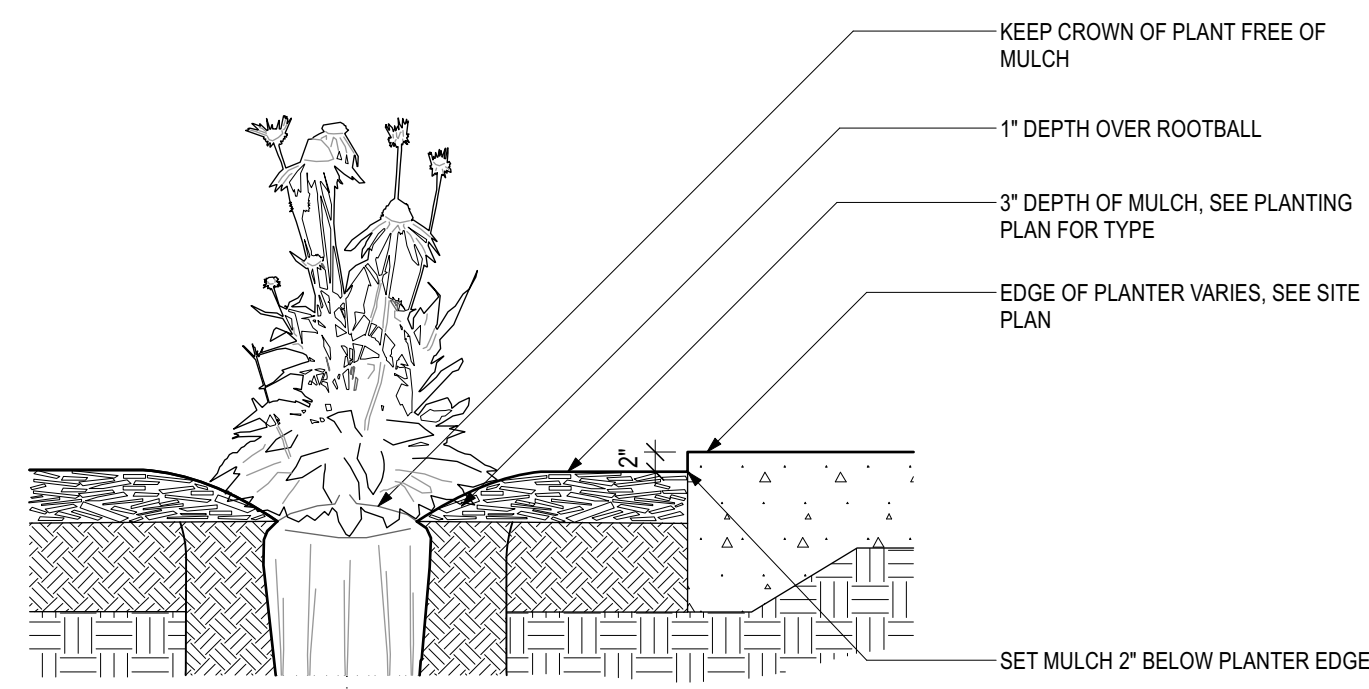
Duplication or reproduction by any means without written consent of Surroundings Studio LLC is a violation of Federal and International law. The information contained on this document is the intellectual property of Surroundings Studio LLC and all rights thereto are Reserved. For exceptions, refer to the Surroundings Studio LLC Contract Provisions.

**RZX
Offices &
Mini-Storage Units**

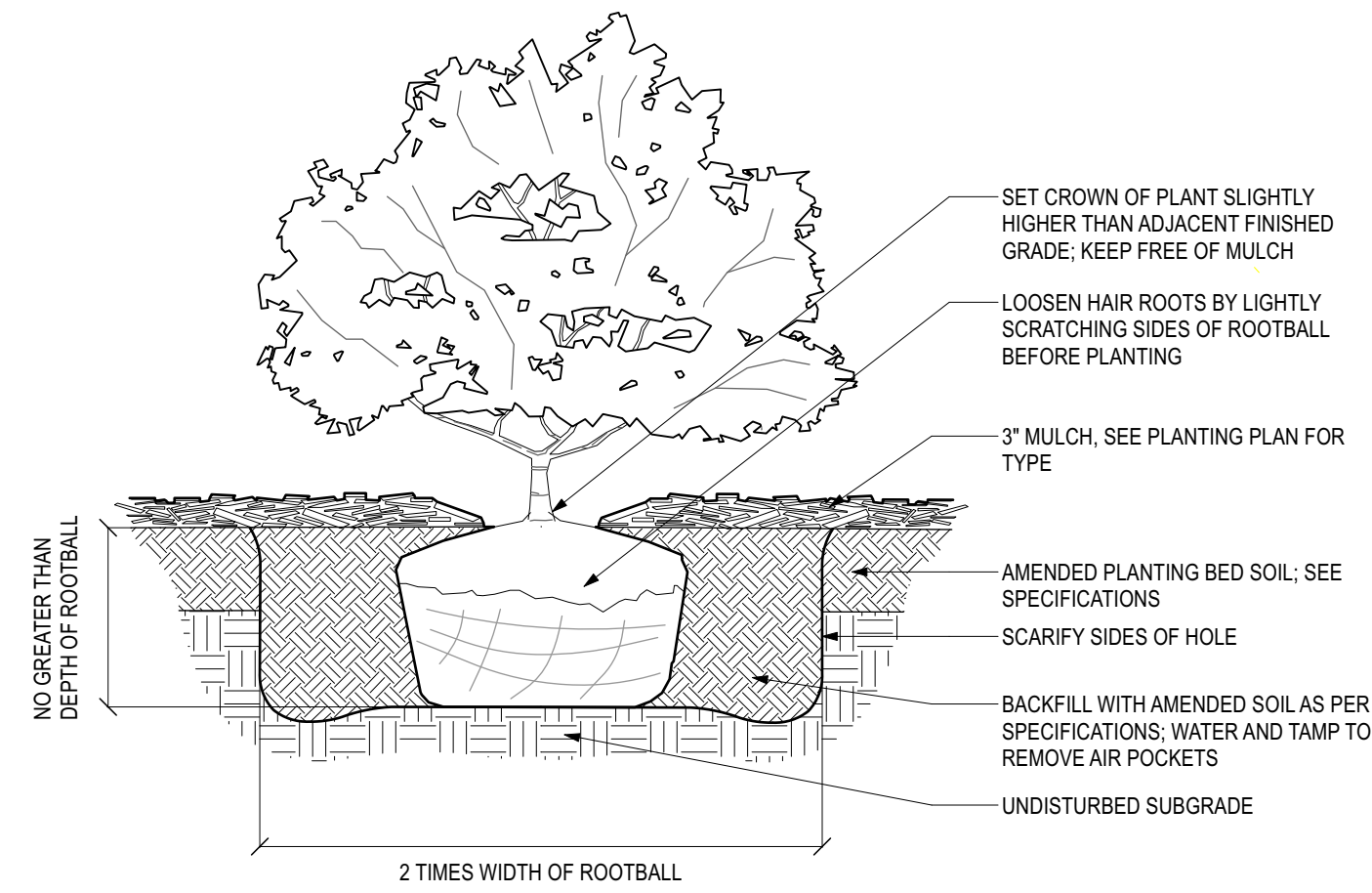
27698/27700 W. Frontage Rd
Santa Fe, NM

SCALE: AS NOTED
DATE: 04/09/2026
PROJECT: 1672
DRAWN BY: MD

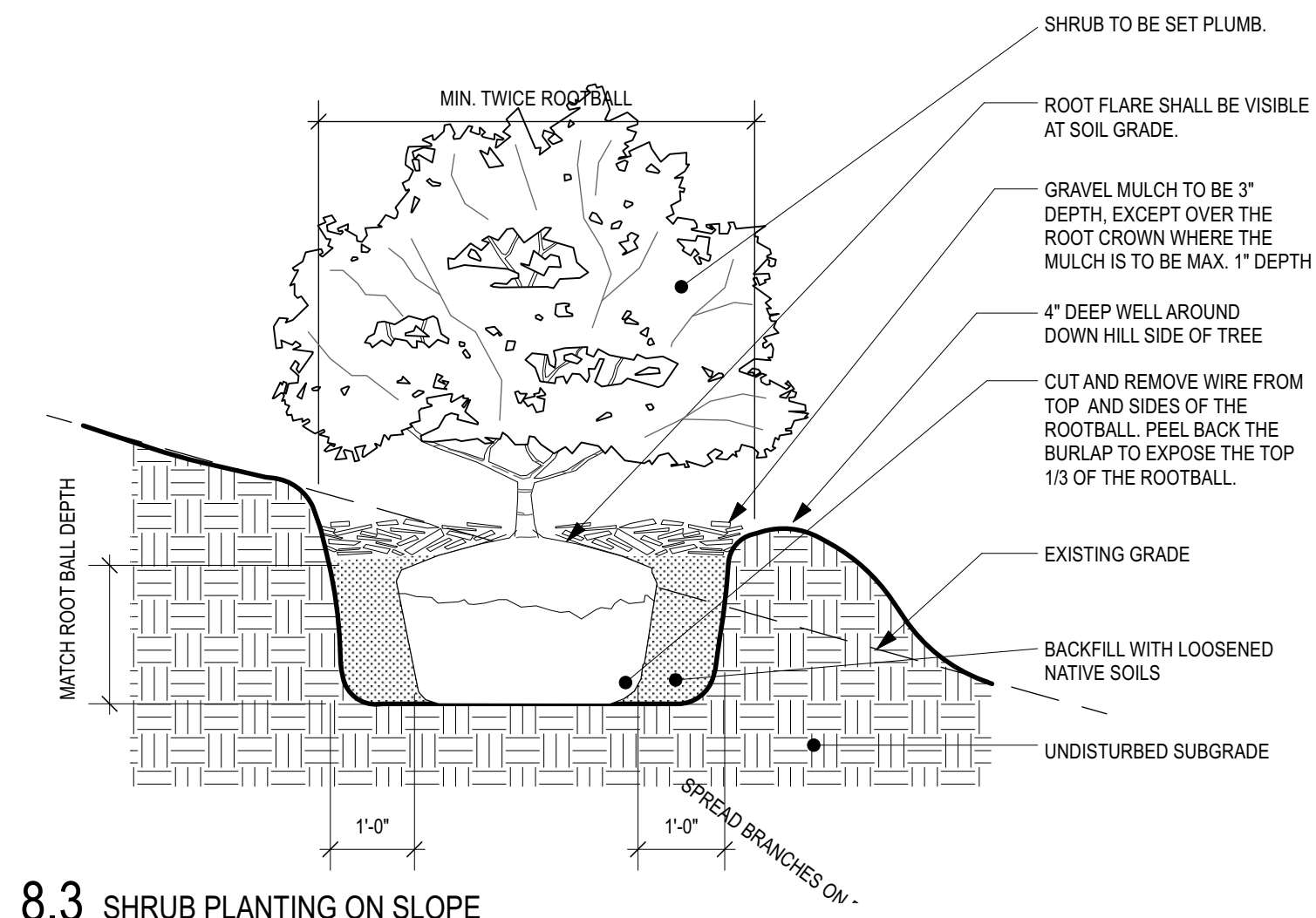
**PLANTING PLAN
L.701**



8.1 MULCH
NTS

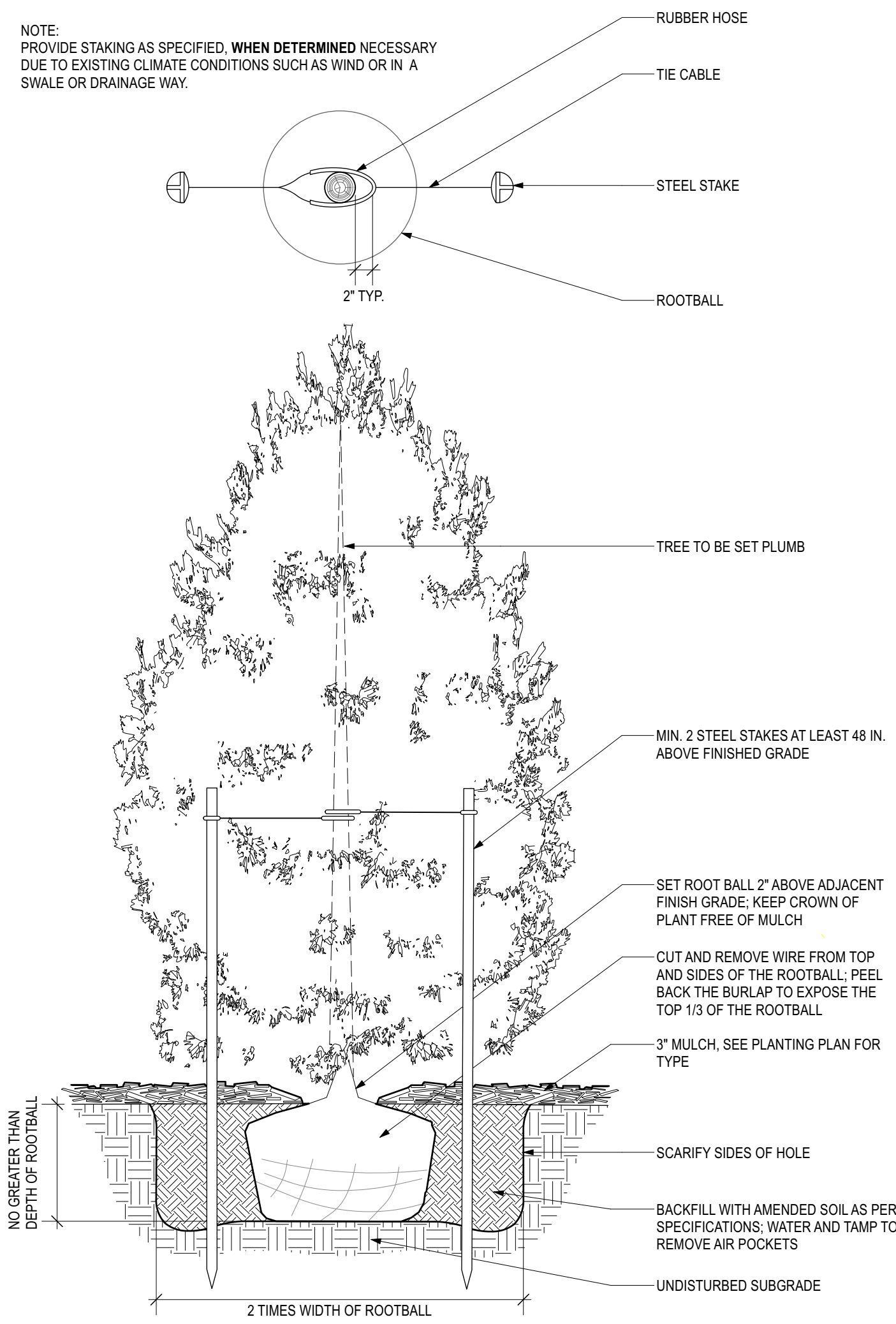


8.2 SHRUB PLANTING
NTS



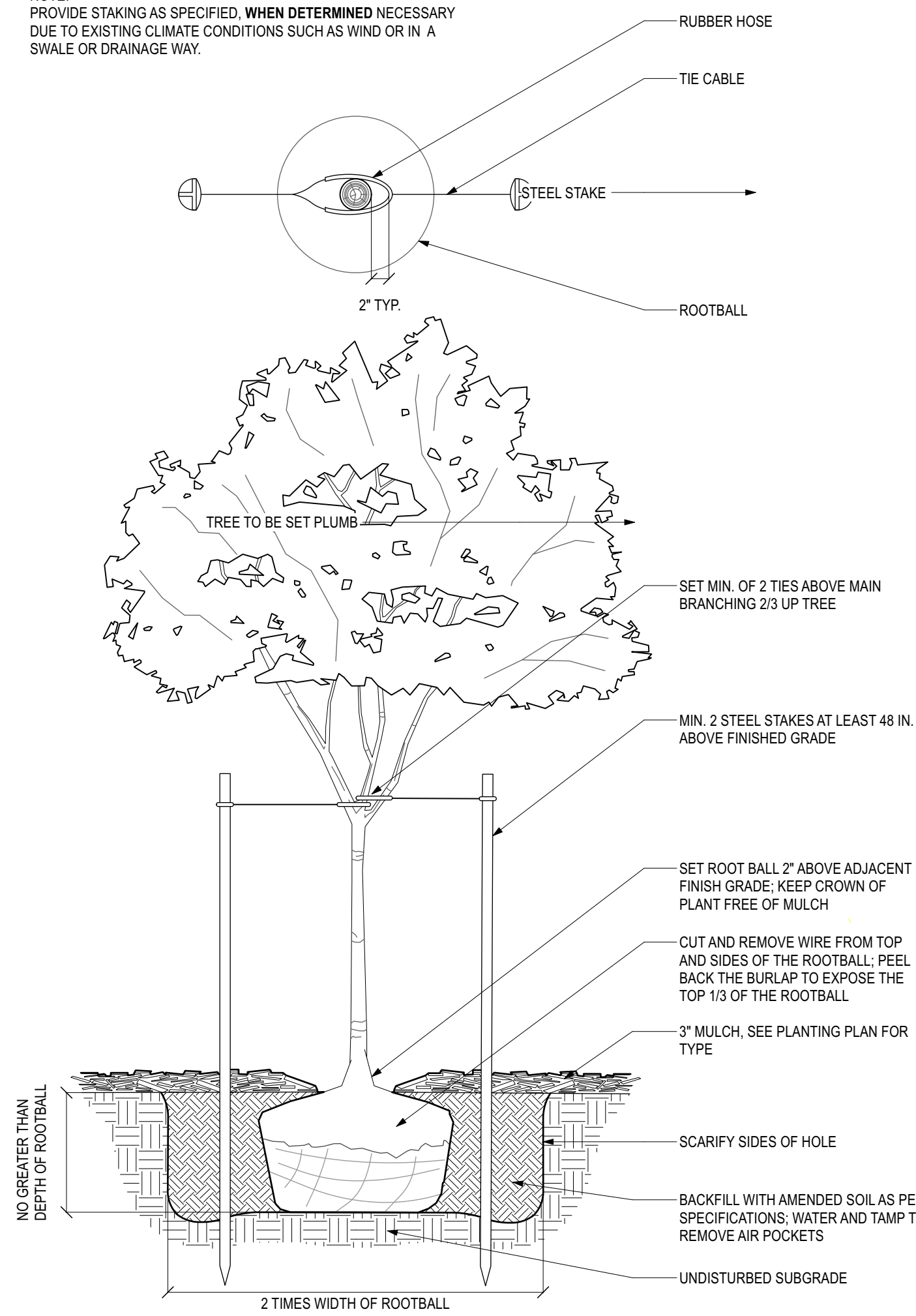
8.3 SHRUB PLANTING ON SLOPE
NTS

NOTE: PROVIDE STAKING AS SPECIFIED, WHEN DETERMINED NECESSARY DUE TO EXISTING CLIMATE CONDITIONS SUCH AS WIND OR IN A SWALE OR DRAINAGE WAY.



8.4 EVERGREEN TREE PLANTING
NTS

NOTE: PROVIDE STAKING AS SPECIFIED, WHEN DETERMINED NECESSARY DUE TO EXISTING CLIMATE CONDITIONS SUCH AS WIND OR IN A SWALE OR DRAINAGE WAY.

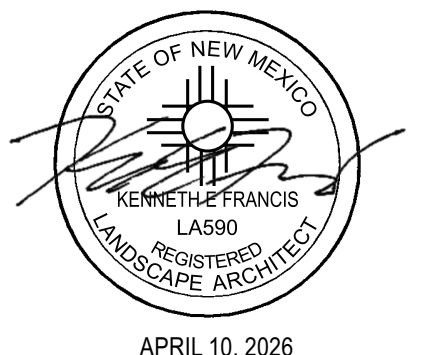


8.5 TREE PLANTING
NTS

ISSUED FOR PERMIT

REVISIONS:

NO	DATE	NOTE
△		
△		
△		
△		
△		
△		



Duplication or reproduction by any means without written consent of Surroundings Studio LLC is a violation of Federal and International law. The information contained on this document is the intellectual property of Surroundings Studio LLC and all rights thereto are Reserved. For exceptions, refer to the Surroundings Studio LLC Contract Provisions.

RZX
Offices &
Mini-Storage Units

27698/27700 W. Frontage Rd
Santa Fe, NM

SCALE: AS NOTED
DATE: 04/09/2026
PROJECT: 1672
DRAWN BY: MD

PLANTING DETAILS
L.702