

City of Santa Fe, New Mexico

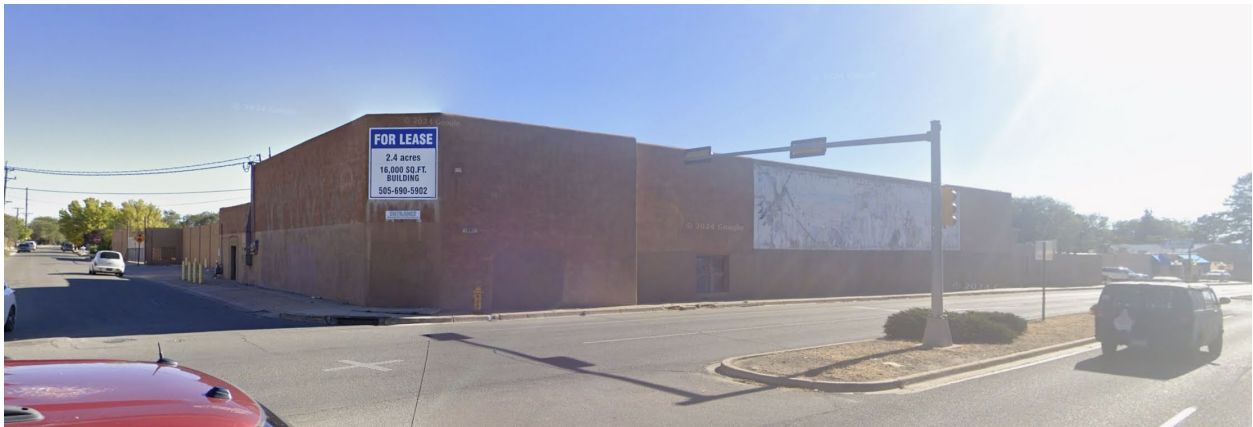
Attachment B Maps and Photos

1. Aerial View
2. Existing Conditions Photos
3. Current Zoning Map
4. Future Land Use Map

Aerial View



Existing Conditions



Northern side of existing structure along Cerrillos Rd on 1802 Cerrillos property.



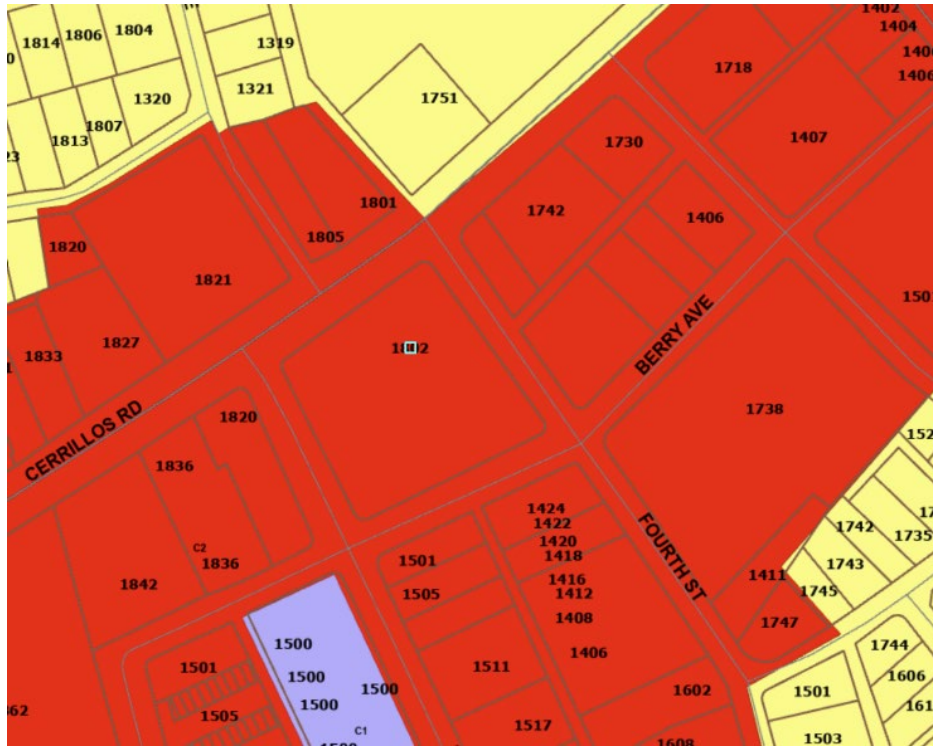
Western side of 1750 Cerrillos Rd property.



Western side of 1361 Fourth Street property.

Current Zoning Map

All properties associated with this development are zoned C-2 (Red). Surrounding zoning is C-2 (Red), R-5 (Yellow), and C-1 (Purple).



Future Land Use Map

All properties associated with this development are designated community commercial on the Future Land Use Map (FLUM). Surrounding designations include community commercial (red), public/institutional (blue), parks (green), 3-7 dwellings per acre (yellow), and office (purple).

