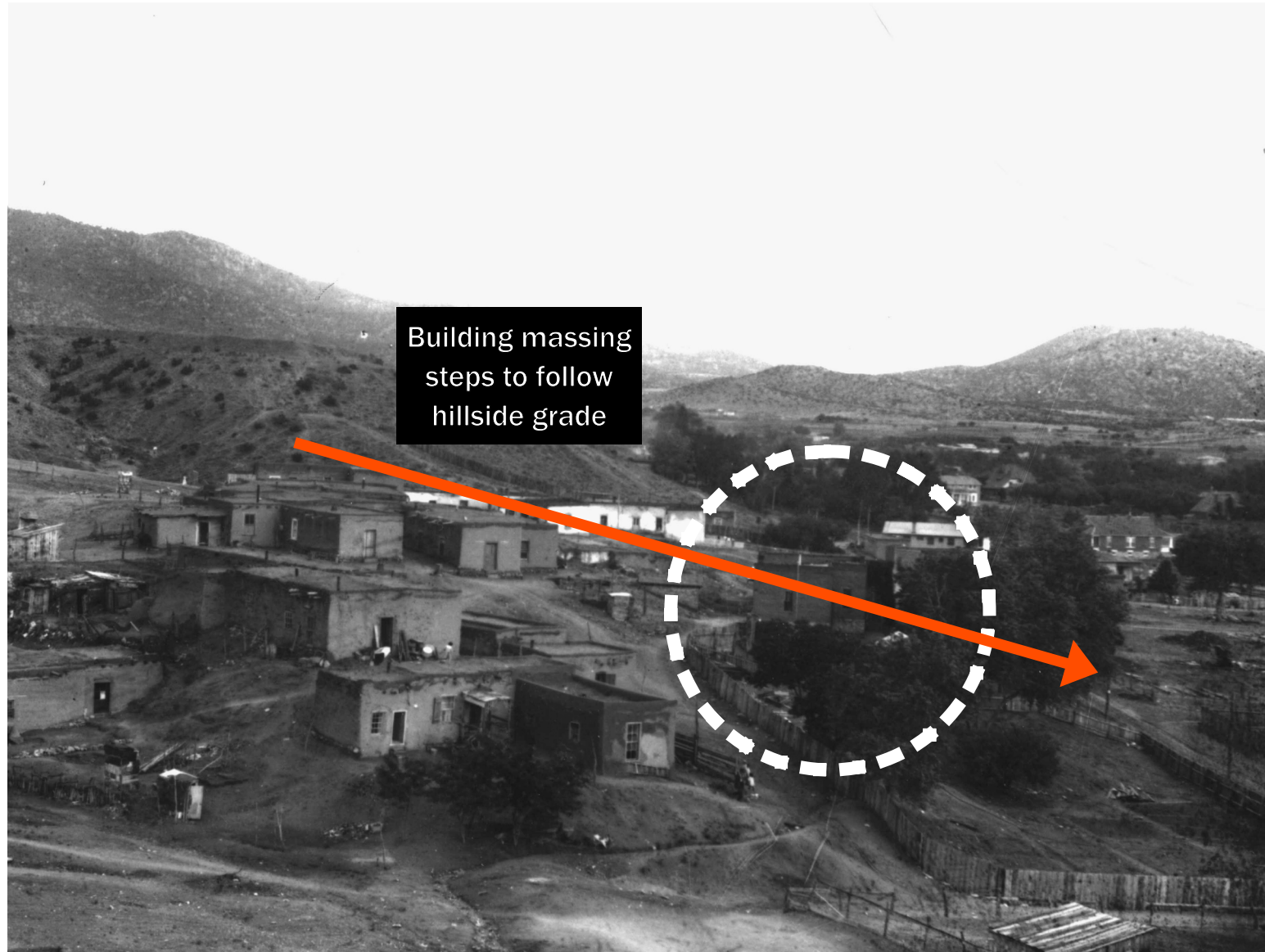


Discussion Summary 5/1/26

- Consider the stepped, layered character of the hillside context - how does the proposed addition fit in?
- Relationship to historic house - how can the house's prominence be preserved?
- Old versus new - how does the addition complement the house while remaining clearly distinct?



1915



2025

Hillside Context — Stepped, Layered Massing from West

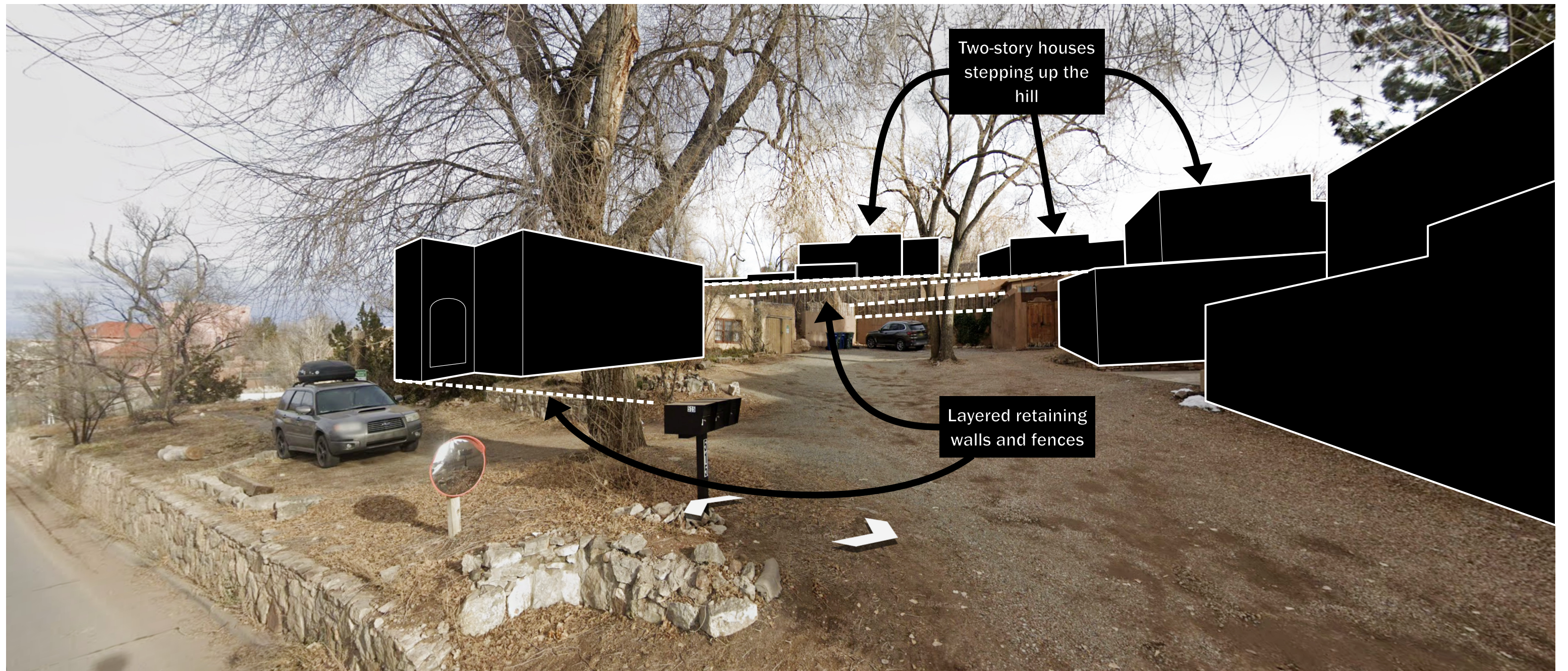


GOOGLE EARTH IMAGES

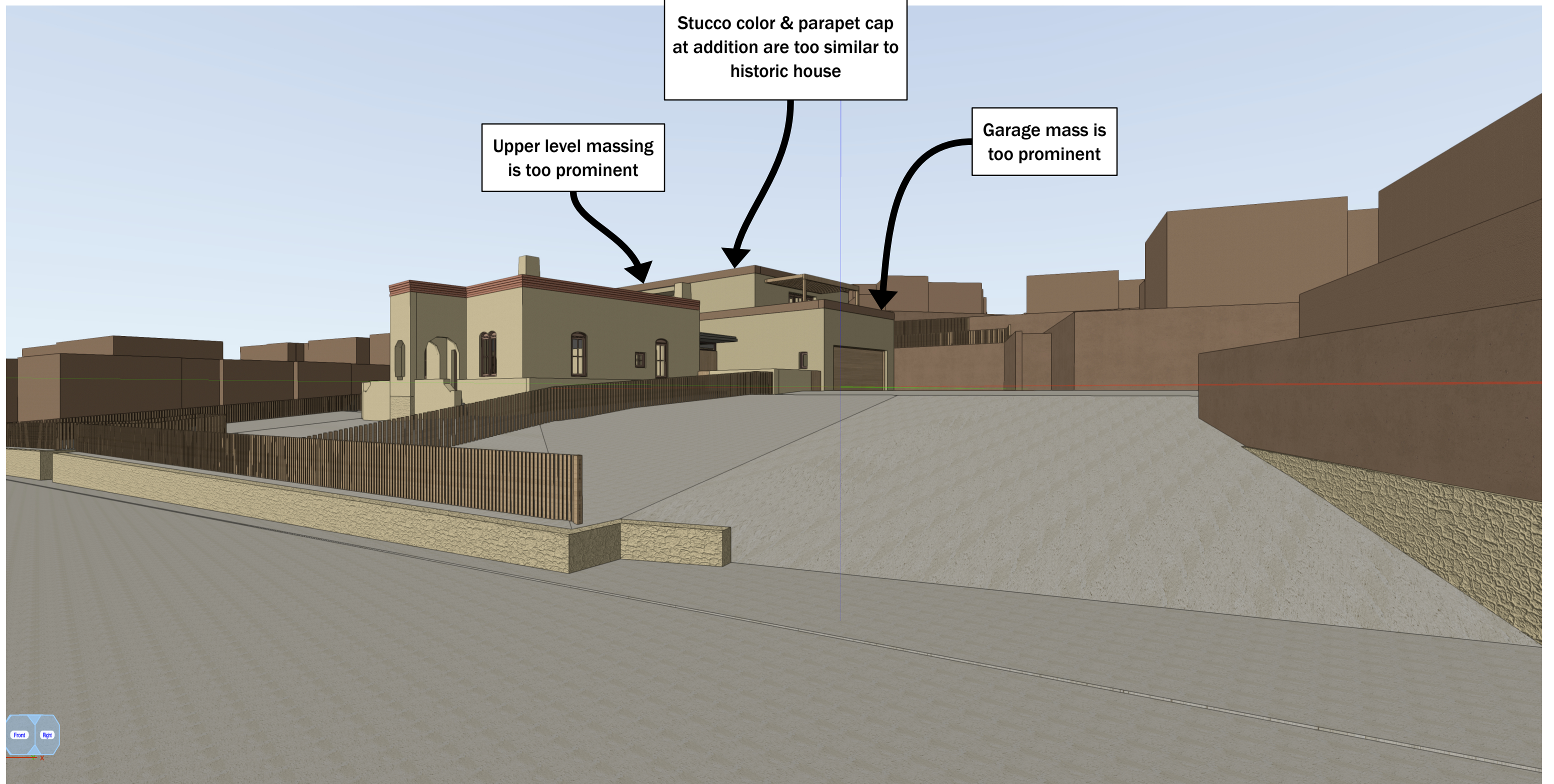
Hillside Context — Stepped, Layered Massing from South



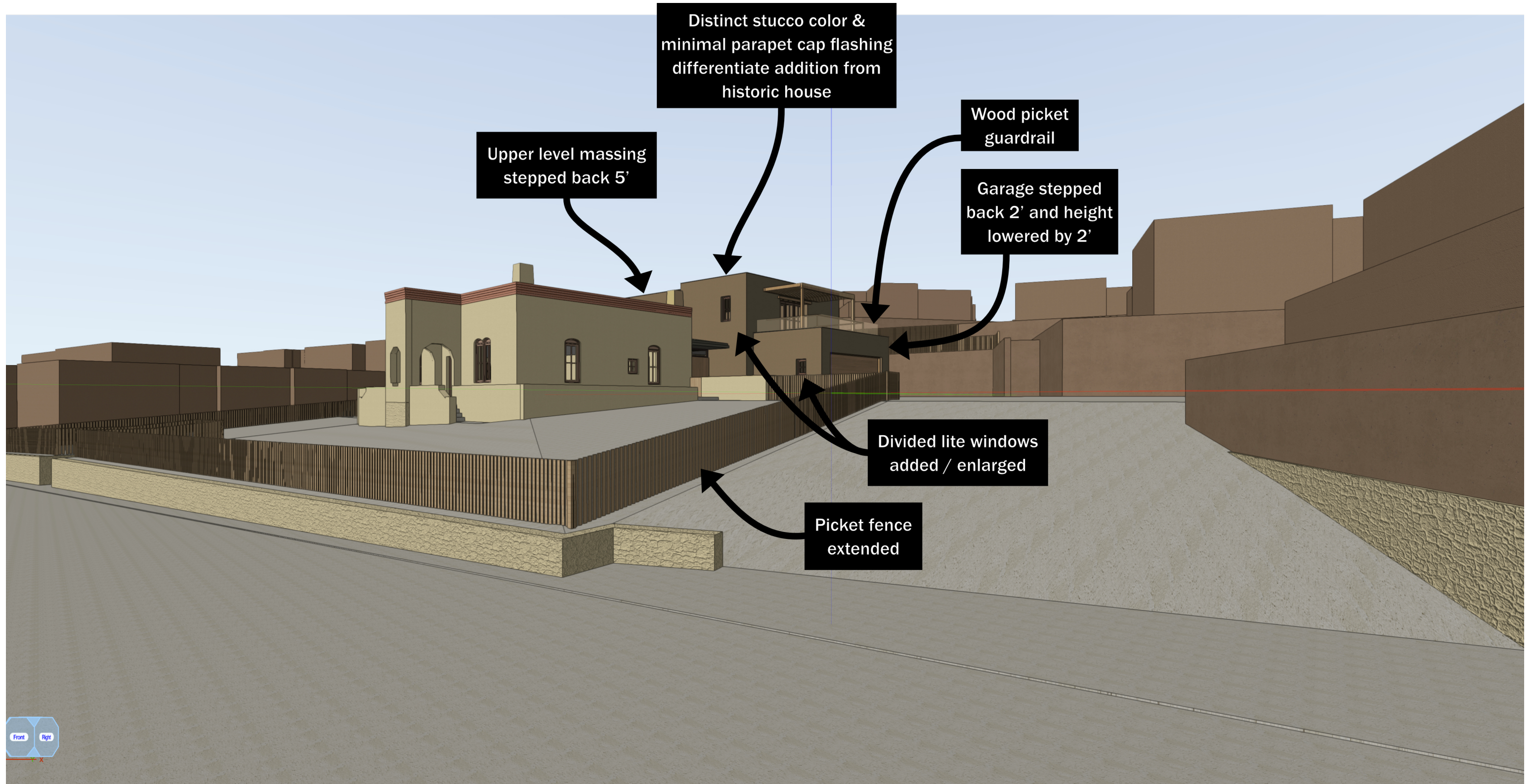
Hillside Context — Existing Condition



Hillside Context — Existing Condition



Previous Proposal - HDRB Comments



Hillside Context — Study