

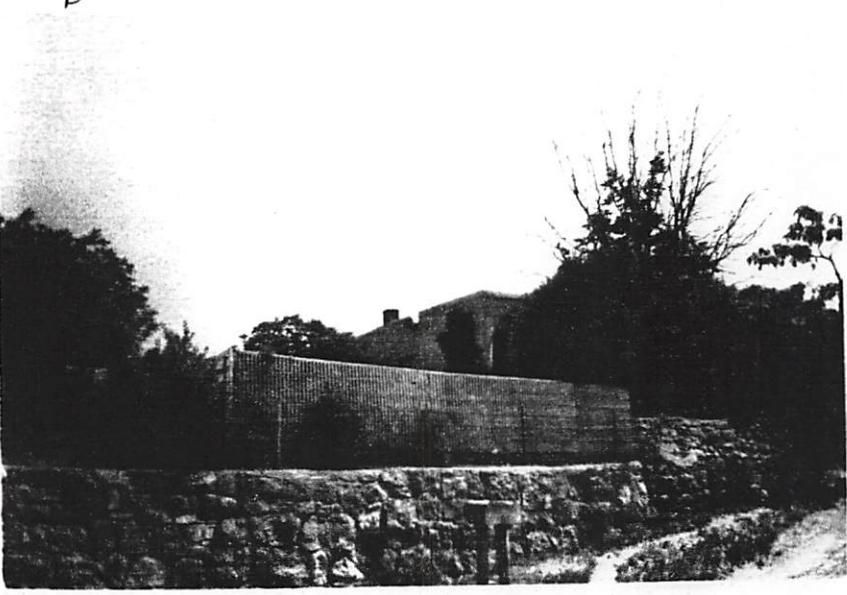
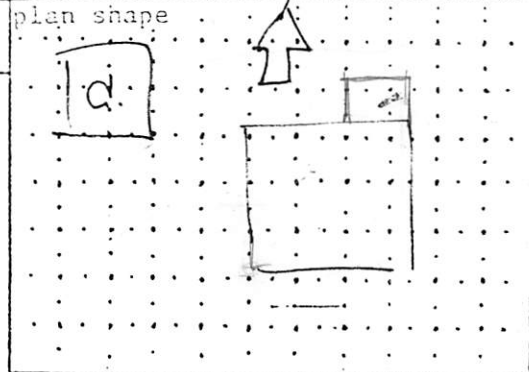
building threatened? yes	surveyed date 6-7-83 by mb	county Santa Fe	ID no. 051600585
-----------------------------	-------------------------------	--------------------	---------------------

field map Santa Fe, New Mexico	number 1	UTM reference easting zone 12 13	northing
-----------------------------------	-------------	-------------------------------------	----------

location description 1295 Cerro Ardo	city/town Santa Fe
	land preservation

building name	legal description Tnsp 17 N R range 10 E W sec 19 SE SE
---------------	--

film roll by mb no. 26	negative nos. 33	loc. of neg. HPB	plan shape
---------------------------	---------------------	---------------------	------------



date of construction Pre 1928	estimate	actual
source Directory		

use	
present	residential
other	
historic	residential
other	

condition	
excellent	X good
fair	deteriorating

style Territorial Pueblo Bungalow	foundation material Not ✓
	wall material/surface Stucco

degree of remodeling	
X minor	moderate major
describe:	

architectural features	
Windows - 6 lite wood casement	
Portal - masonry arch	
Coping stucco over	
Sheet metal awnings	
Masonry chimney	
Large - pueblo remnant	

surroundings Res	
relationship to surroundings	
X similar	not similar

district potential	
yes	no

significance	
eligible	X of none
interest	

components	
wall	stone
hedge	
wire fence	
landmark	
street trees	
stone curbs	
o set back	
separate	

why?	
------	--

associated buildings?	X yes
what type?	

if inventoried, list ID nos.	
------------------------------	--

see back?	yes
-----------	-----

Streetscape

