

City of Santa Fe, New Mexico

Attachment B

B-1: Maps & Figures



Figure 1 – Nueva Acequia Site Plan



Figure 2 – Proposed Future Development Adjacent to Nueva Acequia Apts



Figure 3 – View North on Cam. De Jacobo



Figure 4 – View South on Cam. De Jacobo



Figure 5 – Future San Ignacio Road



Figure 6 – Future Nueva Acequia Site

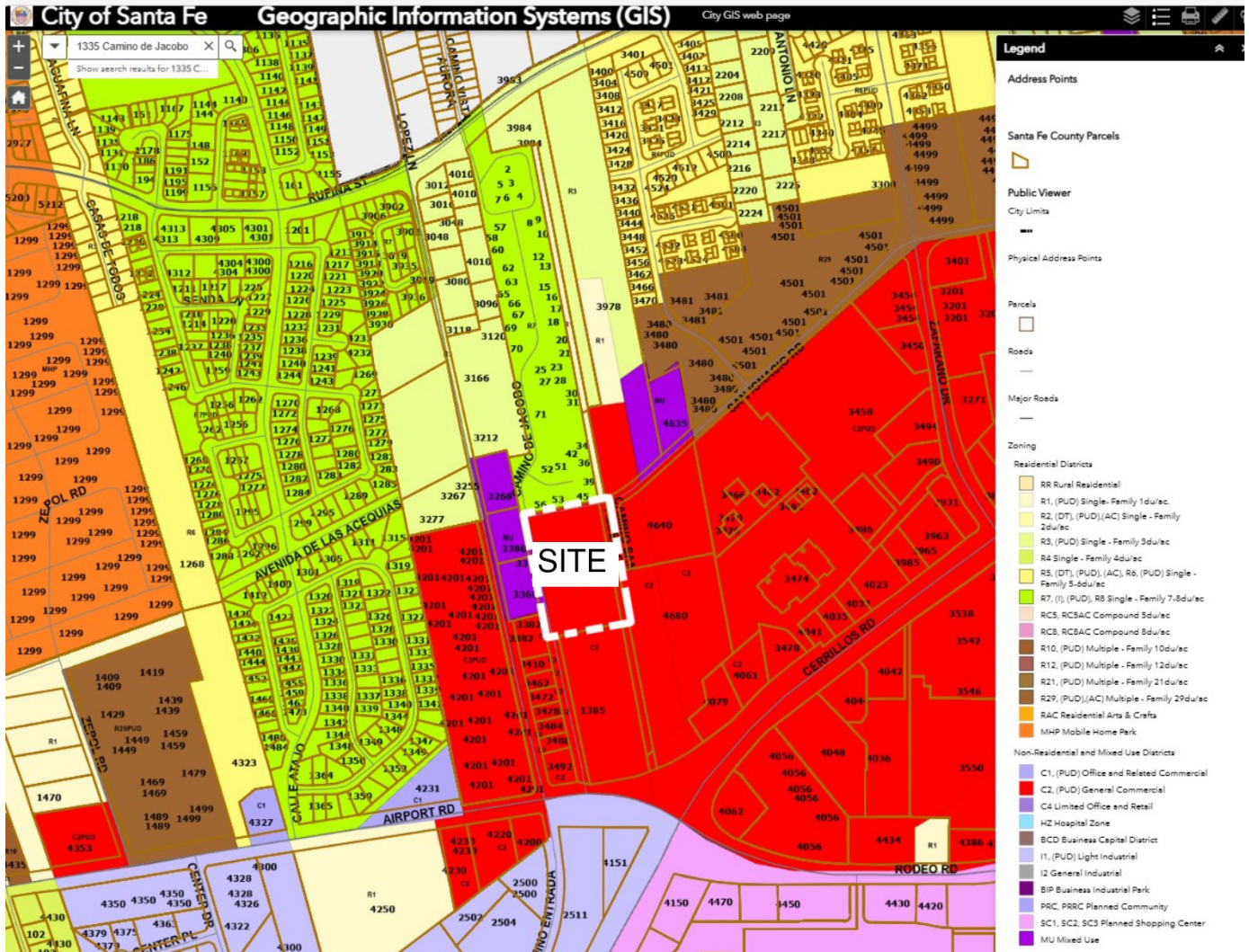


Figure 7 – Current Zoning Map

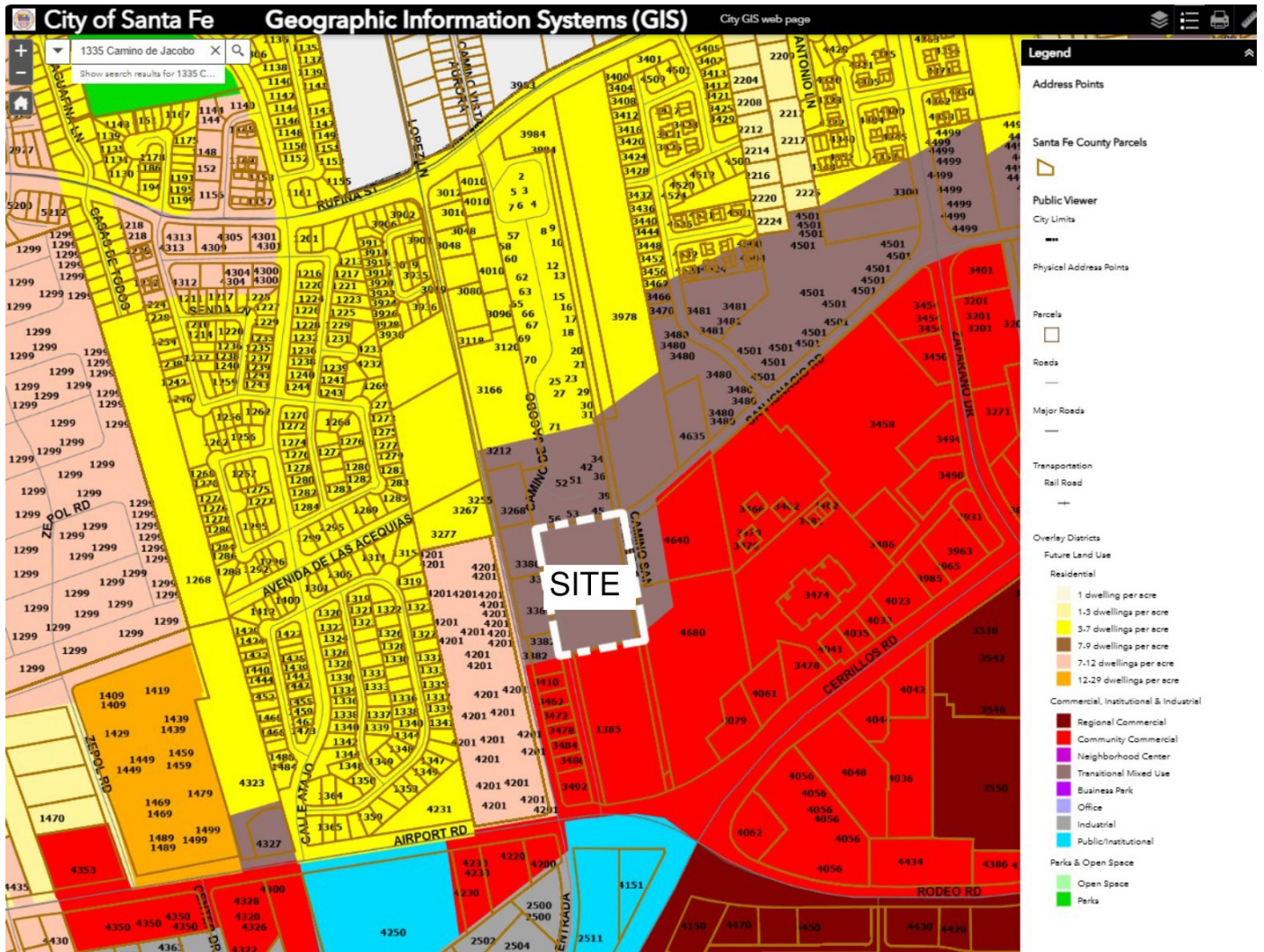


Figure 8 – Future Land Use Map

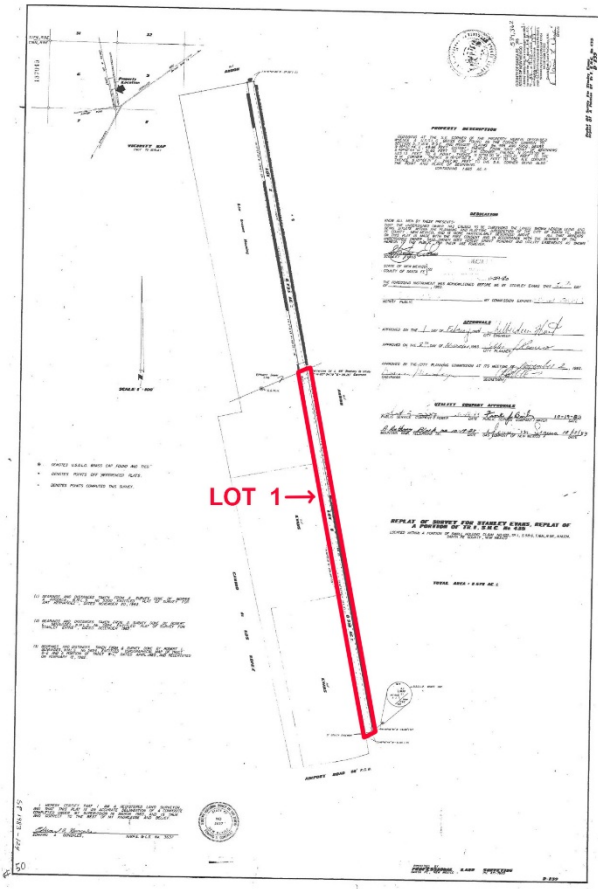


Figure 9 – Legal Lot of Record Lot 1

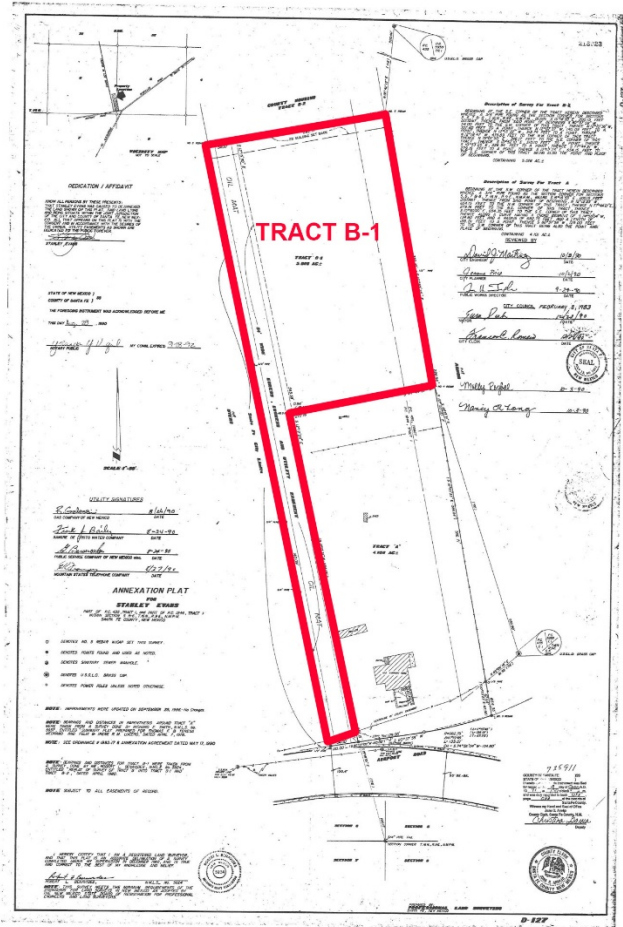


Figure 10 – Legal Lot of Record Tract B-1

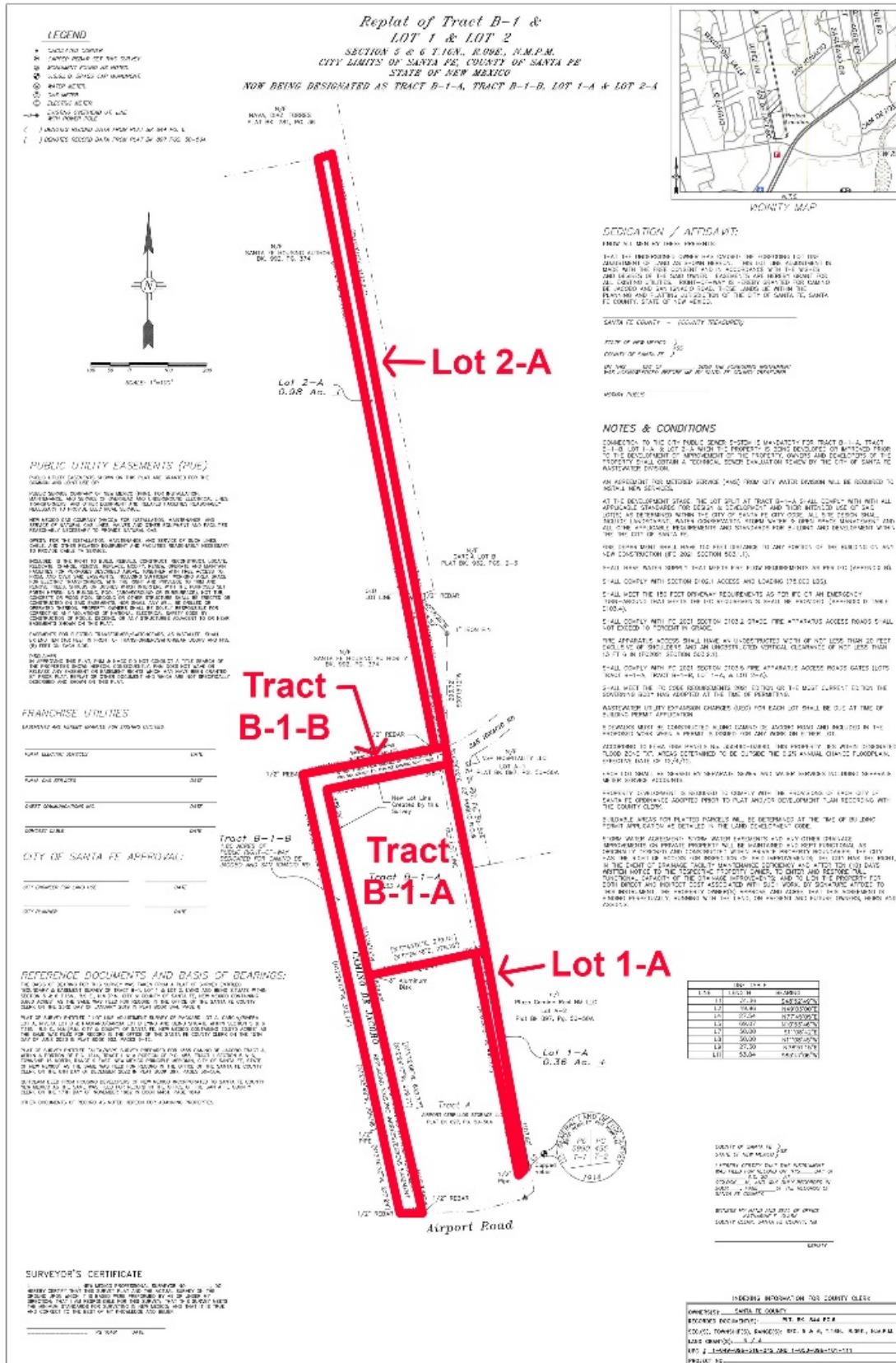


Figure 11 – Proposed New Lot Line Adjustment and Consolidation

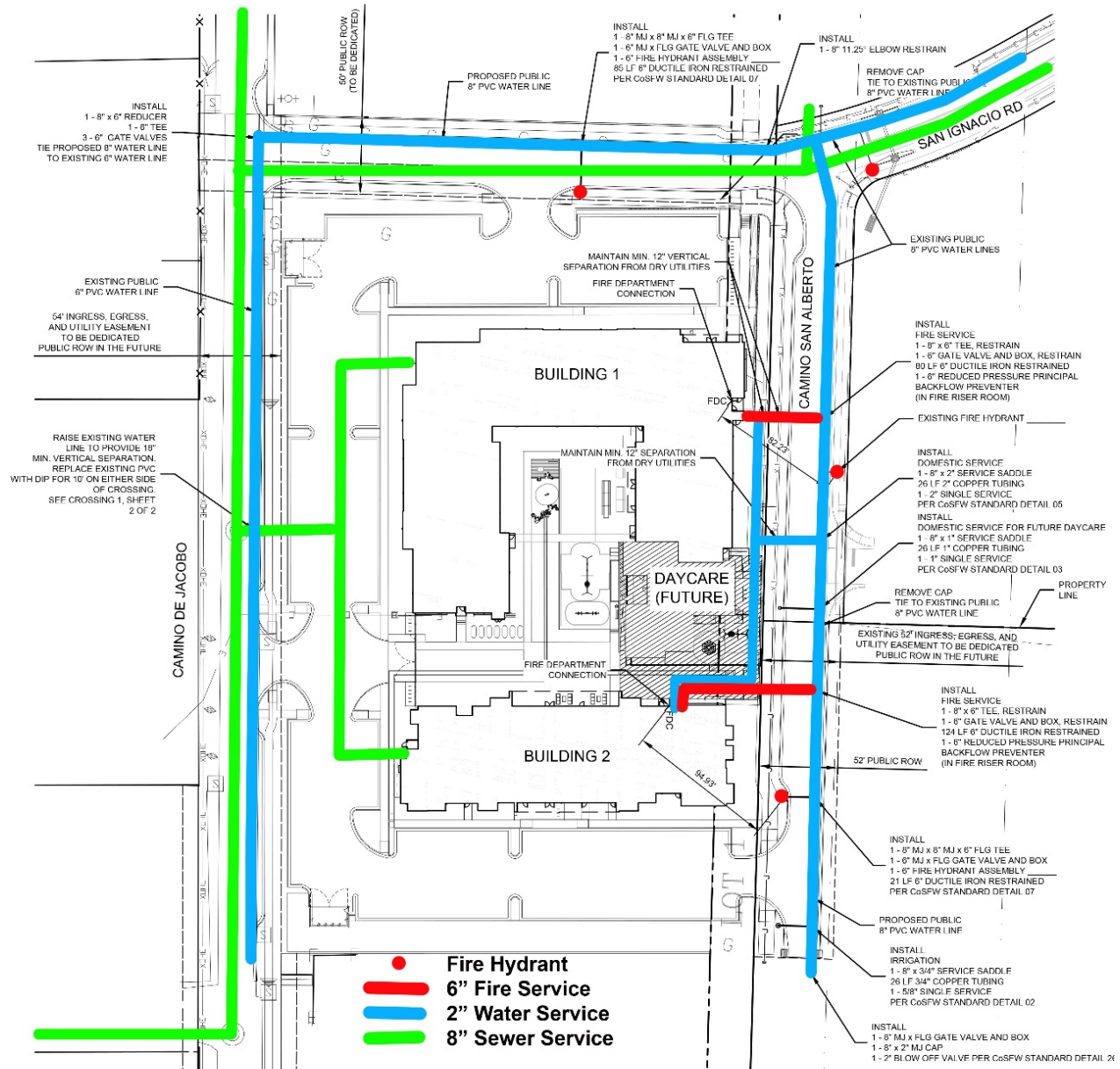


Figure 12 – Utility Plan

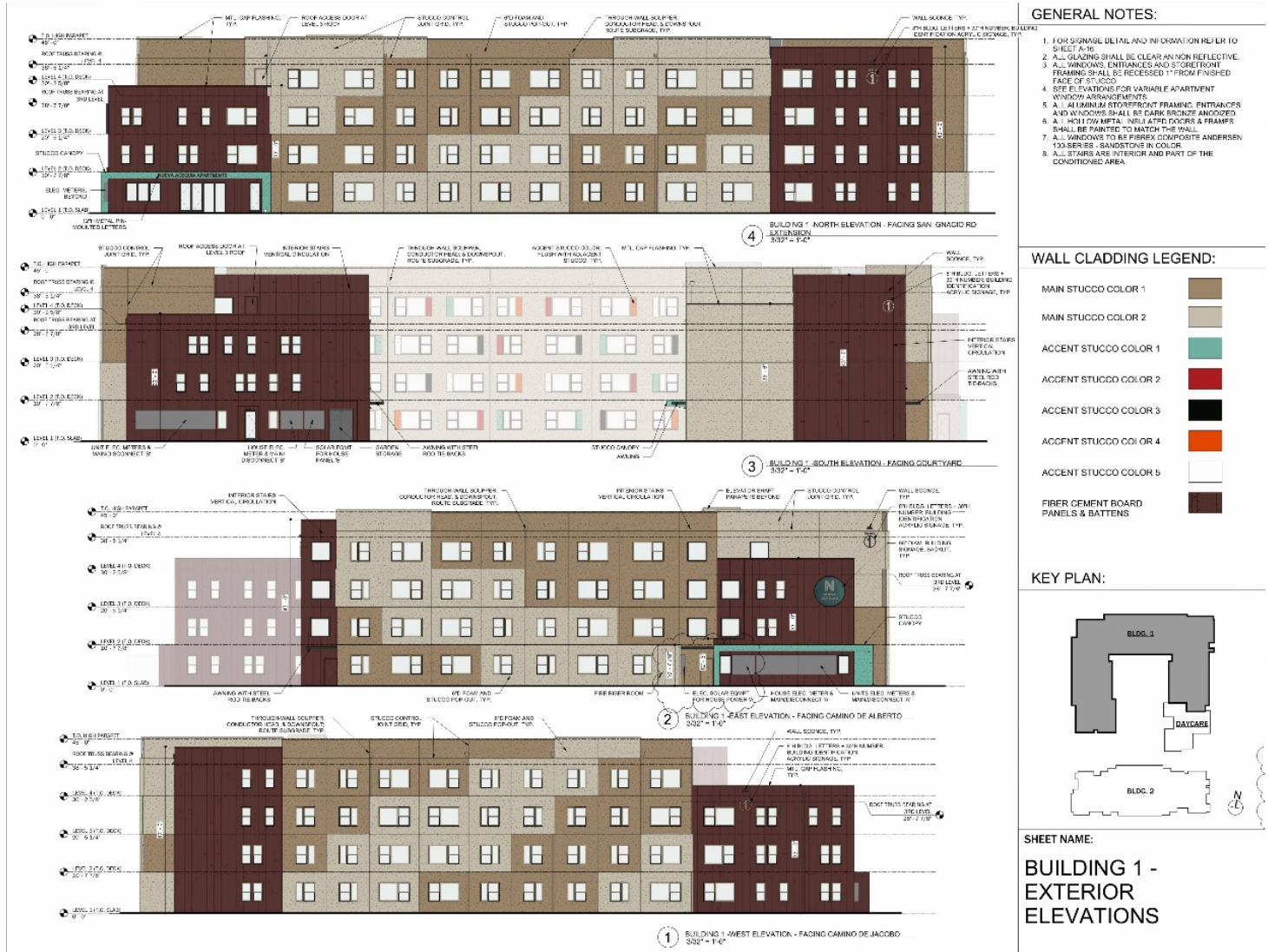


Figure 13 – Building 1 Elevations



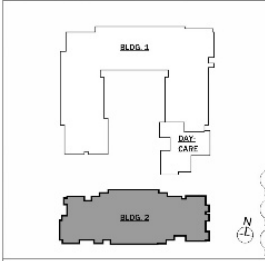
GENERAL NOTES:

1. FOR SIGNALL DETAIL AND INFORMATION REFER TO SHEET A-10.
2. ALL GLAZING SHALL BE C. FAB AIR MESH. FOR THE ALL WINDOWS, ENTRANCES AND STOREFRONT FRAMING SHALL BE RECESSED 1" FROM FINISHED FACE OF STUCCO.
3. ALL ALUMINUM STOREFRONT FRAMING, ENTRANCES AND WINDOWS SHALL BE DARK BRONZE ANODIZED.
4. ALL HOLLOW METAL INSULATED DOORS & FRAMES SHALL BE PAINTED TO MATCH THE WALL.
5. ALL WINDOWS TO BE FIBREX COMPPOSITE ANDERSEN 700-SERIES - SANDTONE IN COLOR.
6. ALL STAIRS ARE INTERIOR AND PART OF THE CONDITIONED AREA.

WALL CLADDING LEGEND:

MAIN STUCCO COLOR 1	[Light Brown Swatch]
MAIN STUCCO COLOR 2	[Medium Brown Swatch]
ACCENT STUCCO COLOR 1	[Teal Swatch]
ACCENT STUCCO COLOR 2	[Red Swatch]
ACCENT STUCCO COLOR 3	[Black Swatch]
ACCENT STUCCO COLOR 4	[Orange Swatch]
ACCENT STUCCO COLOR 5	[White Swatch]
FIBRE CEMENT BOARD PANELS & BATTENS	[Dark Brown Swatch]

KEY PLAN:



SHEET NAME:

BUILDING 2 - EXTERIOR ELEVATIONS

Figure 14 – Building 2 Elevations



Figure 15 – Signage