

City of Santa Fe
Historic Preservation Division
200 Lincoln Avenue

Fernando Garcia
Garcia Home Design
garciahomedesign@gmail.com



RE: 120 Camino De Santiago
Historic District: Downtown & Eastside
Historical Building Status: Not Surveyed
Year Built: 1968

03/30/2026

HPD Staff, submitted with this letter is the Preliminary Application Request and approved Preliminary Zoning Review Worksheet. Also attached are the required plans and photographs.

The site is located south of Fort Marcy Recreation Complex/ Magers Field and a couple of blocks north of the Scottish Rite Center. The site is contained by Bishops Lodge Rd. on the east and Old Taos Hwy. on the west. The visibility from these trees to the site is very minimal to zero. It is not visible from Bishops Lodge Rd. and is only slightly visible from Old Taos Hwy. as you look between two neighboring homes.

The existing residence is +/-1,278 heated sq.ft. with a roof surface of +/-1,844. We are proposing to increase the back yard portal depth which adds 162 sq.ft. for a total proposed roof surface of +/- 2,006 roof sq.ft. There is no proposed increase to heated sq.ft.

The project is described as an exterior remodel with a proposed rear portal extension, built-in BBQ and yard wall around the back yard for privacy. The exterior remodel consists of; window replacement, re-stucco, re-roof, new metal drip-edge around existing roof overhangs, replace the exterior doors (except at storage), remove the outdoor cabinets in the carport, increase the width of the mechanical room and remove the window awning.

The proposed replacement windows are to be Andersen Windows, color to be Dark Bronze. Size and operation per the plans and window schedule.

The proposed re-stucco is to be done with a cementitious stucco system. The color proposed is Cottonwood from Sto with a Light Sand Finish.

The proposed re-roof is to be a modified bitumen roof with tan granules, typical. The existing roof surface is +/- 1,844 sq.ft., we are proposing to add 162 sq.ft. with the portal extension.

The existing carport cabinets will be removed. These cabinets are visible from the street and take away from the curb appeal.

The existing door from kitchen to carport will be removed. Which allows for a larger mechanical room and cleans up the massing in that area. The proposed addition results in an increase of 16 sq.ft.

The existing window awning visible from the street is to be removed. It is green, made of fabric and is unsightly.

There is no evidence of prior alterations.

Thank you for your time and attention. Sincerely, Fernando Garcia.

City of Santa Fe
Historic Preservation Division
200 Lincoln Avenue

Fernando Garcia
Garcia Home Design
garciahomedesign@gmail.com



RE: 120 Camino De Santiago
Historic District: Downtown & Eastside
Historical Building Status: Not Surveyed
Year Built: 1968

03/30/2026

HPD Staff, with this letter we are addressing 3 exception criteria for stucco and windows.

Stucco: Cementitious w/ a Light Sand Finish in the color Cottonwood

- (i) Do not damage the character of the district.

Response: We feel our request is reasonable and won't damage the character of the district. We understand the importance of preserving the historical aspect and integrity of the district. We are requesting a light sand finish because there are other homes in the community which have been recently re-stuccoed with a light sand finish. We are requesting Cottonwood because we feel the color blends well with the environment, with the proposed window color and drip-edge.

- (ii) Are required to prevent a hardship to the applicant or an injury to the public welfare.

Response: Our request for a light sand stucco finish in the color Cottonwood doesn't pose a hardship or injury to the public welfare.

- (iii) Strengthen the unique heterogeneous character of the City by providing a full range of design options to ensure that residents can continue to reside within the historic districts:

Response: We feel our request of a light sand stucco finish is expected in the City of Santa Fe. A sand finish is more appealing than other textures. We feel a sand finish is truer to the character of Santa Fe homes. The color Cottonwood is evident throughout the City and enhances the character.

Windows: Andersen Windows in the color Dark Bronze, Casement windows w/ some divided light

- (i) Do not damage the character of the district.

Response: We feel our request is in-line with the expectations of the Historic District. We plan on matching the look and style of the windows on the primary façade (west elevation). Windows will be casement type so the window screens are on the interior. The light divisions will match the existing window but only on the primary façade. The light divisions for the windows on the side property will meet the 30" diagonal rule (north and south elevations). We are not proposing light divisions on the windows in the back yard (east elevation).

- (ii) Are required to prevent a hardship to the applicant or an injury to the public welfare.

Response: Our request for window replacement per the building elevations and window schedule don't pose a hardship or injury to the public welfare. Our request meets the Historic guidelines for window type and divided lights.

- (iii) Strengthen the unique heterogeneous character of the City by providing a full range of design options to ensure that residents can continue to reside within the historic districts:

Response: Our request for window replacement meets the Historic guidelines and is in-line with our

window assessment. The style and layout of windows proposed enhances the structures character as the existing windows are a conglomerate of different types of windows and sizes. The proposed windows add a cleaner look which is more appealing and in-line with the Historic Districts expectations.

Thank you for your time and attention. Sincerely, Fernando Garcia.



Submittal Data Sheet

2.0-Ton, 3-Port Heat Pump, Ductless ODU

3MXS24WMVJU9

FEATURES

- High-efficiency inverter driven swing compressor

BENEFITS

- 12 Year limited parts warranty with online registration





Submittal Data Sheet

2.0-Ton, 3-Port Heat Pump, Ductless ODU
3MXS24WMVJU9

EFFICIENCY					PERFORMANCE			
	SEER2	EER2	HSPF2	COP	COOLING:		HEATING:	
Non-Ducted:	18.00	11.70	9.70	4.40	Rated (Btu/hr):	24,000	Rated (Btu/hr):	24,000
Ducted:	14.90	8.50	7.80	3.00	Operating Range:	14°F - 115°F	Operating Range:	5°F - 60°F
Mixed:	16.45	10.10	8.75	3.70	Rated Cooling Conditions:		Rated Heating Conditions:	
					Indoor (°F DB/DB): 80 / 67 Ambient (°F DB/WB): 95 / 75		Indoor (°F DB/WB): 70 / 60 Ambient (°F DB/WB): 47 / 43	

ELECTRICAL			PIPING			
Power Supply (V/Hz/Ph): *See Engineering Manuals for other voltages.	*208-230 / 60 / 1		Max. System Piping Length: (feet):	230	Gas Conn. (inch):	3/8
System MCA: (Min.circuit amps)	18.1		Max. Interunit Piping Length: (feet):	230	Liquid Conn. (inch):	1/4
System MFA: (Max.fuse amps)	25.0		Max. Height Difference IDU to ODU (feet):	49.25	Drain Conn. (inch):	5/8
Compressor RLA: (Rated load amps)	15.5		Max. Height Difference IDU to IDU (feet):	82		
Outdoor fan motor FLA: (Full load amps)	0.3		Refrigerant Pre-Charged Pipe Length (ft):	131.2		
Outdoor fan motor W: (Rated output watts)	50.0					

SPECIFICATIONS					
Compressor Type:	Swing		Compressor Stage:	Inverter	
Refrigerant Type:			Refrigerant Oil:	PVE (FVC50K)	
Factory Charge (Lbs):	6.17		Additional Refrigerant Charge (Ozs/ft):	0.21	
COOLING - Airflow Rate (cfm):			HEATING - Airflow Rate (cfm):		
High:	2,094		High:	2,094	
Med:	2,094		Med:	1,979	
Low:	1,979		Low:	1,118	
Sound Level (dBA):	52		Sound Level (dBA):	54	
Dimensions (HxWxD) (in):	28-15/16 x 34-1/4 x 12-5/8		Net Weight (lb):	140	



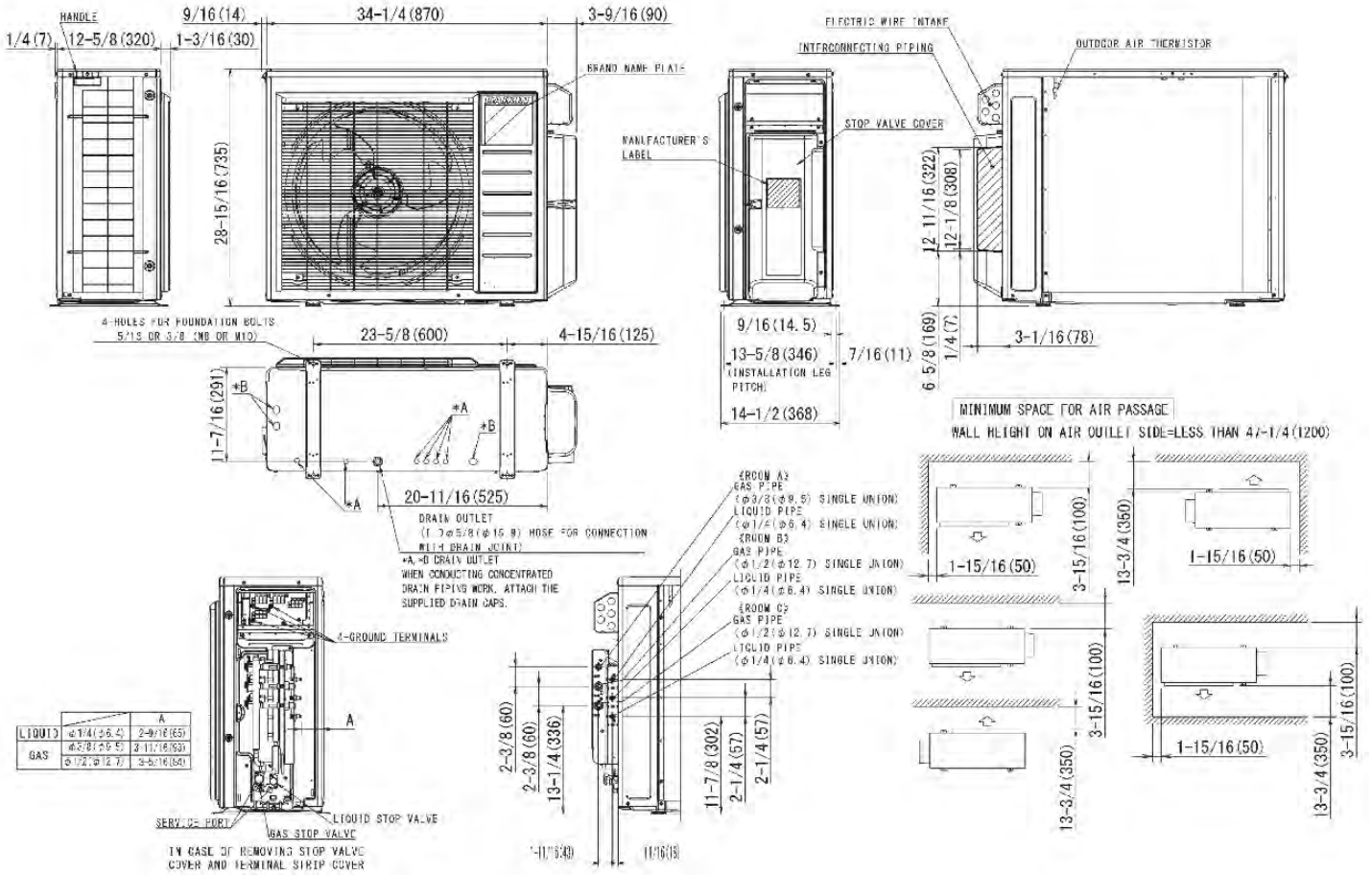
Submittal Data Sheet

2.0-Ton, 3-Port Heat Pump, Ductless ODU

3MXS24WMVJU9

DIMENSIONAL DRAWING

3MXS24WMVJU9, 3MXL24WMVJU9, 3MXLH24WVJU9





Submittal Data Sheet

2.0-Ton, 3-Port Heat Pump, Ductless ODU

3MXS24WMVJU9

ACCESSORIES

PART NUMBER	DESCRIPTION	INCLUDED
-------------	-------------	----------

DACA-WB-3	Powder-Coated Wall-Mounted Bracket	No
KEH063A4EA	Bml LRg Drain Pan Heater Rev A	No
KKG063A42	Back protection wire net	No
KKG063A43	Side protection wire net (18 & 24)	No
KPS063A41	Snow hood (intake side plate) (15, 18 & 24)	No
KPS063A44	Snow hood (intake rear plate) (15,18 & 24)	No
KPS063A47	Snow hood (outlet) (15, 18 & 24)	No
KPW063B4	Air direction adjustment grille	No
RAQAHLGD1	Rear Coil Guard BML	No



SOLAR Industries, Inc.

**22 1/4 in x 46 1/4 in. Fixed Curb Mount
Skylight with Dual Pane Tempered HP Low-E
Over Clear Laminated Glass**

Dimensions

Product Depth (in.)	27 in
Product Height (in.)	3.375 in
Product Width (in.)	51 in
Rough Opening Height (in.)	46.25 in
Rough Opening Width (in.)	22.25 in

Details

Cladding Type	Aluminum
Exterior Color/Finish Family	Bronze
Features	No Additional Features
Frame Material	Aluminum
Glass Type	Laminated Glass
Included	No Additional Items Included
Interior Color/Finish Family	Bronze
Minimum Roof Pitch (degrees)	0
Product Weight (lb.)	51 lb
Returnable	90-Day
Skylight Mounting Type	Curb Mount
Solar Heat Gain Coefficient	.26
U-Factor	.50

Warranty / Certifications

Energy Star Qualified	Not Qualified
Manufacturer Warranty	5 Year Warranty

100 SERIES



**A MODERN LOOK
THAT'S EASY ON THE BUDGET.**

CONTENTS

Performance	2
Durability	3
Fibrex® Material	4-5
Window & Door Types	6-7
New Construction, Remodeling & Replacement	9
Exterior & Interior Colors	10
Hardware	11
Glass Options	12
Grille & Insect Screen Options	13
Build Bigger Views	14

100 SERIES WINDOWS

Windows Overview	15
Casement Windows	18
Awning Windows	25
Single-Hung Windows	30
Gliding Windows	52
Picture, Transom & Specialty Windows	66

100 SERIES PATIO DOORS

Patio Doors Overview	91
Gliding Patio Doors	93
Patio Door Sidelights & Transoms	95

Combination Designs	99
Product Performance	102
Installation Accessories & Information	109
Sustainability	112

For warranty information, visit andersenwindows.com/warranty.



Andersen Corporation, including its subsidiaries, has been named a 2021 ENERGY STAR Partner of the Year – Sustained Excellence Award winner, the highest honor given by ENERGY STAR, for continued leadership in protecting the environment through superior energy efficiency achievements.

*ENERGY STAR® is a registered trademark of the U.S. Environmental Protection Agency.

FIBREX® MATERIAL

Developed by Andersen, Fibrex material is a revolutionary structural composite material that blends the very best attributes of vinyl and wood. Fibrex material saves on natural resources because it's composed of 40% reclaimed wood fiber by weight. Special polymer formulations surround and fill each wood fiber, enabling top performance. The result is a material that provides uncommon value and enhances the quality of any project. In use for over two decades in Andersen® products, Fibrex material has proven its strength and durability in all types of climates.

REVOLUTIONARY BUILDING MATERIAL

- Twice as strong as vinyl so weathertight seals stay weathertight
- Blocks thermal transfer nearly 700 times better than aluminum to help reduce heating and cooling bills
- Retains its stability and rigidity in all climates for exceptional durability
- Offers superior scratch resistance compared to painted vinyl*

ENVIRONMENTALLY RESPONSIBLE

- Since Andersen developed the highly sustainable Fibrex material, reuse of waste wood fiber has prevented the harvesting of nearly 90 million board feet of timber
- 100 Series products can help builders earn LEED® points in three key categories: Energy & Atmosphere, Materials & Resources and Indoor Environmental Quality
- 100 Series products meet or exceed California Section 01350 Specification, a California indoor emission standard — one of the toughest in the country
- Like all Andersen products, 100 Series products are designed to last** and help reduce future waste streams



See how Andersen created Fibrex material at andersenwindows.com/fibrex.



*Visit andersenwindows.com/warranty for details.

**When tested against five leading competitors' painted vinyl window products.

EXTERIOR & INTERIOR COLORS

100 Series windows and patio doors come in five exterior colors, including dark bronze and black – colors that are darker and richer than those of most vinyl windows. The interiors feature a premium matte finish for an attractive appearance.

EXTERIOR COLORS



INTERIOR COLORS



*Products with Sandtone, dark bronze and black interiors have matching exteriors. Printing limitations prevent exact duplication of colors. See your Andersen supplier for actual color samples.





HARDWARE

Casement & Awning Windows



Antique Brass | Black | Dark Bronze
Sandtone | Satin Nickel | White

Folding handles avoid interference with window treatments.

Single-Hung & Gliding Windows



Standard Lock



Optional Lift/Pull

Hardware color matches the window's interior color. Shown in white.



Optional Metal Slim Line Lock

Antique Brass | Black | **Dark Bronze**
Sandtone | Satin Nickel | White

Both lock styles automatically engage when window is closed.

Bold name denotes finish shown.

Gliding Patio Doors



Standard Handle

TULSA

Exterior handle matches the door's exterior color. Interior handle matches the door's interior color. Dark bronze exterior and white interior shown.

Optional Handle

AFTON

Antique Brass | Black
Bright Brass | **Satin Nickel**

Optional auxiliary foot lock is available to secure the gliding panel and provides an extra measure of security when the door is in a locked position. See page 92.

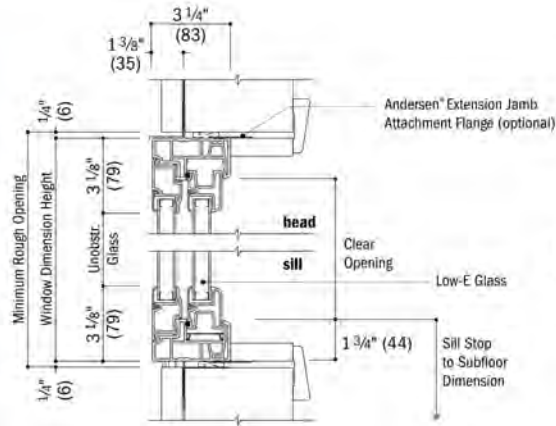
Bold name denotes finish shown.

GLIDING WINDOWS

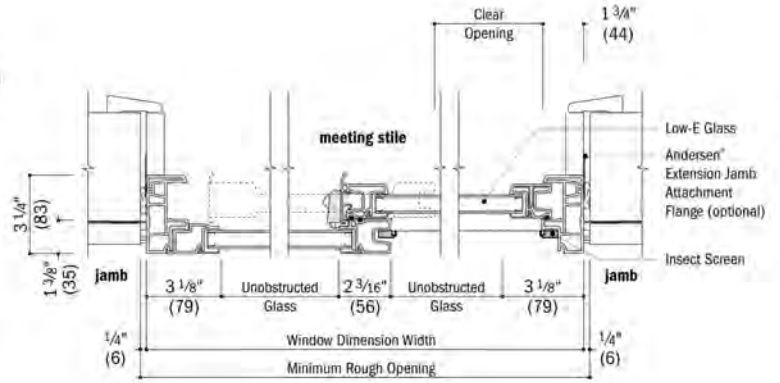
Gliding Window Details – New Construction

Scale 1 1/2" (38) = 1'-0" (305) – 1:8

1 3/8" flange setback

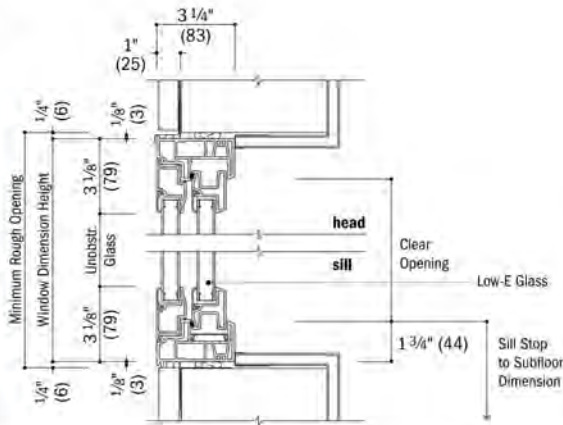


Vertical Section

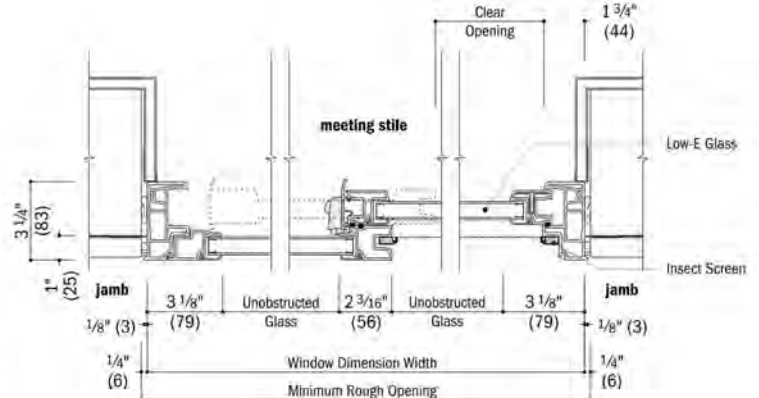


Horizontal Section

1" flange setback with stucco key

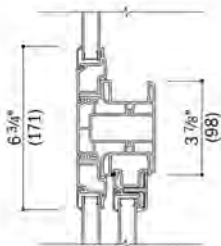


Vertical Section
Stucco Exterior



Horizontal Section
Stucco Exterior

Integral



Vertical Section
Picture Over Gliding

See pages 84-87 for joining details.

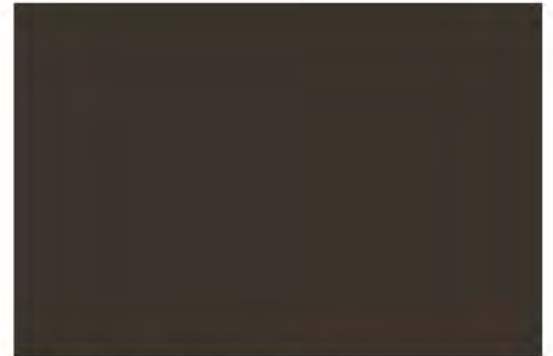
- Drip cap is required to complete window installation as shown but may not be included with the window. Use of drip cap is recommended for proper installation.
- Light-colored areas are parts included with window. Dark-colored areas are additional Andersen® parts required to complete window assembly as shown.
- **Minimum rough openings may need to be increased to allow for use of building wraps, flashing, sill panning, brackets, fasteners or other items. See installation information on page 110.**
- Details are for illustration only and are not intended to represent product installation methods or materials. Refer to product installation instructions at andersenwindows.com.
- Dimensions in parentheses are in millimeters.



Windows:
Andersen Windows
Dark Bronze



Stucco:
Sto - Southwest Color
Tumbleweed



Drip Edge & Metal Coping
ABC Supply
Dark Bronze



Roofing:
Modified Bitumen Roof
Tan



Wood Stain:
Natural Stain on Pine
(matches existing)

PROJECT INFORMATION

OWNER:
SERGIO & VERONICA GARCIA
120 CAMINO SANTIAGO
SANTA FE, NM 87501

DESIGNER:
FERNANDO GARCIA
GARCIAHOMEDSIGN@GMAIL.COM

BUILDER:
MAG CONSTRUCTION
MIGUEL GARCIA

PROJECT SUMMARY:
RE-ROOF, WINDOW & DOOR REPLACEMENT, PORTAL ROOF EXTENSION,
NEW DRIP EDGE & RE-STUCCO EXISTING HOUSE.

PROPOSED AREAS (SQ.FT.)
GROSS HEATED: 0
GROSS UN-HEATED: 0
PORTALS: 162
ROOF: 162

EXISTING AREAS (SQ.FT.)
GROSS HEATED: ±1,278
CARPORT: ±163
PORTALS: ±0
ROOF: ±1,844

ZONING ANALYSIS

ZONING: RESIDENTIAL R-29 (PUD)

DISTRICTS:
- SUBURBAN ARCHAEOLOGICAL REVIEW DISTRICT.
- DOWNTOWN AND EASTSIDE HISTORIC DISTRICT.
*HISTORICAL BUILDING STATUS: NOT SURVEYED.

LOT SIZE: 0.21 ACRES/ 9,147.6 SQ.FT.

MAXIMUM HEIGHT OF STRUCTURES: 24'
WITHIN 10' OF A SIDE OR REAR PROPERTY LINE, NO POINT ON A
STRUCTURE SHALL BE HIGHER THAN 14' ABOVE THE FINISHED GRADE AT THE
CLOSEST POINT ON THE PERIMETER OF THE STRUCTURE. WITHIN 15' OF A
SIDE OR REAR PROPERTY LINE, NO POINT ON A STRUCTURE SHALL BE
HIGHER THAN 24' ABOVE FINISHED GRADE AT THE CLOSEST POINT ON THE
PERIMETER OF THE STRUCTURE.

MINIMUM YARD REQUIREMENTS:
FRONT: 7'
SIDE: 5'
REAR: 15' OR 20% OF THE AVERAGE DEPTH DIMENSION OF LOT, WHICHEVER
IS LESS PREVAILS.

MAXIMUM LOT COVERAGE:
40%, MAY INCREASE TO 50% IF PRIVATE OPEN SPACE IS PROVIDED PER
SECTION 14-7.5(C)(1).
PROPOSED ROOF SQ.FT. = (162)
EXISTING ROOF SQ.FT. = (±1,844)
TOTAL ROOF SQ.FT. PROPOSED = (2,006)
LOT SQ.FT. = (9,147.6)
TOTAL PROPOSED LOT COVERAGE = 2,006 (ROOF) / 9,147.6 (LOT) =
0.219 => *22% LOT COVERAGE*

MINIMUM REQUIRED OPEN SPACE: NONE

MAP & DIRECTIONS

FROM PASEO DE PERALTA HEAD NORTH ON OLD TAOS HWY., FOLLOW FOR
ABOUT 350 FEET AND TAKE A RIGHT ONTO CAMINO SANTIAGO. FOLLOW FOR
200 FEET AND THE LOT IS ON YOUR RIGHT.



GARCIA RESIDENCE REMODEL

120 CAMINO SANTIAGO
SANTA FE, NM 87501

REVISION: HISTORIC PRESERVATION SUBMITTAL | DATE: 3/17/2026

CONTEXT SITE PLAN

A0-0

GENERAL NOTES

* SITE PLAN INFORMATION TAKE FROM SURVEY PLAT REGISTERED 02/25/2025.
DOCUMENT No. 2053412.
* PLAZA DEL MONTE SUBDIVISION.

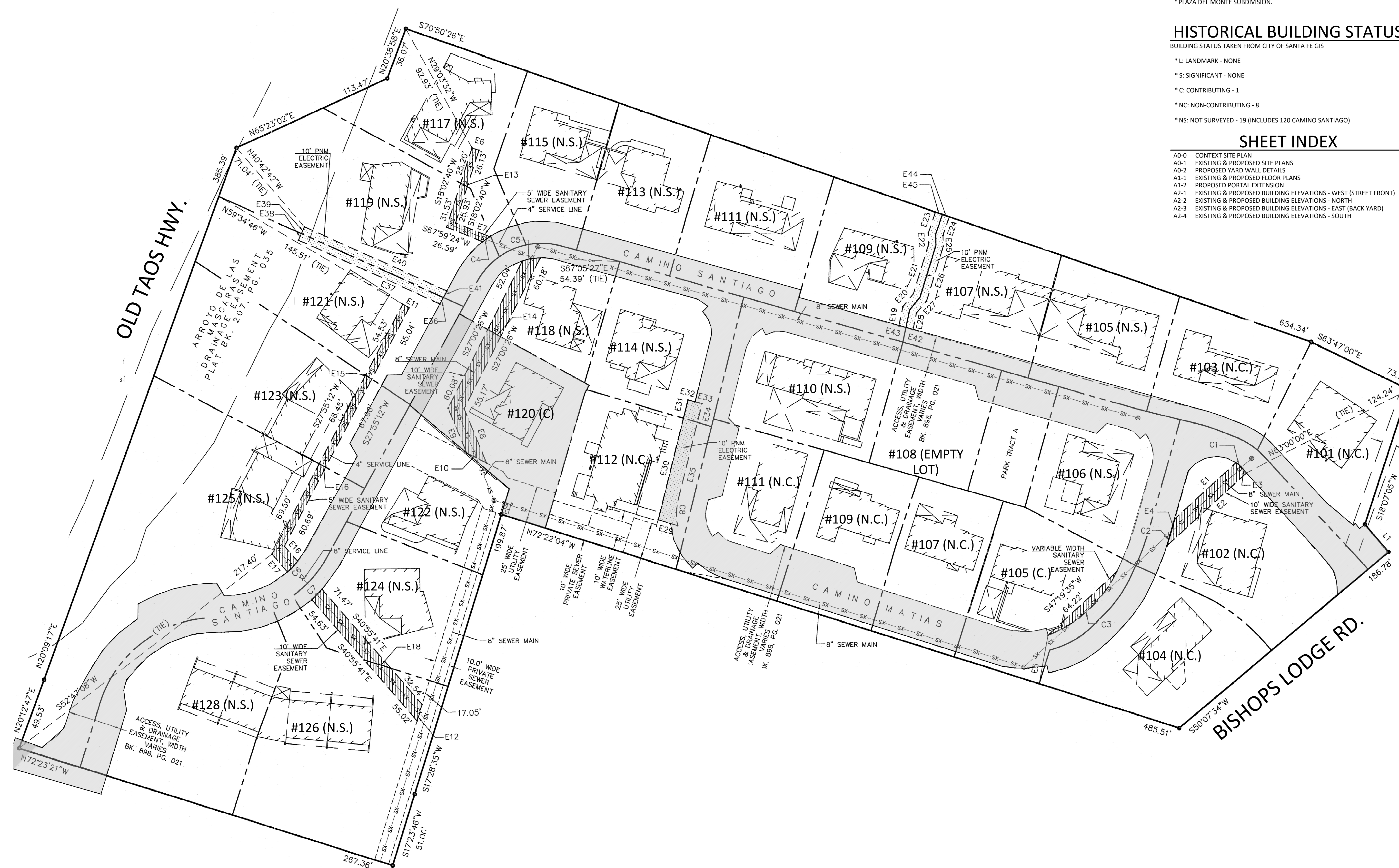
HISTORICAL BUILDING STATUS

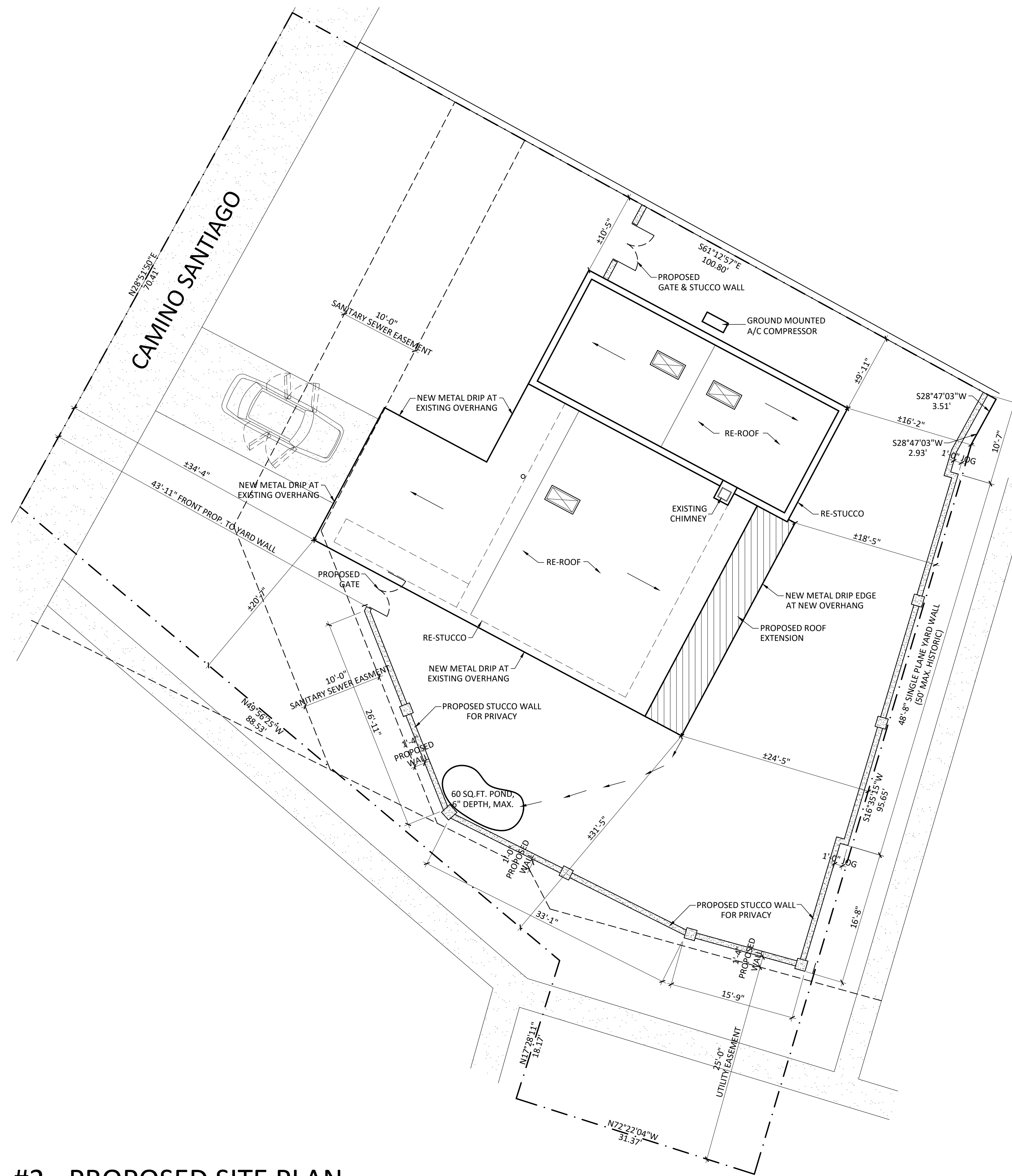
BUILDING STATUS TAKEN FROM CITY OF SANTA FE GIS

- * L: LANDMARK - NONE
- * S: SIGNIFICANT - NONE
- * C: CONTRIBUTING - 1
- * NC: NON-CONTRIBUTING - 8
- * NS: NOT SURVEYED - 19 (INCLUDES 120 CAMINO SANTIAGO)

SHEET INDEX

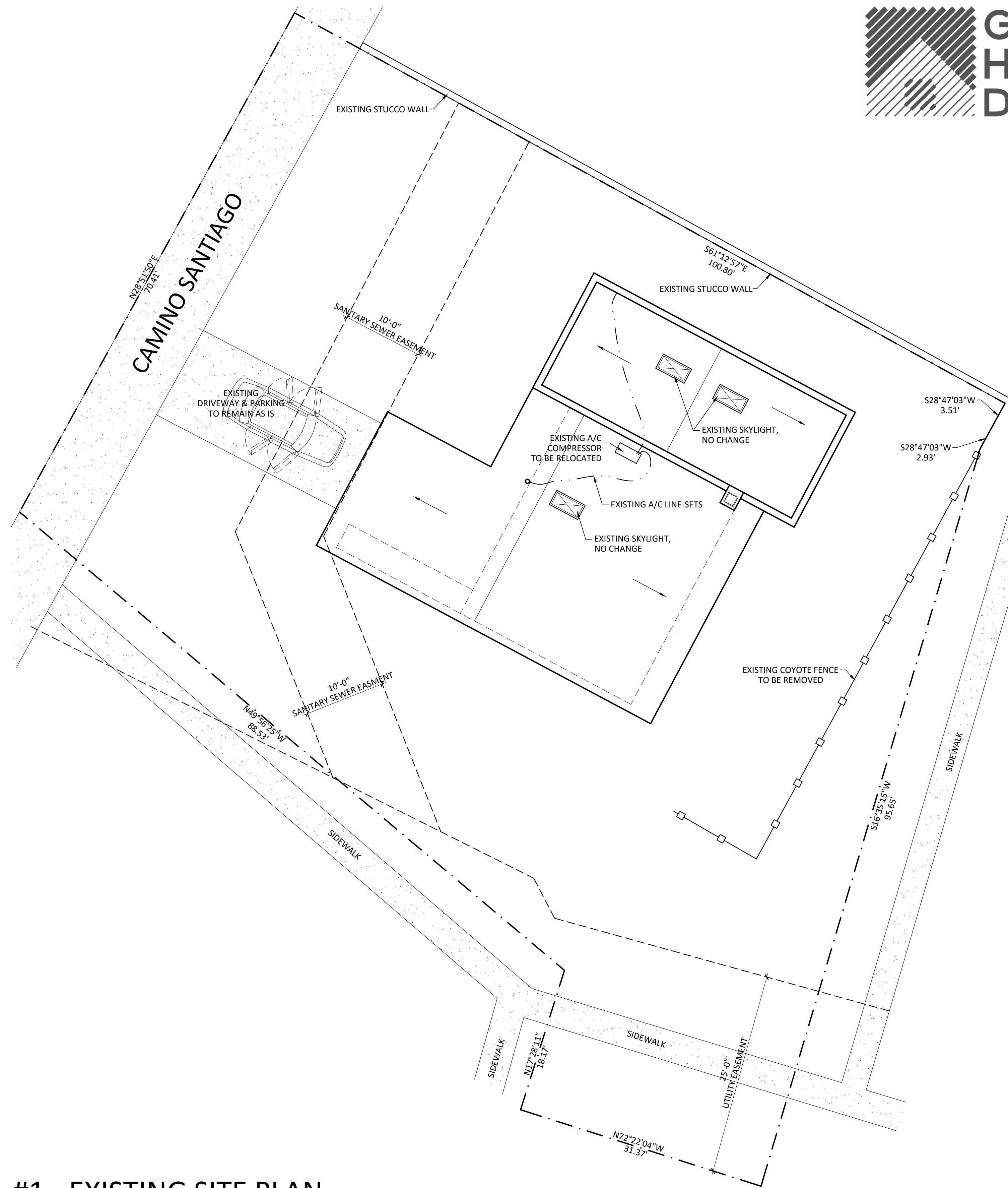
- A0-0 CONTEXT SITE PLAN
- A0-1 EXISTING & PROPOSED SITE PLANS
- A0-2 PROPOSED YARD WALL DETAILS
- A1-1 EXISTING & PROPOSED FLOOR PLANS
- A1-2 PROPOSED PORTAL EXTENSION
- A2-1 EXISTING & PROPOSED BUILDING ELEVATIONS - WEST (STREET FRONT)
- A2-2 EXISTING & PROPOSED BUILDING ELEVATIONS - NORTH
- A2-3 EXISTING & PROPOSED BUILDING ELEVATIONS - EAST (BACK YARD)
- A2-4 EXISTING & PROPOSED BUILDING ELEVATIONS - SOUTH





#2 - PROPOSED SITE PLAN

SCALE: 1/8" = 1'-0"



#1 - EXISTING SITE PLAN

SCALE: 1/8" = 1'-0"

GENERAL NOTES

- * NEW HIGH EFFICIENCY REPLACEMENT WINDOWS AS SHOWN. WINDOW COLOR PER WINDOW SCHEDULE.
- * RE-ROOF OF THE ENTIRE HOME. ROOF TYPE TO BE MODIFIED BITUMEN, GRANULES TO BE TAN, TYPICAL.
- * RE-STUCCO OF THE ENTIRE HOME. PROPOSED STUCCO COLOR TO BE COTTONWOOD WITH A LIGHT SAND FINISH.
- * NEW METAL DRIP EDGE AT OVERHANGS. COLOR TO BE DARK BRONZE.
- * RE-STAIN EXTERIOR WOOD WITH A NATURAL STAIN.

WATER HARVESTING

*PER CITY OF SANTA FE CODE; CHAPTER 14-8.2(E)(2) MINIMUM STANDARDS; DISCHARGE STANDARDS: "THE MINIMUM VOLUME OF WATER TO BE CONTAINED OR INFILTRATED ON SITE SHALL BE DETERMINED BY MULTIPLYING THE TOTAL AREA OF NEW IMPERVIOUS SURFACE, IN SQUARE FEET, BY 0.16 FEET"

PROPOSED AREAS:
162 SQ.FT. (ROOF)

DRAINAGE CALCULATIONS:
162 SQ.FT. (NEW IMPERVIOUS) X .16 = 25.92 (26) CU.FT. OF PONDING REQUIRED.

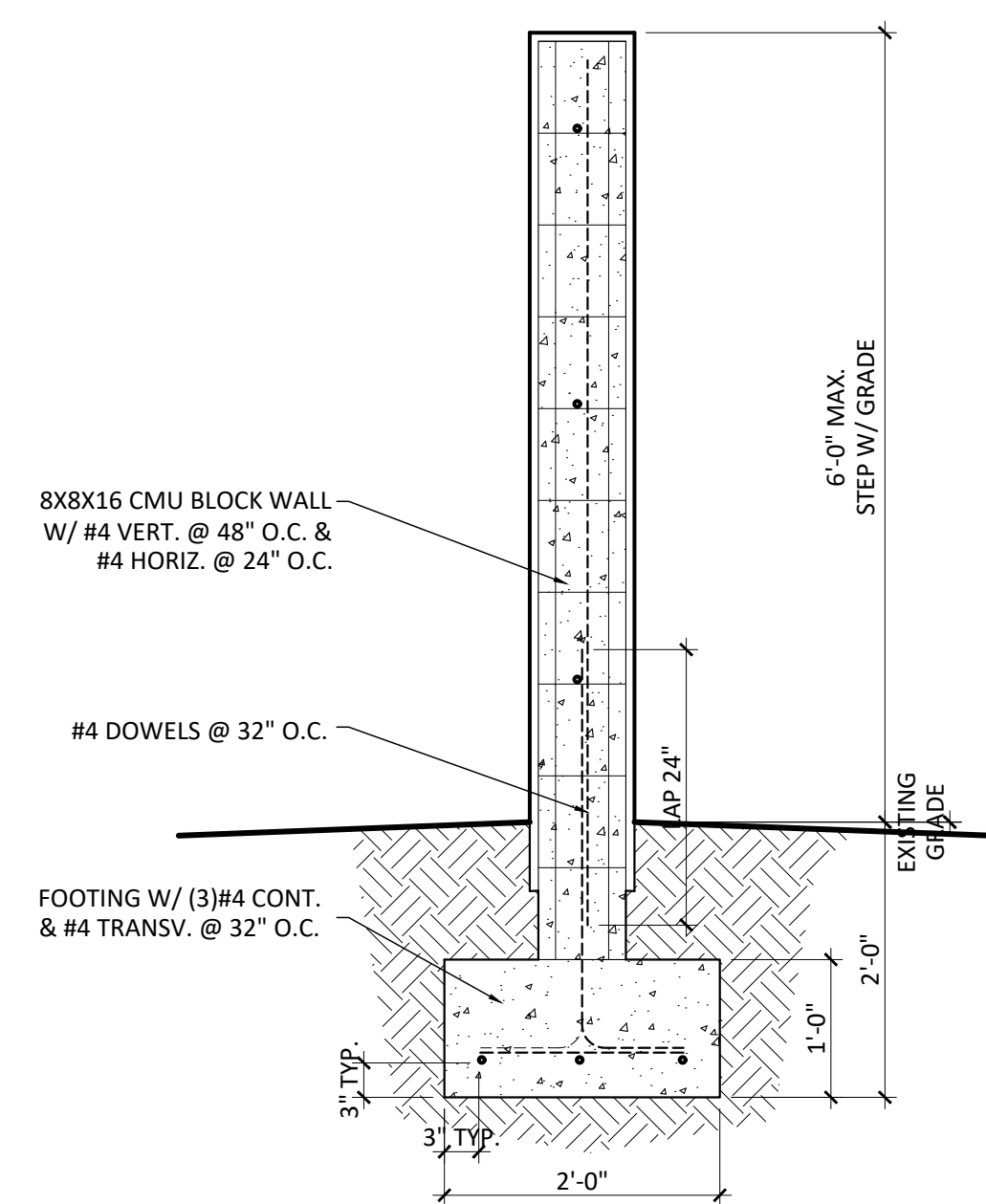
30 CU.FT. OF PONDING PROVIDED

**GARCIA RESIDENCE
REMODEL**
120 CAMINO SANTIAGO
SANTA FE, NM 87501

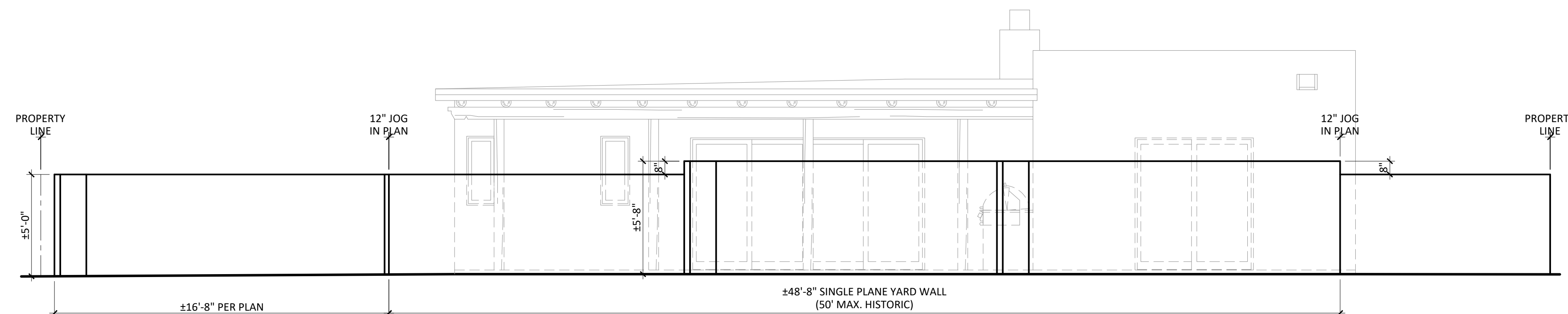
REVISION: HISTORIC PRESERVATION SUBMITTAL | DATE: 3/17/2026

SITE PLAN

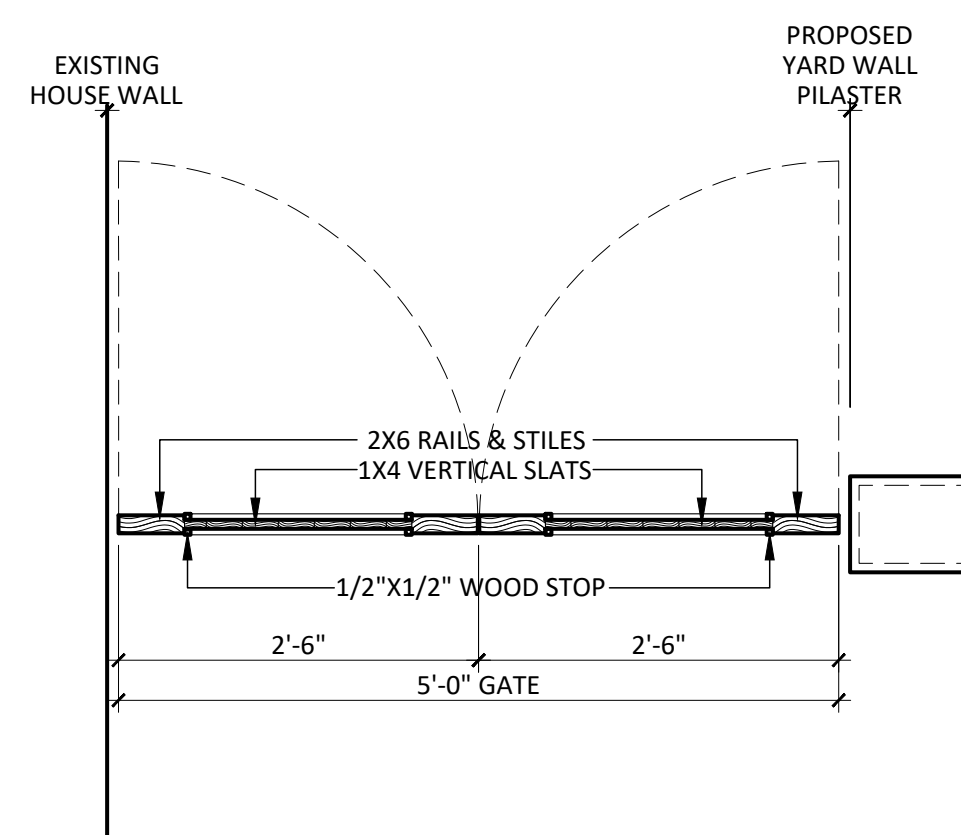
A0-1



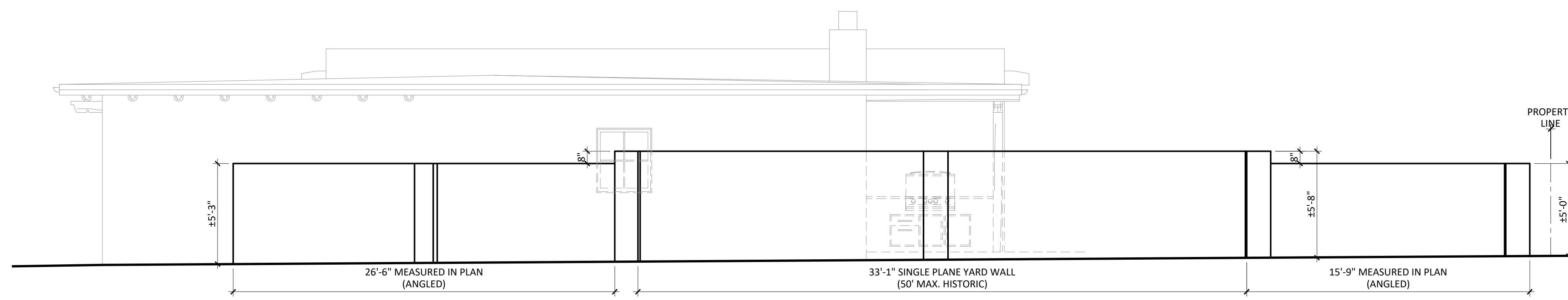
#5 - WALL DETAIL SCALE: 3/4" = 1'-0"



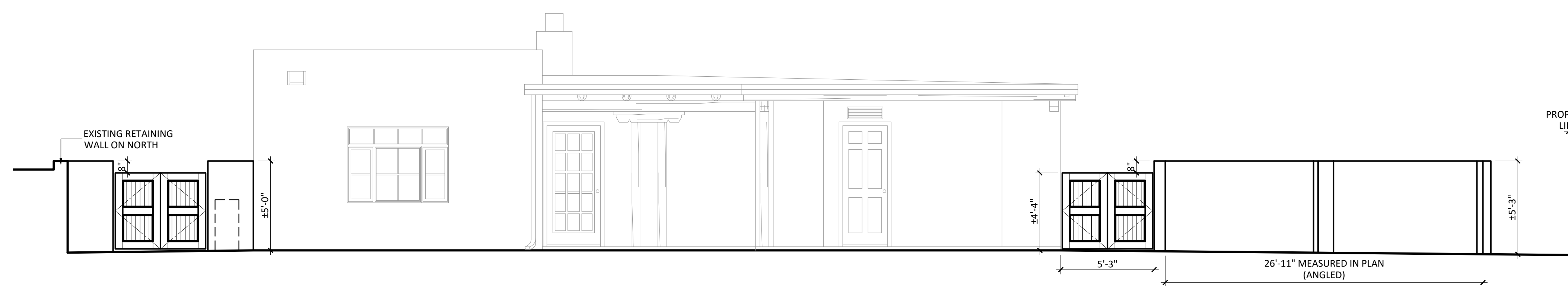
#3 - PROPOSED EAST YARD WALL SCALE: 1/4" = 1'-0"



#4 - GATE DETAILS SCALE: 3/4" = 1'-0"



#2 - PROPOSED SOUTH YARD WALL SCALE: 1/4" = 1'-0"



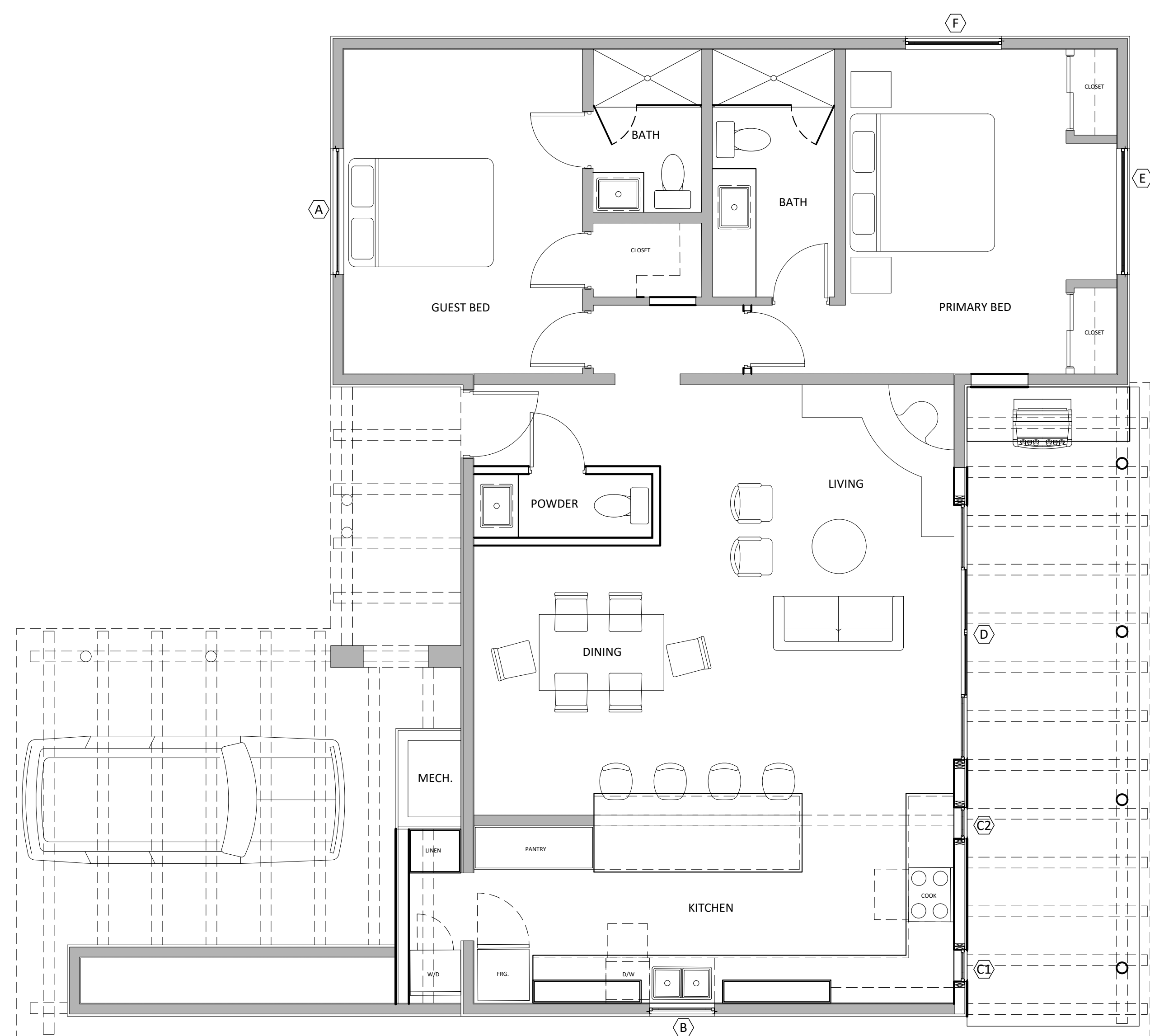
#1 - PROPOSED WEST YARD WALL & GATES SCALE: 1/4" = 1'-0"

**GARCIA RESIDENCE
REMODEL**
120 CAMINO SANTIAGO
SANTA FE, NM 87501

REVISION: HISTORIC PRESERVATION SUBMITTAL DATE: 3/17/2026

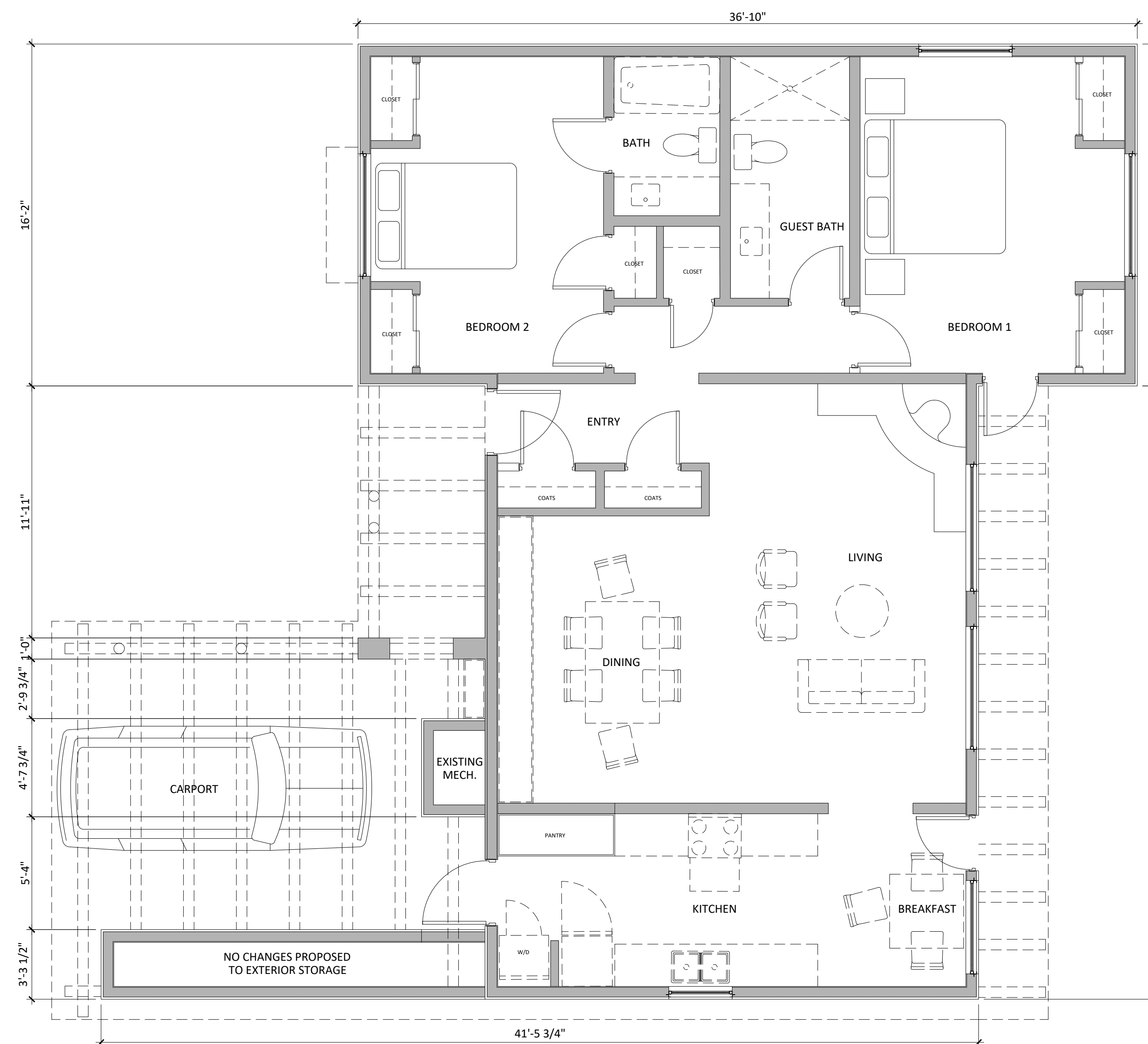
YARD WALL DETAILS

A0-2



#2 - PROPOSED FLOOR PLAN

SCALE: 1/4" = 1'-0"



#1 - EXISTING FLOOR PLAN

SCALE: 1/4" = 1'-0"

WINDOW SCHEDULE

WINDOWS TO BE ANDERSEN WINDOWS, 400 SERIES. COLOR TO BE DARK BRONZE, INTERIOR & EXTERIOR (WHITE, SANDTONE, TERRATONE, DARK BRONZE, BLACK). MUNTINS AS SHOWN ON ELEVATIONS, NONE PROPOSED FOR EAST FACADE.

QTY	SIZE (INCHES)	TYPE	OPP.	LOCATION	NOTES
A 1	68X51	COMPOSITE	-	BEDROOM	UNIT DOESN'T MEET EGRESS
1	18X38	CASEMENT	LEFT	-	-
1	32X38	PICTURE	FIXED	-	-
1	18X38	CASEMENT	RIGHT	-	-
1	68X13	TRANSOM	FIXED	-	-
MATCH EXISTING SIZE					
B 1	36X42	CASEMENT	LEFT	KITCHEN	-
C1 1	18X42	CASEMENT	LEFT	KITCHEN	-
C2 1	18X42	CASEMENT	RIGHT	KITCHEN	-
D 1	141X80	GLIDING DR.	OXXO	LIVING	-
E 1	72X80	GLIDING DR.	XO	BEDROOM	-
F 1	52X52	COMPOSITE	-	BEDROOM	UNIT MEETS EGRESS
1	26X52	CASEMENT	LEFT	-	-
1	26X52	CASEMENT	RIGHT	-	-
MATCH EXISTING SIZE					

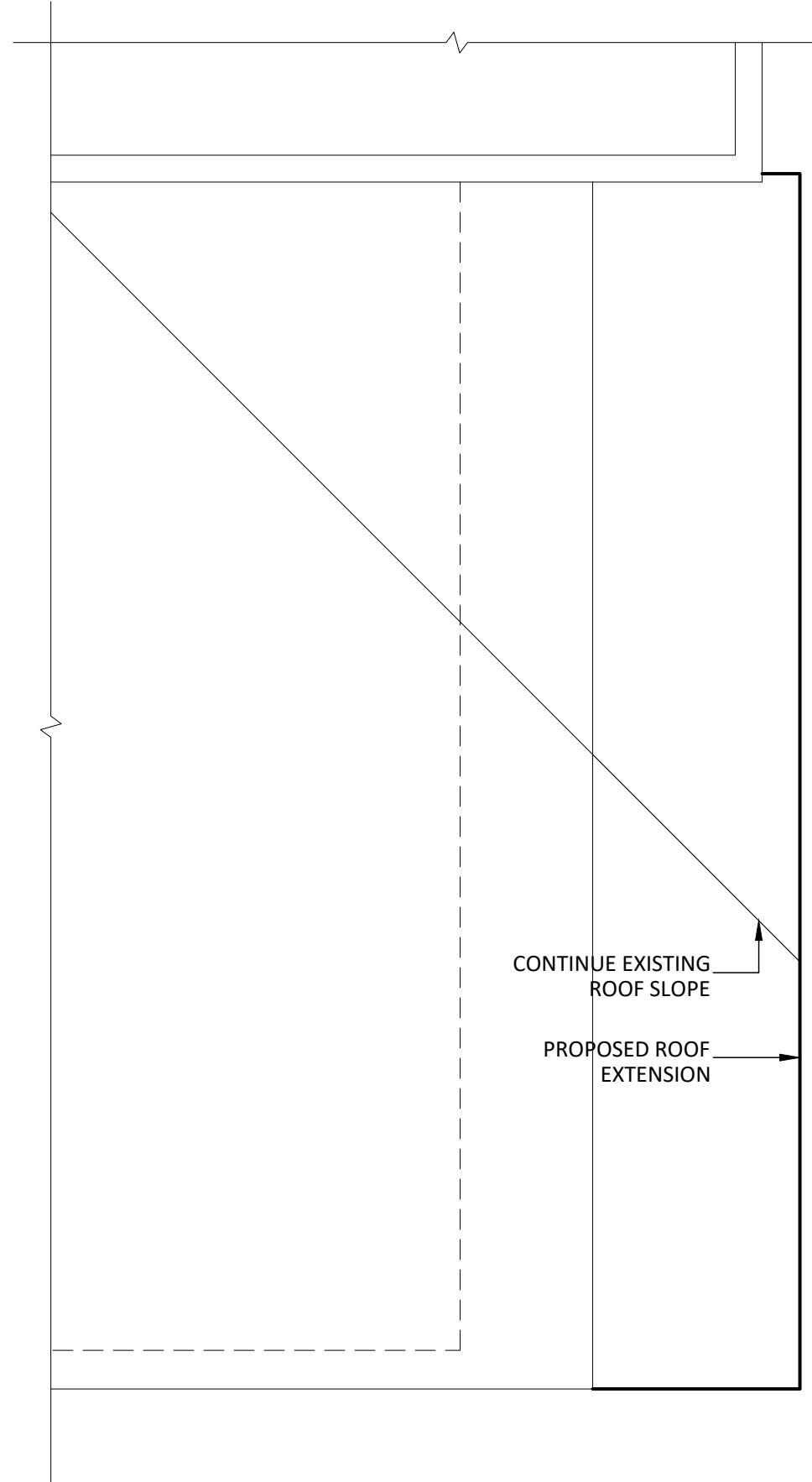
**GARCIA RESIDENCE
REMODEL**

120 CAMINO SANTIAGO
SANTA FE, NM 87501

REVISION: HISTORIC PRESERVATION SUBMITTAL | DATE: 3/17/2026

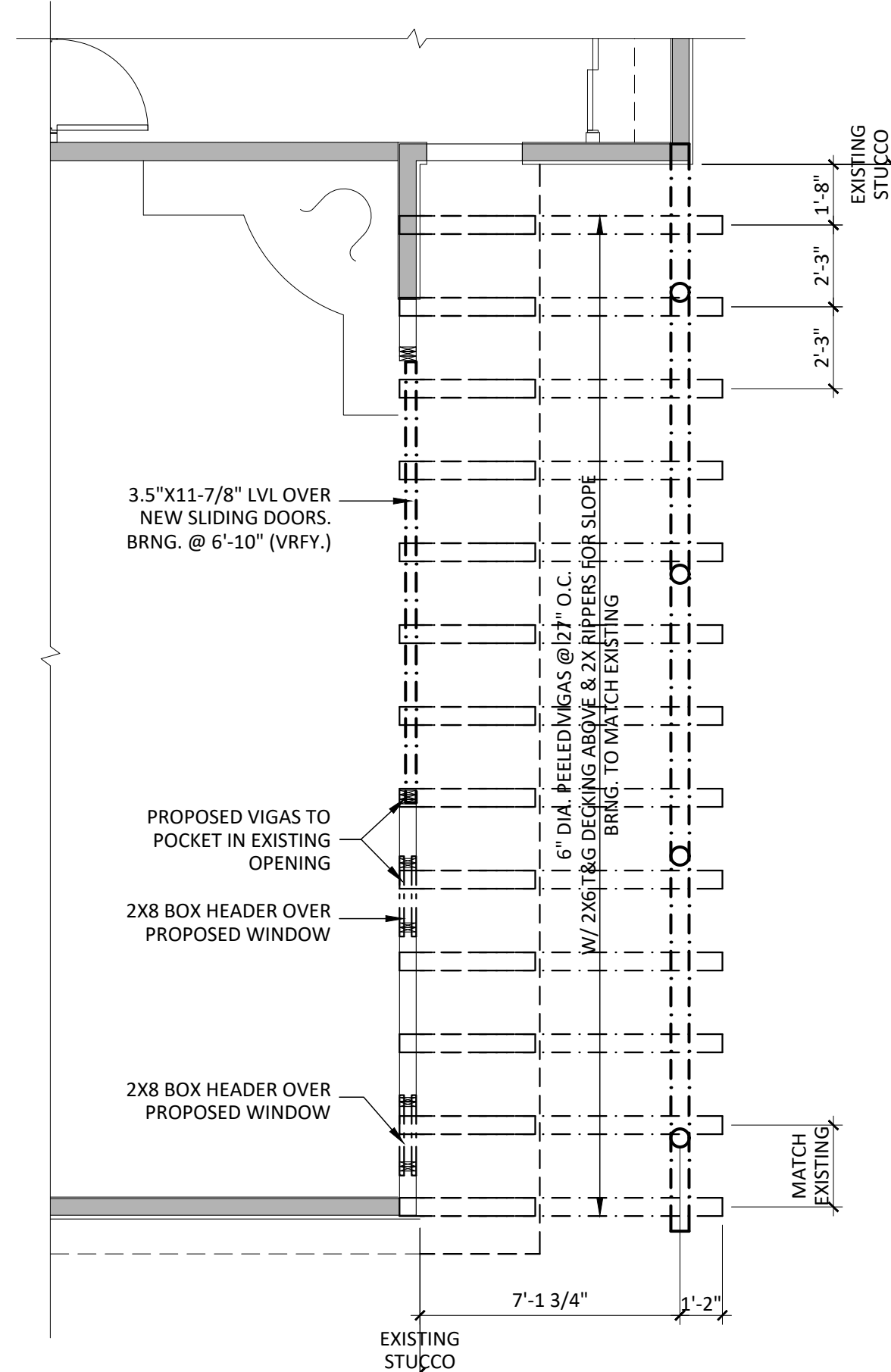
FLOOR PLANS

A1-1



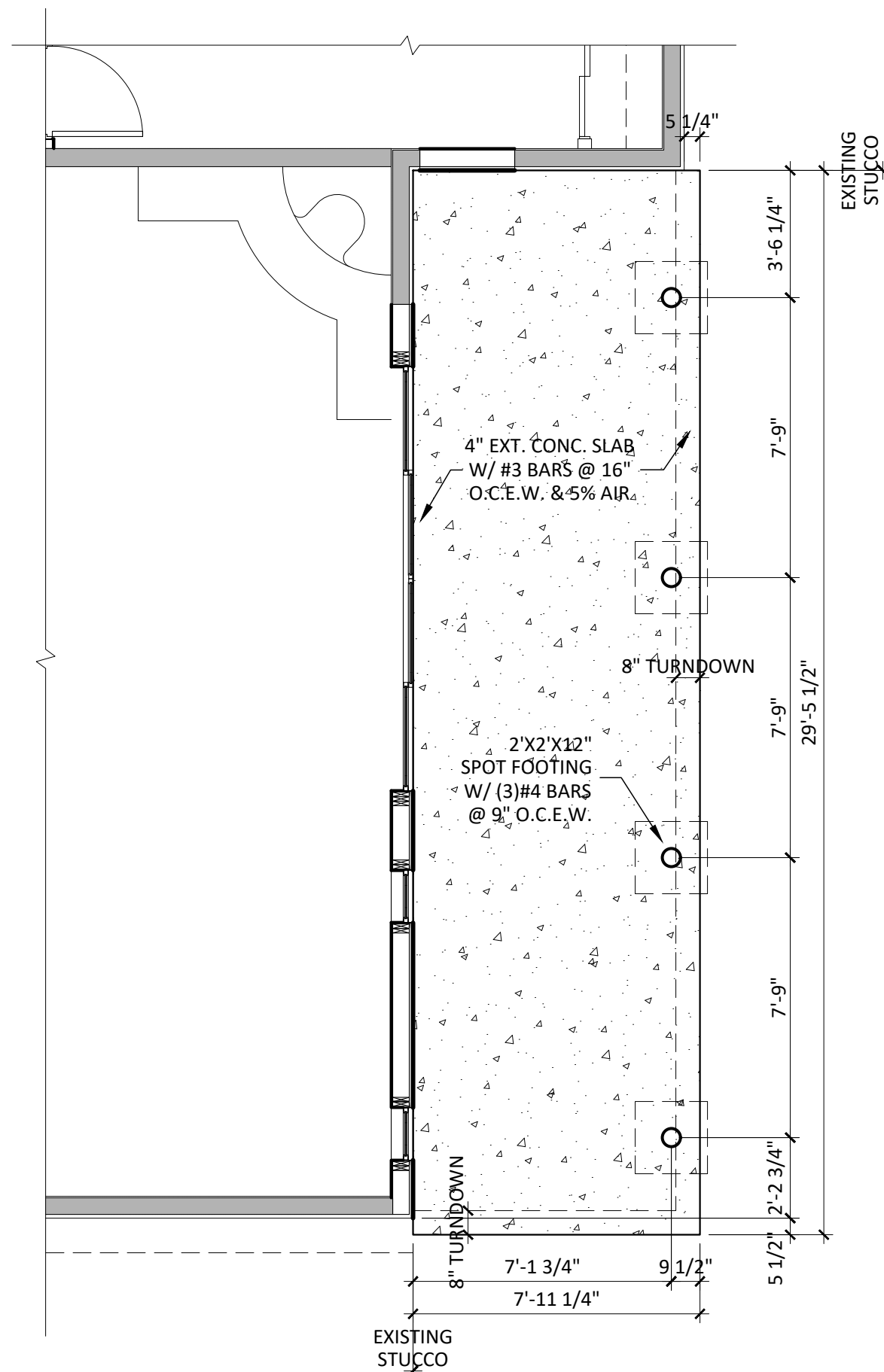
#5 - ROOF PLAN

SCALE: 1/4" = 1'-0"



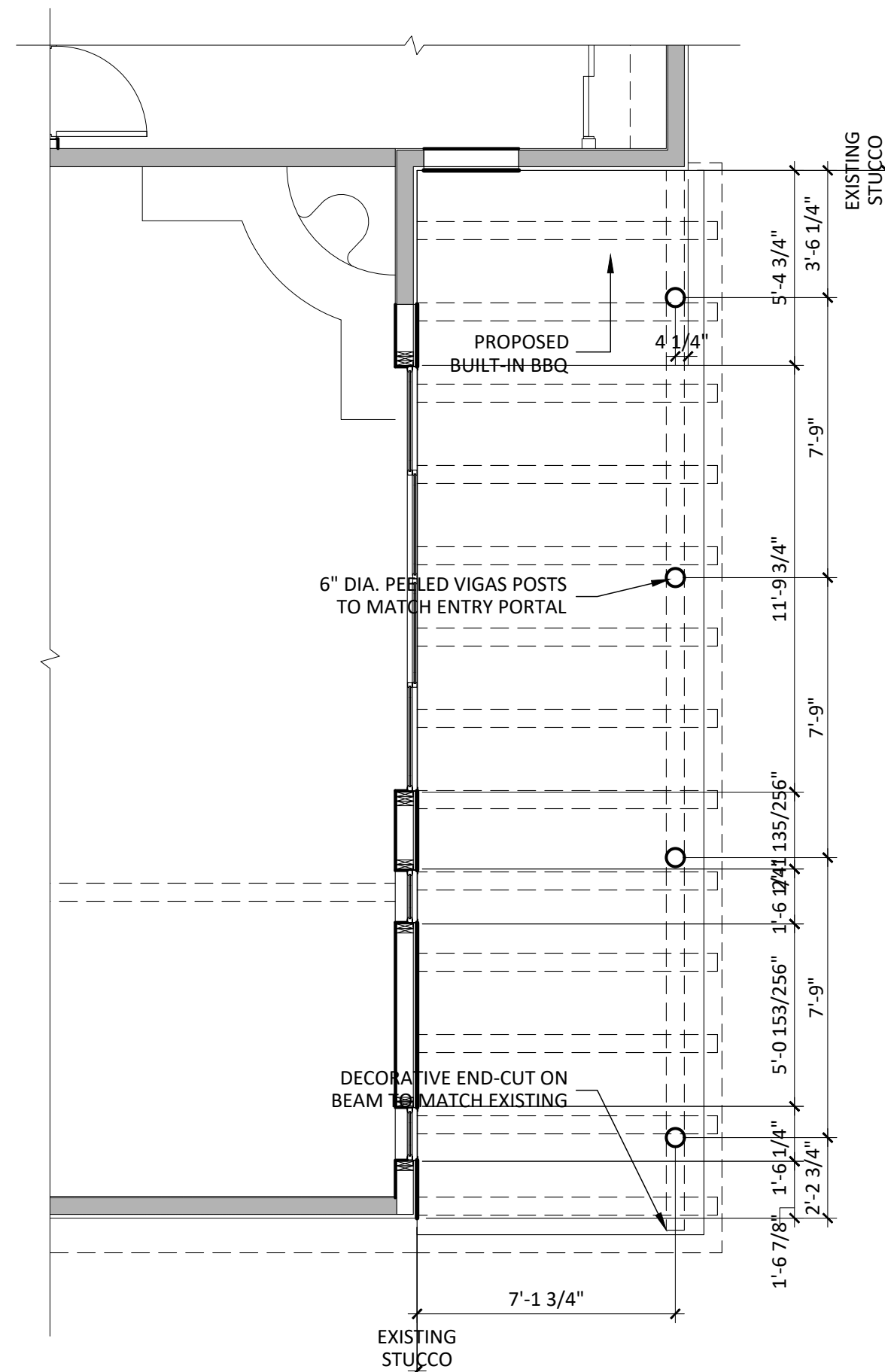
#4 - FRAME PLAN

SCALE: 1/4" = 1'-0"



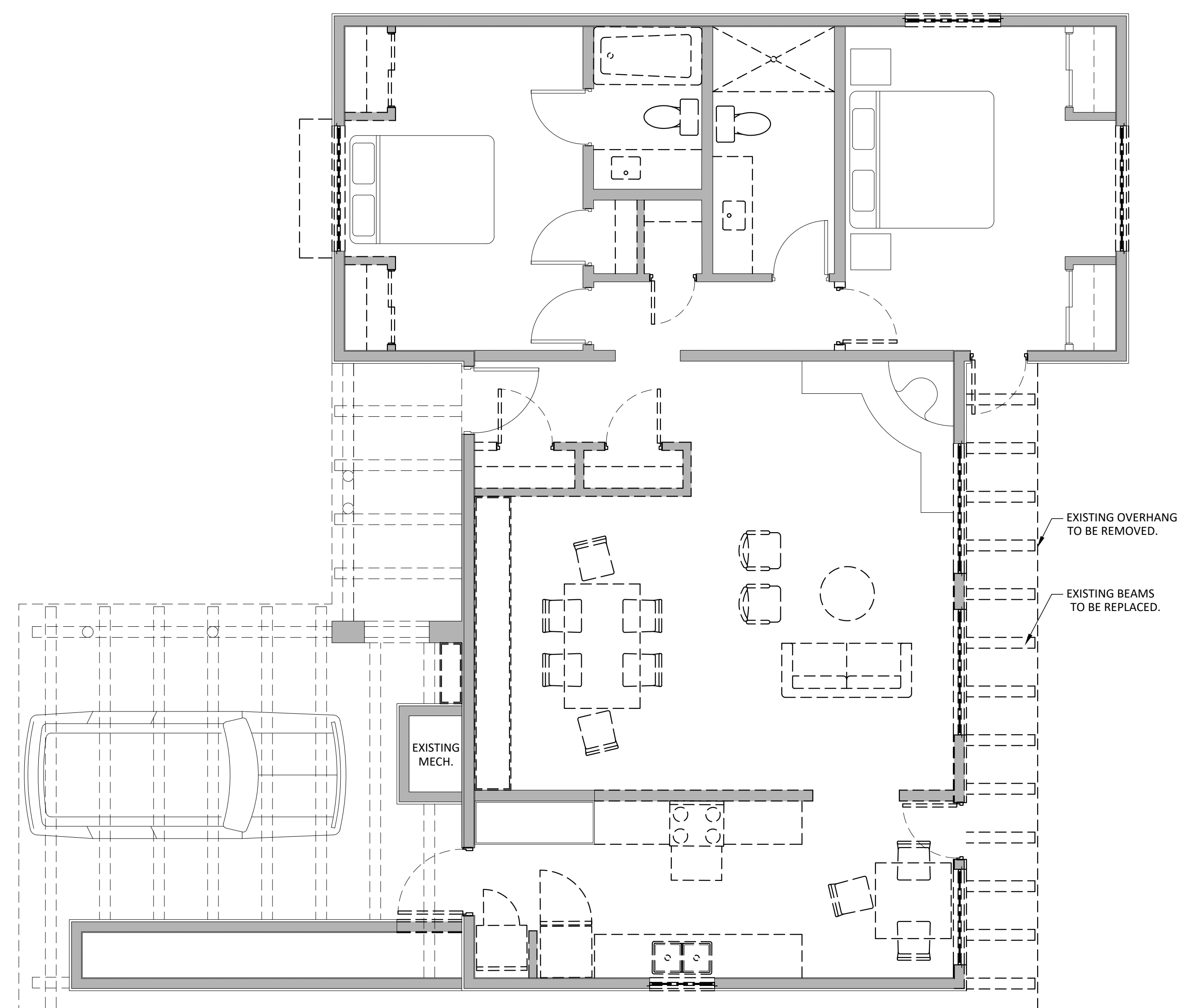
#3 - FOUNDATION PLAN

SCALE: 1/4" = 1'-0"



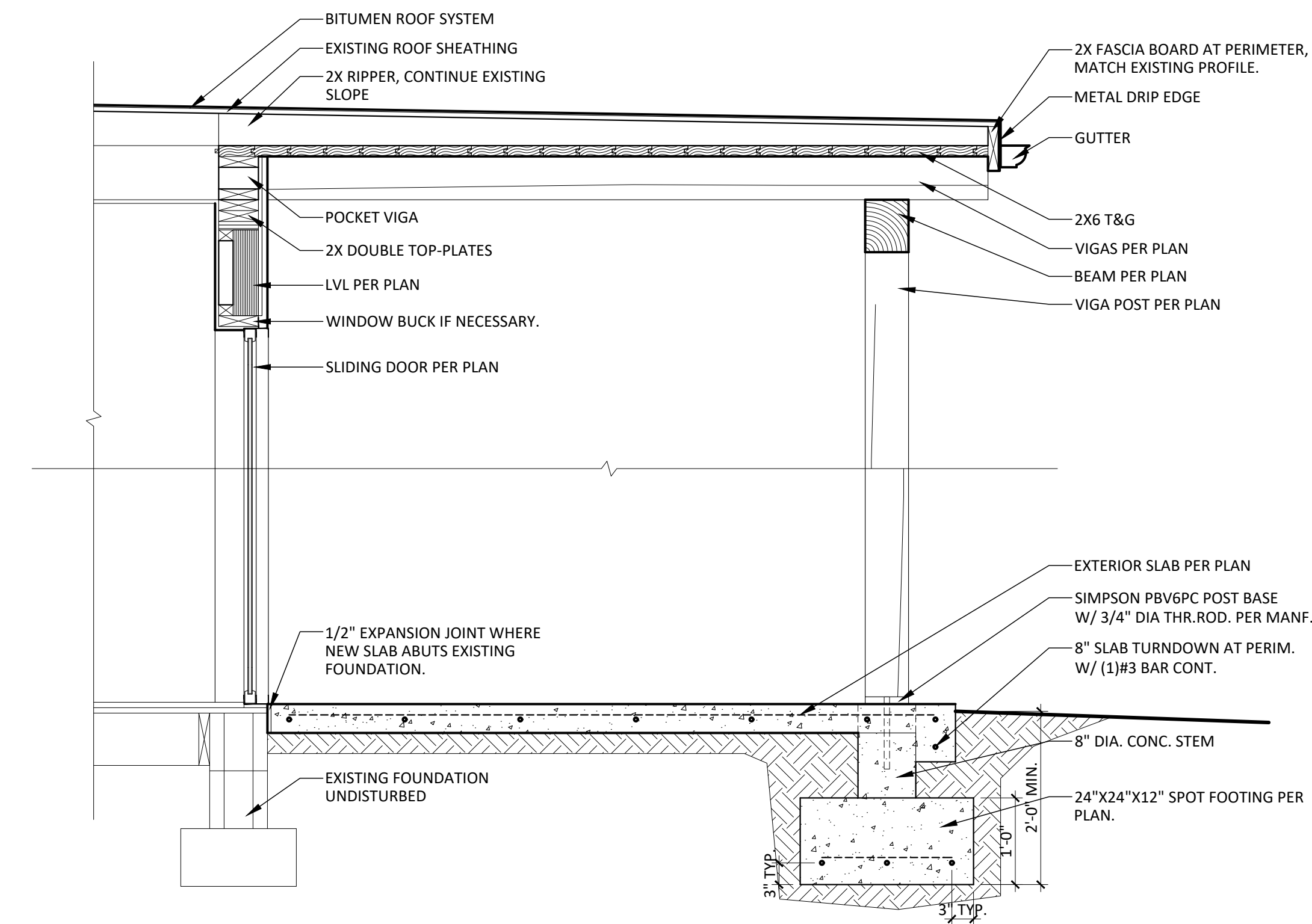
#2 - PROPOSED PORTAL

SCALE: 1/4" = 1'-0"



#1 - DEMOLITION PLAN

SCALE: 1/4" = 1'-0"



#6 - FRAME DETAIL

SCALE: 3/4" = 1'-0"

GARCIA RESIDENCE REMODEL
120 CAMINO SANTIAGO
SANTA FE, NM 87501

REVISION: HISTORIC PRESERVATION SUBMITTAL | DATE: 3/17/2026

PORTAL EXTENSION

A1-2

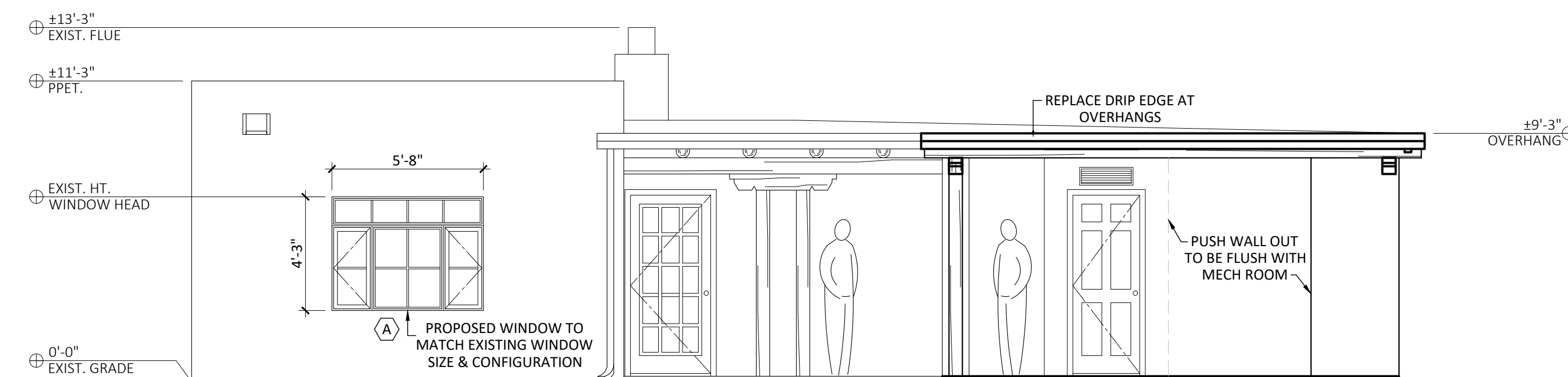
GENERAL NOTES

- * NEW HIGH EFFICIENCY REPLACEMENT WINDOWS AS SHOWN. WINDOW COLOR PER WINDOW SCHEDULE.
- * RE-ROOF OF THE ENTIRE HOME. ROOF TYPE TO BE MODIFIED BITUMEN, GRANULES TO BE TAN, TYPICAL.
- * RE-STUCCO OF THE ENTIRE HOME. PROPOSED STUCCO COLOR TO BE COTTONWOOD WITH A LIGHT SAND FINISH.
- * NEW METAL DRIP EDGE AT OVERHANGS. COLOR TO BE DARK BRONZE.
- * RE-STAIN EXTERIOR WOOD WITH A NATURAL STAIN.

WINDOW SCHEDULE

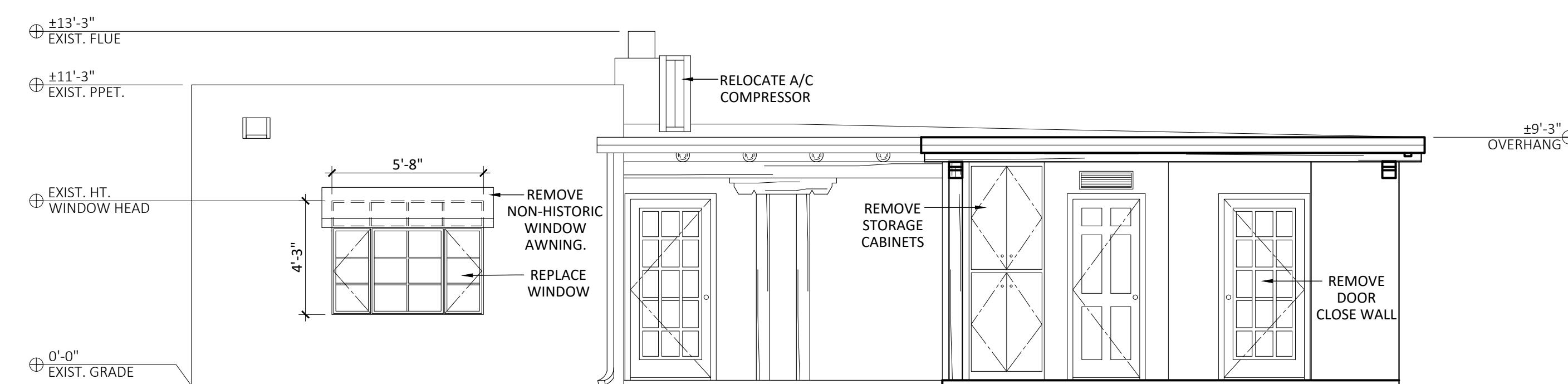
WINDOWS TO BE ANDERSEN WINDOWS, 400 SERIES. COLOR TO BE DARK BRONZE, INTERIOR & EXTERIOR (WHITE, SANDTONE, TERRATONE, DARK BRONZE, BLACK). MUNTINS AS SHOWN ON ELEVATIONS, NONE PROPOSED FOR EAST FACADE.

(X)	QTY	SIZE (INCHES)	TYPE	OPP.	LOCATION	NOTES
A	1	68X51	COMPOSITE	-	BEDROOM	UNIT DOESN'T MEET EGRESS
	1	18X38	CASEMENT	LEFT	-	-
	1	32X38	PICTURE	FIXED	-	-
	1	18X38	CASEMENT	RIGHT	-	-
	1	68X13	TRANSOM	FIXED	-	-
MATCH EXISTING SIZE						
B	1	36X42	CASEMENT	LEFT	KITCHEN	-
C1	1	18X42	CASEMENT	LEFT	KITCHEN	-
C2	1	18X42	CASEMENT	RIGHT	KITCHEN	-
D	1	141X80	GLIDING DR.	OXXO	LIVING	-
E	1	72X80	GLIDING DR.	XO	BEDROOM	-
F	1	52X52	COMPOSITE	-	BEDROOM	UNIT MEETS EGRESS
	1	26X52	CASEMENT	LEFT	-	-
	1	26X52	CASEMENT	RIGHT	-	-
MATCH EXISTING SIZE						



#2 - PROPOSED WEST ELEVATION (STREET FRONT)

SCALE: 1/4" = 1'-0"



#1 - EXISTING WEST ELEVATION (STREET FRONT)

SCALE: 1/4" = 1'-0"

GARCIA RESIDENCE REMODEL

120 CAMINO SANTIAGO
SANTA FE, NM 87501

REVISION: HISTORIC PRESERVATION SUBMITTAL | DATE: 3/17/2026

BUILDING ELEVATIONS

A2-1

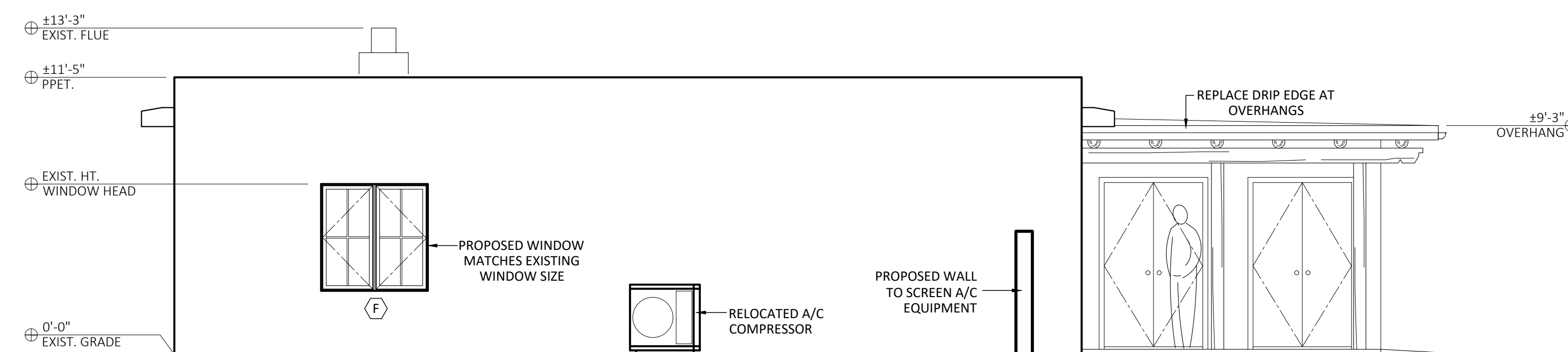
GENERAL NOTES

- * NEW HIGH EFFICIENCY REPLACEMENT WINDOWS AS SHOWN. WINDOW COLOR PER WINDOW SCHEDULE.
- * RE-ROOF OF THE ENTIRE HOME. ROOF TYPE TO BE MODIFIED BITUMEN, GRANULES TO BE TAN, TYPICAL.
- * RE-STUCCO OF THE ENTIRE HOME. PROPOSED STUCCO COLOR TO BE COTTONWOOD WITH A LIGHT SAND FINISH.
- * NEW METAL DRIP EDGE AT OVERHANGS. COLOR TO BE DARK BRONZE.
- * RE-STAIN EXTERIOR WOOD WITH A NATURAL STAIN.

WINDOW SCHEDULE

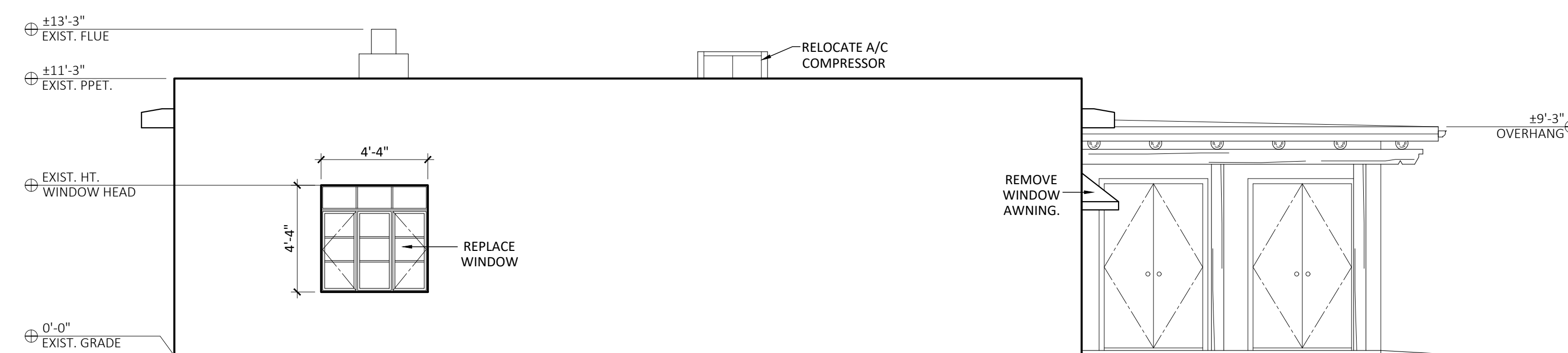
WINDOWS TO BE ANDERSEN WINDOWS, 400 SERIES. COLOR TO BE DARK BRONZE, INTERIOR & EXTERIOR (WHITE, SANDTONE, TERRATONE, DARK BRONZE, BLACK). MUNTINS AS SHOWN ON ELEVATIONS, NONE PROPOSED FOR EAST FACADE.

(X)	QTY	SIZE (INCHES)	TYPE	OPP.	LOCATION	NOTES
A	1	68X51	COMPOSITE	-	BEDROOM	UNIT DOESN'T MEET EGRESS
	1	18X38	CASEMENT	LEFT	-	-
	1	32X38	PICTURE	FIXED	-	-
	1	18X38	CASEMENT	RIGHT	-	-
	1	68X13	TRANSOM	FIXED	-	-
MATCH EXISTING SIZE						
B	1	36X42	CASEMENT	LEFT	KITCHEN	-
C1	1	18X42	CASEMENT	LEFT	KITCHEN	-
C2	1	18X42	CASEMENT	RIGHT	KITCHEN	-
D	1	141X80	GLIDING DR.	OXXO	LIVING	-
E	1	72X80	GLIDING DR.	XO	BEDROOM	-
F	1	52X52	COMPOSITE	-	BEDROOM	UNIT MEETS EGRESS
	1	26X52	CASEMENT	LEFT	-	-
	1	26X52	CASEMENT	RIGHT	-	-
MATCH EXISTING SIZE						



#2 - PROPOSED NORTH ELEVATION

SCALE: 1/4" = 1'-0"



#1 - EXISTING NORTH ELEVATION

SCALE: 1/4" = 1'-0"

**GARCIA RESIDENCE
REMODEL**
120 CAMINO SANTIAGO
SANTA FE, NM 87501

REVISION: HISTORIC PRESERVATION SUBMITTAL | DATE: 3/17/2026

BUILDING ELEVATIONS

A2-2

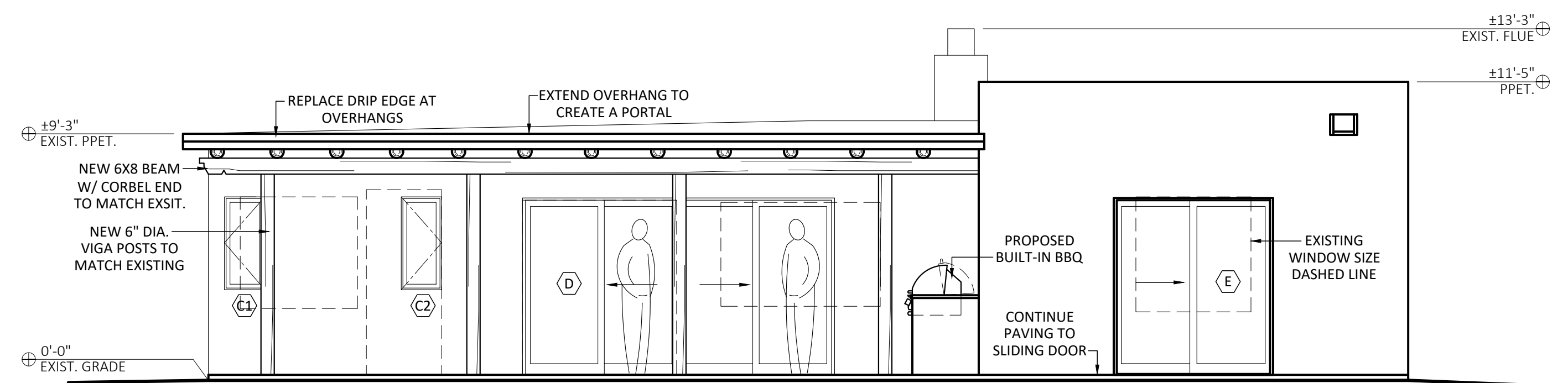
GENERAL NOTES

- * NEW HIGH EFFICIENCY REPLACEMENT WINDOWS AS SHOWN. WINDOW COLOR PER WINDOW SCHEDULE.
- * RE-ROOF OF THE ENTIRE HOME. ROOF TYPE TO BE MODIFIED BITUMEN, GRANULES TO BE TAN, TYPICAL.
- * RE-STUCCO OF THE ENTIRE HOME. PROPOSED STUCCO COLOR TO BE COTTONWOOD WITH A LIGHT SAND FINISH.
- * NEW METAL DRIP EDGE AT OVERHANGS. COLOR TO BE DARK BRONZE.
- * RE-STAIN EXTERIOR WOOD WITH A NATURAL STAIN.

WINDOW SCHEDULE

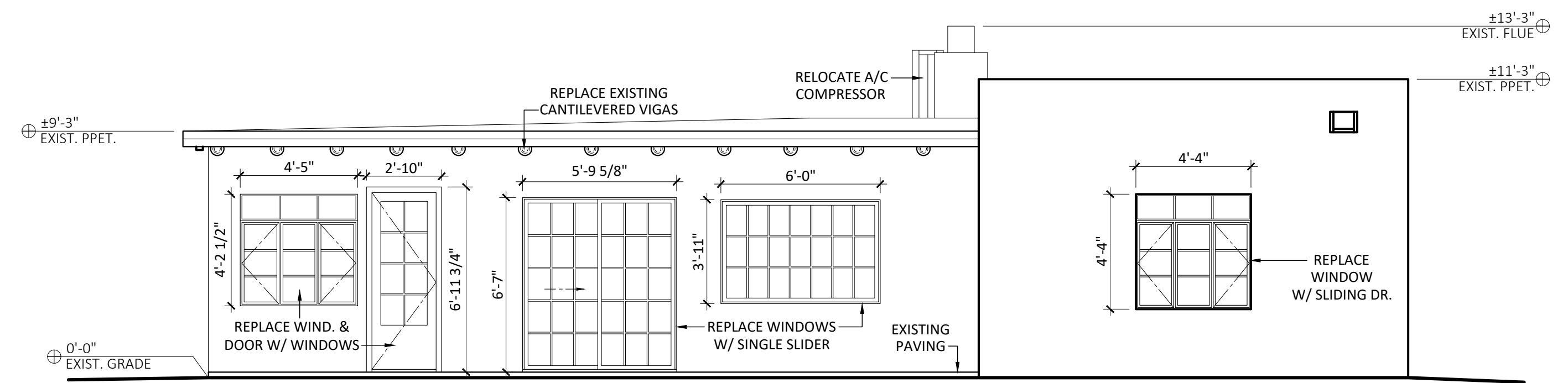
WINDOWS TO BE ANDERSEN WINDOWS, 400 SERIES. COLOR TO BE DARK BRONZE, INTERIOR & EXTERIOR (WHITE, SANDTONE, TERRATONE, DARK BRONZE, BLACK). MUNTINS AS SHOWN ON ELEVATIONS, NONE PROPOSED FOR EAST FACADE.

(X)	QTY	SIZE (INCHES)	TYPE	OPP.	LOCATION	NOTES
A	1	68X51	COMPOSITE	-	BEDROOM	UNIT DOESN'T MEET EGRESS
	1	18X38	CASEMENT	LEFT	-	-
	1	32X38	PICTURE	FIXED	-	-
	1	18X38	CASEMENT	RIGHT	-	-
	1	68X13	TRANSOM	FIXED	-	-
MATCH EXISTING SIZE						
B	1	36X42	CASEMENT	LEFT	KITCHEN	-
C1	1	18X42	CASEMENT	LEFT	KITCHEN	-
C2	1	18X42	CASEMENT	RIGHT	KITCHEN	-
D	1	141X80	GLIDING DR.	OXXO	LIVING	-
E	1	72X80	GLIDING DR.	XO	BEDROOM	-
F	1	52X52	COMPOSITE	-	BEDROOM	UNIT MEETS EGRESS
	1	26X52	CASEMENT	LEFT	-	-
	1	26X52	CASEMENT	RIGHT	-	-
MATCH EXISTING SIZE						



#2 - PROPOSED EAST ELEVATION (BACK YARD)

SCALE: 1/4" = 1'-0"



#1 - EXISTING EAST ELEVATION (BACK YARD)

SCALE: 1/4" = 1'-0"

GARCIA RESIDENCE REMODEL
 120 CAMINO SANTIAGO
 SANTA FE, NM 87501

REVISION: HISTORIC PRESERVATION SUBMITTAL | DATE: 3/17/2026

BUILDING ELEVATIONS

A2-3

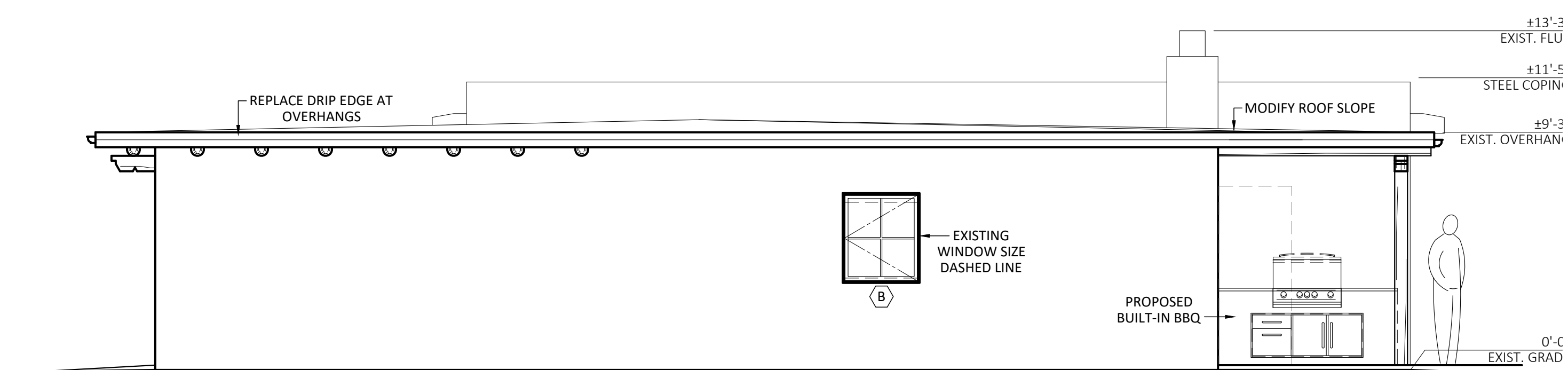
GENERAL NOTES

- * NEW HIGH EFFICIENCY REPLACEMENT WINDOWS AS SHOWN. WINDOW COLOR PER WINDOW SCHEDULE.
- * RE-ROOF OF THE ENTIRE HOME. ROOF TYPE TO BE MODIFIED BITUMEN, GRANULES TO BE TAN, TYPICAL.
- * RE-STUCCO OF THE ENTIRE HOME. PROPOSED STUCCO COLOR TO BE COTTONWOOD WITH A LIGHT SAND FINISH.
- * NEW METAL DRIP EDGE AT OVERHANGS. COLOR TO BE DARK BRONZE.
- * RE-STAIN EXTERIOR WOOD WITH A NATURAL STAIN.

WINDOW SCHEDULE

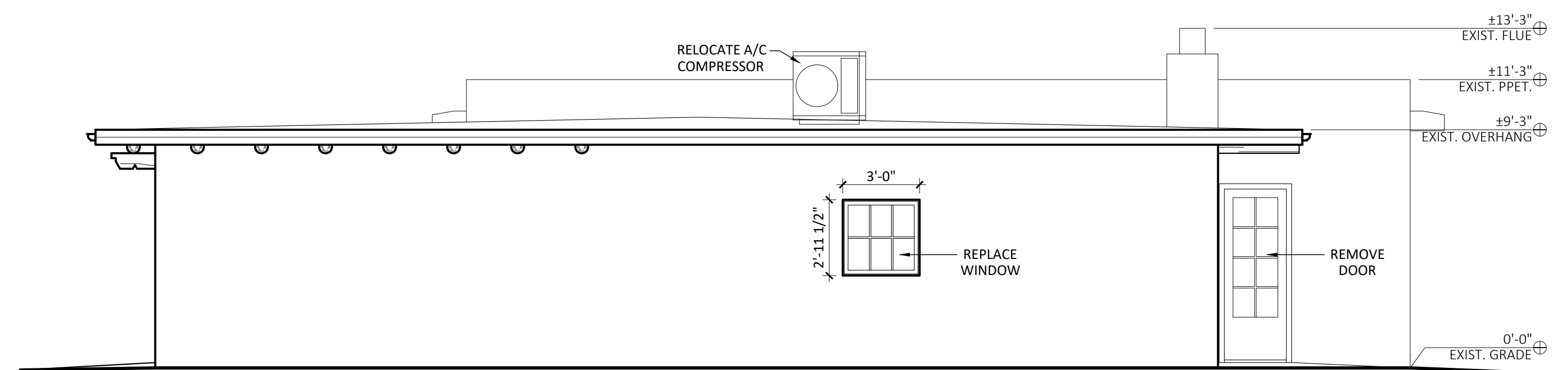
WINDOWS TO BE ANDERSEN WINDOWS, 400 SERIES. COLOR TO BE DARK BRONZE, INTERIOR & EXTERIOR (WHITE, SANDTONE, TERRATONE, DARK BRONZE, BLACK). MUNTINS AS SHOWN ON ELEVATIONS, NONE PROPOSED FOR EAST FACADE.

(X)	QTY	SIZE (INCHES)	TYPE	OPP.	LOCATION	NOTES
A	1	68X51	COMPOSITE	-	BEDROOM	UNIT DOESN'T MEET EGRESS
	1	18X38	CASEMENT	LEFT	-	-
	1	32X38	PICTURE	FIXED	-	-
	1	18X38	CASEMENT	RIGHT	-	-
	1	68X13	TRANSOM	FIXED	-	-
MATCH EXISTING SIZE						
B	1	36X42	CASEMENT	LEFT	KITCHEN	-
C1	1	18X42	CASEMENT	LEFT	KITCHEN	-
C2	1	18X42	CASEMENT	RIGHT	KITCHEN	-
D	1	141X80	GLIDING DR.	OXXO	LIVING	-
E	1	72X80	GLIDING DR.	XO	BEDROOM	-
F	1	52X52	COMPOSITE	-	BEDROOM	UNIT MEETS EGRESS
	1	26X52	CASEMENT	LEFT	-	-
	1	26X52	CASEMENT	RIGHT	-	-
MATCH EXISTING SIZE						



#2 - PROPOSED SOUTH ELEVATION

SCALE: 1/4" = 1'-0"



#1 - EXISTING SOUTH ELEVATION

SCALE: 1/4" = 1'-0"

**GARCIA RESIDENCE
REMODEL**
120 CAMINO SANTIAGO
SANTA FE, NM 87501

REVISION: HISTORIC PRESERVATION SUBMITTAL | DATE: 3/17/2026

BUILDING ELEVATIONS

A2-4