



# AI in **SFFD**

Utilizing Artificial Intelligence for FIRE and EMS Operations

# AI in DOCUMENTATION



- **STREAMLINE DATA ENTRY**
  - Analyzes narrative inputs and immediately suggests structured data, significantly reducing the amount of clicking and typing required by FIRE and EMS crews.
- **INSTANT IMAGE RECOGNITION**
  - Crews simply snap photos of face sheets, handwritten notes, or pill bottles. AI extract crucial info and inputs into the report.
- **SEAMLESS FORM FILLS**
  - Using voice dictation or images. AI organizes the info and inputs directly into the report.

This process stays entirely within a secure environment

**Document Faster. More Accurate. Fewer Clicks.**

# AI in WILDFIRE CAMERAS



- **Scale and Visibility**
  - AI-powered camera networks utilize high-definition optics to conduct continuous 360-degree sweeps. These cameras can detect visual anomalies up to 60 miles away during a clear day and 120 miles away at night.
- **Direct Alerts to First Responders**
  - Alerting first responders faster than 911 calls over 30% of the time.
  - Actionable Intelligence.
- **Real time Resource Allocation**
  - Allowing proper resource allocation allows crews to fight fire offensively instead of defensively.



**FIGHTING FIRES WITH AI**  
HOW PANO CAMERAS HELP FIREFIGHTERS

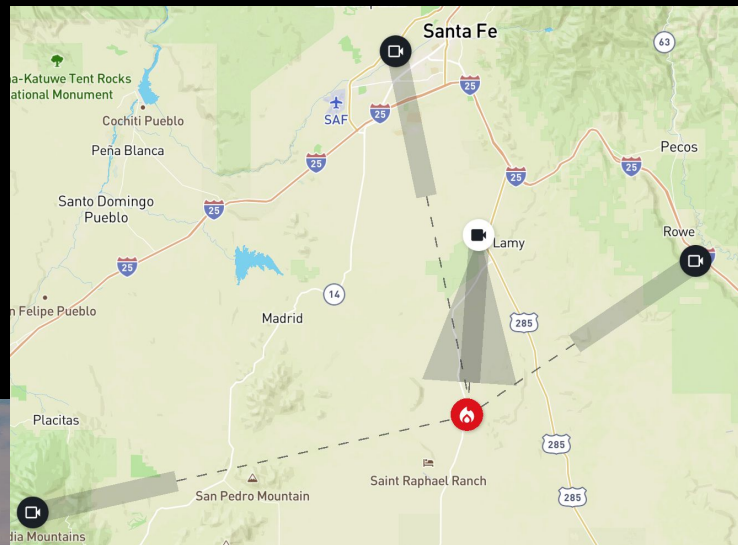
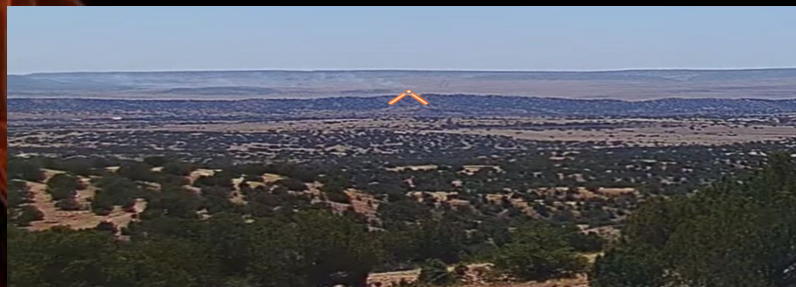
NEW ON



KQAT  
8.18.19

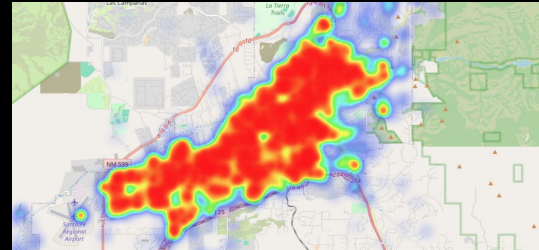
# AI in WILDFIRE CAMERAS

Images From **04/03/2026**



# AI in DATA ANALYTICS

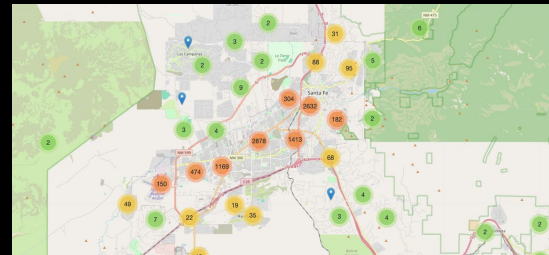
- Response Location & Heat Maps
- Resource Allocation
- Unit Hour Utilization
- Personnel Placement



**Incidents by Day and Hour**  
Jan 01, 2026 12:00 AM to Dec 31, 2026 11:59 PM

Day of Week	0000	0200	0400	0600	0800	1000	1200	1400	1600	1800	2000	2200												
Sunday	35	38	27	36	23	29	27	34	39	58	80	61	73	39	74	97	92	67	44	56	48	51	51	
Monday	21	29	27	17	22	40	57	68	84	93	93	104	94	91	107	72	80	63	54	63	57	22	45	
Tuesday	38	41	30	16	17	23	34	35	65	86	106	94	86	118	85	90	69	65	53	39	55	57	31	
Wednesday	21	31	23	18	25	22	41	46	80	102	98	111	80	84	93	101	87	81	81	56	55	61	35	26
Thursday	61	37	38	38	35	11	36	60	62	90	90	118	118	95	102	81	73	76	64	39	53			
Friday	46	40	16	27	15	30	42	52	73	90	107	90	114	86	90	99	98	91	73	80	55	70	50	39
Saturday	36	36	49	18	30	32	19	60	61	49	65	59	86	85	46	65	73	65	76	81	43	42	61	56

Hour of Day



# AI in TRAINING

- AI Integrated Training Software
  - Simulation Software that reacts from decisions made within the scenario
- Firefighter Development at all Levels
  - Firefighter
  - Engineer
  - Lieutenant/ Captain



# Questions?