



CITY OF SANTA FE WATER

2025



Year in Review Newsletter

Providing a safe, reliable, and resilient water supply to meet Santa Fe's needs

DIRECTOR'S *message*

Dear Community Members,

City of Santa Fe Water has a lot to be proud of from 2025, including significant capital investments, continued progress on our long-range Water 2100 planning effort, and meaningful conservation achievements by our customers, all while navigating hydrological challenges. We remain committed to delivering safe, reliable, and resilient water now and for generations to come.

This report highlights where we've been, what we've built, and where we're headed. Thank you for your continued trust in City of Santa Fe Water.

— **JESSE ROACH**, Interim City of Santa Fe Public Utilities Department Director

System at a Glance

Who we are and what we operate

Our Service Area

City of Santa Fe Water (CoSFW) serves more than 90,000 customers through over 38,000 connections. Our customer base includes residential, commercial, and institutional accounts, all of whom rely on the system for safe, reliable, and resilient water service.



» Infrastructure Overview

- ✓ 615 miles of distribution pipeline
- ✓ 2 water treatment plants with 27 million gallons per day (MGD) combined capacity
- ✓ 2 reservoirs with 1.28 billion gallons of capacity
- ✓ 2 wellfields, comprised of 20 water supply wells
- ✓ Over 38,000 water meters

90,000+

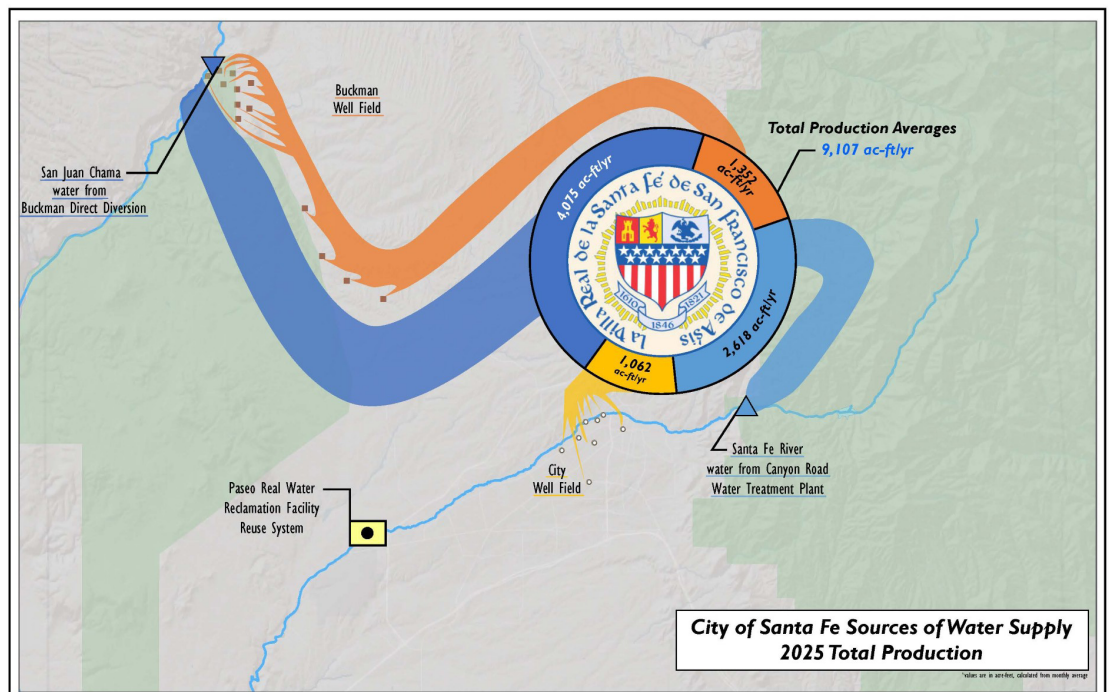
Customers Served
Residential
& Commercial

9,107

Acre-Feet of Water
Produced From our
Four Sources

615 mi

Pipeline Network
Distribution System



2025 Highlights

Key accomplishments this year

\$15M

Capital Invested
Infrastructure Projects FY25

6

Main Breaks per 100 miles of pipe
Below national annual average of 11

8.1

Average Daily Demand, in Million Gallons
in 2025

Flexible Operations

CoSFW maintained a high-quality water system amid hydrological challenges in 2025. During historically low flows on the Rio Grande, CoSFW strategically managed its use of San Juan Chama Project water at the Buckman Direct Diversion (BDD) to ensure continued supply. Santa Fe River reservoir operations were also successfully managed through active construction at Nichols and an above-average monsoon season and record flows on the Santa Fe River.

Water Quality

In 2025, CoSFW conducted extensive drinking water quality testing, surpassing all state and federal regulatory requirements set by the Safe Drinking Water Act. Full details of these tests are available in the annual Water Quality Report at <https://santafenm.gov/public-utilities/water/water-resources-1/water-quality-keeping-our-water-safe>



> Santa Fe River flows over flume above McClure during record high flows in September.



Transmission and Distribution

The Transmission and Distribution (T&D) team continues to ensure reliable water delivery throughout the system. In 2025, the team responded to 34 main breaks, all of which were repaired successfully with limited water loss. CoSFW also allocates \$1.6 million annually to the Priority Line Replacement Program, which proactively replaces water lines at the highest risk of failure with the goal of reducing main breaks in the future.

> Contractor replacing pipe on Garcia Street as part of the priority line replacement project.

Capital Improvement Projects

Investing in infrastructure for today and tomorrow

In FY2025, CoSFW invested \$15 million in capital infrastructure across multiple projects, ensuring the long-term safety, reliability, and resilience of the City’s water system. In support of these investments, the first rate increase since 2009 took effect in 2026, providing CoSFW with the funding needed to construct the following major projects.

Projects	Status	Total Budget	Description
Nichols Dam Outlet Works Rehabilitation	Complete	\$19M	Updated outlet conduit which will allow for hydropower generation at Canyon Road Water Treatment Plant. Sand filter to control reservoir seepage. Modified existing intake structure to improve capacity and durability. New discharge vault to allow for more accurate metering and flow control for each downstream use. Aeration system in the reservoir to improve water quality.
CRWTP Flocculation and Sedimentation Rehabilitation	In Construction	\$20M	Repair of aging flocculation and sedimentation basins which will increase plant capacity and efficiency. Project will increase the capacity of the plant from 8 to 12 MGD and reduce seasonal water treatment challenges.
CRWTP Chemical Feed Improvements	In Design	\$9M	Improvements to the filter process. Will include a new building to store chemicals, various filter automation upgrades, a new backwash supply pump and pipeline, and a new laboratory.
McClure Outlet Conduit Rehabilitation	In Design	\$19M	Improve dam safety and operational capabilities. Work will include spillway modifications, dam embankment, and outlet works.
San Juan Chama Return Flow Project	In Design	\$40-60M	Pumps and pipe sufficient to return reclaimed San Juan Chama water to the Rio Grande for a return flow credit allowing a like amount of additional diversion at BDD.
BDD Diversion Upgrades	In Alternatives Evaluation Phase	\$50-70M	Redesign and construct diversion and initial sediment removal facilities at Buckman Direct Diversion (BDD) to reduce the amount of sediment that is pumped through miles of pipe and almost one thousand feet up to the BDD Water Treatment Plant. Project managed by BDD and the BDD Board which is jointly owned with Santa Fe County and two Las Campanas entities.



› Nichols Dam
Rehabilitation work.



› CRWTP flocculation and
sedimentation basin upgrades.

Water 2100 Update

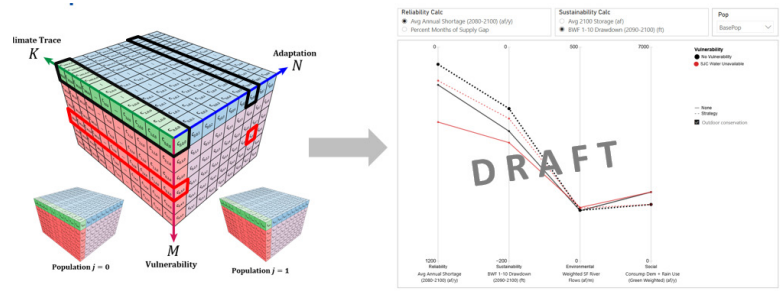
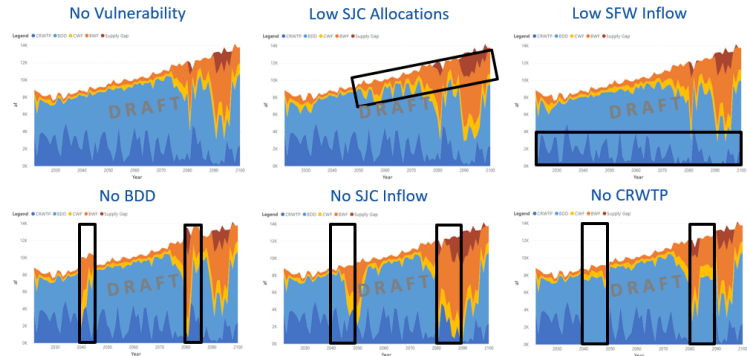
Long-range planning for a sustainable water future

About Water 2100

Water 2100 is CoSFW’s long-range integrated water resources plan, being developed to ensure a reliable, sustainable water supply through the end of the century. The plan will consider projected population growth, supply variability under climate change scenarios, and adaptation strategies to meet future demand, with public feedback throughout the process.

Where We Are

CoSFW has completed water demand projections and has developed a model called “STEWARDS” (Systems Tool for Evaluating Water Resource Decisions and Strategies). STEWARDS represents our water system and simulates our water supplies under a wide range of future hydrologic conditions and allows us to evaluate the effectiveness of adaptation strategies in meeting our future demand. CoSFW is currently working with the United States Bureau of Reclamation (USBR) to acquire future hydrologic projections of river flows under climate change using the best available science.



➤ Technical tools used in the STEWARDS model to assess future scenarios.



What’s Next

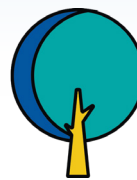
Once the projected river flows are provided by USBR, CoSFW will begin public engagement on the plan. Future conditions will be presented, based on the demand and supply projections described above. Adaptation strategies will be developed and ranked according to their ability to meet four competing goals: reliability, water supply sustainability, river flows, and use of water for green space, under a wide range of future conditions.



RELIABILITY



SUSTAINABILITY



GREEN SPACE



RIVER FLOWS

Conservation Highlight

Empowering our community to use water wisely

1.6 AF

Water Saved

Through All Programs in 2025

\$25.9k

Customer Rebates Paid

Via Rebate Programs

89

Estimated Gallons Per Capita
per Day Demand

New Conservation and Sustainability Section

The City of Santa Fe has established a new Conservation and Sustainability Division within the Public Utilities Department, expanding the former Water Conservation Division to include Sustainability and Keep Santa Fe Beautiful (KSFB). Previously housed within Environmental Services, these programs are now aligned to strengthen a more integrated, citywide approach to environmental stewardship.

A key priority is building out the division's capacity through new staff positions across each program and recruitment of members for the KSFB nonprofit Board of Directors.

The Water Conservation Committee, now chaired by Councilor Bustamante, will continue to advise the City on water policy, public education, and strategies to protect Santa Fe's limited water resources. **The Sustainability section** advances energy efficiency, renewable energy, the water–energy nexus, waste reduction and nature-based solutions. KSFB will operate with a nonprofit board, mobilizing volunteers for cleanups, Adopt-a-Median, and community art. Together, these efforts enhance conservation, ecological health, equity, and quality of life for Santa Fe residents.



> Members of the new Conservation and Sustainability Division provide information to the public at a community event.

Sustainability Program Update

The Sustainability Program within the City of Santa Fe's Conservation & Sustainability Division is advancing key initiatives to reduce greenhouse gas emissions and achieve carbon neutrality by 2040. With the built environment and transportation as primary emissions sources, the program focuses on energy efficiency in buildings, renewable energy expansion, and sustainable transportation solutions.

Current efforts include the Community Energy Efficiency Development (CEED) program to improve energy performance in homes, Community Solar to expand access to renewable energy, and Fleet Electrification to transition City vehicles to zero-emission alternatives. Additional priorities include advancing the water–energy nexus, expanding waste reduction programs, and strengthening urban forestry to enhance climate resilience.

Together, these initiatives reduce emissions, improve air quality, and enhance quality of life for Santa Fe residents while positioning the City as a leader in local climate action.

Other Highlights

Additional Updates & Milestones

Grants and Awards in 2025

In 2024, CoSFW applied for a grant as part of the U.S. Bureau of Reclamation’s WaterSMART program. In early 2025, CoSFW was notified that we are awarded \$5.3 million in grant funding. This funding is tied to the San Juan Chama Return Flow Project, with this new grant the total federal funding for the project is now at 25% of total costs.

CoSFW received a grant from the New Mexico Water Trust Board in the amount of \$2.5 million. This funding is being used to fund the design phase of the McClure Dam Rehabilitation work.

In addition to these grants, Congresswoman Teresa Leger Fernández secured \$2.3 million in Community Funding as part of the federal FY2026 spending minibus. This funding will be used to fund upgrades to the Paseo Real Water Reclamation Facility.



› From left, Interim Public Utilities Department Director Jesse Roach, Wastewater Management Division Director Michael Dozier, Mayor Michael Garcia, and U.S. Rep. Teresa Leger Fernández at a news conference where Leger Fernández presented a \$2.3 million check to the city.

New Technologies

The CoSFW team has been working hard over the past year to incorporate new technologies to increase efficiency. One such project that has been completed is the BDD accounting dashboard. This dashboard tracks water usage, water rights, and permit requirements in near real time for the partners of the BDD. With its completion the time and effort required to complete state mandated reports has decreased significantly.



Thank You to Our Community

Every drop saved reflects the commitment of our customers, our partners, and our team. Conservation is not just a program — it is a value we share. Together, we are building a water-secure future for Santa Fe.

CITY OF SANTA FE WATER

santafenm.gov/public-utilities/water

505-955-4333