

A. CHRISTOPHER PURVIS ARCHITECTS

Historic Districts Review Board
City of Santa Fe, City Hall
Santa Fe NM 87501

Wednesday, March 11, 2026

RE: 1489 Upper Canyon Road
Enclosed
A-4 Gate drawing 3-11-2026
Gate photographs
Status Photograph

To Gary Moquino and
Members of the Historic Districts Review Board

For Clarification purposes The house is listed as contributing in the downtown and east side please see attached city designation.

The 4'2" rusted steel gate (mounted 5" off the ground) that is currently installed on the property did not receive HDRB approval when it was installed. We thanks the board for entertaining options for a solution to this problem.

We propose three different ways to approach this ,all of which involve removing three and a half feet of wall adjacent to old garage and installing a coyote gate in that location. Also all of the options could be painted or left as rusted .

- 1) remove steel panels and install wooden balusters
- 2) remove all steel panels and install vertical stained wood boards in the openings
- 3) remove steel panels and install a 2x2 hardware cloth in the openings

EXCEPTION CRITERIA AND RESPONSES:

Exception to 14-4.6(G)(2) Downtown and Eastside Historic District Design Standards: The applicant requests an exception for the use of a 55" high 20 foot wide steel gate

(i) Do not damage the character of the district

Applicant Response: The use of rusted steel for the gate material does not damage the character of the district because the patina on the steel and the pattern of the frame softens the effect of the steel so that it blends with the color of the other elements to be found in the streetscape. We propose several ways to achieve this effect

(ii) Are required to prevent a hardship to the applicant or an injury to the public welfare

Applicant Response: This gate is required to stop the parking of people using the dorothy stewart trail within the courtyard which creates an liability and unsafe environment for the owners and the public.

There are several forms this gate could take we submit them to see which would solve the problem best

(iii) Strengthen the unique heterogeneous character of the City by providing a full range of design options to ensure that residents can continue to reside within the historic districts

Applicant Response: This lot has a narrow area to use and so allowing the owners to have a gate there allows them to retain the safety of their yard and making it in steel will be more durable than other gate materials which is part of the heterogeneous character of santa fe in the 21st century.The options provided give several solutions to this

Please call if you have any questions on the project 982-5461

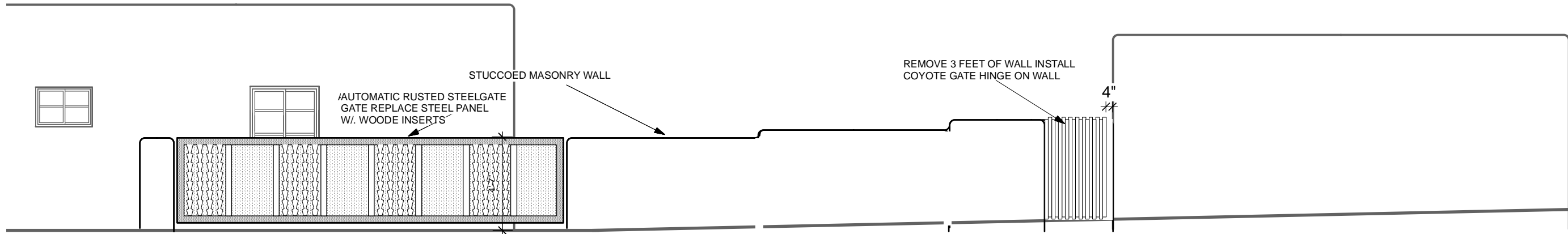
Sincerely,



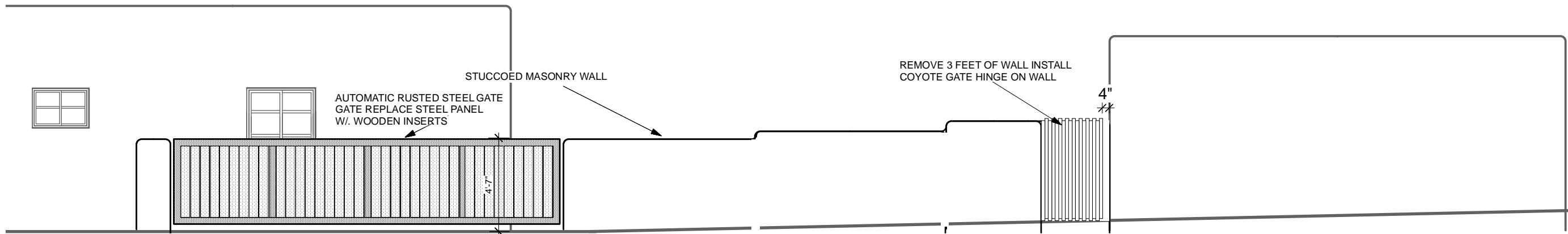
Christopher Purvis.



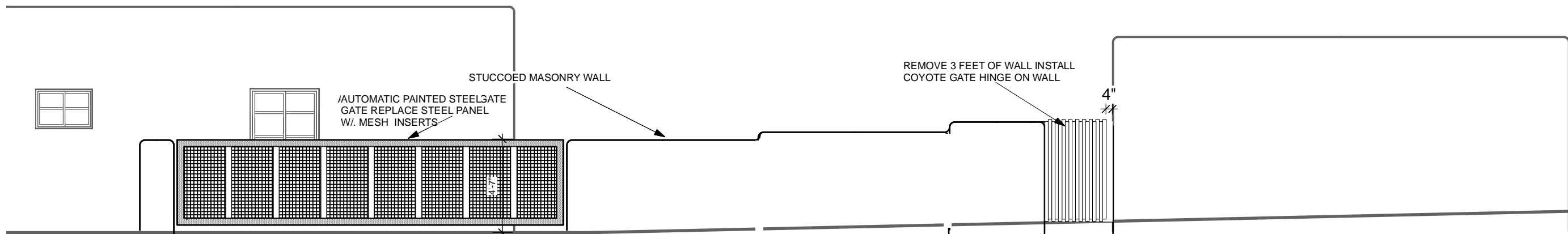
WALL AND GATE SOUTH SIDE 1489 CANYON ROAD



1 SOUTH ELEVATION
Scale: 3/16" = 1'-0"



4 SOUTH ELEVATION
Scale: 3/16" = 1'-0"



3 SOUTH ELEVATION
Scale: 3/16" = 1'-0"