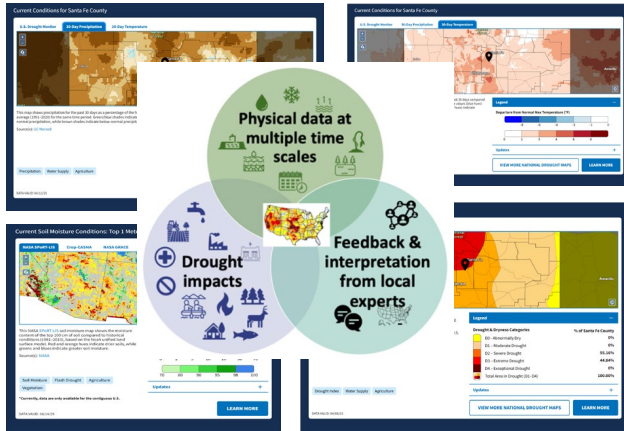


Water Resource Indicator (WRI)

WRI Components

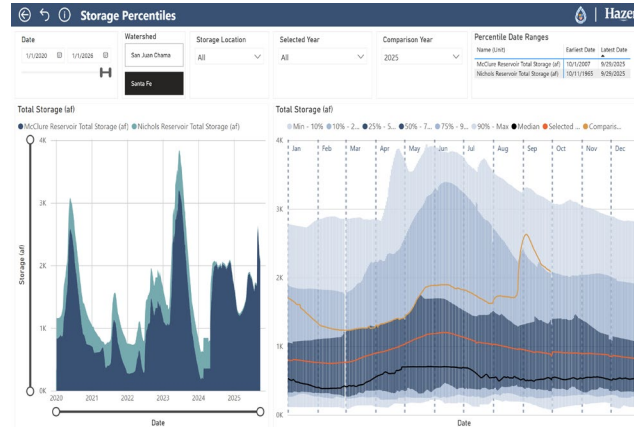
1. U.S. Drought Monitor 30% Captures Regional Conditions & Expert Analysis



Drought Monitor Conditions for Santa Fe County

- Precipitation & Weather Data
- Soil Moisture & Evapotranspiration
- Regional Streamflow & Hydrologic Conditions
- Temperature & Atmospheric Drivers
- Local Expert Reports & Impact Data
- **Does not project or forecast**

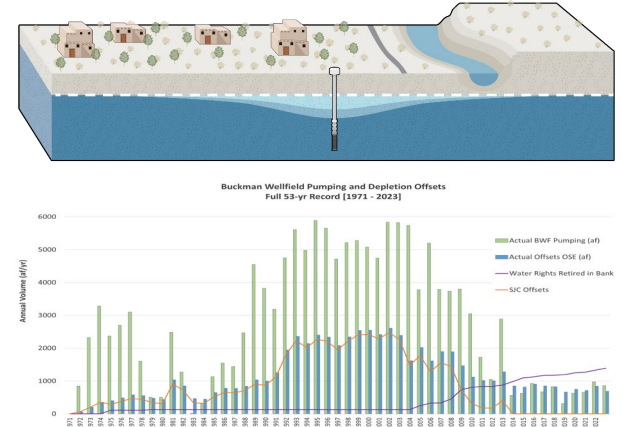
2. Surface Water 30% Captures Reliability & Seasonal Flows



Surface Water Considerations

- Current Reservoir Levels (SJC & Native)
- BDD and Canyon Road Production Capacities
- Historical Production Demand (Past 5 years)
- Permit Constraints

3. Groundwater 40% Captures Sustainable Use & Longer Trends

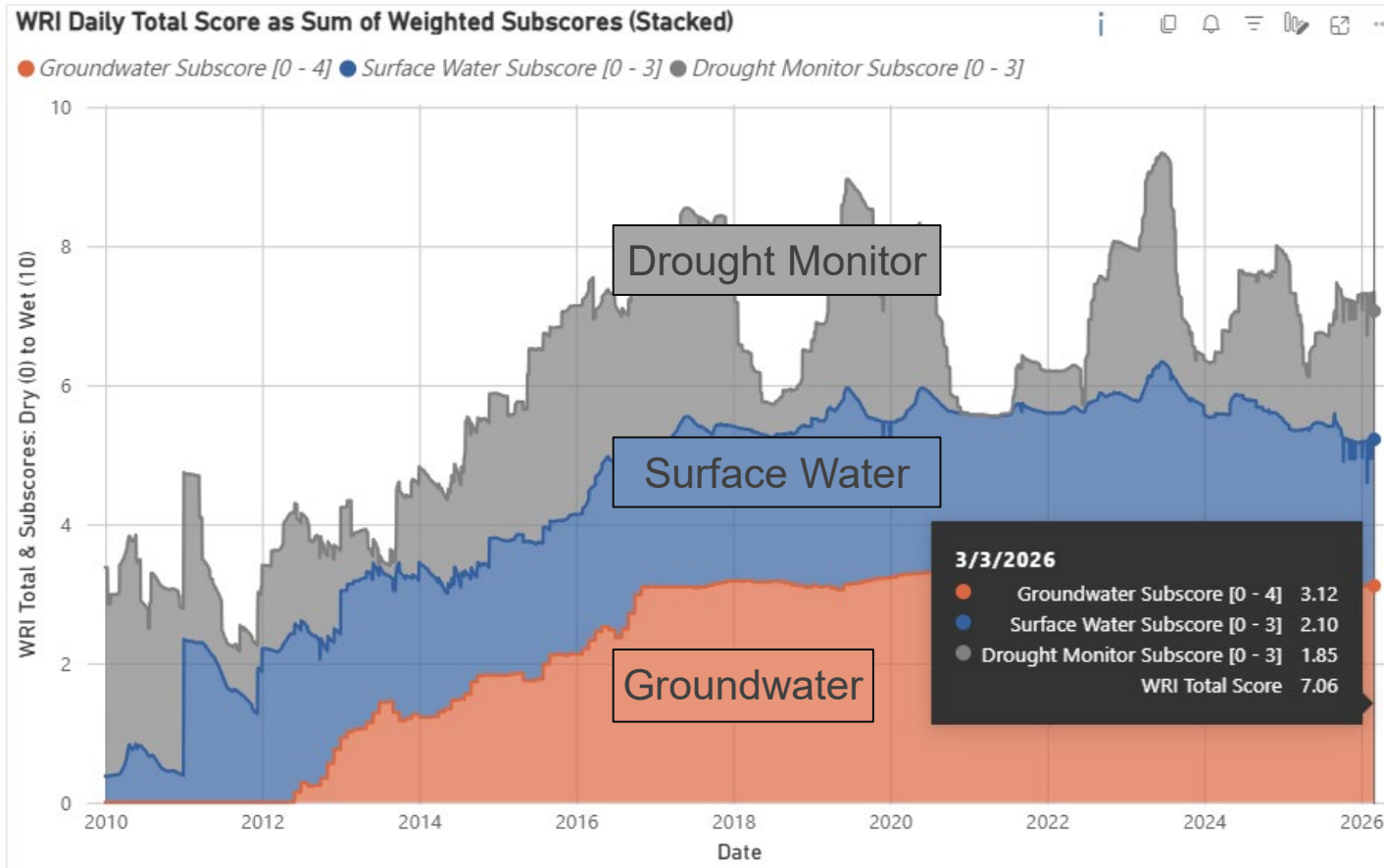


Groundwater Considerations

- BWF Trailing Avg Pumping Rates (Past 10 years)
- CWF Trailing Avg Pumping Rates (Past 3 years)
- Historical Production Demand (Past 5 years)
- Current Delivery Capacities



Water Resources Indicator



Current Daily WRI = 7.06

WRI is our tool to evaluate seasonal outlook. It shows:

1. Drought score is still favorable
2. We have enough surface water in storage
3. Groundwater is available as needed

*Note:

WRI score here is slightly lower than actual.

Nichols Reservoir was drained in July 2024 and is now 80% full, but reservoir level instrumentation is not yet installed.

WRI Dashboard



Water Resources Indicator (WRI)



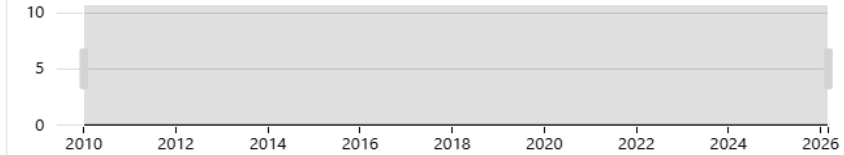
Data Date Range

1/1/2010 3/11/2026

Data Valid: 3/3/2026

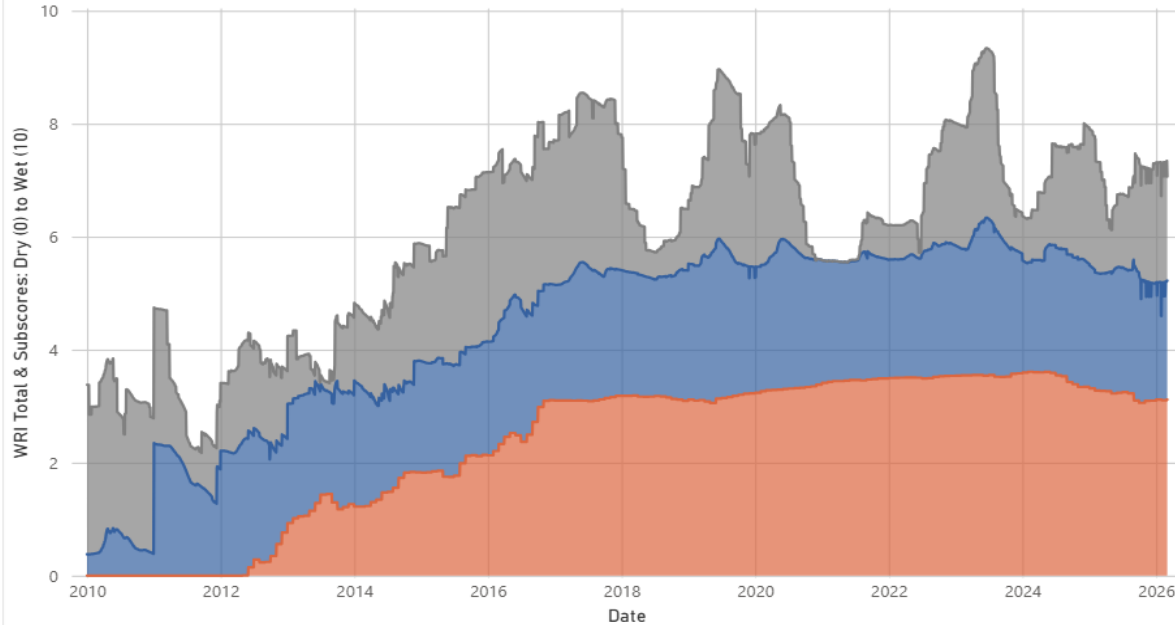
Current WRI: 7.25

WRI Time Slider

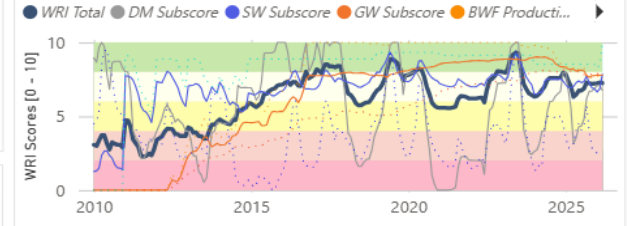


WRI Daily Total Score as Sum of Weighted Subscores (Stacked)

● Groundwater Subscore [0 - 4] ● Surface Water Subscore [0 - 3] ● Drought Monitor Subscore [0 - 3]



WRI Monthly Unweighted Scores (All Components) [0 - 10]



WRI Monthly Average Scores (All Components) Unweighted [0 - 10]

Date Monthly	WRI Total	GW Subscore	SW Subscore	DM Subscore
3/1/2026	7.25	7.79	7.84	6.
2/1/2026	7.29	7.76	6.87	7.
1/1/2026	7.23	7.79	6.65	7.
12/1/2025	7.22	7.74	6.85	6.
11/1/2025	7.19	7.74	6.94	6.
10/1/2025	7.24	7.65	7.23	6.
9/1/2025	7.29	7.75	7.74	6.
8/1/2025	6.88	8.07	7.36	4.
7/1/2025	6.74	8.12	7.28	4.
6/1/2025	6.74	8.10	7.39	4.
5/1/2025	6.46	8.06	7.26	3.
4/1/2025	6.31	8.17	7.01	3.
3/1/2025	7.04	8.18	6.93	5.
2/1/2025	7.37	8.19	6.94	6.
1/1/2025	7.85	8.29	7.14	7.
12/1/2024	7.94	8.35	7.39	7.
11/1/2024	7.60	8.35	7.54	6.
10/1/2024	7.59	8.47	7.49	6.
9/1/2024	7.59	8.57	7.52	6.



END