

West Alameda St. e. of St. Francis Dr.: Proposal for Striped Shoulders / Bike Lanes upon repaving

- Westbound: 621 W Alameda to Las Crucitas St. (750 ft.)
- Eastbound: St. Francis Dr. to 621 W Alameda (1,000 ft.)

(621 W Alameda is the west end of legal parking on north side)

Benefits

1. Provide space for cyclists on road
2. Provide buffer space for River Trail where located back-of curb
3. Provide buffer space for north-side sidewalk

Requirements

1. Replace two-way turn lane with dedicated left-turn lanes for Villa Alegre St. and 627 W. Alameda (east driveway only)
2. Define / Sign as “No Parking” w. of 621 W Alameda

Benefit: Provide Buffer Area for River Trail where located Back of Curb



Benefit: Provide Buffer Area for River Trail where located Back of Curb



Benefit: Provide Space for Bicycles on Road

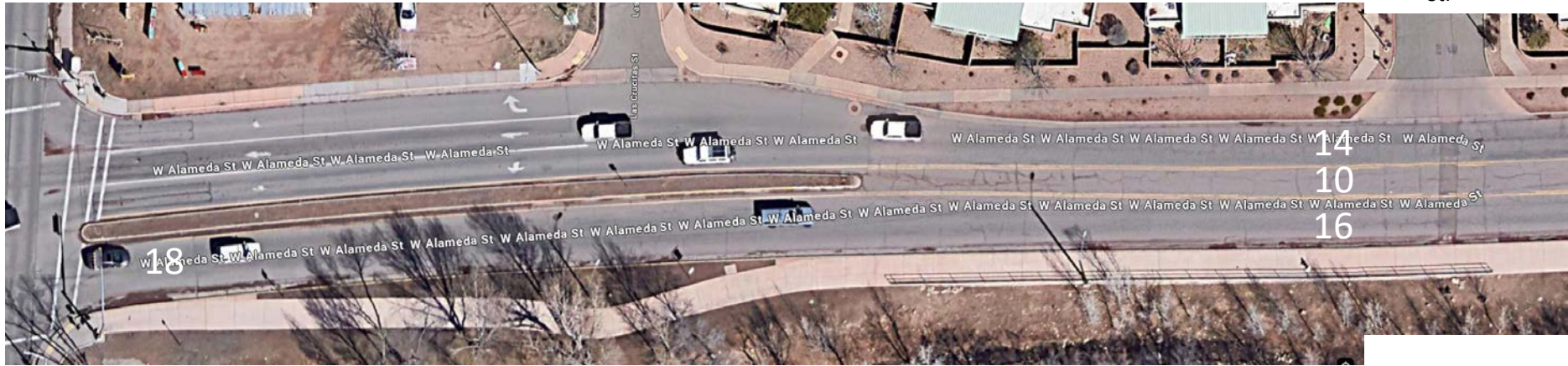


Benefit: Provide Space for Bicycles on Road



Las Cruces
St.

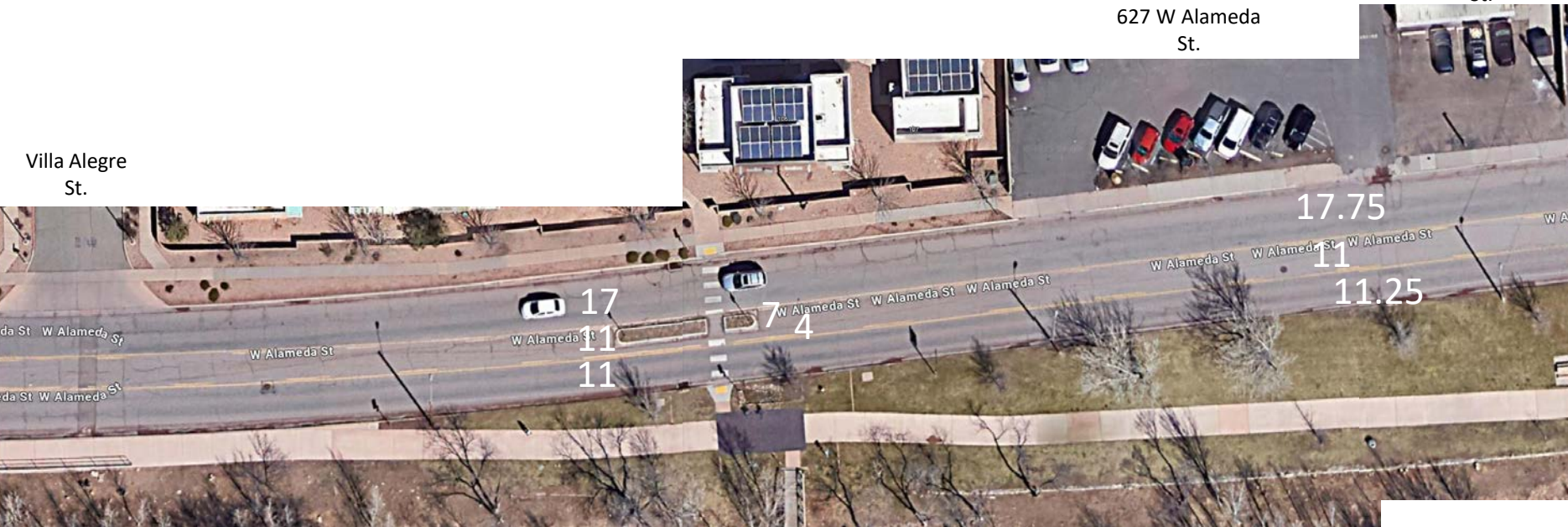
Villa Alegre
St.



Villa Alegre
St.

627 W Alameda
St.

621 W Alameda
St.



Las Cruces St.

Villa Alegre St.



621 W Alameda St.

627 W Alameda St.

Villa Alegre St.

