

Santa Fe Forward

Scenario Frameworks Discussion

Quality of Life Committee

Wednesday, March 4, 2026

Overview

1. Project status
2. Next Steps/Tentative Schedule
3. DRAFT scenario frameworks



Schedule

- 1. Stage Gate 1 (Info Gathering & Assessment Report):**
 - Has gone to Planning Commission & TWG (joint workshop), Community Partners and Governing Body
- 2. Stage Gates 2 & 3 (Mission-Vision-Strategies & Scenario Frameworks):**
 - Has gone to Planning Commission & TWG (joint workshop)
 - Needs to go to Community Partners and the Public
 - Needs to go to Governing Body

3. Stage Gate 3 (Develop the Preferred Plan)

4. General Plan adoption

5. Implementation Plan



Dept. Leadership

1. Public Works & Utilities

- Try to capitalize on the General Plan's Social Pinpoint to gather public input for the Water 2100 Plan efforts. (They can also use our Pop. Projections)
- Emphasize additional greenspaces in frameworks- they augment our water availability.

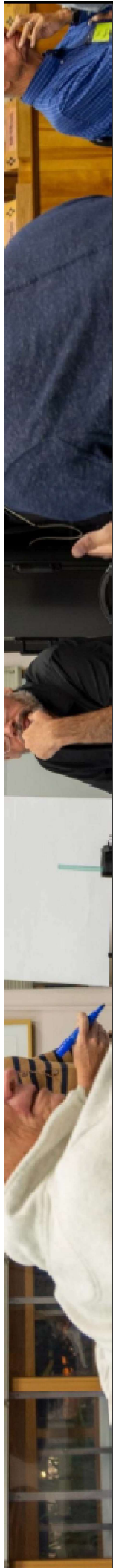
2. Parks

- Balance new park investments with maintaining what we already have, as well as the backlog of deferred maintenance.
- Possibly consider re-imagining unused areas of parkland for in-demand community facilities.
- Use new 'green infrastructure' corridors in the frameworks to decrease pressure on delicate stormwater systems.

3. Up-Next: MPO, Transit & Complete Streets

4. Up-Next: Affordable Housing





Frameworks Context and Overview

Mission, Vision and Strategies



Mission Statement

Faithful to our heritage, focused on our present and forging our future, Santa Fe Forward shapes *the City Different*, sets priorities and opens opportunities for all.

Vision Statement

Santa Fe supports and respects the needs and growth of all in harmony with our heritage and environment, thriving today and tomorrow as *the City Different*.





— Values/Priorities of greatest alignment

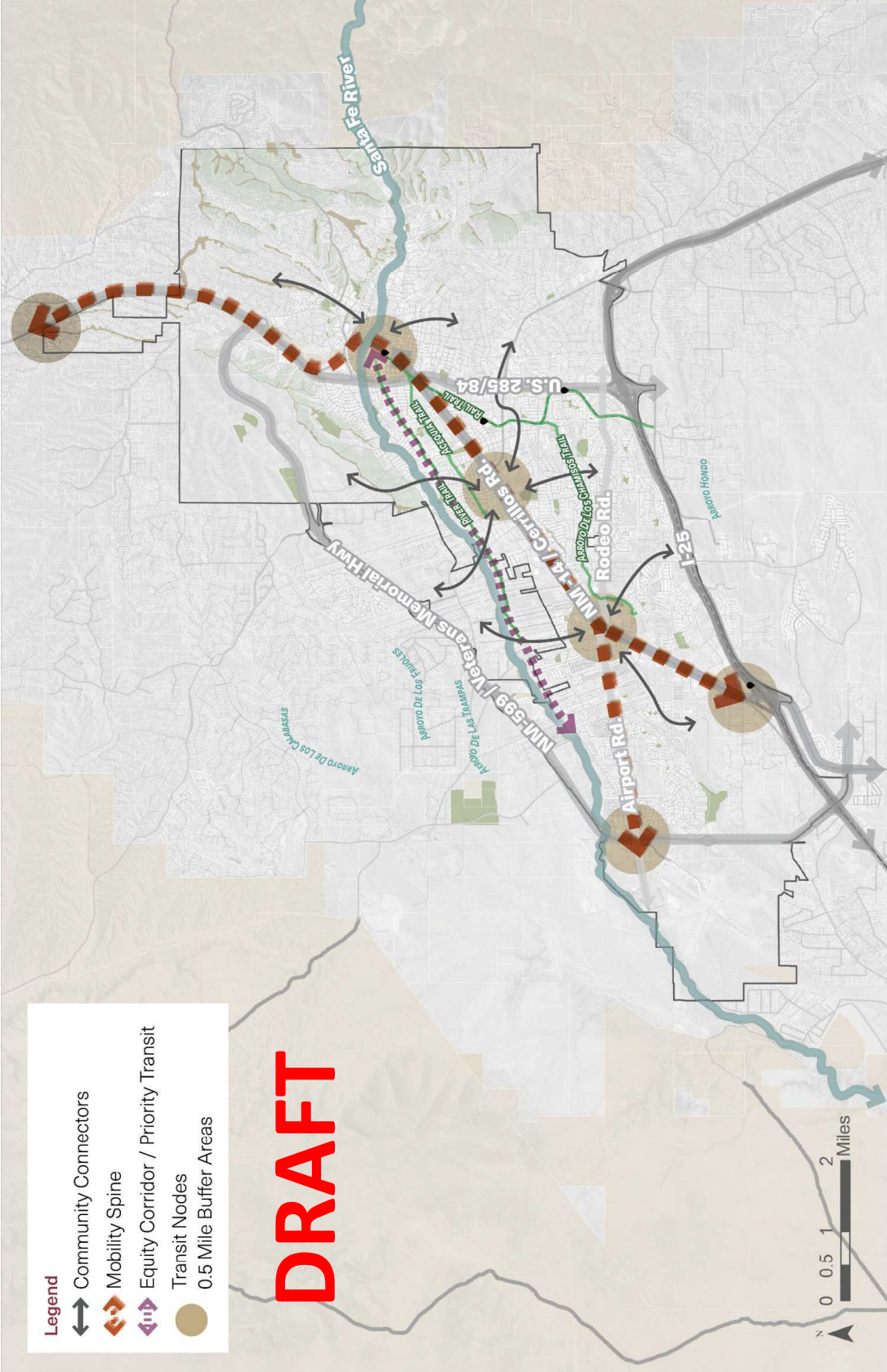
Top Priorities of the General Public; PC & TWG; and Community Partners

1. **Housing & affordability**
2. **Community facilities & services**
3. **Environmental stewardship & resilience**
4. **Transportation & mobility**

Legend

-  Community Connectors
-  Mobility Spine
-  Equity Corridor / Priority Transit
-  Transit Nodes
-  0.5 Mile Buffer Areas

DRAFT



Connects people, places and productivity, broadly increasing access to opportunities, providing more choices that are safe and reliable.

A crosstown and regional mobility spine connected to the community by shared mobility corridors.

- Robust transit to advance equity and provide for an attractive mobility choice—local and regional.
- Community connectors that are designed to put moving people first and serve as destinations for nearby neighborhoods.
- A unified approach that strengthens the City's ability to accommodate and deliver coordinated and transformative transportation, land use and urban design projects.

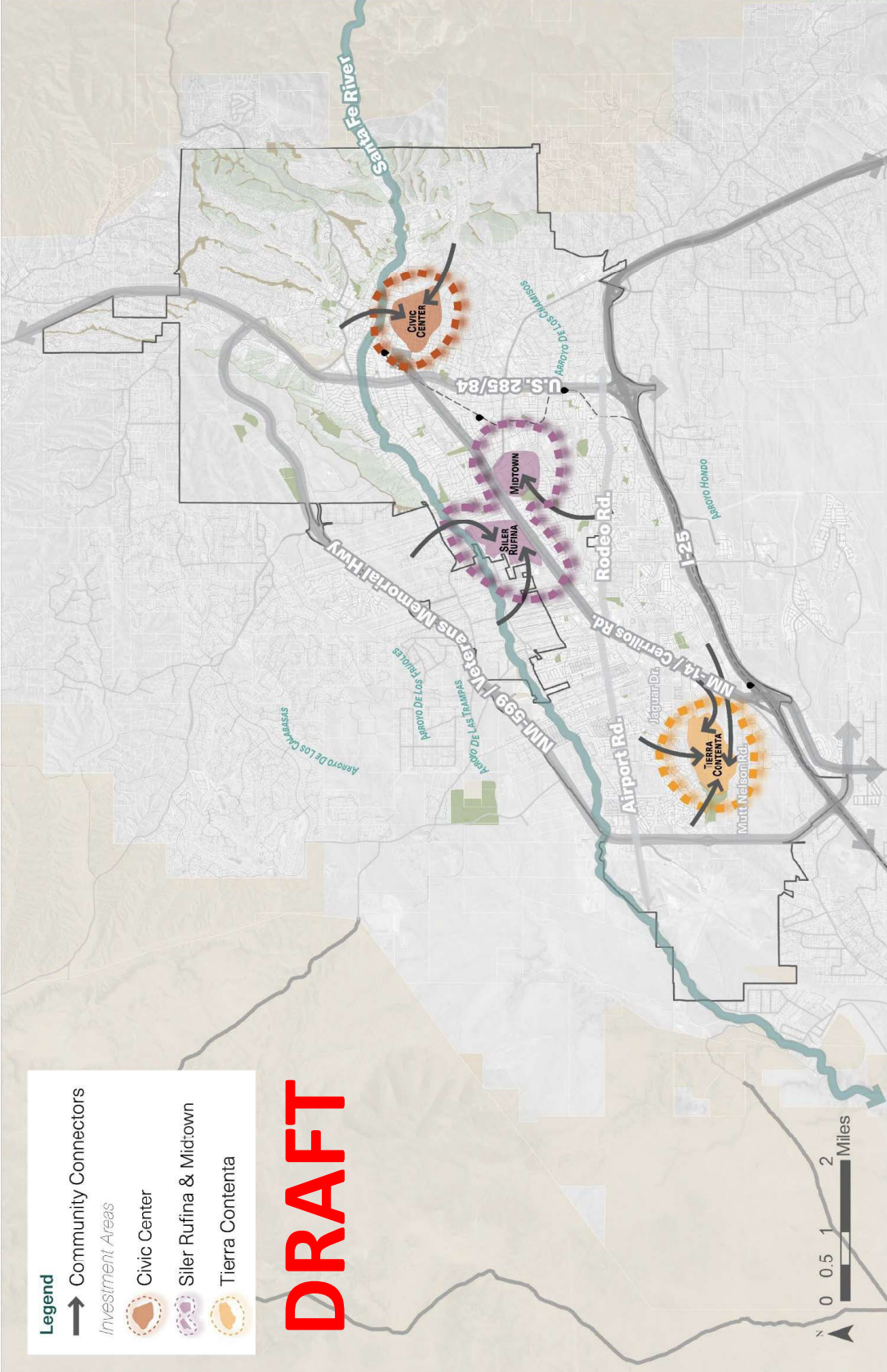
CONNECTIONS FRAMEWORK

FORM		FUNCTION		INVESTMENT			
 <p>Concentrate infill and missing middle housing along safe and calm community connector streets.</p>	 <p>Support transit-adjacent businesses and retail through reinvestment mechanisms.</p>	 <p>Create welcoming hubs at transit stations with linear parks, mobility hubs, multimodal plazas, and public art.</p>	 <p>Improve bus service to connect equity communities with high capacity transit.</p>	 <p>Expand mixed-use corridor housing and transit-oriented multifamily development to support more frequent mobility service.</p>	 <p>Promote compact, transit-supported employment clusters along key arterials to boost ridership and reduce auto dependence.</p>	 <p>Prioritize protected bike lanes and pedestrian infrastructure to support safe, active, and accessible movement throughout the city.</p>	 <p>Reduce long-term infrastructure costs through compact growth, green design, and efficient service patterns.</p>

Legend

- Community Connectors
- Investment Areas
- Civic Center
- Siler Rufina & Midtown
- Tierra Contenta

DRAFT



Strengthens and creates substantial, thematic places that enhance community life, reinforce local character and attract people, services and investment.

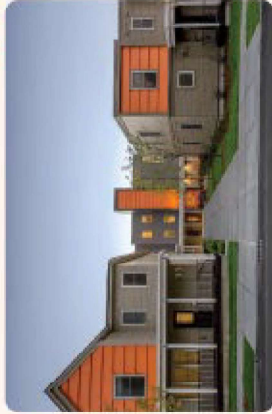
Three strong places to give all Santa Feans access to amenities and services aligned with key nearby characteristics and needs.

- Distinct, walkable places that are both organic and planned to add variety to Santa Fe, attracting people and investment.
- A constellation of nearby existing and future smaller, focused walkable districts connected to each of the major three places.
- Guides urban design and placemaking, in coordination with mobility infrastructure and services.



PLACES FRAMEWORK

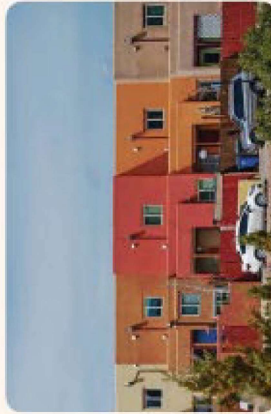
FORM



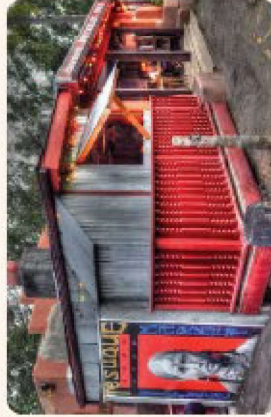
Expand culturally rooted housing including family compounds, casitas, gentle infill, and multifamily to reinforce neighborhood identity.



Support neighborhood-scale, locally owned shops and integrate micro-retail into community hubs.



Increase multigenerational living options including senior villages, accessible housing, and community health hubs.



Strengthen community stability through cultural nodes including mercados, maker spaces, culture clusters, and local land stewardship.

FUNCTION



Enhance plazas, street life, and public spaces with vibrant programming, outdoor markets, and cultural activity.

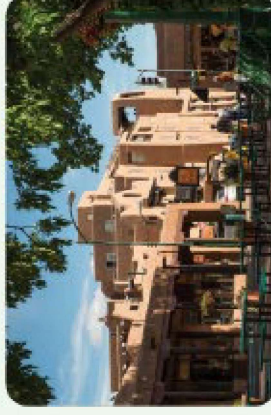


Prioritize walkable, bike-friendly neighborhoods with short local trips, greenways and acequia trails.

INVESTMENT



Focus growth inward through small-scale infill incentives, cultural grants, and community driven partnerships.



Support historic neighborhoods and essential-service districts by promoting housing stability and long-term community investment.

Legend

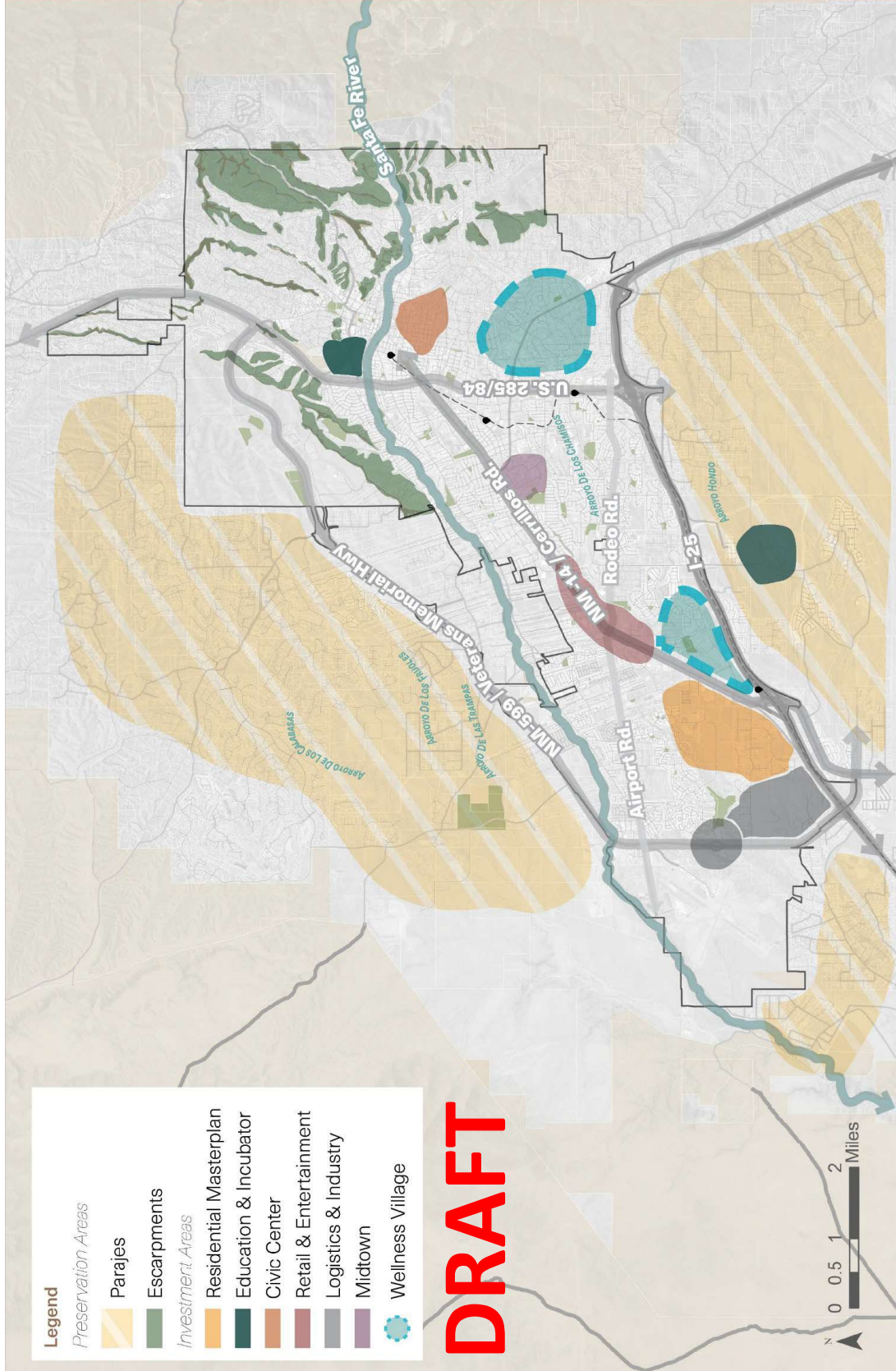
Preservation Areas

- Parajes
- Escarpments

Investment Areas

- Residential Masterplan
- Education & Incubator
- Civic Center
- Retail & Entertainment
- Logistics & Industry
- Midtown
- Wellness Village

DRAFT



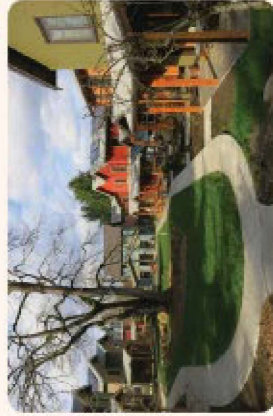
Builds Santa Fe's ability to adapt to a changing climate and thrive through economic diversification, expanded housing choices, and protection of its unique natural setting.

Bold moves with high impact to address gaps in meeting vital needs, building socioeconomic and climatic resilience.

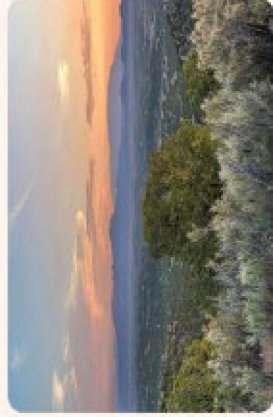
- Clean industrial, logistics, and innovation districts to strengthen economic diversity.
- New housing areas that expand options while maintaining Santa Fe's landscape and character.
- Preserved natural landscapes and traditional land patterns, including regional Paraje neighborhoods.

RESILIENCE FRAMEWORK

FORM



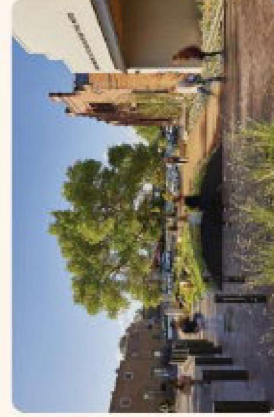
Support conservation-oriented and clustered housing patterns while allowing strategic infill where infrastructure already exists.



Strengthen Santa Fe's core economic drivers (tourism, arts and culture, education, and government) through environmentally-sound development.

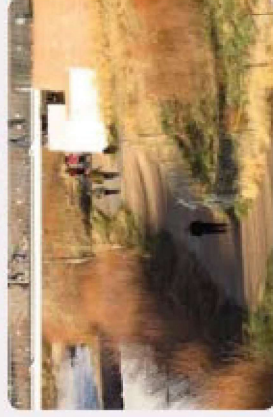


Expand arts, culture, design, and creative industries as part of a sustainable economic system.



Advance green infrastructure, trail systems, and water conservation efforts throughout the city.

FUNCTION



Restore the Santa Fe River ecosystem and arroyos with ecological parks, shade structures, and resilience-by-design strategies improvements.

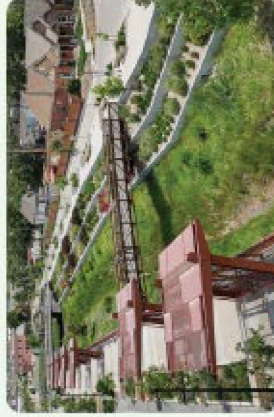


Elevate trails and multi-modal corridors as the backbone of mobility, supported by green streets, habitat corridors, and transit routes.

INVESTMENT



Grow innovation sectors, light industrial uses, logistics, and eco-tourism that align with resource-efficient land uses.



Prioritize resilience funding in underserved and climate-vulnerable neighborhoods.



Preview: Place Types

DRAFT

- **Neighborhoods**

- Legacy Neighborhood
- Contemporary Neighborhood
- Everyday Neighborhood

- **Corridors**

- Commerce Corridor
- Community Corridor

- **Districts**

- Heritage and Tourism District
- Arts and Culture District
- Family and Wellness District

- **Engines**

- Makers and Services Engine
- Production and Logistics Engine

- **Landscapes**

- Living Link Landscape
- Conservation Vista Landscape