

City of Santa Fe, New Mexico

Attachment A **Maps and Photos**

- 1. Aerial View**
- 2. Street View**
- 3. Current Zoning Map**
- 4. Future Land Use Map**

Aerial View

The property is east of the Cerrillos Rd and St. Francis intersection within the Don Gaspar Area Historic District. The lot lines, as proposed via the Certificate of Compliance, are approximated with the yellow line. The green hatch area is the 'lease area' between 315 Sena St and 727 Gomez Ln. The lot at 315 Sena St is approximately 4,006 sq ft.



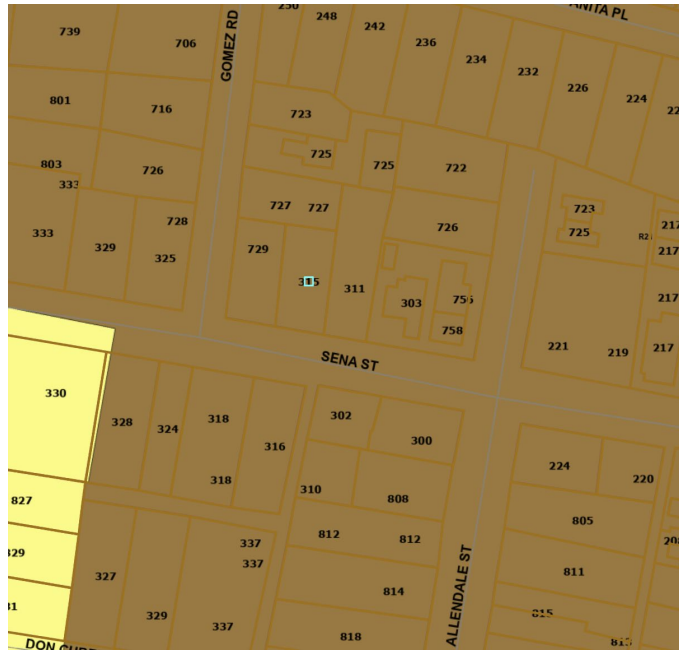
Street View

Photo looking north towards the property from Sena St.



Current Zoning Map

The property is zoned R-21 (Residential, 21 dwelling units per acre), shown in brown on the map below.



Future Land Use Map

The Future Land Use Map (FLUM) designates the parcel as “7-9 dwellings per acre” (Brown).

