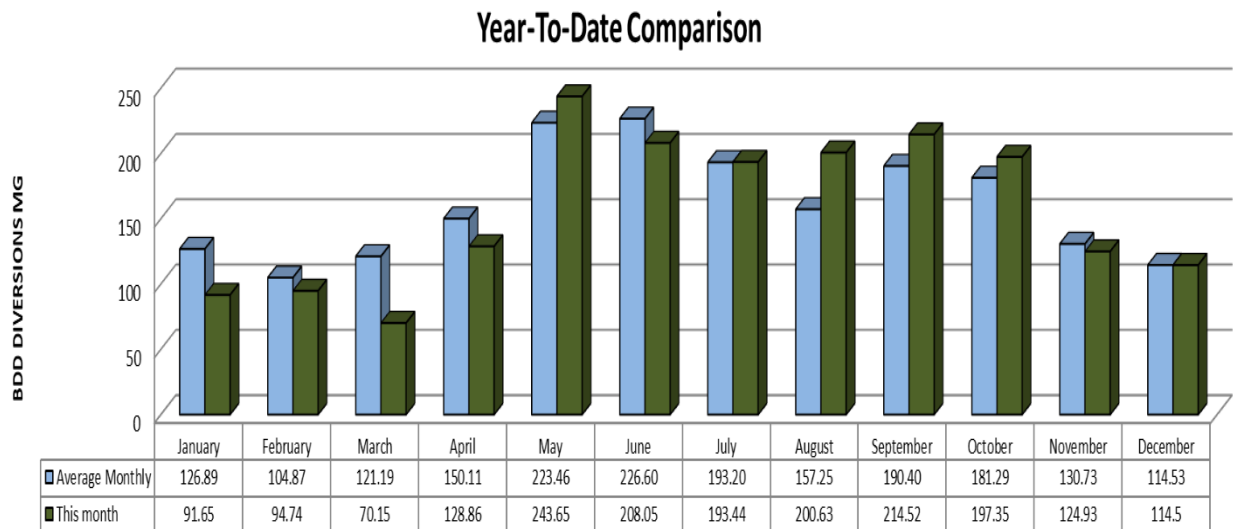


Date: January 9, 2025
To: Buckman Direct Diversion Board
From: Matthew Sandoval, BDD Operations Superintendent
Subject: Update on BDD Operations for the Month of December 2024

ITEM:

1. This memorandum is to update the Buckman Direct Diversion Board (BDDDB) on BDD operations during the month of December 2024. The BDD diversions and deliveries have averaged, in Million Gallons Per Day (MGD), as follows:
 - a. Raw water diversions: 3.70 MGD
 - b. Drinking water deliveries through Booster Station 4A/5A: 3.61 MGD
 - c. Raw water delivery to Las Campanas at BS2A: 0.0 MGD
2. The BDD provided approximately 54.3% of the water supply to the City and County for the month.
3. The BDD year-to-date diversions are depicted below:



Regional Water Overview

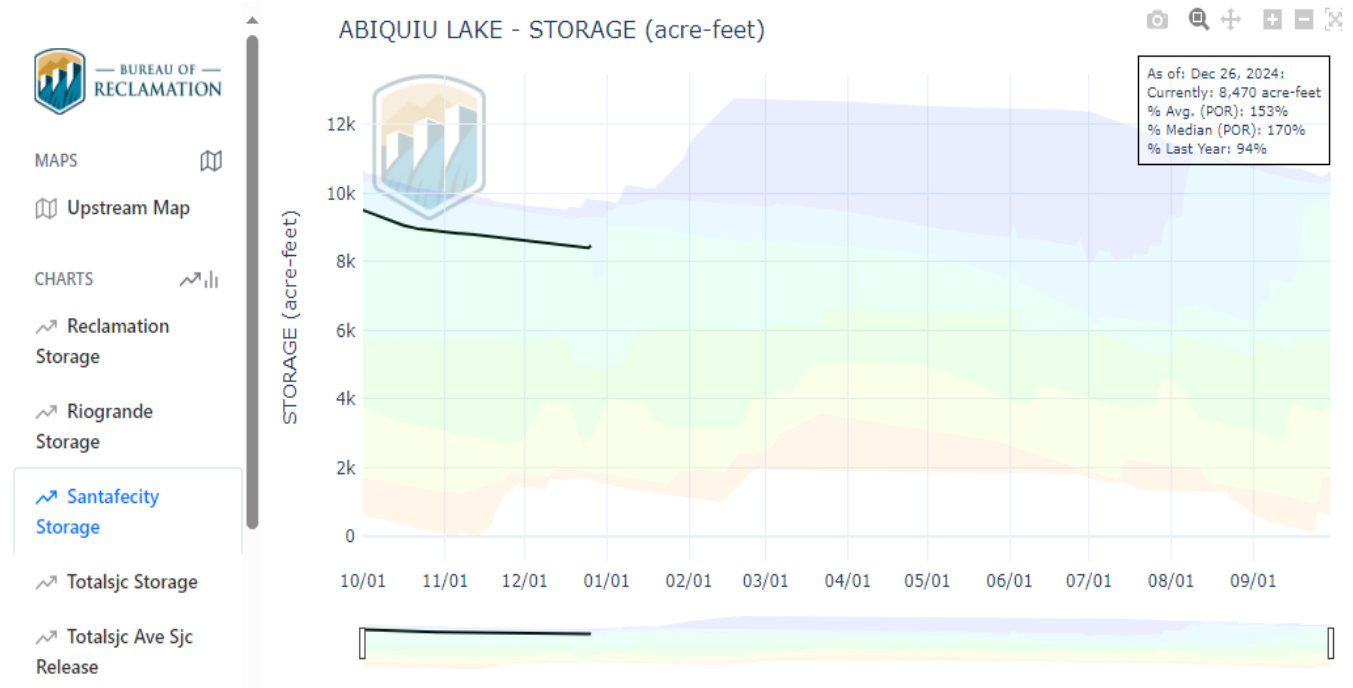
Daily metered regional water demand for the month of December 2024 is approximately: 5.9 MGD

Rio Grande flows for December 2024 averaged approximately 746 CFS (cubic feet per second).

CRWTP reservoir storage: Nichols: 0% McClure: 42.8% Watershed Inflow: 1.10 MGD

City/County/Las Campanas Storage- as updated by partners. As of December 26, 2024 City of SF Abiquiu SJC storage is at about 8470 AF.

As of December 2024 the City of Santa Fe has been allocated 5230AF of 5230AF, and SF County has been allocated 375AF of 375AF of SJCP water.





Buckman Direct Diversion Monthly SJC and Native Diversions								
Dec-24 In Acre-Feet								
Month	Total SJC + Native Rights	SP-4842 RG Native COUNTY	SD-04842-A RG Native VIA SFC LAS CAMPANAS	SJC Call Total	SP-2847-E SJC Call CITY	SP-2847-N-A SJC Call LAS CAMPANAS	SP-2847-E SJC Undiverted CITY	All Partners Conveyance Losses
JAN	283.691	91.173	0.000	192.518	192.518	0.000	0.000	1.986
FEB	293.064	112.967	0.000	180.097	180.097	0.000	0.000	1.858
MAR	217.014	95.914	0.000	121.100	121.100	0.000	0.000	1.475
APR	396.998	255.245	67.230	74.523	74.523	0.000	0.000	1.004
MAY	750.899	395.038	123.438	232.423	232.423	0.000	0.000	1.347
JUN	642.136	371.118	7.114	263.905	263.905	0.000	0.000	1.743
JUL	652.169	320.362	74.513	257.295	257.295	0.000	0.000	1.166
AUG	647.277	0.000	0.000	659.885	659.885	0.000	12.608	3.210
SEP	666.797	0.000	0.000	776.587	776.587	0.000	109.791	3.604
OCT	612.559	0.000	0.000	631.170	631.170	0.000	18.612	5.811
NOV	385.574	154.074	0.000	231.501	231.501	0.000	0.000	1.755
DEC	353.083	214.183	0.000	138.900	138.900	0.000	0.000	1.053
TOTAL	5,901.261	2,010.073	272.294	3,759.904	3,759.904	0.000	141.010	26.014

In Million Gallons								
Month	Native COUNTY	SFC Native Las Campanas	SJC TOTAL	SJC CITY	SJC Las Campanas	SJC Undiverted CITY	All Partners Diversions	
JAN	29.698	0.000	61.974	61.974	0.000	0.000	91.672	
FEB	36.797	0.000	57.976	57.976	0.000	0.000	94.773	
MAR	31.242	0.000	38.910	38.910	0.000	0.000	70.153	
APR	83.142	21.899	23.913	23.913	0.000	0.000	128.954	
MAY	128.677	40.208	74.921	74.921	0.000	0.000	243.805	
JUN	120.885	2.317	84.961	84.961	0.000	0.000	208.164	
JUL	104.352	24.271	82.879	82.879	0.000	0.000	211.503	
AUG	0.000	0.000	208.462	208.462	0.000	4.107	208.462	
SEP	0.000	0.000	214.522	214.522	0.000	35.762	214.522	
OCT	0.000	0.000	197.347	197.347	0.000	6.062	197.347	
NOV	50.187	0.000	74.729	74.729	0.000	0.000	124.916	
DEC	69.766	0.000	44.837	44.837	0.000	0.000	114.604	
TOTAL	654.747	88.695	1,165.432	1,165.432	0.000	45.932	1,908.874	



Buckman Direct Diversion Monthly SJC and Native Diversions								
Dec-23								
In Acre-Feet								
Month	Total SJC + Native Rights	SP-4842 RG Native COUNTY	SD-04842-A RG Native VIA SFC LAS CAMPANAS	SJC Call Total	SP-2847-E SJC Call CITY	SP-2847-N-A SJC Call LAS CAMPANAS	SP-2847-E SJC Undiverted CITY	All Partners Conveyance Losses
JAN	202.766	170.639	0.000	32.127	32.127	0.000	0.000	0.316
FEB	198.863	198.863	0.000	0.000	0.000	0.000	0.000	0.000
MAR	298.509	283.752	0.000	14.757	-0.183	14.940	0.000	0.148
APR	539.513	456.749	68.929	13.835	13.835	0.000	0.000	0.050
MAY	594.828	462.276	132.552	0.000	0.000	0.000	0.000	0.000
JUN	584.178	458.973	125.205	0.000	0.000	0.000	0.000	0.000
JUL	775.090	29.584	0.000	745.506	600.980	144.526	0.000	3.448
AUG	691.219	0.000	0.000	691.305	661.055	30.250	0.086	3.300
SEP	543.466	0.000	0.000	548.792	488.899	59.893	5.325	2.629
OCT	450.861	0.000	0.000	462.141	409.826	52.315	11.280	4.339
NOV	305.383	0.000	0.000	310.512	297.964	12.549	5.129	3.046
DEC	201.257	0.000	0.000	214.254	214.254	0.000	12.996	2.142
TOTAL	5,385.935	2,060.836	326.686	3,033.229	2,718.756	314.473	34.816	19.417

In Million Gallons								
Month	Native COUNTY	SFC Native Las Campanas	SJC TOTAL	SJC CITY	SJC Las Campanas	SJC Undiverted CITY	All Partners Diversions	
JAN	55.583	0.000	10.347	10.347	0.000	0.000	65.930	
FEB	64.776	0.000	0.000	0.000	0.000	0.000	64.776	
MAR	92.427	0.000	4.752	-0.059	4.819	0.000	97.179	
APR	148.778	22.453	4.484	4.484	0.000	0.000	175.714	
MAY	150.579	43.176	0.000	0.000	0.000	0.000	193.755	
JUN	149.503	40.783	0.000	0.000	0.000	0.000	190.286	
JUL	9.636	0.000	240.180	193.965	46.562	0.000	249.817	
AUG	0.000	0.000	222.731	213.366	9.764	0.028	222.731	
SEP	0.000	0.000	176.814	157.483	19.331	1.735	176.814	
OCT	0.000	0.000	148.909	132.288	16.887	3.674	148.909	
NOV	0.000	0.000	100.009	95.960	4.049	1.671	100.009	
DEC	0.000	0.000	68.993	68.993	0.000	4.233	68.993	
TOTAL	671.282	106.412	977.219	876.827	101.412	11.341	1,754.914	