

Ready Santa Fe: Enhancing Public Information and Warning for Santa Fe

Kyle Morgan

City of Santa Fe Office of Emergency Management

What Ready Santa Fe Does

Steady State Operations:

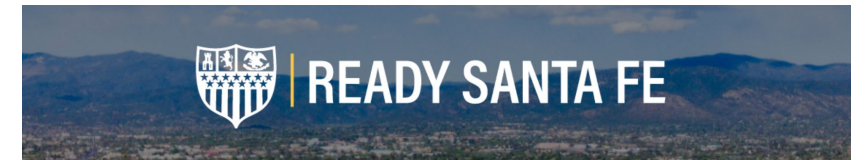
- Visual display of public safety notices, road closures
- Supports Alert Santa Fe by displaying WHERE incidents are happening, who and what is impacted

Disaster Response:

- Scales immediately for evacuation zones and routes
- Shelter locations, points of distributions
- Multiple simultaneous incidents on one map

Preparedness Resources:

- Local situational awareness tools
- Links to geospatial hazard information and emergency planning resources



Current Alerts

Issued: January 15, 2026 - 03:56 PM

Evacuations & Notices 1

PUBLIC SAFETY NOTICE
Issued at 1/15/2026, 3:00 AM for Zone:

Emergency Road Closures 1

Industrial Rd
All Lanes - Both Directions (Starting: 1/15/2026, 3:00 AM)

Weather Watches & Warnings 0

No active weather watches or warnings are issued at this time.

Context and Approach

Industry Standard During Disasters

- FEMA, Cal OES, and many local agencies use similar tools when disasters strike

Our Approach: Build Systems That Work Every Day

- Routine use for emergency notices, road closures
- During disasters, we can scale up a system that responders and the public know how to use
- **Two good things at once:** Steady state value, and disaster preparedness

Development:

- Web-based with desktop and mobile views
- Built by OEM staff with ESRI Professional Services
- ESRI contract funded through federal grant award (State Homeland Security Grant Program)

Current Status & Early Success

This is NEW – Training and Familiarization Ongoing:

- Launched Training Program with SFPD Leadership, SFFD Support
- Multi-week practice scenario program to build familiarity
- Iterating based on feedback from 1st responders and community

Already Deployed:

- 3 Law Enforcement Incidents
- 1 Mass Care and Sheltering Operation

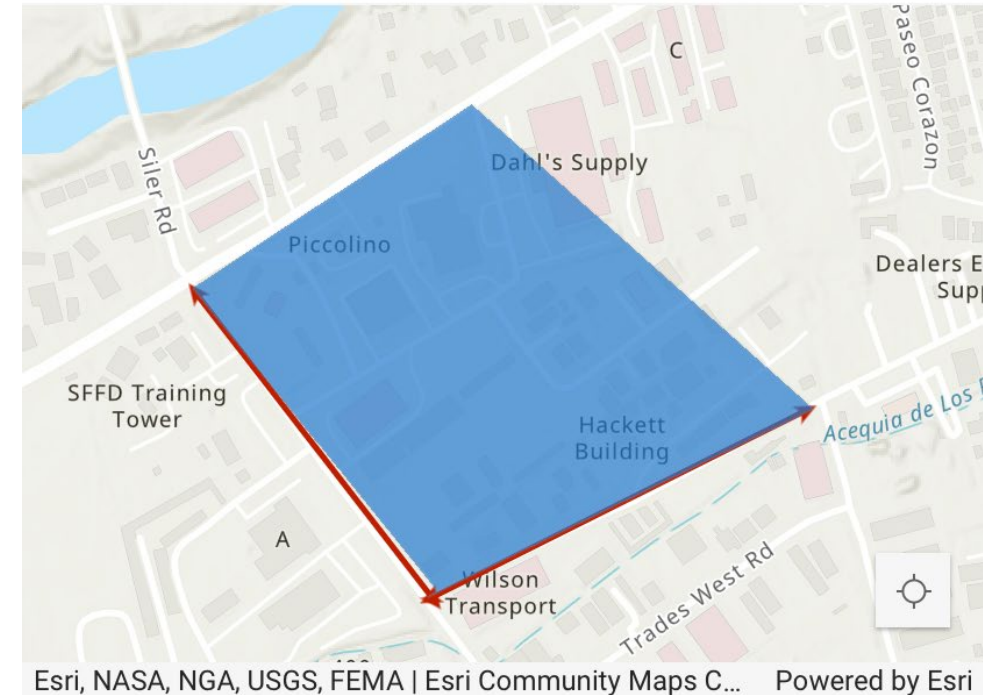
Huge Thank you to SFPD:

- Leadership willingness to learn and adopt new technology
- Partnership in developing SOPs and best practices

Issued: January 15, 2026 - 09:09 AM

▲ 1 Notices

🚫 2 Emergency Road Closures



Alert Information

▲ 1 Notices

PUBLIC SAFETY NOTICE

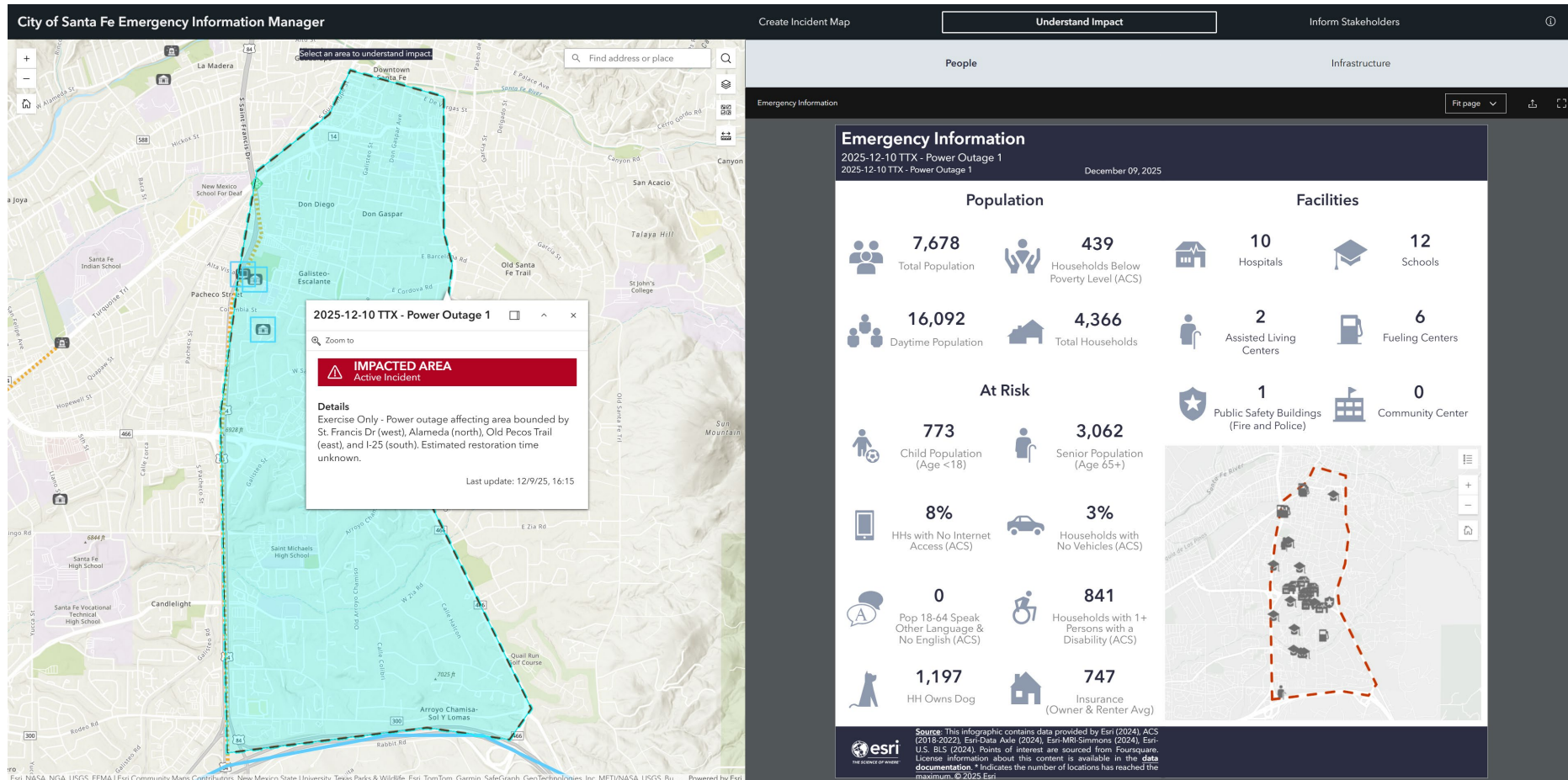
Issued at 1/15/2026, 3:00 AM for Zone:

Notices

Road Closures

Map legend

Emergency Operations I



Exercise graphic – NOT a real incident

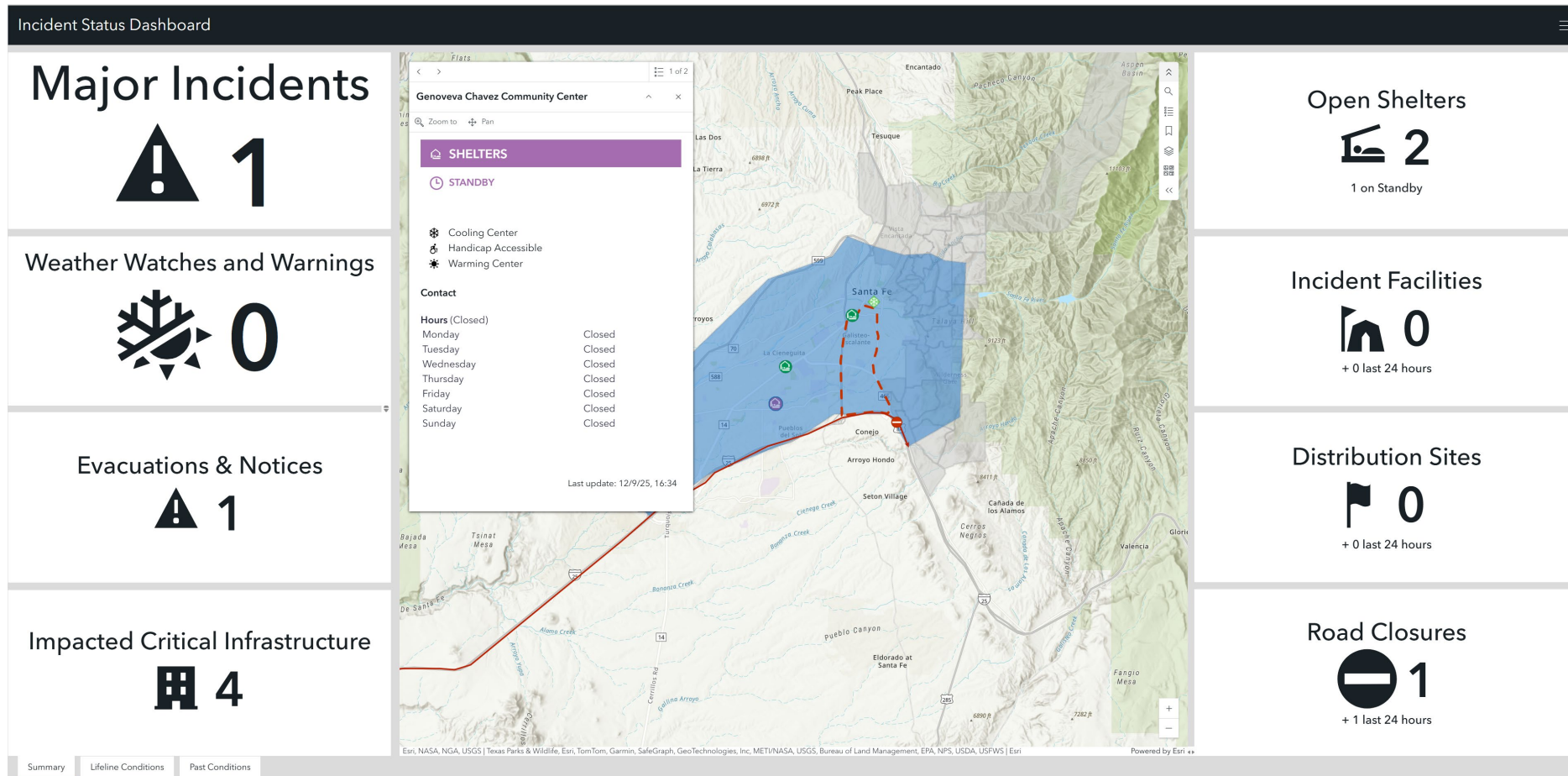
Emergency Operations II

The dashboard is titled "Issued: November 19, 2025 - 12:02 PM". It features three main panels:

- Evacuations & Notices:** A pink header with a red warning triangle icon and the number "1". Below it is a green "READY" button and text stating "Issued at 11/19/2025, 5:00 PM for Zone: 8A".
- Map:** A map of Santa Fe, NM, with a blue "EVACUATION ROUTE" button and a text box providing details: "Follow Gonzales > Alameda > Paseo de Peralta > Cerillos Southbound. Drive to a safe location and monitor official feeds for additional information. Do not stop in traffic and do not approach emergency vehicles." The last update is "11/19/25, 11:42 AM".
- Emergency Road Closures:** A grey panel with a black "no entry" sign icon and the number "0", with text stating "There are no emergency road closures at this time".
- Weather Watches & Warnings:** A grey panel with a weather icon (cloud with lightning and rain) and the number "1". It includes a "Winter Weather Advisory" issued on November 19 at 11:04 AM MST until November 21 at 5:00 AM MST by NWS Albuquerque NM.

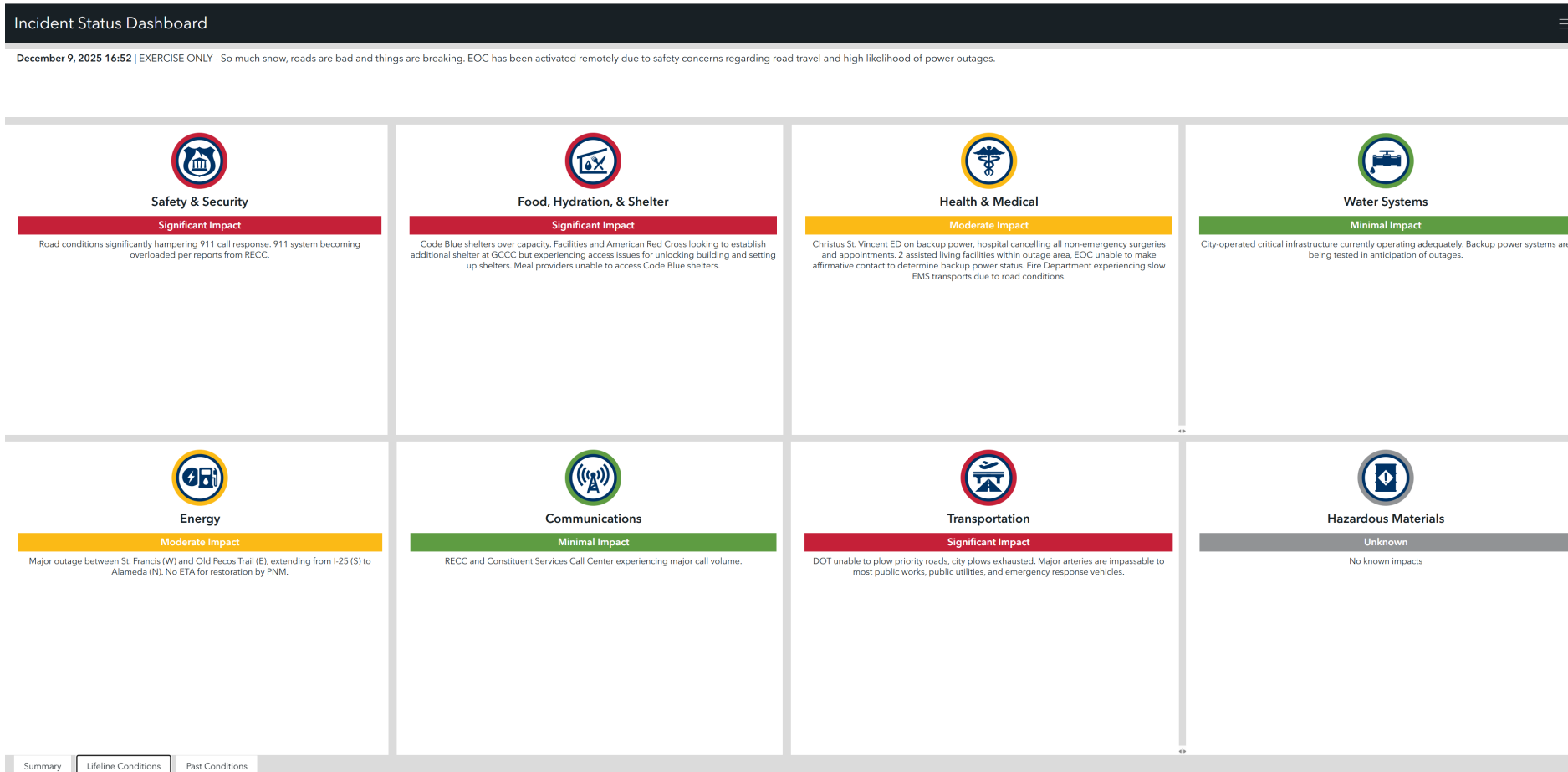
Exercise graphic – NOT a real incident

Emergency Operations III



Exercise graphic – NOT a real incident

Emergency Operations III



Exercise graphic – NOT a real incident

Public Alert & Warning Ecosystem

Ready Santa Fe Supports Improved Public Information and Warning, But It's Not Everything

- ✓ Register for Alert Santa Fe
- ✓ Enable Government Alerts
- ✓ Bookmark ready.santafenm.gov

Redundancy is Valuable: Communications across multiple platforms ensures consistent, official information

Leaning Forward

Anticipated Integrations

- Apple Maps and Google Maps (traffic/closure data)
- Third-party apps like Watch Duty (wildfire evacuations)

Why? People interact with spatial data in many ways. We want our information to be available where people already look.

Future Growth Areas

- Special events management (pre-planned closures)
- Utility notifications (water disruptions)