



## SANTA FE CONSERVATION TRUST

### Memo

To: City Public Works and Parks Staff, City Bicycle and Pedestrian Advisory Committee Members, & Henry Lynch Rd Design Team

From: Tim Rogers, Trails Program Manager, Santa Fe Conservation Trust (SFCT)

Re: SFCT proposal to build 180-ft. interim Acequia Trail on City Trail easement east of Henry Lynch Rd.

Date: Dec. 2, 2025

Dear City staff, BPAC members, and Henry Lynch Design Team:

I am very pleased to learn from the Chair of the BPAC Technical Review Subcommittee, Gary Schiffmiller, that current plans for Henry Lynch Rd. include allocating space for a ten-foot wide “sidepath” on the east side of Henry Lynch Rd., from Agua Fria St. south to the City’s existing easement for a future Acequia Trail (*see Figure 1 on p. 3*). As I communicated to the design team in June, I have advocated for this sidepath as a catalyst for trail connectivity in our community because it

- extends the County’s multi-million-dollar investment in an 180-foot bridge and 850-ft. connector trail, now built from the River Trail to Agua Fria St., to a more logical destination, with (a) more appropriate accommodations for bicyclists, pedestrians, and other trail users and (b) safe and comfortable access to many more popular locations (see Fig. 1).
- connects two of Santa Fe’s major urban trail alignments, the River and the Acequia, and
- in making this connection from Agua Fria St., crosses only two driveways and one dead-end street (Wofford Ln), a minimal level of cross-flow traffic that qualifies it as an excellent candidate for a two-way multi-use path along the road (“sidepath”) as opposed to a simple sidewalk for pedestrian use only.

My understanding is that the current plan is to build a six-foot-wide, concrete sidewalk and to rely on some future Acequia Trail project to widen this sidewalk into a ten-foot-wide sidepath suitable for two-way bicycle and pedestrian traffic.

**I am urging the City and its Design Team to include the full ten-foot wide sidepath in Henry Lynch Rd. reconstruction plans for the following reasons. The Santa Fe Conservation Trust is willing to support and, with the help of trail volunteers, build the key 180 feet of Acequia Trail connecting Henry Lynch Rd. to Parkway Dr. that might be needed to help justify this decision.**

1. It is unrealistic to expect a future City trail project to broaden its budget, geographic scope, and agency involvement beyond an existing City trail easement to include widening a 1,000-ft.-long sidewalk along a road that straddles both City and County jurisdictions. The Henry Lynch Rd. project now includes this complex area in its scope and can far more easily incorporate related expenses for mobilization, construction, and materials now, than might an unspecified future City trail project. In fact, under the current road project, if the sidepath is built with asphalt, its total cost may be comparable to that of a narrower, concrete sidewalk. (\*)
2. A projection that the Acequia Trail will not be built for at least ten years can only be predicated on the outlook for the next half mile or more of Acequia Trail, east to Siler Rd. The far more salient connection to justify investment in the County’s River Trail extension and this proposed

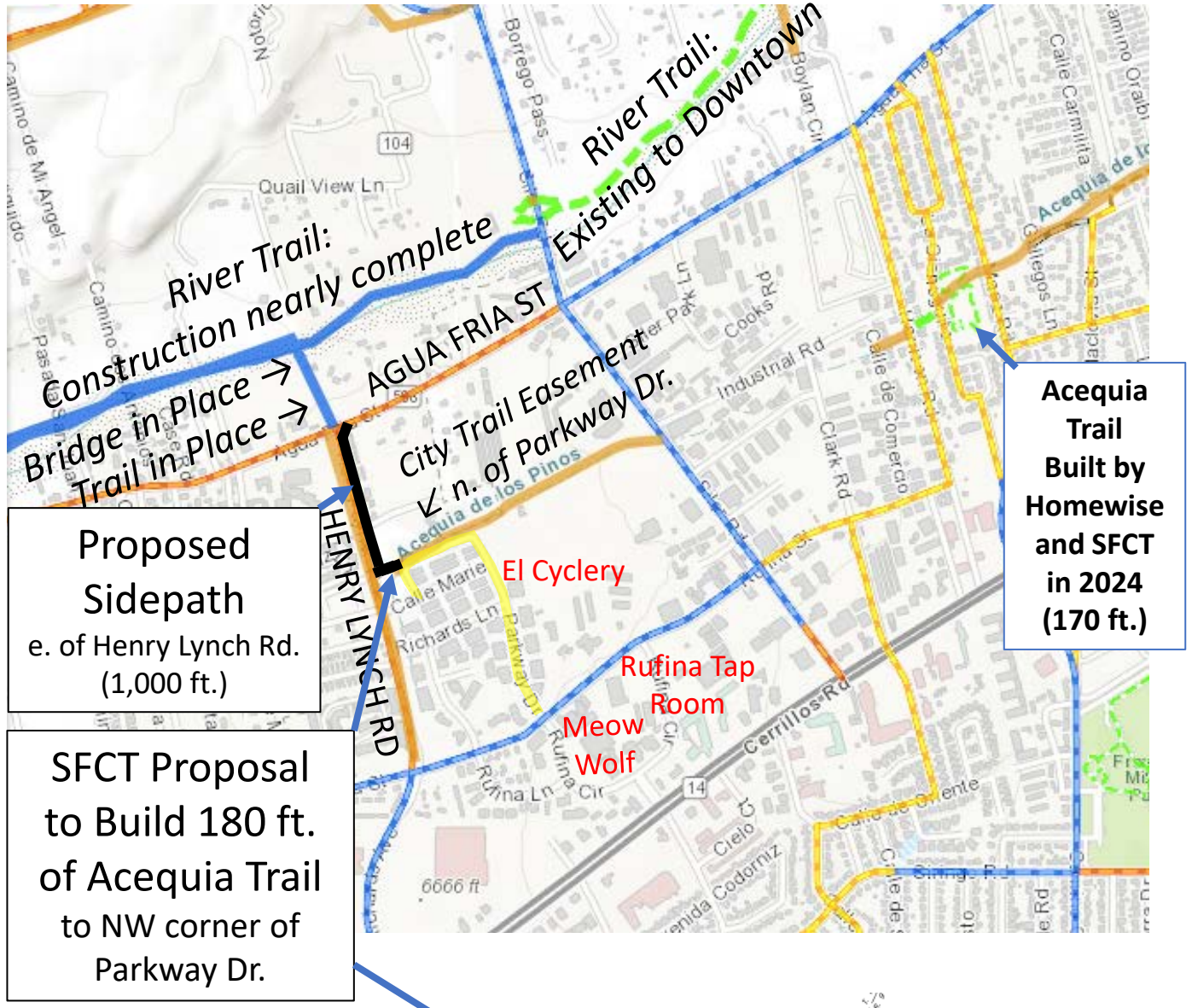
sidepath along Henry Lynch, is simply the **first 180 feet** of planned Acequia Trail from Henry Lynch Rd. to Parkway Dr., which would bring trail users to an extremely low-traffic and low-speed section of Parkway Dr. (in yellow on map) that is NOT a through route for cars – exactly like other safe and comfortable on-road extensions of the Acequia Trail elsewhere in Santa Fe.

3. This stretch of Parkway Dr. features more than 1/10 mile (540 ft.) of sidewalk on its north side, just south of the Acequia Trail easement, that is uninterrupted by driveway crossings and thus can act as a continuous, safe and comfortable extension of the proposed Acequia Trail for trail users who wish to continue off-road.
4. From this alignment, trail users can continue south along Parkway Dr., including sidewalks on both sides, to arrive at the following locations:
  - a. El Cyclery bike shop and Wild Leaven Bakery (among many other destinations in Richards Ave Business Park) – 1/10 mile
  - b. Bike Lanes and sidewalks on Rufina St. and Rufina Ct. – ¼ mile
  - c. Meow Wolf – 1/3 mile
  - d. Rufina Tap Room – 1/3 mile
  - e. Tortilla Flats and many other businesses on Cerrillos Rd. – less than ½ mile
  - f. Acequia Trail at Harrison Rd. – 1.1 mile
  - g. Santa Fe Railyard via Rufina St. and Acequia Trail to east – 3.75 miles
5. I am pleased to learn that the Design Team is already proposing excellent bike lanes and sidewalks along Henry Lynch Rd., which will be a vast improvement over the current status and will do an excellent job conveying bicyclists and pedestrians along Henry Lynch Rd. to Richards Ave. and beyond. This sidepath proposal is not redundant with, but rather is intended to complement these facilities by widening part of one sidewalk to provide a superior alternative for two-way trail traffic, including pedestrians, bicyclists, dogs, baby carriages, scooters, and countless other forms of “micro-mobility” that are emerging on our trail system.
6. In 2024, in collaboration with Homewise and City Parks, SFCT built roughly 120 feet of “interim Acequia Trail” in Hermanos Rodriguez Park out of packed crusher fines, a public trail segment used by countless local pedestrians as well as bicyclists who now enjoy unprecedented connectivity between the Acequia Trail to the east and Rufina St. to the west – without using Cerrillos Rd. or Agua Fria St.
7. SFCT has worked to improve trails and trail connectivity throughout the Santa Fe area since its inception in 1993, and continues to pursue new trail connections in our community as illustrated through our “GUSTO” effort, in which the City and County are collaborating members by official resolution. In collaboration with the City, SFCT can wholeheartedly pledge to use its grant writing, fundraising, staff, board, and volunteer capability to complete a 180-foot trail on the City’s Acequia Trail easement from Parkway Dr. to Henry Lynch Rd. (see Figure 2) to guarantee that the proposed Henry Lynch Rd. sidepath and its users, including those coming from the River Trail, can safely and comfortably reach their desired destinations.

Thank you for your efforts and for considering this proposal!

*(\*) – Since 30 ft. width of asphalt already exists along the east edge of the public right of way in the form of the current Henry Lynch Rd., the simple preservation of the easternmost ten feet width of this asphalt could serve to create the proposed side path at enormous cost savings compared to the demolition and disposal of this part of the roadway, and the construction of a new ten-foot-wide asphalt facility in its place.*

Figure 1: SFCT's Vision of Trail Connectivity in Henry Lynch Rd. area (as viewed on MPO Website)

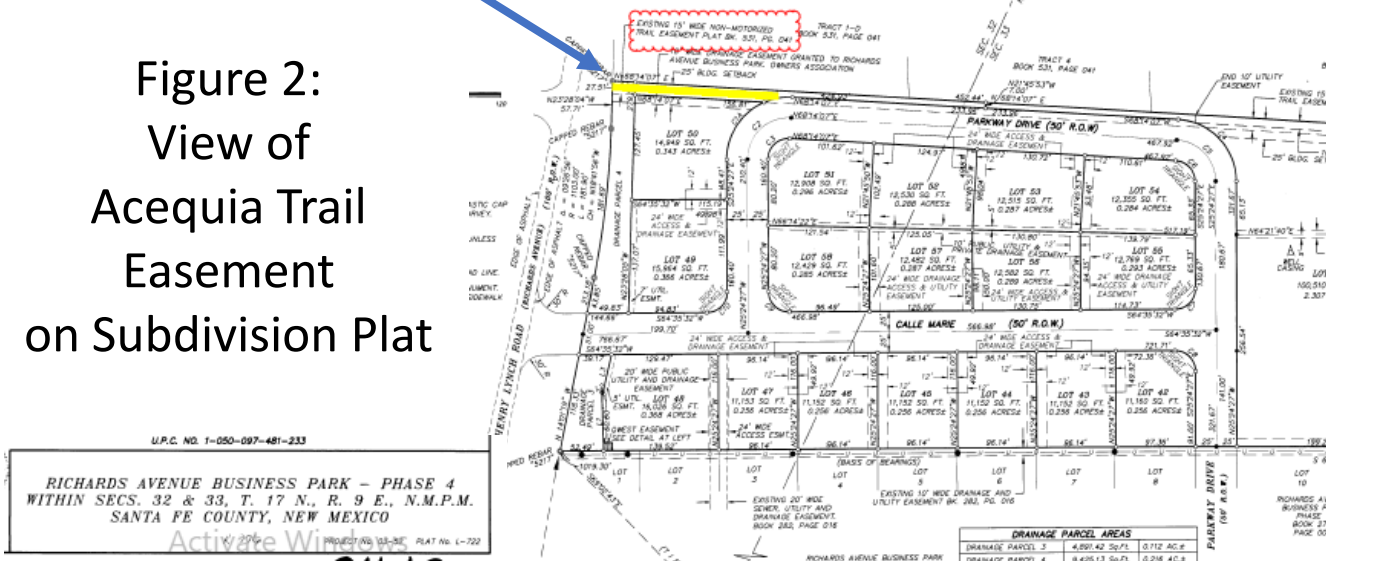


**Proposed Sidepath**  
e. of Henry Lynch Rd.  
(1,000 ft.)

**SFCT Proposal to Build 180 ft. of Acequia Trail to NW corner of Parkway Dr.**

**Acequia Trail Built by Homewise and SFCT in 2024 (170 ft.)**

Figure 2: View of Acequia Trail Easement on Subdivision Plat



U.P.C. NO. 1-050-097-481-233  
**RICHARDS AVENUE BUSINESS PARK - PHASE 4**  
 WITHIN SECS. 32 & 33, T. 17 N., R. 9 E., N.M.P.M.  
 SANTA FE COUNTY, NEW MEXICO  
 ActiveWise