



Santa Fe Forward

Status Briefing and Previews

Governing Body Meeting

Wednesday, January 28, 2026

Jan
2026

Overview

1. Background
2. Status
3. Findings
4. Previews
5. What's next?

Santa Fe
Forward





*If everything is
a priority, then
nothing is.*

Approach to Santa Fe Forward:

Direction to Plan

- Statutory Authority NMSA §3-19-9
- Governing Body Resolution No. 2023-15

A Plan of Action

- Guide capital and operating annual budgets
- Department work plans aligned to deliver initiatives

Usable Daily

- Concise, integrated and prioritized
- Clear language and graphical layout

Policy versus Regulatory

- General Plan is policy-focused, advisory and less detailed because its purpose is broad
- Land Development Code is regulatory, mandatory and therefore detailed because its purpose is specific

Status:

Completed Tasks

- ✓ Technical commencement September 2024; engagement began January 2025
- ✓ Assessment Report
- ✓ Community Partners Program & Technical Working Group (TWG) mobilized
- ✓ Stage Gate 1: Planning Commission, TWG, Community Partners & Governing Body
- ✓ Stage Gates 2 & 3: Planning Commission & TWG



Status:

Progressing Tasks

- ✓ Mission, Vision, Strategies + plan outline: **85% complete**
- ✓ Scenario Frameworks toward Plan Map: **65% complete**
- ✓ The City Smart digital user platform: **80% complete**



Status:

Forthcoming Tasks

- ✓ Preferred plan map
- ✓ Plan document
- ✓ Implementation action plan
- ✓ The City Smart additional modules and datasets



Public Involvement and Communications

- Community Partners
- Technical Working Group and Interested Party Briefings
- Open Houses & Tabling Events
- Visual Communications, Website, and Social Media
- Alignment & Collaboration with LDC
- Completely Bilingual Program



Public Engagement to date:

- ✓ 9,500+ unique website visitors
- ✓ 788 completed surveys
- ✓ 45+ hours at more than 15 events resulting in more than 450+ interactions
- ✓ 8,000+ pieces of input received
- ✓ **January 2026** social media: 16,180+ views leading to 117+ interactions



Findings - Engagement



Key Terms

- Affordable
- Inclusive
- Accessible
- Differentiated
- Creative

Broad Themes

- General alignment across public, stakeholders, and contributors
- Spread inclusive opportunities throughout Santa Fe
- Increase variety and affordability of housing
- Retain character while embracing change, culture & arts
- Broaden and strengthen civic engagement

Findings - Technical



Key Terms

- Resilience
- Places
- Connections
- Stewardship
- Modernize

Broad Themes

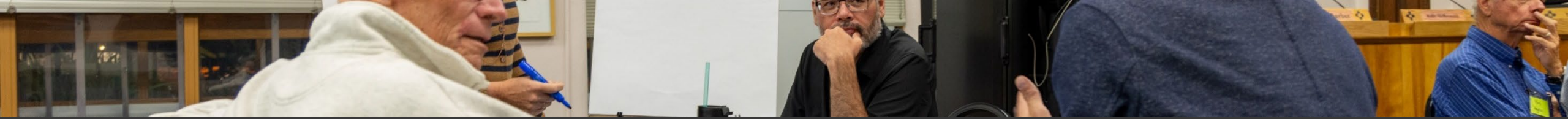
- Resiliency to climate and socio-economic changes
- Safe and effective mobility choices
- Create conditions to facilitate economic diversification
- Modernize and regionally collaborate on delivering services
- Identify areas for investment, done in concert with exceptional design



Findings - Notables



- Population growth is forecast to continue, leveling off in 2040s before potentially declining
- Substantial vacant and underutilized land capacity exists within current incorporated area to meet growth forecast
- Displacement risk is highest in the central acequia neighborhoods near Agua Fria
- Water supply is adequate but maintaining all types of infrastructure and assets in a state of good repair and availability requires funding
- Housing, employment and mobility opportunities need to diversify, supported by education, health and engagement—all interconnected



Preview: Mission, Vision, and Strategies

DRAFT



Mission Statement

Faithful to our heritage, focused on our present and forging our future, Santa Fe Forward shapes *the City Different*, sets priorities and opens opportunities for all.



Vision Statement

Santa Fe supports and respects the needs and growth of all in harmony with our heritage and environment, thriving today and tomorrow as *the City Different*.



Preview: Mission, Vision, and Strategies

DRAFT



Strategies

People & Housing

History, Culture & Arts

Engagement & Governance

Education, Social & Economic Opportunity

Nature, Sustainability & Resiliency

Community Services & Essential Utilities

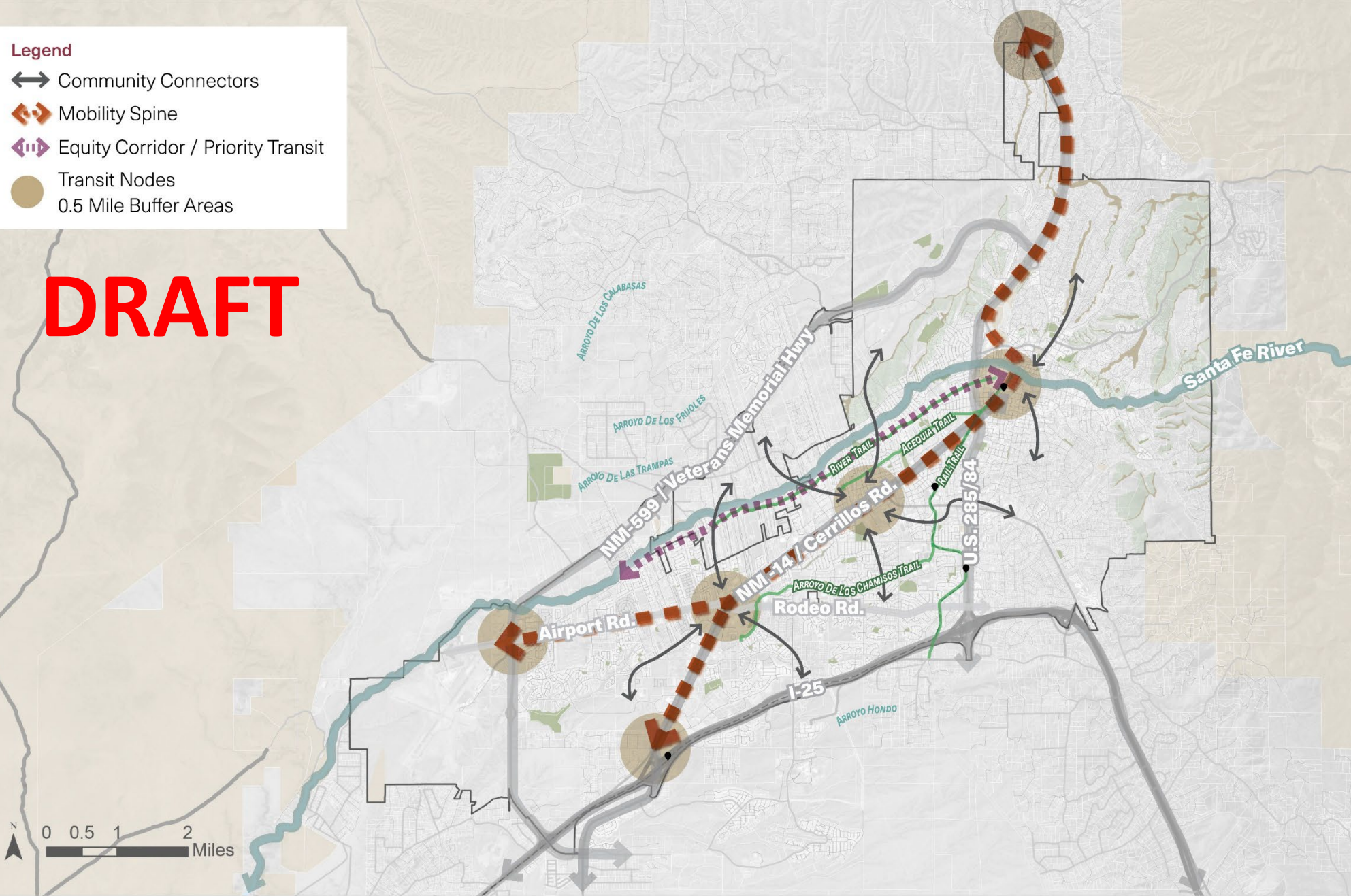
Transportation & Access to Opportunity

The Built City

Legend

- ↔ Community Connectors
- 🔗 Mobility Spine
- 🚶 Equity Corridor / Priority Transit
- Transit Nodes
- 0.5 Mile Buffer Areas

DRAFT



Connects people, places and productivity, broadly increasing access to opportunities, providing more choices that are safe and reliable.

A crosstown and regional mobility spine connected to the community by shared mobility corridors.

- Robust transit to advance equity and provide for an attractive mobility choice—local and regional.
- Community connectors that are designed to put moving people first and serve as destinations for nearby neighborhoods.
- A unified approach that strengthens the City's ability to accommodate and deliver coordinated and transformative transportation, land use and urban design projects.

Legend

→ Community Connectors

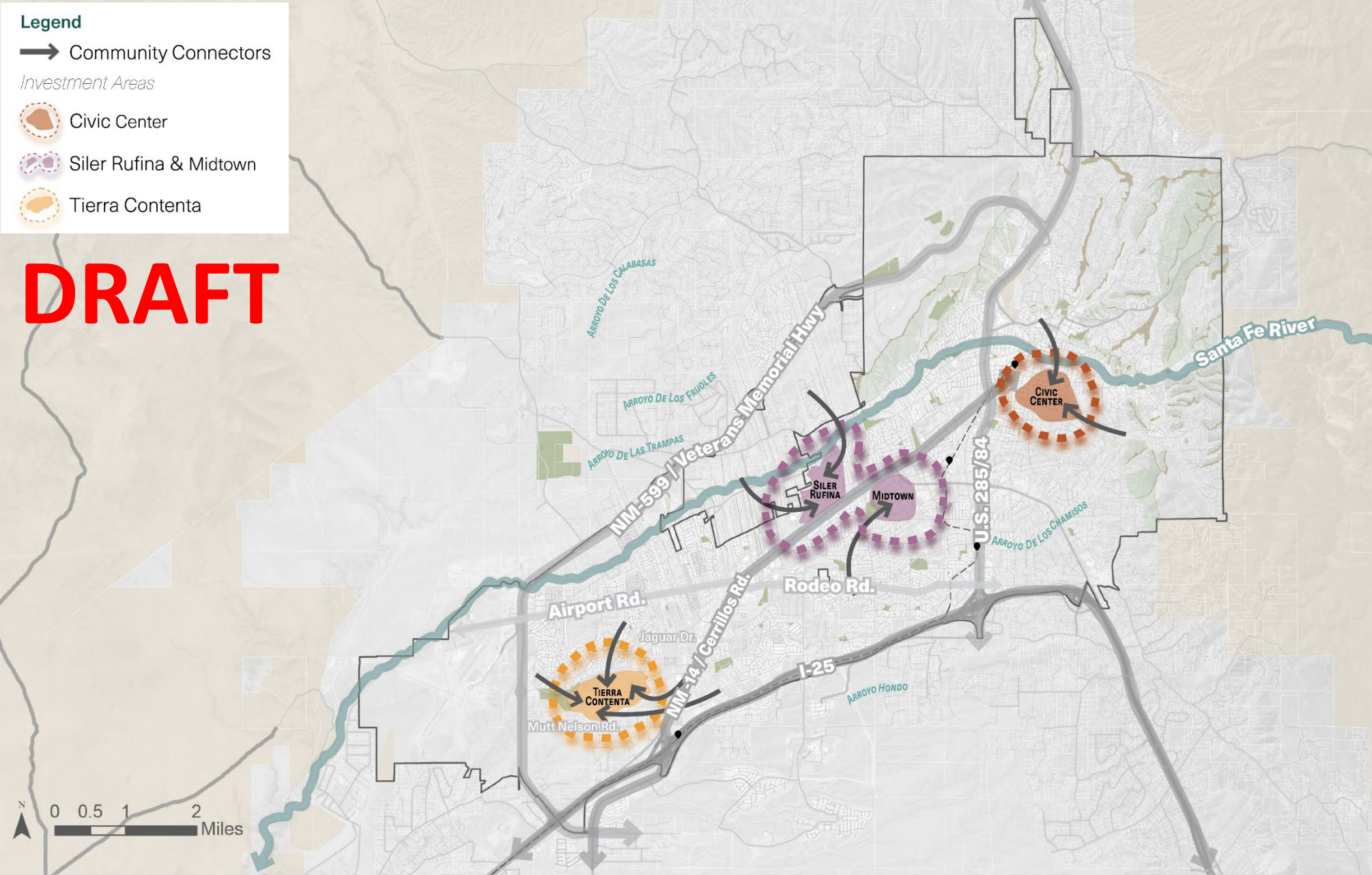
Investment Areas

Civic Center

Siler Rufina & Midtown

Tierra Contenta

DRAFT



Strengthens and creates substantial, thematic places that enhance community life, reinforce local character and attract people, services and investment.

Three strong places to give all Santa Feans access to amenities and services aligned with key nearby characteristics and needs.

- Distinct, walkable places that are both organic and planned to add variety to Santa Fe, attracting people and investment.
- A constellation of nearby existing and future smaller, focused walkable districts connected to each of the major three places.
- Guides urban design and placemaking, in coordination with mobility infrastructure and services.

Legend

Preservation Areas

- Parajes
- Escarpments

Investment Areas

- Residential Masterplan
- Education & Incubator
- Civic Center
- Retail & Entertainment
- Logistics & Industry
- Midtown
- Wellness Village

DRAFT



Builds Santa Fe's ability to adapt to a changing climate and thrive through economic diversification, expanded housing choices, and protection of its unique natural setting.

Bold moves with high impact to address gaps in meeting vital needs, building socioeconomic and climatic resilience.

- Clean industrial, logistics, and innovation districts to strengthen economic diversity.
- New housing areas that expand options while maintaining Santa Fe's landscape and character.
- Preserved natural landscapes and traditional land patterns, including regional Paraje neighborhoods.

- **Neighborhoods**

- Legacy Neighborhood
- Contemporary Neighborhood
- Everyday Neighborhood

- **Corridors**

- Commerce Corridor
- Community Corridor

- **Districts**

- Heritage and Tourism District
- Arts and Culture District
- Family and Wellness District

- **Engines**

- Makers and Services Engine
- Production and Logistics Engine

- **Landscapes**

- Living Link Landscape
- Conservation Vista Landscape

DRAFT

Preview:
Prioritization
Framework



Established Areas
(shown: Historic Eastside)



Enhancement Areas
(shown: Tierra Contenta)



Investment Areas
(shown: airport vicinity)

What's Next?

- Calibrating project pace to City's leadership transition period to ensure alignment
- Prepare approach and timing for next steps afterward
- Continue engaging internally and externally





Thank you!

Your ideas and feedback ensures Santa Fe Forward captures the diverse perspectives, aspirations, and evolving needs of our city.

Visit: SantaFeForward.org

Email: info@SantaFeForward.org