



Headwaters of Blanco Basin (foreground) and Navajo Basin (background)



City of Santa Fe Seasonal Water Planning: 2026 Preliminary Update

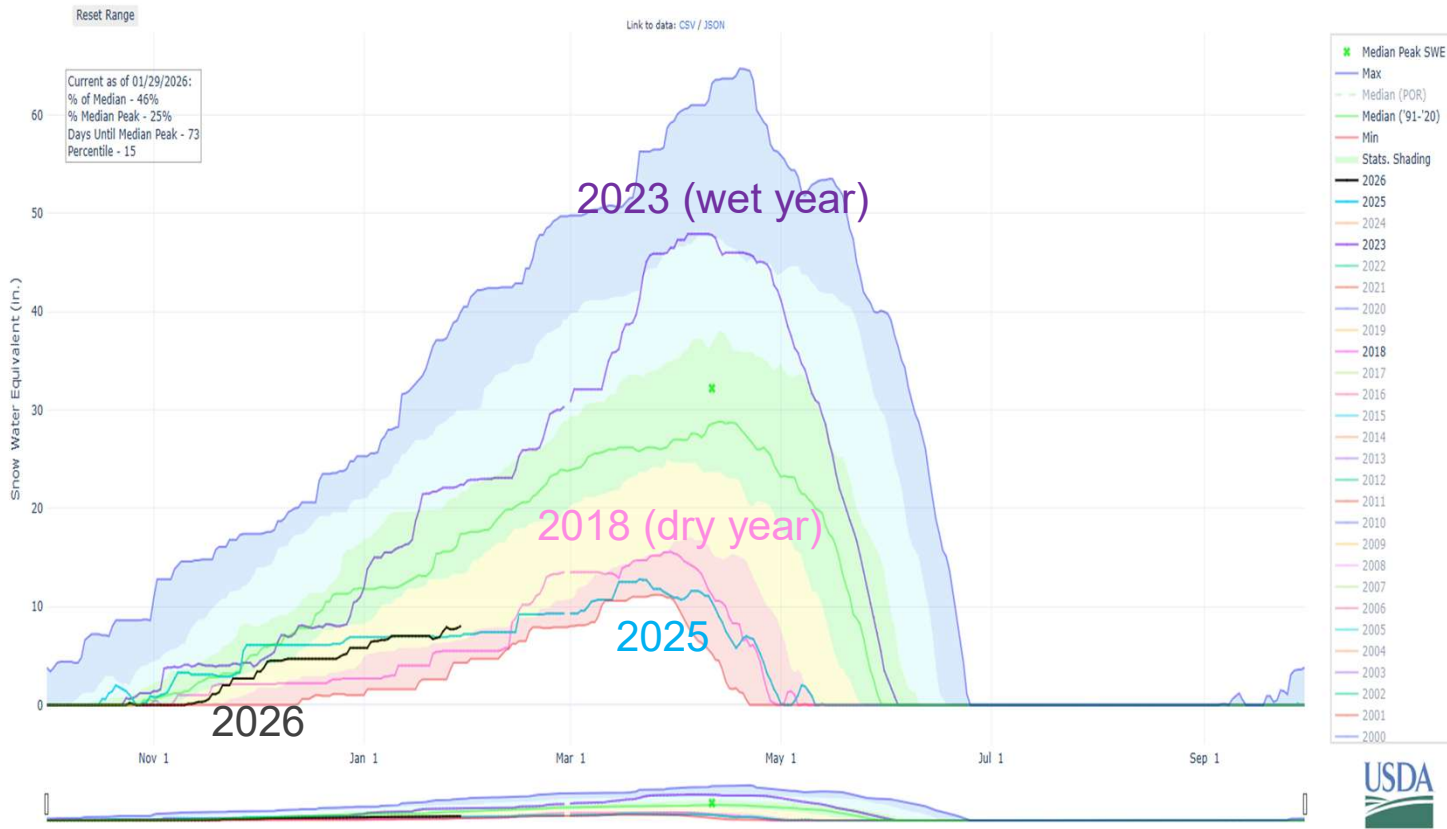
BDD Board Meeting
February 5, 2026

Introduction and Key Points

- This presentation summarizes current conditions and our preliminary annual planning
- At this time of year, there is great uncertainty around snowmelt runoff
- Snowmelt runoff forecasts improve through spring; we disseminate our plan to the public in April
- Even with low snowpack and runoff, we will have enough water for BDD and the partners this year



Snow in San Juans (Snotel)



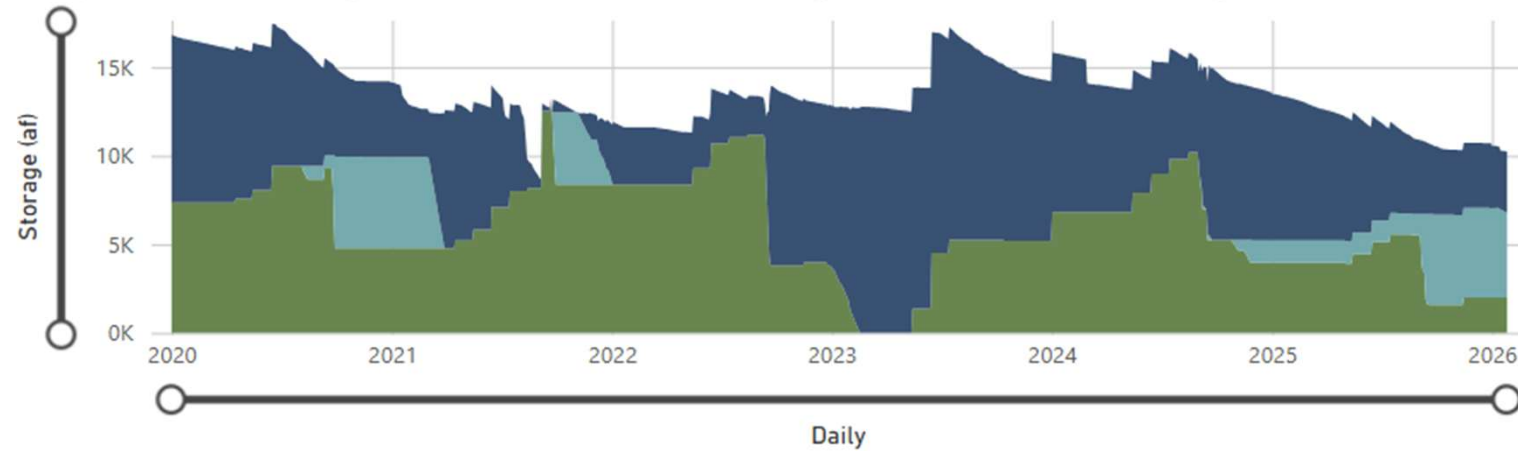
The 2026 snow season in the San Juans is shaping up to be similar to last year and 2018, which were both dry



SJC Reservoir Storage

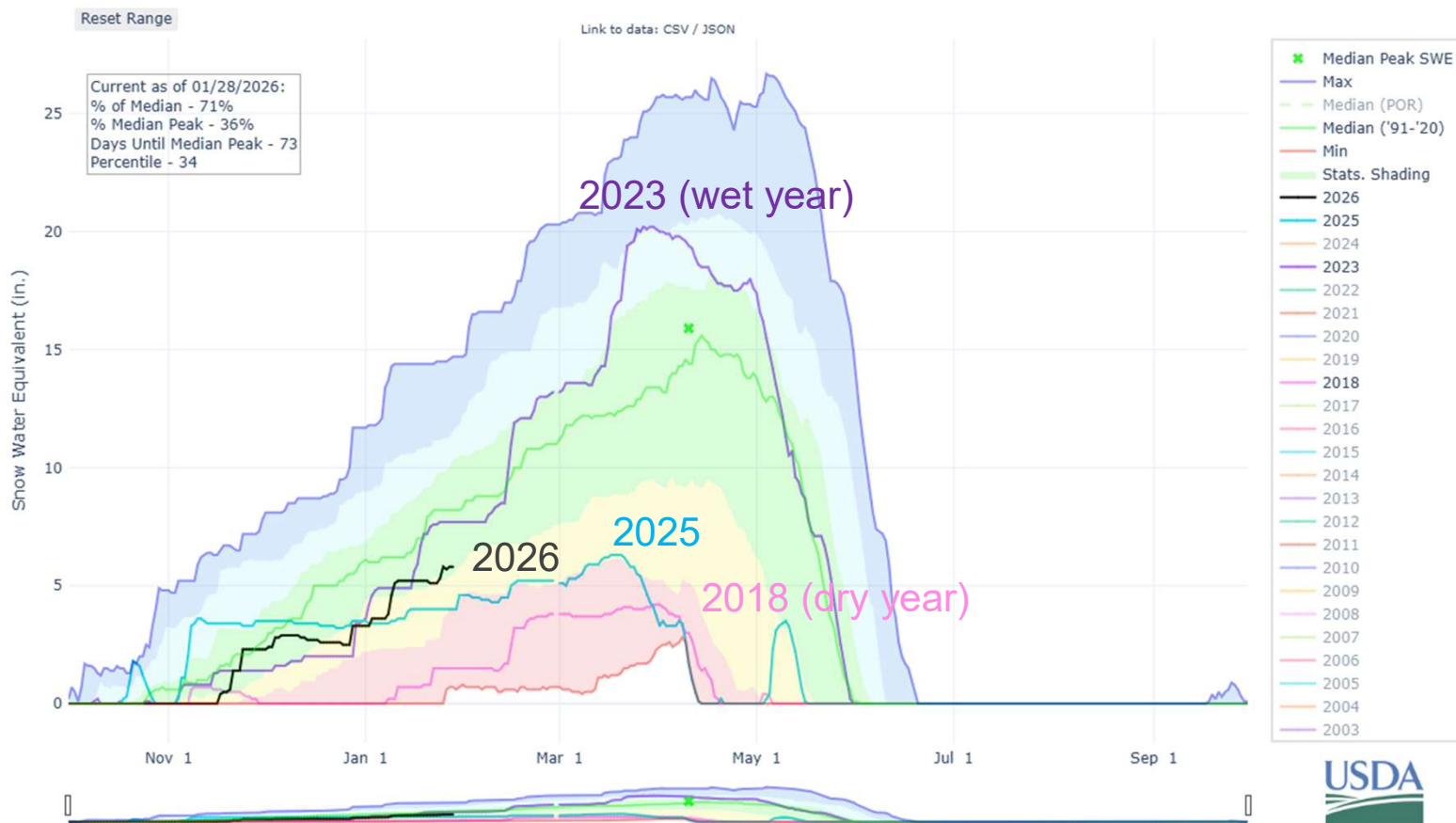
SJC Storage (af)

● Abiquiu Lake Santa Fe Storage (af) ● El Vado Reservoir Santa Fe Storage (af) ● Heron Lake Santa Fe Storage (af)



Currently the City has about 10,000 AF of SJC water in storage

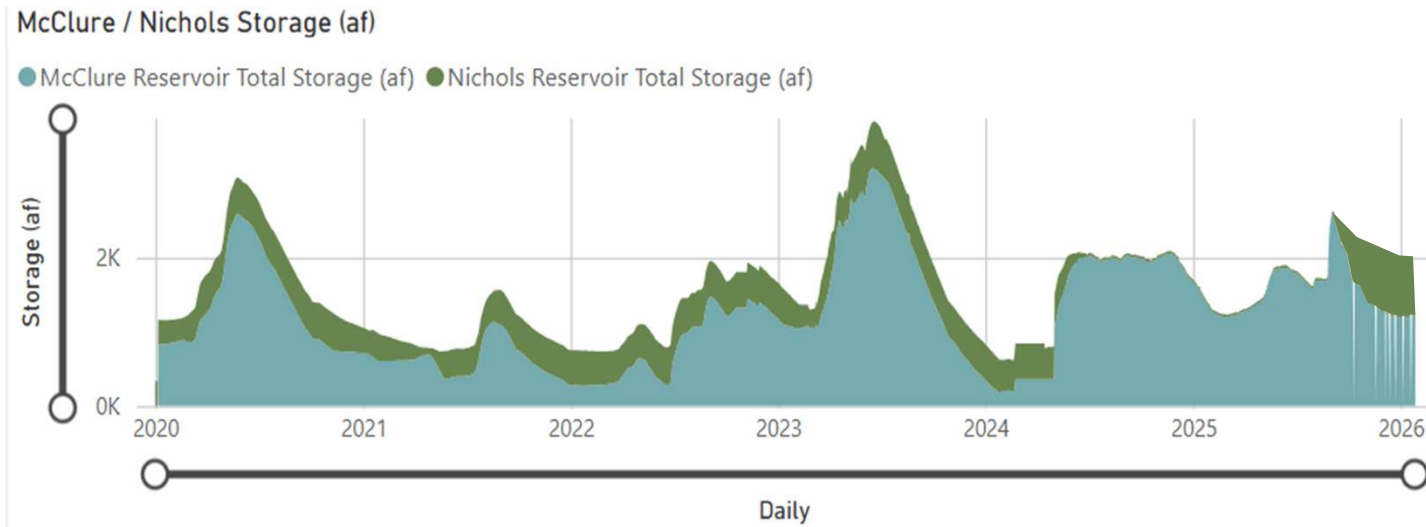
Snow in Watershed (Santa Fe Snotel)



In the Santa Fe watershed, 2026 is off to a better start than 2025, but still below the median



Santa Fe River Reservoir Storage



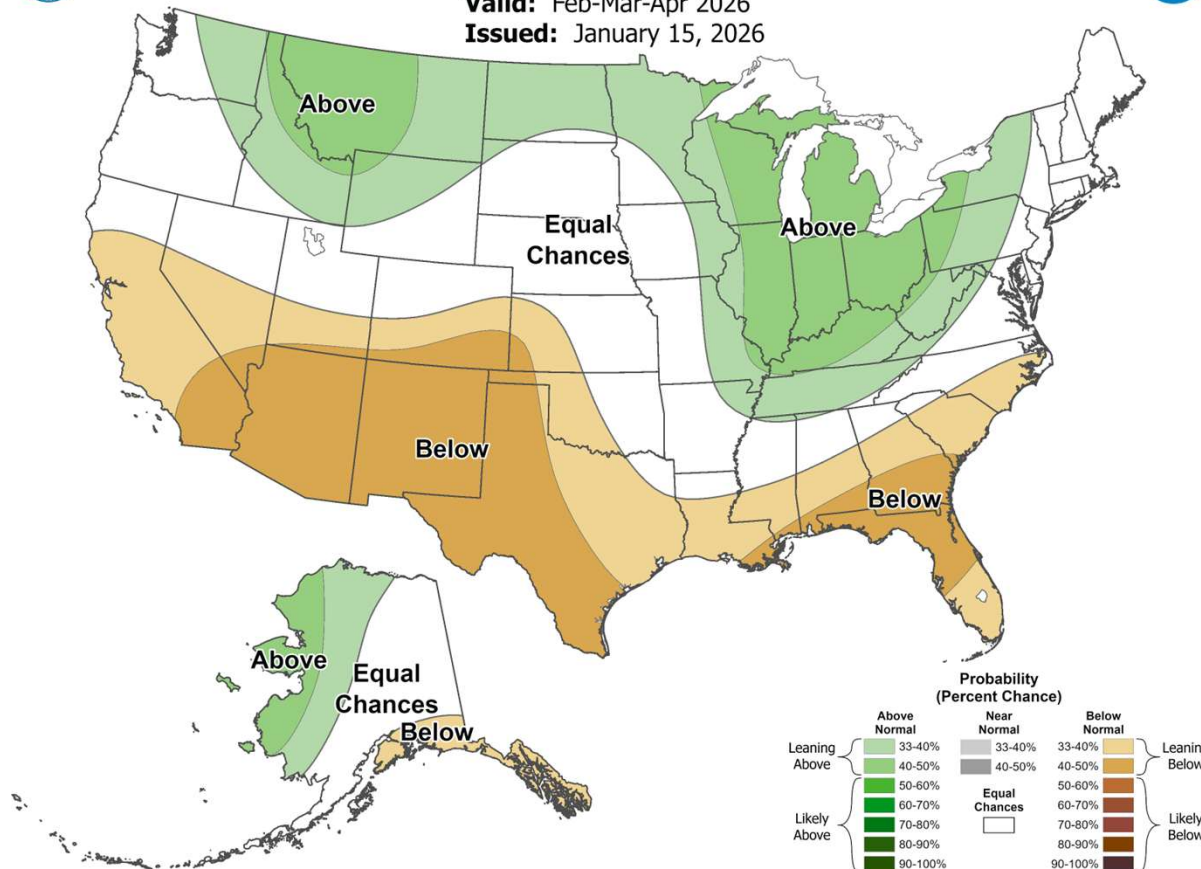
Currently there is around 2,000 AF of storage in the Santa Fe Watershed, more than we typically start the year with.

Seasonal Forecast

Seasonal Precipitation Outlook



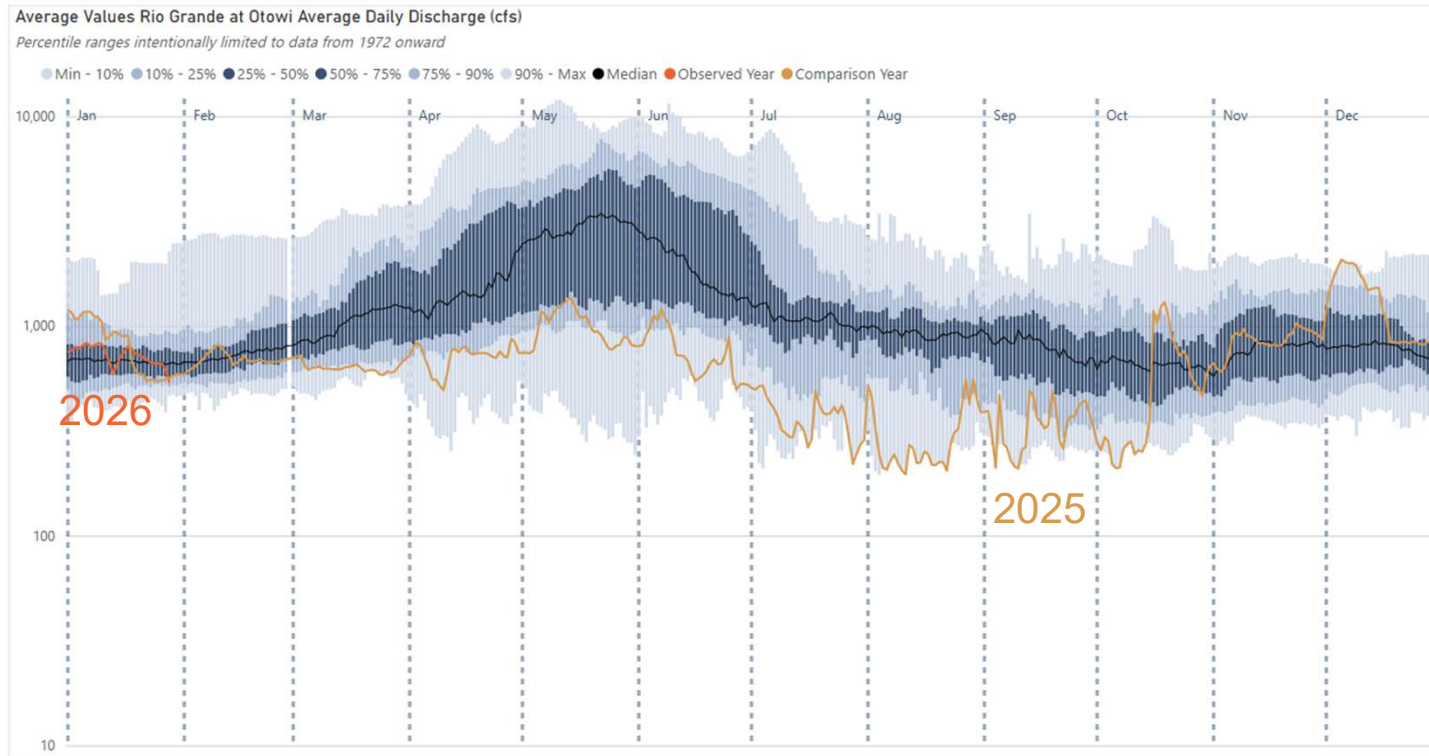
Valid: Feb-Mar-Apr 2026
Issued: January 15, 2026



The 3-month outlook issued by the Climate Prediction Center has much of the southwest on track to continue to see below average precipitation



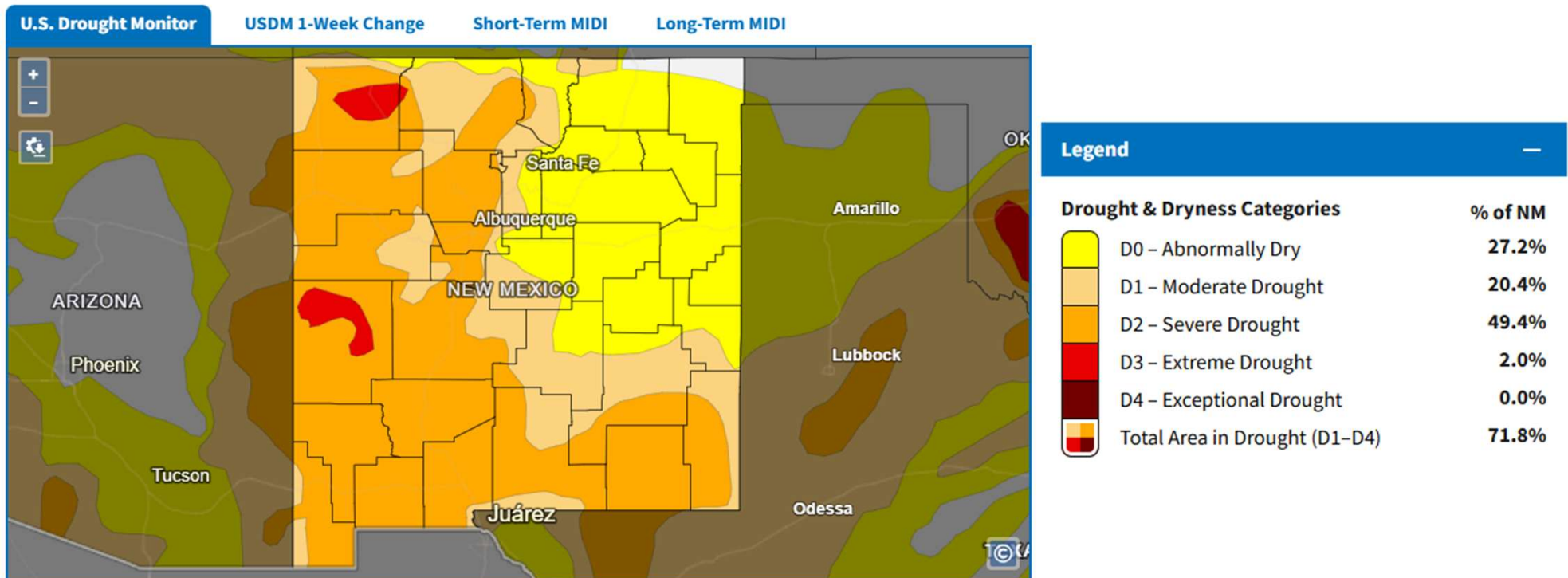
Rio Grande Flows



2025 saw many new low flow records on the Rio Grande at Otowi, mostly in the summer months.

Drought Monitor

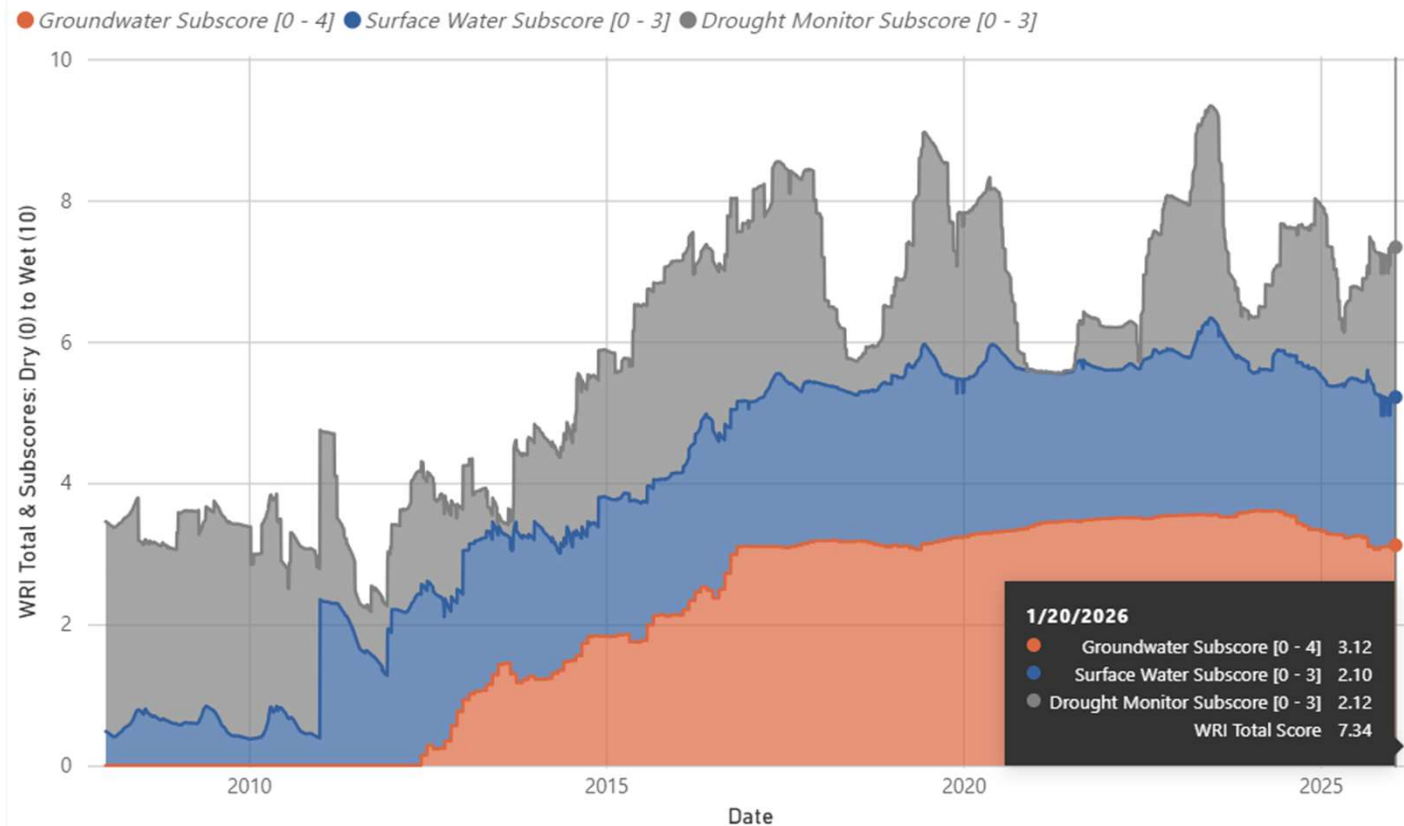
Santa Fe County is entirely D0 or D1



Water Resources Indicator

Current score = 7.3

WRI Daily Total Score as Sum of Weighted Subscores (Stacked)



WRI is our tool to evaluate seasonal outlook. It shows:

1. Drought score is still favorable
2. We have enough surface water in storage
3. Groundwater is available as needed

Preliminary Source Water Planning

Monthly Average Water Operations Projections (MGD)								
Month	City + County Demand		Canyon Road		BDD		Groundwater	
	WR	Actual	WR	Actual	WR	Actual	WR	Actual
Jan-25	6.7		1.1		5.1		0.5	
Feb-25	6.9		2		4.4		0.5	
Mar-25	7.4		3		3.9		0.5	
Apr-25	9.0		3		5.5		0.5	
May-25	10.4		4		5.9		0.5	
Jun-25	12.3		4		7.8		0.5	
Jul-25	11.9		4		5.0		2.9	
Aug-25	12.5		4		4.0		4.5	
Sep-25	11.0		4		5.0		2	
Oct-25	9.5		4		5.0		0.5	
Nov-25	6.9		3		3.4		0.5	
Dec-25	7.1		3		3.6		0.5	
Total (MG)	3393		1192.1		1775		425.9	0
Total (AF)	10383		3648		5432		1303	0

In our preliminary look, in 2026 we plan on:

1. Using mostly surface water to meet City and County demands
2. Producing over 5,000 AFY from BDD, a similar amount to past years
3. Challenges with low summer flows on the Rio Grande, limiting diversion of native rights (using SJC instead) and dealing with monsoon-driven turbidity events



Water Resources Annual Planning Process

- Early period (January to March): preliminary planning
 - In weekly operations meetings, use preliminary runoff forecasts to develop a skeleton plan (previous slide)
 - Revise as conditions warrant
- April: draft final planning
 - Develop draft final plan
 - Use USBR annual operating plan for SJC allocations and Rio Grande flows
 - Use NRCS April 1 runoff forecast for Santa Fe Watershed, paired with snowmelt runoff tool
 - April public dissemination of status, to governing body and public (“What’s Up with Water”)
- Spring/Summer/Fall: continuous planning
 - Weekly federal agencies river operations calls for coordination and keeping up to date on conditions
 - Monitor Rio Grande flows and manage water rights diversions accordingly
- Ongoing work to improve forecasts
 - Santa Fe River: Snowmelt runoff tool + new field snow surveying program
 - SJC Tributary LIDAR study



Water Resources Long-Term Planning Process: Santa Fe 2100



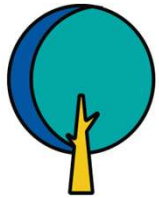
Reliability

Do we have enough water to meet increasing demand?



Sustainability

Surface water use (more renewable) vs groundwater use?



Green Space

How green is the City (water used for green space)?



River Flows (“Blue”)

How much water is there in the Santa Fe River?

Questions?