

STATE OF NEW MEXICO

# Executive Office Building

Historic Districts Review Board Re-Submission (Updated Renderings)



luis vidal + architects



JENKINSGAVIN  
LAND USE | PROJECT MANAGEMENT

January 27 2026

Reduced glazing:  
Separated into two  
windows

Pediment added to  
all windows

Single stucco color

Window size  
reduced

Roof on Portal

Solid panels at  
ground windows





Reduced glazing:  
Separated into two  
windows



Single stucco color



Window size  
reduced



Pediment added to  
all windows



Cupola proportions  
& detail

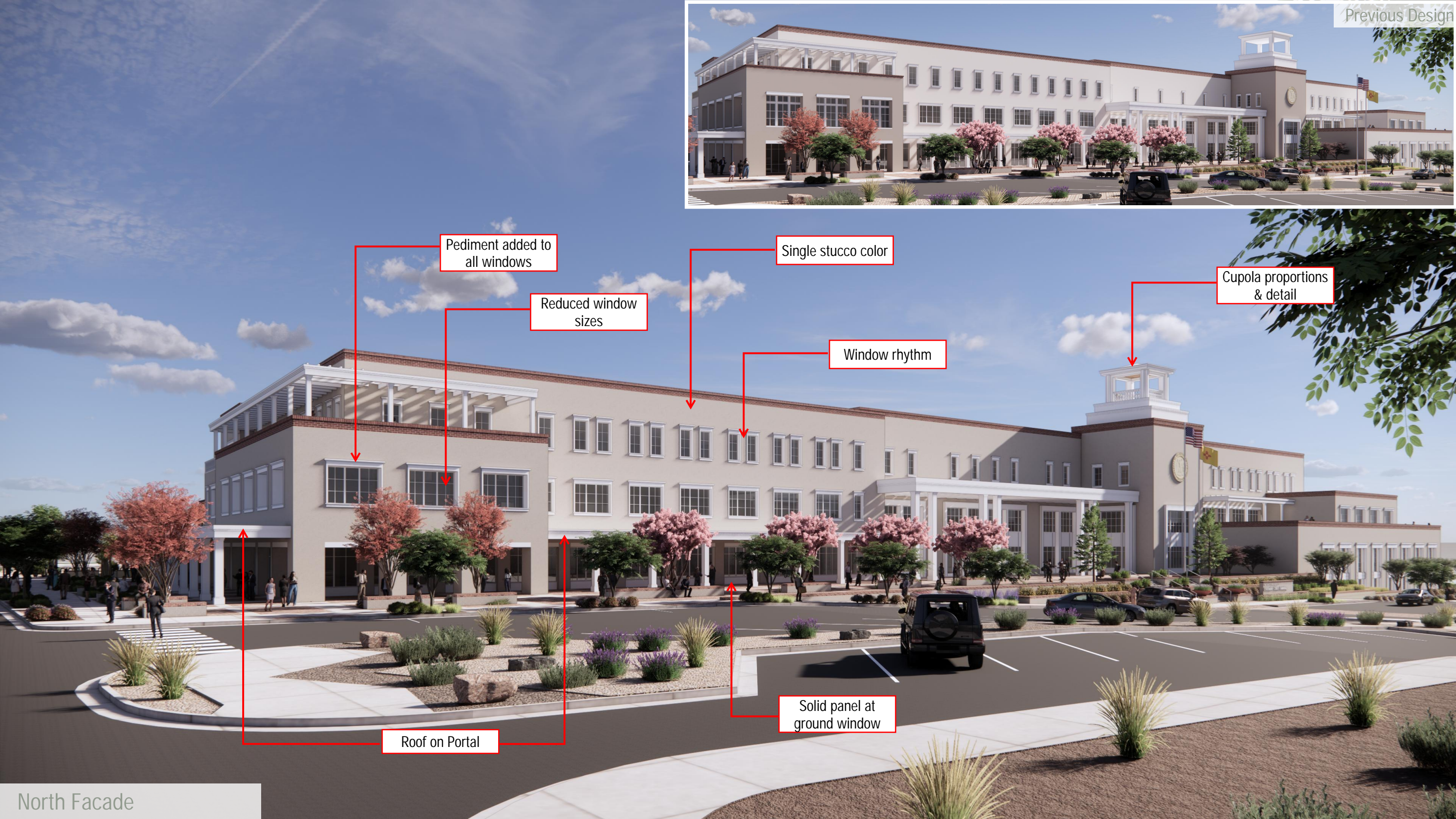


Roof on Portal



Solid panel at  
ground window





Pediment added to all windows

Reduced window sizes

Single stucco color

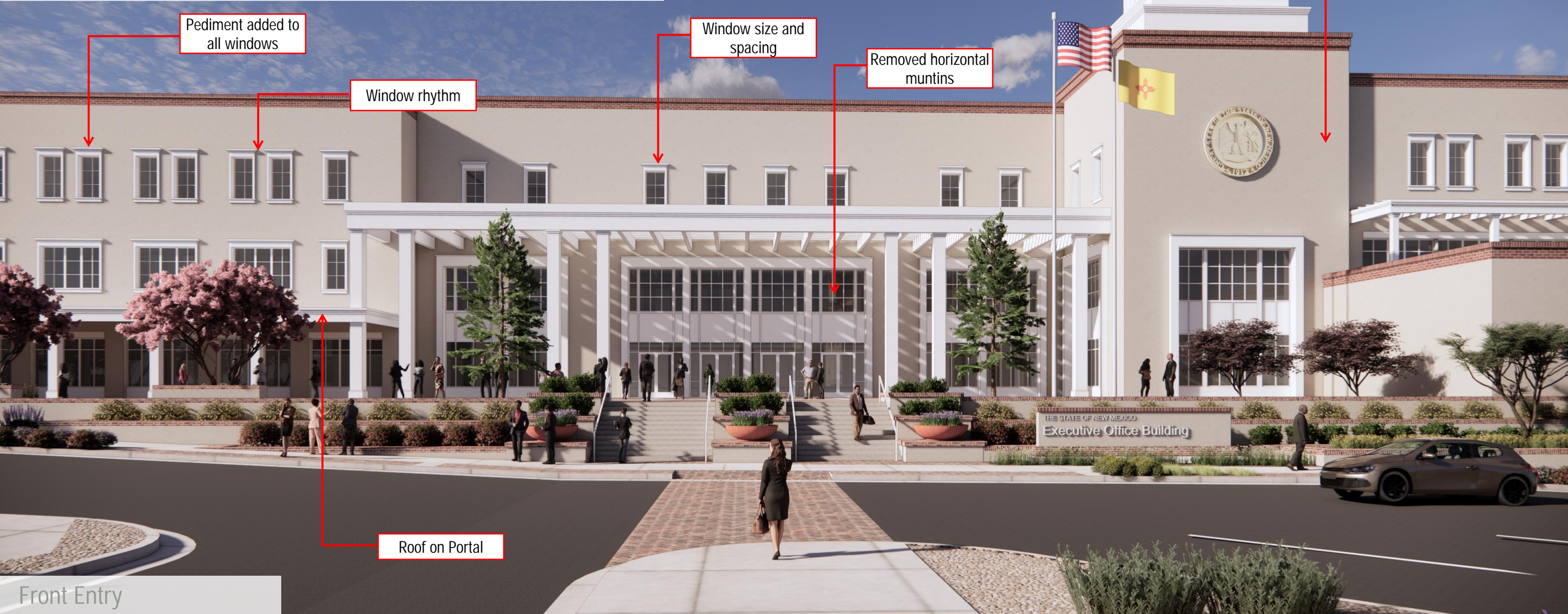
Window rhythm

Cupola proportions & detail

Roof on Portal

Solid panel at ground window

Previous Design



Pediment added to all windows

Window rhythm

Window size and spacing

Removed horizontal muntins

Roof on Portal

Cupola proportions & detail

Single stucco color

Front Entry

Previous Design



Cupola proportions & detail

Pediment added to all windows

Window rhythm

Northwest



East Plaza



Northeast Corner



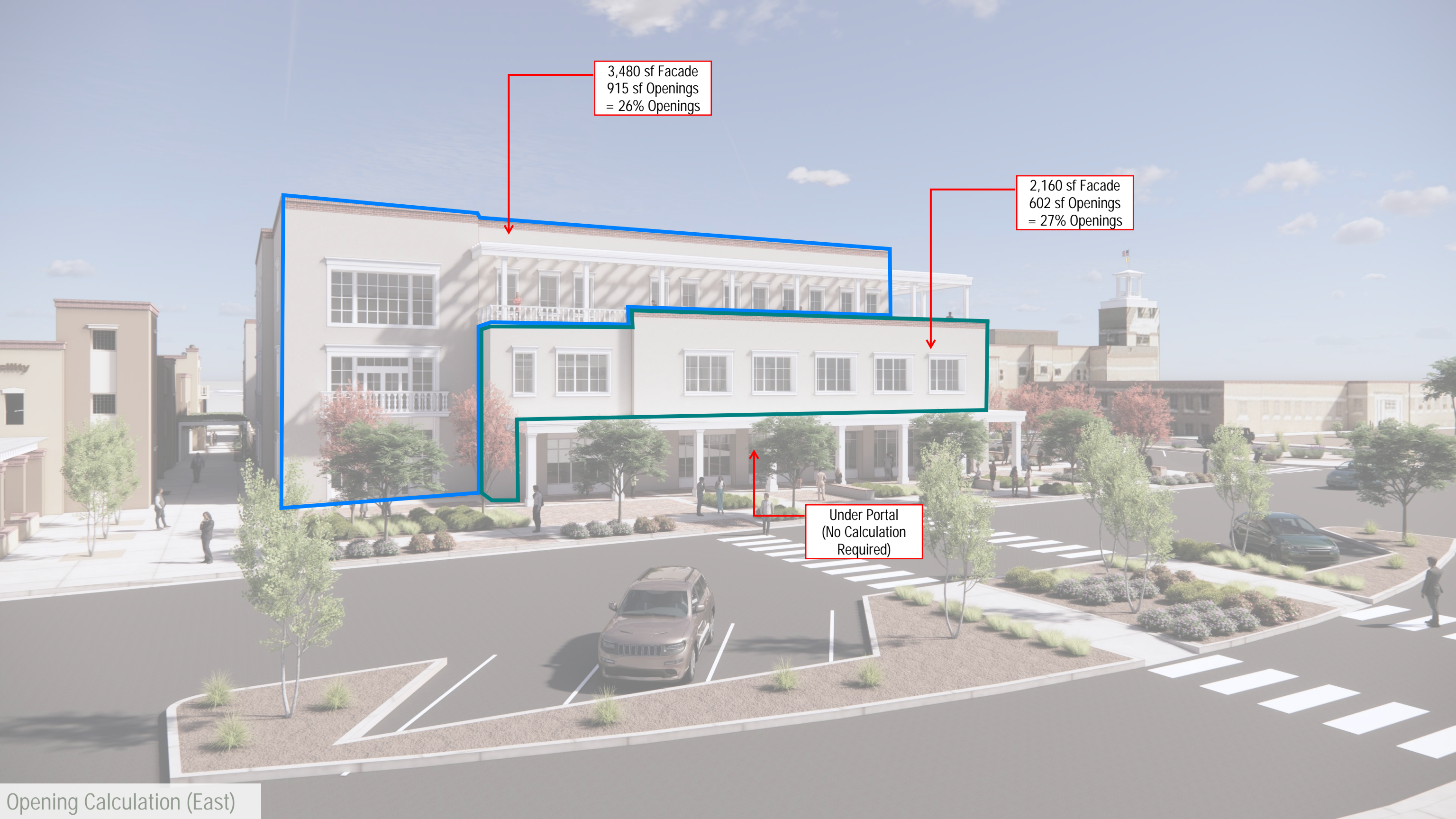
North Plaza

3,480 sf Facade  
915 sf Openings  
= 26% Openings

2,160 sf Facade  
602 sf Openings  
= 27% Openings

Under Portal  
(No Calculation  
Required)

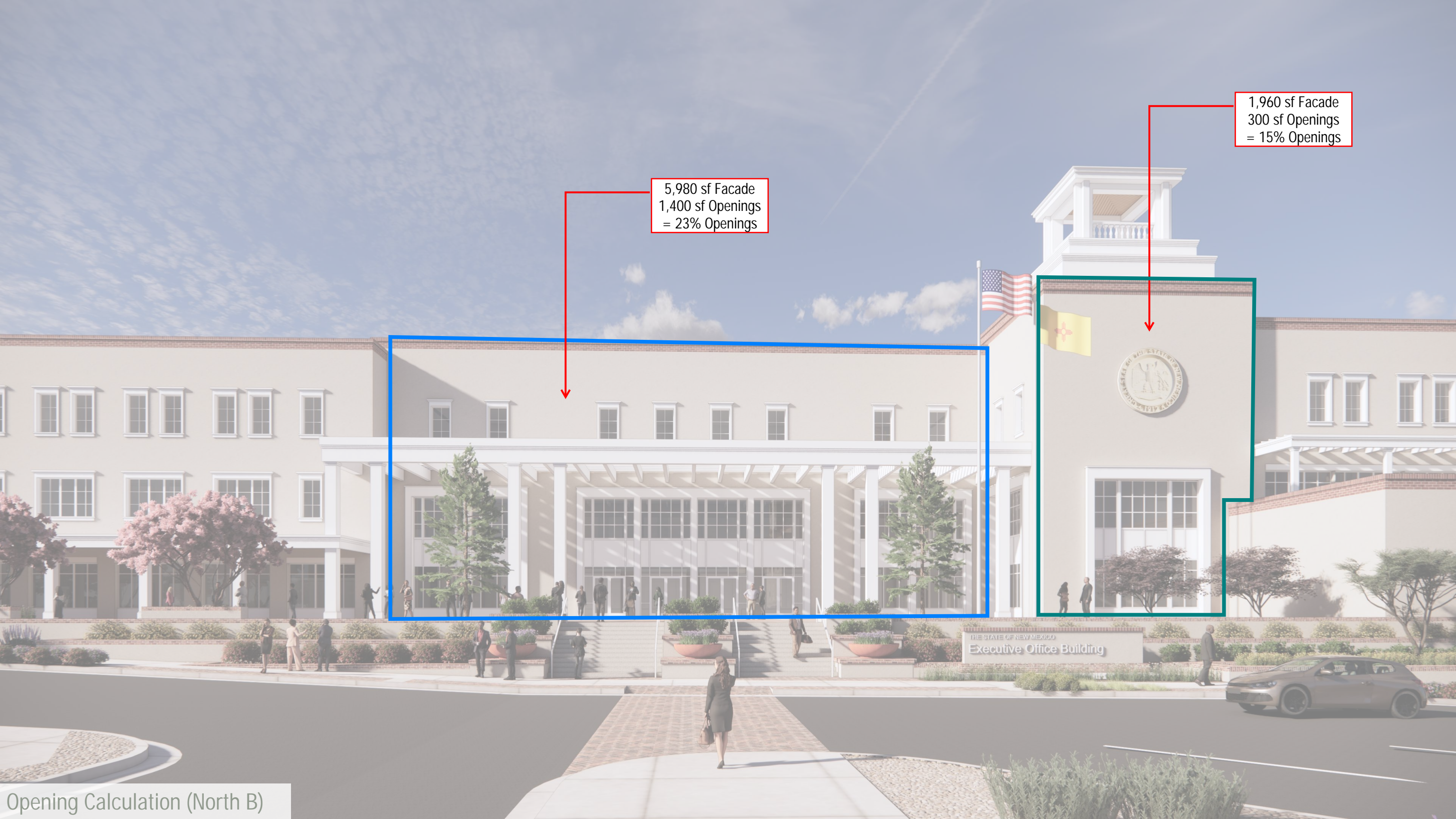
Opening Calculation (East)



1,176 sf Facade  
200 sf Openings  
= 17% Openings

5,028 sf Facade  
877 sf Openings  
= 18% Openings

Under Portal  
(No Calculation  
Required)

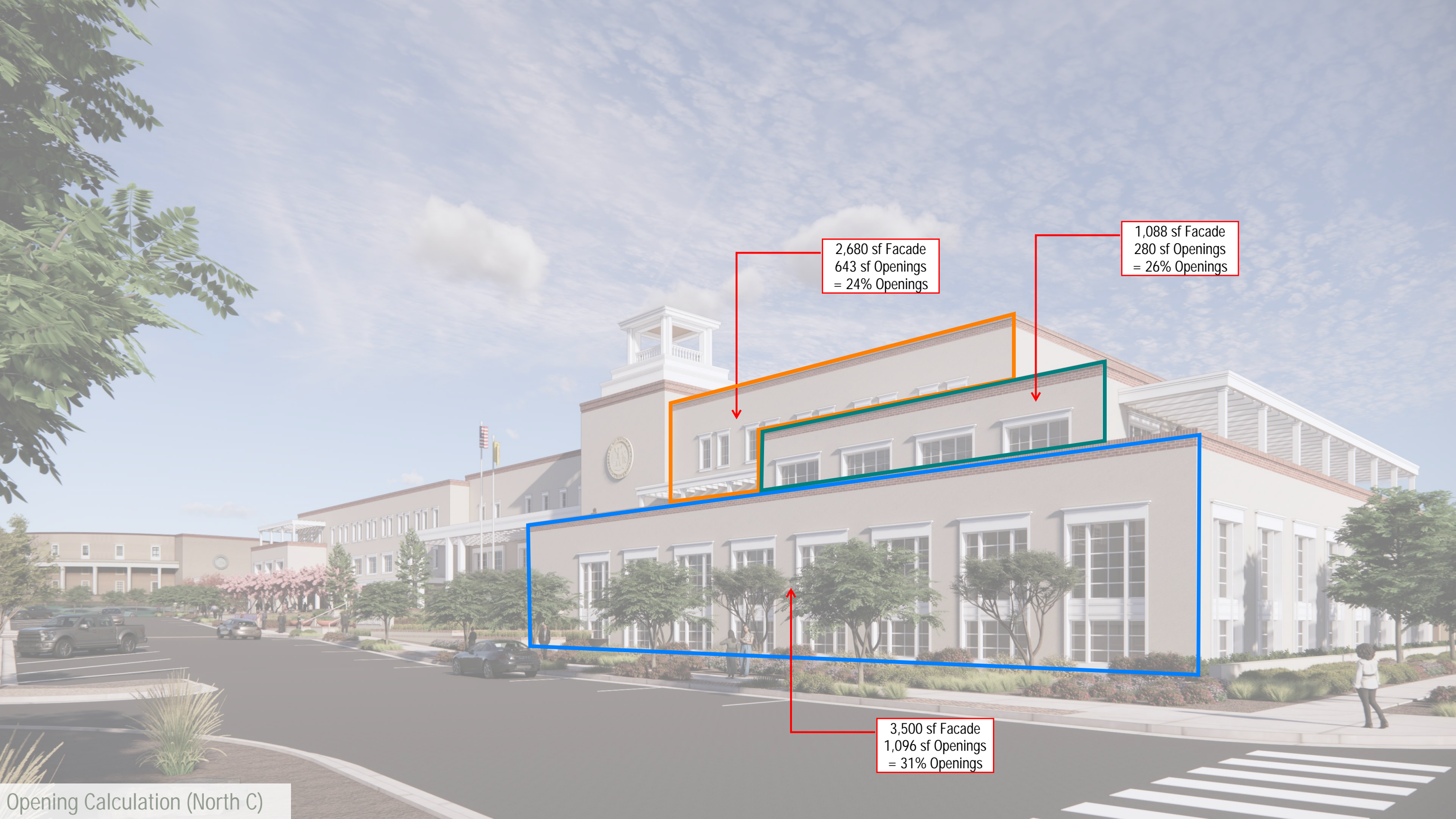


5,980 sf Facade  
1,400 sf Openings  
= 23% Openings

1,960 sf Facade  
300 sf Openings  
= 15% Openings

THE STATE OF NEW MEXICO  
Executive Office Building

Opening Calculation (North B)



2,680 sf Facade  
643 sf Openings  
= 24% Openings

1,088 sf Facade  
280 sf Openings  
= 26% Openings

3,500 sf Facade  
1,096 sf Openings  
= 31% Openings