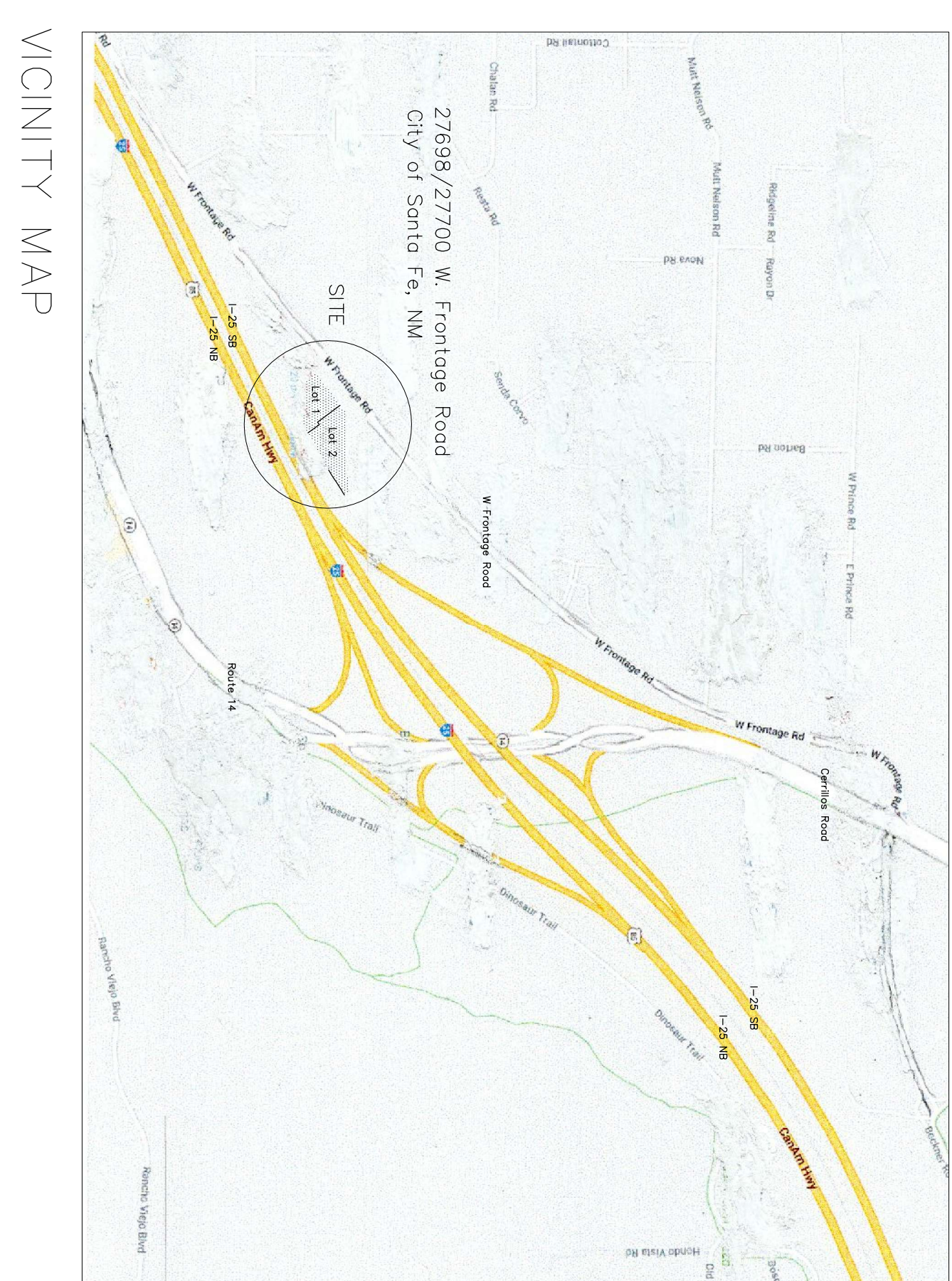


1 SITE PLAN
A101 1" = 20'



**SITE PLAN
W/ VICINITY MAP**

RZX PROPERTY, LLC
BUSINESS OFFICES / MINI-STORAGE UNITS
SANTA FE, NM
 PROJECT: 2001 DATE: January 16, 2026

PROJECT:
 Business Offices/Mini-Storage Units
 27698/27700 W. Frontage Road
 Santa Fe, New Mexico
 ARCHITECT:
 Peter R. Bond, NM Architect
 NM Registration No.: 004946

REVISION / DATE

DEVELOPER/AGENT FOR LLC
 Peter R. Bond, Agent/Architect
 15 Bosque Loop
 Santa Fe, NM 87508
 505/992-0500
 pbond.mail@gmail.com

GENERAL NOTES:
 All work to be completed in compliance with all Federal, State, County, & Township codes and ordinances. Verify all dimensions prior to construction. Do not scale drawings in lieu of dimensions provided or implied. This drawing is an instrument of service of the Architect, Peter R. Bond, and cannot be used on this or any other project without the Architect's prior written consent.