

# City of Santa Fe Water



## 2026 Asset Management Plan Update

Taylor Jurgens – Engineer, Water Division



# Agenda

- Asset management overview
- Current assets and asset management practices
- Progress made in 2025
- Next steps in 2026
- New software overview



# Need for Asset Management Plan

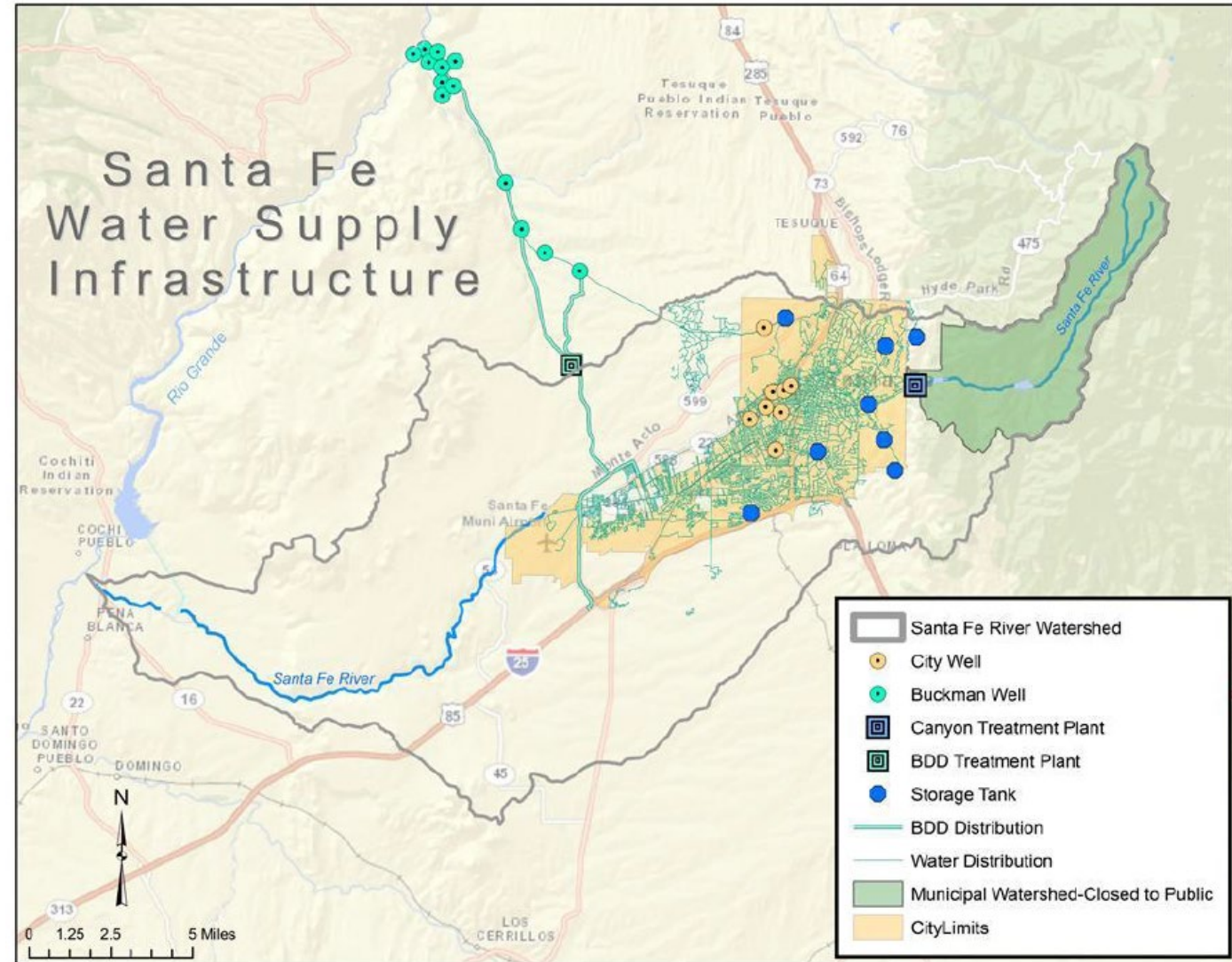
- Improved resource allocation
- More effective operation, maintenance, and planning
- Industry standard
- New Mexico Water Trust Board and SRF Funding
  - Additional requirement to update Governing Body or appropriate committees of asset management status on an annual basis
- City of Santa Fe Resolution 2015-35



# Overview of existing assets

- 630+ miles of mains, 3,300+ hydrants, and 10,500+ valves
- 9 storage tanks, 9 City wells, and 13 Buckman wells
- 2 water treatment plants and 2 reservoirs
- Over \$1 billion in assets

Figure 1-2 Santa Fe Water Supply Infrastructure



# Current asset management practices

- 2020 asset management plan
- Priority line replacement program
- PRV rehab and replacement
- 5-yr CIP program
- Antero CMMS software for Source of Supply
- Asset inventory updates in GIS



# Asset Management Program – Progress in 2025

- Executed contract for new OpenGov Enterprise Asset Management software
- Began software implementation and developed test site
- Began using test site to perform work and update asset data
- Purchased tablets for use by field crews
- Implemented new VODA.ai software to identify high-risk mains for replacement



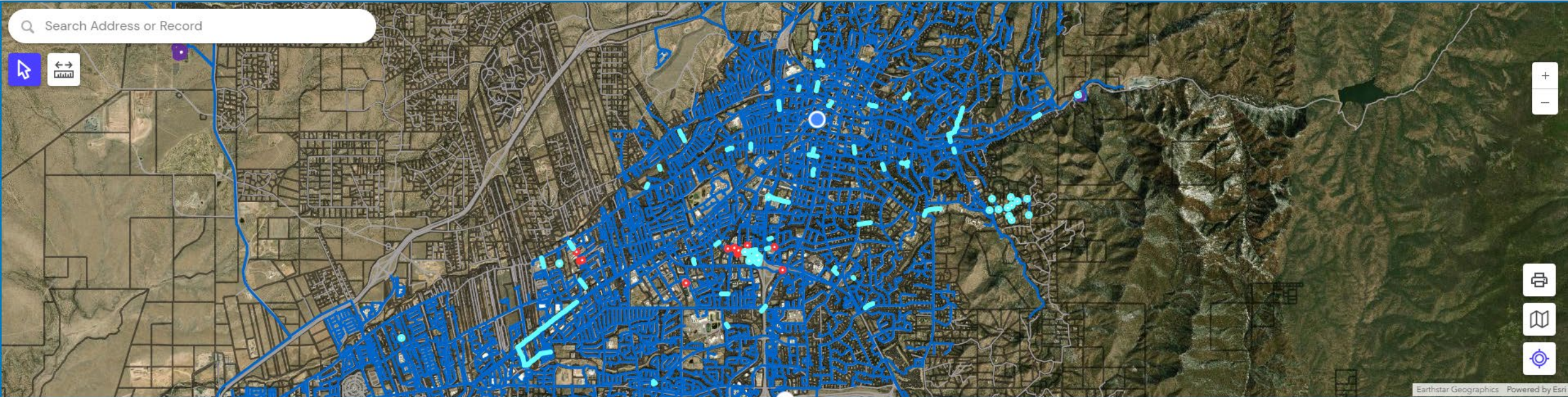
# Asset Management Program – Steps for 2026

- Go live with asset management software in March
- Continue learning and expanding capabilities with asset management software
- Evaluate potential new integrations with other software
- Perform updated model run in VODA.ai





# OpenGov Asset Management



Tasks **196** Requests 19 Assets 12,261

[View Layers](#)

Show Selected  Tasks of 0 Total Records

[Map Filter Off](#)

Sort ▼

Actions ▼

⌵

<input type="checkbox"/>	Task ID	Activity	Asset	Entry Date	Priority	Status	Due Date	Estimated Start ...	Estimated ...	Actual Start D...	Actual Stop D...	Entered By	Proximi...
<input type="checkbox"/>	<a href="#">9901</a>	Equipment Maintenance	Non-Asset	11/19/2025 02:...	Important	In Progress		11/19/2025	11/19/2025	11/19/2025		trjurgens	3.1 mi
<input type="checkbox"/>	<a href="#">9831</a>	Rebuild	<a href="#">WTP Pump CITYWELL...</a>	11/19/2025 01:...	Medium	In Progress		11/19/2025	11/19/2025	11/19/2025		trjurgens	— mi
<input type="checkbox"/>	<a href="#">9575</a>	Inspect	<a href="#">Water Main WP4645</a>	11/18/2025 12:4...	None	Planned		11/18/2025	11/18/2025			jpdelmar	1.3 mi
<input type="checkbox"/>	<a href="#">9576</a>	Shut Off	<a href="#">Water Main WP1301</a>	11/18/2025 12:4...	None	Planned		11/18/2025	11/18/2025			trjurgens	1.8 mi

# OpenGov Asset Management



**55PMP22002**

WTP Pump

Type : Submersible

Model :

Locator Address : Santa Fe

Installed : 08/01/2010

Replaced :

Total Cost To Date

**\$4,123**

Risk Score

**-/25**

Data Not Available



Estimated OCI

Unknown Risk



Data Not Available

**Details** Attachments 1 Inspections 0 Tasks 181 Assessments 0 Meter Readings 0



Location



Basic Information

Address Number



Cancel

Save

# OpenGov Asset Management

← Back



## Task 9575

Inspect

— None Priority

Completed

Estimated vs Actual Cost

Estimate: \$0

0% Used

Actual Cost: \$450

Asset

[Water Main WP4645](#)

Cost Per Unit

\$0.00

Labor Cost

\$80

Equipment Cost

\$370

[Complete Task](#)

[Enter Resources](#)

Total Cost

\$450

Labor Hours

8

Material Cost

\$0

Other Cost

\$0

Start Date: 01/07/2026

Stop Date: 01/07/2026

Inspection

[Task 9575 Inspect](#)

Complete

Taylor Jurgens  
On 01/07/2026

OCI

0

Failed

- [Details](#)
- [Attachments 0](#)
- [Assignments 1](#)
- [Labor Log 2](#)
- [Equipment Log 1](#)
- [Material Log 1](#)
- [Other Log 0](#)
- [Material Planning 0](#)
- [Calendar Events 0](#)



Location

Location

Basic Information

Cancel

[Save & Complete](#)

[Save](#)



# OpenGov Asset Management

## Dashboard

Refresh

Manage Gadgets

Gadget Library

### Percent of Tasks Completed (Example Only)

Current  
**20.61%**  
148

Goal  
**95%**  
682

### Overdue Requests 1+ Week Old (Example Only)

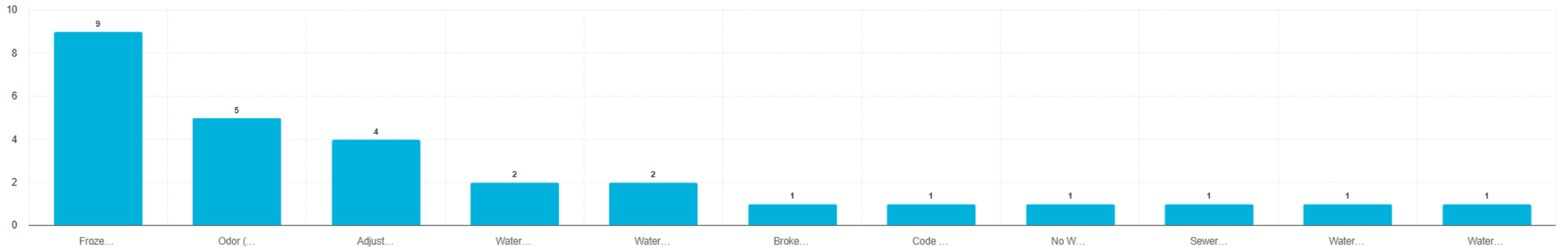
**16** total records

16 Records

Actions

Due D...	Entry Date	Full Name	Issue	Reque...	Stat...	Priority	
	11/18/2025 02:14 PM		Adjust W...	<a href="#">35504</a>	Open	None	
	11/18/2025 02:15 PM		Frozen W...	<a href="#">35505</a>	Open	None	
	11/18/2025 02:16 PM		Frozen W...	<a href="#">35508</a>	Open	None	
	11/18/2025 02:16 PM		Water M...	<a href="#">35509</a>	Open	None	
	11/18/2025 02:16 PM		Frozen W...	<a href="#">35510</a>	Open	None	

### Most Frequent Requests Last 60 Days (Example Only)



V O D A  .ai

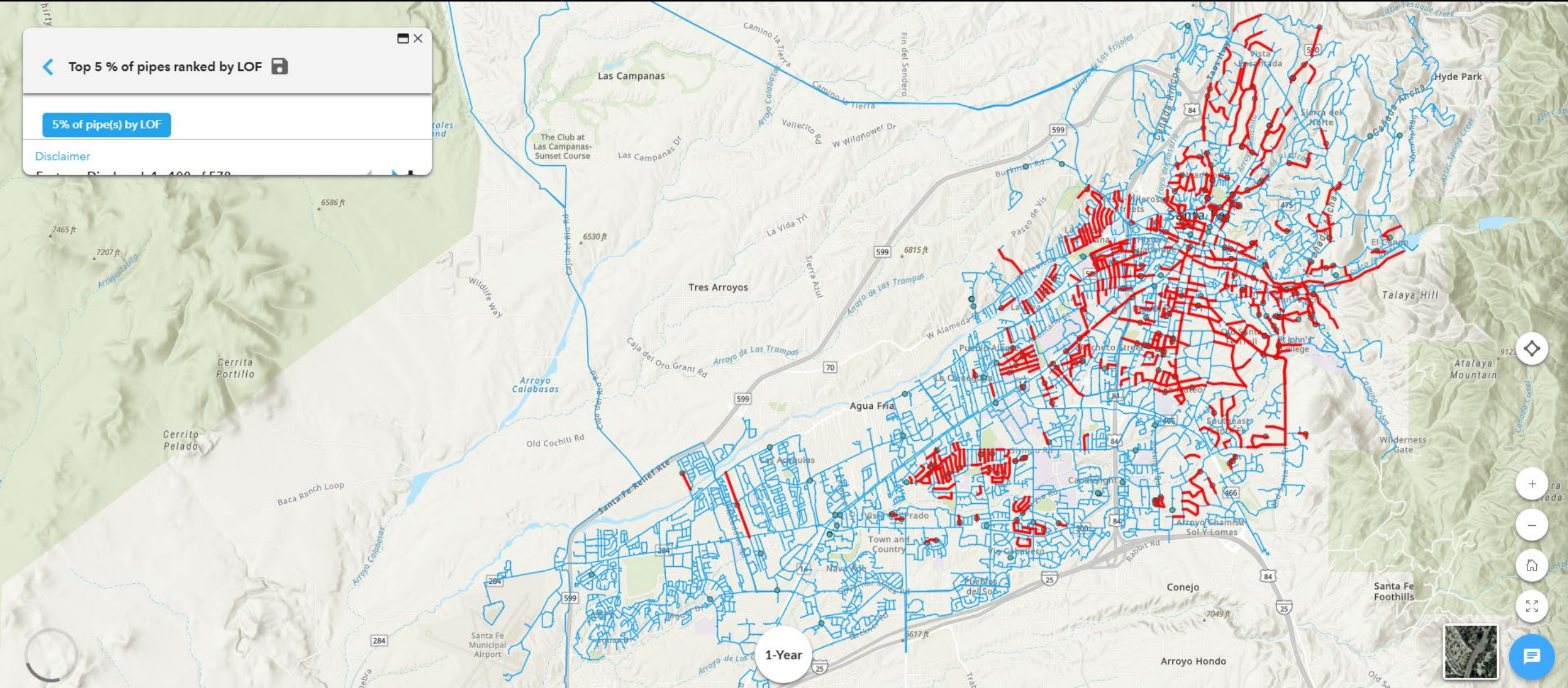


# VODA.ai Software

Top 5 % of pipes ranked by LOF

5% of pipe(s) by LOF

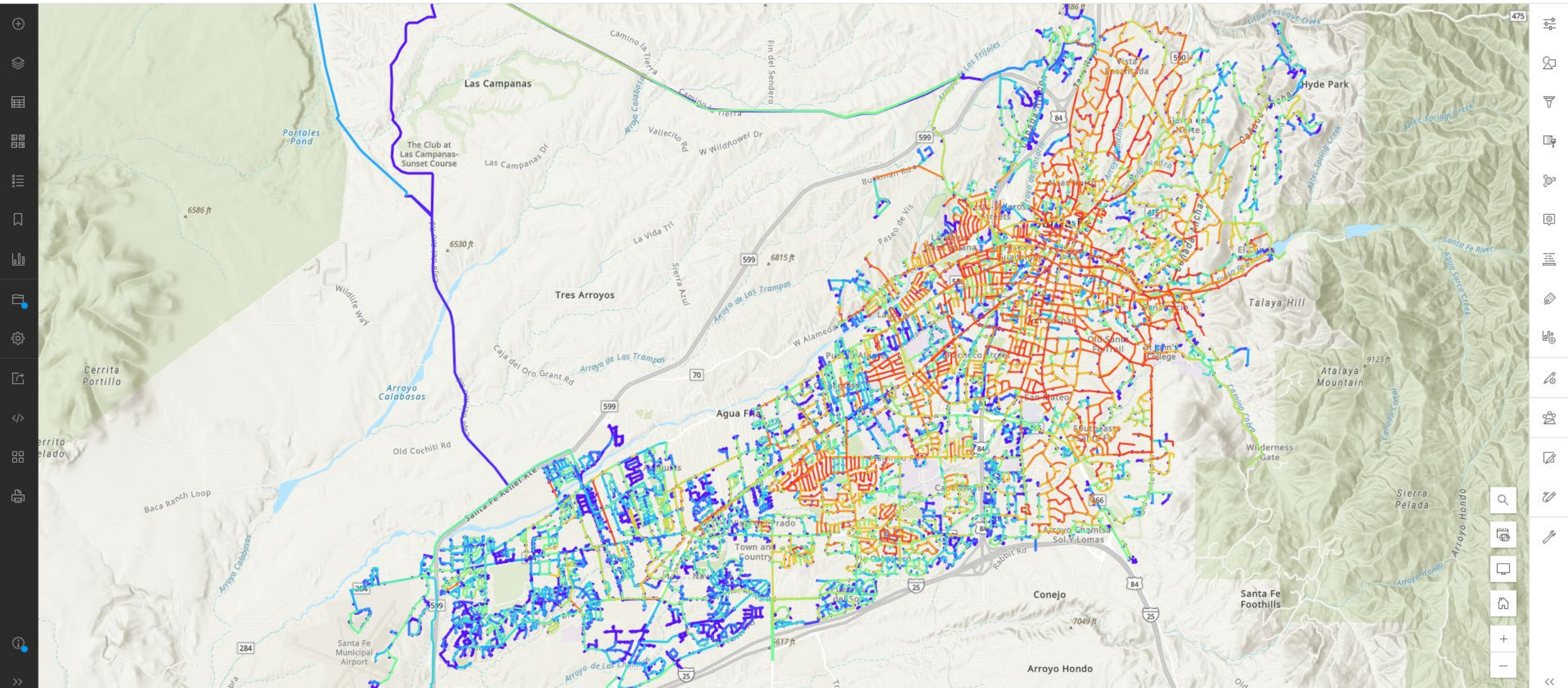
Disclaimer



# VODA.ai Software

Water Distribution System

Taylor Jurgens  
trjurgens\_TheCityDifferent



# VODA.ai Software

## Analytics

### Charts

Pipe RUL

RUL by material

Failure rate by condition

Failure rate by material

Pipe by material

Pipe by install year

Pipe % by age

Failures by year

Failures by install year

### Maps

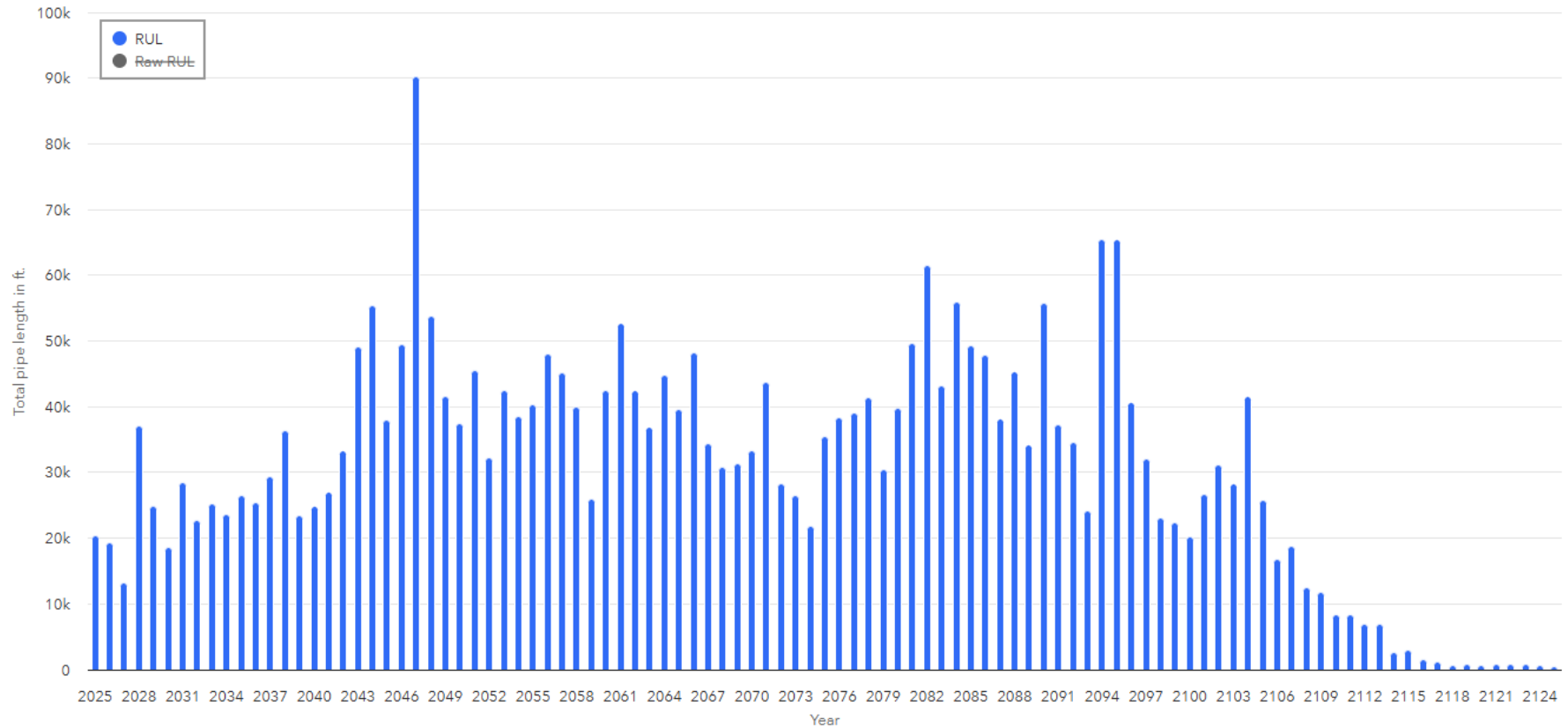
Network development

Failures by year

Cumulative failures

### Tables

### Length of pipe reaching end of useful life



Any Questions?

