

VICINITY MAP
SCALE: N.T.S.

DEVELOPMENT PLAN FOR THE ESPLANADE COMMERCIAL CENTER

LOCATED ON SA AGENTS, TOWN WITHIN SECTION 16, TOWNSHIP 21 NORTH, RANGE 18 WEST, SANTA FE COUNTY, NEW MEXICO.

DEDICATION AND APPROVAL:

THE APPLICANT HEREBY AGREES TO DEDICATE THE PROJECT SITE TO THE CITY AND COUNTY OF SANTA FE, NEW MEXICO, FOR THE USE OF THE COMMUNITY AS A COMMERCIAL CENTER. THE CITY AND COUNTY OF SANTA FE, NEW MEXICO, HAS REVIEWED AND APPROVED THE DEVELOPMENT PLAN AND THE APPLICANT'S AGREEMENT TO DEDICATE THE PROJECT SITE TO THE CITY AND COUNTY OF SANTA FE, NEW MEXICO.

DATE: 5/17/10

BY: [Signature]

FOR: [Signature]

SPECIAL BUILDING PERMIT CONDITIONS:

The following are conditions of approval for issuance of building permits for Units 1, 2, 3, 4, 5, 6, 7, 8, 9, 10, 11, 12, 13, 14, 15, 16, 17, 18, 19, 20, 21, 22, 23, 24, 25, 26, 27, 28, 29, 30, 31, 32, 33, 34, 35, 36, 37, 38, 39, 40, 41, 42, 43, 44, 45, 46, 47, 48, 49, 50, 51, 52, 53, 54, 55, 56, 57, 58, 59, 60, 61, 62, 63, 64, 65, 66, 67, 68, 69, 70, 71, 72, 73, 74, 75, 76, 77, 78, 79, 80, 81, 82, 83, 84, 85, 86, 87, 88, 89, 90, 91, 92, 93, 94, 95, 96, 97, 98, 99, 100.

1. The building shall be constructed in accordance with the approved plans and specifications.

2. The building shall be constructed in accordance with the approved plans and specifications.

3. The building shall be constructed in accordance with the approved plans and specifications.

4. The building shall be constructed in accordance with the approved plans and specifications.

5. The building shall be constructed in accordance with the approved plans and specifications.

6. The building shall be constructed in accordance with the approved plans and specifications.

7. The building shall be constructed in accordance with the approved plans and specifications.

8. The building shall be constructed in accordance with the approved plans and specifications.

9. The building shall be constructed in accordance with the approved plans and specifications.

10. The building shall be constructed in accordance with the approved plans and specifications.

CITY APPROVALS

APPROVED BY THE CITY OF SANTA FE PLANNING DEPARTMENT ON THE 15TH MEETING OF THE CITY PLANNING COMMISSION ON 5/17/10.

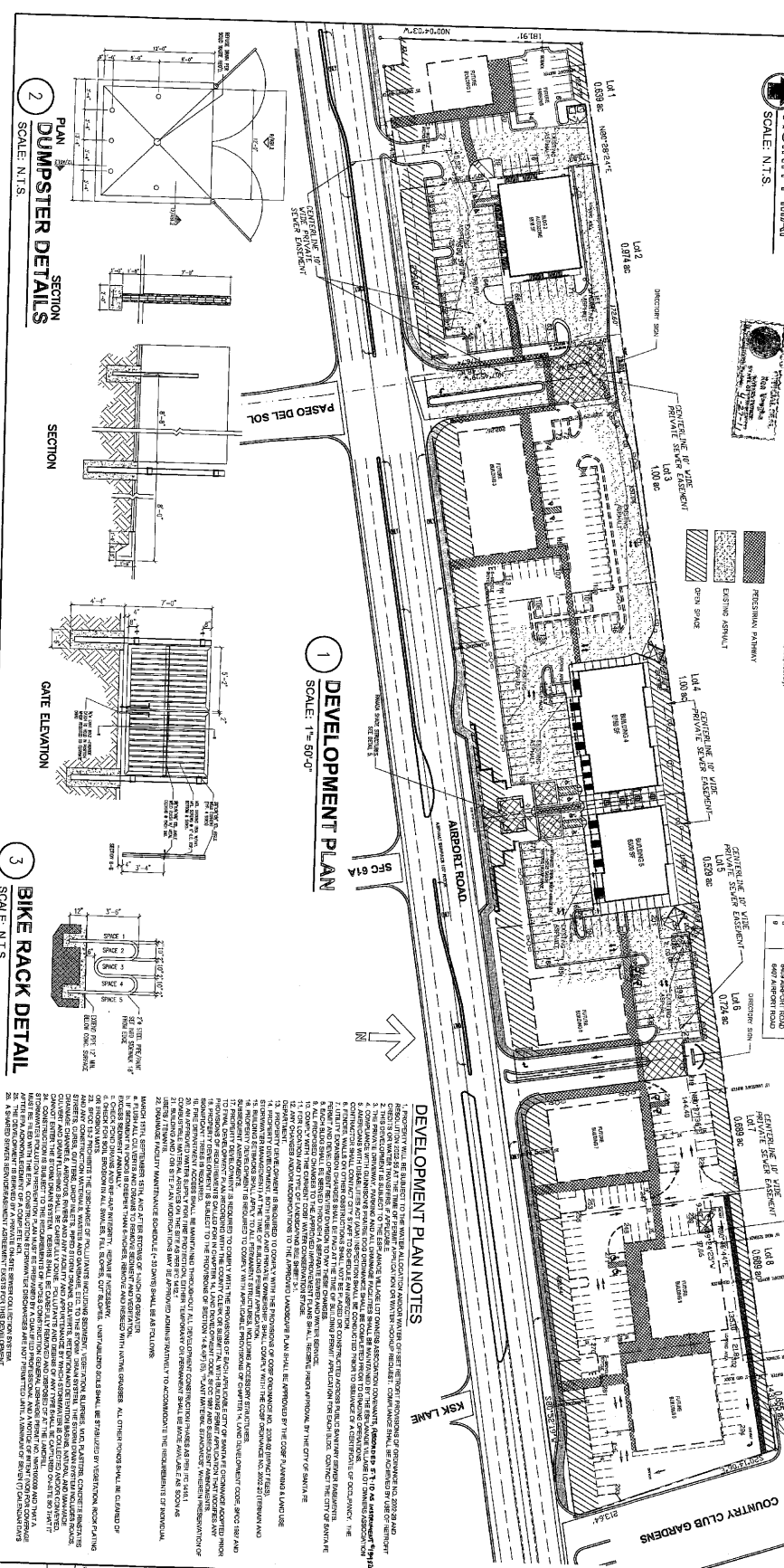
DATE: 5/17/10

BY: [Signature]

FOR: [Signature]

SITE DATA:

LOT #	ACRES	AREA (SQ. FT.)
1	0.039	3,360
2	0.039	3,360
3	0.039	3,360
4	0.039	3,360
5	0.039	3,360
6	0.039	3,360
7	0.039	3,360
8	0.039	3,360
9	0.039	3,360
10	0.039	3,360
11	0.039	3,360
12	0.039	3,360
13	0.039	3,360
14	0.039	3,360
15	0.039	3,360
16	0.039	3,360
17	0.039	3,360
18	0.039	3,360
19	0.039	3,360
20	0.039	3,360
21	0.039	3,360
22	0.039	3,360
23	0.039	3,360
24	0.039	3,360
25	0.039	3,360
26	0.039	3,360
27	0.039	3,360
28	0.039	3,360
29	0.039	3,360
30	0.039	3,360
31	0.039	3,360
32	0.039	3,360
33	0.039	3,360
34	0.039	3,360
35	0.039	3,360
36	0.039	3,360
37	0.039	3,360
38	0.039	3,360
39	0.039	3,360
40	0.039	3,360
41	0.039	3,360
42	0.039	3,360
43	0.039	3,360
44	0.039	3,360
45	0.039	3,360
46	0.039	3,360
47	0.039	3,360
48	0.039	3,360
49	0.039	3,360
50	0.039	3,360
51	0.039	3,360
52	0.039	3,360
53	0.039	3,360
54	0.039	3,360
55	0.039	3,360
56	0.039	3,360
57	0.039	3,360
58	0.039	3,360
59	0.039	3,360
60	0.039	3,360
61	0.039	3,360
62	0.039	3,360
63	0.039	3,360
64	0.039	3,360
65	0.039	3,360
66	0.039	3,360
67	0.039	3,360
68	0.039	3,360
69	0.039	3,360
70	0.039	3,360
71	0.039	3,360
72	0.039	3,360
73	0.039	3,360
74	0.039	3,360
75	0.039	3,360
76	0.039	3,360
77	0.039	3,360
78	0.039	3,360
79	0.039	3,360
80	0.039	3,360
81	0.039	3,360
82	0.039	3,360
83	0.039	3,360
84	0.039	3,360
85	0.039	3,360
86	0.039	3,360
87	0.039	3,360
88	0.039	3,360
89	0.039	3,360
90	0.039	3,360
91	0.039	3,360
92	0.039	3,360
93	0.039	3,360
94	0.039	3,360
95	0.039	3,360
96	0.039	3,360
97	0.039	3,360
98	0.039	3,360
99	0.039	3,360
100	0.039	3,360



DEVELOPMENT PLAN NOTES

1. THE DEVELOPMENT PLAN IS SUBMITTED TO THE CITY OF SANTA FE FOR REVIEW AND APPROVAL.
2. THE DEVELOPMENT PLAN IS SUBJECT TO THE CITY OF SANTA FE'S ZONING ORDINANCES AND OTHER APPLICABLE LAWS.
3. THE DEVELOPMENT PLAN IS SUBJECT TO THE CITY OF SANTA FE'S PLANNING DEPARTMENT'S REVIEW AND APPROVAL.
4. THE DEVELOPMENT PLAN IS SUBJECT TO THE CITY OF SANTA FE'S PLANNING COMMISSION'S REVIEW AND APPROVAL.
5. THE DEVELOPMENT PLAN IS SUBJECT TO THE CITY OF SANTA FE'S CITY COUNCIL'S REVIEW AND APPROVAL.
6. THE DEVELOPMENT PLAN IS SUBJECT TO THE CITY OF SANTA FE'S PLANNING DEPARTMENT'S REVIEW AND APPROVAL.
7. THE DEVELOPMENT PLAN IS SUBJECT TO THE CITY OF SANTA FE'S PLANNING COMMISSION'S REVIEW AND APPROVAL.
8. THE DEVELOPMENT PLAN IS SUBJECT TO THE CITY OF SANTA FE'S CITY COUNCIL'S REVIEW AND APPROVAL.
9. THE DEVELOPMENT PLAN IS SUBJECT TO THE CITY OF SANTA FE'S PLANNING DEPARTMENT'S REVIEW AND APPROVAL.
10. THE DEVELOPMENT PLAN IS SUBJECT TO THE CITY OF SANTA FE'S PLANNING COMMISSION'S REVIEW AND APPROVAL.
11. THE DEVELOPMENT PLAN IS SUBJECT TO THE CITY OF SANTA FE'S CITY COUNCIL'S REVIEW AND APPROVAL.
12. THE DEVELOPMENT PLAN IS SUBJECT TO THE CITY OF SANTA FE'S PLANNING DEPARTMENT'S REVIEW AND APPROVAL.
13. THE DEVELOPMENT PLAN IS SUBJECT TO THE CITY OF SANTA FE'S PLANNING COMMISSION'S REVIEW AND APPROVAL.
14. THE DEVELOPMENT PLAN IS SUBJECT TO THE CITY OF SANTA FE'S CITY COUNCIL'S REVIEW AND APPROVAL.
15. THE DEVELOPMENT PLAN IS SUBJECT TO THE CITY OF SANTA FE'S PLANNING DEPARTMENT'S REVIEW AND APPROVAL.
16. THE DEVELOPMENT PLAN IS SUBJECT TO THE CITY OF SANTA FE'S PLANNING COMMISSION'S REVIEW AND APPROVAL.
17. THE DEVELOPMENT PLAN IS SUBJECT TO THE CITY OF SANTA FE'S CITY COUNCIL'S REVIEW AND APPROVAL.
18. THE DEVELOPMENT PLAN IS SUBJECT TO THE CITY OF SANTA FE'S PLANNING DEPARTMENT'S REVIEW AND APPROVAL.
19. THE DEVELOPMENT PLAN IS SUBJECT TO THE CITY OF SANTA FE'S PLANNING COMMISSION'S REVIEW AND APPROVAL.
20. THE DEVELOPMENT PLAN IS SUBJECT TO THE CITY OF SANTA FE'S CITY COUNCIL'S REVIEW AND APPROVAL.

REVISIONS

NO.	DATE	DESCRIPTION
1	10/2/2008	INITIAL DESIGN
2	10/2/2008	REVISED DESIGN
3	10/2/2008	REVISED DESIGN
4	10/2/2008	REVISED DESIGN
5	10/2/2008	REVISED DESIGN
6	10/2/2008	REVISED DESIGN
7	10/2/2008	REVISED DESIGN
8	10/2/2008	REVISED DESIGN
9	10/2/2008	REVISED DESIGN
10	10/2/2008	REVISED DESIGN

AGNEW & MILSUD ARCHITECTS

307 CAMPANO ALBUM
SANTA FE, NM 87505
P. 505.999.3111
F. 505.999.3111
www.agnewmilsud.com

DEVELOPMENT PLAN
ESPLANADE VILLAGE SUBDIVISION
6421 AIRPORT ROAD
Santa Fe, NM

717045