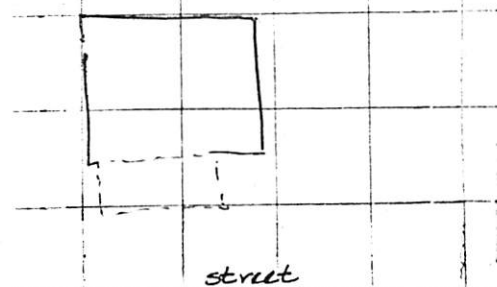
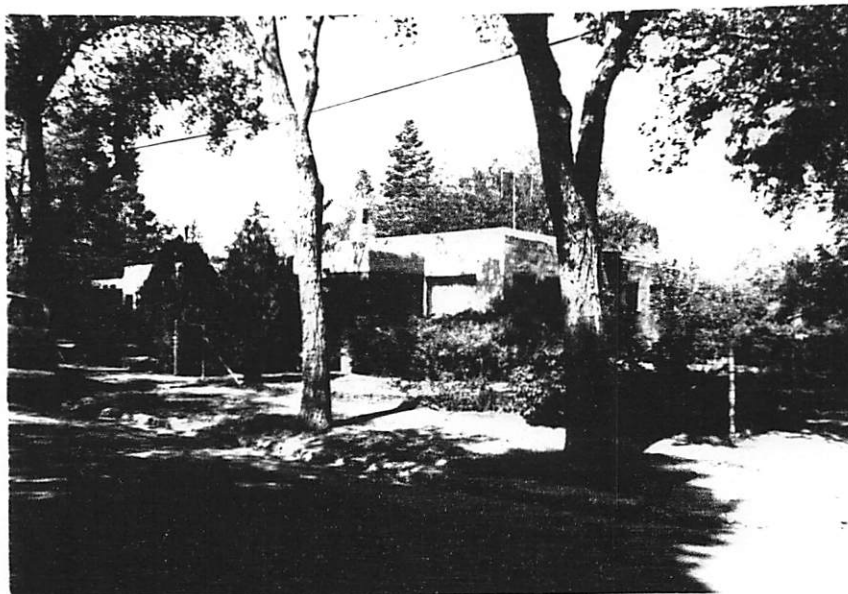


building threatened? yes	surveyed date 7-82 by E.T.	county Santa Fe	ID no. 051600
field map Don Gaspar Neighborhood	number 268	UTM reference easting zone 12 13 414920	northing 3947370
location description 800 Gildersleeve		city/town Santa Fe	
building name		legal description tensp N S range E W sec 1/4 1/4	
film roll by E.T. no.	9	negative nos. 24	32
loc. of neg. City of Santa Fe		building-site plan	



date of construction
1930 estimate 1928 actual

source
Sanborn City Directory

use
present residential

other

historic residential

other

style pueblo revival	foundation material n/v
architectural features parpet canales vigas portal detailing fixed pane windows wd. d/h	wall material/surface stucco/tile

condition
 excellent good
 fair deteriorating

degree of remodeling
 minor moderate major

describe:
windows

architectural features

parpet canales vigas
portal detailing
fixed pane windows
wd. d/h

surroundings
res

relationship to surroundings
 similar not similar

district potential
 yes no

significance
 significant contributing

comments
St. trees
wire fence

1936 - cd - sheets RR
1928 cd - sheets RR bk pr. SF Bldrs Supply
1930 Sanborn

supporting intrusive

associated buildings? yes
what type?
garage

if inventoried, list ID nos.

see back? yes