

RPA & Associates, LLC.

PRESERVING OUR HISTORY

508 Ortega Rd NW Los Ranchos de Albuquerque, NM 87114
P.O. Box 10328 Albuquerque, NM 87184
505-379-7900
rpahistoric@gmail.com



TO JAP Architect
P.O Box 22986
Santa Fe, NM 87502
japadillaarchitect@gmail.com

JOB	DATE
119 CAMINO SANTIAGO, SANTA FE, NM 87501	08/11/2025

LOCATION	DESCRIPTION
<u>EAST</u>	
DR #1	32 x 81 RH INSWING DOOR 6-PANEL SIMPSON
<u>SOUTH</u>	
DR #2	30 x 81 LH INSWING DOOR 4-LT/3-PANEL
<u>EAST</u>	
A	64 x 31 ½ XO HORIZONTAL SLIDER 1-LT ANDERSEN
B	64 x 31 ½ XO HORIZONTAL SLIDER 1-LT ANDERSEN
DR #3	36 x 81 LH INSWING DOOR 15-PANEL SIMPSON
DR #4	108 x 79 ½ XOO 1-LT/3-PANEL ALUMINUM MILL FINISH SLIDER GLASS DOOR
<u>NORTH</u>	
C	40 x 39 XO HORIZONTAL SLIDER 1-LT ANDERSEN
D	70 x 13 FXD STOPPED IN GLASS 1-LT
<u>WEST</u>	
DR #5	72 x 79 XO SGD BRONZE ALUMINUM INSULATED GLASS 1-LT 1994
E	64 x 31 HORIZONTAL SLIDER 1-LT ANDERSEN
F	64 x 31 HORIZONTAL SLIDER 1-LT ANDERSEN

In closing, my professional opinion is as follows:

Doors #1, #2, #3, #4 and #5 are non-historic however replaceable.

Windows A, B, C, E, F are historic. The units are Andersen 1964 however the tracks and the special locks are not manufactured anymore. The units would need to be replaced to function.

Window D is non-historic however replaceable.

If you have any questions, please contact me at 505-379-7900.

Assessment prepared by: *Ra N. Patterson*

RPA & ASSOCIATES, LLC | WINDOW & DOOR CONDITION AND INTEGRITY CODES

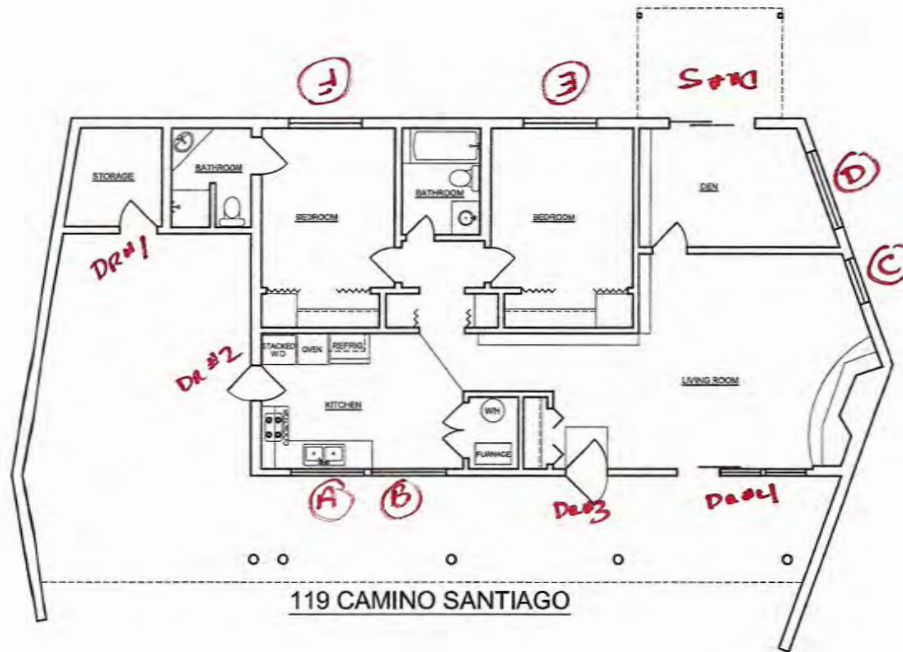
CODE	CONDITION AND INTEGRITY CODES
P = PREMIUM	EXTERIOR FINISHES AND SASH, FRAME, AND CASING MEMBER IN PREMIUM OR VERY GOOD CONDITION.
	PUTTY GLAZE INTACT.
	ONLY COSMECTIC TOUCH-UP, IF NEEDED.
S = SATISFACTORY	EXTERIOR FINISHES FADING AND WORN IN PLACES BUT STILL ADHERED TO THE WINDOW MEMBERS.
	PUTTY GLAZING CRACKING BUT INTACT AND ALL SASHES, FRAMES, AND CASING MEMBER WITH LESS THAN 30% -
	40% DETERIORATION.
F = FAIR	EXTERIOR FINISHES HAVE CRACKED & PEELED. MISSING TO BARE SURFACE.
	PUTTY GLAZING CRACKING AND MISSING IN 30% - 40% OF THE SASHES. ALL SASHES, FRAMES, AND CASINGS HAVE
	SOME MEMBERS 30% - 40% COMPLETELY DETERIORATED.
U = UNSATISFACTORY	EXTERIOR FINISHES HAVE COMPLETELY DETERIORATED.
	PUTTY GLAZING MOSTLY MISSING. ALL SASHES, FRAMES, AND CASING MEMBERS HAVE MORE THAN 30% - 40%
	DETERIORATION, BEYOND REPAIR.

NOTES:

RPA & ASSOCIATES, LLC | 119 CAMINO SANTIAGO, SANTA FE, NM 87501

LABEL	WINDOW & DOOR DESCRIPTION	CONDITION & INTEGRITY CODE	HISTORIC/NON-HISTORIC - AGE
DR #1	32 x 81 RH INSWING DOOR ALL WOOD 6-PANEL	S	NON-HISTORIC – SIMPSON (1996)
DR #2	30 x 81 RH INSWING DOOR ALL WOOD 4-LT/3-HORIZONTAL PANEL	S	NON-HISTORIC – SIMPSON (1996)
A	64 x 31 ½ XO HORIZONTAL SLIDER 1-LT	U	HISTORIC – ANDERSEN (1964) TRACKS AND ROLLERS UNREPAIRABLE AND PARTS NO LONGER AVAILABLE
B	64 x 31 ½ XO HORIZONTAL SLIDER 1-LT	U	HISTORIC – ANDERSEN (1964) TRACKS AND ROLLERS UNREPAIRABLE AND PARTS NO LONGER AVAILABLE
DR #3	36 x 81 LH INSWING DOOR ALL WOOD 15-PANEL	S	NON-HISTORIC – SIMPSON (1996)
DR #4	108 x 79 ½ SLIDING GLASS DOOR XOO ALL ALUMINUM MILL FINISH 1-LT	S	NON-HISTORIC – ALENCO ALUMINUM COOP (1978)
C	40 x 39 XO HORIZONTAL SLIDER 1-LT	U	HISTORIC – ANDERSEN (1964) TRACKS AND ROLLERS UNREPAIRABLE AND PARTS NO LONGER AVAILABLE
D	70 x 13 FXD STOPPED IN GLASS 1-LT	U	NON-HISTORIC – (1978)
E	64 x 31 XO HORIZONTAL SLIDER 1-LT	U	HISTORIC – ANDERSEN (1964) TRACKS AND ROLLERS UNREPAIRABLE AND PARTS NO LONGER AVAILABLE
F	64 x 31 XO HORIZONTAL SLIDER 1-LT	U	HISTORIC – ANDERSEN (1964) TRACKS AND ROLLERS UNREPAIRABLE AND PARTS NO LONGER AVAILABLE

NOTES:



NOTES

1. ALL CALCULATIONS INDICATE "GROSS" AREA.
2. ALL FIXTURES INDICATED ARE BUILT-IN.
3. ALL DIMENSIONS TO BE FIELD VERIFIED PRIOR TO ANY CONSTRUCTION.

AREA CALCULATIONS:

HEATED AREA 1169.82 SQ. FT.
 STORAGE 59.08 SQ. FT.

PROJECT:
 PLAZA DEL MONTE
 19 CAMINO SANTIAGO

DESCRIPTION:
 AS-BUILT DRAWING

CLIENT:
 C & S REAL ESTATE & DEVELOPMENT

SHEET #
01
 OF 01

ORIENTATION	DESIGNED BY	PM
	DRAFTED BY	N.A.
	CHECKED BY	PM
SCALE:	DATE:	REVISED:
1/8" = 1'-0"	04/21/2022	

2
 2
 3
 5

55-899-1199

119 Camino Santiago



East Elevation
Door #1



South Elevation
Door #2



East Elevation
Window A



East Elevation
Window B



Last
Elevation
Door #3



East
Elevation
Door #4



North Elevation
Window
C



North
Elevation
Window
D





West
Elevation
Door #5



West
Elevation
Window
E



West
Elevation
Window
F



119 Camino Santiago
West Elevation



119 Camino
Santiago
North Elevation



119 Camino Santiago
East Elevation



119 Camino Santiago
Typical Andersen
broken sliding
handles
Non replaceable



119 Camino
Santiago
Typical Andersen
bad sills that are
Non replaceable

