

In closing, my professional opinion is as follows:

Both the door and window are non-historic and they are from another project or site.

The door is a Simpson of the era of 1990 and the window sash is a barn sash purchased from a local lumber yard/hardware and installed horizontal put in is truly a vertical sash. This window and door have no historical value to them.

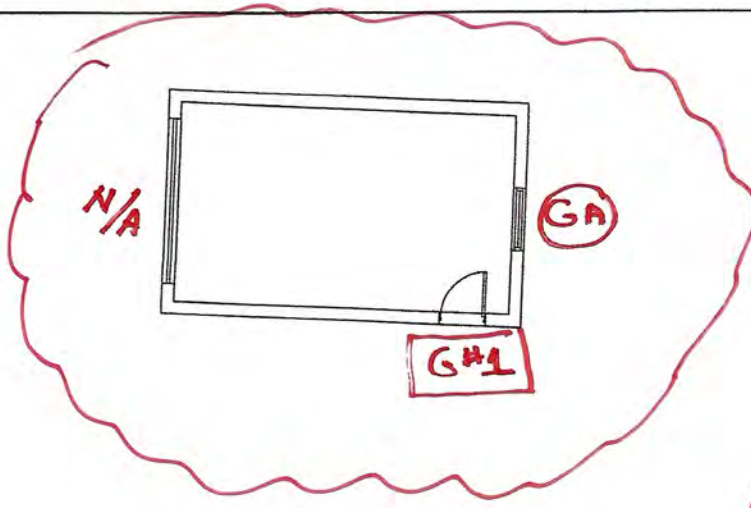
If you have any questions, please contact me at 505-379-7900.

Assessment prepared by: *Ra N. Patterson*

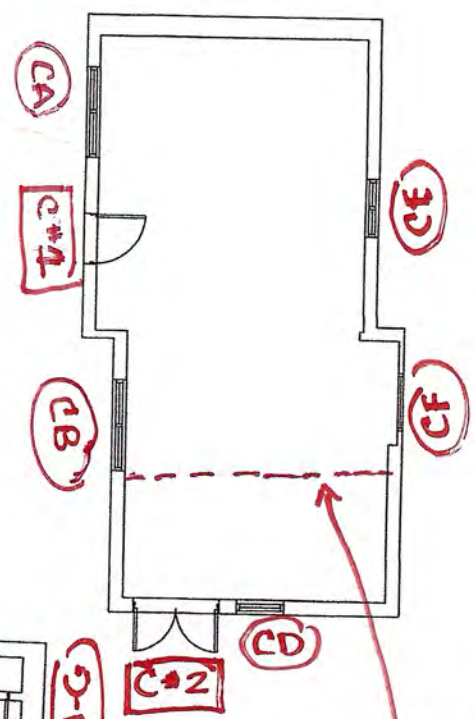
RPA & ASSOCIATES, LLC | WINDOW & DOOR CONDITION AND INTEGRITY CODES

CODE	CONDITION AND INTEGRITY CODES
P = PREMIUM	EXTERIOR FINISHES AND SASH, FRAME, AND CASING MEMBER IN PREMIUM OR VERY GOOD CONDITION.
	PUTTY GLAZE INTACT.
	ONLY COSMETIC TOUCH-UP, IF NEEDED.
S = SATISFACTORY	EXTERIOR FINISHES FADING AND WORN IN PLACES BUT STILL ADHERED TO THE WINDOW MEMBERS.
	PUTTY GLAZING CRACKING BUT INTACT AND ALL SASHES, FRAMES, AND CASING MEMBER WITH LESS THAN 30% -
	40% DETERIORATION.
F = FAIR	EXTERIOR FINISHES HAVE CRACKED & PEELED. MISSING TO BARE SURFACE.
	PUTTY GLAZING CRACKING AND MISSING IN 30% - 40% OF THE SASHES. ALL SASHES, FRAMES, AND CASINGS HAVE
	SOME MEMBERS 30% - 40% COMPLETELY DETERIORATED.
U = UNSATISFACTORY	EXTERIOR FINISHES HAVE COMPLETELY DETERIORATED.
	PUTTY GLAZING MOSTLY MISSING. ALL SASHES, FRAMES, AND CASING MEMBERS HAVE MORE THAN 30% - 40%
	DETERIORATION, BEYOND REPAIR.

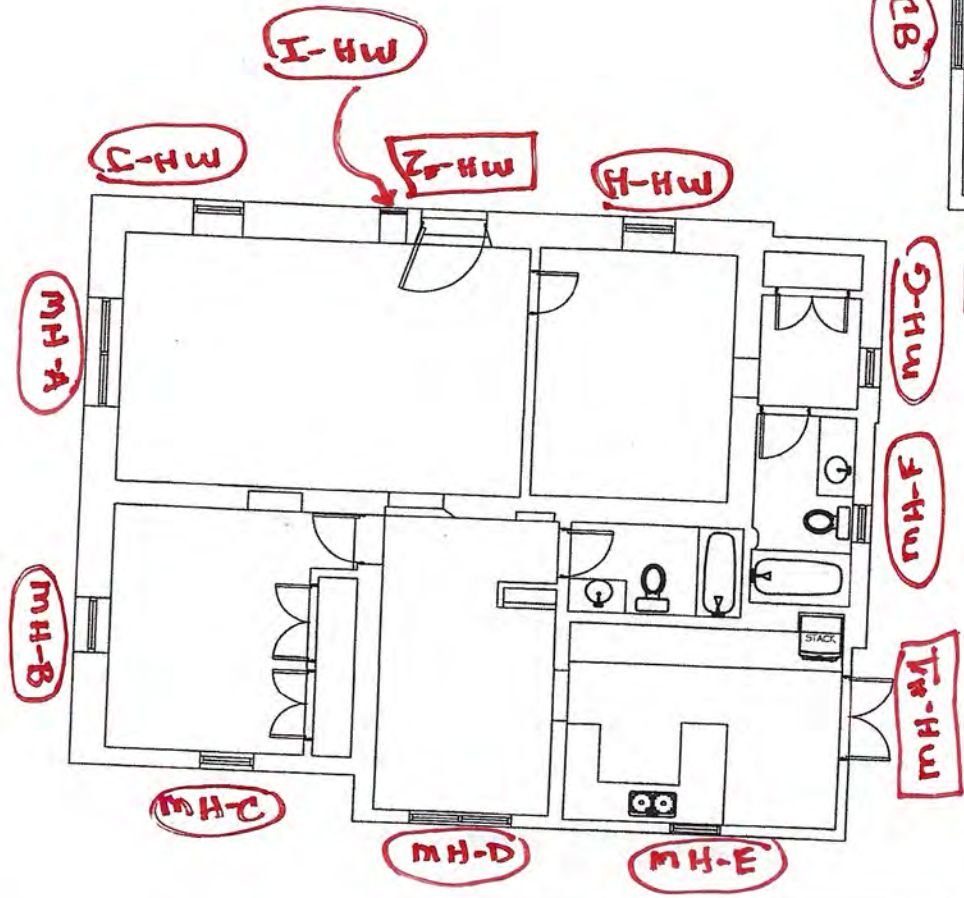
NOTES:



GARAGE



CLR STAY CO



AUSTIN-GREGORY
 RENOVATION
 433 CALLE LA PAZ,
 SANTA FE, NEW MEXICO

MAY 28, 2025
 SCALE: 3/32" = 1'-0"

Garage
Door
G#1





Garage
1990s Hinges
G#1

Garage
Window
GA

433 Calle La Paz
Garage
South Elevation



Showing
P
"Pozzio"
Window Lock



Text