

NOTE: ALL TRACT CORNERS MARKED BY IRON PIPE.

SANTA FE GRANT

CC. SEC'S 3-4



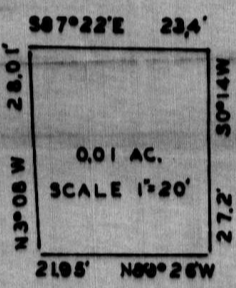
238,478

STATE OF NEW MEXICO
COUNTY OF SANTA FE
I, County Clerk, do hereby certify that this instrument was filed for record on the 15th day of December, 1959, at 10:00 o'clock A.M., and was duly recorded in book _____ page _____ of the records of the County of Santa Fe, New Mexico.

Witness my hand and seal of Santa Fe County, New Mexico, this 15th day of December, 1959.
JOE B. SMITH, COUNTY CLERK



INSERT
SUNSHINE ROYALTY CO. TO LISCHKE



SUNSHINE ROYALTY CO.

1/4 COR. SEC'S 3-4

ORIG. I.M. COR.

SEE INSERT



CERTIFICATE

I HEREBY CERTIFY THAT THIS PLAT AND THE FIELD NOTES THEREON ARE A COPY OF A SURVEY MADE IN THE FIELD BY ME MAR 1947 THRU DEC 1959 AND ARE TRUE AND CORRECT TO THE BEST OF MY KNOWLEDGE AND BELIEF

Jesse L. Garman

COMPOSITE PLAT
SHOWING LANDS OF
EVELYN H. LISCHKE
IN SEC. 3, T.16N.R.9E. N.M.P.M.
DEC. 1959 SCALE 1"=200'

