

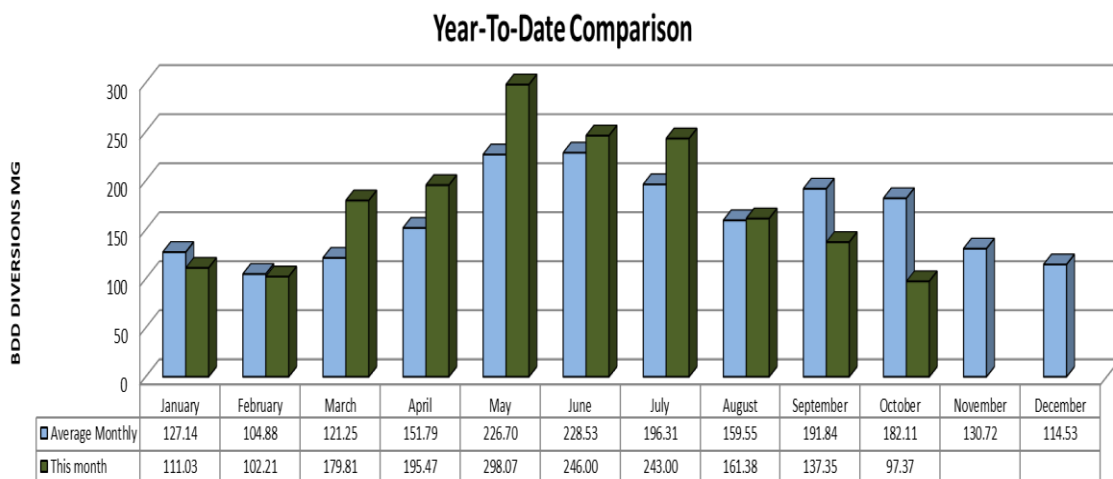
**Date:** November 6, 2025  
**To:** Buckman Direct Diversion Board  
**From:** Matthew Sandoval, BDD Operations Superintendent *MS*  
**Subject:** Update on BDD Operations for the Month of October 2025

**ITEM:**

1. This memorandum is to update the Buckman Direct Diversion Board (BDDDB) on BDD operations during the month of October 2025. The BDD diversions and deliveries have averaged, in Million Gallons Per Day (MGD), as follows:
  - a. Raw water diversions: 3.24 MGD
  - b. Drinking water deliveries through Booster Station 4A/5A: 2.90 MGD
  - c. Raw water delivery to Las Campanas at BS2A: 0.21 MGD
  
2. Water supply to the City and County from all sources.

	Oct-2025	Oct-2024
BDD	29.1%	56.1%
Canyon Rd WTP	64.6%	18.5%
City Wells	3.1%	9.6%
Buckman Wells	3.2%	15.8%

3. The BDD year-to-date diversions are depicted below:



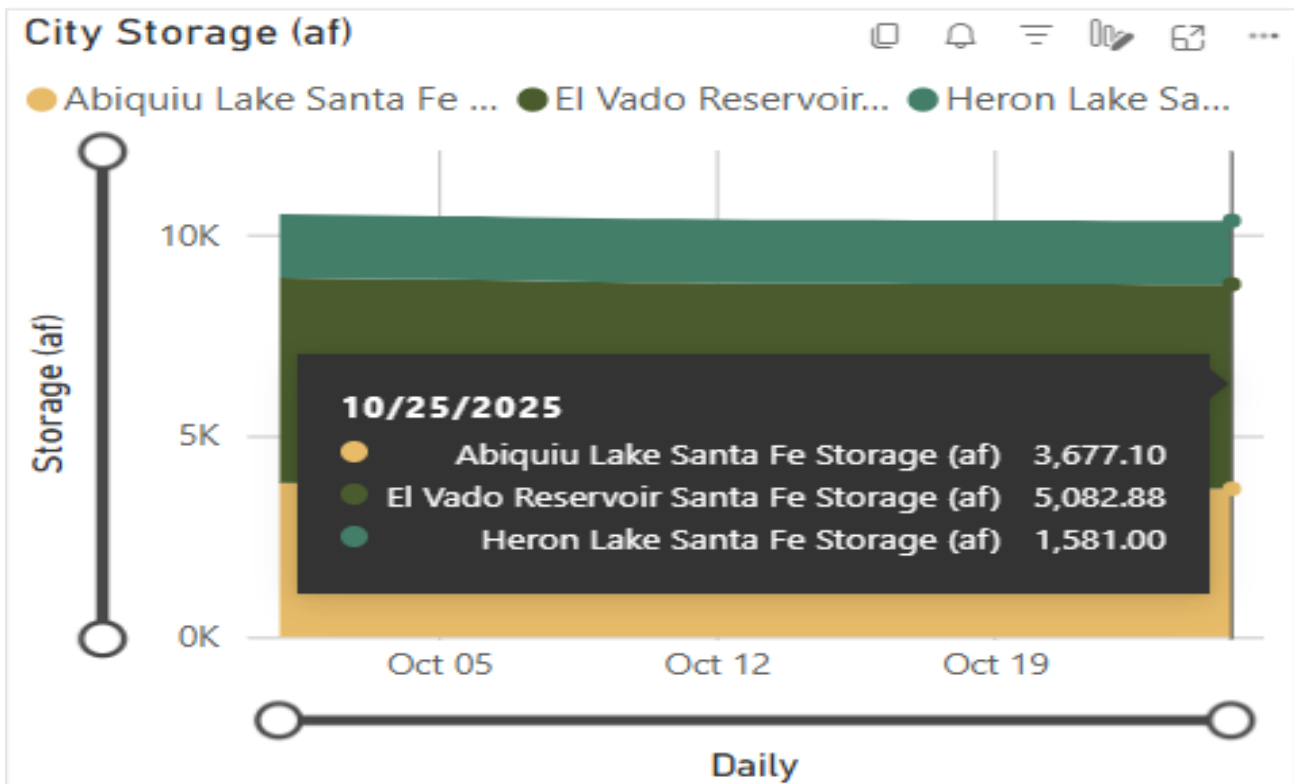


## Regional Water Overview

Daily metered regional water demand for the month averaged approximately: 8.5 MGD

Rio Grande flows averaged approximately: 698 CFS (cubic feet per second)

City/County/Las Campanas Storage- as updated by partners. As of Octobr 25, 2025 City of SF Abiquiu SJC storage is at about 3677.10 AF.



## Regional Water Supply

CRWTP reservoir storage: Nichols: 65.02% McClure: 48.20% Watershed Inflow: 3.73 MGD

- Santa Fe SNOTEL
  - Cumulative snow Water/Equip. Inches 0
  - Cumulative Snow in Depth in Inches 0



## **Current Rio Grande Watershed Snowpack Storage Data:**

The Current Upper Rio Grande Basin Index is 0% of the historic median value for Snow Water Equivalent (SWE) given that snowpack has completely ablated and 331% of the historic median value for precipitation meaning that rainfall in this basin has seen a dramatic increase. These flood driven flows may introduce turbidity issues for the BDD but may also increase the ability of the BDD to divert. The increased flow from recent rain events has sustained, but diminished from its peak.

Source: <https://wcc.sc.egov.usda.gov/>

## **Current El Niño Southern Oscillation (ENSO) Status Summary**

**Current ENSO Status (as of October 27, 2025):** La Niña conditions are present with weak intensity. The latest weekly Niño 3.4 index value is  $-0.5^{\circ}\text{C}$ , indicating below-average sea surface temperatures across the central and eastern equatorial Pacific Ocean. Atmospheric patterns support this, including easterly low-level winds, westerly upper-level winds over the western and east-central Pacific, enhanced convection over Indonesia, suppressed convection near the Date Line, and a positive Southern Oscillation Index.

**Forecast Outlook:** La Niña is favored to continue through the Northern Hemisphere winter (December 2025–February 2026), with a ~70–80% probability in the next few months. A transition to ENSO-neutral conditions is likely by January–March 2026 (55% chance), though models suggest a weak event overall, potentially influencing seasonal weather but with milder impacts than stronger La Niña episodes.

Source: [cpc.ncep.noaa.gov](https://cpc.ncep.noaa.gov)

## **Seasonal Precipitation and Temperature Outlooks:**

The current precipitation outlook is leaning below normal for the region while the current temperature outlook is above normal for the region. Maps of this forecast are pictured below.

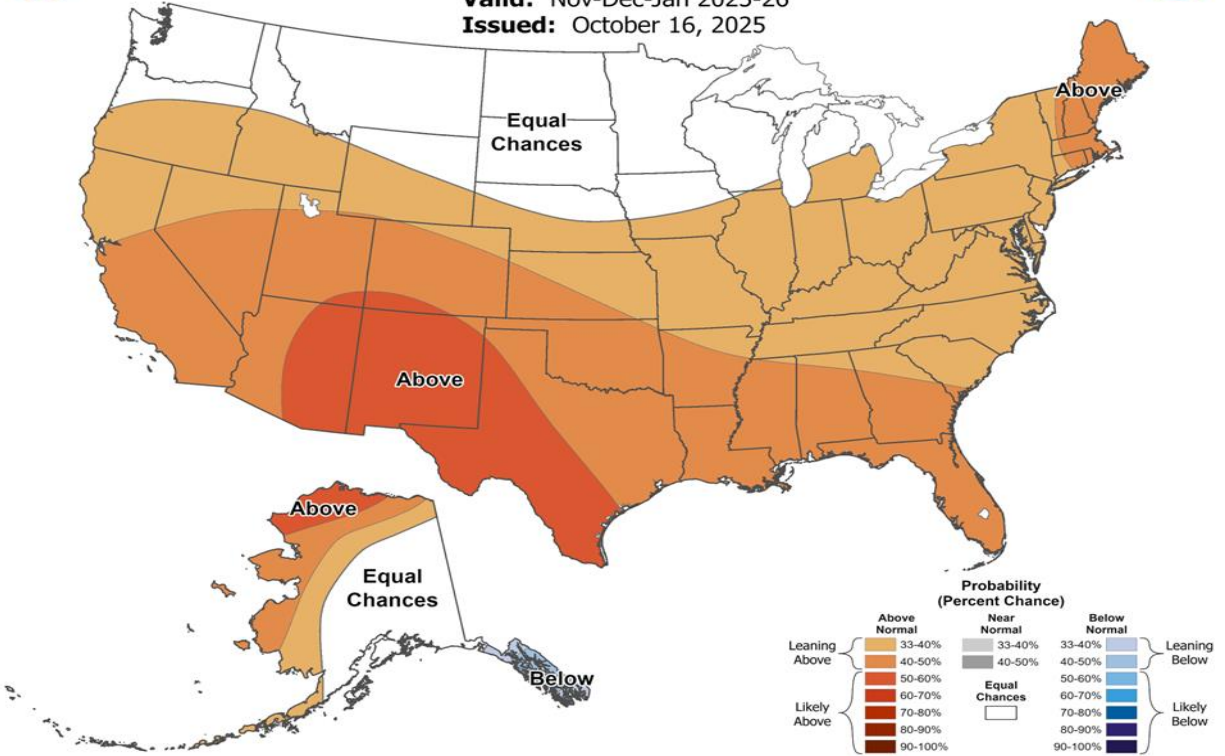
Source: [https://www.cpc.ncep.noaa.gov/products/predictions/long\\_range/seasonal.php?lead=1](https://www.cpc.ncep.noaa.gov/products/predictions/long_range/seasonal.php?lead=1)



# Seasonal Temperature Outlook



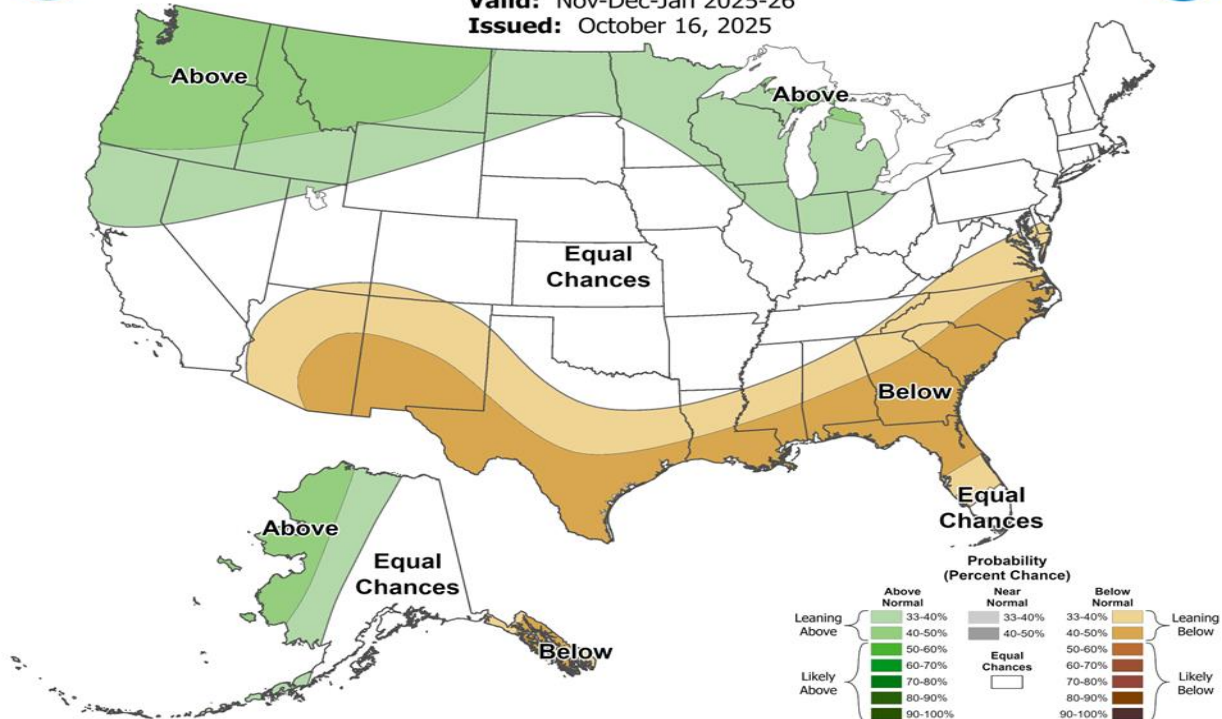
Valid: Nov-Dec-Jan 2025-26  
Issued: October 16, 2025



# Seasonal Precipitation Outlook



Valid: Nov-Dec-Jan 2025-26  
Issued: October 16, 2025





### Buckman Direct Diversion Monthly Native and SJC Diversions (ac-ft)

	Total Diverted		County Native Rio Grande Diversions					TCLC Native Rio Grande Diversion				San Juan-Chama Diversions			
	Total Diverted	Total Native Diverted	Total County Native Diverted	County Native SP-4842	County Native SP-4842-A	County Native RG-20516 et al. -C into SP-4842	County Native RG-20516 et al. -A & -B into SP-4842-A	Total TCLC Native Diverted	TCLC Native SP-4842-A	TCLC Native RG-20516 et al. -A & -B into SP-4842-A	Total SJC Diverted	City SJC SP-2847-E Diverted	County SJC SP-2847-E Diverted	TCLC SJC SP-2847-N-A Diverted	
2025 Jan	326.141	123.689	123.689	123.689	0.000	0.000	0.000	0.000	0.000	0.000	202.453	202.453	0.000	0.000	
Feb	313.427	28.205	28.205	28.205	0.000	0.000	0.000	0.000	0.000	0.000	285.223	285.223	0.000	0.000	
Mar	563.860	257.038	257.038	257.038	0.000	0.000	0.000	0.000	0.000	0.000	306.823	306.823	0.000	0.000	
Apr	677.035	471.649	471.649	471.649	0.000	0.000	0.000	0.000	0.000	0.000	205.388	205.388	0.000	0.000	
May	918.542	292.560	292.560	292.560	0.000	0.000	0.000	0.000	0.000	0.000	625.983	625.983	0.000	0.000	
Jun	754.206	62.214	62.214	62.214	0.000	0.000	0.000	0.000	0.000	0.000	691.993	691.993	0.000	0.000	
Jul	748.447	35.193	35.193	35.193	0.000	0.000	0.000	0.000	0.000	0.000	713.256	713.256	0.000	0.000	
Aug	446.168	0.000	0.000	0.000	0.000	0.000	0.000	0.000	0.000	0.000	446.169	446.169	0.000	0.000	
Sep	418.331	65.790	65.790	21.482	0.000	44.308	0.000	0.000	0.000	0.000	352.542	352.542	0.000	0.000	
Oct	304.622	148.107	148.107	0.000	0.000	148.107	0.000	0.000	0.000	0.000	156.516	156.516	0.000	0.000	
<b>Total</b>	<b>5,470.779</b>	<b>1,484.445</b>	<b>1,484.445</b>	<b>1,292.030</b>	<b>0.000</b>	<b>192.415</b>	<b>0.000</b>	<b>0.000</b>	<b>0.000</b>	<b>0.000</b>	<b>3,986.345</b>	<b>3,986.345</b>	<b>0.000</b>	<b>0.000</b>	
<b>Max Allowable</b>		<b>2,373.868</b>	<b>2,157.734</b>	<b>1,292.030</b>	<b>0.000</b>	<b>372.384</b>	<b>493.320</b>	<b>216.134</b>	<b>69.804</b>	<b>146.330</b>	<b>6,774.500</b>	<b>6,407.000</b>	<b>367.500</b>	<b>0.000</b>	
<b>Remaining</b>		<b>889.423</b>	<b>673.289</b>			<b>179.969</b>	<b>493.320</b>	<b>216.134</b>	<b>69.804</b>	<b>146.330</b>	<b>2,788.155</b>	<b>2,420.655</b>	<b>367.500</b>	<b>0.000</b>	

### Projected Diversions (ac-ft)

	Total Diverted		County Native Rio Grande Diversions					TCLC Native Rio Grande Diversion				San Juan-Chama Diversions			
	Total Diverted	Total Native Diverted	Total County Native Diverted	County Native SP-4842	County Native SP-4842-A	County Native RG-20516 et al. -C into SP-4842	County Native RG-20516 et al. -A & -B into SP-4842-A	Total TCLC Native Diverted	TCLC Native SP-4842-A	TCLC Native RG-20516 et al. -A & -B into SP-4842-A	Total SJC Diverted	City SJC SP-2847-E Diverted	County SJC SP-2847-E Diverted	TCLC SJC SP-2847-N-A Diverted	
2025 Nov	325	325	325	0	0	180	145	0	0	0	0	0	0	0	
Dec	325	325	325	0	0	0	325	0	0	0	0	0	0	0	
<b>Total Projected</b>	<b>650</b>	<b>650</b>	<b>650</b>	<b>0</b>	<b>0</b>	<b>180</b>	<b>470</b>	<b>0</b>	<b>0</b>	<b>0</b>	<b>0</b>	<b>0</b>	<b>0</b>	<b>0</b>	

### SJC in Storage as of Saturday, November 1, 2025 (ac-ft)

City SJC in Storage	County SJC in Storage	TCLC SJC in Storage
10,327	979	1,133



Buckman Direct Diversion Monthly SJC and Native Diversions								
Dec-24		In Acre-Feet						
Month	Total SJC + Native Rights	SP-4842 RG Native COUNTY	SD-04842-A RG Native VIA SFC LAS CAMPANAS	SJC Call Total	SP-2847-E SJC Call CITY	SP-2847-N-A SJC Call LAS CAMPANAS	SP-2847-E SJC Undiverted CITY	All Partners Conveyance Losses
JAN	283.691	91.173	0.000	192.518	192.518	0.000	0.000	1.986
FEB	293.064	112.967	0.000	180.097	180.097	0.000	0.000	1.858
MAR	217.014	95.914	0.000	121.100	121.100	0.000	0.000	1.475
APR	396.998	255.245	67.230	74.523	74.523	0.000	0.000	1.004
MAY	750.899	395.038	123.438	232.423	232.423	0.000	0.000	1.347
JUN	642.136	371.118	7.114	263.905	263.905	0.000	0.000	1.743
JUL	652.169	320.362	74.513	257.295	257.295	0.000	0.000	1.166
AUG	647.277	0.000	0.000	659.885	659.885	0.000	12.608	3.210
SEP	666.797	0.000	0.000	776.587	776.587	0.000	109.791	3.604
OCT	612.559	0.000	0.000	631.170	631.170	0.000	18.612	5.811
NOV	385.574	154.074	0.000	231.501	231.501	0.000	0.000	1.755
DEC	353.083	214.183	0.000	138.900	138.900	0.000	0.000	1.053
<b>TOTAL</b>	<b>5,901.261</b>	<b>2,010.073</b>	<b>272.294</b>	<b>3,759.904</b>	<b>3,759.904</b>	<b>0.000</b>	<b>141.010</b>	<b>26.014</b>
In Million Gallons								
Month	Native COUNTY	SFC Native Las Campanas	SJC TOTAL	SJC CITY	SJC Las Campanas	SJC Undiverted CITY	All Partners Diversions	
JAN	29.698	0.000	61.974	61.974	0.000	0.000	91.672	
FEB	36.797	0.000	57.976	57.976	0.000	0.000	94.773	
MAR	31.242	0.000	38.910	38.910	0.000	0.000	70.153	
APR	83.142	21.899	23.913	23.913	0.000	0.000	128.954	
MAY	128.677	40.208	74.921	74.921	0.000	0.000	243.805	
JUN	120.885	2.317	84.961	84.961	0.000	0.000	208.164	
JUL	104.352	24.271	82.879	82.879	0.000	0.000	211.503	
AUG	0.000	0.000	208.462	208.462	0.000	4.107	208.462	
SEP	0.000	0.000	214.522	214.522	0.000	35.762	214.522	
OCT	0.000	0.000	197.347	197.347	0.000	6.062	197.347	
NOV	50.187	0.000	74.729	74.729	0.000	0.000	124.916	
DEC	69.766	0.000	44.837	44.837	0.000	0.000	114.604	
<b>TOTAL</b>	<b>654.747</b>	<b>88.695</b>	<b>1,165.432</b>	<b>1,165.432</b>	<b>0.000</b>	<b>45.932</b>	<b>1,908.874</b>	