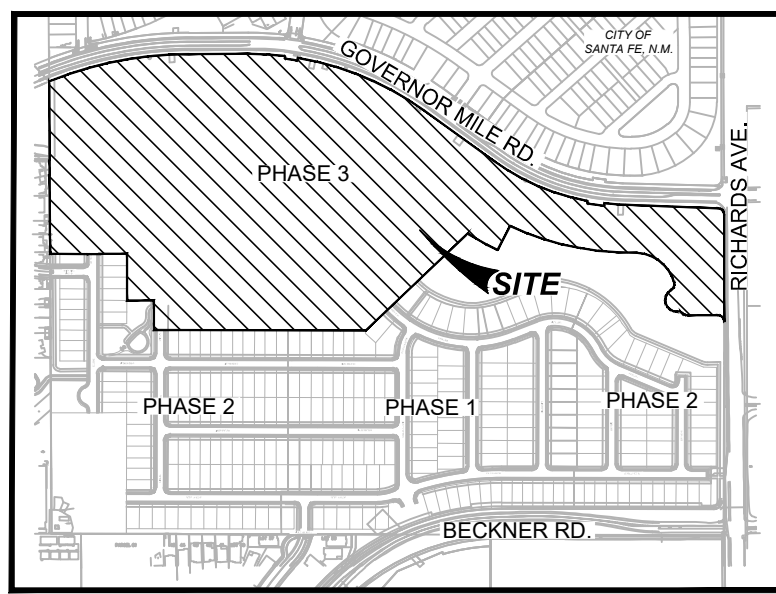


DHI ENGINEERING, LLC



LOCATION MAP
NOT-TO-SCALE

- GENERAL NOTES:**
- DO NOT DISTURB VEGETATED AREAS (TREES, GRASS, WEEDS, BRUSH, ETC.) ANY MORE THAN NECESSARY FOR CONSTRUCTION.
 - CONSTRUCTION ENTRANCE/EXIT LOCATION, CONCRETE WASH-OUT PIT, AND CONSTRUCTION EQUIPMENT AND MATERIAL STORAGE YARD TO BE DETERMINED IN THE FIELD.
 - STORM WATER POLLUTION PREVENTION CONTROLS MAY NEED TO BE MODIFIED IN THE FIELD TO ACCOMPLISH THE DESIRED EFFECT. ALL MODIFICATIONS ARE TO BE NOTED ON THIS EXHIBIT AND SIGNED AND DATED BY THE RESPONSIBLE PARTY.
 - RESTRICT ENTRY/EXIT TO PROJECT SITE TO DESIGNATED LOCATIONS BY USE OF ADEQUATE FENCING IF NECESSARY. NO CONSTRUCTION TRAFFIC WILL BE ALLOWED WITHIN NAVA ADE SUBDIVISION.
 - ALL STORM WATER POLLUTION PREVENTION CONTROLS ARE TO BE MAINTAINED AND IN WORKING CONDITIONS AT ALL TIMES.
 - FOR A COMPLETE LISTING OF TEMPORARY STORM WATER POLLUTION PREVENTION CONTROLS REFER TO THE NPDES STORM WATER POLLUTION PREVENTION PLAN.
 - STORM WATER POLLUTION PREVENTION STRUCTURES SHOULD BE CONSTRUCTED WITHIN THE SITE BOUNDARIES. SOME OF THESE FEATURES MAY BE SHOWN OUTSIDE THE SITE BOUNDARIES ON THIS PLAN FOR VISUAL CLARITY.
 - AS SOON AS POSSIBLE, ALL DISTURBED SOIL THAT WILL NOT BE COVERED BY IMPERVIOUS COVER SUCH AS PARKWAY AREAS, EASEMENTS AREAS, EMBANKMENT SLOPES, ETC. WILL BE STABILIZED PER APPLICABLE PROJECT SPECIFICATIONS.
 - BEST MANAGEMENT PRACTICES MAY BE INSTALLED IN STAGES TO COINCIDE WITH THE DISTURBANCE OF UNGRADED AREAS.
 - BEST MANAGEMENT PRACTICES MAY BE REMOVED IN STAGES ONCE THE WATERSHED FOR THAT PORTION CONTROLLED BY THE BEST MANAGEMENT PRACTICE HAS BEEN STABILIZED IN ACCORDANCE WITH NPDES REQUIREMENTS.

- UPON COMPLETION OF THE PROJECT, INCLUDING SITE STABILIZATION, AND BEFORE FINAL PAYMENT IS ISSUED, CONTRACTOR SHALL REMOVE ALL SEDIMENT AND EROSION CONTROL MEASURES, PAYING SPECIAL ATTENTION TO ROCK BERMS IN DRAINAGE FEATURES.
- WHERE VEGETATED FILTER STRIPS ARE INDICATED, CONTRACTOR SHALL VERIFY THAT SUFFICIENT VEGETATION EXISTS. OTHERWISE CONTRACTOR SHALL PLACE SILT FENCING IN LIEU OF VEGETATED FILTER STRIP.
- SHADED AREA DENOTING LIMITS OF DISTURBED AREAS. OTHER AREAS WITHIN THE PROJECT LIMITS, WITH THE EXPECTATION OF A CONSTRUCTION EQUIPMENT AND MATERIALS STORAGE YARD, ARE NOT A PART OF THIS NPDES STORM WATER POLLUTION PREVENTION PLAN (SW3P) AND WILL NOT BE DISTURBED BY CIVIL CONSTRUCTION ACTIVITIES/ HOUSE CONSTRUCTION ACTIVITIES WILL REQUIRE A SEPARATE STORM WATER POLLUTION PREVENTION PLAN.
- PRIOR TO BEGINNING CONSTRUCTION, CONTRACTOR SHALL COORDINATE PLACEMENT OF TEMPORARY BEST MANAGEMENT PRACTICES WITHIN NMDOT RIGHT-OF-WAY WITH NMDOT.
- PROVIDE AT LEAST TWO WATER TRUCKS ON SITE FOR DUST CONTROL WHENEVER GRADING, MOVING, DISTURBING DIRT, OR ANY OTHER CONSTRUCTION ACTIVITY THAT COULD CREATE DUST.
- TACKIFIER SHALL BE USED ON ALL GRADED (OR CLEARED/GRUBBED) AREAS WHERE CONSTRUCTION ACTIVITIES WILL NOT OCCUR WITHIN 30 DAYS.
- THE ENGINEERING SEAL HAS BEEN AFFIXED TO THIS SHEET ONLY FOR THE PURPOSE OF DEMONSTRATING COMPLIANCE WITH THE NPDES-STORM WATER POLLUTION PREVENTION PLAN (SW3P) REGULATIONS.
- THIS SHEET HAS BEEN PREPARED FOR PURPOSES OF THE SW3P ONLY. ALL OTHER CIVIL ENGINEERING RELATED INFORMATION SHOULD BE ACQUIRED FROM THE APPROPRIATE SHEET IN THE CIVIL IMPROVEMENTS PLANS.
- CONTRACTOR TO PROVIDE CITY A PLAN FOR STAGING AND PARKING AREAS PRIOR TO STARTING CONSTRUCTION. PROVIDE BASE COURSE OR OTHER STABILIZER FOR STAGING AND PARKING AREAS.

DUST CONTROL NOTES

ALL ON-SITE SOIL DISTURBING CONSTRUCTION ACTIVITIES SHALL BE ADDRESSED AND PROVIDE MEASURES TO MITIGATE OR CONTROL DUST FROM BEING TRANSPORTED OFFSITE AND POLLUTING NEIGHBORING PROPERTIES.

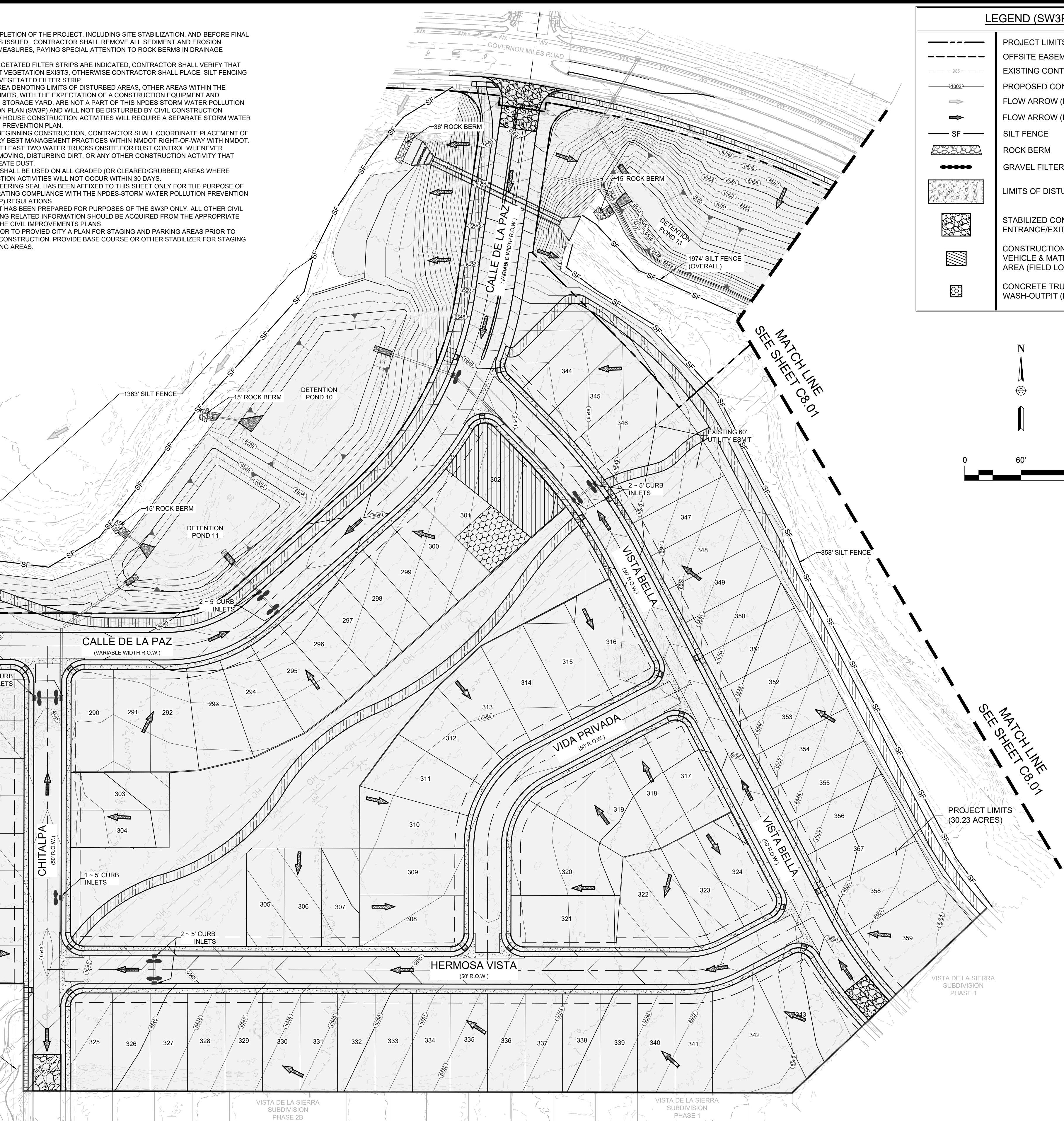
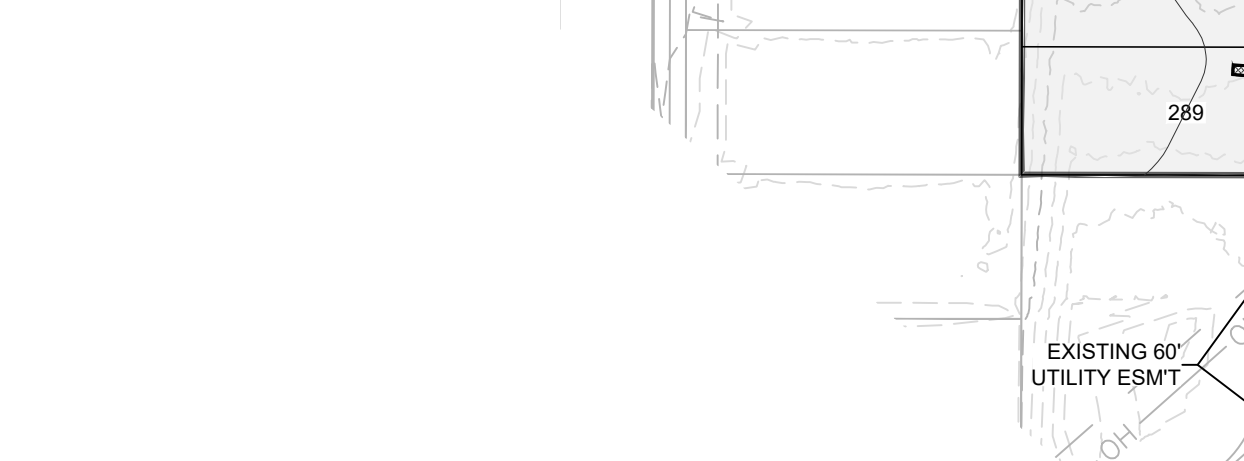
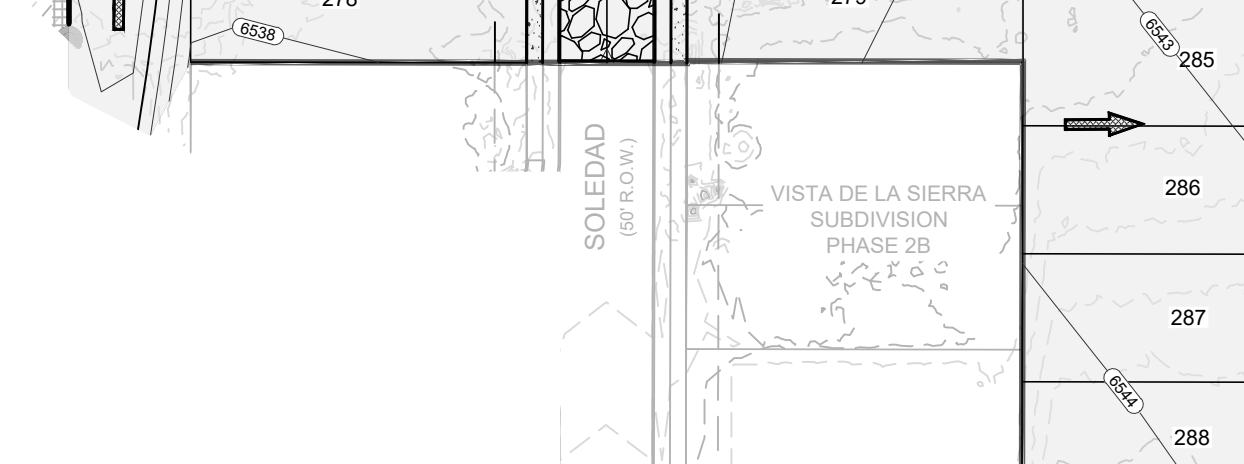
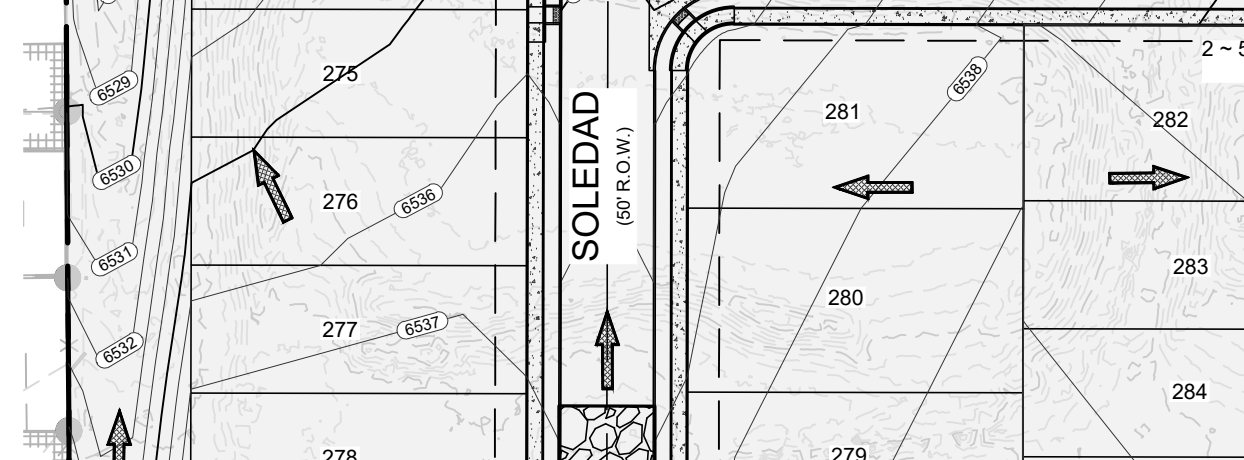
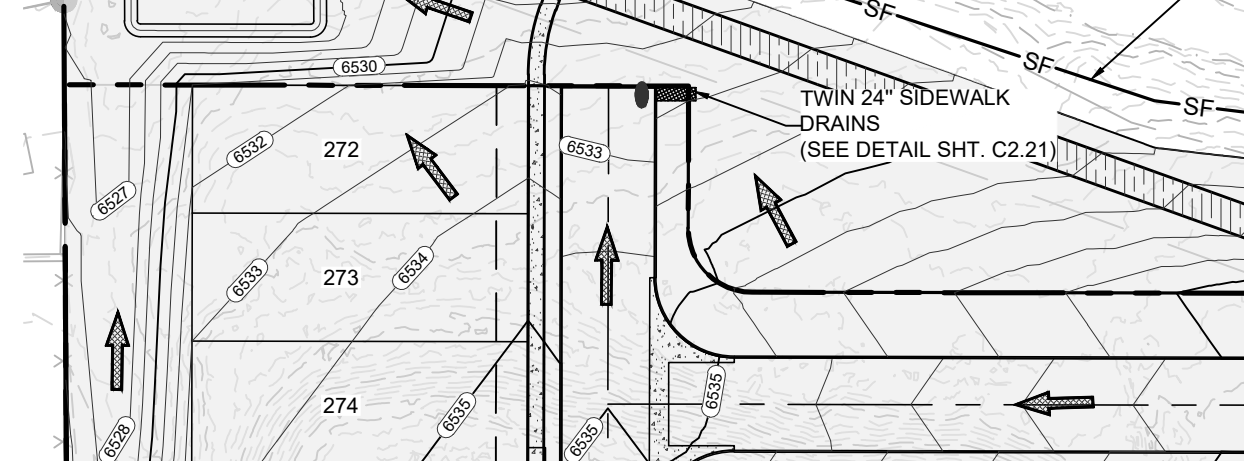
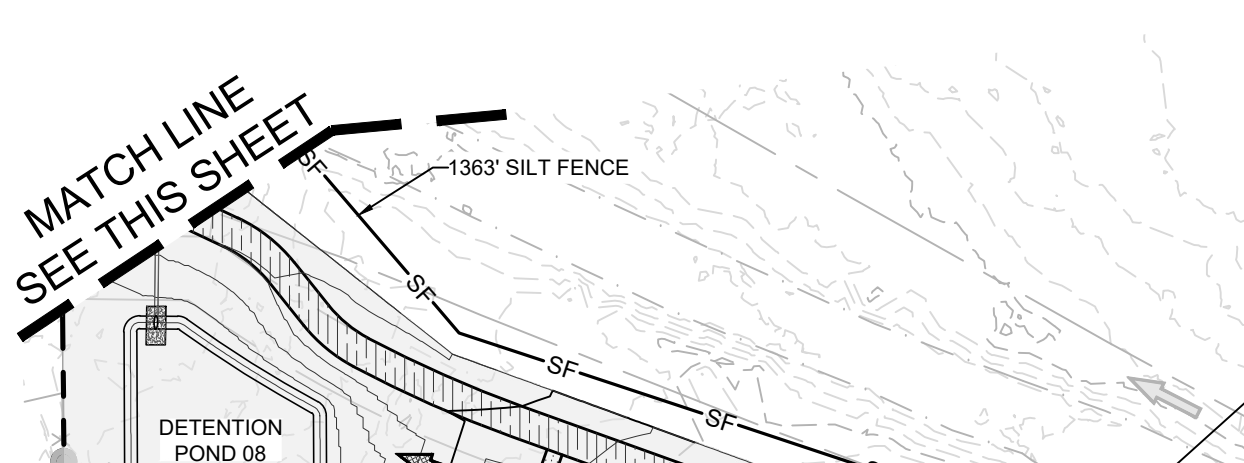
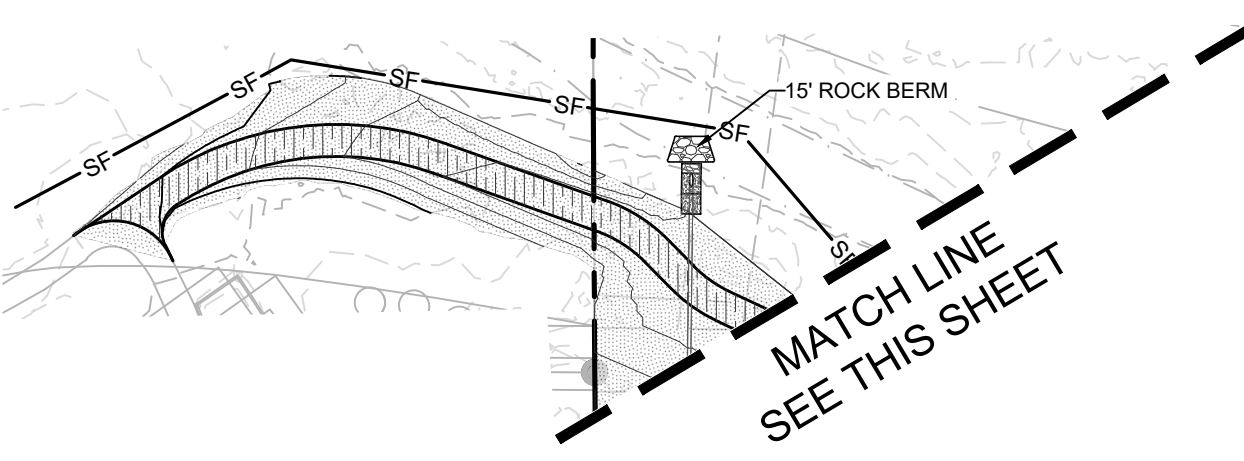
ANY PERSON, OWNER, CONTRACTOR OR OPERATOR WHO CONDUCTS EARTHMOVING AND/OR DUST GENERATING ACTIVITIES IS RESPONSIBLE FOR IMPLEMENTING BEST MANAGEMENT PRACTICES (BMPs) IN ORDER TO MITIGATE OFF-PROPERTY TRANSPORT OF FUGITIVE DUST EMISSIONS.

A PLAN, OR STORM WATER PREVENTION PLAN (SWPPP) WHEN APPLICABLE, LISTING THE BEST MANAGEMENT PRACTICES (BMPs), OR AS OUTLINED ON THE, SHALL BE PROVIDED TO THE CITY ENGINEER, OR HIS DESIGNEE FOR REVIEW AND APPROVAL. THE APPROVED BMPs SHALL BE APPLIED TO THE GRADED AND/OR DISTURBED SOIL IN ORDER TO STABILIZE THE SITE.

THE INITIAL BMP SHALL ADDRESS HOW THE CONTRACTOR WILL MINIMIZE THE AMOUNT OF DISTURBED SOIL, AND HOW THE CONTRACTOR WILL STABILIZE THE DISTURBED SURFACE AREA EXPOSED TO WIND OR VEHICLE TRAFFIC DURING CONSTRUCTION.

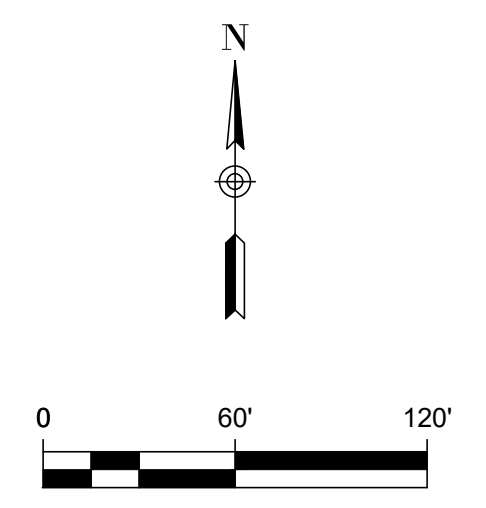
SOME BMPs SHALL INCLUDE:

- THE REDUCTION OF VEHICLE SPEEDS: ESTABLISH A MAXIMUM SPEED LIMIT OR INSTALL TRAFFIC CALMING DEVICES TO REDUCE SPEEDS TO A RATE TO MITIGATE OFF-PROPERTY TRANSPORT OF DUST ENTRAINMENT BY VEHICLES.
 - THE MINIMIZATION OF DROP HEIGHT: DRIVERS AND OPERATORS SHALL UNLOAD TRUCK BEDS AND LOADER OR EXCAVATOR BUCKETS SLOWLY, AND MINIMIZE DROP HEIGHT OF MATERIALS TO THE LOWEST HEIGHT POSSIBLE, INCLUDING SCREENING OPERATIONS.
 - HIGH WINDS RESTRICTION: TEMPORARILY HALT WORK ACTIVITIES DURING HIGH WIND EVENTS GREATER THAN 30 MPH IF OPERATIONS WOULD RESULT IN OFF-PROPERTY TRANSPORT.
 - RESTRICT ACCESS: RESTRICT ACCESS TO THE WORK AREA TO ONLY AUTHORIZED VEHICLES AND PERSONNEL.
- IN THE EVENT THE ABOVE PRACTICES ARE INEFFECTIVE TO PREVENT OFF PROPERTY TRANSPORT, THE PERSON, OWNER, OR OPERATOR SHALL USE AT ONE OR MORE OF THE FOLLOWING BEST MANAGEMENT PRACTICES (BMPs):
- WET SUPPRESSION: APPLY WATER TO DISTURBED SOIL SURFACES, BACKFILL MATERIALS, SCREENINGS, AND OTHER DUST GENERATING OPERATIONS AS NECESSARY AND APPROPRIATE CONSIDERING CURRENT WEATHER CONDITIONS, AND PREVENT WATER USED FOR DUST CONTROL FROM ENTERING ANY PUBLIC RIGHT-OF-WAY, STORM WATER DRAINAGE FACILITY, OR WATERCOURSE.
 - WIND BARRIER: CONSTRUCT A FENCE OR OTHER TYPE OF WIND BARRIER TO PREVENT WIND EROSION OF THE GRADED OR DISTURBED SURFACE.
 - VEGETATION: PLANT VEGETATION APPROPRIATE FOR RETAINING SOILS OR CREATING A WIND BREAK.
 - SURFACE ROUGHENING: STABILIZE AN ACTIVE CONSTRUCTION AREA DURING PERIODS OF INACTIVITY OR WHEN VEGETATION CANNOT BE IMMEDIATELY ESTABLISHED.
 - COVER: INSTALL COVER MATERIALS SUCH AS TACKIFIERS, EROSION CONTROL BLANKETS, GRAVEL, VEGETATION (WHEN APPROPRIATE), COLD-MILLINGS, ETC. DURING PERIODS OF INACTIVITY AND PROPERLY ANCHOR THE COVER.
 - SOIL RETENTION: STABILIZE DISTURBED OR EXPOSED SOIL SURFACE AREAS THAT WILL BE INACTIVE FOR MORE THAN 30 DAYS OR WHILE VEGETATION IS BEING ESTABLISHED.



LEGEND (SW3P)

- PROJECT LIMITS
- OFFSITE EASEMENTS
- EXISTING CONTOUR
- PROPOSED CONTOUR
- FLOW ARROW (EXISTING)
- FLOW ARROW (PROPOSED)
- SILT FENCE
- ROCK BERM
- GRAVEL FILTER BAGS
- LIMITS OF DISTURBED AREA
- STABILIZED CONSTRUCTION ENTRANCE/EXIT (FIELD LOCATE)
- CONSTRUCTION EQUIPMENT, VEHICLE & MATERIALS STORAGE AREA (FIELD LOCATE)
- CONCRETE TRUCK WASH-OUTPIT (FIELD LOCATE)



DESCRIPTION

DATE

REV

6/10/2025

VANCE L WEYLAND
NEW MEXICO
29907
PROFESSIONAL ENGINEER

Vance Weyland

DHI Engineering, LLC.
5419 ANTELOPE EAST
SANTA FE, NM 87507
(505) 426-2988 | dhiengineering.com
TBP REG. NO. F-195661

DHI

VISTAS DE LA SIERRA SUBDIVISION - PHASE 3
SANTA FE, NM

STORM WATER POLLUTION PREVENTION PLAN

SW3P MODIFICATIONS		
DATE	SIGNATURE	DESCRIPTION

SEQUENCE OF MAJOR ACTIVITIES:

- INSTALL STABILIZED CONSTRUCTION ENTRANCE, SILT FENCE AND SEDIMENT PONDS.
- CONTACT CITY OF SANTA FE FOR INSPECTION.
- ALL CONSTRUCTION TRAFFIC TO UTILIZE CONSTRUCTION ENTRANCE ONLY.
- CONTINUE ROUGH GRADING AND EARTHWORK.
- INSTALL SEWER.
- INSTALL STORM DRAIN.

TRENCH EXCAVATION PROTECTION

- CONTRACTOR AND CONTRACTOR'S INDEPENDENTLY RETAINED EMPLOYEE OR STRUCTURAL DESIGN, GEOTECHNICAL, SAFETY, EQUIPMENT CONSULTANT, IF ANY, SHALL REVIEW THESE PLANS AND ANY AVAILABLE GEOTECHNICAL INFORMATION AND THE ANTICIPATED INSTALLATION SITE WITHIN THE PROJECT'S WORK AREA, IN ORDER TO IMPLEMENT CONTRACTOR'S TRENCH EXCAVATION SAFETY PROTECTION SYSTEM. PROGRAMS AND/OR PROCEDURES FOR THE PROJECT DESCRIBED IN THE CONTRACT DOCUMENTS. THE CONTRACTOR'S IMPLEMENTATION OF THESE SYSTEMS, PROGRAMS, AND PROCEDURES SHALL PROVIDE FOR ADEQUATE TRENCH EXCAVATION SAFETY PROTECTION THAT COMPLY WITH AS A MINIMUM, OSHA STANDARDS FOR TRENCH EXCAVATIONS SPECIFICALLY. CONTRACTOR AND CONTRACTOR'S INDEPENDENTLY RETAINED EMPLOYEE OR SAFETY CONSULTANT SHALL IMPLEMENT A TRENCH SAFETY PROGRAM IN ACCORDANCE WITH OSHA STANDARDS GOVERNING THE PRESENCE AND ACTIVITIES OF INDIVIDUALS WORKING IN AND AROUND TRENCH EXCAVATION.
- INSTALL CURB & GUTTER.
- INSTALL WATER.
- INSTALL DRY UTILITIES.
- INSTALL BASE COURSE & FIRST LIFTED POINT.
- WHEN ALL CONSTRUCTION ACTIVITY IS COMPLETE AND THE SITE IS STABILIZED REMOVE SEDIMENT CONTROL DEVICES INCLUDING SILT FENCE UPON APPROVAL OF CITY PLANNING AND DEVELOPMENT REVIEW STAFF.
- COMPLY WITH REVEGETATION MIX WITH CITY APPROVED MIX DESIGN.
- CONTRACTOR TO INSTALL RAIN GAUGE WITH SWPPP PERMIT BOARD.

CAUTION!!!

CONTRACTOR SHALL BE REQUIRED TO LOCATE ALL PUBLIC OR PRIVATE UTILITIES INCLUDING BUT NOT LIMITING TO: WATER, SEWER, TELEPHONE AND FIBER OPTIC LINES, SITE LIGHTING ELECTRIC, SECONDARY ELECTRIC, PRIMARY ELECTRICAL DUCTBANKS, LANDSCAPE IRRIGATION FACILITIES, AND GAS LINES. ANY UTILITY CONFLICTS THAT ARISE SHOULD BE COMMUNICATED TO THE ENGINEER IMMEDIATELY AND PRIOR TO CONSTRUCTION. THE CONTRACTOR SHALL CONTACT 1-800-DIG-TESS A MINIMUM OF 48 HOURS PRIOR TO THE START OF CONSTRUCTION. ANY DAMAGE TO EXISTING UTILITIES SHALL BE THE SOLE RESPONSIBILITY OF THE CONTRACTOR AND THE REPAIR SHALL BE AT CONTRACTOR'S EXPENSE WHETHER THE UTILITY IS SHOWN ON THESE PLANS OR NOT.

DESIGNED BY: JWS

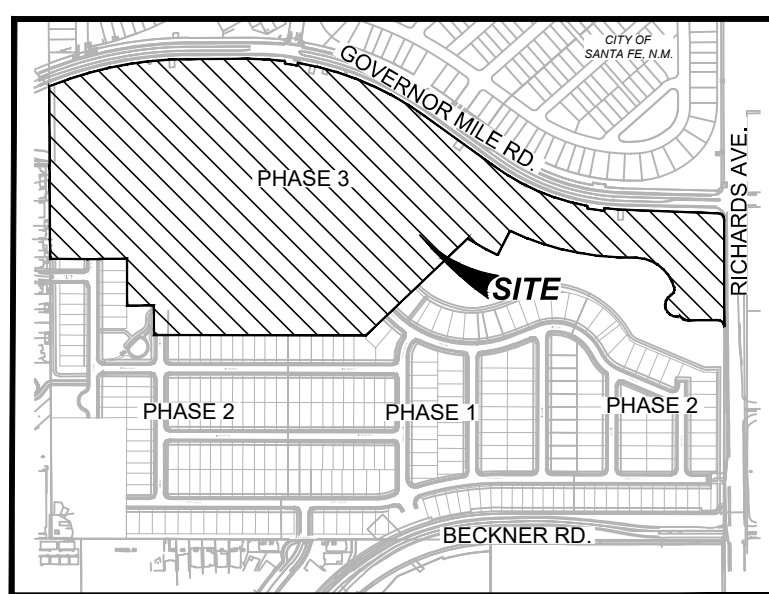
DRAWN BY: JWS

DATE: 6/10/2025

JOB NO.: 05004

SHEET NO.

Date: Jun 10, 2025, 7:30pm User: jws - 050004 - File: E:\PROJECTS\05004 - Vistas de la Sierra - Santa Fe\300 - 050004\300 - Storm Water Pollution Prevention Plan.dwg - Vista de la Sierra Subdivision - CASE PERMIT # S-2020-2642



LOCATION MAP NOT-TO-SCALE

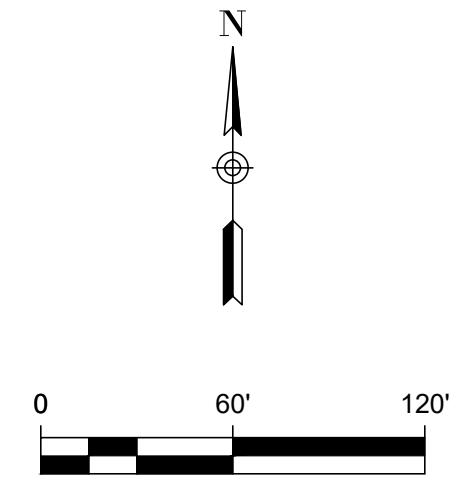
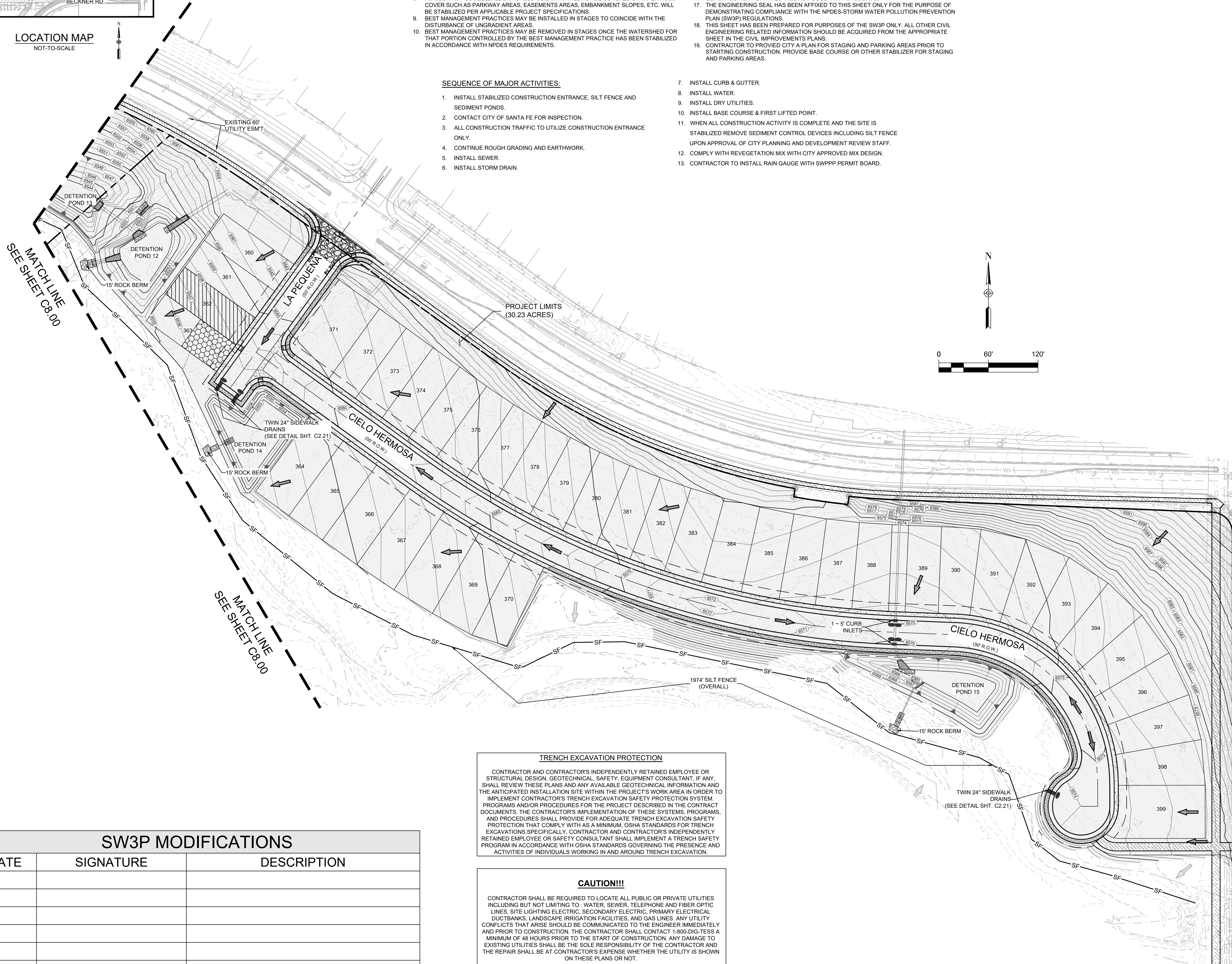
GENERAL NOTES:

- 1. DO NOT DISTURB VEGETATED AREAS (TREES, GRASS, WEEDS, BRUSH, ETC.) ANY MORE THAN NECESSARY FOR CONSTRUCTION.
2. CONSTRUCTION ENTRANCE/EXIT LOCATION, CONCRETE WASH-OUT PIT, AND CONSTRUCTION EQUIPMENT AND MATERIAL STORAGE YARD TO BE DETERMINED IN THE FIELD.
3. STORM WATER POLLUTION PREVENTION CONTROLS MAY NEED TO BE MODIFIED IN THE FIELD TO ACCOMPLISH THE DESIRED EFFECT. ALL MODIFICATIONS ARE TO BE NOTED ON THIS EXHIBIT AND SIGNED AND DATED BY THE RESPONSIBLE PARTY.
4. RESTRICT ENTRY/EXIT TO PROJECT SITE TO DESIGNATED LOCATIONS BY USE OF ADEQUATE FENCING IF NECESSARY. NO CONSTRUCTION TRAFFIC WILL BE ALLOWED WITHIN NAVA ADE SUBDIVISION.
5. ALL STORM WATER POLLUTION PREVENTION CONTROLS ARE TO BE MAINTAINED AND IN WORKING CONDITIONS AT ALL TIMES.
6. FOR A COMPLETE LISTING OF TEMPORARY STORM WATER POLLUTION PREVENTION CONTROLS REFER TO THE NPDES STORM WATER POLLUTION PREVENTION PLAN.
7. STORM WATER POLLUTION PREVENTION STRUCTURES SHOULD BE CONSTRUCTED WITHIN THE SITE BOUNDARIES. SOME OF THESE FEATURES MAY BE SHOWN OUTSIDE THE SITE BOUNDARIES ON THIS PLAN FOR VISUAL CLARITY.
8. AS SOON AS POSSIBLE, ALL DISTURBED SOIL THAT WILL NOT BE COVERED BY IMPERVIOUS COVER SUCH AS PARKWAY AREAS, EASEMENTS AREAS, EMBANKMENT SLOPES, ETC. WILL BE STABILIZED PER APPLICABLE PROJECT SPECIFICATIONS.
9. BEST MANAGEMENT PRACTICES MAY BE INSTALLED IN STAGES TO COINCIDE WITH THE DISTURBANCE OF UNGRADED AREAS.
10. BEST MANAGEMENT PRACTICES MAY BE REMOVED IN STAGES ONCE THE WATERSHED FOR THAT PORTION CONTROLLED BY THE BEST MANAGEMENT PRACTICE HAS BEEN STABILIZED IN ACCORDANCE WITH NPDES REQUIREMENTS.
11. UPON COMPLETION OF THE PROJECT, INCLUDING SITE STABILIZATION, AND BEFORE FINAL PAYMENT IS ISSUED, CONTRACTOR SHALL REMOVE ALL SEDIMENT AND EROSION CONTROL MEASURES, PAYING SPECIAL ATTENTION TO ROCK BERMS IN DRAINAGE FEATURES.
12. WHERE VEGETATED FILTER STRIPS ARE INDICATED, CONTRACTOR SHALL VERIFY THAT SUFFICIENT VEGETATION EXISTS, OTHERWISE CONTRACTOR SHALL PLACE SILT FENCING IN LIEU OF VEGETATED FILTER STRIP.
13. SHADED AREA DENOTING LIMITS OF DISTURBED AREAS. OTHER AREAS WITHIN THE PROJECT LIMITS, WITH THE EXPECTATION OF A CONSTRUCTION EQUIPMENT AND MATERIALS STORAGE YARD, ARE NOT A PART OF THIS NPDES STORM WATER POLLUTION PREVENTION PLAN (SW3P) AND WILL NOT BE DISTURBED BY CIVIL CONSTRUCTION ACTIVITIES; HOUSE CONSTRUCTION ACTIVITIES WILL REQUIRE A SEPARATE STORM WATER POLLUTION PREVENTION PLAN.
14. PRIOR TO BEGINNING CONSTRUCTION, CONTRACTOR SHALL COORDINATE PLACEMENT OF TEMPORARY BEST MANAGEMENT PRACTICES WITHIN NMDOT RIGHT-OF-WAY WITH NMDOT.
15. PROVIDE AT LEAST TWO WATER TRUCKS ON-SITE FOR DUST CONTROL WHENEVER GRADING, MOVING, DISTURBING DIRT, OR ANY OTHER CONSTRUCTION ACTIVITY THAT COULD CREATE DUST.
16. TACKIFIER SHALL BE USED ON ALL GRADED (OR CLEARED/GRUBBED) AREAS WHERE CONSTRUCTION ACTIVITIES WILL NOT OCCUR WITHIN 30 DAYS.
17. THE ENGINEERING SEAL HAS BEEN AFFIXED TO THIS SHEET ONLY FOR THE PURPOSE OF DEMONSTRATING COMPLIANCE WITH THE NPDES-STORM WATER POLLUTION PREVENTION PLAN (SW3P) REGULATIONS.
18. THIS SHEET HAS BEEN PREPARED FOR PURPOSES OF THE SW3P ONLY. ALL OTHER CIVIL ENGINEERING RELATED INFORMATION SHOULD BE ACQUIRED FROM THE APPROPRIATE SHEET IN THE CIVIL IMPROVEMENTS PLANS.
19. CONTRACTOR TO PROVIDE CITY A PLAN FOR STAGING AND PARKING AREAS PRIOR TO STARTING CONSTRUCTION. PROVIDE BASE COURSE OR OTHER STABILIZER FOR STAGING AND PARKING AREAS.
20. INSTALL CURB & GUTTER.
21. INSTALL WATER.
22. INSTALL DRY UTILITIES.
23. INSTALL BASE COURSE & FIRST LIFTED POINT.
24. WHEN ALL CONSTRUCTION ACTIVITY IS COMPLETE AND THE SITE IS STABILIZED REMOVE SEDIMENT CONTROL DEVICES INCLUDING SILT FENCE UPON APPROVAL OF CITY PLANNING AND DEVELOPMENT REVIEW STAFF.
25. COMPLY WITH REVEGETATION MIX WITH CITY APPROVED MIX DESIGN.
26. CONTRACTOR TO INSTALL RAIN GAUGE WITH SWPPP PERMIT BOARD.

SEQUENCE OF MAJOR ACTIVITIES:

- 1. INSTALL STABILIZED CONSTRUCTION ENTRANCE, SILT FENCE AND SEDIMENT PONDS.
2. CONTACT CITY OF SANTA FE FOR INSPECTION.
3. ALL CONSTRUCTION TRAFFIC TO UTILIZE CONSTRUCTION ENTRANCE ONLY.
4. CONTINUE ROUGH GRADING AND EARTHWORK.
5. INSTALL SEWER.
6. INSTALL STORM DRAIN.
7. INSTALL CURB & GUTTER.
8. INSTALL WATER.
9. INSTALL DRY UTILITIES.
10. INSTALL BASE COURSE & FIRST LIFTED POINT.
11. WHEN ALL CONSTRUCTION ACTIVITY IS COMPLETE AND THE SITE IS STABILIZED REMOVE SEDIMENT CONTROL DEVICES INCLUDING SILT FENCE UPON APPROVAL OF CITY PLANNING AND DEVELOPMENT REVIEW STAFF.
12. COMPLY WITH REVEGETATION MIX WITH CITY APPROVED MIX DESIGN.
13. CONTRACTOR TO INSTALL RAIN GAUGE WITH SWPPP PERMIT BOARD.

LEGEND (SW3P) table with symbols for Project Limits, Offsite Easements, Existing Contour, Proposed Contour, Flow Arrow (Existing), Flow Arrow (Proposed), Silt Fence, Rock Berm, Gravel Filter Bags, Limits of Disturbed Area, Stabilized Construction Entrance/Exit (Field Locate), Construction Equipment, Vehicle & Materials Storage Area (Field Locate), Concrete Truck Wash-out Pit (Field Locate).



DUST CONTROL NOTES

ALL ON-SITE SOIL DISTURBING CONSTRUCTION ACTIVITIES SHALL BE ADDRESSED AND PROVIDE MEASURES TO MITIGATE OR CONTROL DUST FROM BEING TRANSPORTED OFFSITE AND POLLUTING NEIGHBORING PROPERTIES. ANY PERSON, OWNER, CONTRACTOR OR OPERATOR WHO CONDUCTS EARTHMOVING AND/OR DUST GENERATING ACTIVITIES IS RESPONSIBLE FOR IMPLEMENTING BEST MANAGEMENT PRACTICES (BMPs) IN ORDER TO MITIGATE OFF-PROPERTY TRANSPORT OF FUGITIVE DUST EMISSIONS.

A PLAN, OR STORM WATER PREVENTION PLAN (SWPPP) WHEN APPLICABLE, LISTING THE BEST MANAGEMENT PRACTICES (BMPs), OR AS OUTLINED ON THE, SHALL BE PROVIDED TO THE CITY ENGINEER, OR HIS DESIGNEE FOR REVIEW AND APPROVAL. THE APPROVED BMPs SHALL BE APPLIED TO THE GRADED AND/OR DISTURBED SOIL IN ORDER TO STABILIZE THE SITE.

THE INITIAL BMP SHALL ADDRESS HOW THE CONTRACTOR WILL MINIMIZE THE AMOUNT OF DISTURBED SOIL, AND HOW THE CONTRACTOR WILL STABILIZE THE DISTURBED SURFACE AREA EXPOSED TO WIND OR VEHICLE TRAFFIC DURING CONSTRUCTION.

SOME BMPs SHALL INCLUDE:

- THE REDUCTION OF VEHICLE SPEEDS: ESTABLISH A MAXIMUM SPEED LIMIT OR INSTALL TRAFFIC CALMING DEVICES TO REDUCE SPEEDS TO A RATE TO MITIGATE OFF-PROPERTY TRANSPORT OF DUST ENTRAINMENT BY VEHICLES.
• THE MINIMIZATION OF DROP HEIGHT: DRIVERS AND OPERATORS SHALL UNLOAD TRUCK BEDS AND LOADER OR EXCAVATOR BUCKETS SLOWLY, AND MINIMIZE DROP HEIGHT OF MATERIALS TO THE LOWEST HEIGHT POSSIBLE, INCLUDING SCREENING OPERATIONS.
• HIGH WINDS RESTRICTION: TEMPORARILY HALT WORK ACTIVITIES DURING HIGH WIND EVENTS GREATER THAN 30 MPH IF OPERATIONS WOULD RESULT IN OFF-PROPERTY TRANSPORT.
• RESTRICT ACCESS: RESTRICT ACCESS TO THE WORK AREA TO ONLY AUTHORIZED VEHICLES AND PERSONNEL.

IN THE EVENT THE ABOVE PRACTICES ARE INEFFECTIVE TO PREVENT OFF PROPERTY TRANSPORT, THE PERSON, OWNER, OR OPERATOR SHALL USE AT ONE OR MORE OF THE FOLLOWING BEST MANAGEMENT PRACTICES (BMPs):

- WET SUPPRESSION: APPLY WATER TO DISTURBED SOIL SURFACES, BACKFILL MATERIALS, SCREENINGS, AND OTHER DUST GENERATING OPERATIONS AS NECESSARY AND APPROPRIATE CONSIDERING CURRENT WEATHER CONDITIONS, AND PREVENT WATER USED FOR DUST CONTROL FROM ENTERING ANY PUBLIC RIGHT-OF-WAY, STORM WATER DRAINAGE FACILITY, OR WATERCOURSE.
• WIND BARRIER: CONSTRUCT A FENCE OR OTHER TYPE OF WIND BARRIER TO PREVENT WIND EROSION OF THE GRADED OR DISTURBED SURFACE.
• VEGETATION: PLANT VEGETATION APPROPRIATE FOR RETAINING SOILS OR CREATING A WIND BREAK.
• SURFACE ROUGHENING: STABILIZE AN ACTIVE CONSTRUCTION AREA DURING PERIODS OF INACTIVITY OR WHEN VEGETATION CANNOT BE IMMEDIATELY ESTABLISHED.
• COVER: INSTALL COVER MATERIALS SUCH AS TACKIFIERS, EROSION CONTROL BLANKETS, GRAVEL VEGETATION (WHEN APPROPRIATE), COLD-MILLINGS, ETC. DURING PERIODS OF INACTIVITY AND PROPERLY ANCHOR THE COVER.
• SOIL RETENTION: STABILIZE DISTURBED OR EXPOSED SOIL SURFACE AREAS THAT WILL BE INACTIVE FOR MORE THAN 30 DAYS OR WHILE VEGETATION IS BEING ESTABLISHED.

TRENCH EXCAVATION PROTECTION

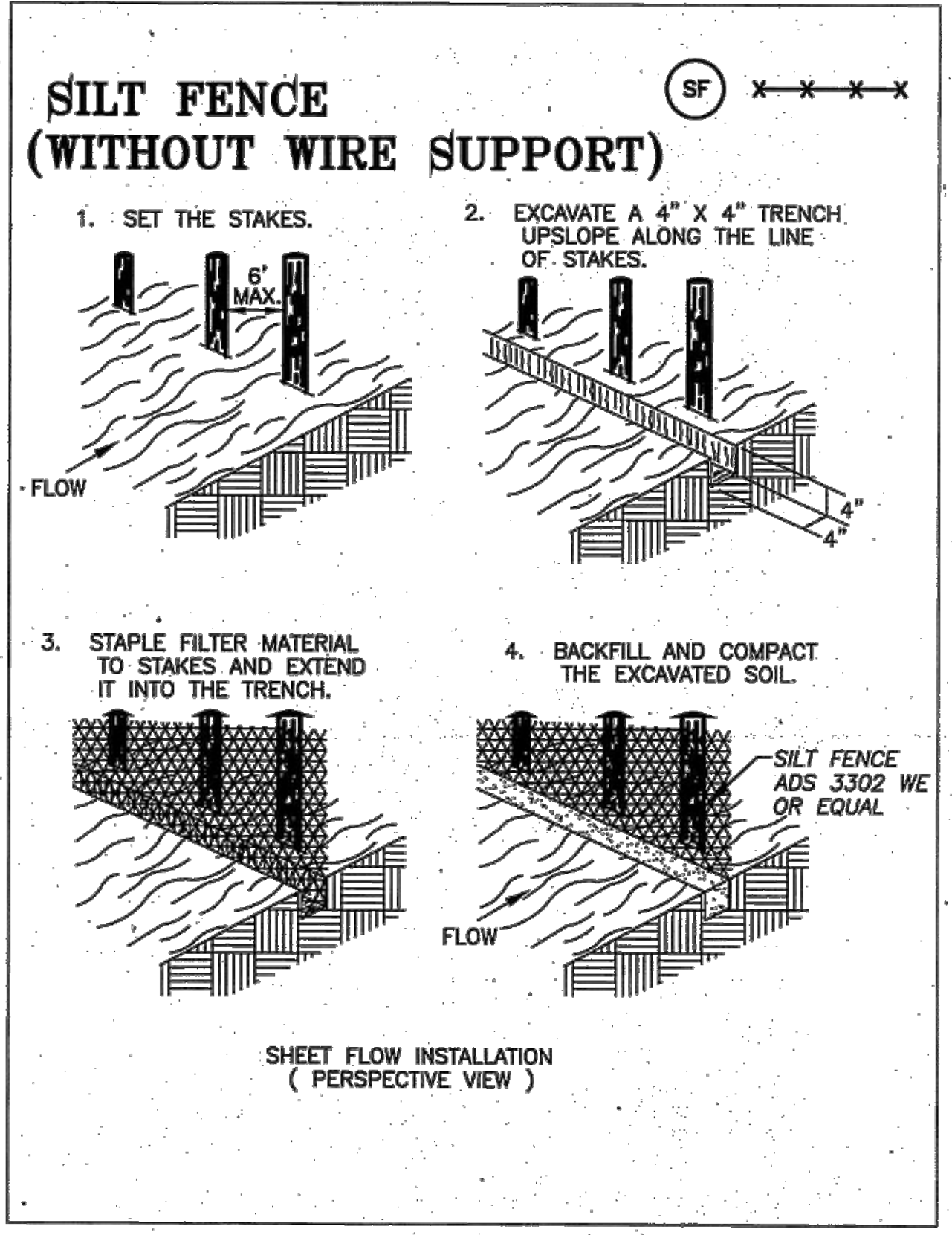
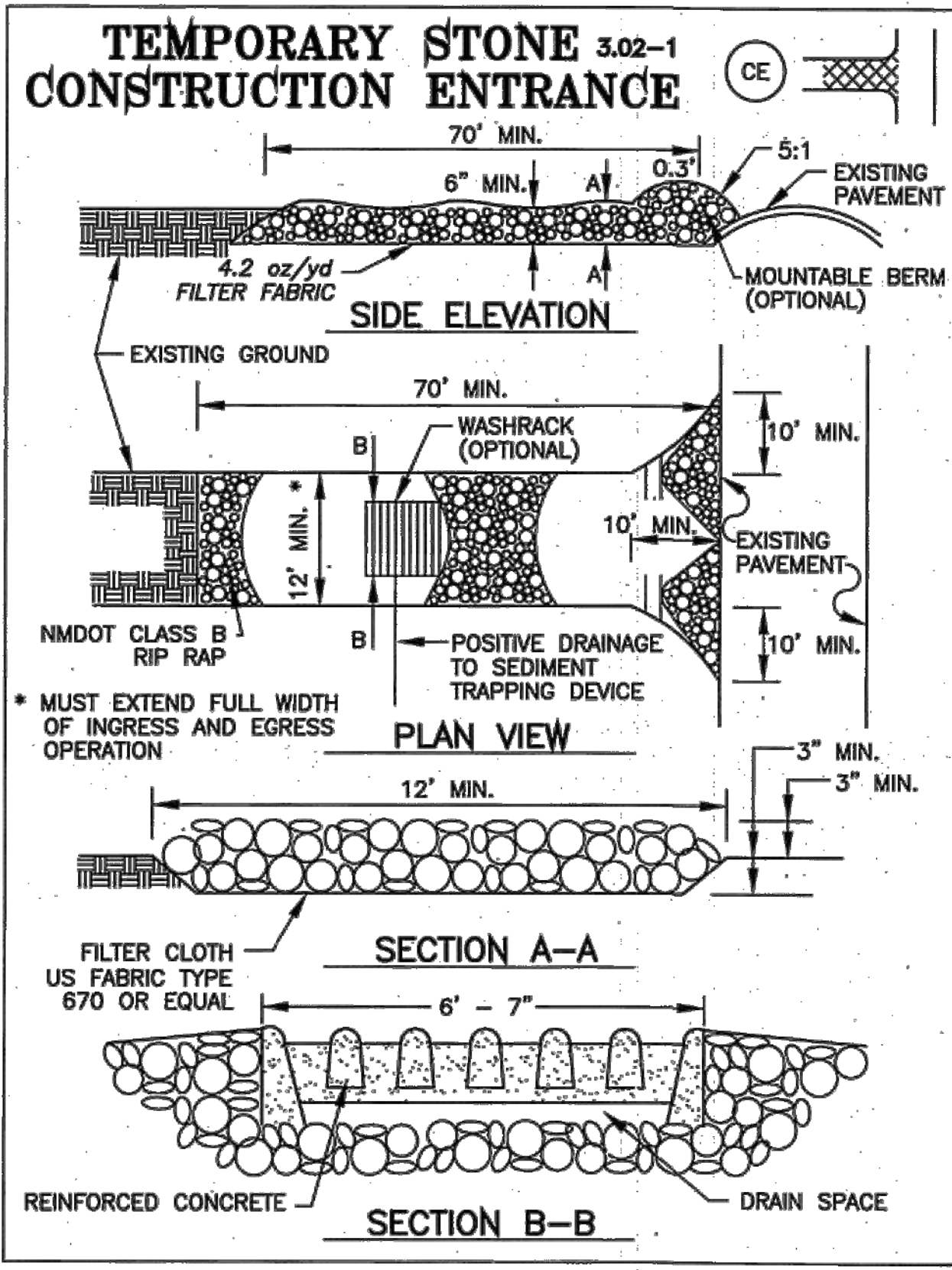
CONTRACTOR AND CONTRACTOR'S INDEPENDENTLY RETAINED EMPLOYEE OR STRUCTURAL DESIGN, GEOTECHNICAL SAFETY, EQUIPMENT CONSULTANT, IF ANY, SHALL REVIEW THESE PLANS AND ANY AVAILABLE GEOTECHNICAL INFORMATION AND THE ANTICIPATED INSTALLATION SITE WITHIN THE PROJECT'S WORK AREA IN ORDER TO IMPLEMENT CONTRACTOR'S TRENCH EXCAVATION SAFETY PROTECTION SYSTEM PROGRAMS AND/OR PROCEDURES FOR THE PROJECT DESCRIBED IN THE CONTRACT DOCUMENTS. THE CONTRACTOR'S IMPLEMENTATION OF THESE SYSTEMS, PROGRAMS, AND PROCEDURES SHALL PROVIDE FOR ADEQUATE TRENCH EXCAVATION SAFETY PROTECTION THAT COMPLY WITH AS A MINIMUM, OSHA STANDARDS FOR TRENCH EXCAVATIONS SPECIFICALLY, CONTRACTOR AND CONTRACTOR'S INDEPENDENTLY RETAINED EMPLOYEE OR SAFETY CONSULTANT SHALL IMPLEMENT A TRENCH SAFETY PROGRAM IN ACCORDANCE WITH OSHA STANDARDS GOVERNING THE PRESENCE AND ACTIVITIES OF INDIVIDUALS WORKING IN AND AROUND TRENCH EXCAVATION.

CAUTION!!!

CONTRACTOR SHALL BE REQUIRED TO LOCATE ALL PUBLIC OR PRIVATE UTILITIES INCLUDING BUT NOT LIMITING TO: WATER, SEWER, TELEPHONE AND FIBER OPTIC LINES, SITE LIGHTING ELECTRIC, SECONDARY ELECTRIC, PRIMARY ELECTRICAL DUCTBANKS, LANDSCAPE IRRIGATION FACILITIES, AND GAS LINES. ANY UTILITY CONFLICTS THAT ARISE SHOULD BE COMMUNICATED TO THE ENGINEER IMMEDIATELY AND PRIOR TO CONSTRUCTION. THE CONTRACTOR SHALL CONTACT 4-800-DIG-DESS A MINIMUM OF 48 HOURS PRIOR TO THE START OF CONSTRUCTION. ANY DAMAGE TO EXISTING UTILITIES SHALL BE THE SOLE RESPONSIBILITY OF THE CONTRACTOR AND THE REPAIR SHALL BE AT CONTRACTOR'S EXPENSE WHETHER THE UTILITY IS SHOWN ON THESE PLANS OR NOT.

SW3P MODIFICATIONS table with columns: DATE, SIGNATURE, DESCRIPTION.

Professional Engineer seal for Vance L. Wehman, DHI Engineering, LLC, and project title: VISTAS DE LA SIERRA SUBDIVISION - PHASE 3, SANTA FE, NM, STORM WATER POLLUTION PREVENTION PLAN, SHEET NO. C8.01.



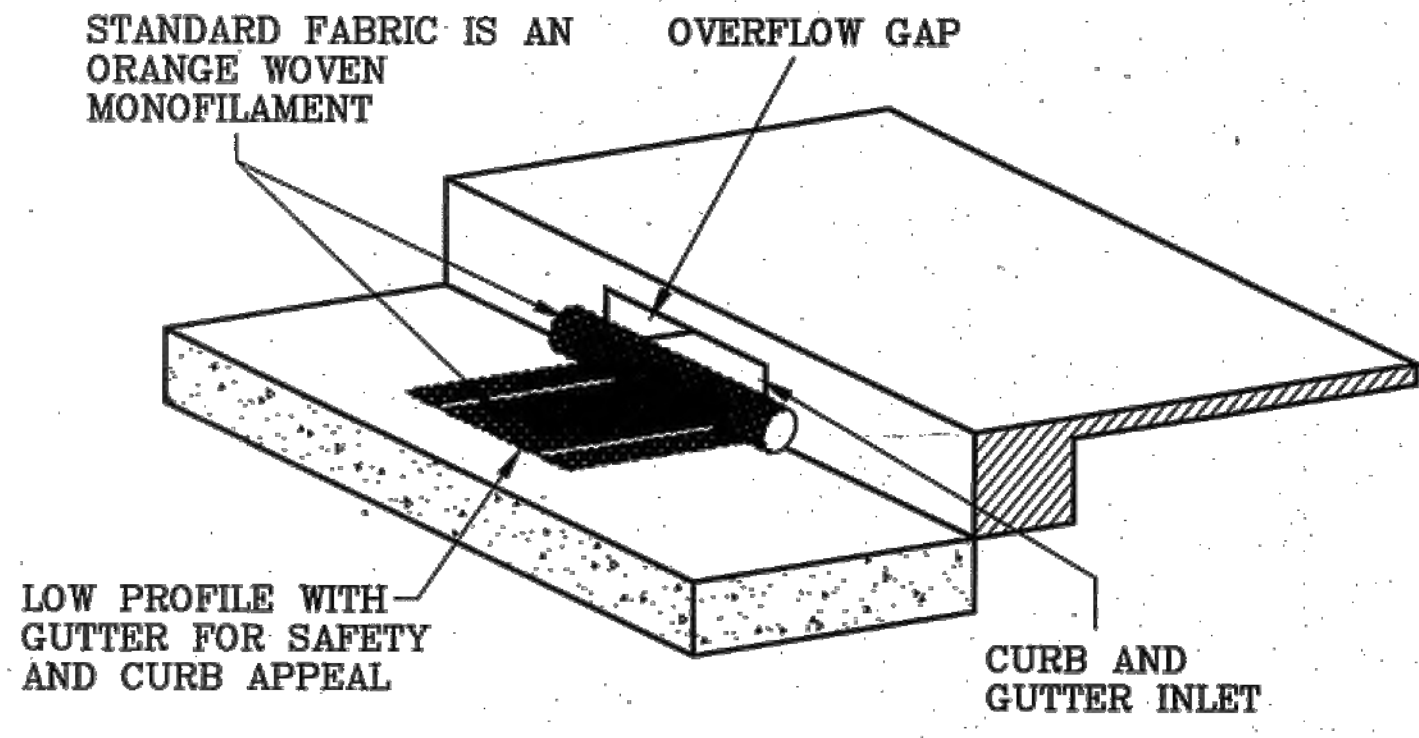
BEAVER DAM

Installation and Maintenance Guidelines

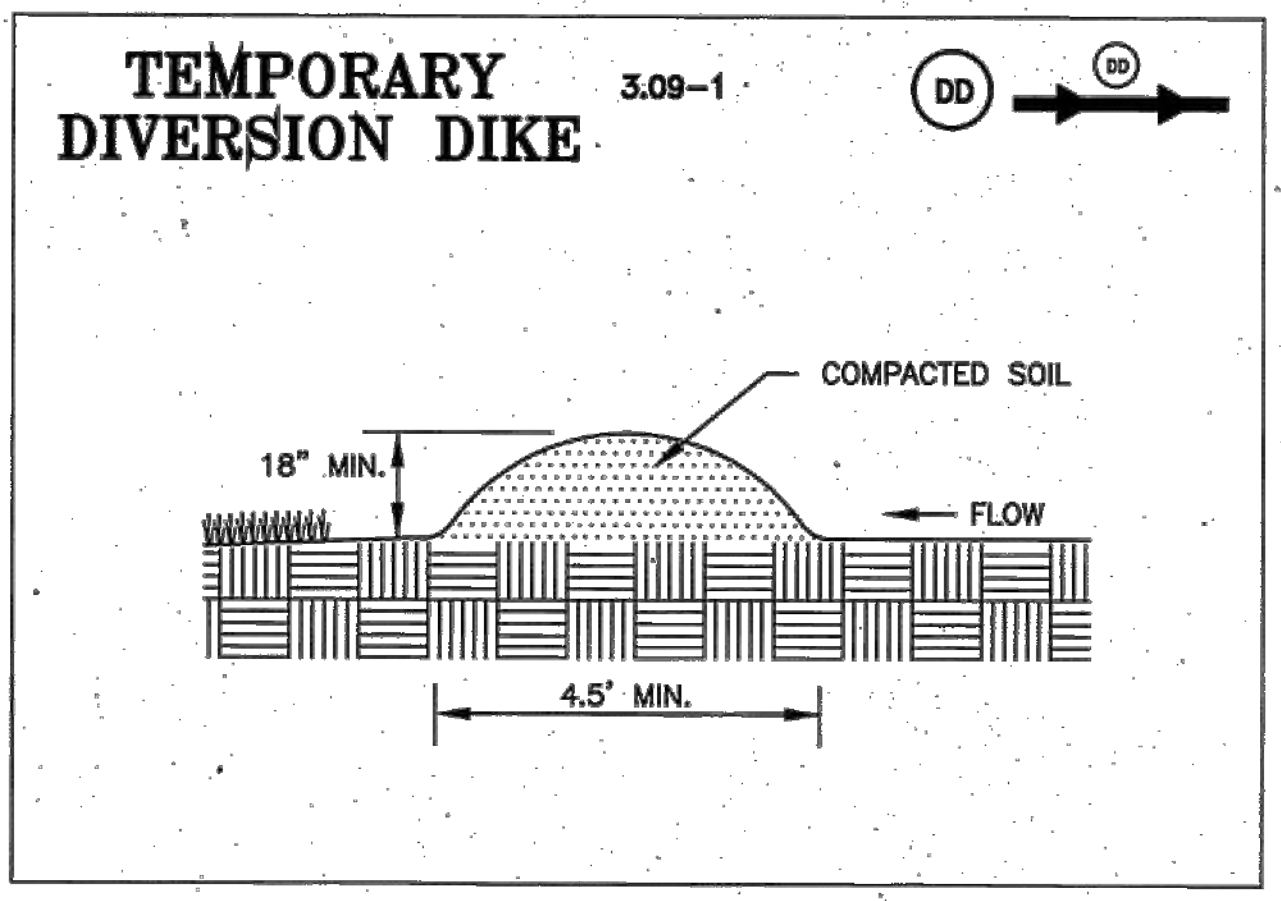
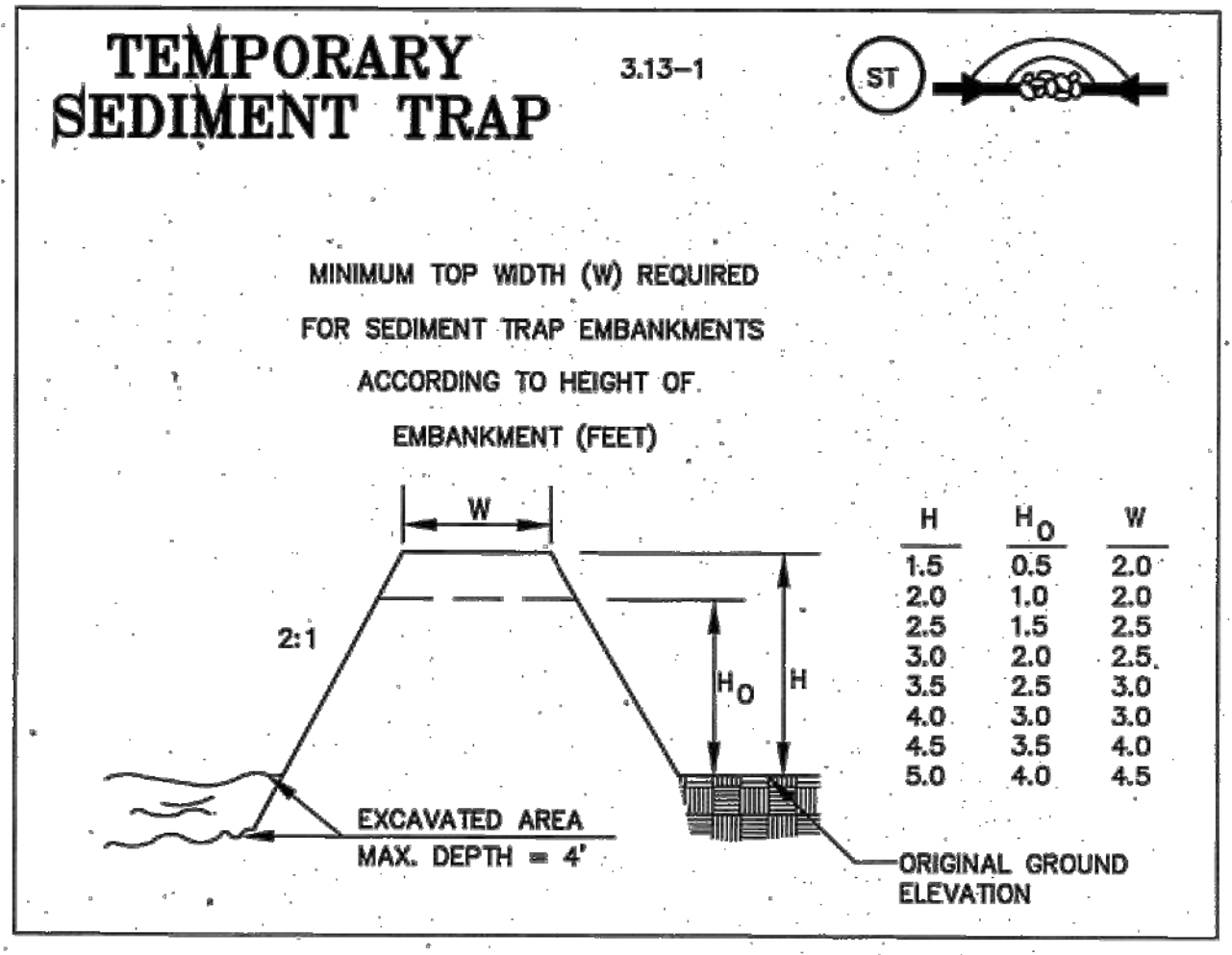
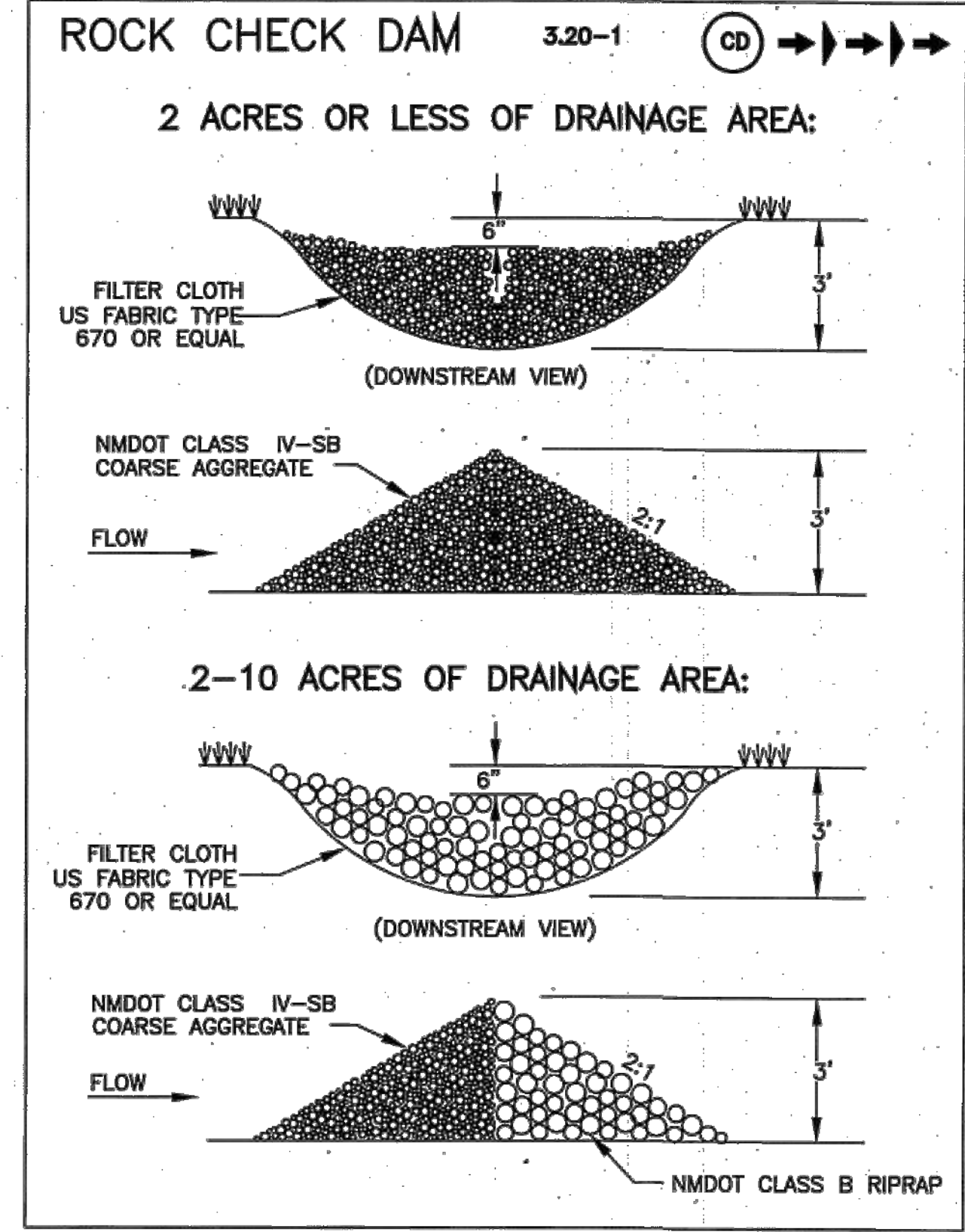
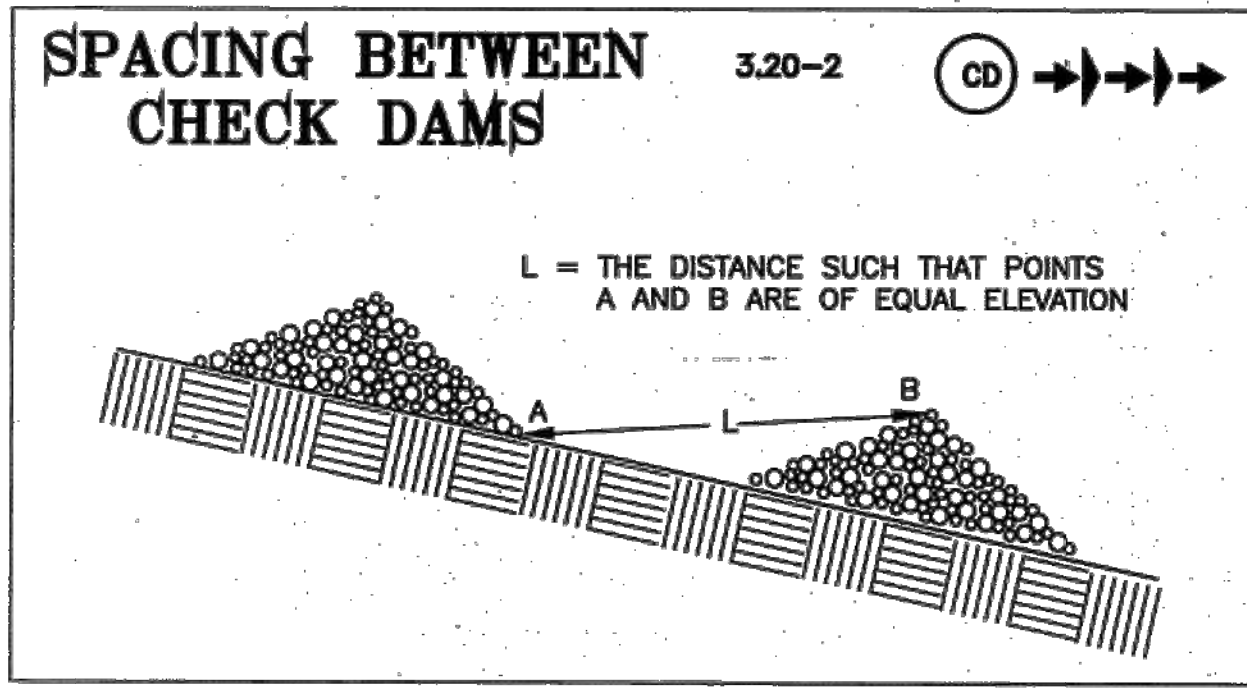
Installation: The empty Beaver Dam should be placed over the grate as the grate stands on end. If using optional oil absorbents; place absorbent pillow on pouch, on the bottom (below-grade side) of the unit. Attach absorbent pillow to tether loop. Tuck the enclosure flap inside to completely enclose the grate. Holding the lifting devices (do not rely on lifting devices to support the entire weight of the grate), place the grate into its frame (street side first), then lower back edge with dam into place. The Beaver Dam should be partially blocking the curb hood when installed properly.

Maintenance: Remove all accumulated sediment and debris from surface and vicinity of unit after each storm event. Remove sediment that has accumulated within the containment area of the Beaver Dam as needed. If using optional oil absorbents; remove and replace absorbent pillow when near saturation.

BEAVER DAM



DESIGN CONFORMS TO ALL SHAPES OF CONCRETE CURBS



VISTAS DE LA SIERRA SUBDIVISION - PHASE 3
SANTA FE, NM
STORM WATER POLLUTION PREVENTION DETAILS

DESIGNED BY: JWS
DRAWN BY: JWS
DATE: 1/28/2025
JOB NO.: 05004
SHEET NO.

1/28/2025
VANCE L WEYLAND
NEW MEXICO
29907
PROFESSIONAL ENGINEER
Vance Weyland

DHI Engineering, LLC.
4419 ANTONIO LOOP EAST
SANTA FE, NM 87507
(505) 466-2988 | dhiengineering.com
TBPE REG. NO. F-19561



DESCRIPTION
DATE
REV

1/28/2025

1/28/2025

1/28/2025

1/28/2025

1/28/2025

1/28/2025

1/28/2025

1/28/2025

1/28/2025

1/28/2025

1/28/2025

1/28/2025

1/28/2025

1/28/2025

1/28/2025

1/28/2025

1/28/2025

1/28/2025

1/28/2025

1/28/2025

1/28/2025

1/28/2025

1/28/2025

1/28/2025

1/28/2025

1/28/2025

1/28/2025

1/28/2025

1/28/2025

1/28/2025

1/28/2025

1/28/2025

1/28/2025

1/28/2025

1/28/2025

1/28/2025

1/28/2025

1/28/2025

1/28/2025

1/28/2025

1/28/2025

1/28/2025

1/28/2025

1/28/2025

1/28/2025

1/28/2025

1/28/2025

1/28/2025

1/28/2025

1/28/2025

1/28/2025

1/28/2025

1/28/2025

1/28/2025

1/28/2025

1/28/2025

1/28/2025

1/28/2025

1/28/2025

1/28/2025

1/28/2025

1/28/2025

1/28/2025

1/28/2025

1/28/2025

1/28/2025

1/28/2025

1/28/2025

1/28/2025

1/28/2025

1/28/2025

1/28/2025

1/28/2025

1/28/2025

1/28/2025

1/28/2025

1/28/2025

1/28/2025

1/28/2025

1/28/2025

1/28/2025