

IRRIGATION EQUIPMENT SCHEDULE

SYMBOL	DESCRIPTION										
M	METER - 2" (SEE UTILITY PLAN)										
B	BACKFLOW PREVENTER: FEBCO 825YA REDUCED PRESSURE BACKFLOW PREVENTER (2" IN HOT BOX HB-2 INSULATED BACKFLOW ENCLOSURE. CONTRACTOR TO PROVIDE POSITIVE HEAT SOURCE TO BACKFLOW PREVENTER.										
⊕	MASTER VALVE: RAINBIRD PEB SERIES PLASTIC ELECTRIC VALVE WITH FLOW CONTROL.										
FS	FLOW SENSOR: RAIN BIRD FS300P IMPELLOR FLOW SENSOR W/GROUNDING PER MANUFACTURER'S RECOMMENDATIONS.										
—	SLEEVING: CLASS 200 PVC SOLVENT WELD, 2 SIZES LARGER THAN PIPE TO BE SLEEVED, 1 PIPE PER SLEEVE.										
—	IRRIGATION MAINLINE: SCHEDULE 40 PVC, SOLVENT WELD (1", 36" DEPTH FOR CONSTANT PRESSURE MAIN AND 24" DEPTH FOR NON-CONSTANT PRESSURE MAIN.										
—	LATERAL PIPING: SCHEDULE 40 PVC, 18" DEPTH, 3/4" UNLESS NOTED OTHERWISE.										
⊕	AUTOMATIC DRIP VALVE ASSEMBLY: RAIN BIRD XCZ-100-PRB-LC CONTROL ZONE CONTROL KIT W/PRESSURE REGULATING BASKET FILTER.										
⊕	AUTOMATIC VALVE ASSEMBLY (SPRINKLERS): RAINBIRD PEB SERIES PLASTIC ELECTRIC VALVE WITH FLOW CONTROL.										
⊕	MANUAL ISOLATION VALVE ASSEMBLY: SPEARS SCH. 80 PVC BALL VALVE WITH UNIONS, (SIZE PER LINE).										
●	POP-UP ROTARY SPRINKLER RAIN BIRD 5000 SERIES ROTOR MODEL NO. RADIUS GPM PSI PR-hr 5000-6-0 50 6.65 55 .59/hr 5000-6-0 50 6.65 55 .59/hr 5000-6-0 50 6.65 55 .59/hr										
●	PVC TO POLY CONNECTION: HUNTER 25 PSI IN-LINE PRESSURE REGULATOR LOCATED IN 8" VALVE BOX										
—	DRIP IRRIGATION TUBING: 3/4" POLYETHYLENE PIPE W/COMPRESSION FITTINGS AND FLUSH CAP. FLUSH CAPS SHALL BE SCH 80 PVC BALL VALVE PLACED IN 10" VALVE BOX. TUBING SHALL BE PINNED EVERY 10'.										
TREES	EMITTER DEVICE: RAIN BIRD XERI-BUG EMITTERS AS DEFINED BELOW. 1/4" DISTRIBUTION TUBING PINNED AT EACH SHRUB/TREE.										
SHRUBS	SHRUBS - (2) XB-10, 1 GPH EMITTERS EACH										
TREES	TREES - (6) XB-20, 2 GPH EMITTERS EACH										
C	CONTROLLERS: RAIN BIRD ESP12-LXME (12 STATION W/ADDITIONAL MODULES AS NECESSARY) W/LXMMSS STAINLESS STEEL CABINET ON LXMMSSPED STAINLESS STEEL PEDESTAL. CONTRACTOR TO PROVIDE ELECTRICAL POWER TO CONTROLLER.										
CONTROLLER	CONTROLLER/STATION NUMBER: <table border="1" style="display: inline-table;"><tr><td>CX</td><td>T</td></tr><tr><td>00</td><td>00</td></tr></table> VALVE TYPE: <table border="1" style="display: inline-table;"><tr><td>SP</td><td>SPRINKLER</td></tr><tr><td>T</td><td>TREE</td></tr><tr><td>S</td><td>SHRUB</td></tr></table>	CX	T	00	00	SP	SPRINKLER	T	TREE	S	SHRUB
CX	T										
00	00										
SP	SPRINKLER										
T	TREE										
S	SHRUB										
GALLONS PER MINUTE	00										



greenlandscapearch@gmail.com
(505) 235-6806

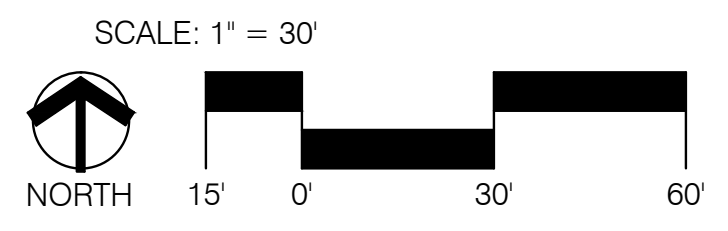
REVISION #	Description	Date

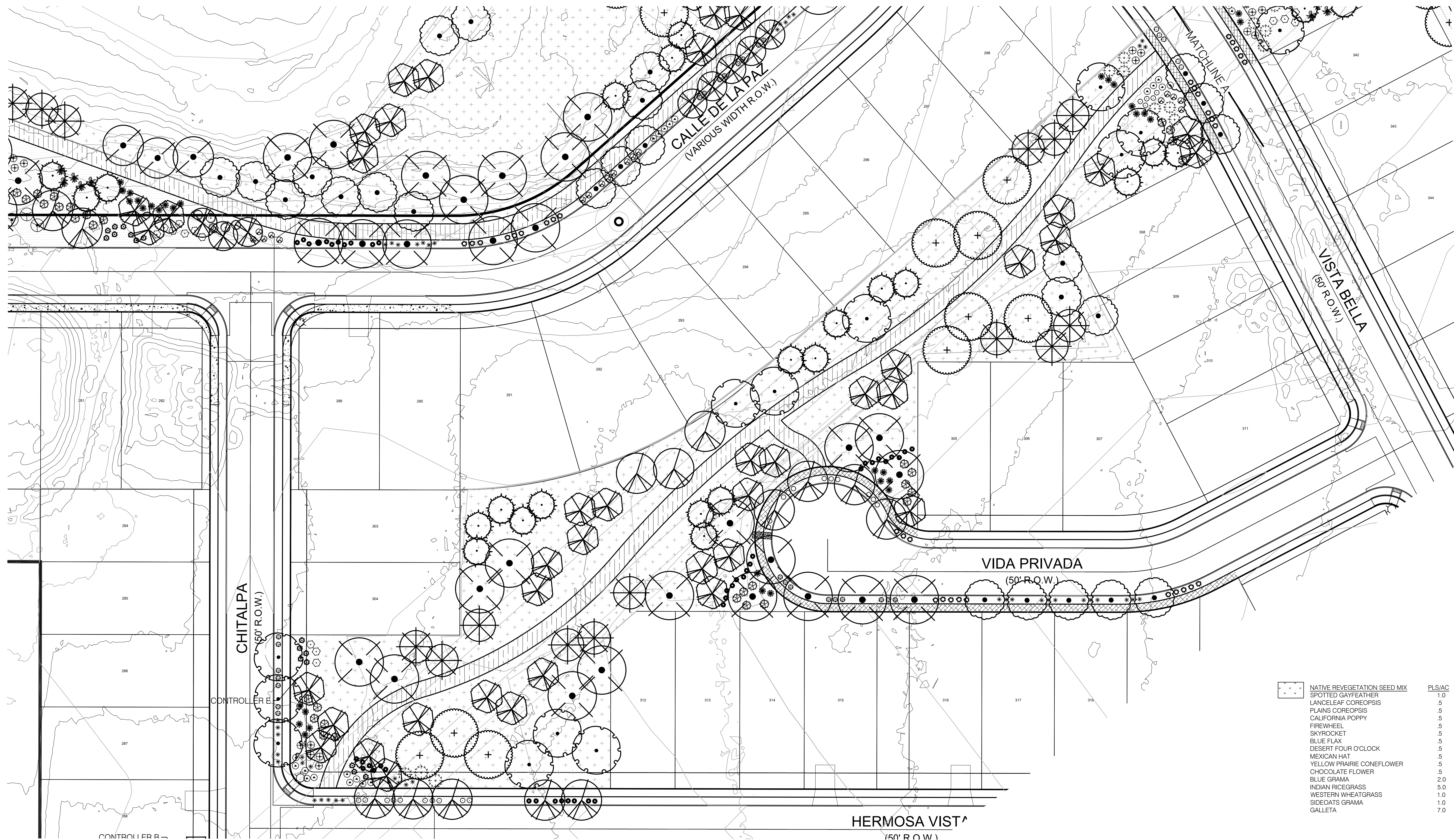
Vistas de la Sierra
Phase 3
Santa Fe, New Mexico



Designed By:	CG
Drawn By:	GLA
Checked By:	CG
Date:	7/2025
Project No:	
Sheet Title:	

IRRIGATION PLAN
LI-103





PLANT LEGEND

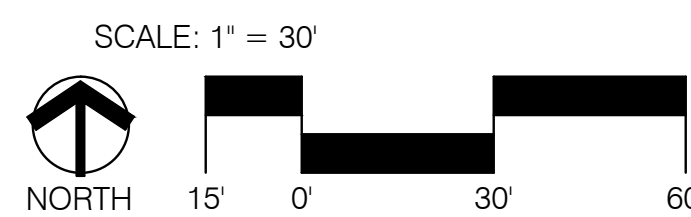
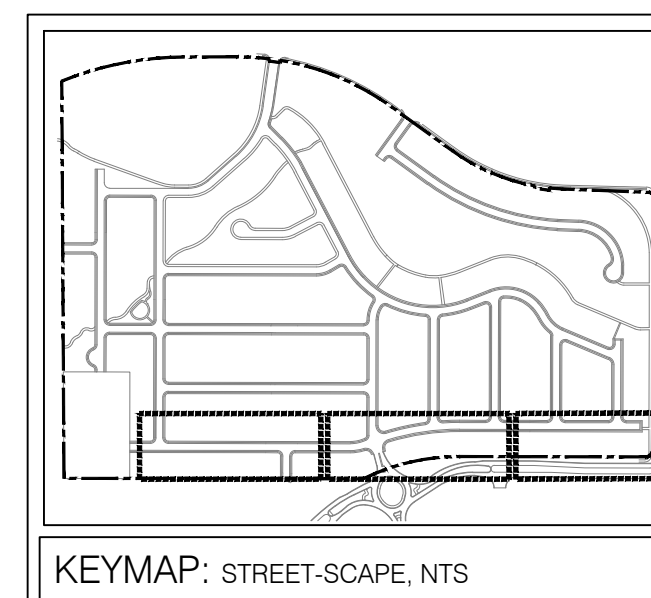
SYMBOL	SCIENTIFIC NAME COMMON NAME	SIZE	MATURE SIZE
DECIDUOUS TREES			
	ACER NEGUNDO 'SENSATION' COMMON HACKBERRY	2.5' B&B	40' HT. X 30' SPR.
	CELTIS OCCIDENTALIS COMMON HACKBERRY	2' B&B	45' HT. X 35' SPR.
	CHIOPSIS LINEARIS DESERT WILLOW	2' B&B	20' HT. X 25' SPR.
	GYMNOCLADUS DIOICUS ESPRESSO KENTUCKY COFFEETREE	2.5' B&B	50' HT. X 35' SPR.
	PISTACIA CHINENSIS CHINESE PISTACHE	2.5' B&B	30' HT. X 30' SPR.
	PYRUS CALLERYANA 'AUTUMN BLAZE' AUTUMN BLAZE PEAR	2.5' B&B	25' HT. X 20' SPR.
	QUERCUS BUCKLEYI TEXAS RED OAK	2.5' B&B	30' HT. X 30' SPR.
	ULMUS PARVIFOLIA 'ALLEE' ALLEE ELM	2.5' B&B	50' HT. X 35' SPR.
	ULMUS PROPINQUA 'JFS BEIBERICH' EMERALD SUNSHINE ELM	2.5' B&B	35' HT. X 25' SPR.

EVERGREEN TREES			
	PINUS HELDREICHII MOONSHINE PINE	6' HT. B&B	40' HT. X 16' SPR.
	PINUS NIGRA AUSTRIAN PINE	6' HT. B&B	35' HT. X 25' SPR.
LARGE SHRUBS			
	JUNIPERUS SCOPULORUM 'SKYROCKET' SKYROCKET ROCKY MTN. JUNIPER	15-GAL.	15' HT. X 4' SPR.
	CARYOPTERIS CLANDONENSIS BLUE MIST SPIREA	5-GAL.	3' HT. X 3' SPR.
	CHRYSOTHAMNUS NAUSEOSUS CHAMISA	5-GAL.	5' HT. X 5' SPR.
	FALLUGIA PARADOXA APACHE PLUME	5-GAL.	6' HT. X 7' SPR.
	FORESTIERA NEOMEXICANA NEW MEXICO OLIVE	15-GAL.	15' HT. X 10' SPR.
	PEROVSKIA ATRIPLICIFOLIA 'LITTLE SPIRE' LITTLE SPIRE RUSSIAN SAGE	5-GAL.	2' HT. X 3' SPR.
	RHUS TRILOBATA THREE-LEAF SUMAC	5-GAL.	6' HT. X 6' SPR.
EVERGREEN SHRUBS AND ACCENTS			
	ERICAMERIA LARICIFOLIA 'AGUIRRE' TURPENTINE BUSH	5-GAL.	3' HT. X 3' SPR.
	DASYLIRION WHEELERI SOTOL	5-GAL.	5' HT. X 5' SPR.

	ACHILLEA MOONSHINE MOONSHINE YARROW	5-GAL.	2' HT. X 2' SPR.
	PINUS MUGO MUGO PINE	5-GAL.	4' HT. X 6' SPR.
	YUCCA BACCATA BANANA YUCCA	5-GAL.	2' HT. X 4' SPR.
	HESPERALOE PARVIFLORA RED YUCCA	5-GAL.	4' HT. X 3' SPR.
SMALL SHRUBS & GROUNDCOVERS			
	POTENTILLA FRUTICOSA SHRUBBY CINQUEFOIL	5-GAL.	3' HT. X 3' SPR.
	CENTRANTHUS RUBER JUPITER'S BEARD	1-GAL.	2' HT. X 2' SPR.
	NEPETA X FAASSENII 'SIX HILLS GIANT' SIX HILLS GIANT CATMINT	1-GAL.	3' HT. X 3' SPR.
	PENSTEMON PINIFOLIUS PINELAF PENSTEMON	1-GAL.	1' HT. X 2' SPR.
	RHUS TRILOBATA 'AUTUMN AMBER' CREEPING THREE-LEAF SUMAC	1-GAL.	2' HT. X 7' SPR.
	MIRABILIS MULTIFLORA WESTERN FOUR O'CLOCK	1-GAL.	2' HT. X 5' SPR.
	RHUS AROMATICA 'GRO LOW' GRO LOW SUMAC	5-GAL.	2' HT. X 6' SPR.

ORNAMENTAL GRASSES			
	BOUTELOUA GRACILIS 'BLONDE AMBITION' BLONDE AMBITION BLUE GRAMA	1-GAL.	3' HT. X 3' SPR.
	CALAMAGROSTIS A. 'KARL FOERSTER' KARL FOERSTER REED GRASS	1-GAL.	4' HT. X 2' SPR.
	MULHENBERGIA CAPILLARIS REGAL MIST	5-GAL.	3' HT. X 3' SPR.
	PENNISETUM ALOPECUROIDES HAMELN FOUNTAIN GRASS	1-GAL.	2' HT. X 2' SPR.
GRAVEL MULCH, BOULDERS AND RE-VEGETATIVE SEEDING			
	MOSS ROCK BOULDERS (3X3 MIN)		
	1' BUILDOLGY BROWN ROCK MULCH (3" DEPTH OVER DEWITT WEED CONTROL FABRIC) OR PRE-APPROVED EQUAL		
	1' TAMPICO (3" DEPTH OVER DEWITT WEED CONTROL FABRIC) OR PRE-APPROVED EQUAL		
	2-4' VALLEY GOLD (4" DEPTH OVER DEWITT WEED CONTROL FABRIC) OR PRE-APPROVED EQUAL		
	3/8-1-1/4' VENETIAN BROWN (3" DEPTH OVER DEWITT WEED CONTROL FABRIC) OR PRE-APPROVED EQUAL		

	NATIVE REVEGETATION SEED MIX	PLS/AC	1.0
	SPOTTED GAYFEATHER		5
	LANCELEAF COREOPSIS		5
	PLAINS COREOPSIS		5
	CALIFORNIA POPPY		5
	FIREWHEEL		5
	SKYROCKET		5
	BLUE FLAX		5
	DESERT FOUR O'CLOCK		5
	MEXICAN HAT		5
	YELLOW PRAIRIE CONEFLOWER		5
	CHOCOLATE FLOWER		5
	BLUE GRAMA		2.0
	INDIAN RICEGRASS		5.0
	WESTERN WHEATGRASS		1.0
	SIDEOATS GRAMA		1.0
	GALLETIA		7.0



greenlandscapearch@gmail.com
(505) 235-6806

#	Date	Description
1	7/2025	ISSUED FOR PERMIT
2		
3		
4		
5		
6		
7		
8		
9		
10		

Vistas de la Sierra Phase 3

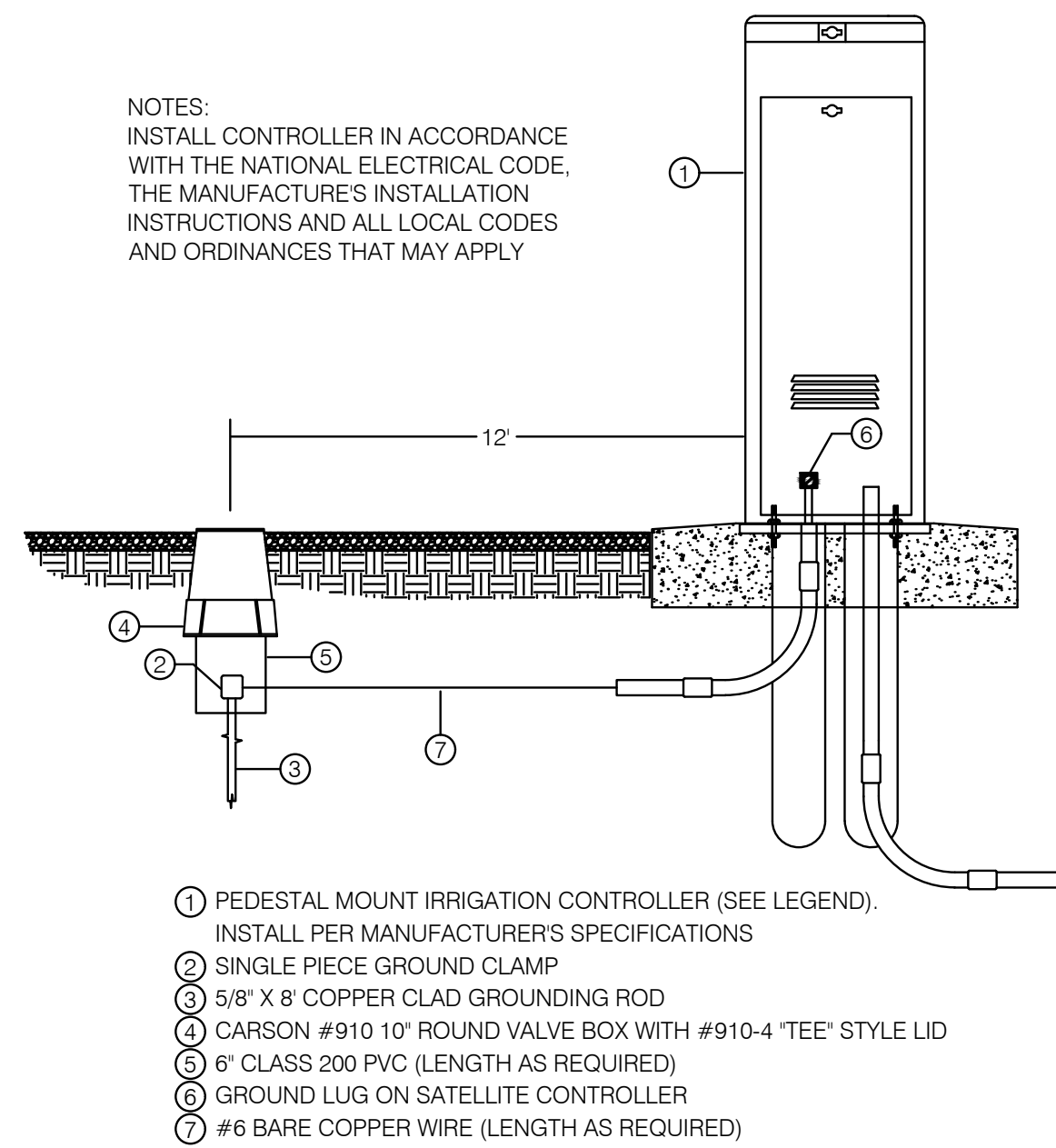
Santa Fe, New Mexico

Landscape Architect's Seal:

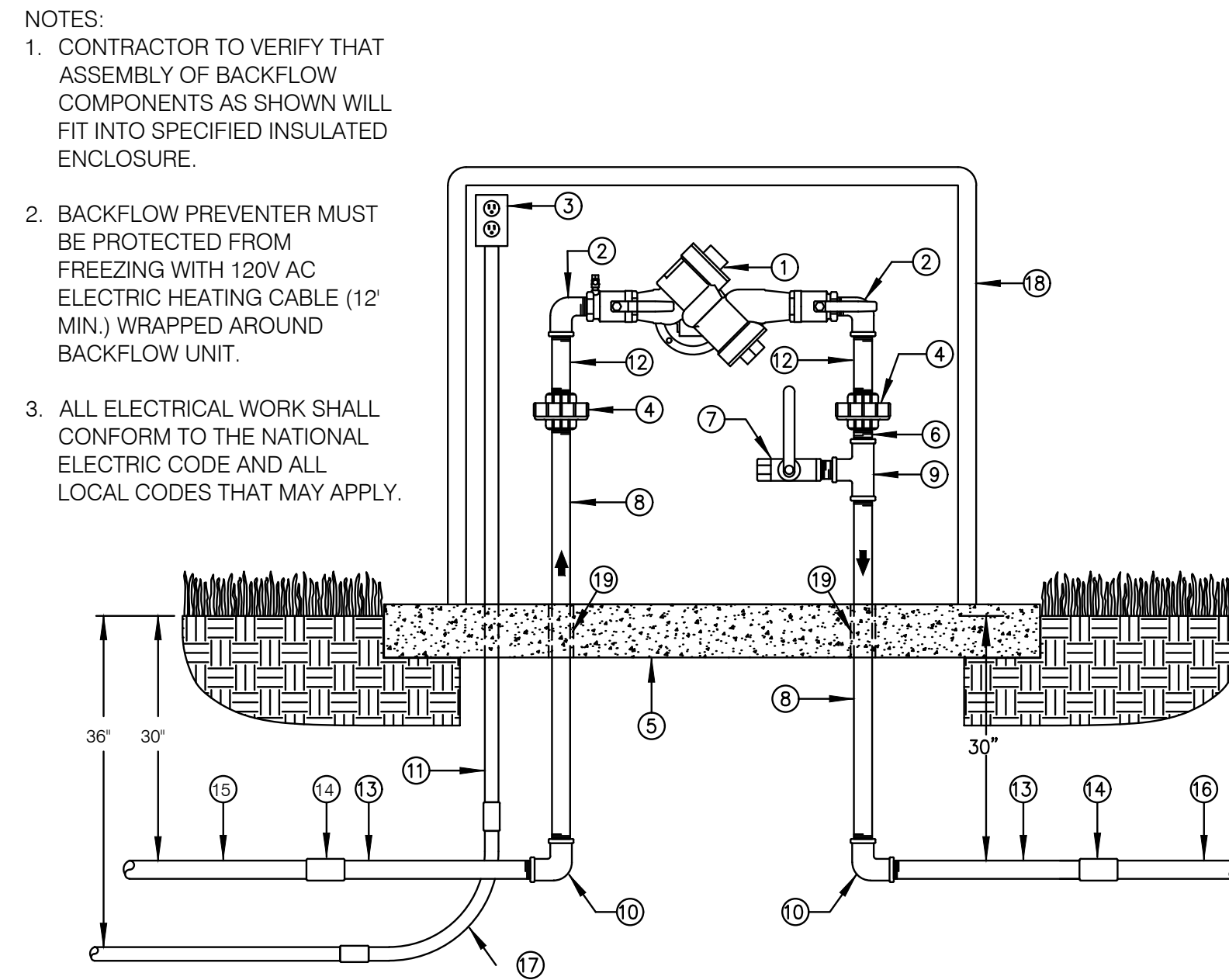


Designed By:	CG
Drawn By:	GLA
Checked By:	CG
Date:	7/2025
Project No:	
Sheet Title:	

PLANTING PLAN
LP-102

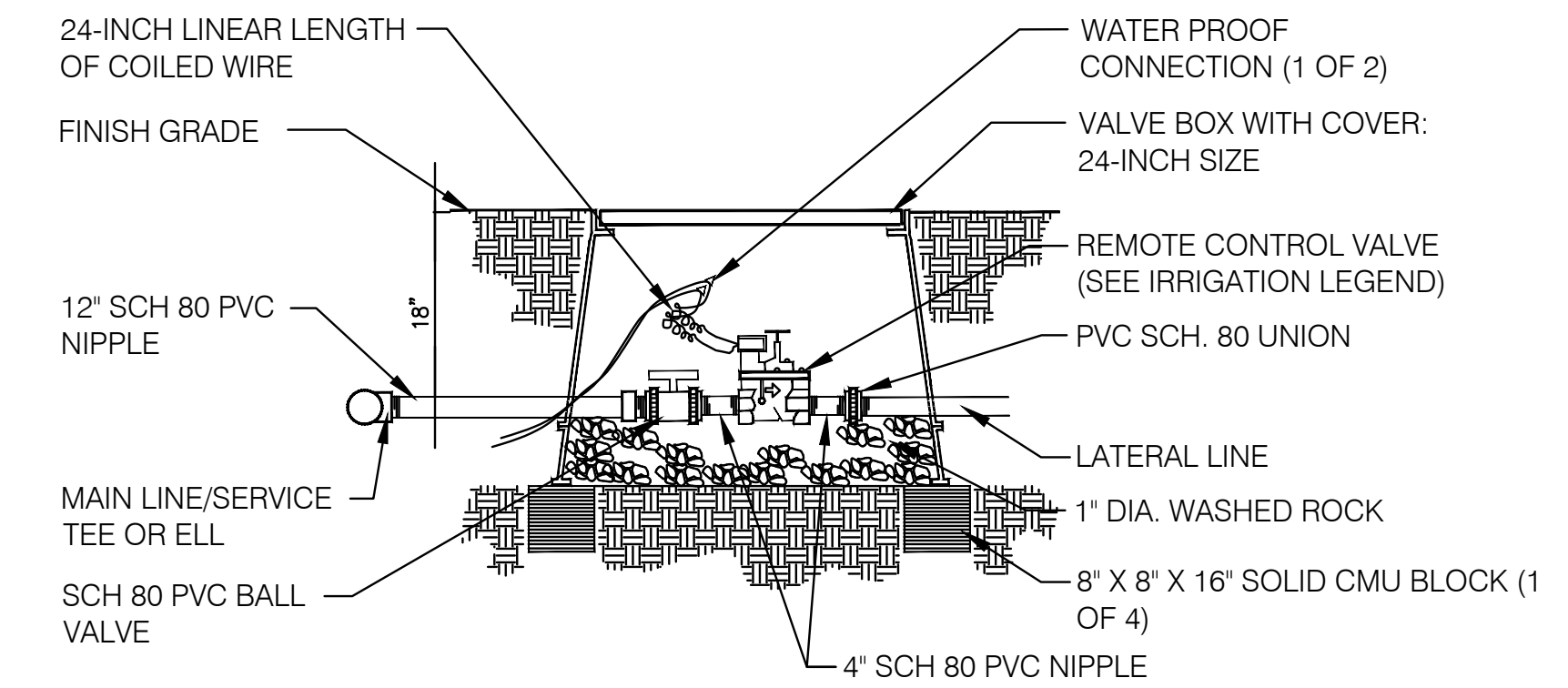


1 CONTROLLER - PEDESTAL MOUNT
SCALE: N.T.S.

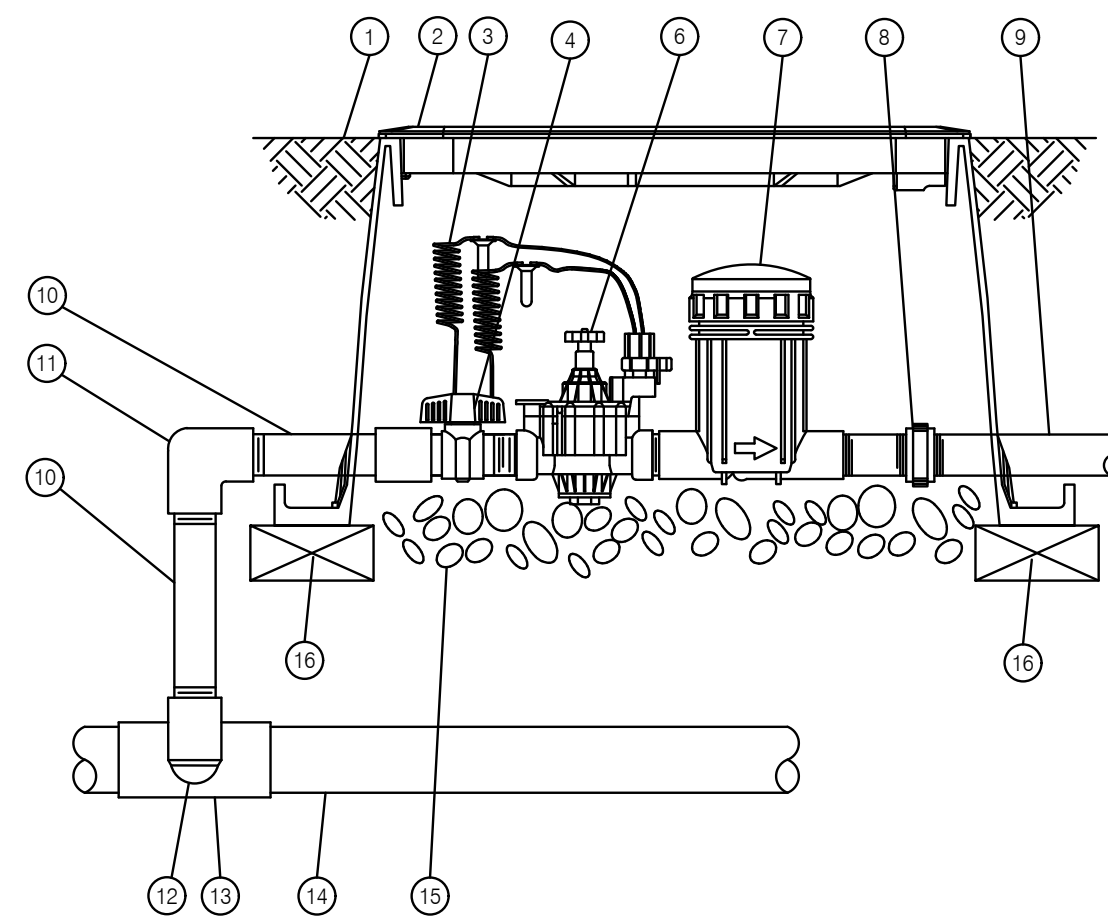


2 BACKFLOW PREVENTER
SCALE: N.T.S.

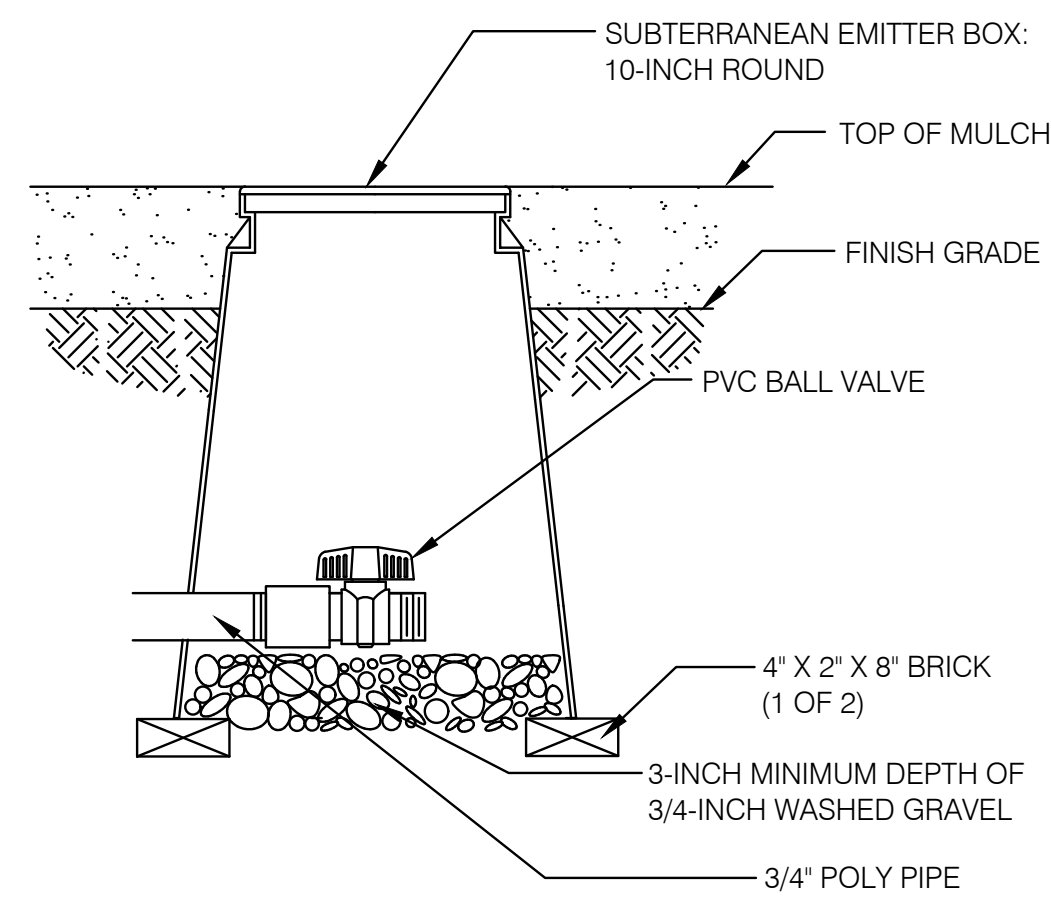
- KEYED NOTES
- REDUCED PRESSURE BACKFLOW PREVENTER (SEE LEGEND FOR MODEL AND SIZE)
 - GALVANIZED STREET ELL
 - 120 VOLT ELECTRICAL OUTLET (INSTALL PER NEC AND LOCAL CODES)
 - GALVANIZED UNION
 - 3000 PSI CONCRETE PAD - 4" THICK (SEE ENCLOSURE MANUFACTURER'S RECOMMENDATIONS FOR PAD DIMENSIONS)
 - CLOSE GALVANIZED NIPPLE
 - WATTS #B-6000 SERIES 1" BALL VALVE
 - GALVANIZED NIPPLE (LENGTH AS REQUIRED)
 - CLOSE GALVANIZED TEE WITH 1" SIDE OUTLET
 - GALVANIZED ELL
 - PVC ELECTRICAL CONDUIT
 - 4" GALVANIZED NIPPLE
 - 12" SCH.80 PVC TOE NIPPLE
 - SCH.80 PVC COUPLING WITH REDUCER BUSHING IF REQUIRED
 - PVC PIPING FROM WATER SOURCE
 - PVC PIPING TO SYSTEM ELECTRICAL
 - SWEEP ELL
 - HOT BOX INSULATED BACKFLOW DEVICE ENCLOSURE (SEE LEGEND FOR SIZE)
 - PVC SLEEVE



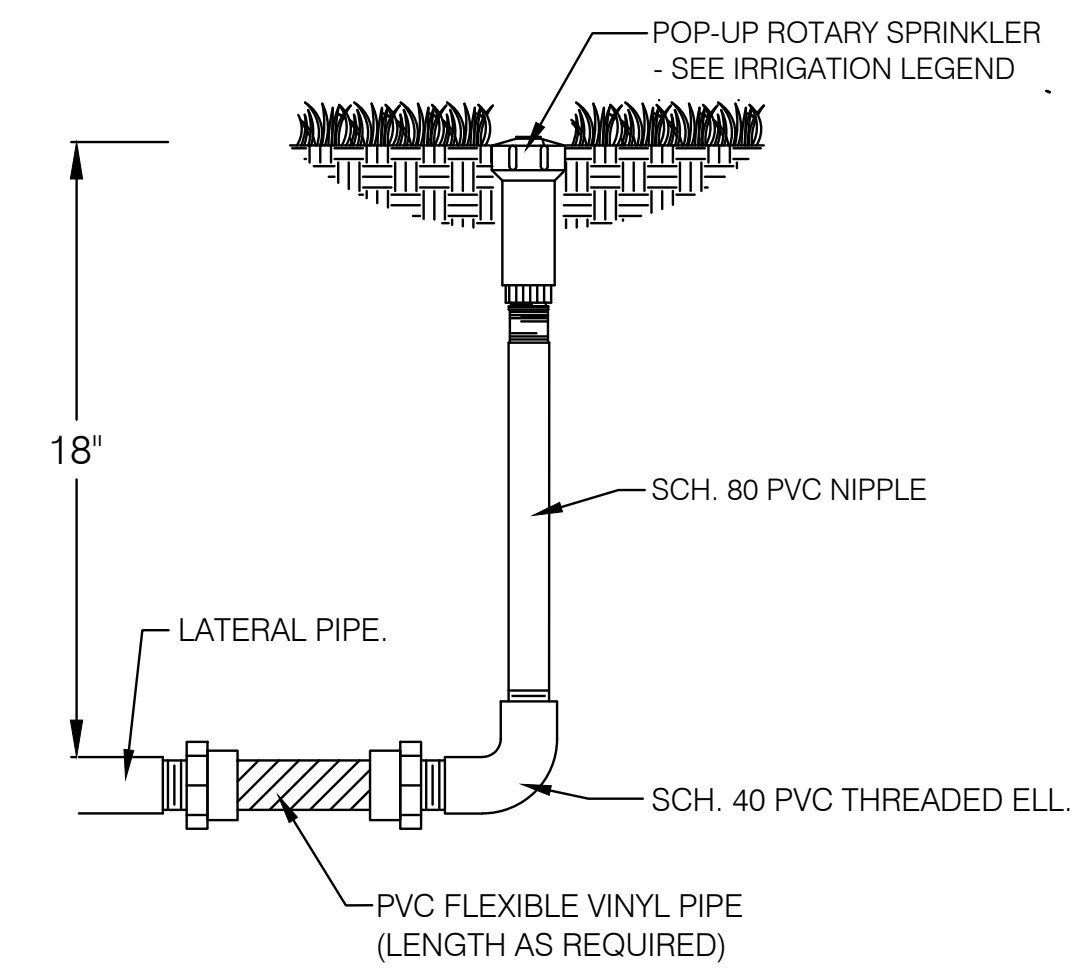
3 AUTOMATIC VALVE (MASTER)
SCALE: N.T.S.



4 DRIP VALVE ASSEMBLY
SCALE: N.T.S.



5 DRIP FLUSH VALVE
SCALE: N.T.S.



6 POP-UP ROTARY SPRINKLER
SCALE: N.T.S.



GREEN
LANDSCAPE
ARCHITECTURE

greenlandscapearch@gmail.com
(505) 235-6806

REVISION #	Description	Date

Vistas de la Sierra
Phase 3
Santa Fe, New Mexico

Landscape Architect's Seal:



Designed By:	CG
Drawn By:	GLA
Checked By:	CG
Date:	7/2025
Project No:	
Sheet Title:	

IRRIGATION
DETAILS
L-501

REVISION #	Description	Date

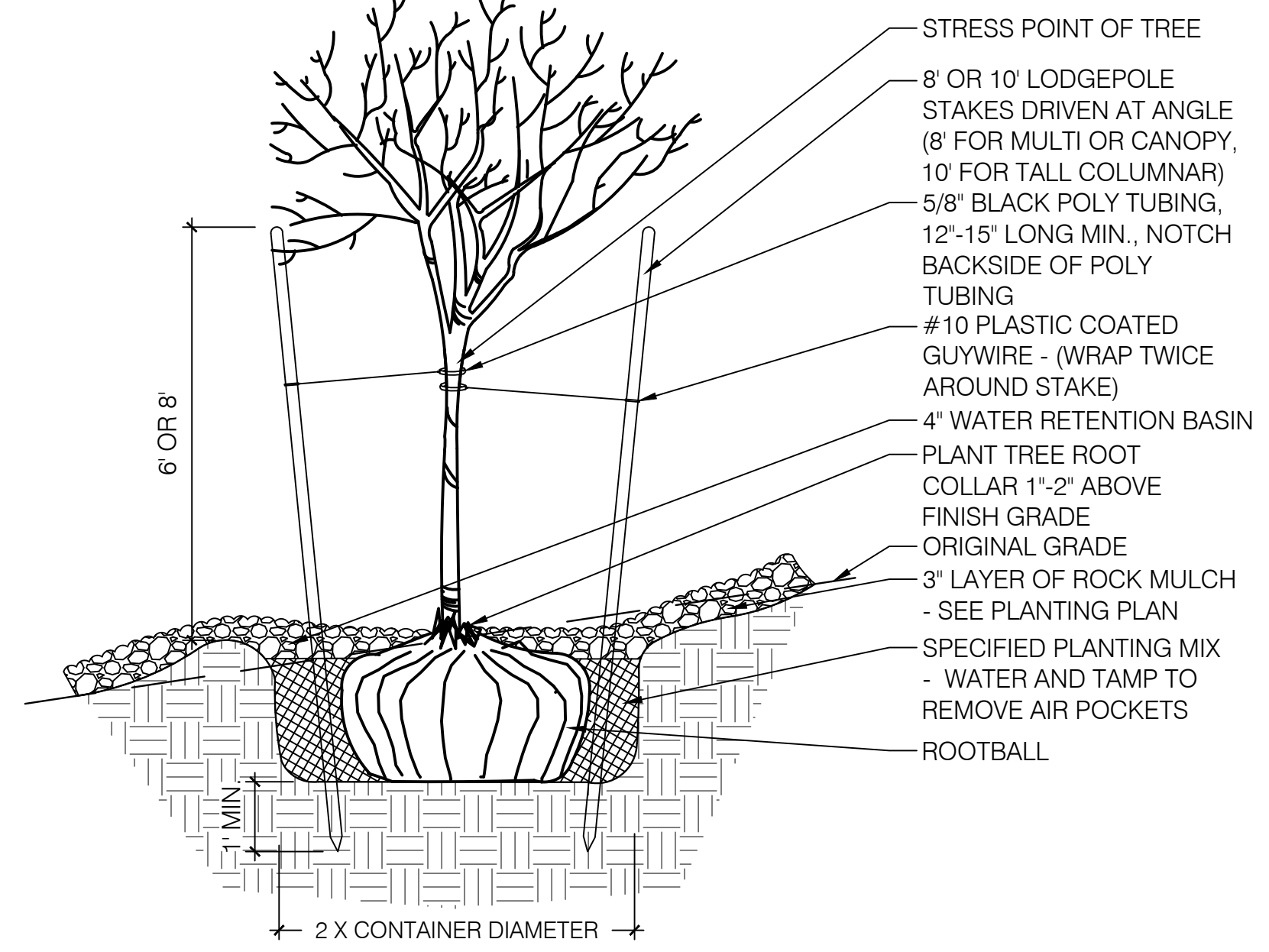
Vistas de la Sierra Phase 3 Santa Fe, New Mexico

Landscape Architect's Seal:

Designed By: CG
 Drawn By: GLA
 Checked By: CG
 Date: 7/2025
 Project No:
 Sheet Title:

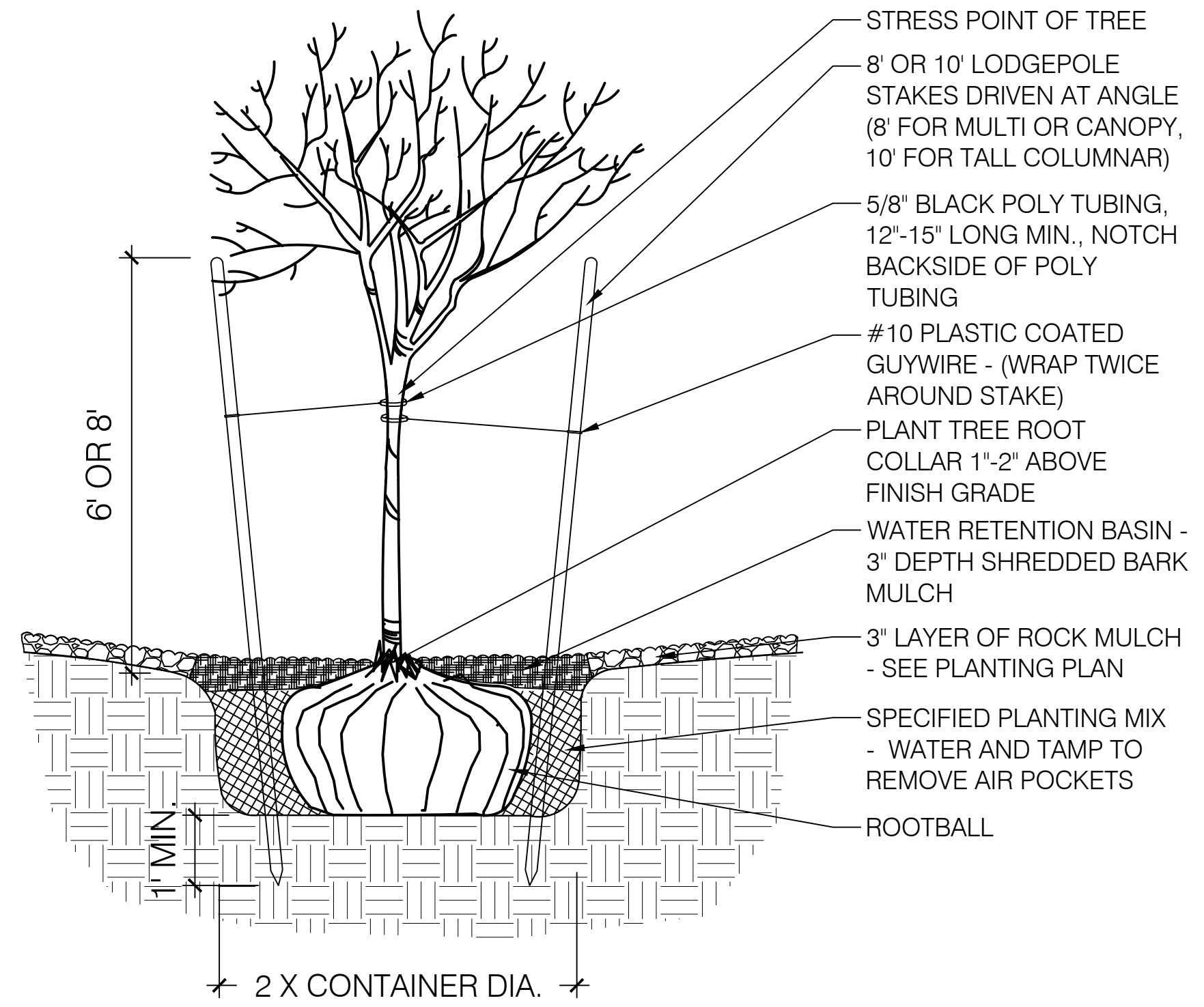
LANDSCAPE
DETAILS
L-502

- NOTES:
 A. THE WATER RETENTION BASIN SHALL BE TWICE THE PLANTING PIT DIAMETER.
 B. THE EDGES OF THE WATER RETENTION BASIN SHALL BE SMOOTHLY FORMED WITH NO OBTRUSIVE EDGES.
 C. REMOVE ROPE AND BURLAP AFTER PLANTING.



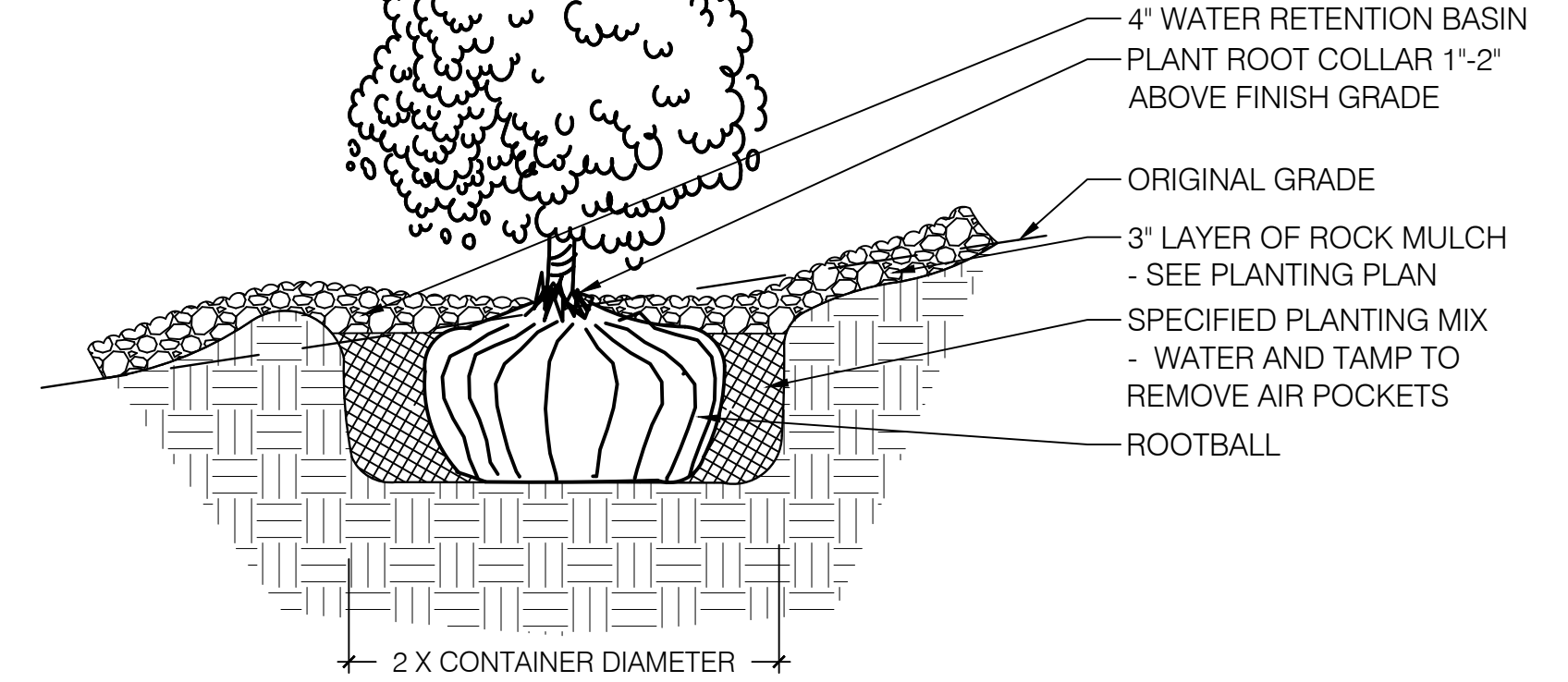
1 TREE PLANTING ON A SLOPE SCALE: N.T.S.

- NOTES:
 A. THE WATER RETENTION BASIN SHALL BE TWICE THE PLANTING PIT DIAMETER.
 B. THE EDGES OF THE WATER RETENTION BASIN SHALL BE SMOOTHLY FORMED WITH NO OBTRUSIVE EDGES.
 C. REMOVE ROPE AND BURLAP AFTER PLANTING.



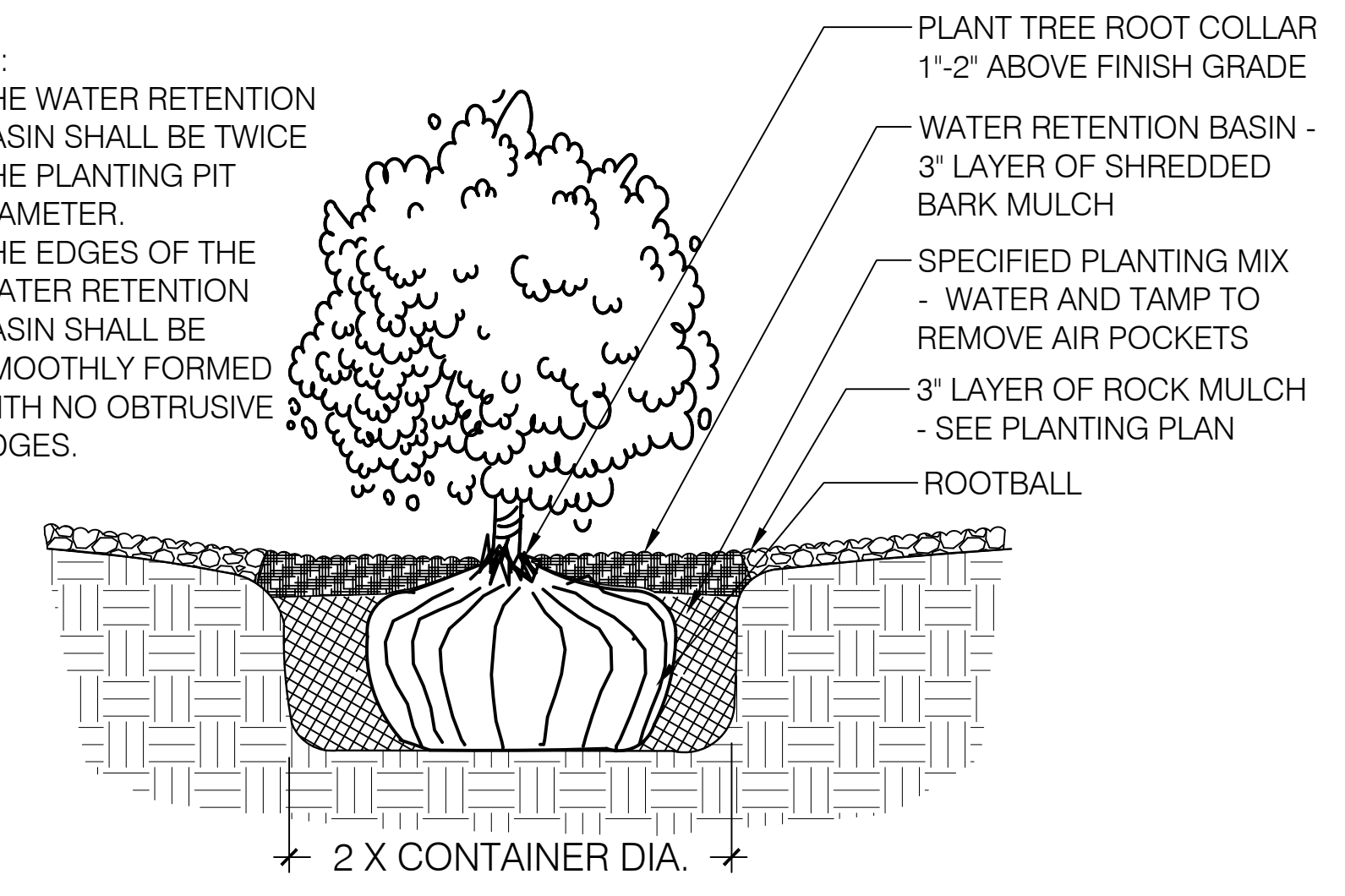
2 TREE PLANTING SCALE: N.T.S.

- NOTES:
 A. THE WATER RETENTION BASIN SHALL BE TWICE THE PLANTING PIT DIAMETER.
 B. THE EDGES OF THE WATER RETENTION BASIN SHALL BE SMOOTHLY FORMED WITH NO OBTRUSIVE EDGES.
 C. REMOVE ROPE AND BURLAP AFTER PLANTING.

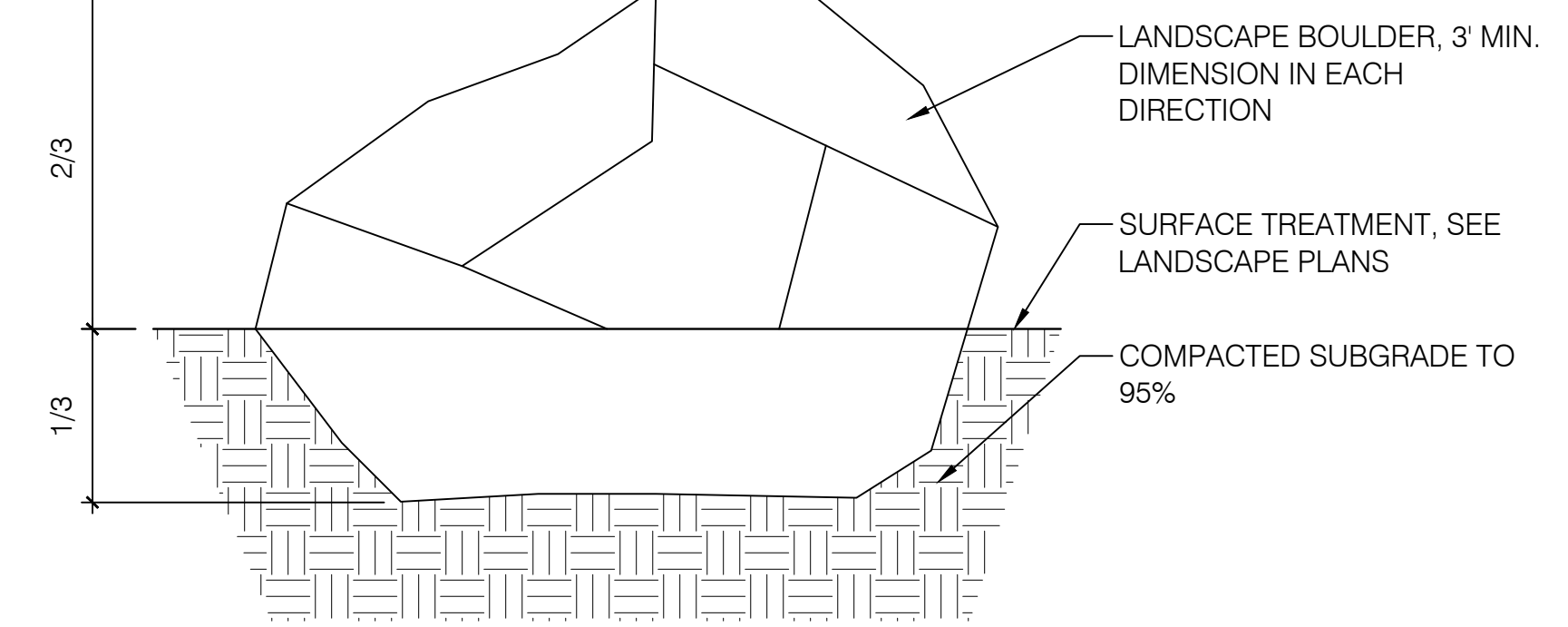


3 SHRUB PLANTING ON A SLOPE SCALE: N.T.S.

- NOTES:
 A. THE WATER RETENTION BASIN SHALL BE TWICE THE PLANTING PIT DIAMETER.
 B. THE EDGES OF THE WATER RETENTION BASIN SHALL BE SMOOTHLY FORMED WITH NO OBTRUSIVE EDGES.



4 SHRUB PLANTING SCALE: N.T.S.



5 LANDSCAPE BOULDER SCALE: N.T.S.