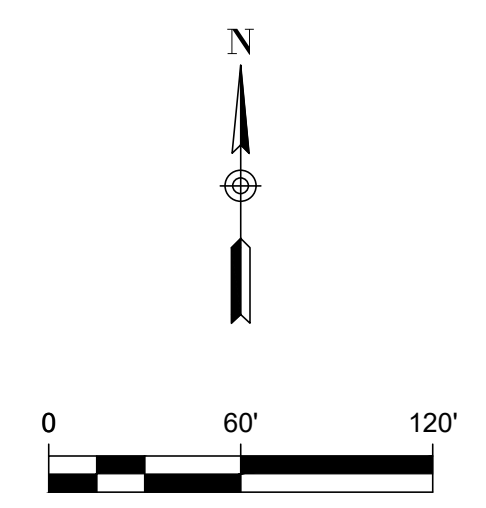
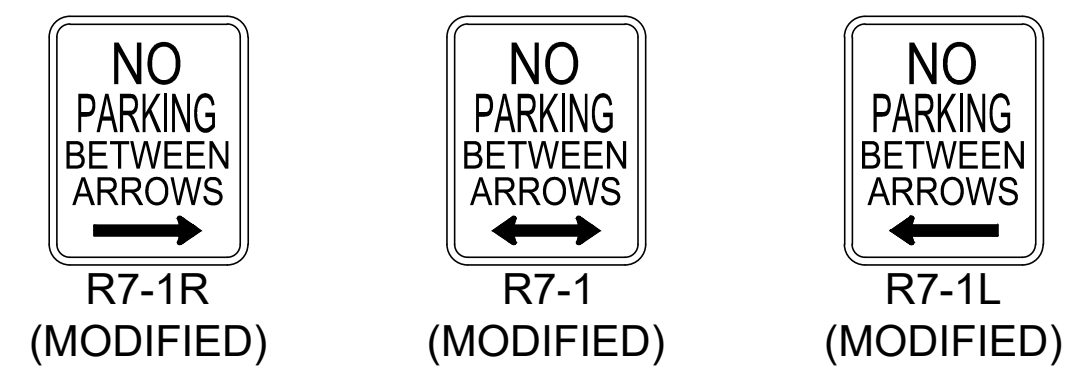


LOCATION MAP NOT-TO-SCALE



LEGEND (FIRE ACCESS)	
	PROJECT LIMITS
	PROPOSED WATER
	FIRE HYDRANT
	PROPOSED 3/4" SINGLE SERVICE WITH 5/8" METER
	PROPOSED 1" DUAL SERVICE WITH 5/8" METER
	STREET LIGHT
	FIRE ACCESS LANE (DRIVEABLE)

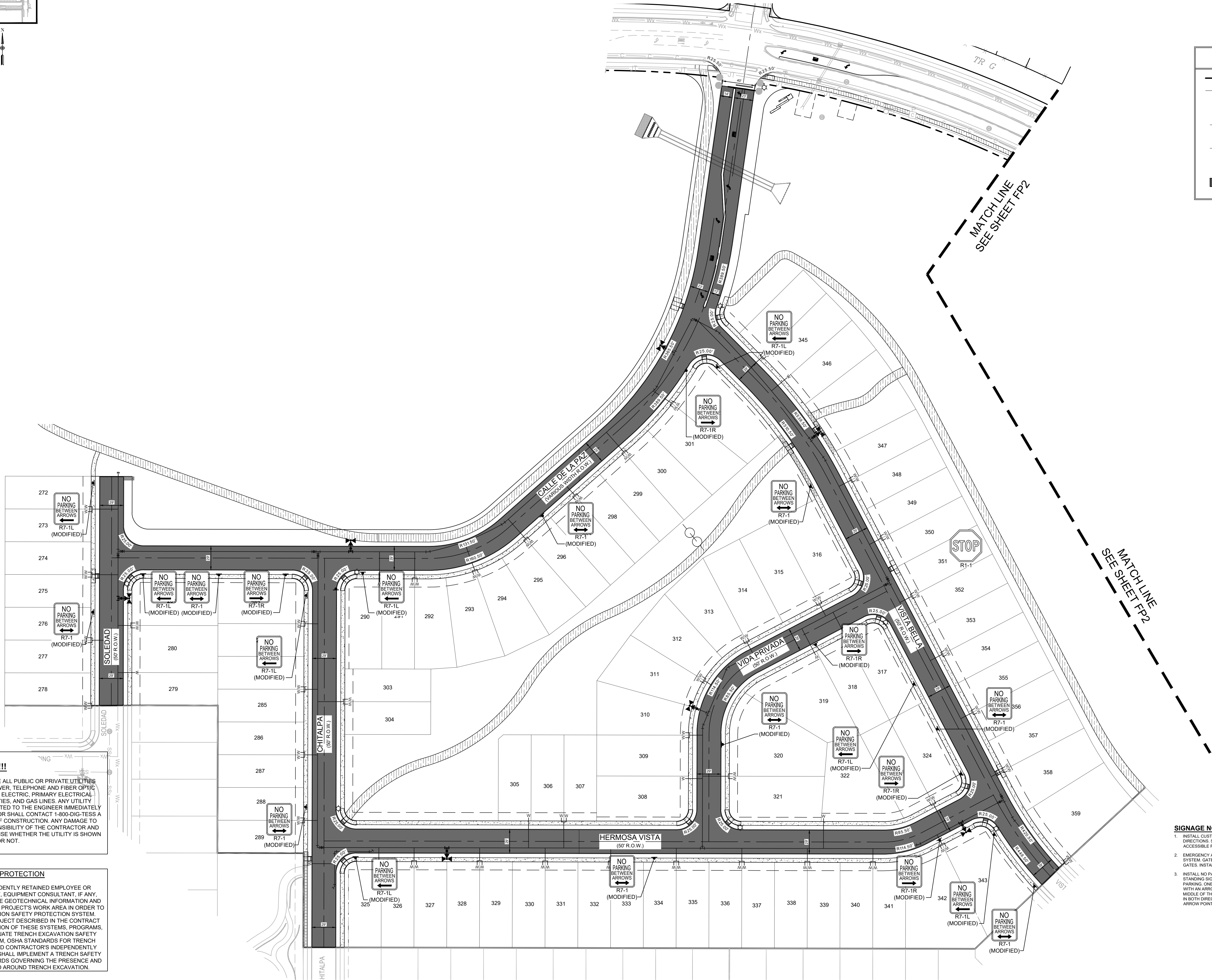


CAUTION!!!

CONTRACTOR SHALL BE REQUIRED TO LOCATE ALL PUBLIC OR PRIVATE UTILITIES INCLUDING BUT NOT LIMITING TO: WATER, SEWER, TELEPHONE AND FIBER OPTIC LINES, SITE LIGHTING ELECTRIC, SECONDARY ELECTRIC, PRIMARY ELECTRICAL DUCTBANKS, LANDSCAPE IRRIGATION FACILITIES, AND GAS LINES. ANY UTILITY CONFLICTS THAT ARISE SHOULD BE COMMUNICATED TO THE ENGINEER IMMEDIATELY AND PRIOR TO CONSTRUCTION. THE CONTRACTOR SHALL CONTACT 1-800-DIG-TESS A MINIMUM OF 48 HOURS PRIOR TO THE START OF CONSTRUCTION. ANY DAMAGE TO EXISTING UTILITIES SHALL BE THE SOLE RESPONSIBILITY OF THE CONTRACTOR AND THE REPAIR SHALL BE AT CONTRACTOR'S EXPENSE WHETHER THE UTILITY IS SHOWN ON THESE PLANS OR NOT.

TRENCH EXCAVATION PROTECTION

CONTRACTOR AND CONTRACTOR'S INDEPENDENTLY RETAINED EMPLOYEE OR STRUCTURAL DESIGN, GEOTECHNICAL, SAFETY, EQUIPMENT CONSULTANT, IF ANY, SHALL REVIEW THESE PLANS AND ANY AVAILABLE GEOTECHNICAL INFORMATION AND THE ANTICIPATED INSTALLATION SITE WITHIN THE PROJECT'S WORK AREA IN ORDER TO IMPLEMENT CONTRACTOR'S TRENCH EXCAVATION SAFETY PROTECTION SYSTEM. PROGRAMS AND/OR PROCEDURES FOR THE PROJECT DESCRIBED IN THE CONTRACT DOCUMENTS. THE CONTRACTOR'S IMPLEMENTATION OF THESE SYSTEMS, PROGRAMS, AND PROCEDURES SHALL PROVIDE FOR ADEQUATE TRENCH EXCAVATION SAFETY PROTECTION THAT COMPLY WITH AS A MINIMUM, OSHA STANDARDS FOR TRENCH EXCAVATIONS SPECIFICALLY, CONTRACTOR AND CONTRACTOR'S INDEPENDENTLY RETAINED EMPLOYEE OR SAFETY CONSULTANT SHALL IMPLEMENT A TRENCH SAFETY PROGRAM IN ACCORDANCE WITH OSHA STANDARDS GOVERNING THE PRESENCE AND ACTIVITIES OF INDIVIDUALS WORKING IN AND AROUND TRENCH EXCAVATION.



MATCH LINE SEE SHEET FP2

MATCH LINE SEE SHEET FP2

SIGNAGE NOTES:

- INSTALL CUSTOM SIGNS AT DEAD ENDS OF SIDEWALKS PER CITY OF SANTA FE (C.O.S.F.) DIRECTIONS. SIGNS TO BE BLUE WITH WHITE LETTERING. "ACCESSIBLE ROUTE ENDS AHEAD" OR "NO ACCESSIBLE ROUTE."
- EMERGENCY ACCESS VEHICULAR PIPE GATE EQUIPPED WITH KNIX BOX RESTRICTED ENTRY SYSTEM. GATE SHALL COMPLY WITH IFC 2009 SECTION D103.5 - FIRE APPARATUS ACCESS ROAD GATES. INSTALL REFLECTIVE SIGN ON GATE FOR VISIBILITY TO SUBDIVISION.
- INSTALL NO PARKING SIGNS PER MUTCD SECTION 2B.44. PLACEMENT OF PARKING, STOPPING AND STANDING SIGNS. AT LEAST THREE NO PARKING SIGNS ON EACH STREET WHERE THERE IS NO PARKING. ONE SIGN AT THE BEGINNING OF ROAD THAT STATES "NO PARKING BETWEEN ARROWS" WITH AN ARROW BELOW POINTING DOWN THE SIDE WHERE PARKING IS NOT ALLOWED. ONE IN THE MIDDLE OF THE BLOCK THAT ALSO SAYS "NO PARKING BETWEEN ARROWS" WITH ARROWS POINTING IN BOTH DIRECTIONS AND ONE AT THE FAR END OF THE STREET SAYING THE SAME THING WITH THE ARROW POINTING BACK DOWN THE STREET.

VISTAS DE LA SIERRA SUBDIVISION - PHASE 3
 SANTA FE, NM
FIRE ACCESS PLAN

DESIGNED BY: SQV
 DRAWN BY: SQV
 DATE: 8/4/2025
 JOB NO.: 05004
 SHEET NO.

FP1

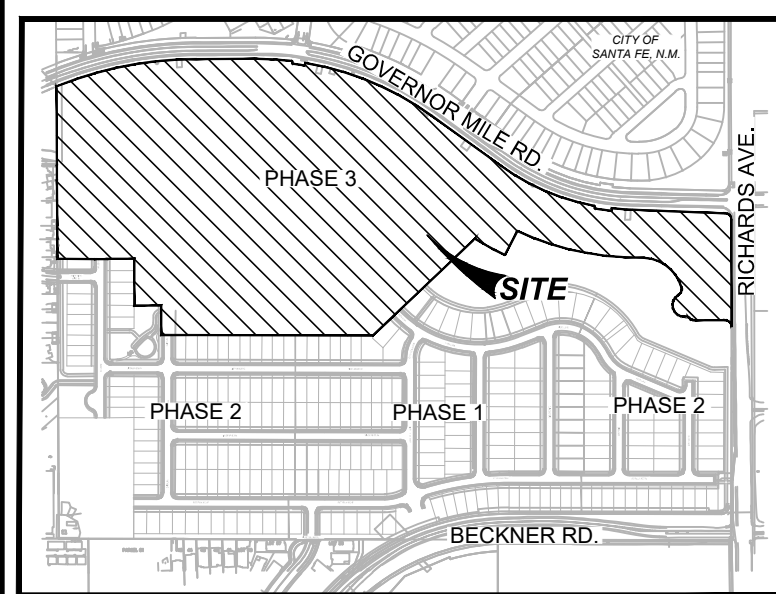
8/4/2025

Vance Weynand

DHI Engineering, LLC.
 4419 ANTELOPE LOOP EAST
 SANTA FE, NM 87507
 (505) 426-2988 | dhiengineering.com
 TBPE REG. NO. F-195661



REV	DATE	DESCRIPTION



LOCATION MAP
NOT-TO-SCALE



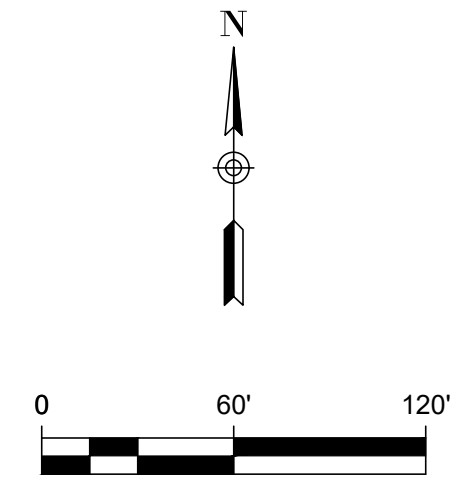
R7-1R
(MODIFIED)



R7-1
(MODIFIED)

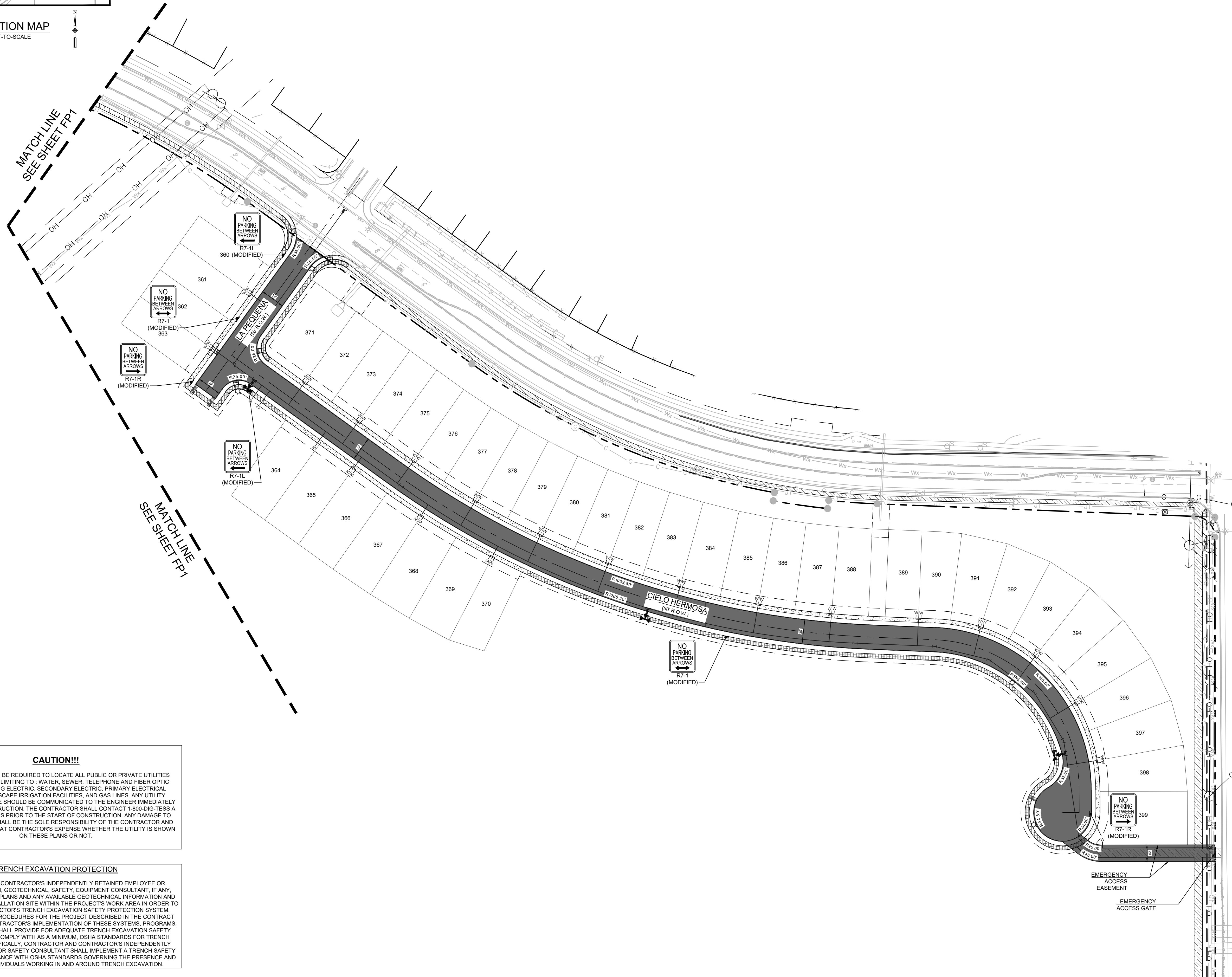


R7-1L
(MODIFIED)



LEGEND (FIRE ACCESS)

	PROJECT LIMITS
	PROPOSED WATER
	FIRE HYDRANT
	PROPOSED 3/4" SINGLE SERVICE WITH 5/8" METER
	PROPOSED 1" DUAL SERVICE WITH 5/8" METER
	STREET LIGHT
	FIRE ACCESS LANE (DRIVEABLE)



MATCH LINE
SEE SHEET FP1

MATCH LINE
SEE SHEET FP1

CAUTION!!!

CONTRACTOR SHALL BE REQUIRED TO LOCATE ALL PUBLIC OR PRIVATE UTILITIES INCLUDING BUT NOT LIMITING TO: WATER, SEWER, TELEPHONE AND FIBER OPTIC LINES, SITE LIGHTING ELECTRIC, SECONDARY ELECTRIC, PRIMARY ELECTRICAL DUCTBANKS, LANDSCAPE IRRIGATION FACILITIES, AND GAS LINES. ANY UTILITY CONFLICTS THAT ARISE SHOULD BE COMMUNICATED TO THE ENGINEER IMMEDIATELY AND PRIOR TO CONSTRUCTION. THE CONTRACTOR SHALL CONTACT 1-800-DIG-TESS A MINIMUM OF 48 HOURS PRIOR TO THE START OF CONSTRUCTION. ANY DAMAGE TO EXISTING UTILITIES SHALL BE THE SOLE RESPONSIBILITY OF THE CONTRACTOR AND THE REPAIR SHALL BE AT CONTRACTOR'S EXPENSE WHETHER THE UTILITY IS SHOWN ON THESE PLANS OR NOT.

TRENCH EXCAVATION PROTECTION

CONTRACTOR AND CONTRACTOR'S INDEPENDENTLY RETAINED EMPLOYEE OR STRUCTURAL DESIGN, GEOTECHNICAL, SAFETY, EQUIPMENT CONSULTANT, IF ANY, SHALL REVIEW THESE PLANS AND ANY AVAILABLE GEOTECHNICAL INFORMATION AND THE ANTICIPATED INSTALLATION SITE WITHIN THE PROJECT'S WORK AREA IN ORDER TO IMPLEMENT CONTRACTOR'S TRENCH EXCAVATION SAFETY PROTECTION SYSTEM. PROGRAMS AND/OR PROCEDURES FOR THE PROJECT DESCRIBED IN THE CONTRACT DOCUMENTS. THE CONTRACTOR'S IMPLEMENTATION OF THESE SYSTEMS, PROGRAMS, AND PROCEDURES SHALL PROVIDE FOR ADEQUATE TRENCH EXCAVATION SAFETY PROTECTION THAT COMPLY WITH AS A MINIMUM, OSHA STANDARDS FOR TRENCH EXCAVATIONS SPECIFICALLY, CONTRACTOR AND CONTRACTOR'S INDEPENDENTLY RETAINED EMPLOYEE OR SAFETY CONSULTANT SHALL IMPLEMENT A TRENCH SAFETY PROGRAM IN ACCORDANCE WITH OSHA STANDARDS GOVERNING THE PRESENCE AND ACTIVITIES OF INDIVIDUALS WORKING IN AND AROUND TRENCH EXCAVATION.

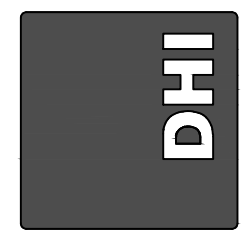
SIGNAGE NOTES:

1. INSTALL CUSTOM SIGNS AT DEAD ENDS OF SIDEWALKS PER CITY OF SANTA FE (C.O.S.F.) DIRECTIONS. SIGNS TO BE BLUE WITH WHITE LETTERING. "ACCESSIBLE ROUTE ENDS AHEAD" OR "NO ACCESSIBLE ROUTE."
2. EMERGENCY ACCESS VEHICULAR PIPE GATE EQUIPPED WITH KNOX BOX RESTRICTED ENTRY SYSTEM. GATE SHALL COMPLY WITH IF C 2009 SECTION D103.5 - FIRE APPARATUS ACCESS ROAD GATES. INSTALL REFLECTIVE SIGN ON GATE FOR VISIBILITY TO SUBDIVISION.
3. INSTALL NO PARKING SIGNS PER MUTCD SECTION 2B.44. PLACEMENT OF PARKING, STOPPING AND STANDING SIGNS. AT LEAST THREE NO PARKING SIGNS ON EACH STREET WHERE THERE IS NO PARKING. ONE SIGN AT THE BEGINNING OF ROAD THAT STATES "NO PARKING BETWEEN ARROWS" WITH AN ARROW BELOW POINTING DOWN THE SIDE WHERE PARKING IS NOT ALLOWED. ONE IN THE MIDDLE OF THE BLOCK THAT ALSO SAYS "NO PARKING BETWEEN ARROWS" WITH ARROWS POINTING IN BOTH DIRECTIONS AND ONE AT THE FAR END OF THE STREET SAYING THE SAME THING WITH THE ARROW POINTING BACK DOWN THE STREET.

REV	DATE	DESCRIPTION



DHI Engineering, LLC.
4419 ANTELOPE LOOP EAST
SANTA FE, NM 87507
(505) 424-2988 | dhiengineering.com
TBPE REG. NO. F-195661



VISTA DE LA SIERRA SUBDIVISION - PHASE 3
SANTA FE, NM
FIRE ACCESS PLAN

DESIGNED BY:	SQV
DRAWN BY:	SQV
DATE:	8/4/2025
JOB NO.:	05004
SHEET NO.:	FP2