

**YOUTH COMMUNITY VIOLENCE
INTERRUPTION (YCVI) PILOT
CITY OF SANTA FE
COUNTY OF SANTA FE**

**CITY OF SANTA FE
QUALITY OF LIFE COMMITTEE
NOVEMBER 5, 2025**



WHAT IS YCVI?

A COLLABORATION BETWEEN
THE CITY OF SANTA FE,
SANTA FE COUNTY &
COMMITTED COMMUNITY MEMBERS

YCVI **centers** the voices of both youth and their families, while providing resources to support their future, a life without violence, understanding those most impacted are the experts in their own lives.

The Task Force consists of five dedicated members with lived experience and expertise. These members work side-by-side with the youth referred, to identify the best path forward to ensure a successful life.

Commitment to self and community, respecting the power of each participant to heal themselves with participant driven goals is at the center of our mission.

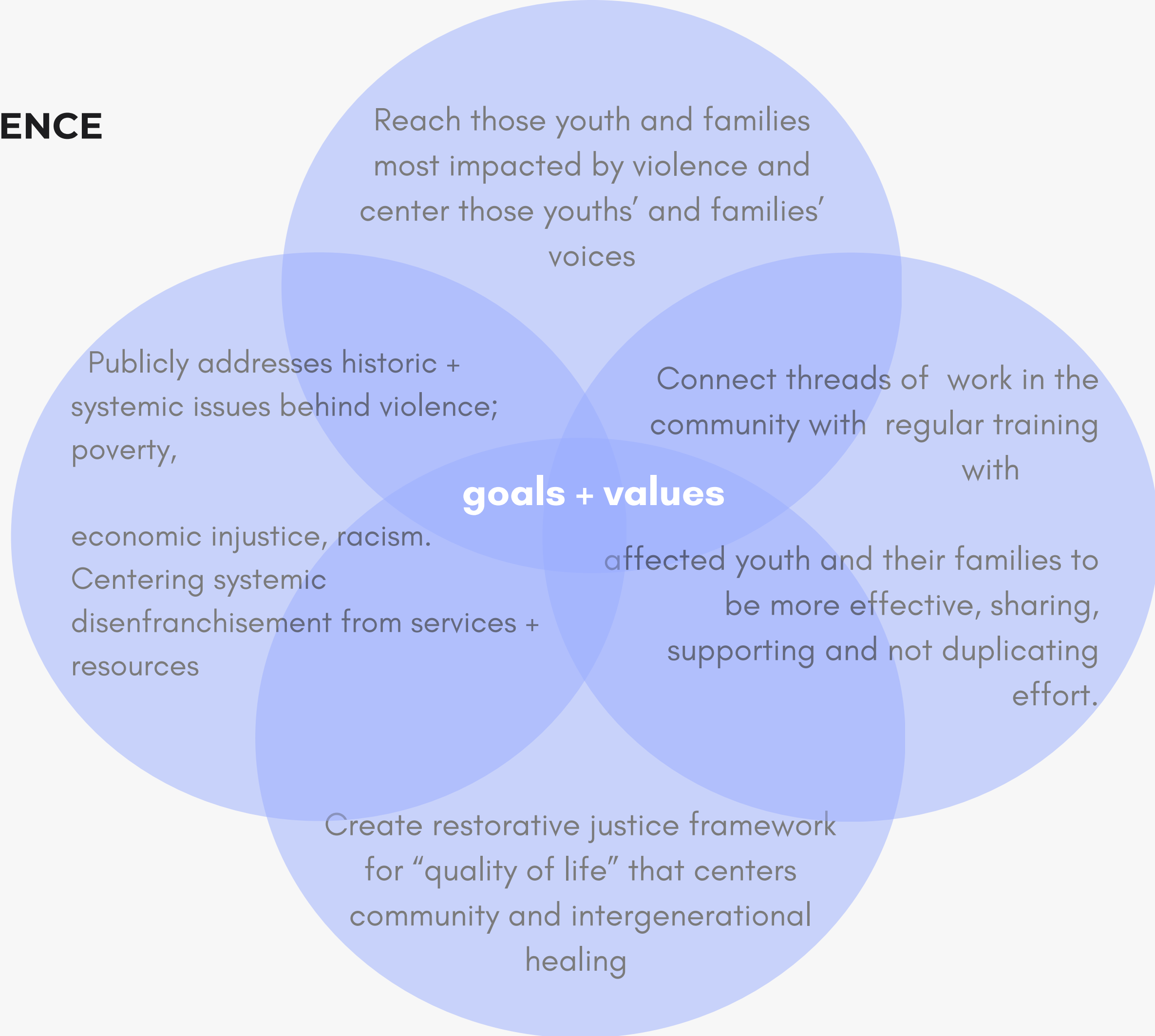
CITY STRATEGY FOR YOUTH VIOLENCE

City of Santa Fe Violence Prevention Strategic Plan- Critical Priority Objective 2

To educate, navigate, and employ youth at high risk for violence and establish a sustainable program to reduce youth gun and gang/group violence.

The pilot should:

- **credibly** reach youth at high risk for violent victimization or perpetration;
- **saturate participants in protective factors** that reduce their risk for violence, and
- **build participants' capacity** to serve as community support workers equipped to contribute to community violence prevention over time.



GROUNDING PRINCIPLES

Foster a non-judgmental, trusting atmosphere that supports our youth in the community

**Value + center the voices of youth + families
transparency + honesty
collaboration + accountability + cultural sensitivity**

Measurable outcomes to support our ongoing learning + contribute to the overall success of the community

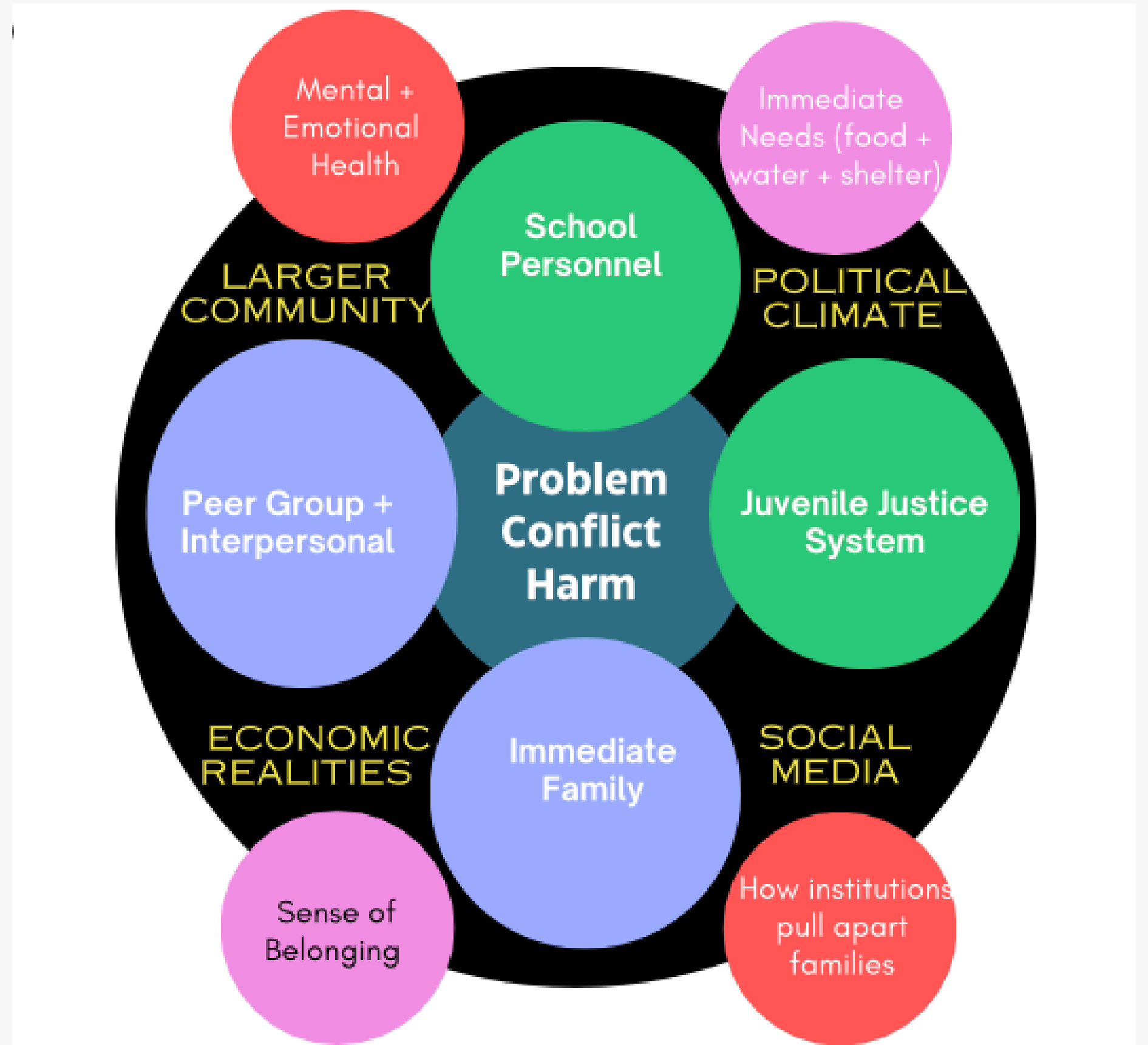
Celebrate successes + proactively engage our network of community providers to collectively work together

RESTORATIVE JUSTICE VALUES

Social Determinants of Health

Social Ecosystems

Macro Social Realities

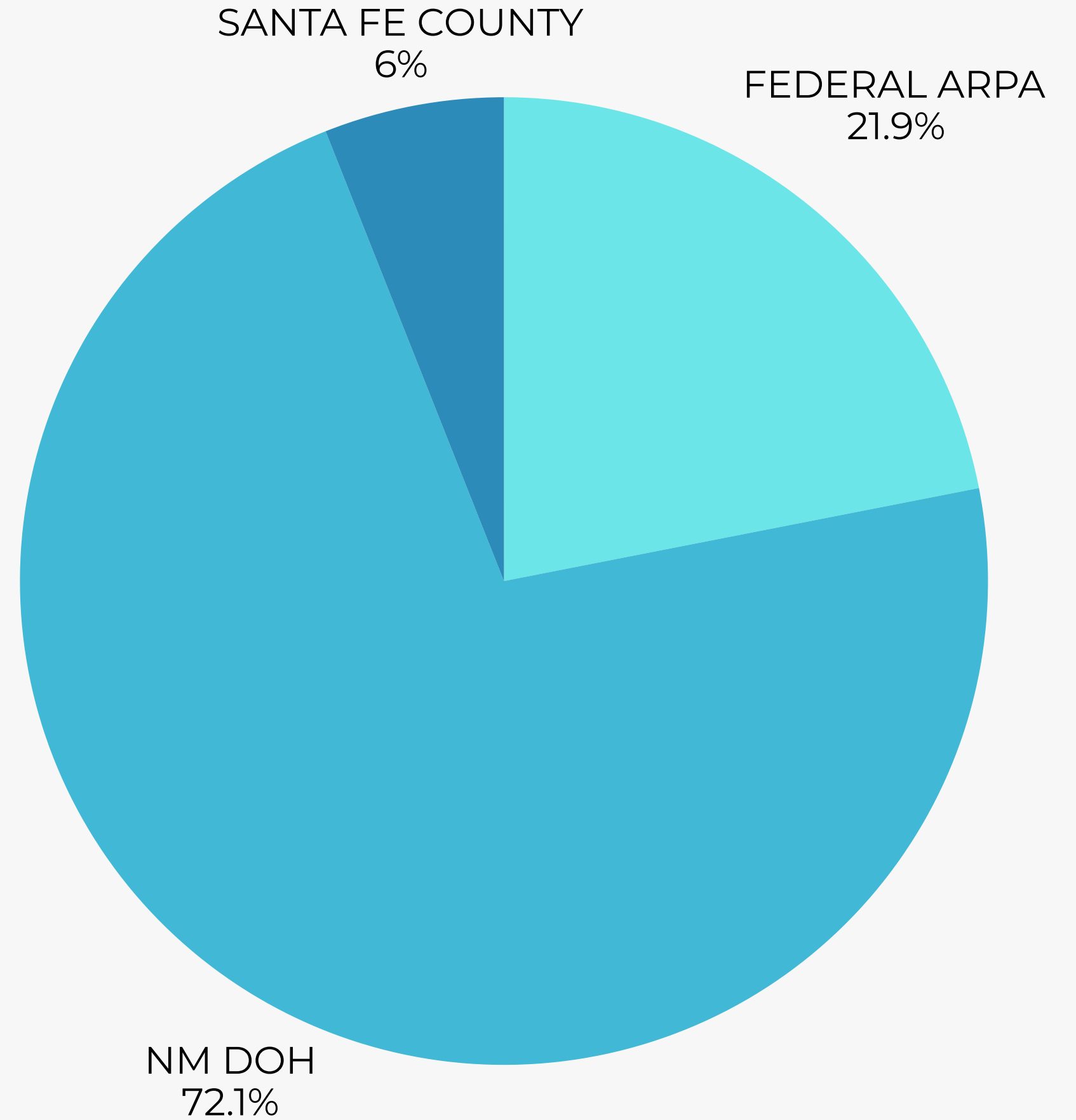


COMMUNITY FUNDING SOURCES

NM Department of Health \$1.2 million

Federal ARPA \$365K

Santa Fe County \$100K*

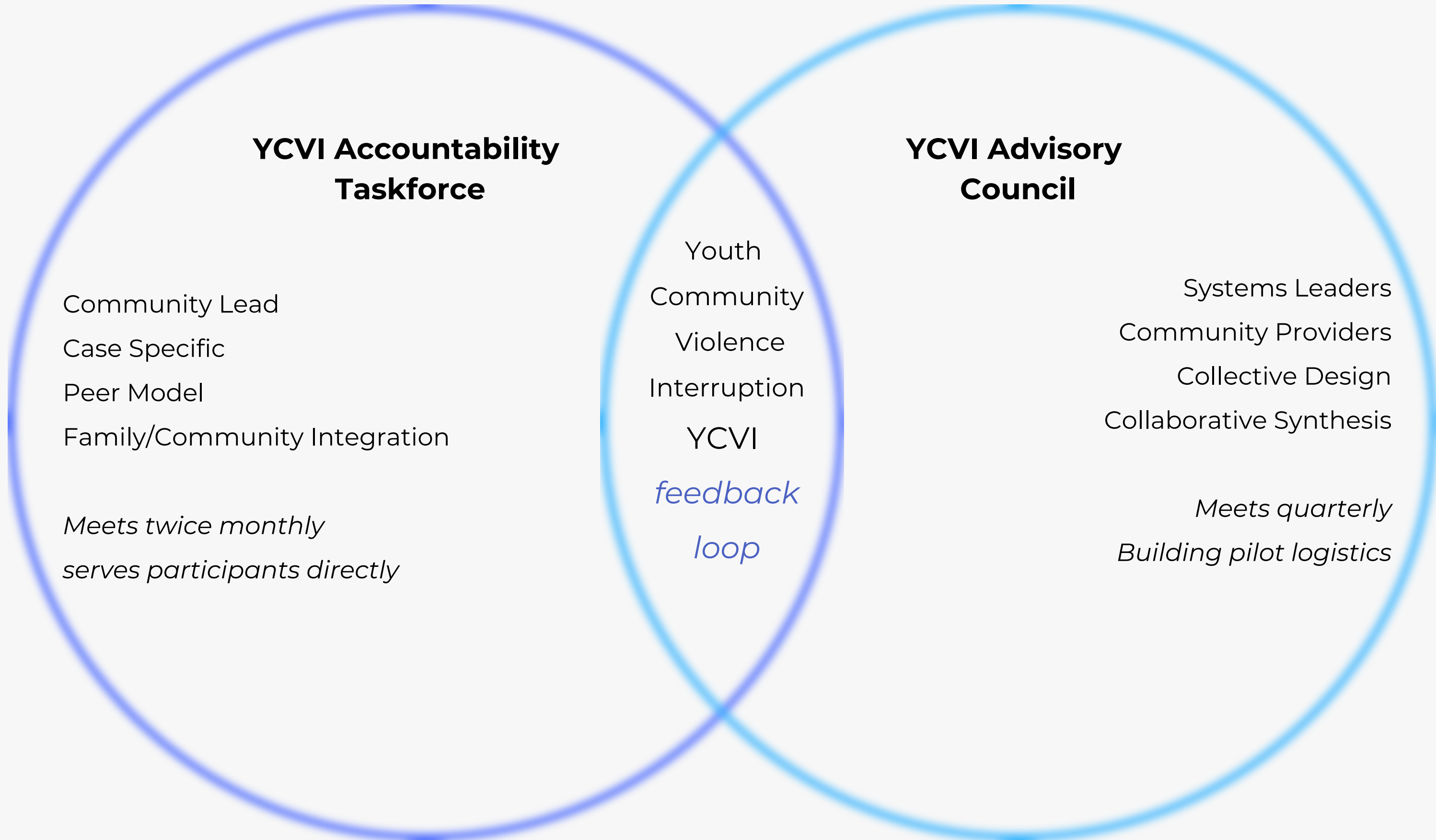


*Annual commitment established via VPU MOU in 2022

FUNDED PARTNERS IN YOUTH COMMUNITY VIOLENCE INTERRUPTION + PREVENTION



- Academy for Technology and Classics: Mountain Club
- New Mexicans to Prevent Gun Violence
- SFPS WAVE Mural Project
- SFPS PIE: Wellness Ambassadors Program
- SFPS Restorative Justice Program
- Resolve NM
- Communities in Schools
- Santa Fe Community Yoga Center
- Girls Inc. of Santa Fe
- Gerard's House
- YouthWorks
- TeamBuilders
- Rio Grande - Community Educators Network
- Santa Fe Prep Breakthrough Program
- The Sky Center
- Santa Fe Recovery Center
- La Fonda Foundation
- SFPS Community Schools
- Innovate Educate
- Domestic Violence Specialist, LLC (Clinical Development Consultant)
- Elizabeth C. Silva, LLC (YCVI Pilot Consultant)



YCVI Accountability Taskforce

Community Lead
Case Specific
Peer Model
Family/Community Integration

*Meets twice monthly
serves participants directly*

YCVI Advisory Council

Systems Leaders
Community Providers
Collective Design
Collaborative Synthesis

*Meets quarterly
Building pilot logistics*

Youth
Community
Violence
Interruption

YCVI
*feedback
loop*

ELIGIBILITY CRITERIA

The Youth Community Violence Interruption Pilot serves youth at high risk for involvement in violent incidents including victimization, perpetration, interpersonal or weapon based violence. Referrals for the YCVI Pilot are accepted from the Juvenile Probation Office, the First Judicial District Attorney's Office, and approved community providers.

Youth up to the age of 24 are eligible to participate in the pilot under the following conditions:

- History of violence**
- Social referral for violence interruption**
- Potential threat of retaliation**

Cases are deemed appropriate by the referring agency, the YCVI Taskforce, the Case Manager, or the Program Manager. For youth participants under the age of 14 parents/guardian must agree on behalf of youth participant, over the age of 14 both parents/guardian and the youth must agree to participate.



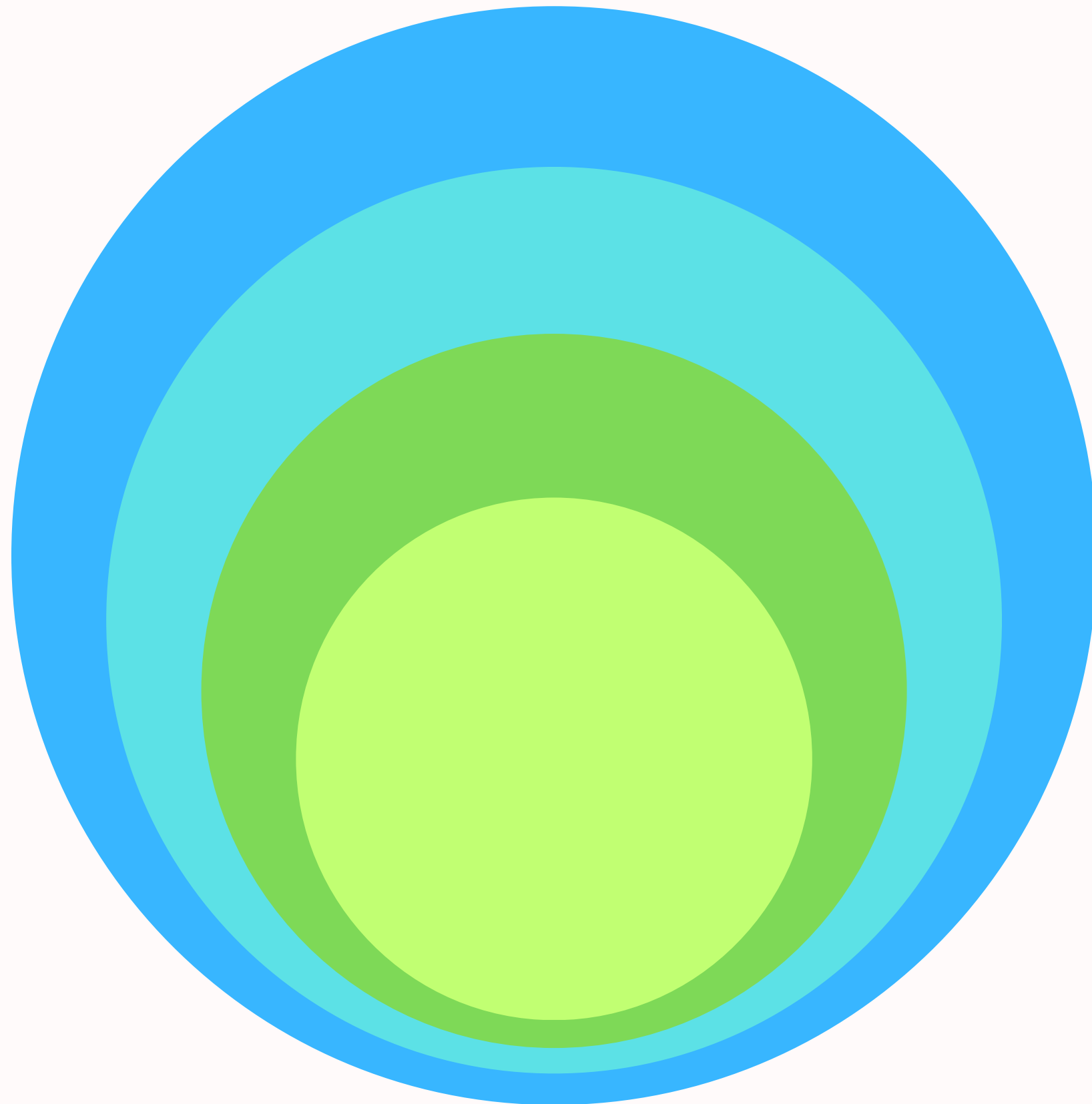
JUSTICE SYSTEM PARTNERSHIP

In partnership with the county and Uplift Youth, an IGA (Intergovernmental Agreement) has been executed with the First Judicial District Attorney's Office for youth referrals into the Youth Community Violence Interruption Pilot.

JPO/CYFD PARTNERSHIP

We are currently in conversation with CYFD leadership to secure a referral pathway into the Youth Community Violence Interruption Pilot.

YCVI ECOLOGICAL SYSTEM



Internal Motivators

- Belief system + Values + Interests + skills
- Mental health + self efficacy skills (coping with stress)
- Sense of self/identity + sense of belonging (cultural, athletic, peer)
- Life goals
- Relational Skills
- Sense of responsibility (familial, economic, peer)
- Sense of forgiveness

Immediate Supports

- family, mentors, coaches, teachers, older peers
- bystander support
- Trustworthy adults
- peer groups
- therapy
- clubs,/activities
- Social Determinants of Health

Community Contribution

- subsidies (food, housing, childcare, clothing)
- scholarships/internships
- networks (social, economic)
- physical spaces (public spaces)
- social cohesion in neighborhood, schools, community centers

Economic Justice + Sustainability

- workforce development
- job security
- vocational opportunities
- long term economic planning
- growth opportunities
- community revitalization (infrastructure/improvement)

FAITH-BASED COMMUNITIES

Faith-Based Counseling Services, Youth Specific Outreach or Groups.

- Christian Life
- Blaze Church
- Santa Maria De La Paz Church
- San Isidro Church

COMMUNITY/MENTORSHIP

Mentorship Programs, Peer Support Groups, Community Service Opportunities, etc.

- Big Brothers/Big Sisters
- Moving Arts
- Gerards House
- Youthworks
- Innovate+Educate
- Wisefool
- NDI-NM
- SF Teen Center
- Boys and Girls Club
- Girls Inc
- Cracie Barra Santa Fe
- Planet Fitness

CULTURAL AND RECREATIONAL

Youth Center, Cultural Enrichment Opportunities, Community Integration, etc.

- Mountain Kids
- Mountanc Center
- Mountain Club
- GCCC - 4 Kids Fun
- Boys & Girls Club
- Tewa Roots
- Zen Center
- Alas de Agua Collaboration
- Resolve New Mexico
- Somos Un Pueblo Unida

SDOH NEEDS

- Santa Fe City/County CONNECT
- Youthworks
 - CONNECT
 - UNITE US

MENTAL HEALTH

Therapists, Counselors, Psychiatrists, Psychologists, Groups, Self-supports, etc.

- The Sky Center
- PMS
- Serna Solutions
- Team Builders
- Mountain Center
- Tierra Nueva
- NAMU
- ELLIE
- NM DWS
- The Peak

SUBSTANCE USE SUPPORTS

Outpatient, Inpatient, Support Groups, Programs, etc.

- Sky Center
- Mountain Center
- Team Builders
- TEEN Challenge
- Faith Communities
- Serenity Mesa (14+)
- The Friendship Club
- Peer Support Specialists

CRISIS/EMERGENCY SERVICES

Crisis hotlines, Mobile Crisis Response, Emergency Shelters, Runaway or Homeless Youth Shelters, Etc

- Youth Shelters
- Mobile Crisis 14+.
- The Trevor Project (Text Line-LGBTQ+)
- Emergency Room
- Peer to Peer Hotline
- 24/7 Hotline - Gerards House
- Domestic Violence (St. Elizabeth's, Esperanza)
- Reach NM
- Casa's (Non-court Appointed)

EDUCATION/ALTERNATIVE OPTIONS

Tutoring, Alternative School Options, School-Based Supports, GED, Etc.

- Youthwords
- SFCC
- HED - GED Program
- The Peak
- Pro Skills
- NM One Stop Connections (NMDwS)
- E--cademy

VOCATIONAL/EMPLOYMENT

Job Readiness, Internships, Apprenticeships, Youth Employment Options, etc.

- Americorps
- Youthworks
- Rocky Mountain Youth Corps
- Innovate Educate Internships Connections
- NM Dept of Workforce Solutions
- Santa Fe Public Schools Work Based Learning

HOUSING ASSISTANCE

Shelters, Transitional Living, Supportive Housing, etc.

- Star Program
- Youthworks
- Consuelo's Place
- St. Elizabeth's
- Casa Hermosa
- Urban Alchemy
- CONNECT

FAMILY SUPPORT SERVICES

Parenting classes, Family Counseling, Parent Support Groups, etc.

- Youthworks
- SFCC
- Higher Education Department - GED
- The Peak
- Innovate Educate Pro Skills
- NM Connections
- E-Cademy (ABQ)
- Earthcare
- Grandparents Raising Grandchildren (Las Cumbres)

TRANSPORTATION

- Ride United
- Adam's Automotive (works directly with I+E)

NATIONAL

- National Resources/Legal/Liaison
- ChainBreakers
 - GoEducate.com

ASSET MAPPING

What services could the participants need?

NEXT STEPS

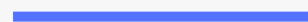
We are now accepting referrals

We are collectively designing interdependence in partnerships throughout the city/county to creatively braid funding streams

We are currently funded through FY26

The Department of Health is currently advocating for resources to continue this funding beyond FY26. We need your help in advocating for these lifesaving and life-changing programs as we head into City budget season.

THANK YOU



IN COMMUNITY