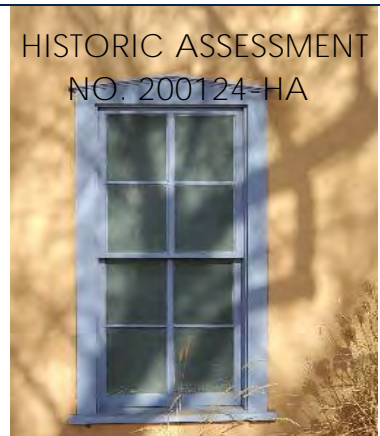


RPA & Associates, LLC.

PRESERVING OUR HISTORY

508 Ortega Rd NW Los Ranchos de Albuquerque, NM 87114
 P.O. Box 10328 Albuquerque, NM 87184
 505-379-7900
 rpahistoric@gmail.com

TO Martinez Architecture Studio PC
 1524 Paseo del Peralta
 Santa Fe, NM 87501
 studio@martinezarch.com



JOB	DATE
826 Camino del Poniente, Santa Fe, NM 87505	01/20/2024

LOCATION	DESCRIPTION
EAST	
A	33 x 40 DH 1/1 WHITE CLAD/PINE JELD-WEN
DR #1	37 x 82 LH INSWING DOOR
B	30 x 56 – 2 DH 1/1 WHITE CLAD/PINE JELD-WEN
SOUTH	
C	30 x 56 – 3 DH 1/1 WHITE CLAD/PINE JELD-WEN
DR #2	70 x 78 DOUBLE FRENCH DOORS LH INSWING DOOR 1-LT JELD-WEN 2000 SERIES
D	34 x 56 – 3 DH 1/1 WHITE CLAD/PINE JELD-WEN
E	34 x 56 – 2 DH 1/1 WHITE CLAD/PINE JELD-WEN
NORTH	
F	32 x 63 – GLASS BLOCK 4W8H 2002
WEST	
G	36 x 54 DH 1/1 WHITE CLAD/PINE ANDERSEN
SOUTH	
H	36 x 48 DH 1/1 WHITE CLAD/PINE ANDERSEN

In closing, my professional opinion is as follows:

Windows A, B, C, D, & E are non-historic. The windows are from a Jeld-Wen 2002 series.

Window F is a 4W8H glass block from the 2002 era, also non-historic.

Window G, H, I, J, K, & L are non-historic. The windows are from an Andersen 2003 series.

Doors 1, 2, 3, 4, & 5 are non-historic. The doors are from the 2000's (-/+), shop made, Therma-Tru and Simpson.

If you have any questions, please contact me at 505-379-7900.

Assessment prepared by: **Ra N. Patterson**

RPA & ASSOCIATES, LLC. | WINDOW & DOOR CONDITION AND INTEGRITY CODES

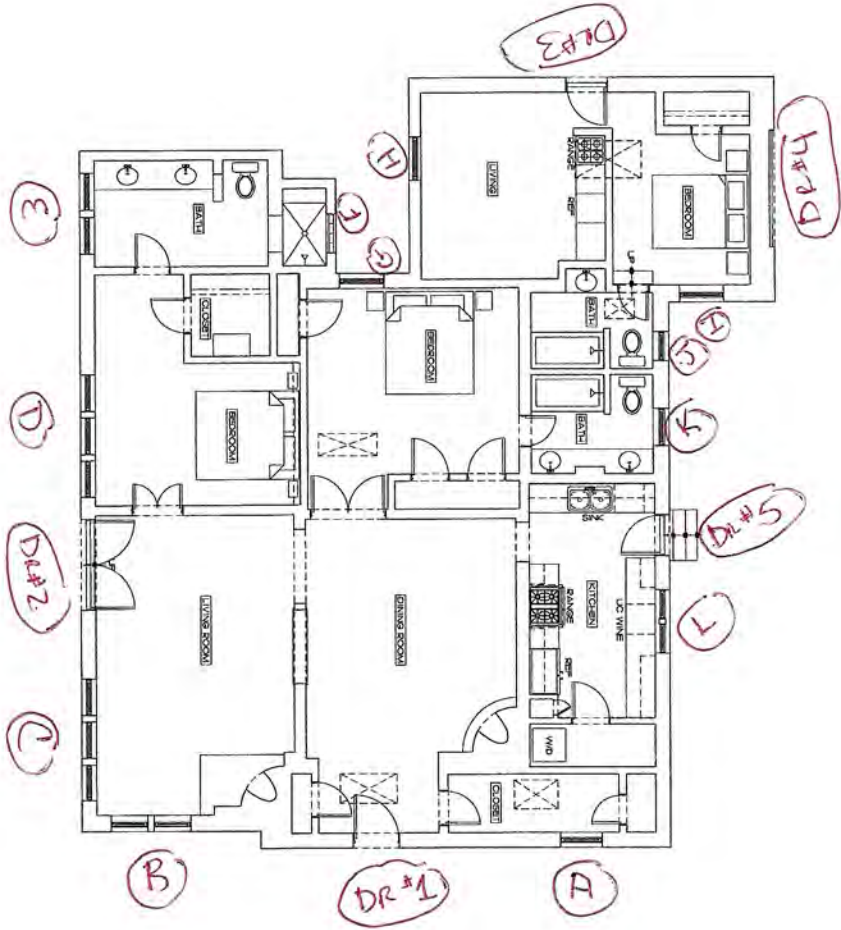
CODE	CONDITION AND INTEGRITY CODES
P = PREMIUM	EXTERIOR FINISHES AND SASH, FRAME, AND CASING MEMBER IN PREMIUM OR VERY GOOD CONDITION.
	PUTTY GLAZE INTACT.
	ONLY COSMETIC TOUCH-UP, IF NEEDED.
S = SATISFACTORY	EXTERIOR FINISHES FADING AND WORN IN PLACES BUT STILL ADHERED TO THE WINDOW MEMBERS.
	PUTTY GLAZING CRACKING BUT INTACT AND ALL SASHES, FRAMES, AND CASING MEMBER WITH LESS THAN 30% –
	40% DETERIORATION.
F = FAIR	EXTERIOR FINISHES HAVE CRACKED & PEELED. MISSING TO BARE SURFACE.
	PUTTY GLAZING CRACKING AND MISSING IN 30% – 40% OF THE SASHES. ALL SASHES, FRAMES, AND CASINGS HAVE
	SOME MEMBERS 30% – 40% COMPLETELY DETERIORATED.
U = UNSATISFACTORY	EXTERIOR FINISHES HAVE COMPLETELY DETERIORATED.
	PUTTY GLAZING MOSTLY MISSING. ALL SASHES, FRAMES, AND CASING MEMBERS HAVE MORE THAN 30% - 40%
	DETERIORATION, BEYOND REPAIR.

NOTES:

RPA & ASSOCIATES, LLC. | 826 CAMINO DEL PONIENTE, SANTA FE, NM 87505

LABEL	WINDOW & DOOR DESCRIPTION	CONDITION & INTERGRITY CODE	HISTORIC/NON-HISTORIC - AGE
A	33 x 40 DH 1/1 WHITE CLAD	S	NON-HISTORIC – 2002 JELD-WEN PRODUCT
DR #1	37 x 82 LH INSWING ENTRY DOOR	S	NON-HISTORIC – 2000 MACHINED DOOR W/MECHANICAL NAILS
B	30 x 56 – 2 DH 1/1 WHITE CLAD	S	NON-HISTORIC – 2002 JELD-WEN PRODUCT
C	30 x 56 – 3 DH 1/1 WHITE CLAD	S	NON-HISTORIC – 2002 JELD-WEN PRODUCT
DR # 2	70 x 78 DOUBLE DOOR LH INSWING 1-LT	S	NON-HISTORIC – 2002 JELD-WEN PRODUCT
D	34 x 56 – 3 1/1 WHITE CLAD	S	NON-HISTORIC – 2002 JELD-WEN PRODUCT
E	34 x 56 – 2 DH 1/1 WHITE CLAD	S	NON-HISTORIC – 2002 JELD-WEN PRODUCT
F	32 x 63 GLASS BLOCK 4W8H	S	NON-HISTORIC – 2002 PRODUCT
G	36 x 54 DH 1/1 WHITE CLAD	S	NON-HISTORIC – 2002 ANDERSEN PRODUCT
H	36 x 48 DH 1/1 WHITE CLAD	S	NON-HISTORIC – 2002 ANDERSEN PRODUCT
DR #3	32 x 80 LH INSWING FIBERGLASS DOOR – GRILLES 3W5H THERMA-TRU	S	NON-HISTORIC – 2003 THERMA-TRU FIBERGLASS DOOR
DR #4	100 x 85 WOOD T&G V-GROOVE STORAGE DOOR	S	NON-HISTORIC – 2002 PRODUCT
I	36 x 36 DH 1/1 WHITE CLAD	S	NON-HISTORIC – 2003 ANDERSEN PRODUCT
J	28 x 36 DH 1/1 WHITE CLAD	S	NON-HISTORIC – 2003 ANDERSEN PRODUCT
K	32 x 36 DH 1/1 WHITE CLAD	S	NON-HISTORIC – 2003 ANDERSEN PRODUCT
DR #5	33 x 80 LH INSWING DOOR 2W2H/T&G V-GROOVE WHITE CLAD	S	NON-HISTORIC – 2012 MACHINED DOOR W/MECHANICAL NAILS
L	28 x 36 – 2 DH 1/1 WHITE CLAD	S	NON-HISTORIC – 2003 ANDERSEN PRODUCT

NOTES:



1. EXISTING FLOOR PLAN
 1/4" = 1'-0" NORTH



SET #
 2312 - COLTON-MCCOY

A
 2.0

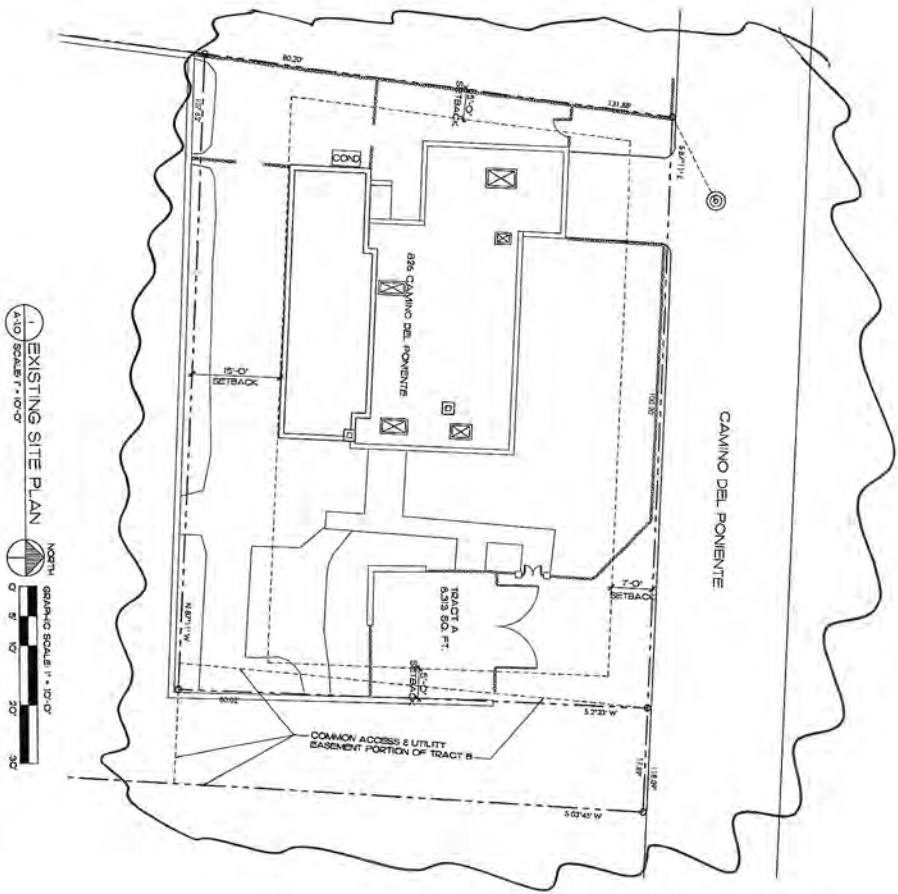
EXISTING FLOOR PLAN

JANUARY 17, 2024

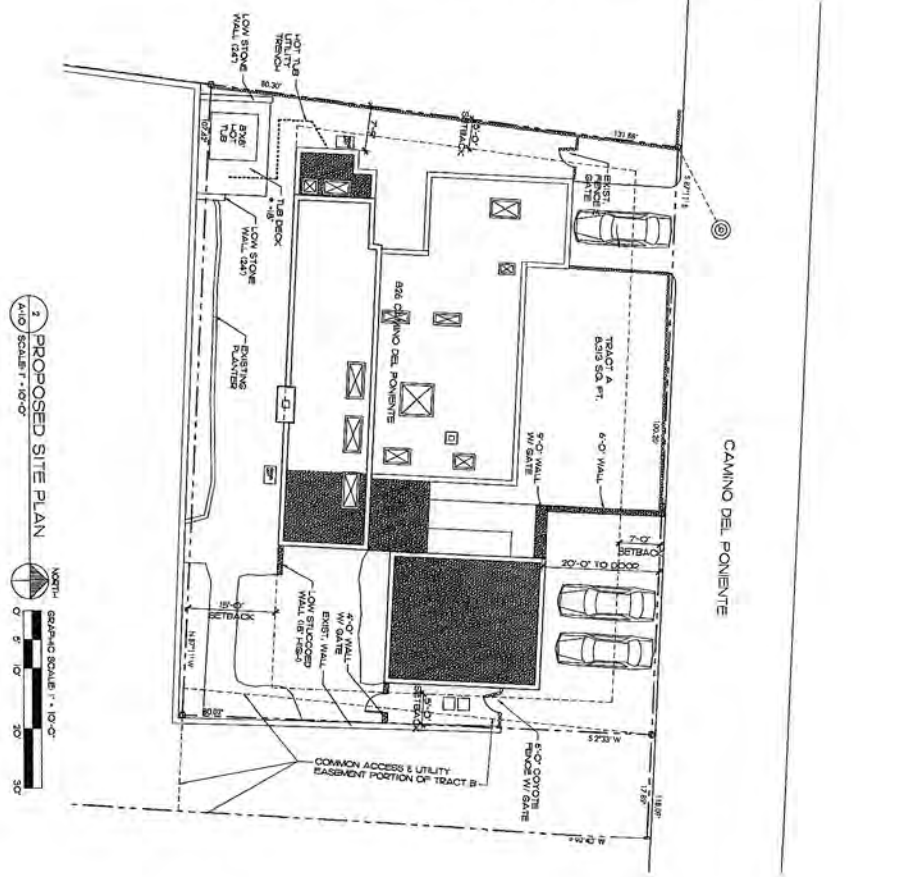
COLTON-MCCOY
 826 CAMINO DEL PONIENTE
 SANTA FE, NEW MEXICO

MARTINEZ ARCHITECTURE STUDIO PC

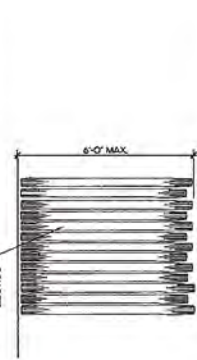
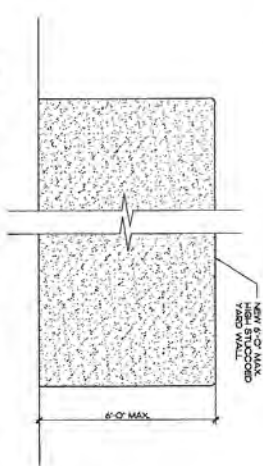
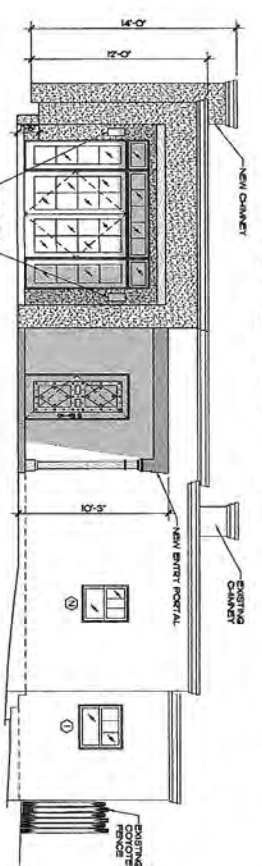
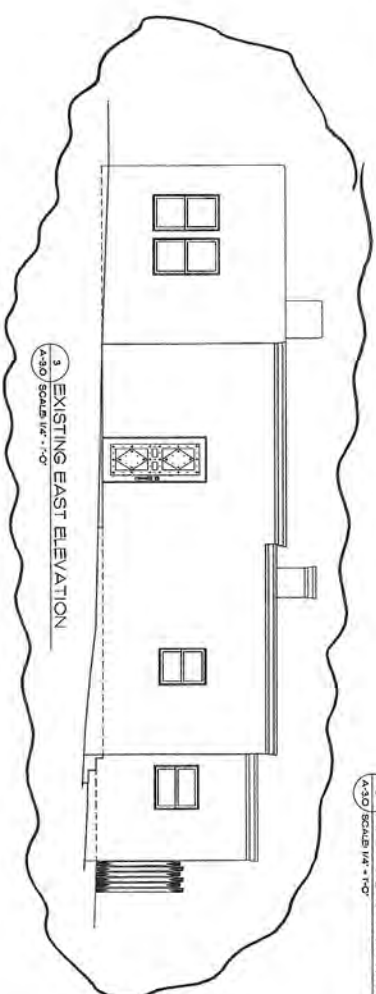
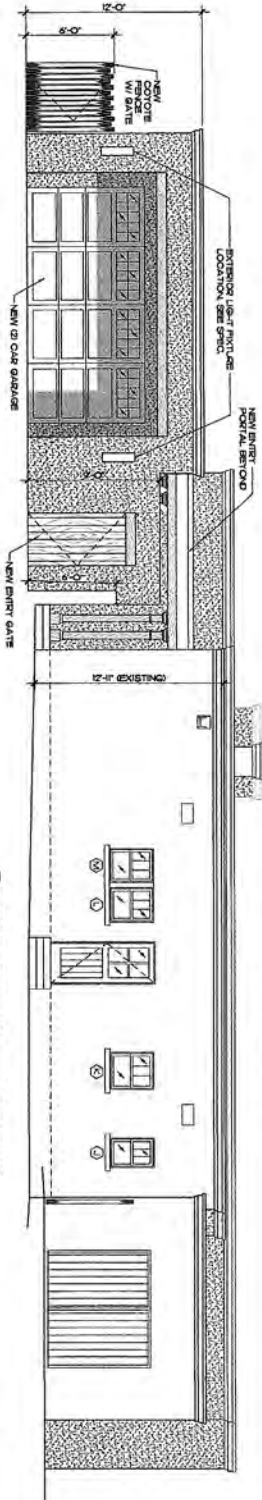
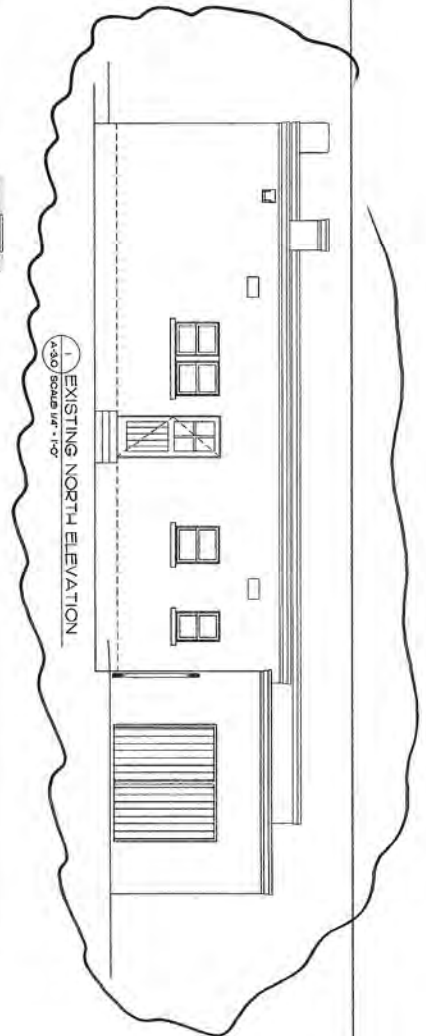
1524 PASO DE PERALTA, SANTA FE
 505-589-4958 studio@martinezarch.com

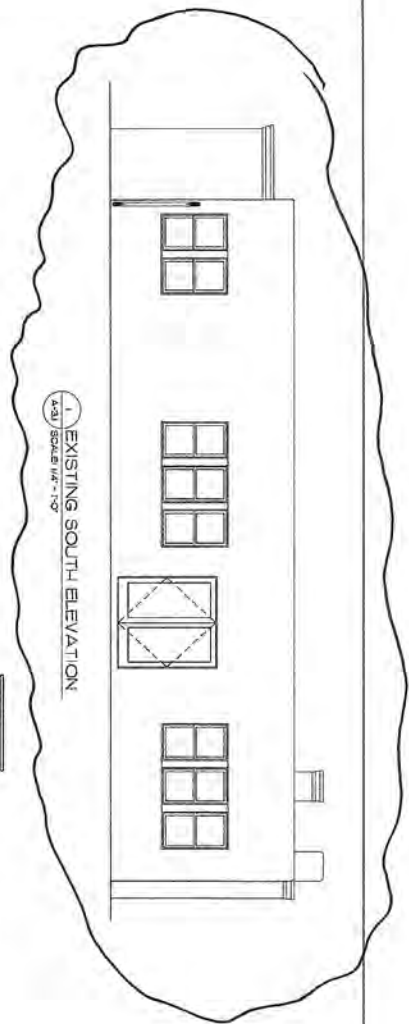


1. EXISTING SITE PLAN
 4:10 SCALE: 1" = 10'-0"
 NORTH GRAPHIC SCALE: 1" = 10'-0"
 0 5' 10' 20' 30'

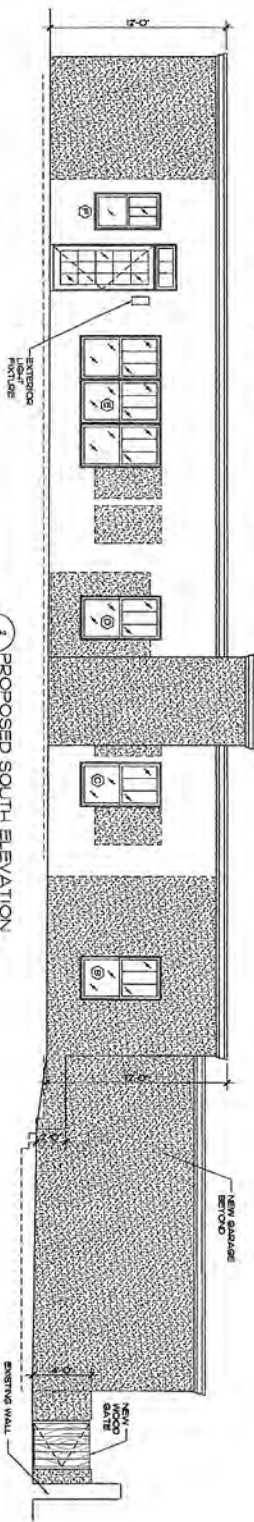


2. PROPOSED SITE PLAN
 4:10 SCALE: 1" = 10'-0"
 NORTH GRAPHIC SCALE: 1" = 10'-0"
 0 5' 10' 20' 30'

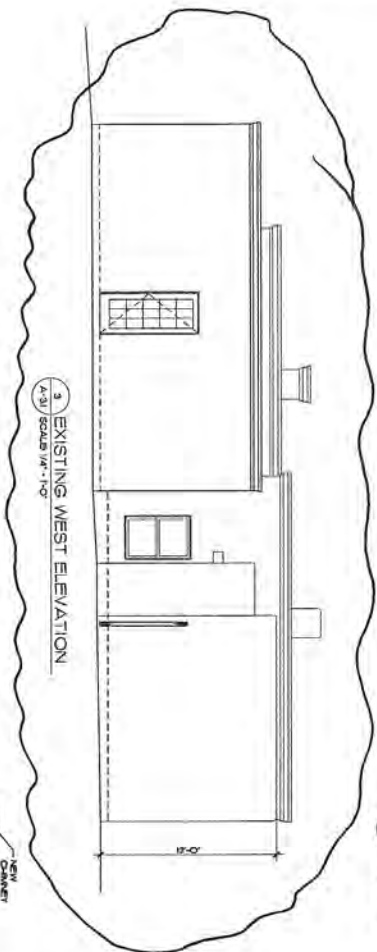




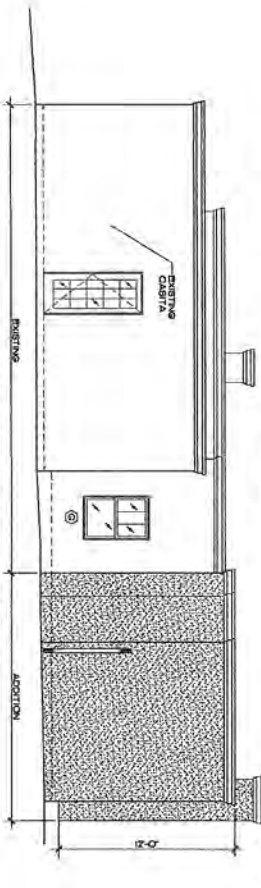
1 EXISTING SOUTH ELEVATION
A:31 / SCALE 1/4" = 1'-0"



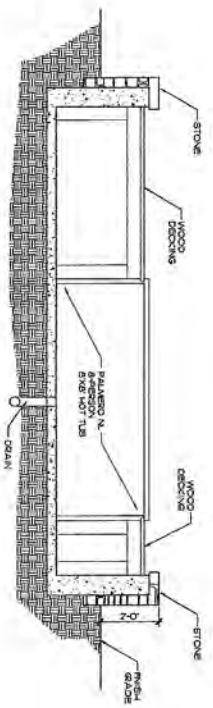
2 PROPOSED SOUTH ELEVATION
A:31 / SCALE 1/4" = 1'-0"



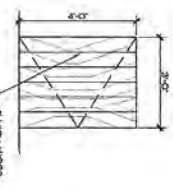
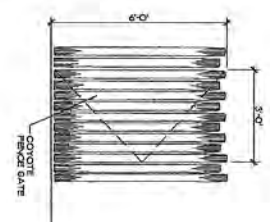
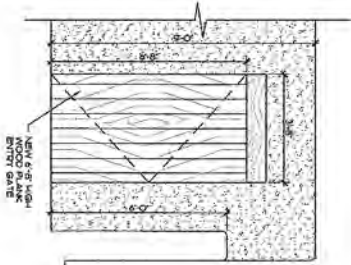
3 EXISTING WEST ELEVATION
A:31 / SCALE 1/4" = 1'-0"



4 PROPOSED WEST ELEVATION
A:31 / SCALE 1/4" = 1'-0"



5 HOT TUB SECTION
A:31 / SCALE 1/2" = 1'-0"



6 GATE ELEVATIONS
A:31 / SCALE 1/2" = 1'-0"



SCALE: 1/4" = 1'-0"
0 2 4 8
11

A
3.1

EXISTING & PROPOSED EXTERIOR ELEVATIONS, HOT TUB & GATE ELEVATIONS

JANUARY 17, 2024

COLTON-McCOY
826 CAMINO DEL PONIENTE
SANTA FE, NEW MEXICO

MARTINEZ ARCHITECTURE STUDIO PC
1624 PASEO DE PERALTA SANTA FE
505-999-4958 STUDIO@MARTINEZARCH.COM



East
Window
A





East
Door
#1



East
Window
B





South
Window
C



South
Door
#2



South
Window
D





South
Window
E

North
Window
F



West
Window
G





South
Window
H

West
Door
#3



North
Door
#4



East
Window
I



North
Window
J



North
Window
K



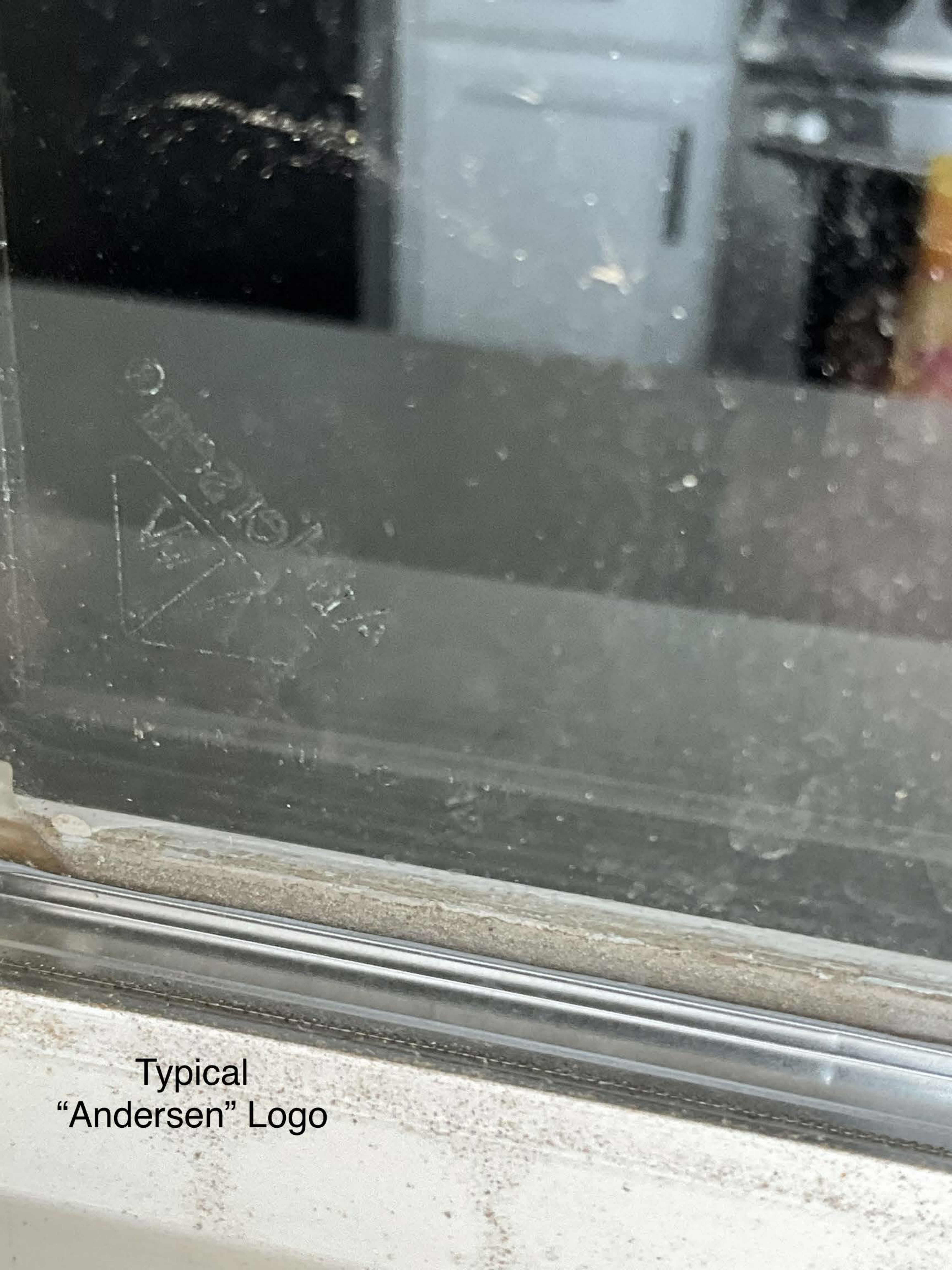


North
Window
Door
#5

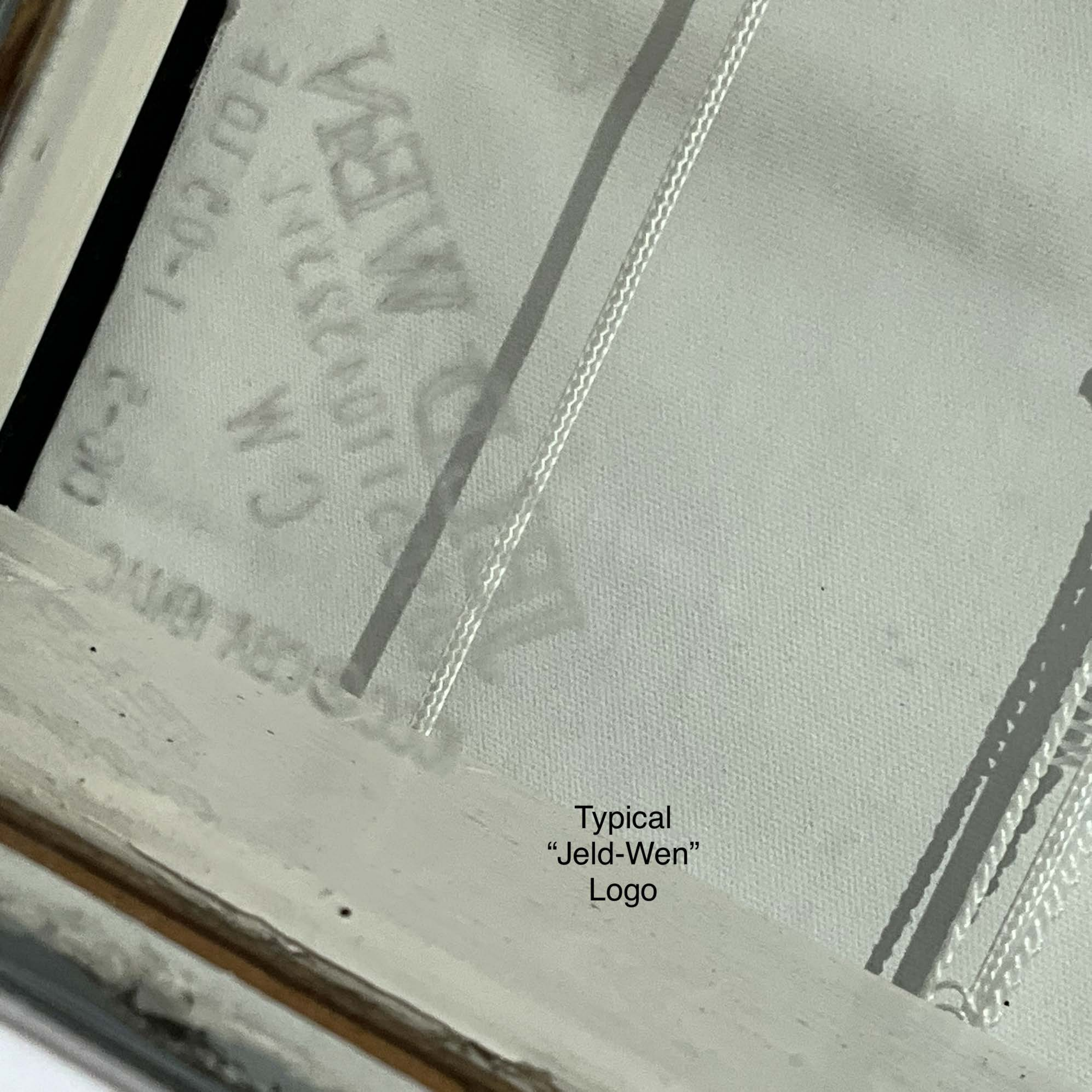




North
Window
L



Typical
"Andersen" Logo



Typical
"Jeld-Wen"
Logo