

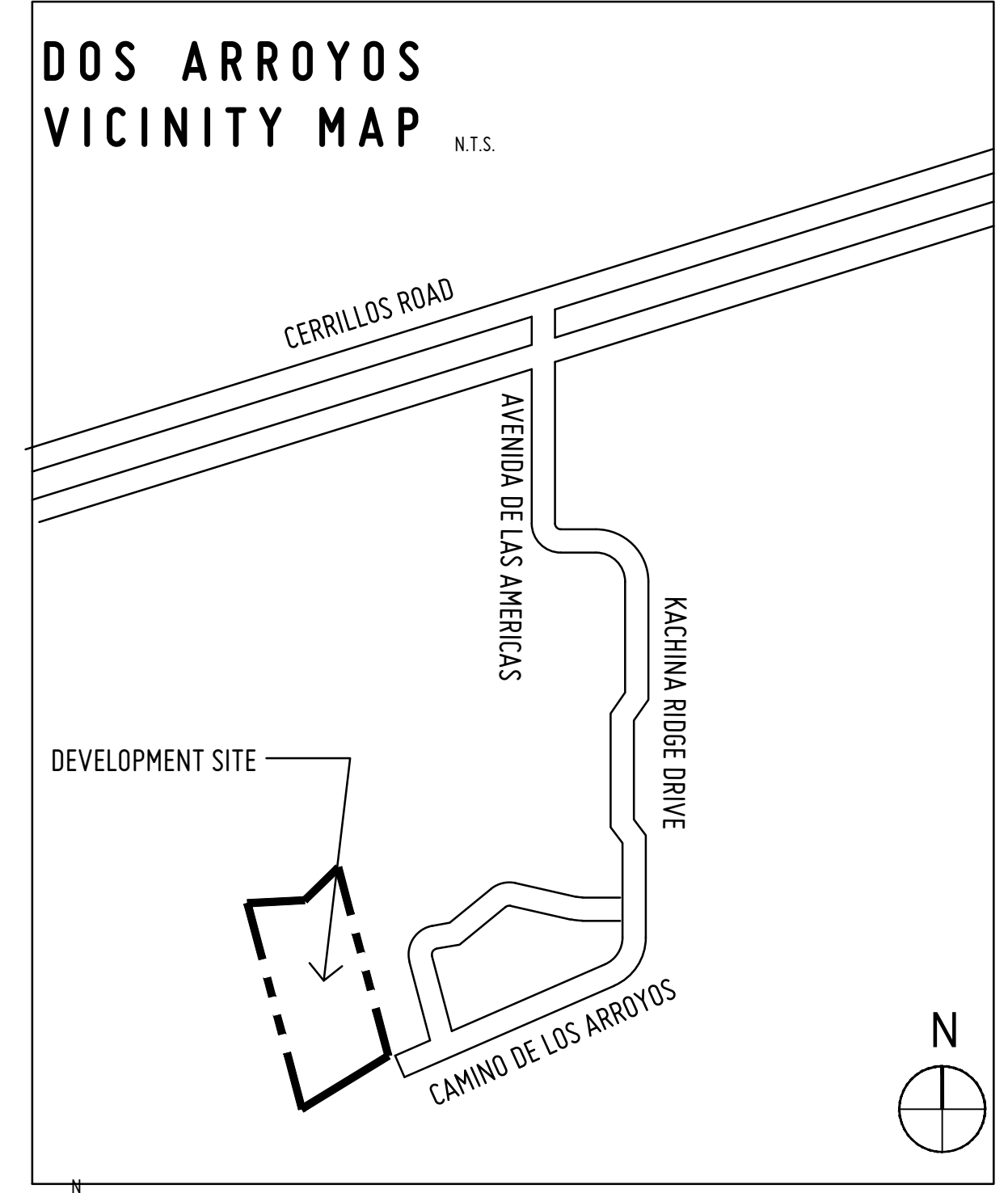


SITE KEY:

- NEW BUILDINGS
- EXISTING BUILDINGS
- NEW CONCRETE SIDEWALKS ADA PARKING AND/OR PATIOS, 2% MAX. CROSS SLOPE
- NEW ASPHALT, SEE CIVIL
- ADA ACCESSIBLE ROUTE
- NEW PHYSICALLY ACCESSIBLE DWELLING UNIT
- NEW HEARING/VISION ACCESSIBLE DWELLING UNIT
- NEW ADA ACCESSIBLE PARKING SPACE
- NEW FIRE HYDRANT
- NEW SITE LIGHTING

KEY NOTES:

- 1 PROPERTY LINE
- 2E EXISTING FENCE OR YARDWALL
- 3E EXISTING UTILITY EASEMENT
- 4E EXISTING ASPHALT DRIVE AND PARKING
- 5E EXISTING BUILDING
- 6 10' D TRAIL EASEMENT
- 7 APARTMENT BUILDING, 2 STORY
- 8 DRIVE AND PARKING AREA, ASPHALT. SITE PARKING SPACES "STANDARD" 8'4" X 18'0"
- 9 ACCESSIBLE PARKING AREA, CONCRETE. SITE PARKING SPACES "STANDARD" 8'4" X 18'0"
- 10 EXTEND CITY STREET WITH PARALLEL PARKING AND CONCRETE SIDEWALK
- 11 5'0" H. CMU YARD WALL W/ CAP BLOCK
- 12 SIDEWALK, CONCRETE
- 13 BICYCLE PARKING RACK
- 14 FIRE HYDRANT



1 | SITE PLAN
A_001

SCALE: 1" = 30'

8 OCTOBER 2025
DATE: 8 OCTOBER 2025
REVISION:
SHEET TITLE: SITE PLAN

DOS ARROYOS HOUSING
3000 CAMINO DE LOS ARROYOS, SANTA FE, NEW MEXICO 87501
THOMAS GIFFORD ARCHITECT
ARCHITECTURE URBAN DESIGN
17000 Paseo de los Arroyos, Santa Fe, New Mexico 87501
Tel: 505.820.5888 email: tgg@thomasgifford.com

A_001