



# MINUTES

BICYCLING AND PEDESTRIAN  
ADVISORY COMMITTEE  
NOVEMBER 14, 2024  
5:30 PM  
CITY HALL  
COUNCIL CHAMBERS, 201  
LINCOLN AVENUE  
SANTA FE

<https://www.youtube.com/watch?v=NTzBrJQWEOk>

## 1. CALL TO ORDER

The meeting was called to order at by Chair Michael Garcia at 5:41 pm.

## 2. ROLL CALL

### **Members Present:**

Chair Michael Garcia  
Member Erik Aaboe  
Member Angela Bordegaray  
Member Judith Gabriele  
Member Tony Gerlicz  
Member Steve Pilcher  
Member Ben Pingilley  
Member Gary Schiffmiller

### **Members Excused:**

None

### **Others Attending:**

Romella Glorioso-Moss, Staff Liaison  
Lucrecia Diaz, Clerk

## 3. APPROVAL OF AGENDA

- a. **Motion:** Member Pilcher moved, seconded by Member Bordegaray to approve the Agenda as amended.

**Amendments:** Moved to remove Agenda item 4.a, and 6.a & move item 7.c to 7.a

**Vote:** The motion was approved on the following Roll Call:



City of Santa Fe

# MINUTES

BICYCLING AND PEDESTRIAN  
ADVISORY COMMITTEE  
NOVEMBER 14, 2024  
5:30 PM  
CITY HALL  
COUNCIL CHAMBERS, 201  
LINCOLN AVENUE  
SANTA FE

---

**For:** Member Aaboe, Member Bordegaray, Member Gabriele, Member Gerlicz, Member Pilcher, Member Pingilley, Member Schiffmiller, Chair Garcia

**Against:** None

**Abstain:** None

## 4. APPROVAL OF MINUTES

- a. Request for Approval of July 11, 2024 minutes.

REMOVED from the Agenda.

- b. Request for Approval of October 10, 2024 minutes.

**Motion:** Member Bordegaray moved, seconded by Member Gerlicz to approve the minutes as amended.

**Amendments:** Moved to add YouTube link in the minutes.

<https://www.youtube.com/watch?v=awUM9cyzGyE>

**Vote:** The motion was approved on the following Roll Call:

**For:** Member Aaboe, Member Bordegaray, Member Gerlicz, Member Pilcher, Member Pingilley, Member Schiffmiller, Chair Garcia

**Against:** None

**Abstain:** Member Gabriele



## MINUTES

### 5. COMMUNICATIONS FROM THE PUBLIC (maximum 2 minutes)

#### a. Irena Ossla, Galisteo Street

In 2017, I was a professional cyclist winning professional level races and on track for Olympics. Came to Santa Fe and on November 10, 2017 was biking in a bike lane and was hit by a vehicle. I was sent to the hospital and put in a coma for six days, two months in the hospital and over a million dollars of medical fees. It was an experience, and I am lucky to be standing here today and now I am trying to be a bike advocate. The driver wasn't insured and no registration and was given only a \$150.00 fine. Standing here today saying there needs to be an increase of penalties and increase the safety of pedestrians and bicyclists.

David Kriegshauser,

I have some positive things to say and some concerns. My step father was hit by a dual truck and in the hospital for six months very fortunate to live but the driver wasn't cited. I want to recognize Santa Fe for being awarded by the League American Bicyclists the Silver Level, as a bicycle friendly community for its efforts for better places to bike. Good on the City for that! In my experience the drivers are 99% courteous. The new additional around Falcon Way by the Community College is exemplary. The road up to the Ski basin, I would love for the City to widen that road.

### 6. COMMUNICATIONS FROM OTHER AGENCIES (maximum 5 minutes)

#### a. Safe Route to School (Ryan Harris, SRTS Coordinator)

REMOVED from the Agenda.

#### b. Santa Fe Metropolitan Planning Organization (Erick Aune, AICP, Director/ Leah Yngve, MSP, Senior Transportation Planner)



City of Santa Fe

# MINUTES

BICYCLING AND PEDESTRIAN  
ADVISORY COMMITTEE  
NOVEMBER 14, 2024  
5:30 PM  
CITY HALL  
COUNCIL CHAMBERS, 201  
LINCOLN AVENUE  
SANTA FE

c. Bike Santa Fe (Aria Chiodo, Board Member)

Having a winter social in January looking for volunteers and members of the council and committee members. Maintaining the trails and sidewalks for winter season, there are shady and patches that have ice and make it dangerous for pedestrians and bicyclists. From the discussion from the last meeting from the public there was an issue on safety for pedestrians, we feel signage would help inform people. World Day of Remembrance for road traffic victims November 17, 2024 and acknowledge many road traffic victims in particular two from this past year, Luis Kuros Bautista April 2024 and Nathan Grey in August 2023.

d. Public Safety Committee (Steve Pilcher, BPAC Vice Chair)

## 7. DISCUSSION AND POSSIBLE ACTION ITEMS

a. Request for Approval of BPAC Meeting Dates in 2025 (Romella Glorioso-Moss, Staff Liaison)

**Motion:** Member Pilcher moved, seconded by Member Gabriele to approve BPAC meeting dates in 2025.

**Vote:** The motion was approved on the following Roll Call:

**For:** Member Aaboe, Member Bordegaray, Member Gabriele, Member Gerlicz, Member Pilcher, Member Pingilley, Member Schiffmiller, Chair Garcia

**Against:** None

**Abstain:** None

b. Recommended SFMPO Projects Prioritized for Funding Applications in 2025 (Leah Yngve, SFMPO Senior Transportation Planner)

BICYCLE AND PEDESTRIAN  
ADVISORY COMMITTEE MEETING  
Thursday, November 14, 2024



# MINUTES

BICYCLING AND PEDESTRIAN  
ADVISORY COMMITTEE  
NOVEMBER 14, 2024  
5:30 PM  
CITY HALL  
COUNCIL CHAMBERS, 201  
LINCOLN AVENUE  
SANTA FE

---

**Motion:** Member Bordegaray moved, seconded by Member Schiffmiller to approve the Agenda as amended.

**Amendments:** Moved 7.b up on the Discussion and Possible Action Items

**Vote:** The motion was approved on the following Roll Call:

**For:** Member Aaboe, Member Bordegaray, Member Gabriele, Member Gerlicz, Member Pilcher, Member Pingilley, Member Schiffmiller, Chair Garcia

**Against:** None

**Abstain:** None

**Motion:** Member Gerlicz moved, seconded by Member Bordegaray for BPAC to support the SFMPO list as we have heard here tonight.

**Vote:** The motion was approved on the following Roll Call:

**For:** Member Aaboe, Member Bordegaray, Member Gabriele, Member Gerlicz, Member Pilcher, Member Pingilley, Member Schiffmiller, Chair Garcia

**Against:** None

**Abstain:** None

SEE APPENDIX A FOR THE PPT PRESENTATION

- c. St. Michael's Drive/Llano St. Intersection Improvements Project 100% Design (Richard Rotto, PE, AECOM)



City of Santa Fe

# MINUTES

BICYCLING AND PEDESTRIAN  
ADVISORY COMMITTEE  
NOVEMBER 14, 2024  
5:30 PM  
CITY HALL  
COUNCIL CHAMBERS, 201  
LINCOLN AVENUE  
SANTA FE

---

SEE APPENDIX B FOR THE PPT PRESENTATION

- d. BPAC Spring 2024 Survey Results (Judith Gabriele, Promotions, Education and Communications Subcommittee Chair)

**Motion:** Member Gerlicz moved, seconded by Member Gabriele to have the BPAC committee prepare a presentation incorporating data and any other data we can master to the Public Works and Utilities Committee, Mayor's Committee on Disability, Planning Commission, and SFMPO Policy Board highlighting what the public has identified to us, needs attention.

**Vote:** The vote was approved on the following Roll Call:

**For:** Member Aaboe, Member Bordegaray, Member Gabriele, Member Gerlicz, Member Pilcher, Member Pingilley, Member Schiffmiller, Chair Garcia

**Against:** None

**Abstain:** None

SEE APPENDIX C FOR THE PPT PRESENTATION

- e. Decisions Made Regarding BPAC Recommendations on 90% Bishop's Lodge Road Project and 30% Governor Miles Road Bicycle and Pedestrian Improvements (Gary Schiffmiller, Technical Review Subcommittee BPAC Member)

## 8. SUBCOMMITTEE REPORTS

- a. Policy, Planning and Law Subcommittee (Steve Pilcher, Chair)

Doing research on trail safety. Will discuss research at the next meeting.



City of Santa Fe

# MINUTES

BICYCLING AND PEDESTRIAN  
ADVISORY COMMITTEE  
NOVEMBER 14, 2024  
5:30 PM  
CITY HALL  
COUNCIL CHAMBERS, 201  
LINCOLN AVENUE  
SANTA FE

b. Promotions, Education and Communications (Judith Gabriele, Chair)

Had a table at the grand opening of the El Camino Real Academy Trail (ECRA). Noticed that there were no trash bins and asked why? And, requested to have trash bins.

Staff Liaison responded that Parks lack manpower to maintain ECRA and therefore there are no trash bins/receptacles on the trail.

c. Technical Review

Group has yet to nominate a Chair. Currently, Member Schiffmiller attends all review meetings with City and SFMPO Staff.

9. **MATTERS FROM STAFF**

10. **MATTERS FROM THE COMMITTEE**

11. **MATTERS FROM THE CHAIR**

12. **NEXT MEETING: December 12 2024**

13. **ADJOURN 8:08PM**

\_\_\_\_\_  
Clerk

*Romella Glorioso-Moss*

\_\_\_\_\_  
Liaison

\_\_\_\_\_  
Chair

APPENDIX A

# TAP, RTP, CMAQ, CRP Call for Projects: City Priorities

Leah Yngve

MPO Transportation Planner

# FFY 26+ Grant Programs

Transportation Alternatives (TAP)

Recreational Trails Program (RTP)

Congestion Mitigation & Air Quality  
(CMAQ)

Carbon Reduction Program (CRP)

# Project Types - Planning Bureau

## Transportation Alternatives Program (TAP)

- Bicycle and/or pedestrian infrastructure enhancements
- ADA improvements
- Bicycle/pedestrian plans
- Safe Routes to School programs

## Recreational Trails Program (RTP)

- Recreational trails for walking/biking/hiking
- Recreational trails for motorized uses (ATVs, snowmobiles)
- Trail maintenance
- Trailheads
- Educational programs/trainings

# Project Types - Research and Climate Bureau

## Congestion Mitigation & Air Quality Program (CMAQ)

- Projects that reduce air pollution
- Reductions in vehicle miles traveled or fuel consumption
- Mode shift e.g. bicycle/pedestrian infrastructure
- Marketing/outreach
- Transit
- Traffic flow improvements e.g. roundabouts

## Carbon Reduction Program (CRP)

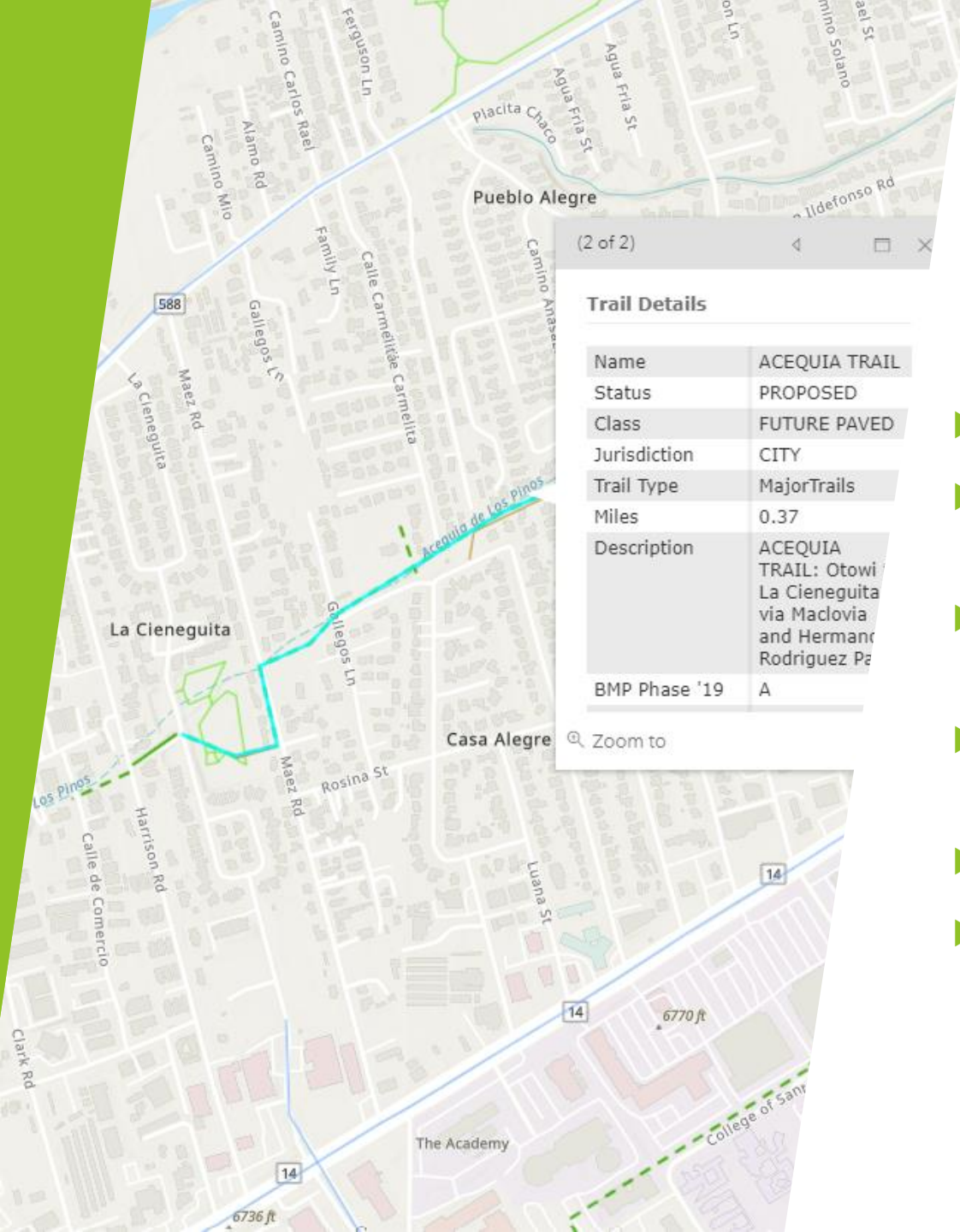
- Projects that reduce CO<sub>2</sub> emissions
- Transit
- Traffic control
- Transportation alternatives
- Energy efficient street lights
- Congestion mitigation
- Alternative fuels

# Available Funding Across the State

	FFY26	FFY27	FFY28	Total
TAP	\$9,231,177	\$9,231,177		\$18,462,354
RTP	\$1,338,837	\$1,338,837		\$2,677,674
CMAQ	\$10,000,000	\$10,000,000	\$10,000,000	\$30,000,000
CRP	\$9,300,000	\$9,300,000	\$9,300,000	\$27,900,000



# City of Santa Fe Priority Projects



## Transportation Alternatives (TAP) - Acequia Trail from Otowi to La Cieneguita

- ▶ Grant will be for design
- ▶ BPAC Strategic Plan Priority Project
- ▶ Bicycle Master Plan Phase A, Rank 6
- ▶ Community and neighborhood support
- ▶ Maez connection complete
- ▶ PNM utility easement negotiated

# Recreational Trails Program (RTP) - Rail Trail Crossings Project

- ▶ Phase A Bicycle Master Plan project
- ▶ Project began in 2021 or 2022 with preliminary investigation
- ▶ Crossings include:
  - ▶ Paseo de Peralta
  - ▶ Second Street
  - ▶ Siringo
  - ▶ Rodeo

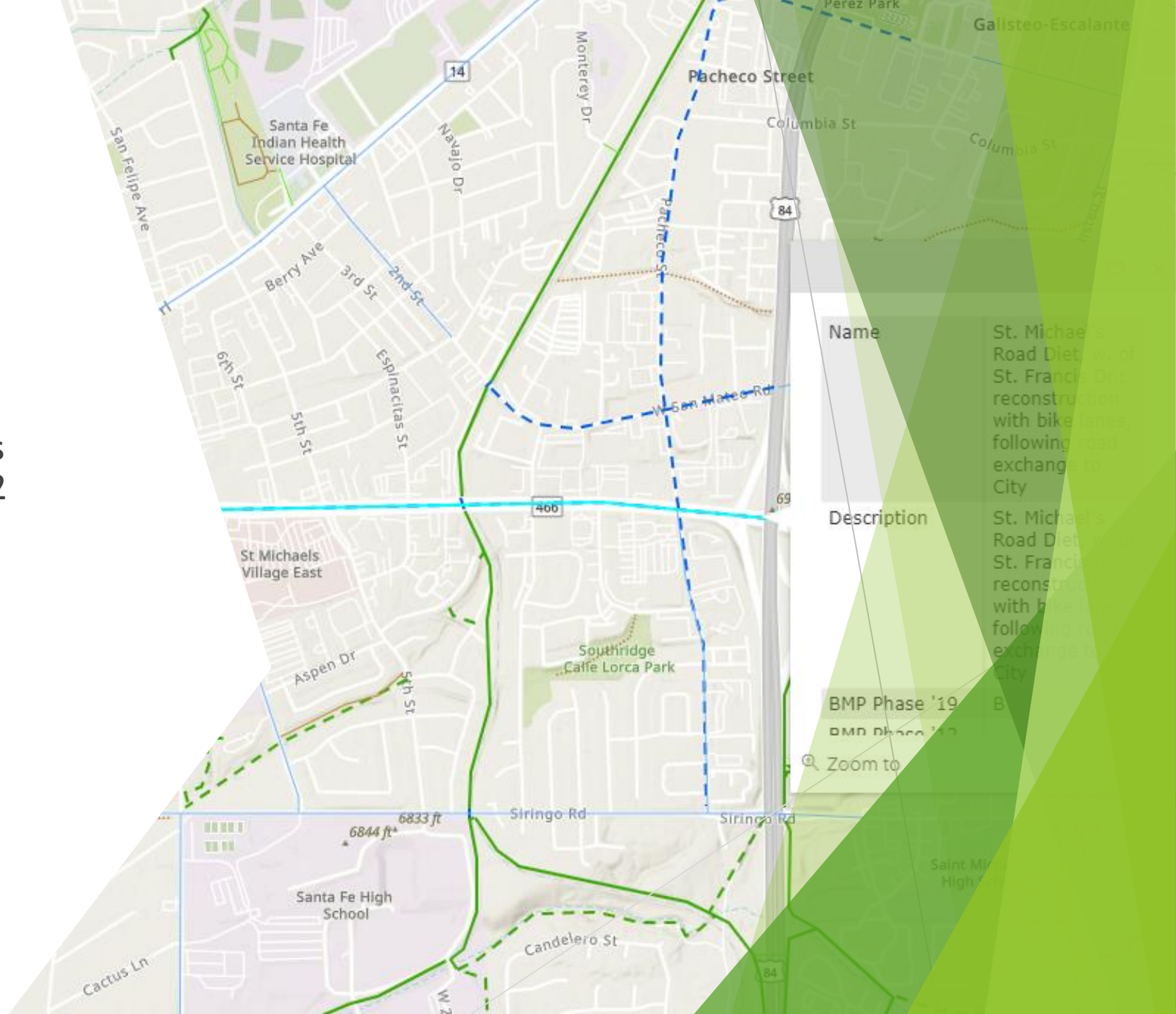


## Congestion Mitigation & Air Quality (CMAQ) - St. Michael's Rail Trail Underpass

- ▶ Bicycle Master Plan Phase A, Rank 3 priority
- ▶ Design is fully funded, construction is partially funded
- ▶ Design is near 60% complete
- ▶ Grant will be for construction

# Carbon Reduction Program (CRP) - St. Michael's Drive Road Diet Redesign

- ▶ Redesign will include a lane reduction and bike lanes
- ▶ Ownership of St. Michael's was passed to the City around 2022
- ▶ Bicycle Master Plan Phase B, Rank 1 (phase B due to prior NMDOT ownership)
- ▶ Metropolitan Transportation Plan Rank 15
  - ▶ Highest ranked unfunded project



# Timeline



**APPLICATIONS ARE DUE  
IN MARCH**



**AWARD LETTERS WILL  
BE SENT IN APRIL**

Thank you!



## Intersection of Llano Street & St. Michael's Drive



### Pedestrian Safety Improvements

- Crossing is frequently used by students
- Destinations to the north of the intersection
  - Residential neighborhood
- Destinations to the south of the intersection:
  - Milagro Middle School
  - Santa Fe Public Library (La Farge Branch)
  - Santa Fe High



## Llano Street & St. Michael's Drive Intersection



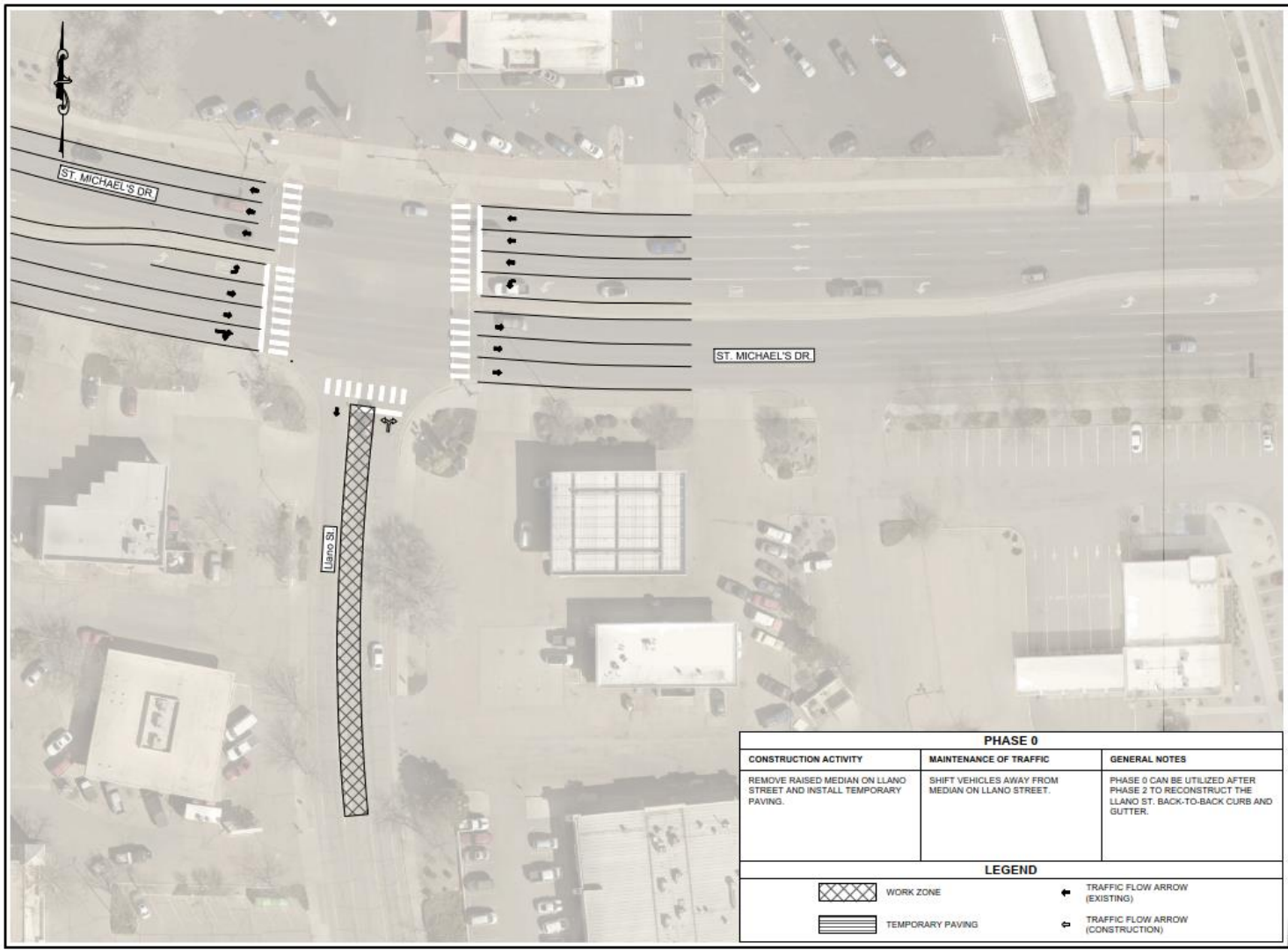
### Safety improvements for pedestrians and bicyclists.

- New crosswalk striping
- New ADA ramps and pedestrian push buttons
- Median islands with 6-foot-wide pedestrian refuge
  - Separation of conflicts
  - Pedestrian crossing stands out to motorists
  - Reduced exposure time








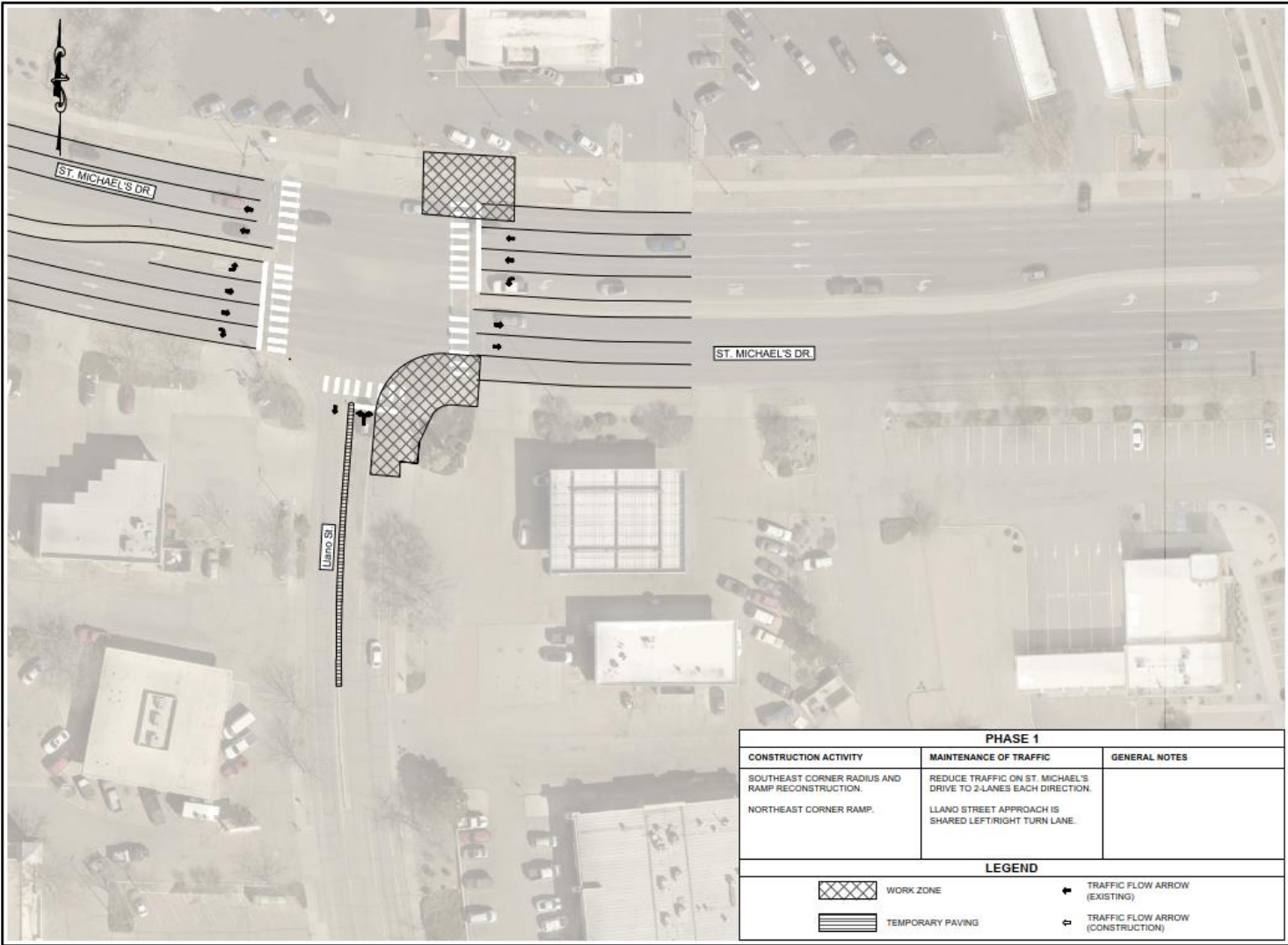








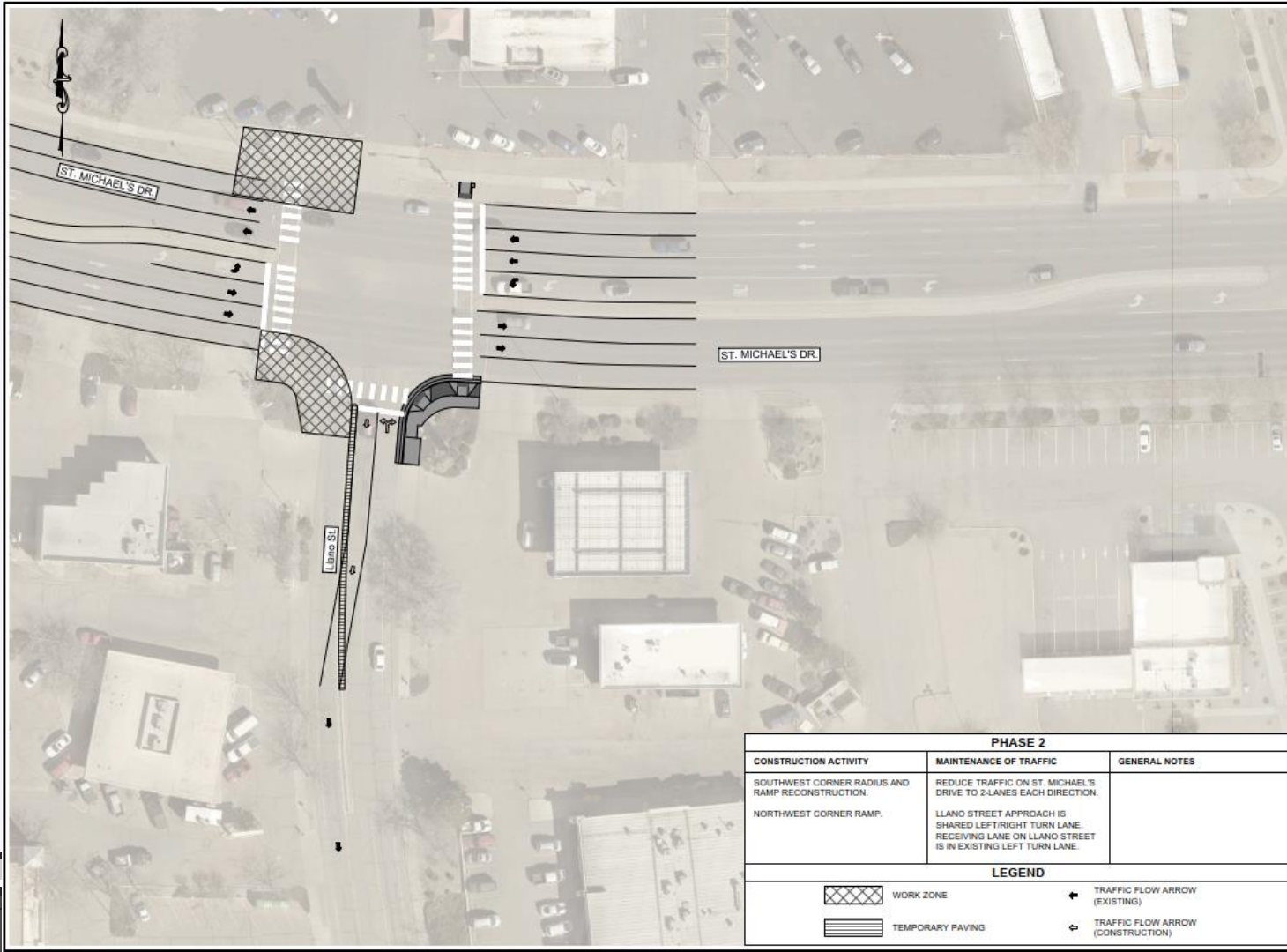
PHASE 0		
CONSTRUCTION ACTIVITY	MAINTENANCE OF TRAFFIC	GENERAL NOTES
REMOVE RAISED MEDIAN ON LLANO STREET AND INSTALL TEMPORARY PAVING.	SHIFT VEHICLES AWAY FROM MEDIAN ON LLANO STREET.	PHASE 0 CAN BE UTILIZED AFTER PHASE 2 TO RECONSTRUCT THE LLANO ST. BACK-TO-BACK CURB AND GUTTER.




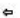
LEGEND	
 WORK ZONE	 TRAFFIC FLOW ARROW (EXISTING)
 TEMPORARY PAVING	 TRAFFIC FLOW ARROW (CONSTRUCTION)



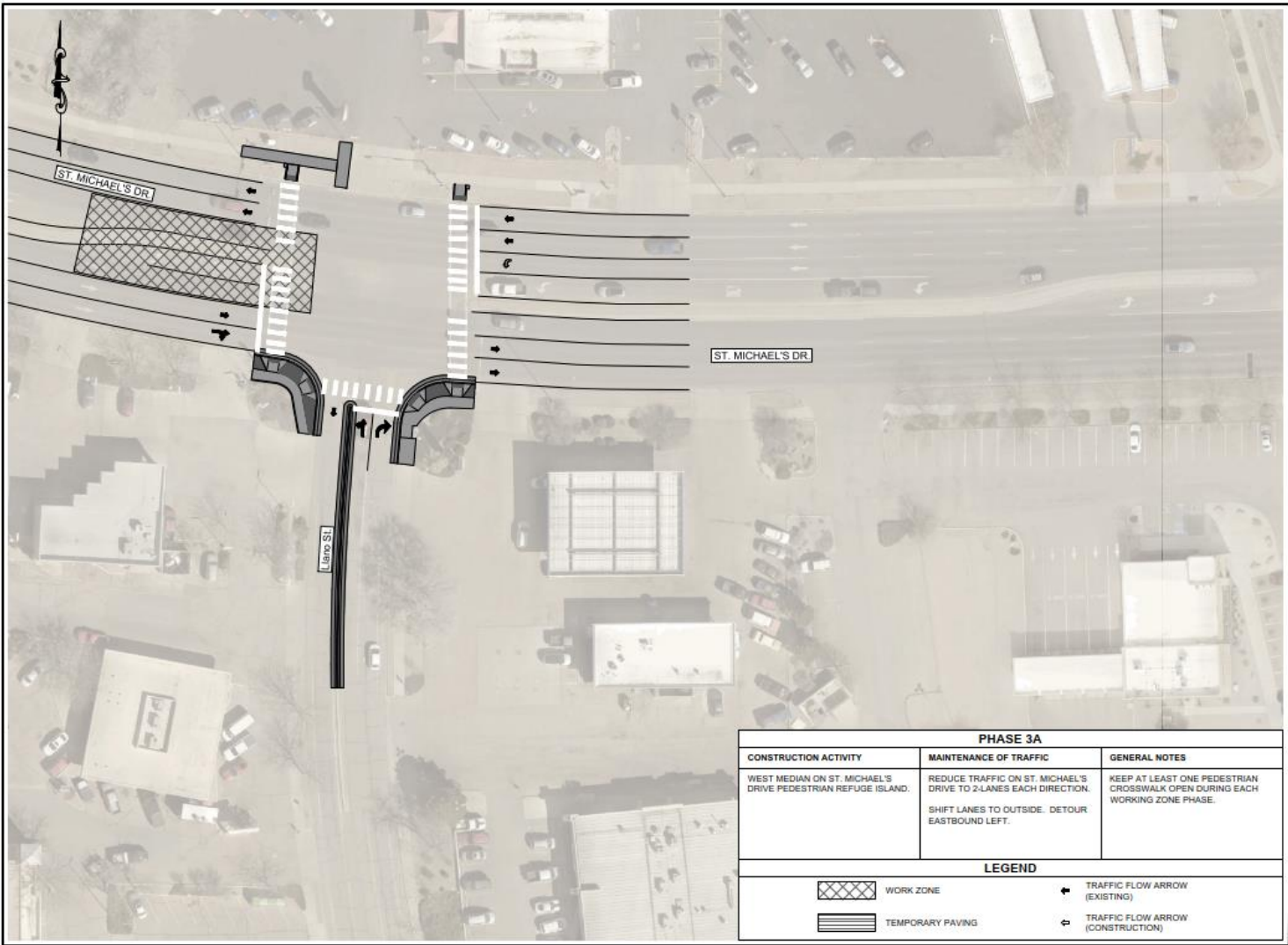






PHASE 1		
CONSTRUCTION ACTIVITY	MAINTENANCE OF TRAFFIC	GENERAL NOTES
SOUTHEAST CORNER RADIUS AND RAMP RECONSTRUCTION.  NORTHEAST CORNER RAMP.	REDUCE TRAFFIC ON ST. MICHAEL'S DRIVE TO 2-LANES EACH DIRECTION.  LLANO STREET APPROACH IS SHARED LEFT/RIGHT TURN LANE.	
LEGEND		
 WORK ZONE	 TRAFFIC FLOW ARROW (EXISTING)	
 TEMPORARY PAVING	 TRAFFIC FLOW ARROW (CONSTRUCTION)	

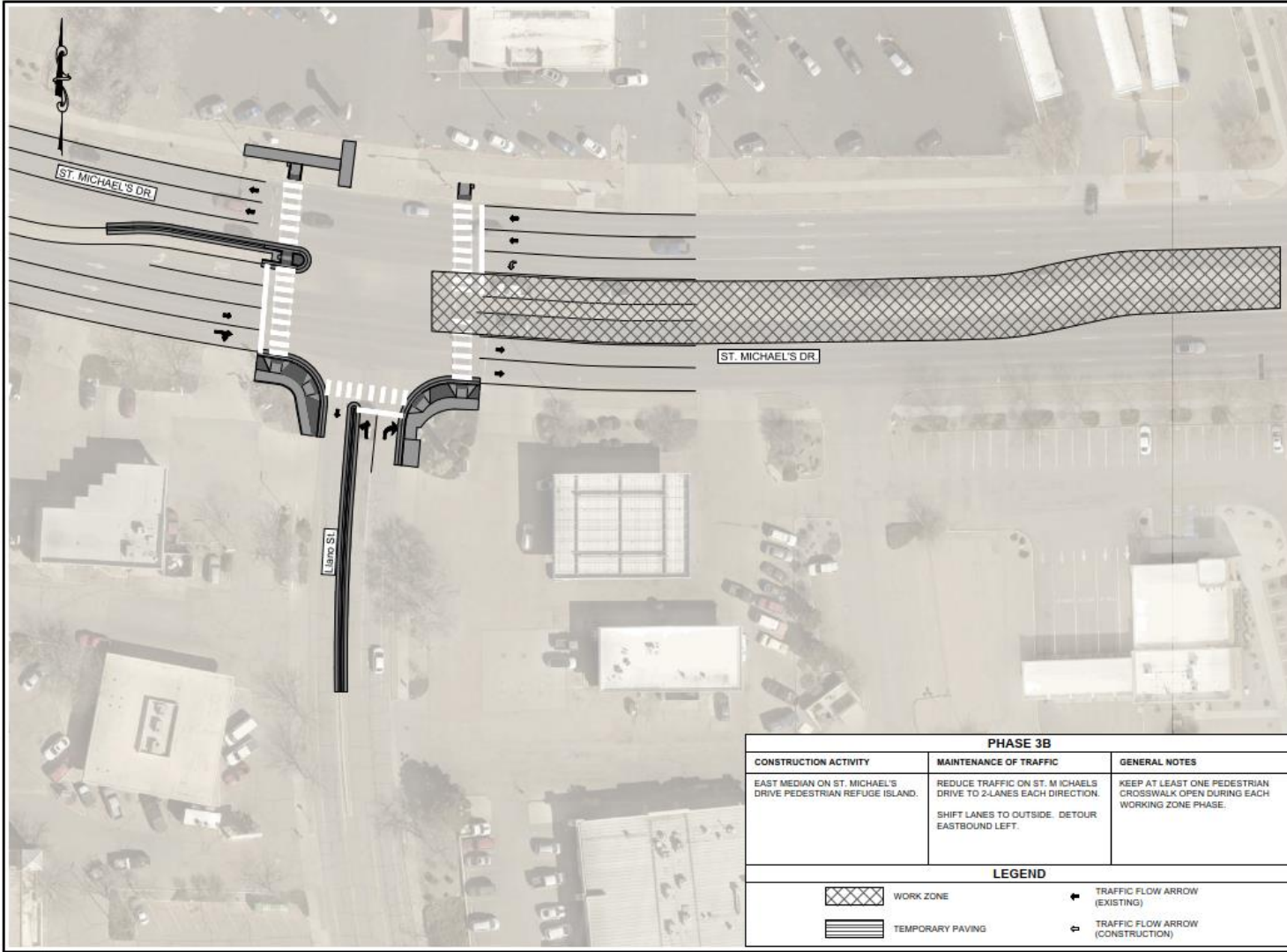






PHASE 2		
CONSTRUCTION ACTIVITY	MAINTENANCE OF TRAFFIC	GENERAL NOTES
SOUTHWEST CORNER RADIUS AND RAMP RECONSTRUCTION.	REDUCE TRAFFIC ON ST. MICHAEL'S DRIVE TO 2-LANES EACH DIRECTION.	
NORTHWEST CORNER RAMP.	LLANO STREET APPROACH IS SHARED LEFT/RIGHT TURN LANE RECEIVING LANE ON LLANO STREET IS IN EXISTING LEFT TURN LANE.	
LEGEND		
 WORK ZONE	 TRAFFIC FLOW ARROW (EXISTING)	
 TEMPORARY PAVING	 TRAFFIC FLOW ARROW (CONSTRUCTION)	





PHASE 3A		
<b>CONSTRUCTION ACTIVITY</b>	<b>MAINTENANCE OF TRAFFIC</b>	<b>GENERAL NOTES</b>
WEST MEDIAN ON ST. MICHAEL'S DRIVE PEDESTRIAN REFUGE ISLAND.	REDUCE TRAFFIC ON ST. MICHAEL'S DRIVE TO 2-LANES EACH DIRECTION.  SHIFT LANES TO OUTSIDE. DETOUR EASTBOUND LEFT.	KEEP AT LEAST ONE PEDESTRIAN CROSSWALK OPEN DURING EACH WORKING ZONE PHASE.
LEGEND		
 WORK ZONE	 TRAFFIC FLOW ARROW (EXISTING)	
 TEMPORARY PAVING	 TRAFFIC FLOW ARROW (CONSTRUCTION)	



PHASE 3B		
CONSTRUCTION ACTIVITY	MAINTENANCE OF TRAFFIC	GENERAL NOTES
EAST MEDIAN ON ST. MICHAEL'S DRIVE PEDESTRIAN REFUGE ISLAND.	REDUCE TRAFFIC ON ST. MICHAELS DRIVE TO 2-LANES EACH DIRECTION. SHIFT LANES TO OUTSIDE. DETOUR EASTBOUND LEFT.	KEEP AT LEAST ONE PEDESTRIAN CROSSWALK OPEN DURING EACH WORKING ZONE PHASE.
LEGEND		
 WORK ZONE	 TRAFFIC FLOW ARROW (EXISTING)	
 TEMPORARY PAVING	 TRAFFIC FLOW ARROW (CONSTRUCTION)	



**APPENDIX C**

**CITY OF SANTA FE BICYCLING  
AND PEDESTRIAN ADVISORY  
COMMITTEE**

**TRAIL MAINTENANCE AND CONNECTIVITY SURVEY  
SPRING 2024**

**Q1: IN REGARDS TO BICYCLE AND PEDESTRIAN INFRASTRUCTURE MAINTENANCE, WHAT WOULD YOUR TOP PRIORITIES BE? SELECT OR LIST ALL THAT APPLY.**

<b>ANSWER CHOICES</b>	<b>RESPONSES</b>
Road repaving	32.69%
Pothole maintenance/surface repair	<b>62.74%</b>
Restriping/repainting markings	31.73%
Snow and ice clearance (on-street and off-street)	26.44%
Vegetation maintenance	33.65%
Uneven city-owned sidewalks	<b>42.79%</b>
None of the above	0.48%
Other – Bike lanes/repaving/repair of trails	35.34%

**TOTAL RESPONSES: 416**

**Q1, BY DISTRICT: IN REGARDS TO BICYCLE AND PEDESTRIAN INFRASTRUCTURE MAINTENANCE, WHAT WOULD YOUR TOP PRIORITIES BE? SELECT OR LIST ALL THAT APPLY.**

ANSWER CHOICES	RESPONSES			
	D1	D2	D3	D4
Road repaving	28.77%	30.34%	24.00%	29.17%
Pothole maintenance/surface repair	60.27%	62.92%	44.00%	70.83%
Restriping/repainting markings	32.88%	35.96%	28.00%	33.33%
Snow and ice clearance (on-street and off-street)	35.62%	26.97%	12.00%	25.00%
Vegetation maintenance	35.62%	30.34%	40.00%	50.00%
Uneven city-owned sidewalks	45.21%	46.07%	32.00%	45.83%
None of the above	0.68%	0.00%	0.00%	0.00%
Other, including an issue with a specific location (Please describe)	34.93%	39.33%	24.00%	41.67%
<b>TOTAL RESPONSES: 308</b>	<b>146</b>	<b>89</b>	<b>25</b>	<b>48</b>

## Q2: WHICH TRAIL PROJECTS DO YOU THINK BPAC SHOULD PRIORITIZE OBTAINING FUNDING FOR TO DESIGN AND CONSTRUCT IN THE NEXT 5-10 YEARS? SELECT OR LIST ALL THAT APPLY.

ANSWER CHOICES	RESPONSES
Acequia Trail Extension - Otowi to La Cieneguita	43.98%
Arroyo de los Chamisos Trail Extension –South Meadows to Camino Entrada	38.57%
Arroyo de los Chamisos Trail Extension – East Zia to West Zia to Gail Ryba Trail	38.82%
Midtown Campus to Siringo Rd. with connections to LaFarge Library, St. Michael's Village W. shopping center, etc.	48.89%
Mutt-Nelson Road to connect to Tierra Contenta Trail & SWAN Park	20.64%
NM Central Rail Trail - Piñon Elementary School to Pueblos del Sol Trails	31.20%
None of the above	3.44%
Other - River Trail/Rail Trail/Cerrillos/Acequia Trail/St. Francis	20.64%
<b>TOTAL RESPONSES: 407</b>	

**Q2, BY DISTRICT: WHICH TRAIL PROJECTS DO YOU THINK BPAC SHOULD PRIORITIZE OBTAINING FUNDING FOR TO DESIGN AND CONSTRUCT IN THE NEXT 5-10 YEARS? SELECT OR LIST ALL THAT APPLY.**

ANSWER CHOICES	RESPONSES			
	D1	D2	D3	D4
Acequia Trail Extension - Otowi to La Cieneguita	54.68%	42.05%	20.00%	36.17%
Arroyo de los Chamisos Trail Extension – South Meadows to Camino Entrada	33.09%	36.36%	52.00%	46.81%
Arroyo de los Chamisos Trail Extension – East Zia to West Zia to Gail Ryba Trail	33.81%	46.59%	32.00%	44.68%
Midtown Campus to Siringo Rd. with connections to LaFarge Library, St. Michael's Village W. shopping center, etc.	48.92%	61.36%	44.00%	44.68%
Mutt-Nelson Road to connect to Tierra Contenta Trail & SWAN Park	17.99%	17.05%	44.00%	14.89%
NM Central Rail Trail - Piñon Elementary School to Pueblos del Sol Trails	32.37%	34.09%	16.00%	14.89%
None of the above	5.04%	2.27%	0.00%	2.13%
Other (Please describe)	26.62%	20.45%	24.00%	17.02%
<b>TOTAL RESPONSES: 299</b>	<b>139</b>	<b>88</b>	<b>25</b>	<b>47</b>

### Q3: IF YOU ARE A RESIDENT OF SANTA FE, WHAT CITY COUNCIL DISTRICT DO YOU RESIDE IN?

ANSWER CHOICES	RESPONSES
District 1	34.93%
District 2	21.53%
District 3	5.98%
District 4	11.48%
I don't know	17.94%
N/A	8.13%
<b>TOTAL RESPONSES: 418</b>	

# POTENTIAL NEXT STEPS/FOLLOW-UP

- Present data to relevant city committees (e.g., Public Works, Mayor's Committee on Disability)
- Share data with Public Works leadership
- How can we advocate for and ensure a budget gets allocated for maintenance?
- What are some strategies to address geographic inequities in seeking input from our constituents?
- What concrete steps do we need to take to address the top issues identified in the survey?