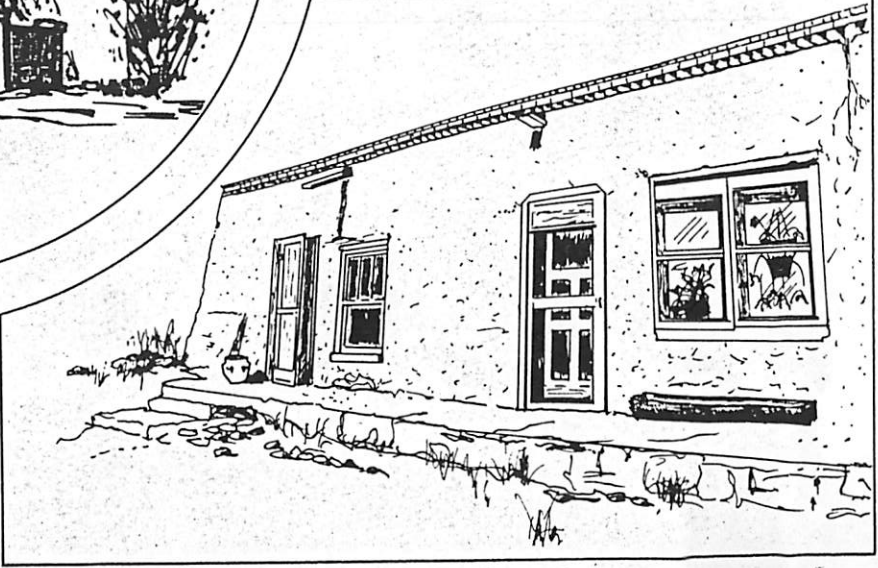
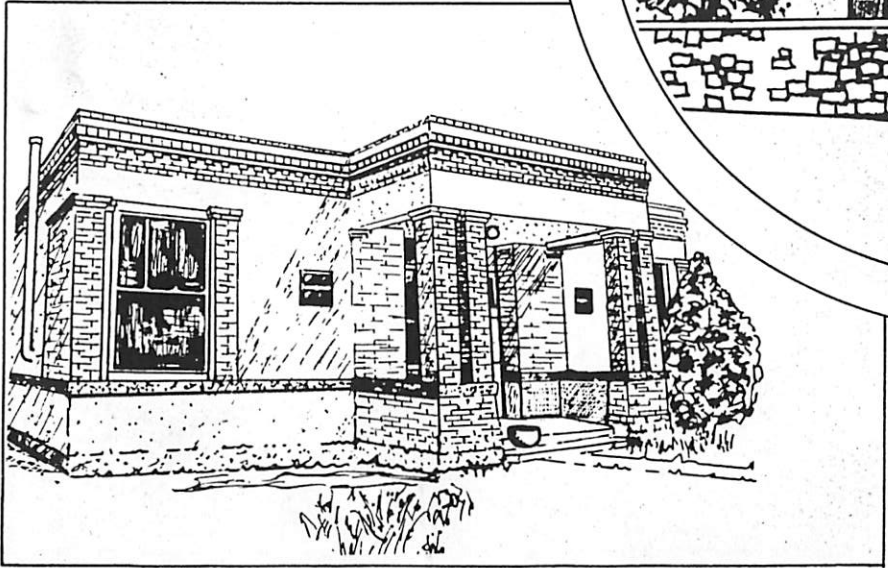
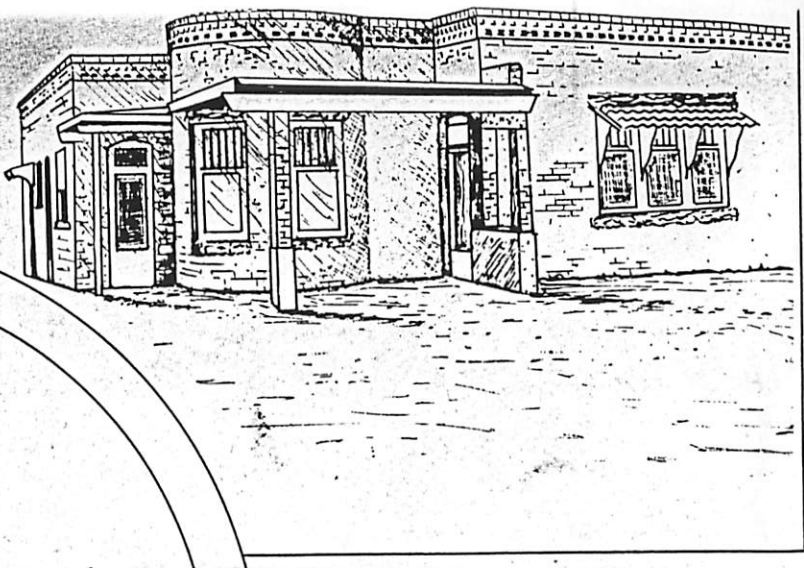
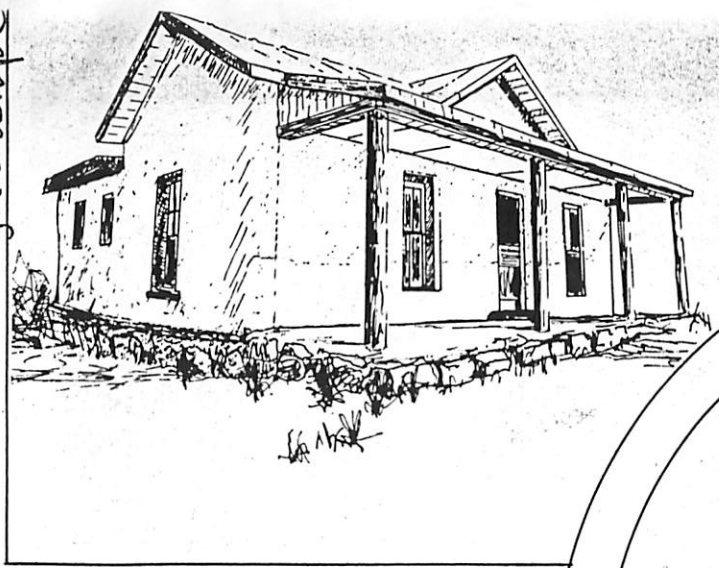


Guadalupe



GUADALUPE NEIGHBORHOOD HISTORIC SURVEY

GUADALUPE NEIGHBORHOOD

HISTORICAL SURVEY

Prepared by
Earl Cordova
for
The City of Santa Fe

April 1981

This project was supported by a grant to The City of Santa Fe from The Historic Preservation Bureau of New Mexico.

City of Santa Fe



ARTHUR E. TRUJILLO
Mayor

WILLIAM C. SISNEROS
City Manager

COUNCILORS

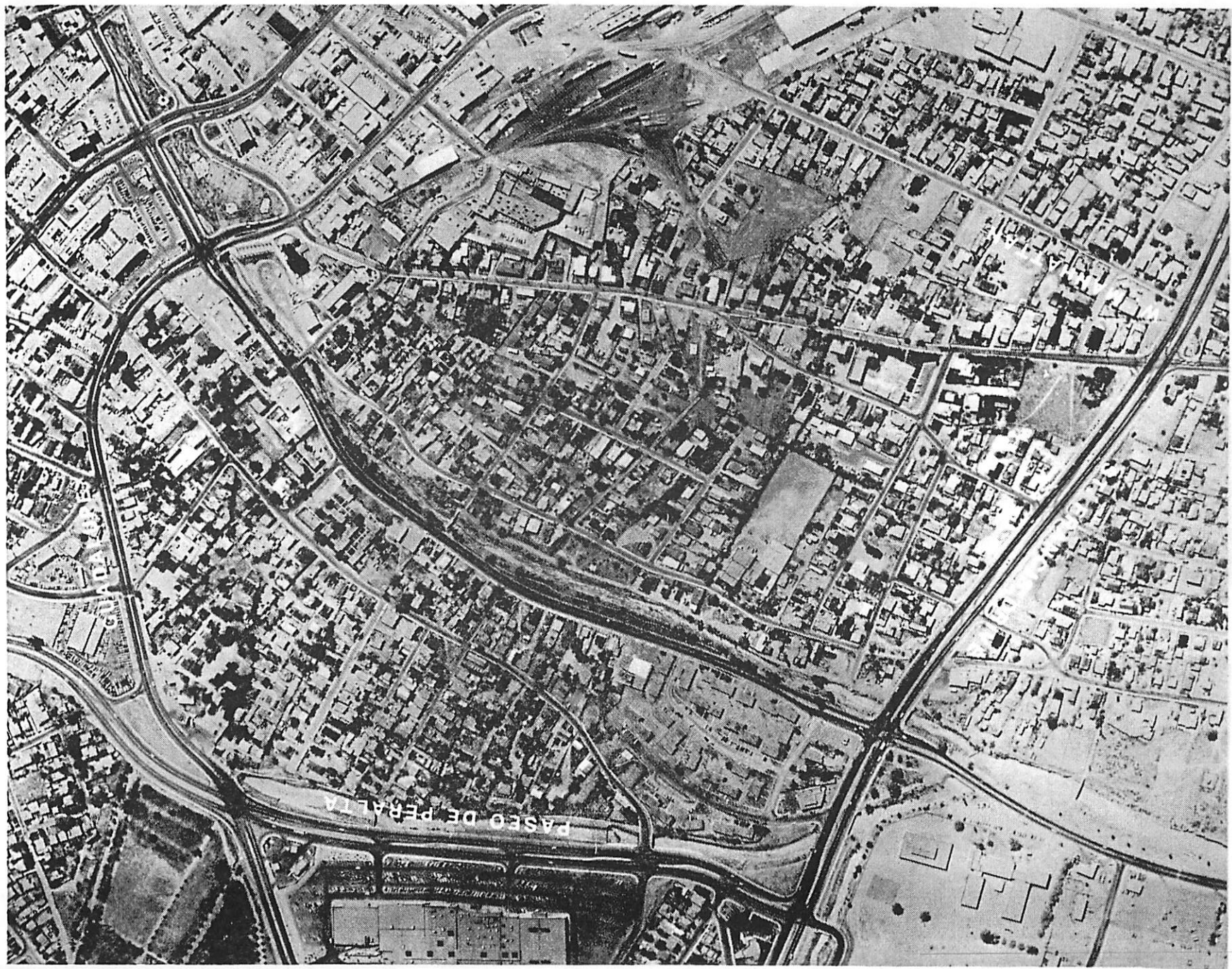
LOUIS R. MONTANO
Mayor Pro Tem
DORA BATTLE
RICHARD B. CATANACH
ELIZABETH STEWART FIORINA
DOLORES M. LEE
CLARENCE V. (PORKY) LITHGOW
CARL MILLER
J.M. (MACK) MOORE

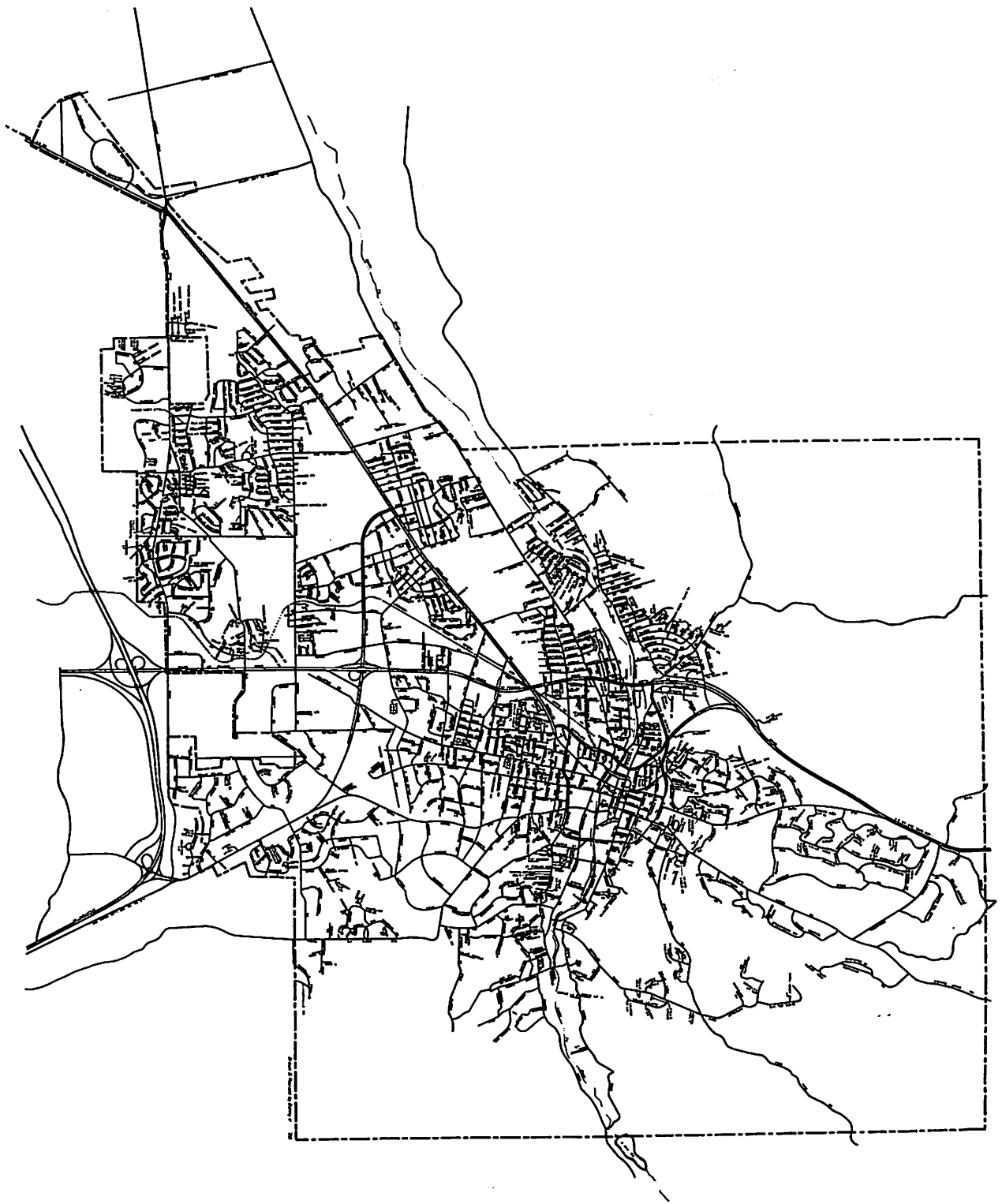
PROJECT STAFF

Cecilia Abeyta	Planning Intern
Edward Archuleta	Planning Intern
Diana Perez	Report Typing
Yolanda Vigil	Report Typing
Lena Baca	Report Typing
Linda Tigges	Associate Planner
Stefanie Beninato	Technical Writer
Harry Moul	City Planner
Jim Griffith	Graphics Director
Shirin Cave	Planning Technician

With special thanks to the following people whose cooperation and assistance made this report possible:

Thomas Chavez, Sherry Smith-Gonzales, Arthur Olivas, Richard Rudisill, Michael Weber of The Museum of New Mexico, James Purdy and Lala Baca of The New Mexico State Records Center and Archives, Kathleen Brooker of The Historic Preservation Bureau and Dr. Myra Ellen Jenkins.





Need

The need for neighborhood preservation and conservation has long been an important concern to residents of Santa Fe, especially in neighborhoods with historic characteristics. This concern for preservation is evident in downtown Santa Fe, where conservation efforts have followed the guidelines of the Historical Styles District. The Historical Styles District is a special overlay zoning ordinance, originally enacted by the City Council in 1957 to preserve the architectural heritage of Santa Fe. The district includes the historic plaza area, and has been enlarged to include most of the east side of Santa Fe. However, there are other areas outside of the Historical District containing elements of historical interest which should be preserved for future citizens.

One area of Santa Fe of particular importance as a historic community is the Guadalupe Neighborhood which lies within the boundaries of St. Francis Drive, West Manhattan Street, Guadalupe Street, and Paseo de Peralta. Although the Guadalupe Neighborhood is not part of the City's Historical District, it is listed on the National Register of Historic Places as part of the Santa Fe National Historic District. Established under the National Historic Preservation Act of 1966, the National Register is the official Federal listing of the nation's cultural property that is worthy of preservation. Proper-

ties listed on the Register are also eligible for certain Federal grants administered by the Department of the Interior and the Department of Housing and Urban Development. Four structures in the neighborhood are already listed on the New Mexico Register of Cultural Properties with one of these listed individually on the National Register of Historic places.

The need to further preserve the Guadalupe Neighborhood has become apparent as the growth of downtown Santa Fe has expanded along Guadalupe Street. This location is the only area most conducive to future growth of the downtown, as expansion is contained on the south by the State Capitol complex, and on the north and east by established residential neighborhoods with high property values. Guadalupe Street contains large areas of land along the railroad which is suitable for development and is currently underutilized. The area is expected to be developed within the next ten years, causing a definite impact on the Guadalupe Neighborhood.

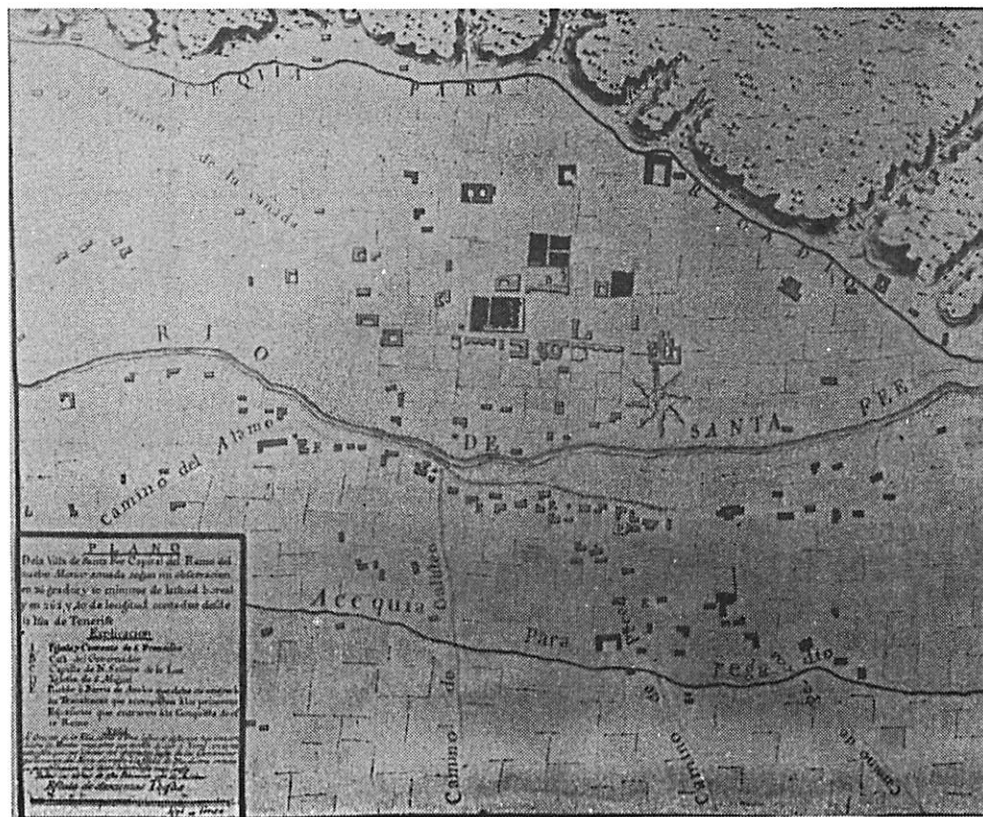
Historic Development

Guadalupe Neighborhood contains many elements which contribute to its historic development. It began as a Hispanic farming community outside of the plaza area. The first homes were scattered

throughout the area and were concentrated along El Camino Real and around and to the west of the Chapel of Nuestra Senora de Guadalupe. El Camino Real ran through the Guadalupe Neighborhood from the plaza through the community of Agua Fria and south into Mexico. It was the main trading route between the United States and

Mexico, beginning in Santa Fe, and terminating in Mexico City. El Camino Real appears on the Urrutia Map of 1768 as the Camino del Alamo. Often, travelers along El Camino Real would stop and say a prayer at the Chapel before beginning a long journey, or would give thanks at the Chapel upon arriving in Santa Fe.

Map of Santa Fe, New Mexico
1766-68
By Urrutia



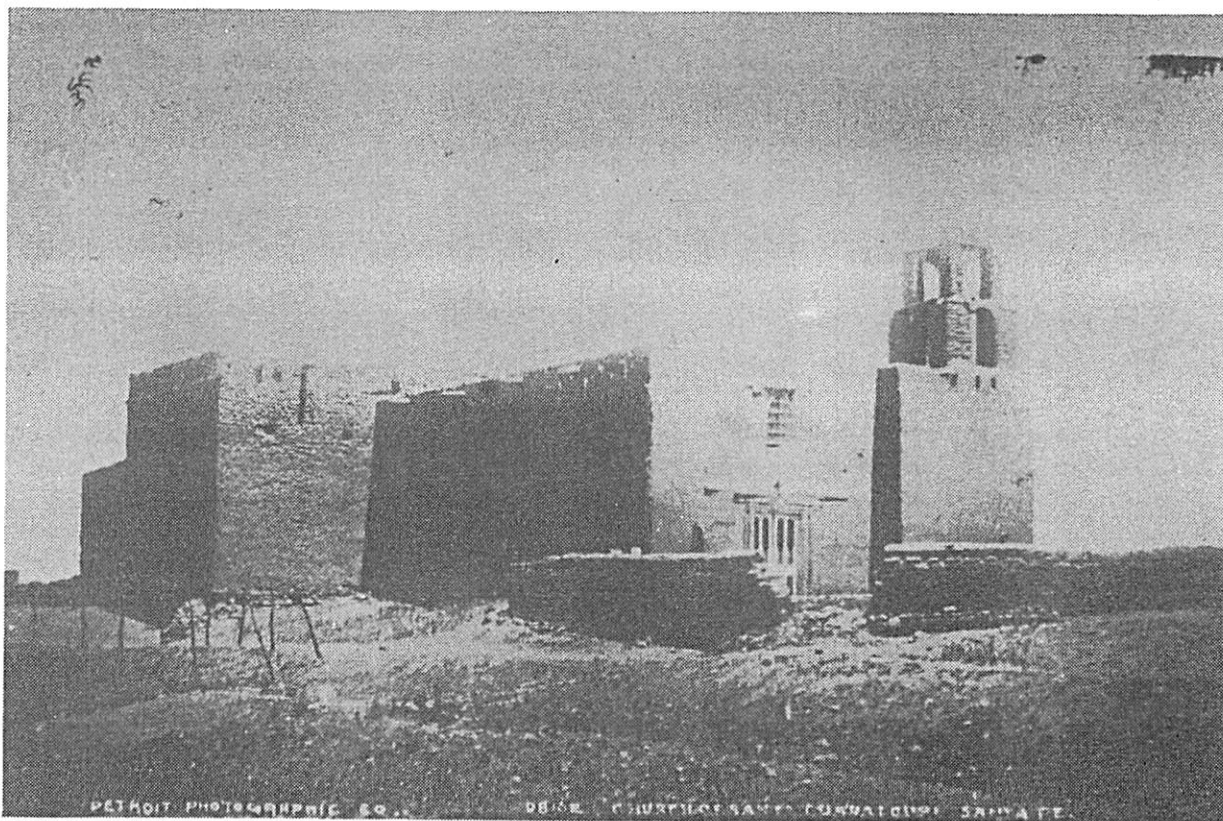
Guadalupe Chapel

The Chapel, for which the community is named, is very important to the development of the Guadalupe Neighborhood. The exact date the Chapel was built is unknown, but a license for its construction was issued in 1795 by the Bishop of Durango, Mexico. Religious processions on feast days were held with parishioners proceeding from the Chapel to houses in the neighborhood which had set up altars

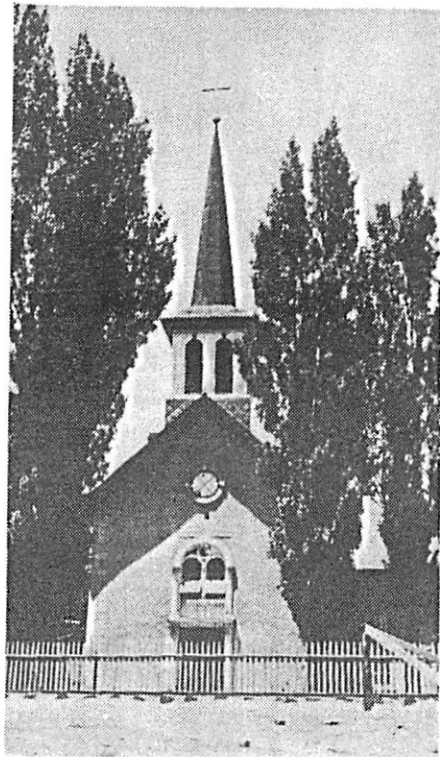
for worship.

Guadalupe Chapel is built of adobe in the cruciform shape. It originally had a flat dirt covered roof. The interior, 90 feet long, had a dirt floor and round vigas supported by carved corbels. For a period of time it was seldom used, except on feast days, and as a result, fell into a state of disrepair.

GUADALUPE CHURCH
SANTA FE, NEW MEXICO
1881

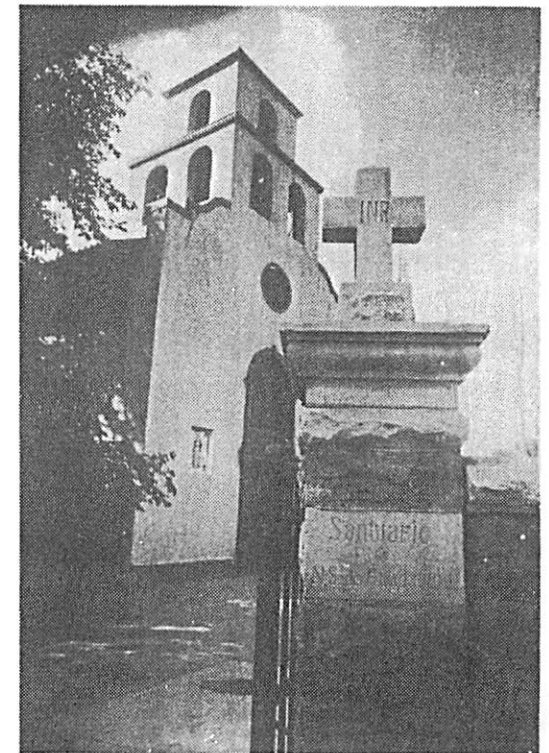


The exterior design was altered during the restoration administered by Father De Fouri, a French Franciscan brother. Father De Fouri was brought to the church as the parish priest by Archbishop Lamy in 1881. The restoration project completed by Father De Fouri was designed in the Gothic Style. Its features included Gothic windows with pointed arches, a high peaked roof, an imitation rose window on the front gable, and a steeple at the entrance. The grounds are surrounded by a white picket fence, poplar trees, and lilac bushes.



Guadalupe Church
Santa Fe, New Mexico

A fire caused by faulty wiring almost destroyed the church in 1922. However, the chapel was rebuilt in 1923 and designed in the California Mission Revival Style. Its characteristics included a mission tile roof, a curvilinear parapet, and segmental arches on the front bell tower. Today, the Chapel is still a viable part of the neighborhood. It has been renovated for use as a museum through a grant received from the City of Santa Fe from the American Bicentennial Administration. The recent renovation has attempted to restore the chapel to its original Spanish Colonial design.



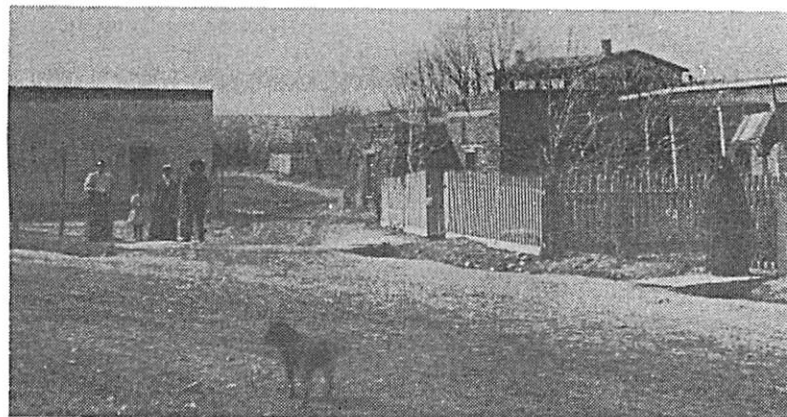
Guadalupe Church
Santa Fe, New Mexico
ca 1955

Acequias

Also important to the historical development of Guadalupe Neighborhood were the acequias which were part of the larger irrigation system of Santa Fe. The acequias ran through the neighborhood from east to west and were fed by the Santa Fe River. Since properties facing the acequias were more accessible to the irrigation water, plots of land were subdivided into long, narrow parcels so that more residents had frontage on the acequias. Not only was water accessible for irrigation from the acequias, but it also increased property values in the area. This in turn, attracted new investment in the community. Farming became an important occupation for the residents who grew alfalfa, corn, chili, and varieties of fruit trees on their land.

Among the acequias running through Guadalupe Neighborhood was one along El Camino Real (Agua Fria Street). This acequia began at the diversion just above the present intersection of Old Santa Fe Trail and Santa Fe River, continuing west past what is now St. Francis Drive. Three other acequias were diverted from the river. One ran along Alto Street, from a diversion near Closson Street. Another acequia was diverted from this same point and ran west between the river and San Francisco Street. The last acequia was diverted from the Santa Fe River at Guadalupe Street and

flowed in a northern direction through private properties, then turned west through Arroyo Mascaras. Evidence of this acequia is still visible. As the neighborhood grew, and farming became less important, the acequias soon became obsolete and were covered. However, many of the acequias served as property lines when land was later divided.

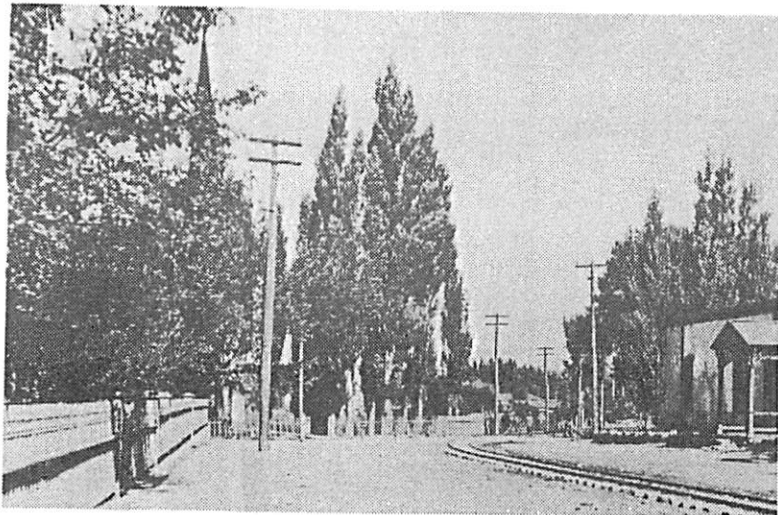


Agua Fria Street at Dunlap Street
Santa Fe, New Mexico
ca 1900

Atchison, Topeka, and Santa Fe Railroad

The Major development promoting growth of Guadalupe Neighborhood was the westward expansion of the Atchison, Topeka, and Santa Fe Railroad. This railroad originally chose Santa Fe, for which the com-

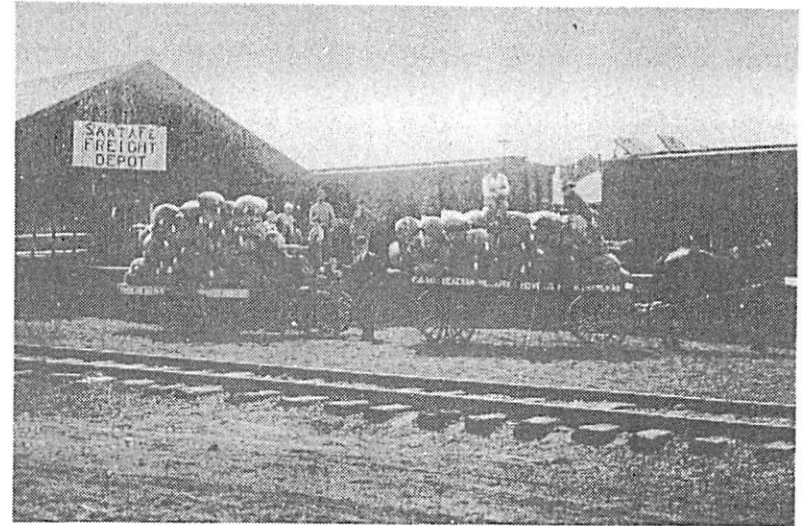
pany was named, as its goal to establish a major stop connecting Chicago with Los Angeles. However, due to the steep inclines of the local topography, Santa Fe was bypassed as the main route and was designated a branch line of the A.T. & S.F. Railroad. The branch line came from the main line, 18 miles away at Lamy Junction. The main terminal stop along the trans-continental route was, instead, established in Albuquerque.



Guadalupe Street
Santa Fe, New Mexico

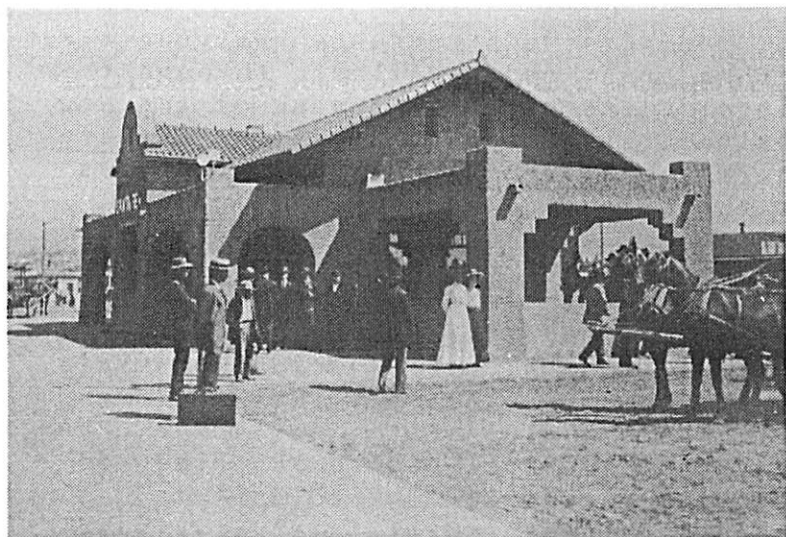
However, the A.T. & S.F. spur line arrived in Santa Fe on February 9, 1880. The Denver & Rio Grande line came to Espanola, in 1881, up the Rio Grande into Santa Fe through Guadalupe Street in 1886. It originally

was the Texas, Santa Fe and Northern Railroad and was later acquired by the D. & R.G. system in 1895. The tracks fronting the old D. & R.G. Depot have been removed and the brick structure now serves as a restaurant.



Shipping 1916 Pinon nut crop
Gormley's General Store
depot - Santa Fe, New Mexico
1916

An A.T. & S.F. freight depot, as well as a passenger depot were located in Guadalupe Neighborhood. The freight depot was a frame building about 100 feet long and 20 feet wide. The siding was of foot-wide vertical boards. The eaves overhung the passenger platform and heavy timbered freight platforms at either end allowed unloading from large horse freight wagons.

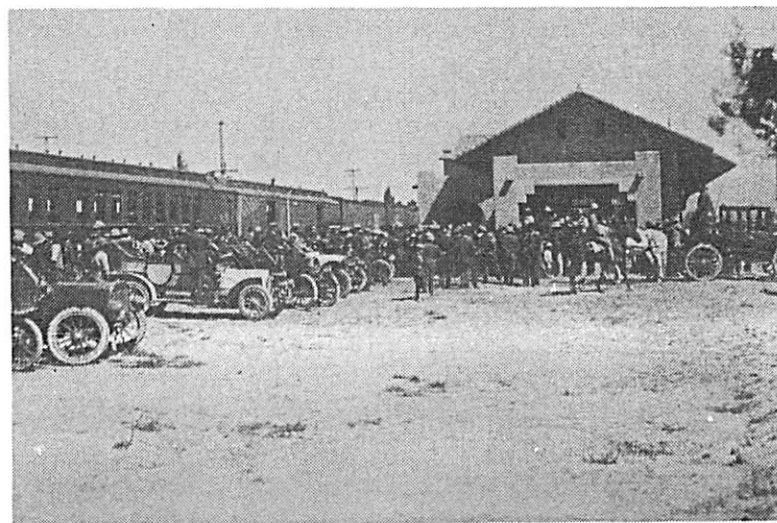


Santa Fe Railroad Depot
Santa Fe, New Mexico
ca 1912

Photo by: Jesse Nusbaum

The present A.T. & S.F. station was built in 1910 about 200 yards northeast of its original freight depot. Although the tracks have since been removed from Guadalupe Street. The depot still stands and serves as a reminder of the railroad history of Santa Fe. The California Mission Style depot was a symbol of the A.T. & S.F. expansion into the west and was the standard architecture adopted by that railroad company. Its features include mission arches, pitched roof covered with red mission tile, and a curved parapet. The depot is still in service on a limited basis transporting only freight materials.

With the railroad came people, supplies, and new investment. Guadalupe Neighborhood benefited greatly from the railroad, as it was located in the midst of economic activity created by the railroad. In essence, the neighborhood became a center of trade. This is still evidenced by the numerous warehouses located around the depot. People arriving from the east got their first real look at Santa Fe as they stepped off the train. It was an exciting era, with an increased outlook for prosperity. Employment rose to serve the needs of incoming tourists who were influenced to visit the west by the overwhelming advertising campaign propagated by the A.T. & S.F. Railroad. Many of the



Soldiers at Railroad Depot
General Bell's visit
regarding "Taos Rebellion"
Santa Fe, New Mexico
1913

Photo by: Jesse Nusbaum

tourists were attracted enough to the area to stay and live. New homes were constructed, and businesses expanded to serve the needs of the newcomers. Guadalupe Neighborhood felt the influx of new styles of architecture.

By the time the railroad arrived, the street pattern had already been established with a radial convergence to the downtown plaza area. The streets of San Francisco, Alto, and Agua Fria all were main thoroughfares leading downtown. Lands lying between these streets were later subdivided with newer streets following a North-South direction. Thus, the neighborhood was gradually filled in, while the concentration of older homes remained along the earlier thoroughfares. Property adjoining the railroad was subdivided into the gridiron pattern in hopes of future speculation. However, this property was never really developed into residential use, but instead, became a freight warehouse area. The gridiron pattern did develop east of the railroad, outside the neighborhood boundary. Thus, Guadalupe Neighborhood retained much of its architecture, fronting the narrow street line. Homes and property were usually divided among family members which has resulted in a land ownership pattern characterized by many small, oddly shaped lots.

Historic Survey of the Guadalupe Neighborhood

With the historical importance of Guadalupe Neighborhood recognized, a survey

to document the structures was undertaken with a grant made available through the Historic Preservation Bureau of the New Mexico State Planning Division. Currently, there are approximately 700 structures in the neighborhood. Of these, 300 structures were surveyed and cataloged on the basis of the physical age and architecture. Initially, the age of a structure was estimated on the basis of type of windows, construction materials, style, and any other physical features which gave a clue of the age. The physical characteristics were observed and recorded on the New Mexico Building Inventory Forms. Oral interviews with homeowners were also recorded when possible. After estimating the date of construction, an attempt was made to verify the actual age by using Santa Fe City Directories. Because the residential directories were first published in 1928, other means of estimating construction dates were used on structures constructed before this date. This included County Assessors records, personal deeds, and abstracts.

Using the information obtained from the survey, structures were evaluated for nomination to the New Mexico State Register of Cultural Properties. The two factors involved in evaluation were historical significance and architectural merit. Some structures were considered eligible for nomination because of their historical significance whether or not they were architecturally significant. The designation of historic significance was

usually serving as the home of a person of historic importance. Other structures were selected because of their unique architectural features. An attempt was made to select those structures which were the best representatives of a particular style. However, in most instances, more than one structure from the same style was selected as they contained unique architectural qualities not visible on other structures. This was particularly the case with the many examples of indigenous New Mexico architecture.

Historical Significance

In determining the historical significance of a structure, information was gathered on the individual who either owned or resided in the building. Through the verbal accounts with some of the homeowners, a history of people who owned a particular structure was discovered. Many homes in the area had remained in the family for generations, which made it possible to trace the origin and background of the family. Usually, the homeowner was in possession of the original legal documents, such as deeds and abstracts. Most of these documents were in Spanish and described not only the property, but also the real estate located on the property.

When the history of a structure was not known by the owner, names were arrived at through the 1912 King's Map which indicated the owner of certain parcels, or through the 1928 Hudspeth's City Direc-

tory. Individual names were revealed by research in the State Archives or the State History Library of the Museum of New Mexico. Texts with accounts of New Mexico's early history were the main sources of research. Two books, The Leading Facts of New Mexican History, and An Illustrated History of New Mexico listed names and biographies of early pioneers and prominent citizens of New Mexico. Newspaper articles were another valuable source of historical information. Most of this historical data came from The Daily New Mexican, established in 1868, copies of which are now recorded on microfilm. Names associated with properties were also investigated using necrology files, containing references to the obituary column. The homes of persons contributing to the social, cultural, or political growth of the city were included in the nomination forms to the State Office of Historic Preservation.

Regional Architecture

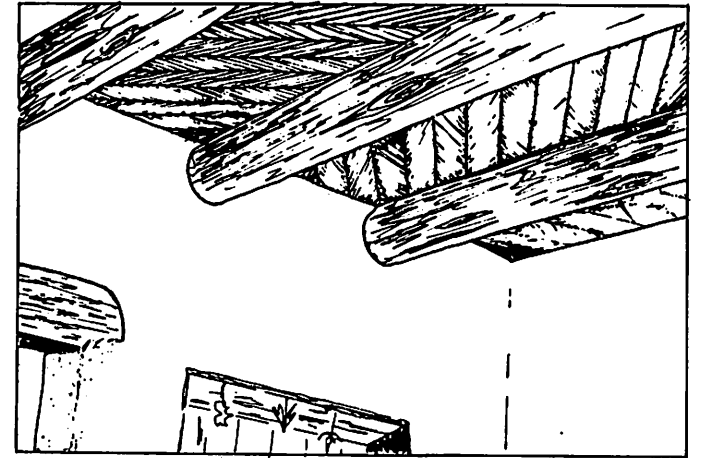
The introduction of new building materials into the west represents another step in the long process of the development of regional adobe architecture. Every improvement occurring during the development process was an important episode in the evolution of American history. This architectural development provides a better understanding and background of the people who built and lived in the structures.

The process began with the first people

to occupy the region, the Pueblo Indian. Their building skills related not only to the environment, but also included the technology and cultural heritage at one point in time. The process continues with the Spanish conquest of the Southwestern United States which represents the introduction of European ideas and technology. Thus, the original Pueblo Indian adobe architecture characterized by multi-stories with setbacks, was amended to include the improvements brought over with the early Spanish settlers. Finally, the technology brought to the region by the first Anglo settlers began with the trading business made possible through early trade routes including the Santa Fe Trail. The process continues as modes of transportation on improved routes, such as the railroad, progressed and opened up the west to increase trade and new population growth. The improvement of transportation routes increased building supplies transported into Santa Fe.

During the early development of Santa Fe, two styles of architecture were prevalent. First, there was the style classified as Spanish-Pueblo, and as the name suggests, a combination of Spanish and Pueblo Indian Styles. This style dates back hundreds of years before the Spanish conquest in the 1500's. Pueblo Indians used earth to construct their dwellings. However, they did not use adobe bricks as such, but instead, molded damp courses of mud to form a wall. Each course was eight to ten inches deep and after drying sufficiently, another layer was added.

The Spanish used an earthen mixture for building, but molded the mixture into bricks. The soil was mixed with water, straw, or other fibrous material and was poured into forms used to mold the adobes. Both Spanish and Pueblo Indian used wooden beams, or vigas, for roof construction, which were laid directly on the walls.



Latillas make up the ceiling above the vigas. These were originally cedar poles two to three inches in diameter laid diagonally on the vigas and covered with at least twelve inches of dirt. Cloths or "cielos de manta" were placed under the vigas to catch the falling dirt. These were periodically removed and washed. Another method used to prevent the dirt from falling was to lay salt cedar branches over the vigas and latillas. A coat of mud was then spread and covered with dirt.

Although the same basic building materials were used in housing for both Spanish and

Pueblo Indian, the style which resulted was not necessarily the same. The Pueblo Indian Style is referred to as Pueblo Style. The Pueblo Style might resemble modern day condominiums. The housing for Pueblo Indians was actually a village of multi-storied apartments with setbacks at each level.

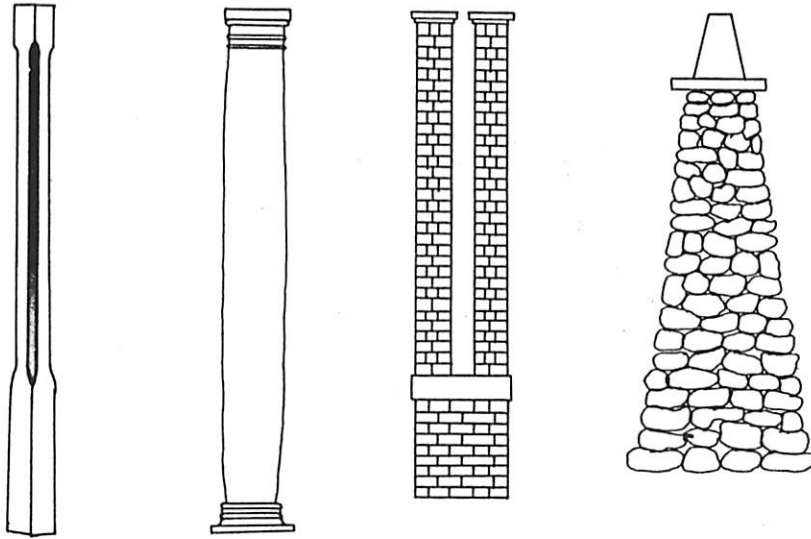


With the early Spanish Style, the house is square or rectangular, one story, and is built around a patio, with very few openings in the outer walls. Later when defensive needs were less acute, portals



were built on the exterior wall, allowing larger windows and additional entrances into the structure. Houses in this style have continued into the present. Many houses in the Guadalupe Neighborhood were built right at the street line in this manner.

The second style of early architecture in Santa Fe is commonly known as Territorial. This style developed during the American Territorial Period in New Mexico in 1846-1912. The Territorial Style is a derivation of the Greek Revival Style, popular on the East Coast during 1820 to 1860. The characteristics of the Greek Revival Style include, classical columns, dentil coursework, pedimented lintels, and balustrades. These details were combined in an overall bilateral symmetry.

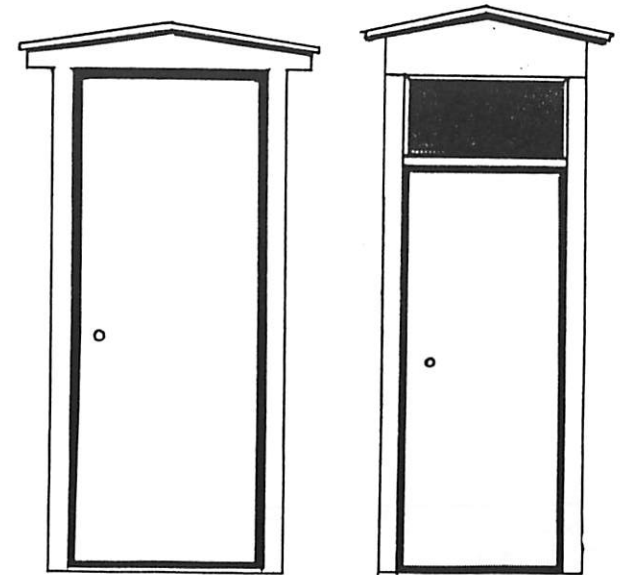


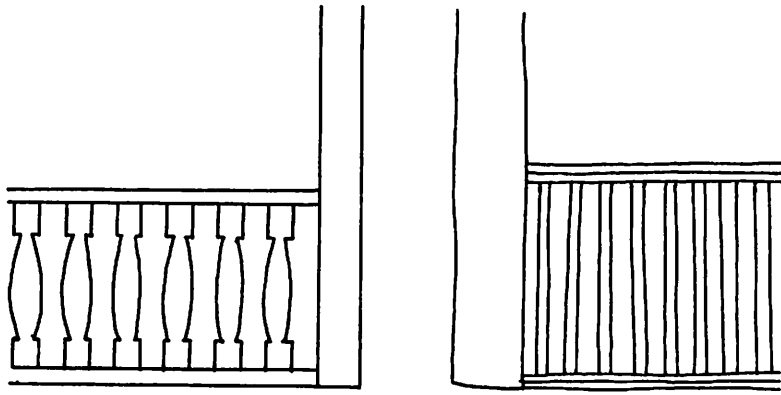
Classical columns were an element which characterized the Territorial Style. Although the true classical column is round and fluted, the Territorial wooden column is usually square and smooth. The base and capital is usually molded, while the sides of the square pillars are chamfered. Other building materials for columns were also used, including brick and river rock.

Brick, like milled lumber, became an important material in the Territorial Style. Brick was used for the dentil coursework which capped the flat roof. However, the roof of a Territorial design house could be pitched in which case brick coping was not used. Some structures incorporated other brick elements such as brick facing, and columns into the exterior design, which was very unusual in New Mexico at



the time. This practice was an influence coming from the Eastern United States. Pedimented lintels over the doorway and windows characterized the Territorial Style structure. The Territorial lintel is a triangular piece of wood which also came from Greek Revival design. Sometimes, a transom window over the front doorway was incorporated into the design of the pedimented lintel. Sidelights, which are long rectangular windows, flanked either





The balustrade, or the railing surrounding the portal, is a Greek Revival feature which came to characterize Territorial architecture. The balustrade can either be a precut piece of wooden railing with decorative design, or it can be a series of rounded poles. The balustrade is usually used on the second floor of a structures portal, but is also used as a decorative element on the first level.

A new floor plan also developed out of the Territorial Style. Usually, the plan of the Spanish-Pueblo Style residence consisted of a row of rooms which were added as the family grew. The plan of the Territorial Style structure, however, was more precise, using bilateral symmetry as a guide. Entrance was through a central doorway, with windows directly opposite each other. In some instances, an irregularity of plan was used, which was an influence from another style.

Although, these are the design elements which came to characterize the Territorial Style, not every one was used simultaneously. What resulted was a combination of the Spanish-Pueblo Style and Territorial Style design elements. Indigenous materials such as adobe and vigas continued to be used but were combined with materials coming in on the railroad including milled lumber. Milled lumber provided more versatility to architecture in New Mexico.

Since Guadalupe Neighborhood was primarily a low and middle income community, the building materials were limited to those readily affordable. Traditionally, due to its low cost and availability, adobe was the main construction material. One of the many advantages of adobe is the ability to adapt to various building styles. As new building materials were brought into the west through new and improved transportation routes, existing homes were improved. The customary flat roof of the adobe structure did not shed rain, and as a result, the leakage often caused deterioration. Means to improve and protect the structure became necessary. The solution, which not only preserved the adobe structure, but also added a new dimension to indigenous architectural design was the introduction of pitched roofs and the use of improved building materials including cement, stucco, brick, milled lumber, and precast metal.

Santa Fe Vernacular

The process by which adobe architecture

developed through three different cultures resulted in styles currently known as Spanish-Pueblo and Territorial. These two types of architecture were developed in the Southwest, becoming a truly regional architecture rather than a design copied from external styles. However, architectural details from these two styles were often combined intentionally either during the initial construction or through later renovation. Many times, Territorial design elements were added to Spanish-Pueblo structures. In other instances, Territorial elements such as pedimented lintels, were dismantled due to weathering. Other individual design elements were incorporated into the style. Readily available river rock was often used for portal columns. Stone or brick designs were painted over the exterior stucco to reflect more up to date building methods. Thus, it became difficult to classify a structure into one particular style. This is the case in the study of Guadalupe Neighborhood where a wide variety of stylistic deviations have occurred. Building designs in the neighborhood are basically derived from the Spanish-Pueblo and Territorial Styles but are individual by their unique ornamentation and invented elements. As such, a new name for this combination of styles is proposed since this is a style unique to Santa Fe. This style will then be referred to as Santa Fe Vernacular.

Basically, Santa Fe Vernacular Style is a combination of the two regional styles

and eclectic design elements. Many of the components of the style are individualistic and while other components related to materials typically mass produced and shipped into the area are incorporated into the structural design. The style is amendable leaving room for individual design, while still preserving the integrity of the regional architecture. Varieties of roof types are common to Santa Fe Vernacular Style, and include flat as well as pitched roofs. Pitched roofs are covered by different materials such as corrugated metal, terne plate, and asphalt roll, while wood shingles, stucco, or wood siding made up the gable. Parapets surrounding flat roofs are varying, including mixtilinear (mision) and undulating (curved) design.

here is also a variety of exterior colors evident which contrasts with the usual earth tones. Porch columns differ from the traditional Spanish-Pueblo and Territorial Style. Some columns in the Santa Fe Vernacular Style are characterized by a river rock pedistal in the form of a pyramid, which show an influence of the Bungalow Style. The pedistal is capped by a square piece of wood which then supports a wood or metal post. Awnings, covered by red clay or metal mission tile sometimes were placed over doors and windows for sun protection and decoration. The combination of these elements with existing methods of construction then make up the composition of Santa Fe Vernacular architecture.

Amendment to the Historical District Regulations

Many of the elements comprising the Santa Fe Vernacular Style do not conform to the regulations of the City Historical District. The specific details of "Old Santa Fe Style" and "Recent Santa Fe Style" as defined and codified in the Historical District Regulations, do not encompass the variations found in the architecture of Guadalupe Neighborhood. Also, the existing Regulations fail to address development issues such as active and passive solar design features which would affect the physical design of a structure.

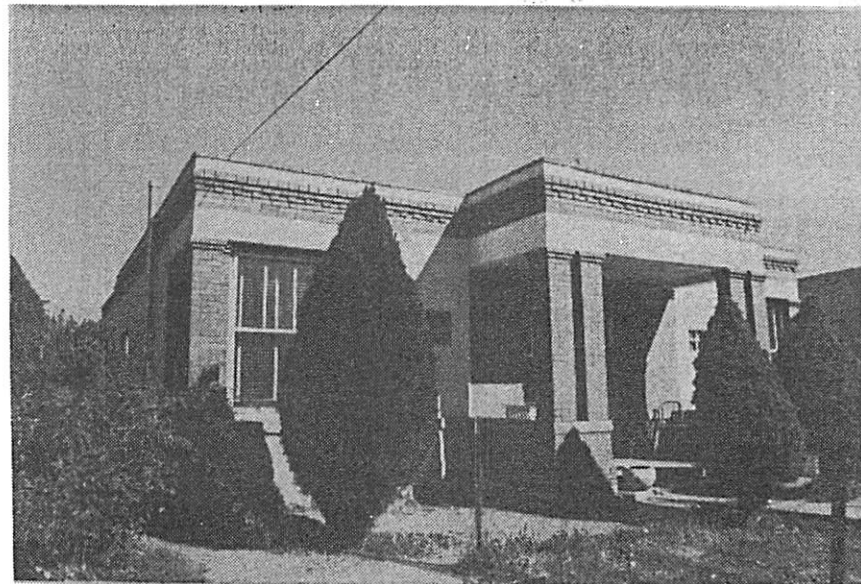
To ensure the preservation of the Guadalupe Neighborhood, a demonstrable historic area, inclusion in a Historical District is necessary. But inclusion in the City's Historic District under the existing ordinance would not allow this preservation. Rather than forcing future modifications to existing homes to conform to the current Historical Regulations, or writing another ordinance for the area, amendment of the Regulations to include Santa Fe Vernacular Style only in the Guadalupe area, would be a more logical step. Inclusion of Guadalupe Neighborhood District would protect the area as a historic residential neighborhood, and would be consistent with City's policy of preservation of historical areas and buildings.

Structures Nominated for the State Register of Cultural Properties

Following then, are structures nominated

to the State Register of Cultural Properties. The structures are classified according to the recognized architectural style of which they are most closely representative. For each nomination, physical appearance and historical importance are briefly documented, along with significant dates pertaining to the history of the structure.

Property Name: Adolfo Montoya Residence
Location: 447 W. San Francisco
Present Use: Private Residence
Physical Condition: Excellent
Ownership: Adolfo Montoya - 447 W. San
Francisco, Santa Fe, N.M. 87501
Thematic Classification: Architecture
Style: Territorial
Year of Construction: c. 1900



Physical Appearance: This is an elaborate example of the Territorial style. Although the true Territorial style uses milled lumber as exterior decoration, this structure substitutes red brick to achieve the same effect. It is one story and constructed with cinder block. The facade is symmetrical. The portal extends over the front entrance, and is supported by twin brick columns on either side. The columns are a typical Territorial design element, modeled after the classical doric column. Other columns are on either side of the front windows, an unusual treatment for this style.

The front doorway is also very symmetrical, and includes an oval transom window, with sidelights set against the door. Block glass rectangular windows flank each side of the portal. Highly decorative brick coping trims the flat roof. Another course of dentil brickwork is directly below the trim. The structure was constructed in 1900.

Historical Importance: The importance of this structure lies with its unique architecture. At the time of its construction, it was unusual to decorate the exterior of structures with red brick. Red brick was only used as coping over Territorial style buildings. The Territorial style was originally derived from Greek Revival architecture. This structure shows more specifically the features from Greek Revival style. The elements the structure incorporates include the classical columns, the dentil coursing, the sidelights, the flat roof, and the bilateral symmetry. The simple rectangular block form combined with the classical features add to the temple effect of the building. The structure appears on the King's Map of 1912.

Property Name: Calles Apartments

Location: 406 W. San Francisco

Present Use: Private Residence

Physical Condition: Good

Ownership: Eloy Calles 720 E. Palace
Santa Fe, N.M. 87501

Thematic Classification: Architecture

Style: Territorial

Year of Construction: 1900



Physical Appearance: This is one story concrete block structure faced with red brick. The style is a variation of Territorial design. There is tile awning over the double hung wood frame windows. This structure is a combination of two styles. The plan of structure is influenced by the Queen Anne style. The plan is asymmetrical and irregular, with a side porch. The turrent comes directly from this style.

The flat roof is capped by brick dentil coping, a Territorial design element. The entire structure is brick faced.

The structure appears on the 1912 King's Map and is believed it was constructed sometime between 1900 and 1912.

Historical Importance: This structure is architecturally significant. Although the exterior design is Territorial the plan is not characteristic of this tyle. The turrent is very unusual for this design, and is uncommon in New Mexico.

Since the building appears on the 1912 King's Map, the age is an important factor. The style is influenced by East Coast design which was made possible by the coming of the railroad. The structure is rumored to have been a bordello in the early history of Santa Fe.

Property Name: Jose Guadalupe Romero

Location: 450 W. San Francisco

Present Use: Private Residence

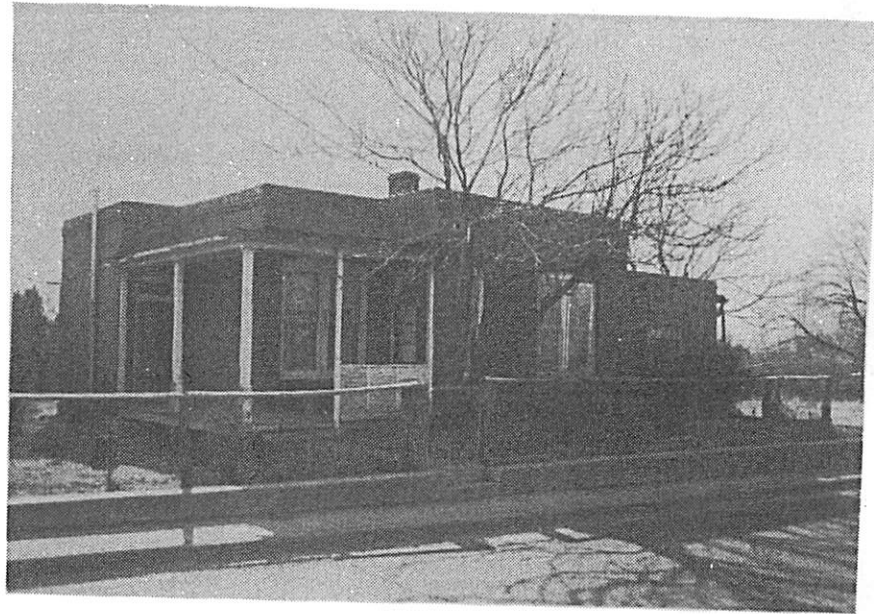
Physical Condition: Good

Ownership: Hilario E. Romero
450 W. San Francisco
Santa Fe, New Mexico 87501

Thematic Classification: Architecture

Style: Territorial

Year of Construction: 1900



Physical Appearance: This structure appears on the 1912 King's Map and is assumed that the date of construction was sometime between 1900 and 1912. The architecture is uncommon to the area and is a combination of different styles. The basic plan strongly resembles the plan of the Queen Anne design which is asymmetrical, irregular, and features a wrap-around side porch with wood floor. The doors have transoms and the double hung two-over-two windows are topped by segmental brick arches.

The exterior design includes Territorial style elements such as the square portal posts with chamfered corners. The flat roof is capped with projecting brick headers simulating Greek Revival classical dentils.

An addition on the west end of the structure was constructed in the 1950's and does not blend itself with the original part of the architecture. This part is plastered and the windows are metal frame casement.

Historical Importance: This structure is architecturally significant not as an example of one particular style, but of a combination. Basically the design is Territorial, but eastern influence is obvious. The plan of the structure is very unusual in New Mexico as is the red brick exterior. The irregular plan adds a variation to traditional New Mexico architecture. The segmental arched windows are also important as they are uncommon to native architecture.

Overall, the structure is unique to both Santa Fe and New Mexico. The design is unique and serves as an example of architecture that came in with the railroad. The transoms, wooden porch floor, and brick exterior are part of this design.

Property Name: Chavez Apartments

Location: 532-38 Agua Fria

Present Use: Private Residence

Physical Condition: Fair

Ownership: Francisita Chavez - 532 Agua Fria
Santa Fe, N.M. 87501

Thematic Classification: Architecture

Style: Territorial

Year of Construction: 1920



Physical Appearance: This is a one story adobe structure faced with red brick. The windows are double hung wood frame with segmental arches. The doors have transoms. The entire structure is faced with brick. It was constructed about 1920 and first appears on the County Assessors records on 1921. It is built in the traditional placita style of building directly on the street line.

Historical Importance: This property is important because of the unique architecture in the area. Although it does not fit into one particular style it represents a variation of the traditional adobe design in the area. The age of the structure is about 60 years. The structure is typical of architecture found on the East Coast. It is not common for adobe structures, such as this, to be faced with red brick. This was influenced by East Coast design. The structure which is divided into three apartments and can be documented to 1921.

Property Name: Access Incorporated

Location: 318 Guadalupe

Present Use: Commercial

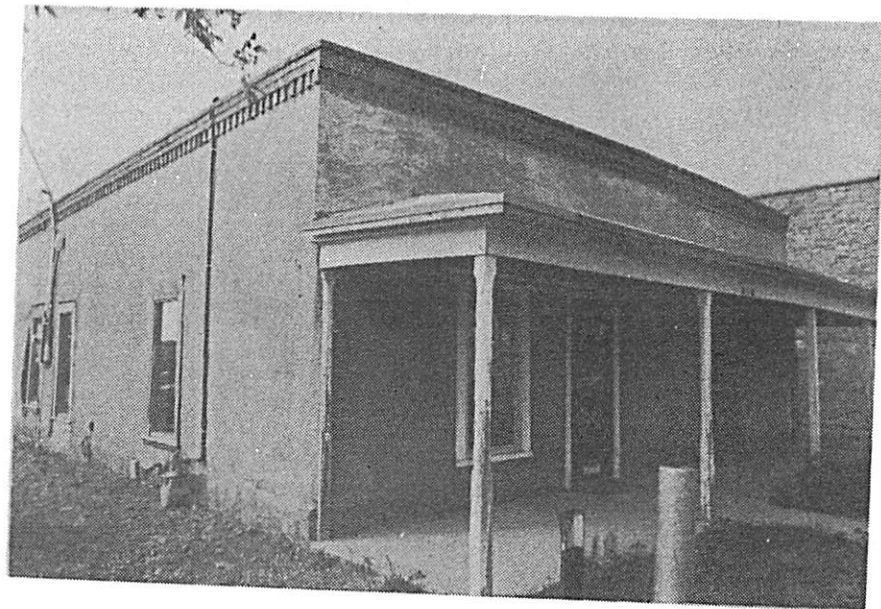
Physical Condition: Excellent

Ownership: Mrs. Nichol Plett - c/o 318
Guadalupe Santa Fe, N.M. 87501

Thematic Classification: Architecture

Style: Territorial

Year of Construction: 1880



Physical Appearance: The structure is a good example of the Territorial style. It is a one-story flat roof structure capped with brick coping. The front portal is supported by solid square posts with chamfered corners on the south end of the structure. The north part of the structure is an addition, but it is not known when this part was added. However, the current plan of the house is the same as the plan on the Stoner Map of 1882, the Hartman Map for 1886, the 1912 King's Map, and the most recent Sanborn Map. The date of construction, then is estimated to be 1880. It is strongly possible that at one time the house was two separate structures. Minor differences in the coping and porch posts indicate this division.

The original window and door frames are intact but the glass and doors have been replaced. The exterior surface has recently been stuccoed.

Historical Importance: The importance of this property lies with the age which can be traced positively back to the Stoner Map of 1882. This makes the house almost 100 years old.

Besides the age value of the structure, the owner at one time was very significant in the events of the City. John Dendahl migrated to Santa Fe from Germany and founded Dendahl's Department Store at 129 W. San Francisco which was earlier a dry goods store.

Dendahl was active in civic affairs and was appointed by Judge John R. McFie as a U. S. jury commissioner for the First Judicial District. Dendahl acted with Francis C. Wilson, clerk of court, to supply additional names for the Federal jury box.

John Dendahl's son, Henry was also a prominent Santa Fe resident. He joined his father's business and was a member of the Board of Directors for First National Bank, and Charter Member of Kiwanis Legion of Honor.

Property Name: Leo Kahn House

Location: 733 Agua Fria

Present Use: Recreation Hall

Physical Condition: Fair

Ownership: Leo Kahn - 208 Corona
Santa Fe, N.M. 87501

Thematic Classification: Architecture

Style: Territorial

Year of Construction: 1872



Physical Appearance: According to the City Deeds, this structure was constructed in 1872. The owner has also verified that it is over one hundred years old. It is an example of Territorial style of architecture.

The structure incorporates such classical features as the bonded cornice capping the flat roof. Classical doric columns support the long front portal. Long low-relief double hung windows surround the house. The adobe walls are covered with white stucco. The plan of the house is long and the central hallway opens up to the separate rooms. The house is currently being remodeled.

Historical Importance: It is estimated this structure was constructed in 1872. However, County Assessors records show it was first assessed in 1900. It is on the King's Map of 1912.

Because of its age value, the home is important as it is one of the first structures to employ Territorial design elements. However, the design of this structure features classical properties which are unique to this style. The highlight of this structure is its portal which borrows from the Georgian Revival design. The classical cornice also is influenced by this design. The house serves as a unique example of a variation of early Territorial architecture.

It is one of the first houses on the historic Camino Real. At one time, in the early history of the house, its owner Francisco Real, ran an Ice Cream Parlor from the house, and also sold ice cream by horse and wagon.

Property Name: Perry Rental House

Location: 421 Agua Fria

Present Use: Private Residence

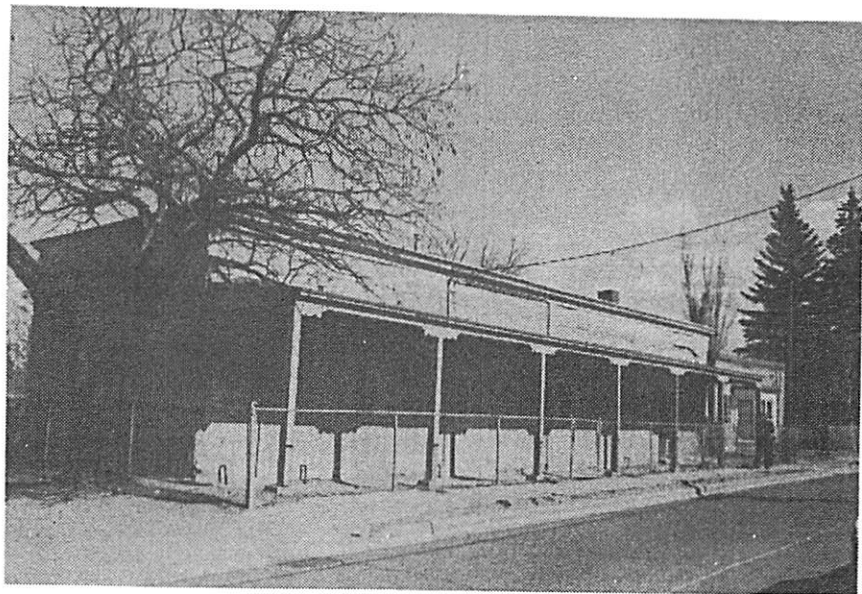
Physical Condition: Good

Ownership: Tom Perry - 518 Agua Fria
Santa Fe, N.M. 87501

Thematic Classification: Architecture

Style: Territorial

Year of Construction: 1880



Physical Appearance: This structure is a good example of the Territorial style. The plan of the house is rectangular and is set directly on the street line. The typical features included here are the front door with sidelights, the long front portal, and the bonded cornice. This structure was constructed about 1880 by a Frenchman, whose name is not currently known. The builder utilized new construction methods. The shed roof was made possible by the use of milled lumber. The facade is plastered and then was painted to simulate cut stone.

Alterations to the house have destroyed these original features. Aluminum frame sliding windows have replaced the original wood frame double hung windows, and also a front doorway. The painted plaster has also been destroyed by these replacements. The existing portal has also replaced the original portal. A chain link fence has separated the house from the street. All these alterations have occurred within the past year. The basic material of the structure is adobe. The house appears on the 1912 King's Map.

Historical Importance: This property is important not only because of its age and distinct Territorial style, but also because this structure incorporated unique physical qualities.

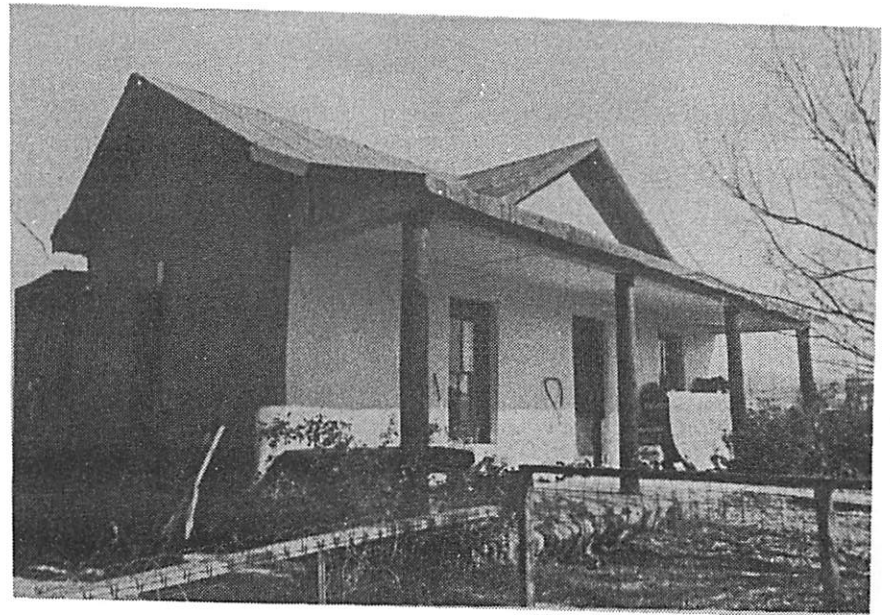
The simulated stone was an important detail which became popular around 1885. The practice of painting over plaster was modeled after building styles on the East Coast and became popular as an alternative covering for the traditional mud covered walls. Other buildings were treated in the same manner. The Exchange Hotel, on the site where La Fonda now stands, had a similar facade, as did the Palace of the Governors.

The construction of this structure includes a new development in New Mexico architecture, the use of a shed roof. This is one of the first structures to employ this method. The roof is trimmed with a classic cornice which is unusual for the area.

Another area of importance is that the structure is built in the traditional placita-style of locating the house directly in line with the street. Although the owners claim the home was built in 1880, it first appears on the 1912 King's Map.

It is hoped that any future alterations to the home will attempt to restore the original Territorial qualities. Originally, the house contained double hung wood frame windows with pedimented lintels. The portal was slanted and was supported by squared posts.

Property Name: Philip A. Lewert House
Location: 701 W. Manhattan Avenue
Present Use: Private Residence
Physical Condition: Excellent
Ownership: Philip A. Lewert - 701
W. Manhattan Santa Fe N.M. 87501
Thematic Classification: Architecture
Style: Santa Fe Vernacular
Year of Construction: c.1880



Physical Appearance: This structure, fronting railroad property, is an example of Santa Fe Vernacular Style which became popular with the coming of the railroad. Precut lumber made possible new forms and plans, thus revising the Spanish-Pueblo and Territorial Styles. The style of this structure strongly resembles the original Fort Marcy Officer's House c.1873. The walls are constructed with adobe. The high pitched roof with front gable is typical of the Santa Fe Vernacular Style, as well as the portal. A clinker brick chimney extends from the roof. The double hung wood frame windows are symmetrical to the windows on the opposite side of the house. The interior of the structure contains ten foot high ceilings and oak floors. This structure was probably constructed when the railroad arrived in 1880. The roof may have been covered with ternplate and the windows located were on the side and front gables.

Historical Importance: The use of milled lumber made possible the first type of architecture alien to New Mexico. This style was combined with existing materials and methods to form a style known as Santa Fe Vernacular. Local building materials such as adobe and log posts were combined with eastern architectural styles. This structure exemplified the end result.

The location of the house represents another turning point for the City, the railroad, which raised property values and encouraged building in an area which had not been previously used.

Property Name: Catanach Home

Location: 722 Agua Fria

Present Use: Private Residence

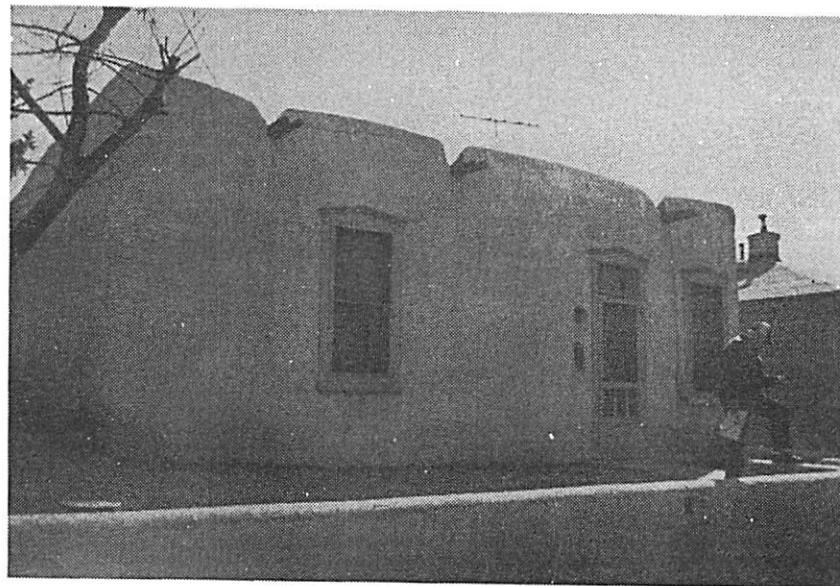
Physical Condition: Excellent

Ownership: Edward Catanach - 722 Agua Fria
Santa Fe, N.M. 87501

Thematic Classification: Architecture

Style: Territorial

Year of Construction: 1920



Physical Appearance: This structure, facing historic Agua Fria Street, has remained in the Catanach family since its original construction in 1920. The historical significance of the structure contributes to the architectural development of the neighborhood. The architecture is in keeping with the Territorial streetscape of the narrow street, while still maintaining its individual character.

Historical Importance: This one story structure is an example of Territorial style architecture. It features a facade containing traditional Territorial design components. The double hung wood frame windows are trimmed with wooden pedimented lintels as is the door, which also includes a transom window. The flat roof is capped by a parapet with grooves for metal rain gutters. The thick adobe walls are exteriorly covered with white stucco. The construction date is estimated to be 1920.

Property Name: Coriz Residence

Location: 635½ W. San Francisco

Present Use: Private Residence

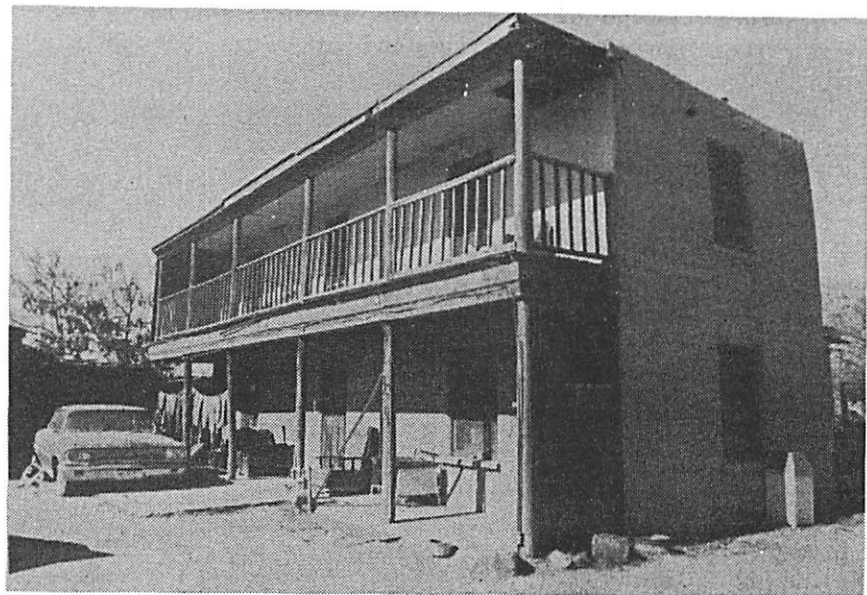
Physical Condition: Fair

Ownership: Ramon Coriz - 635½ W. San
Francisco Santa Fe, N.M. 87501

Thematic Classification: Architecture

Style: Territorial

Year of Construction: 1925



Physical Appearance: This is a two story Territorial style structure. The wall construction is adobe and is stuccoed. The roof is flat. The house contains double hung wood frame windows. The front two story portal is supported by round posts. The second story portal has a balustrade in between the posts. The exact date of construction is not known but it was constructed before 1928. It is not in good condition and is in need of repairs.

Historical Importance: This is a very good example of two story Territorial architecture. There are very few examples of this type in the surveyed area. Most buildings of this type are one story. The importance, then, lies in the architecture of the structure.

Property Name: Ortiz Apartments

Location: 719 Dunlap

Present Use: Private Residence

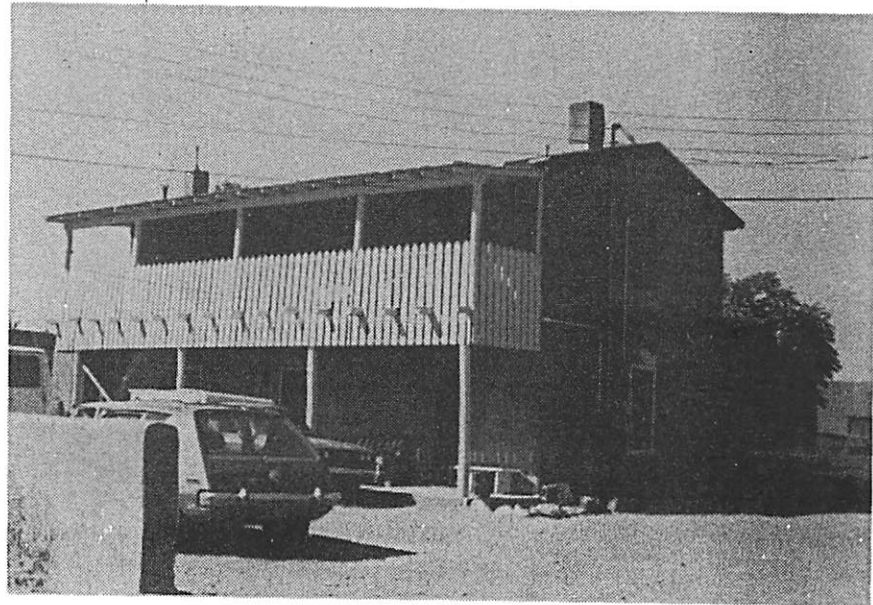
Physical Condition: Good

Ownership: Willie J. Ortiz - 345 Delgado
Santa Fe, N.M. 87501

Thematic Classification: Architecture

Style: Territorial

Year of Construction: 1900



Physical Appearance: This two-story Territorial style structure is constructed of adobe and coated with stucco. The main architectural features are a pitched corrugated metal roof, double hung windows, and a second story full length balcony which, according to photos of the structure c. 1905-1910, is not original. These photos are earliest documentation of the building, and also appears on the 1912 King's Map.

Historical Importance: Because of the lack of two-story Territorial style buildings in the survey area, the importance of this building lies in the architecture of the structure. Since most Territorial style buildings are one-story, it is a prime example of two-story Territorial architecture, dating from the turn of the century.

Property Name: Eva Garcia Residence

Location: 508 Alto

Present Use: Private Residence

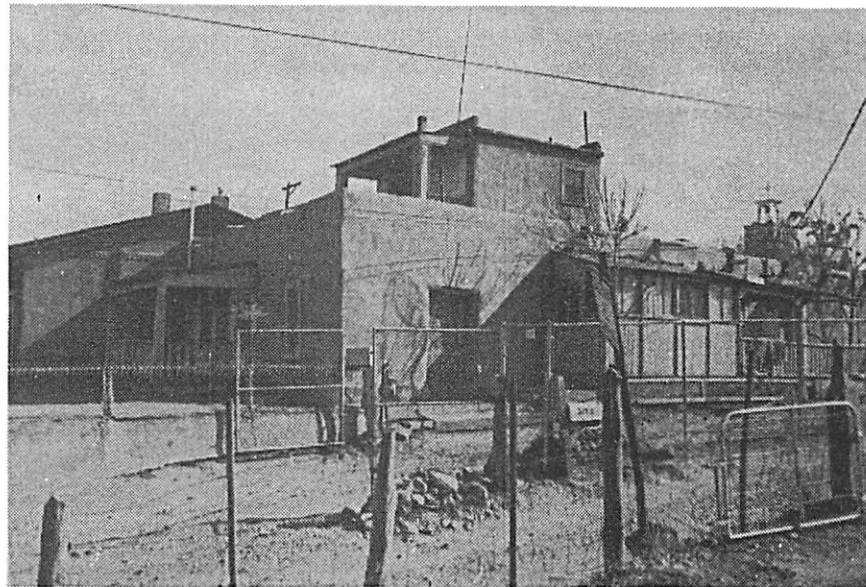
Physical Condition: Good

Ownership: Eva Garcia - 508 Alto
Santa Fe, N.M. 87501

Thematic Classification: Architecture

Style: Territorial

Year of Construction: 1880



Physical Appearance: This structure is a two story Territorial adobe structure. The second story is stepped back and projects from the central part of the house. Both floors have flat roofs with curved parapets. Metal canales extend from the front of the structure. Both levels have front portals with balustrades set between squared posts. The portal on the first level contains wooden floors. The double hung wood frame windows and doors are framed with pedimented lintels, characteristic of Territorial design. The brown exterior stucco contrasts with the whitewash against the portals. The structure is estimated to be constructed in 1880, while the second floor was added at a later date.

Historical Importance: The importance of this structure lies with the design which although is Territorial, was originally native Pueblo style. The coming of the railroad in 1880 allowed individuals to employ new construction methods with new building materials. This also allowed existing homeowners to remodel with milled lumber, which arrived by railroad. This structure is a historical example of Territorial design elements used on indigenous architecture. The structure has since maintained the original Territorial character.

Property Name: Davidson Residence

Location: 714 Agua Fria

Present Use: Private Residence

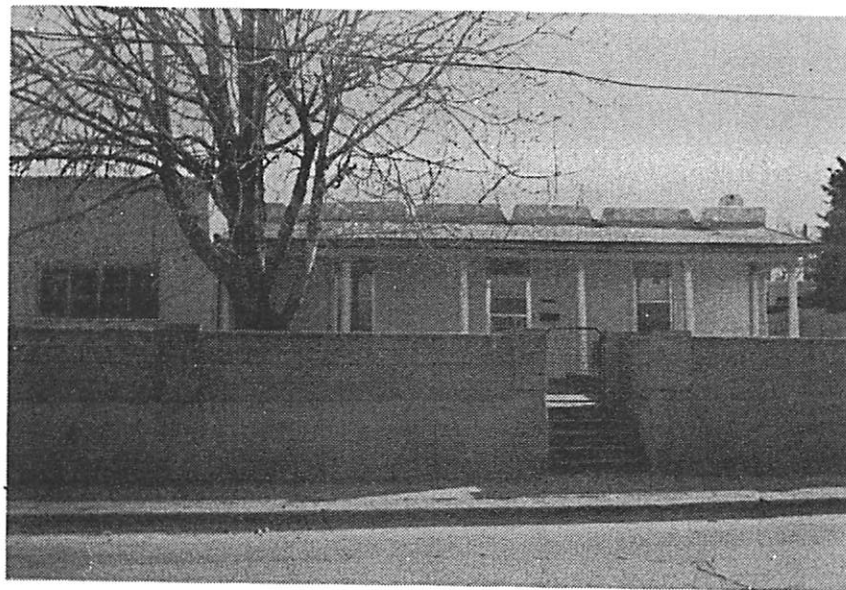
Physical Condition: Excellent

Ownership: Sam Davidson - 714 Agua Fria
Santa Fe, N.M. 87501

Thematic Classification: Architecture

Style: Territorial

Year of Construction: 1900



Physical Appearance: This structure appears on the 1912 King's Map on Agua Fria Street. Basically, the structure is an example of a one-story Spanish-Pueblo Style of architecture with Territorial design elements added at a later date. The flat roof is surrounded by a parapet with a series of indentations in which are set the wood canales. The most notable feature of this structure are the unique classical Corinthian columns supporting the front portal. The wood columns are highlighted by the carved capitals which feature scroll and leaf designs. They are painted white, which is in keeping with the whitewash exterior of the adobe structure. The original double hung wood frame windows have been replaced with aluminum frame windows. However, the original door, with transom window, is still in place.

Historical Importance: The historical significance of this structure lies with its unique architectural qualities. The style illustrates how local indigenous architecture incorporates elements from Greek Revival design. Usually, classical columns used in Territorial architecture were more simple in style, reflecting local milling techniques and available materials. The lavish classical columns are very unique and unusual as a Territorial design element. In this case, the classical columns were shipped into Santa Fe, thus adding a new dimension to local architectural form and design. The end effect of combining classical features to the rudimentary structural design illustrates the uncommon effect and ultimately, is an example of the long development of adobe architectural design.

Property Name: Conklin Estate

Location: 434-36 W. San Francisco

Present Use: Private Residence

Physical Condition: Fair

Ownership: Philip Sandoval - 436 W. San
Francisco Santa Fe N.M. 87501

Thematic Classification: Historical Figure

Style: Spanish-Pueblo

Year of Construction: 1850



Physical Appearance: These three structures were originally one residence for the Conklin Family. In its original state the adobe structure was built along the San Francisco street line. The plan was long and rectangular with doorways that opened directly onto the street, typical of the Spanish-Pueblo style. The roof, in its original state, was flat.

The structure was divided in the 1930's. Many alterations to preserve the structures include the pitched gabled roof on the two western structures. The roof on the east end remains flat. Windows on all the structures are double hung wood frame. It is estimated the original building was constructed c. 1850.

Historical Importance: This property is important because it is associated with the Conklin Family who were well known citizens of Santa Fe. According to the Cragin Papers, documented from oral interviews, James Conklin, originally from Canada, moved to New York, then to St. Louis, and finally came to Santa Fe by wagon train in June 1821. He then opened a general merchandise store in Santa Cruz and operated it for about three years. He then opened a store in Santa Fe, where he remained for the rest of his life.

James Conklin became a prominent citizen of Santa Fe and is often quoted in historical accounts of the City's growth. He married Juana Ortiz, a native Santa Fean. James Conklin later served as interpreter to Col. J.M. Washington at the time of his campaign against the Navajos in 1849.

James and Juana Conklin had six children, all of who died except for Charles M. Conklin, who inherited the family estate. Charles was elected sheriff of the County of Santa Fe in 1871 and served for six years. In 1881, Conklin was elected Clerk of the Probate Court in which he served two years. In 1891, he was appointed by the County Commissioner as Sheriff and Tax Collector for the County, to fill a vacancy, which at the expiration of the term he was elected to that office. However, Conklin was removed after several incidents in office.

Charles Conklin collected taxes which were to go into the school fund but failed to pay the sum to the authorities. He would also allow individuals who were arrested to be set free if they agreed to vote for the Republican ticket.

Property Name: Roybal Apartments

Location: 673 San Francisco Street

Present Use: Private Residence

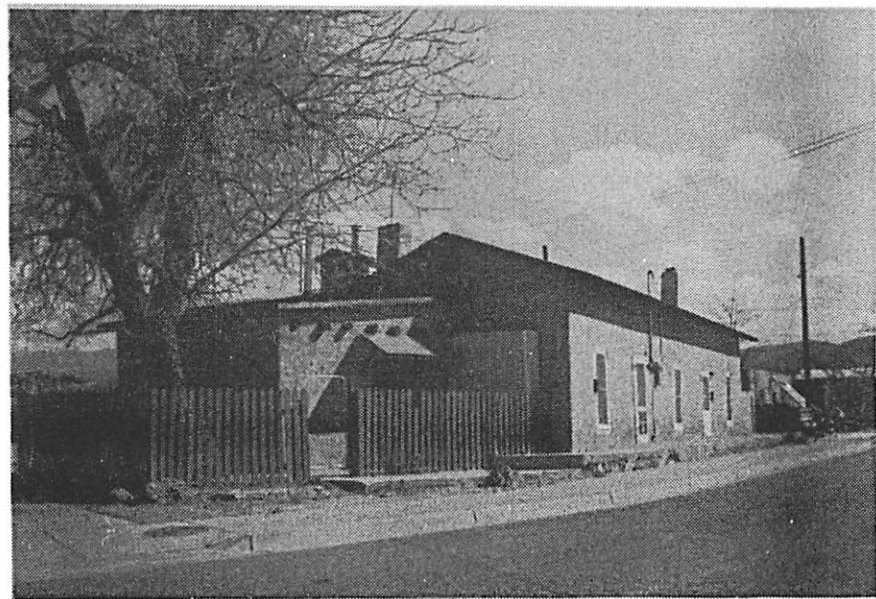
Physical Condition: Good

Ownership: Violeta Roybal - P.O. Box
1903 Santa Fe, N.M.

Thematic Classification: Architecture

Style: Territorial

Year of Construction: 1880



Physical Appearance: Though there are no documented sources of the date of this structure, the present owner, whose great-uncle built the house as a newlywed, claims it dates to c. 1880. The house appears on the 1912 King's Map. A field inspection yielded that the building is a prime example of indigenous Spanish-Pueblo style architecture. Hand sawn vigas now support the pitched roof, which originally was flat. The stuccoed adobe walls contain interior pedimented lintels over double hung windows. It is highly unusual for pedimented lintels to be placed in the interior. This Territorial design element usually decorated the exterior of the structure. However, they were incorporated into the interior doors and windows of this particular structure. An addition was added onto the western end and rear of the building, making the plan "L" shaped.

Historical Importance: The main significance of this structure is in the architecture itself. It is a fine example of indigenous Territorial Style architecture. When constructed, this building was the only structure in the area of lower San Francisco Street. The Sandoval family, who built the house, were prominent in Santa Fe. The family donated land to the Archdiocese of Santa Fe for the sites of Loretto Academy and Rosario Cemetery. The surveyed house has been kept in the family since its construction in 1880.

Property Name: Quintana House
Location: 573 San Francisco Street
Present Use: Private Residence
Physical Condition: Good
Ownership: Helen Quintana 573 San
Francisco Santa Fe, N.M. 87501
Thematic Classification: Historical Figure
Style: Spanish-Pueblo
Year of Construction: 1859



Physical Appearance: According to the abstract of the present owner, the house was first sold in 1859, which makes it at least 122 years old. At that time, the house consisted of sixteen rooms, six hallways, two corrals, a placita, patio, garden, and was surrounded by a wall. the one-story adobe building is an example of early New Mexico indigenous Spanish-Pueblo architecture, The double hung wood frame windows and doors are not original.

According to the owner, the plan of the house has not changed since it was first built and there have been few minor alterations.

Historical Importance: The house was originally built by Don Miguel E. Pino and Facundo Pino, prominent and well known New Mexican citizens of the 18th and 19th centuries. Don Pedro is most famous for being New Mexico's only representative to the Spanish Cortez in 1810. Don Miguel and Facundo were both involved in the campaign against the American military occupation of New Mexico in 1846. After being arrested and jailed they became loyal citizens to the United States government. As a colonel during the Civil War, Miguel led the Second Regiment, New Mexico Volunteer Infantry, against the Confederacy forces at Valverde. The Pinos were also involved in the Territorial politics of the period. Facundo was president of the Legislative Council in 1861, while Miguel was President in the sessions of 1865 and 1866. Ralph Twitchell in his book Military Occupation of New Mexico (Chicago: 1909) describes Miguel as "the greatest statesman of his day in New Mexico."

Property Name: Fullerton Property

Location: 418 Montezuma

Present Use: Commercial

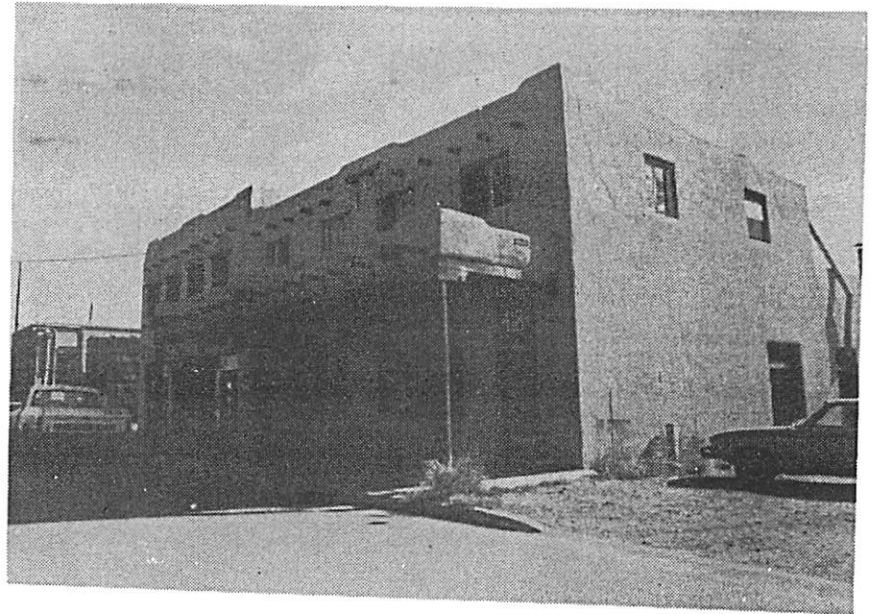
Physical Condition: Excellent

Ownership: Reese Fullerton - 418 Montezuma
Santa Fe, N.M. 87501

Thematic Classification: Architecture

Style: Spanish-Pueblo Revival

Year of Construction: c.1900



Physical Appearance: This is a two-story brick, Spanish-Pueblo design building. The roof is flat with projecting vigas. The front portal is supported by rounded logs and also has projecting vigas. The structure is connected to other buildings which were initially constructed as warehouses to store supplies coming off from the railroad. It was constructed in 1900, and appears on the 1912 King's Map.

Among the businesses located in the building is a theatre, two stores, a cafe, and a crating service.

Historical Importance: The structure is important to Santa Fe as it is one of the first structures built to accommodate the railroad. Supplies coming from the East Coast were unloaded and distributed here. It was also a bottling works plant and a motion picture studio.

Property Name: Montoya Residence

Location: 202 Closson

Resent Use: Private Residence

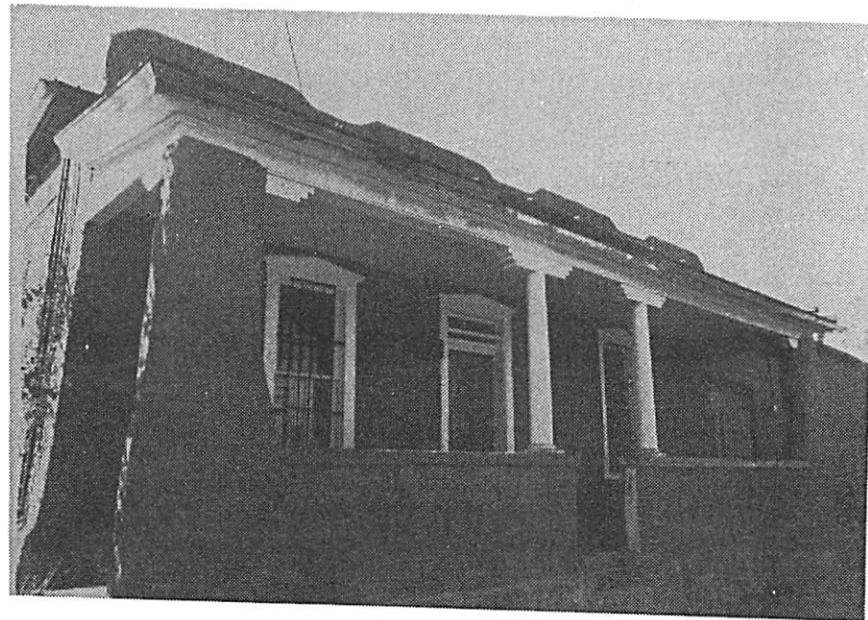
Physical Condition: Excellent

Ownership: Loui and Marge Montoya - 202 Closson
Santa Fe, N.M. 87501

Thematic Classification: Architecture

Style: Territorial

Year of Construction: 1877



Physical Appearance: Construction of this structure was in 1877. The design is Territorial and is characterized by the classical columns and corbels supporting the front portal. The flat roof is capped by an undulating parapet. The adobe walls are 3½ feet thick and surround an interior placita. The front windows and doorway are original and are trimmed with pedimented lintels. the front doorway also includes a transom.

Alterations that have taken place include replacement of the windows on the north-east portion with aluminum frame windows.

Historical Importance: The original residents of this structure were Jose D. Sena and Don Marcelino Garcia who were good friends. Both their families occupied the same house.

Jose D. Sena was born in Santa Fe in 1835. His educational training was in Santa Fe and Albuquerque. During the Civil War, Sena was appointed Captain and later Major of his regiment. He participated in the battles of Glorieta, Peralta and Valverde. In 1853 Sena became active in politics and accompanied Jose M. Gallegos as a delegate to Congress in Washington, D. C. and served as a private secretary and interpreter. In 1865 Sena served as sheriff in Santa Fe County for 22 years and was a successful attorney. He studied law in Alexandria, Virginia, and was later appointed Registrar of the Land Office. He was chief organizer of the San Francisco Society in Santa Fe.

Garcia was born in Santa Fe on April 25, 1855. He received his education at St. Michaels College. He began working as a clerk in a store in 1872 where he worked until 1874, when he was employed in the County Clerks office. In 1880 he served as interpreter for the Pueblo Indian Agency. He opened a general mercantile store in Rio Pudico and in 1885 accepted a position as Deputy Clerk of Santa Fe County. He also served as Deputy Sheriff and Tax Collector for the County. In 1892, when the City of Santa Fe was incorporated he was elected a member of City Council. In 1895 Governor Thornton appointed him auditor of the Treasury of the Territory.

Closson Street was originally Garcia Street but was changed during a political dispute between Mr. Closson and Marcelino Garcia. The house exists on the King's Map of 1912.

Property Name: David Baca Home

Location: 738 Agua Fria

Present Use: Private Residence

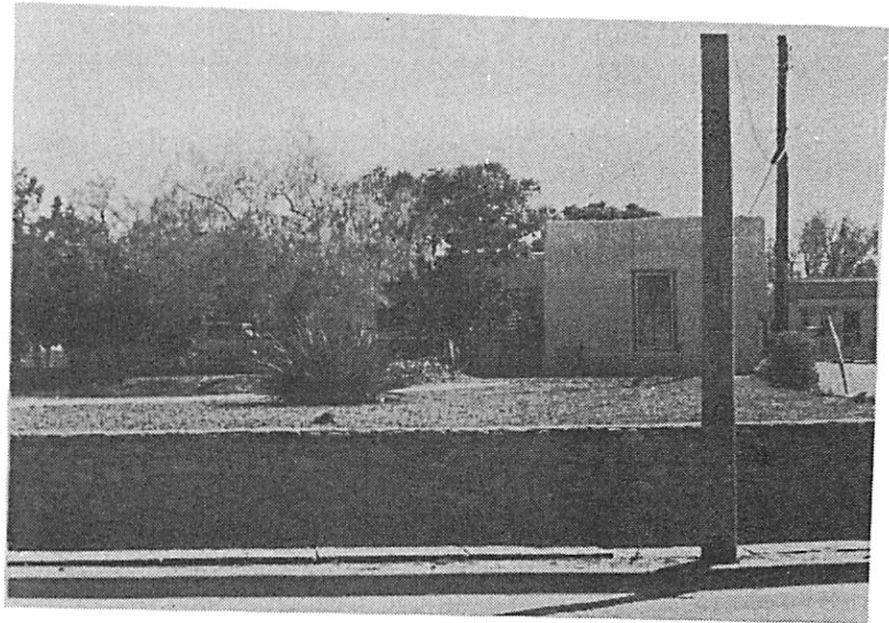
Physical Condition: Excellent

Ownership: David Baca - 738 Agua Fria
Santa Fe, N.M. 87501

Thematic Classification: Architecture

Style: Spanish-Pueblo

Year of Construction: 1883



Physical Appearance: This structure was constructed in the early 1800's according to the owner. However, the earliest recorded date of the residence is a deed dated June 6, 1883. The architecture of the structure is Spanish-Pueblo, with limited features, but nevertheless, characteristic of this style. The basic materials of the structure consist of a stone foundation, with adobe walls, and log beams supporting a flat roof, with rounded parapet. The low relief wood frame double hung windows are original, as well as the Territorial wood trim.

Alterations to the residence include room additions to the rear, which were expanded as the family grew. However, these additions occurred before 1912, as the King's Map from that year indicates the same plan.

As it appears on the aerial for 1978, the additions separated the home into four family residences. Other alterations include stucco over the mud plaster, reinforcement of stone foundation with concrete, replacement of wood canales with metal gutters, and replacement of dirt covered roofs with plywood. All these alterations have been to preserve the home.

Historical Importance: The importance of this property serves as an example of the typical early Hispanic family lifestyle. The original owners of the home were Marcos and Nicolasa Gutierrez, grandparents of the present owner. As the children of the original owners grew the house was expanded and divided to accommodate the grandchildren and their families. The four dwellings share common walls. This represents the solidarity of the extended Hispanic family.

The architecture of the residence also characterized the early Hispanic family. The construction material comes directly from the immediate environment, including stone, adobe and vigas. These materials warranted special cleaning habits. The dirt floors were cleaned by sprinkling with water and then sweeping with straw brooms. The ceilings were covered with cloth or "cielos de manta" to catch the dirt falling from the two foot thick dirt covered roofs. These mantas were taken down, shaken out, washed, and then tacked back up, a very difficult and strenuous practice.

The house is situated on Agua Fria, which was the famous Camino Real, the trail from Santa Fe to El Paso. The present driveway of this home was originally an entrance for horses and wagons in the early 1800's.

Property Name: Williams House

Location: 425 W. San Francisco

Present Use: Private Residence

Ownership: Mrs. Flora Williams 425 W. San
Francisco Santa Fe, N.M. 87501

Thematic Classification: Architecture

Style: Territorial

Year of Construction: c. 1780



Physical Appearance: According to the owner, the age of this house is over 200 years old. It was first assessed by the County in 1880 which makes it at least 100 years old. It is a one story adobe structure. It is an example of early New Mexico indigenous Pueblo architecture. The brick coping was added at a later date and is characteristic of Territorial design. The double hung wood frame windows are not original.

The plan of the house, as it exists today is simple, following the early plan which consists of three rooms in a line without a central hallway. Additions were made on the structure, and at one time, the house was expanded and divided into four residences with common walls. The plan of the house in 1912 was "L" shaped and was the residence of Alberto B. Martinez, Genaro Archuleta, Isaac Harrison, and Trinidad Chaves. All but one part of the house has been demolished and there is evidence on the west side of the house which no longer exists.

Historical Importance: This is a fine example of early Spanish-Pueblo style architecture which has survived modern development in Santa Fe. The age of the structure can be documented to the 1880 County Assessors records and also appears on the 1882 Stoner Map, the 1886 Hartman Map, and the 1912 King's Map.

The structure is in desperate need of repairs if it is to be preserved as an example of early Santa Fe indigenous architecture.

Property Name: Jefferson Place

Location: 110 Guadalupe

Present Use: Commercial

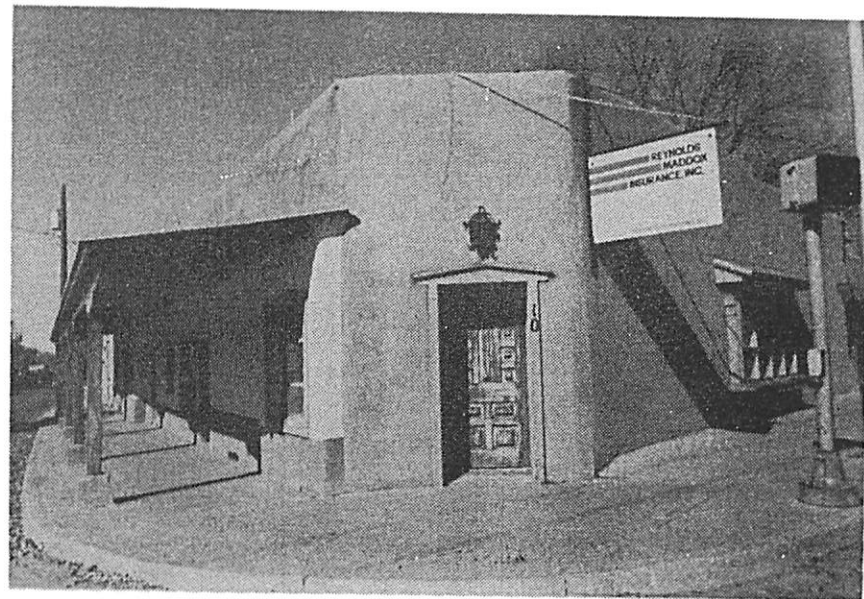
Physical Condition: Excellent

Ownership: Baing Enterprises - P.O. Box 1796
Santa Fe, N.M. 87501

Thematic Classification: Architecture

Style: Spanish-Pueblo Revival

Year of Construction: 1900



Physical Appearance: This structure, at the corner of Guadalupe Street and San Francisco, has been altered since its original construction. When it was first built, about 1900, the structure was a simple Spanish style placita with thick adobe walls and a flat roof. It was later remodeled into the Territorial style with elaborate pedimented lintels over the twin double hung windows. Brick coping trimmed the parapet. The structure was built around a patio, but the east part of the structure was demolished to make way for the widening of Guadalupe Street.

In its present state, the structure is remodeled back to the Spanish-Pueblo style. The plan is now "L" shaped with portals lining the interior courtyards as well as the part facing San Francisco Street. The portals are supported by squared columns with corbels.

The original windows have been replaced with contemporary storefront paned windows. The brick coping has been replaced with a curved parapet. Projecting vigas extend from the interior portal. The structure has been converted to office space.

Historical Importance: The importance of this structure lies with its age, which can be dated back to 1900, according to County Assessors records. The architecture of the building serves as an example of the traditional Spanish design. The original courtyard served not only as protection for the residents but also protected the owners livestock during the harsh winter months.

The architecture of the structure is in keeping with the continuous portals which extend along San Francisco Street. Although the structure has been remodeled, the original character has been maintained

Property Name: Larragoite Residence

Location: 803 Agua Fria Street

Present Use: Private Residence

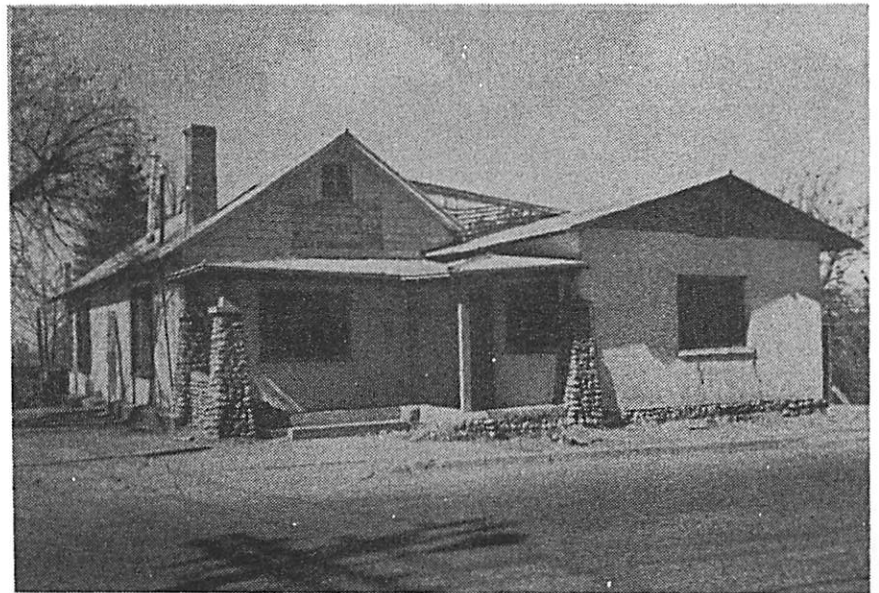
Physical Condition: Good

Ownership: Patricio Larragoite - 803 Agua Fria
Santa Fe, New Mexico 87501

Thematic Classification: Architecture

Style: Santa Fe Venacular

Year of Construction: 1860



Physical Appearance: This structure is an example of a style known as Santa Fe Vernacular, which is a mixture of styles made possible by building materials that came in with the railroad. The basic construction is adobe with a gabled roof covered with terne plate metal. The side gables are covered with wood shingles. There is a porch along the side of the structure supported by river rock columns. The double hung windows are not original.

The original part of the house consisted of three front rooms. This part is catalogued in a warranty deed dated August 2, 1866. It is described as a house consisting of thirty-six beams. Presently, this part of the house still exists. It is therefore believed that the house was constructed in 1860. It was first assessed by the County in 1900.

Historical Importance: This property, located on the historic Camino Real, has remained in the Larrogoite Family since its construction in 1860. It has not only served as the private residence for this family, but has been used as a family business. Among its uses include a grocery store, a meat market, and a liquor store. It has provided the community with a meaningful service by meeting the needs of residents, and also enriching the relationships among those who met here while conducting their daily business.

The original owner of the property, Armando Larragoite, was not only interested in community affairs, but also was very active in local politics. Originally from Velarde, New Mexico, and the son of an attorney from Spain, Armando made his permanent home in Santa Fe where he served as Police Chief, member of the City Council, and later was President of the School Board. His biggest contribution to Santa Fe was during his tenure as President of the School Board. In this capacity, Armando strove for equality and fairness in education. He represented the Spanish-speaking people of Santa Fe and encouraged their participation in education.

Armando Larragoite showed a deep interest in the events of Santa Fe, and indeed, played an important part in its development. He is honored with an elementary school and a public park named after him. Preservation of his home should also honor him.

Property Name: Mama Lola's Restaurant

Location: 548 Agua Fria

Present Use: Italian Restaurant

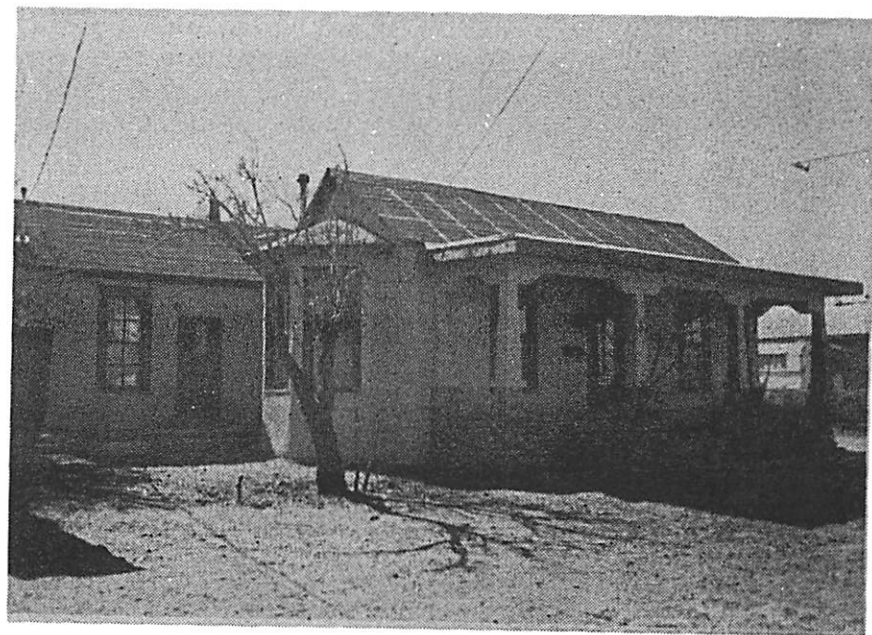
Physical Condition: Excellent

Ownership: Siva Buar - c/o 548 Agua Fria
Santa Fe, N.M. 87501

Thematic Classification: Architecture

Style: Santa Fe Vernacular/Bungalow

Year of Construction: 1880



Physical Appearance: This structure appears on the 1912 King's Map and is first recorded on County Assessors records in 1915. Therefore, it is believed construction was at the turn of the century. The architecture is very unique and characterizes the Bungalow style. Historically, structures along Agua Fria Street were usually constructed of adobe during this particular time period. This is one of the first frame constructed structures along Agua Fria Street.

The architectural features include the low peak gable roof with asphalt roll, covering the original terne plate material. The roof extends over the front porch which is supported by masonry columns, with corbels, resting on pedimented river rock bases. Openings include rectangular double hung wooden windows and a unique front door with twin arched windows. A polygonal bay window extends from the eastern portion of the structure. The exterior is a blue stucco finish with woodwork painted a darker shade of blue. The structure, which was originally a residence, has been recently converted to a restaurant.

Historical Importance: According to the 1912 King's Map, the structure and property was owned by Charles William Dudrow, a prominent and successful Santa Fe businessman. According to An Illustrated History of New Mexico, Dudrow was born in Frederick County, Maryland on November 5, 1849. Dudrow came to New Mexico on the first passenger train into Santa Fe in 1880 where he initially opened a freight transfer business. In 1888, Dudrow added a lumber and builder supply business on five acres of land on what is now Dudrow Street. Dudrow served as Commissioner of Santa Fe for eight years. He also served as Chairman of the Board of the Commission. Charles Dudrow died in March of 1911.

Property Name: New Mexico Warehouse

Location: 500 Montezuma

Present Use: Industrial

Physical Condition: Excellent

Ownership: Sanbusco - 500 Montezuma
Santa Fe, N.M. 87501

Thematic Classification: Commerce and Trade

Style: Railroad Commercial

Year of Construction: 1880



Physical Appearance: This structure was built in conjunction with the coming of the railroad. The railroad brought in not only people, but also supplies to Santa Fe. One product in demand was milled lumber used in building construction. The structure served as a warehouse where the lumber was unloaded and then distributed.

The structure appears on the Stoner Map of 1882 and was constructed in 1800. It is built in the Railroad Commercial style. It is a one and a half story brick structure with a pitched roof and false front. The rectangular double hung windows are set in segmental arches. The building adjoins the railroad trucks and is connected to a series of other buildings. It also appears on the King's Map of 1912.

Historical Importance: The owner of this property was C. W. Dudrow. Mr. Dudrow was a well known lumber dealer in the City of Santa Fe. Dudrow originally came from Frederick, Maryland. He was elected twice as Sheriff of Santa Fe County but declined the position both times. However he served as County Commissioner for two terms and was also a member of the City Council.

Property Name: Perry House

Location: 518 Agua Fria

Present Use: Private Residence

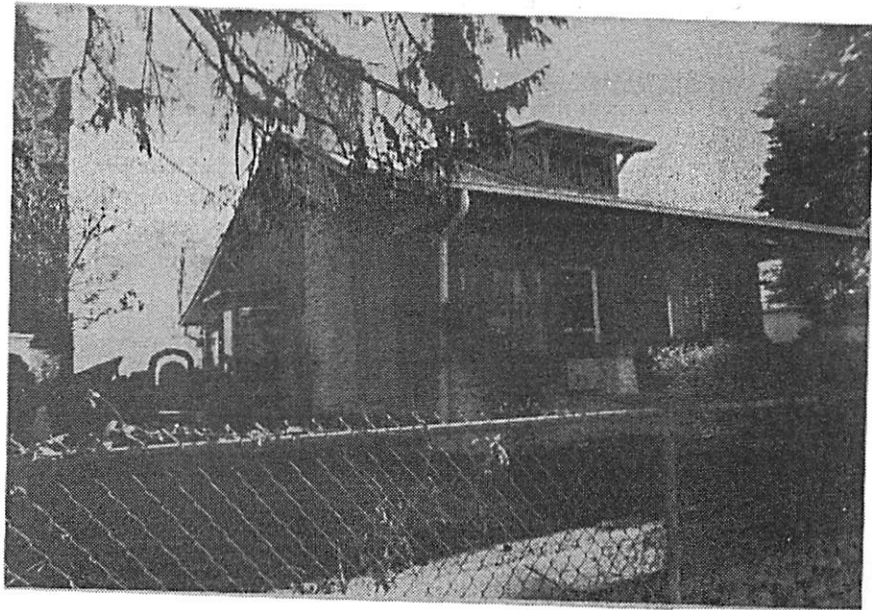
Physical Condition: Excellent

Ownership: Tom Perry - 518 Agua Fria
Santa Fe, N.M. 87501

Thematic Classification: Architecture

Style: Craftsman

Year of Construction: 1880



Physical Appearance: This structure, constructed between 1880 and 1900 is Craftsman Style, very unique to the area. The characteristics of this home are the medium pitch gable roof with exposed roof rafters and brackets, front porch with extended porch beams, and shed dormer window over the front porch. The original porch columns set on stone pedestals, have been replaced by wrought iron supports. Other than this minor alteration, the house is in original condition. The bay window on the east wall is original. Stone facing and large picture windows form the facade.

Historical Importance: This structure represents a style made possible by use of new building materials and architectural designs which came into New Mexico by railroad. The interesting concept is that local building materials, such as adobe and stone, were combined with other building materials and styles. Milled lumber used on this structure made possible the pitch roof, polygonal bay window, and the large picture windows. The style is more refined and precise than the native Pueblo Style.

This house was also built at the turn of the century according to County Assessors records, and is on the 1912 King's Map. It is built on historic Agua Fria Street, which was once the original Camino Real.

The structure is important as it is the only true Craftsman encountered in the survey area. The style is similar to the Bungalow style but has minor differences which set it apart. There are very few examples of Craftsman architecture, if any, in Santa Fe and therefore should be protected.

Property Name: Supreme Body Shop

Location: 326 Guadalupe Street

Present Use: Commercial

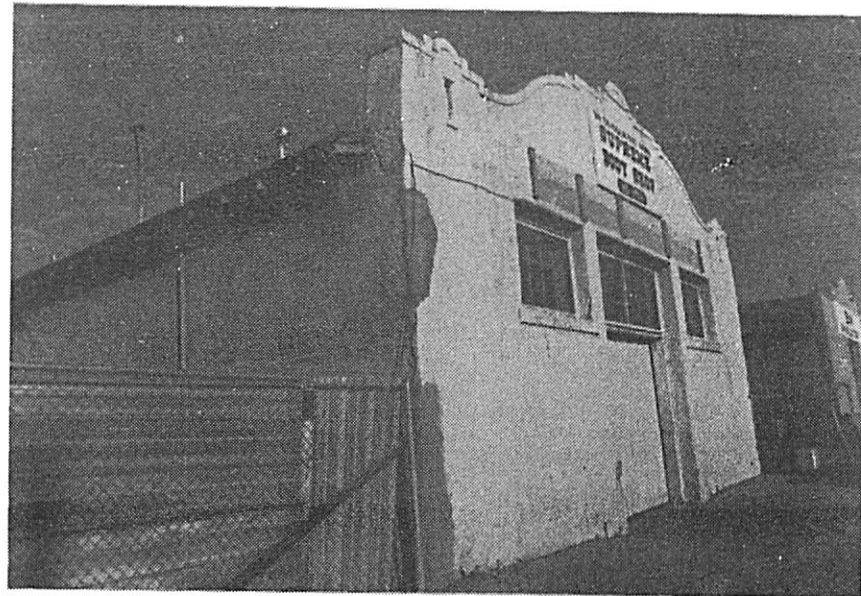
Physical Condition: Good

Ownership: BYB Enterprises c/o 326
Guadalupe Santa Fe, N.M. 87501

Thematic Classification: Architecture

Style: California Mission (remodeled c. 1920)

Year of Construction: 1880



Physical Appearance: According to County assessment records, the building was constructed in 1867. The structure appears on the Stoner Map of 1882, the Hartman Map of 1886, and the 1912 King's Map.

The rectangular plan structure is faced with a California Mission style facade, the only architecturally significant element of the building. Constructed of red brick and originally stuccoed pink, the curvilinear parapet wall hides the metal pitched roof. Small rectangular niches adorn either ends of the top of the facade, below a molding crowning the top of the facade. Three large fixed rectangular windows and wooden garage door complete the composition of the front elevation.

Historical Importance: The main significance of this building is the architecture which represents one of the few examples of California Mission style in Santa Fe. It is the only structure of this style near the Atchison, Topeka, and Santa Fe Train depot, which adopted the California Mission style for all its depots in the west.

The building was once owned and occupied by the H. B. Cartwright & Brother Company, prominent citizens of Santa Fe in the late 19th and early 20th centuries. The family was well known for its grocery and hardware stores, continuing into the present day. H. B. Cartwright was organizer and president of the Santa Fe Telephone Company, president of the New Mexico Telephone Company, and County Treasurer of Santa Fe County.

PHOTOGRAPHIC ILLUSTRATIONS

- Photo Collections, Museum of New Mexico - Page 2
- Photo Collections, Museum of New Mexico - Page 3
- Photo Collections, Museum of New Mexico - Page 4 Left
- Photo Collections, Museum of New Mexico - Page 4 Right
- Photo Collections, Museum of New Mexico - Page 5
- Photo Collections, Museum of New Mexico - Page 6 Left
- Photo Collections, Museum of New Mexico - Page 6 Right
- Photo Collections, Museum of New Mexico - Page 7 Left
- Photo Collections, Museum of New Mexico - Page 7 Right