

Date: October 2, 2025
To: Buckman Direct Diversion Board
From: Matthew Sandoval, BDD Operations Superintendent
Subject: Update on BDD Operations for the Month of September 2025

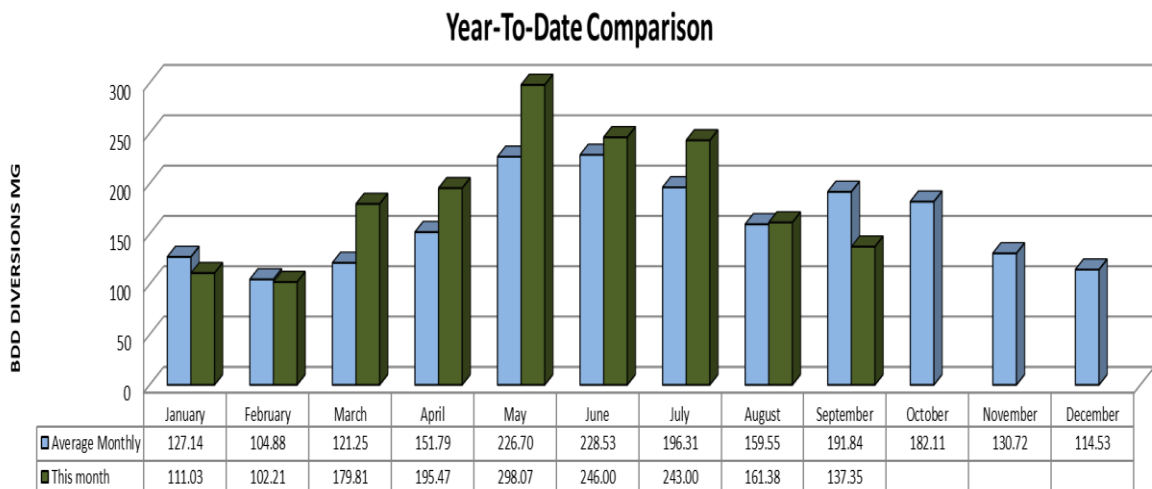
ITEM:

1. This memorandum is to update the Buckman Direct Diversion Board (BDDDB) on BDD operations during the month of September 2025. The BDD diversions and deliveries have averaged, in Million Gallons Per Day (MGD), as follows:
 - a. Raw water diversions: 4.66 MGD
 - b. Drinking water deliveries through Booster Station 4A/5A: 4.19 MGD
 - c. Raw water delivery to Las Campanas at BS2A: 0.40 MGD

2. Water supply to the City and County from all sources.

	Sep-2025	Sep-2024
BDD	37.3%	55.0%
Canyon Rd WTP	30.0%	17.3%
City Wells	11.1%	14.3%
Buckman Wells	21.6%	13.4%

3. The BDD year-to-date diversions are depicted below:



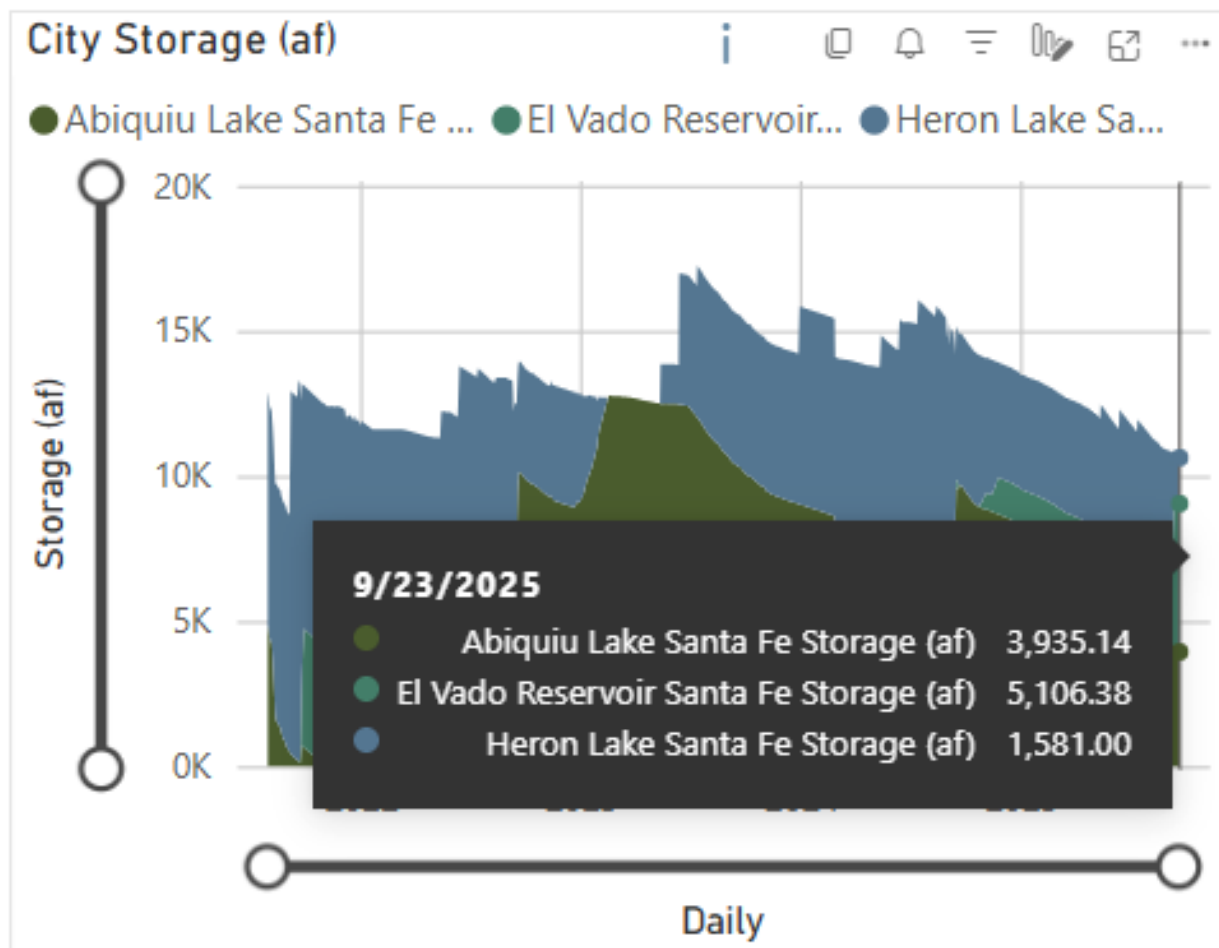


Regional Water Overview

Daily metered regional water demand for the month averaged approximately: 10.1 MGD

Rio Grande flows averaged approximately: 319 CFS (cubic feet per second)

City/County/Las Campanas Storage- as updated by partners. As of September 23, 2025 City of SF Abiquiu SJC storage is at about 3935.14 AF.



Regional Water Supply

CRWTP reservoir storage: Nichols: 4.79% McClure: 64.80% Watershed Inflow: 3.24 MGD

- Santa Fe SNOTEL
 - Cumulative snow Water/Equiv. Inches 0
 - Cumulative Snow in Depth in Inches 0



Current Rio Grande Watershed Snowpack Storage Data:

The Current Upper Rio Grande Basin Index is 0% of the historic median value for Snow Water Equivalent (SWE) given that snowpack has completely ablated and 80% of the historic median value for precipitation meaning that rainfall in this basin has improved but is still below historical averages. BDD will need to be strategic with how it diverts and stores water as flows in the Rio Grande are anticipated to be low.

Source: <https://wcc.sc.egov.usda.gov/>

Current El Niño Southern Oscillation (ENSO) Status Summary

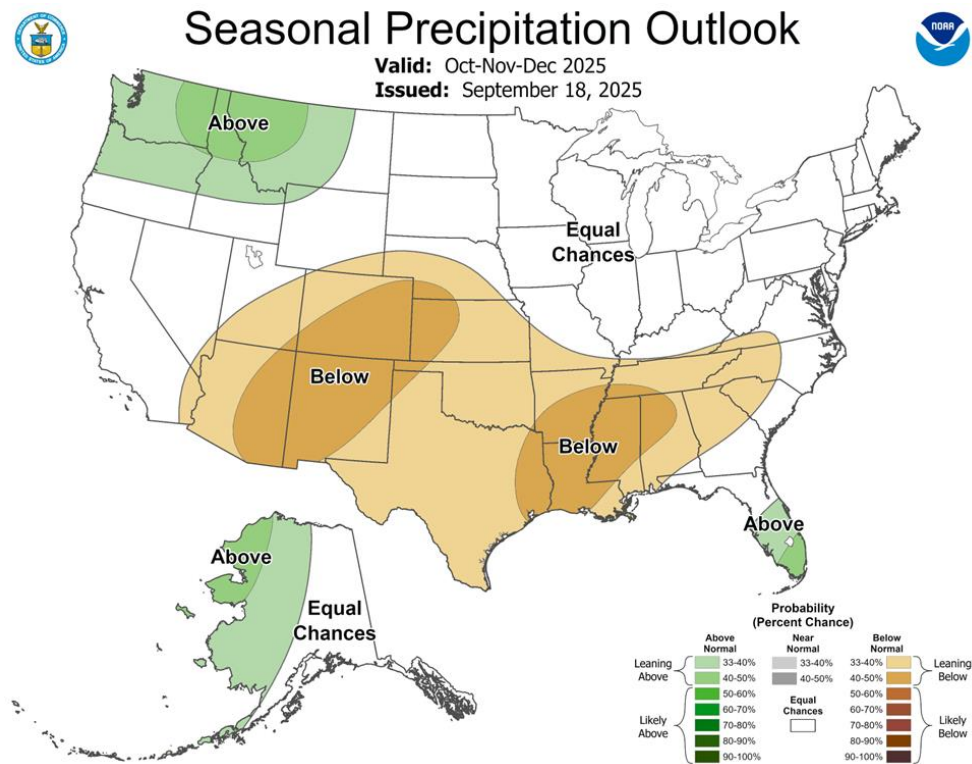
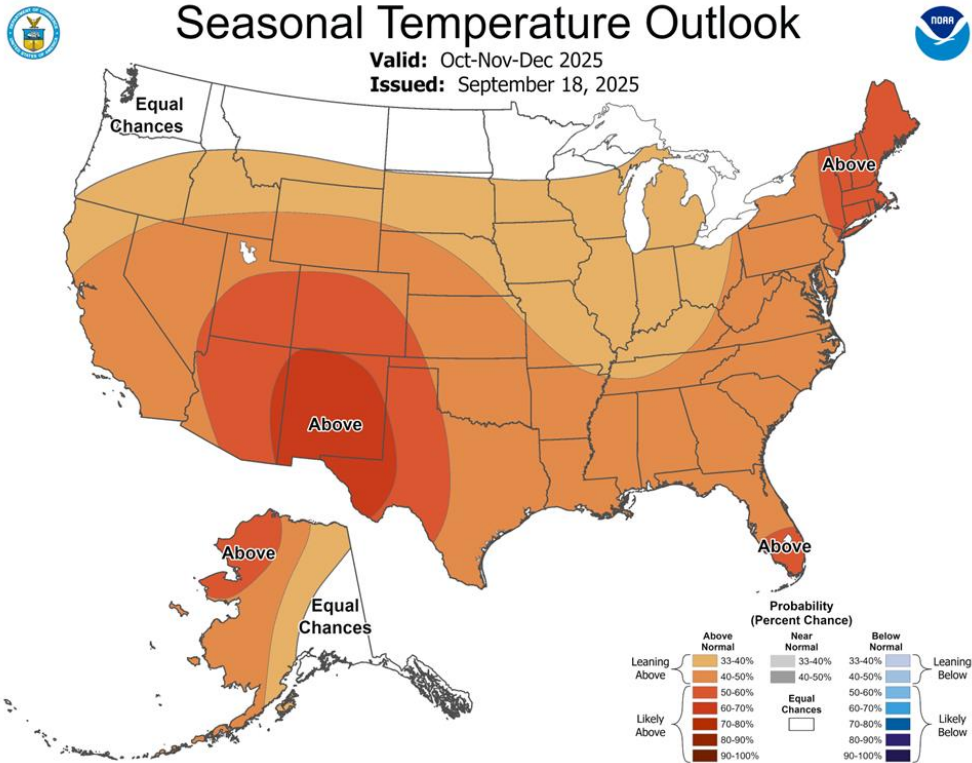
As of September 11, 2025, the latest update from NOAA's Climate Prediction Center indicates that the current El Niño-Southern Oscillation (ENSO) status is ENSO-neutral, meaning sea surface temperatures in the central and eastern tropical Pacific Ocean are neither warm enough for El Niño nor cool enough for La Niña. A transition to La Niña is likely within the next couple of months. NOAA's seasonal outlook suggests a 71% chance of La Niña developing between October and December 2025, a 71% chance from November 2025 to January 2026, and a 54% chance from December 2025 to February 2026. The chance of remaining ENSO-neutral during these periods is 26%, 24%, and 41%, respectively, while the chance of El Niño is low at 3% to 5%. These probabilities reflect multiple model forecasts with moderate confidence in La Niña's near-term development due to cooling trends in the tropical Pacific.

Source: cpc.ncep.noaa.gov

Seasonal Precipitation and Temperature Outlooks:

The current precipitation outlook is below normal for the region while the current temperature outlook is above normal for the region. Maps of this forecast are pictured below.

Source: https://www.cpc.ncep.noaa.gov/products/predictions/long_range/seasonal.php?lead=1





Buckman Direct Diversion Monthly Native and SJC Diversions (ac-ft)

	Total Diverted	Total Native Diverted	County Native Rio Grande Diversions				TCLC Native Rio Grande Diversion			San Juan-Chama Diversions			
			Total County Native Diverted	County Native SP-4842	County Native SP-4842-A	County Native RG-20516 et al.-C into SP-4842	County Native RG-20516 et al.-A & -B into SP-4842-A	Total TCLC Native Diverted	TCLC Native SP-4842-A	TCLC Native RG-20516 et al.-A & -B into SP-4842-A	Total SJC Diverted	City SJC SP-2847-E Diverted	County SJC SP-2847-E Diverted
2025 Jan	326,141	123,689	123,689	123,689	0.000	0.000	0.000	0.000	0.000	202,453	202,453	0.000	0.000
Feb	313,427	28,205	28,205	28,205	0.000	0.000	0.000	0.000	0.000	285,223	285,223	0.000	0.000
Mar	563,860	257,038	257,038	257,038	0.000	0.000	0.000	0.000	0.000	306,823	306,823	0.000	0.000
Apr	677,035	471,649	471,649	471,649	0.000	0.000	0.000	0.000	0.000	205,388	205,388	0.000	0.000
May	918,542	292,560	292,560	292,560	0.000	0.000	0.000	0.000	0.000	625,983	625,983	0.000	0.000
Jun	754,206	62,214	62,214	62,214	0.000	0.000	0.000	0.000	0.000	691,993	691,993	0.000	0.000
Jul	748,447	35,193	35,193	35,193	0.000	0.000	0.000	0.000	0.000	713,256	713,256	0.000	0.000
Aug	446,168	0.000	0.000	0.000	0.000	0.000	0.000	0.000	0.000	446,169	446,169	0.000	0.000
Total	4,747,825	1,270,548	1,270,548	1,270,548	0.000	0.000	0.000	0.000	0.000	3,477,288	3,477,288	0.000	0.000
Max Allowable		2,373,868	2,157,734	1,292,030	0.000	372,384	493,320	146,330	69,804	6,774,500	6,407,000	367,500	0.000
Remaining		1,103,321	887,187	21,483	372,384	493,320	146,330	69,804	3,297,212	2,929,712	367,500	0.000	

Projected Diversions (ac-ft)

	Total Diverted	Total Native Diverted	Total County Native Diverted	County Native SP-4842	County Native SP-4842-A	County Native RG-20516 et al.-C into SP-4842	County Native RG-20516 et al.-A & -B into SP-4842-A	Total TCLC Native Diverted	TCLC Native SP-4842-A	TCLC Native RG-20516 et al.-A & -B into SP-4842-A	Total SJC Diverted	City SJC SP-2847-E Diverted	County SJC SP-2847-E Diverted	TCLC SJC SP-2847-N-A Diverted
2025 Sep	700	0	0	0	0	0	0	0	0	0	700	700	0	0
Oct	700	0	0	0	0	0	0	0	0	0	700	700	0	0
Nov	400	300	300	21	0	279	0	0	0	0	100	100	0	0
Dec	600	500	500	0	0	94	406	0	0	0	100	100	0	0
Total Projected	2,400	800	800	21	0	372	406	0	0	0	1,600	1,600	0	0

SJC in Storage as of Monday, September 1, 2025 (ac-ft)

City SJC in Storage	10,901
County SJC in Storage	986
TCLC SJC in Storage	548



Buckman Direct Diversion Monthly SJC and Native Diversions								
Dec-24								
In Acre-Feet								
Month	Total SJC + Native Rights	SP-4842 RG Native COUNTY	SD-04842-A RG Native VIA SFC LAS CAMPANAS	SJC Call Total	SP-2847-E SJC Call CITY	SP-2847-N-A SJC Call LAS CAMPANAS	SP-2847-E SJC Undiverted CITY	All Partners Conveyance Losses
JAN	283.691	91.173	0.000	192.518	192.518	0.000	0.000	1.986
FEB	293.064	112.967	0.000	180.097	180.097	0.000	0.000	1.858
MAR	217.014	95.914	0.000	121.100	121.100	0.000	0.000	1.475
APR	396.998	255.245	67.230	74.523	74.523	0.000	0.000	1.004
MAY	750.899	395.038	123.438	232.423	232.423	0.000	0.000	1.347
JUN	642.136	371.118	7.114	263.905	263.905	0.000	0.000	1.743
JUL	652.169	320.362	74.513	257.295	257.295	0.000	0.000	1.166
AUG	647.277	0.000	0.000	659.885	659.885	0.000	12.608	3.210
SEP	666.797	0.000	0.000	776.587	776.587	0.000	109.791	3.604
OCT	612.559	0.000	0.000	631.170	631.170	0.000	18.612	5.811
NOV	385.574	154.074	0.000	231.501	231.501	0.000	0.000	1.755
DEC	353.083	214.183	0.000	138.900	138.900	0.000	0.000	1.053
TOTAL	5,901.261	2,010.073	272.294	3,759.904	3,759.904	0.000	141.010	26.014
In Million Gallons								
Month	Native COUNTY	SFC Native Las Campanas	SJC TOTAL	SJC CITY	SJC Las Campanas	SJC Undiverted CITY	All Partners Diversions	
JAN	29.698	0.000	61.974	61.974	0.000	0.000	91.672	
FEB	36.797	0.000	57.976	57.976	0.000	0.000	94.773	
MAR	31.242	0.000	38.910	38.910	0.000	0.000	70.153	
APR	83.142	21.899	23.913	23.913	0.000	0.000	128.954	
MAY	128.677	40.208	74.921	74.921	0.000	0.000	243.805	
JUN	120.885	2.317	84.961	84.961	0.000	0.000	208.164	
JUL	104.352	24.271	82.879	82.879	0.000	0.000	211.503	
AUG	0.000	0.000	208.462	208.462	0.000	4.107	208.462	
SEP	0.000	0.000	214.522	214.522	0.000	35.762	214.522	
OCT	0.000	0.000	197.347	197.347	0.000	6.062	197.347	
NOV	50.187	0.000	74.729	74.729	0.000	0.000	124.916	
DEC	69.766	0.000	44.837	44.837	0.000	0.000	114.604	
TOTAL	654.747	88.695	1,165.432	1,165.432	0.000	45.932	1,908.874	