

A photograph of water flowing through a metal grate into a body of water. The scene is captured at sunset or sunrise, with a warm, golden light reflecting off the water's surface. The water is in motion, creating ripples and splashes as it falls from the grate. The overall mood is serene and natural.

City of Santa Fe MS4 Program

Water Conservation Committee
September 2025

Zoë Isaacson, River & Watershed Program Manager
Claire Jordy, River & Watershed Project Manager

Outline

- Regulatory Background
- MS4 Overview
- Our Stormwater Program



A photograph of a grand, classical building with a portico supported by tall columns. The building has a light-colored, textured facade and arched windows. Large trees with green leaves are in the foreground, partially obscuring the building. The sky is bright and overcast.

Regulatory Background

Federal/State/Local Stormwater Regulations

Federal: US EPA

Clean Water Act (1972)



National Pollutant Discharge
Elimination System (NPDES)



Point source



Non-point source



Individual
permits



General
permits

Federal/State/Local Stormwater Regulations

Federal: US EPA

Clean Water Act (1980)



National Pollutant Discharge
Elimination System (NPDES)



Point source



Non-point source



General
permits



Individual
permits

Coming Soon

State: NMED

*Surface Water Quality Bureau
(SWQB)*



Point source



Water quality
standards:
designated
uses, impaired
waters, TMDLs



Watershed
protection:
WRAPs

Federal/State/Local Stormwater Regulations

Federal: US EPA

Clean Water Act (1980)



National Pollutant Discharge Elimination System (NPDES)



Point source

Non-point source



Individual permits

General permits

State: NMED

Surface Water Quality Bureau (SWQB)



Point source

Water quality standards:
designated uses, impaired waters, TMDLs

Watershed protection:
WRAPs

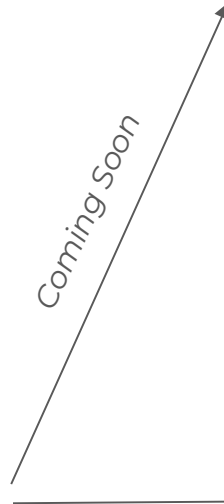


Local: City of Santa Fe



MS4 Permit and SWMP

Coming Soon





MS4 Overview

MS4 Background

MUNICIPAL SEPARATE STORM SEWER SYSTEM

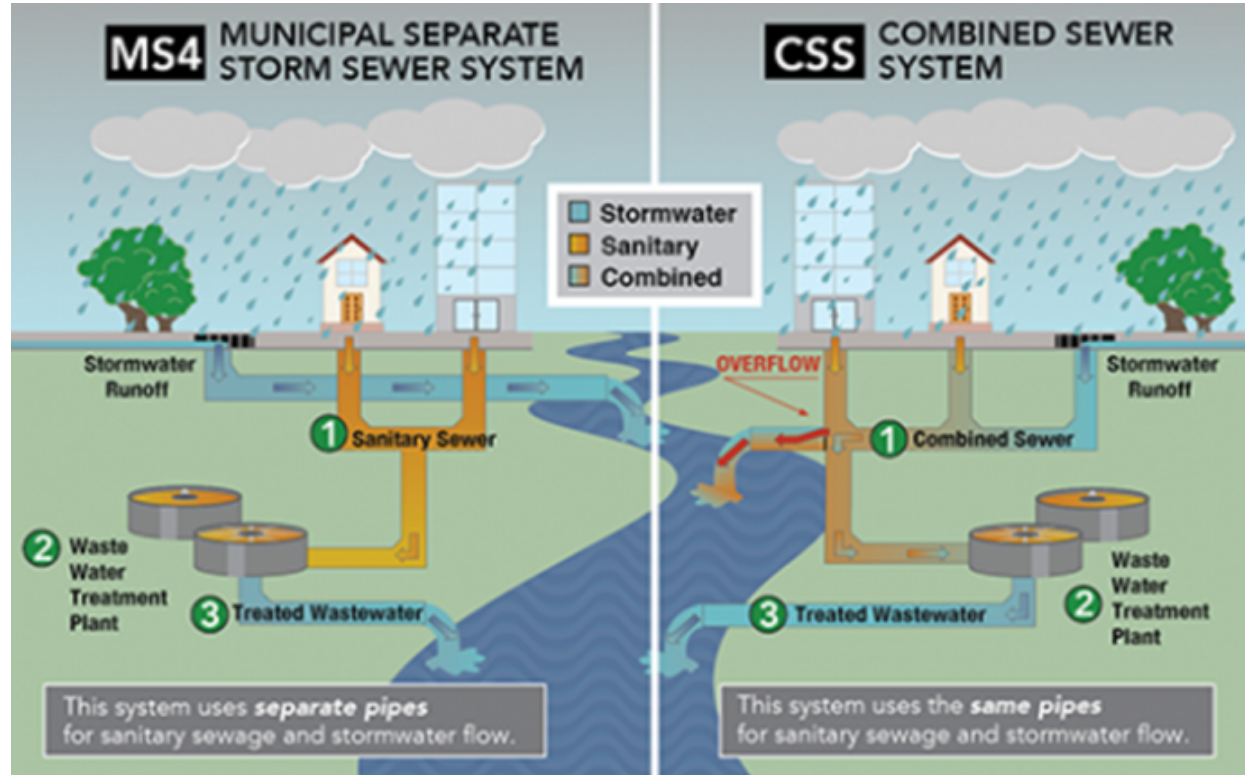


Photo Source: Clean Water Education Partnership

MS4 Permits Overview

Phase I: large urbanized areas (>100,000 population), began in 1990

Phase II: small urbanized areas (>50,000 population), began in 1999

- Permits issued by the EPA, administered by EPA/State
- Each permit is distinct but all include MCMs
- Annual reports to show progress
- Permits on a 5-year cycle
- Population re-evaluated every 10 years
- Used to be individual municipalities, now starting watershed-based permits

MS4 Permits in New Mexico

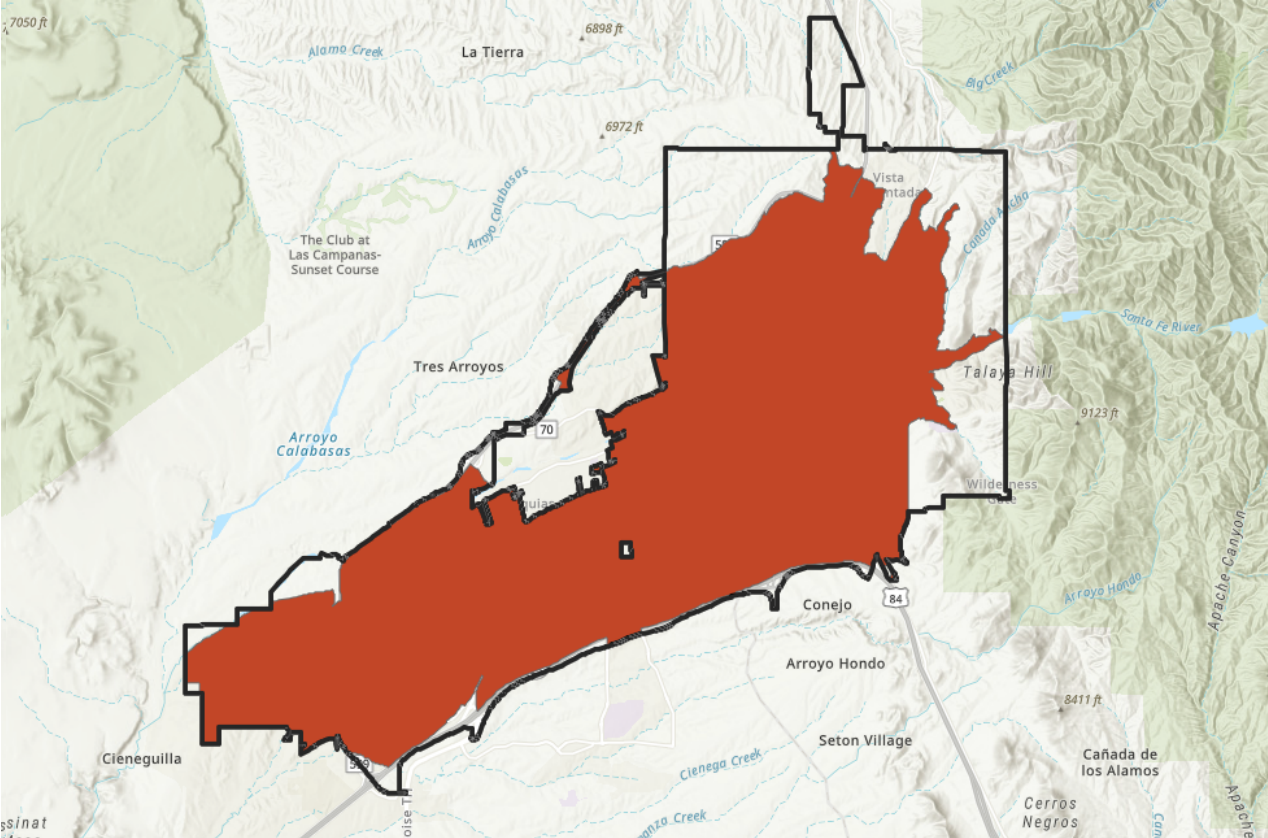
NMR04A000 NPDES Stormwater General Permit for MS4s in the Middle Rio Grande Watershed in New Mexico

- Albuquerque Urbanized Areas

NMR040000 NPDES Stormwater General Permit for Small MS4s in New Mexico

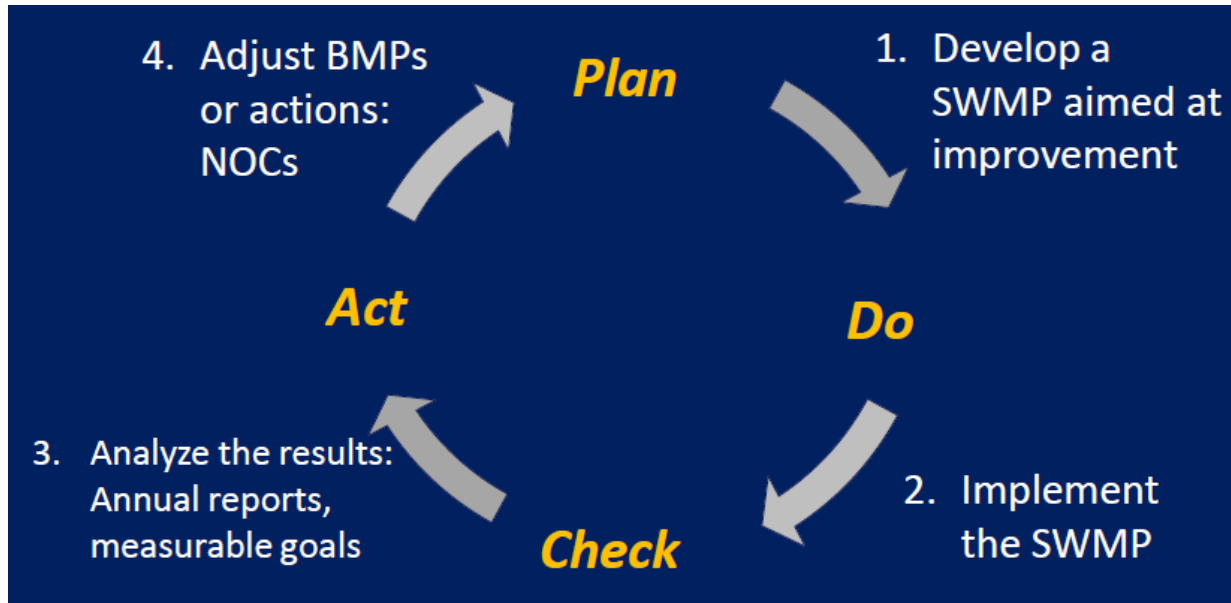
- Farmington, Santa Fe, Los Lunas, Las Cruces and El Paso Urbanized Areas
- Effective date: July 1, 2007
- Expiration date: June 30, 2012 (administratively continued) - draft permit 2015

MS4 Permit



MS4 Permit - Santa Fe

Stormwater Management Program (SWMP)



Minimum Control Measures (MCMs)

MCM 1: Public Education and Outreach on Stormwater Impacts

MCM 2: Public Involvement/Participation

MCM 3: Illicit Discharge Detection and Elimination

MCM 4: Construction Site Stormwater Runoff Control

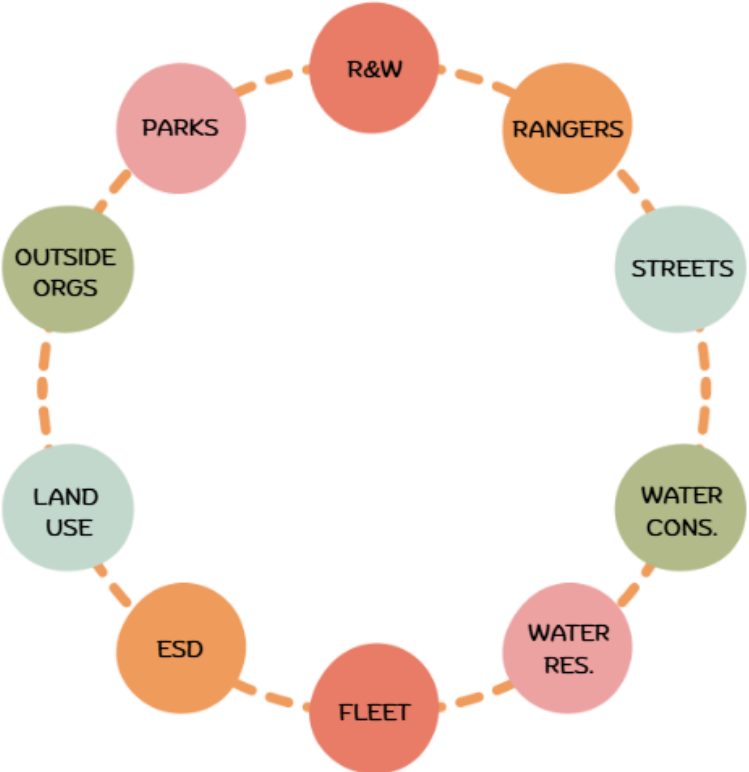
MCM 5: Post-Construction Stormwater Management in New Development and Redevelopment

MCM 6: Pollution Prevention/Good Housekeeping for Municipal Operations

A photograph showing a stormwater management system. A narrow, shallow channel of water flows through a stone-lined ditch. The ditch is bordered by low, rustic stone walls on both sides. The banks of the ditch are covered in lush green grass. In the background, there are several large, mature trees and a light-colored building with a red-tiled roof. The scene is set in a park-like area with a paved path and a parking lot visible in the distance.

Our Stormwater Program

Municipal Stormwater Management



River & Watershed Section

- 1 Improve Surface water quality (MS4)
- 2 Optimize stormwater management and infrastructure
- 3 Restore ecological function and vitality of waterways
- 4 Enhance understanding of the urban hydrologic system

We deploy innovative strategies to effectively manage stormwater. By re-integrating stormwater with the surrounding landscape, we build greater infrastructure capacity, improve water quality, and increase infiltration on public lands.

2024-2025 MS4 Annual Report

Achievements Overview and Highlighted Projects:

- Fully staffed section
- Secured additional funding beyond utility charge
 - FEMA Hazard Mitigation and Public Assistance Grants (OEM)
 - Que Linda
 - CWSRF
- City Policy Initiatives
 - Midtown Stormwater Master Plan
 - City Streets Design Guide
 - West Alameda Pilot Project and Rebate Program
- Infrastructure Projects
 - Santa Fe River Resiliency and Channel Stabilization Project - Design 100% complete
 - Arroyo Chamisos North Forks Site 1 & 2 - Construction 90% complete
 - Arroyo Chamisos North Fork Site 3- 100% Design

2024-2025 MS4 Annual Report

MCM 1: Public Education and Outreach

- Overhaul of R&W website
- Green waste and household hazardous waste campaign
- New pet waste brochure
- Community events: Watershed Fest, Arbor Day, Love Your Watershed Day
- 6th Annual River Talk Series
- Storm drain inlet marker replacement
- Public signage
- Santa Fe Watershed Association programs



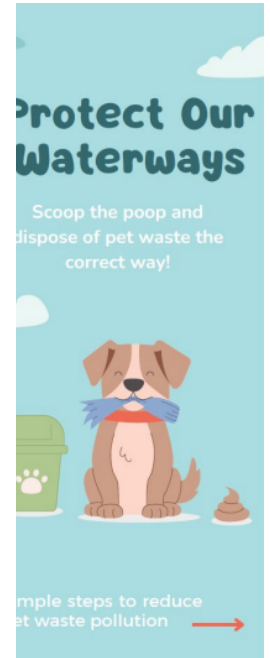
RIVER TALKS 2024

A free series of presentations and tours for community members to learn more about our river, watershed, and other related topics.

2024 SCHEDULE

- September 4 | Southside Library | 6PM
The Use of Fungi in the Bioremediation of Stormwater
- September 7 | San Ysidro Crossing Trailhead | 930AM
Santa Fe River Trail Expansion
- September 18 | Buckman Direct Diversion (BDD) | 930AM
From the Rio to your Tap
- September 21 | La Farge Library | 930AM
Elm Thinning Workshop and Cleanup Near La Farge Library
- October 2 | Southside Library | 6PM
Plant Communities of the Santa Fe River Watershed
- October 5 | Randall Davey Audubon Center | 9AM
Upper Santa Fe Watershed Transformation
- October 9 | Main Library | 6PM
Embrace the Rain for Climate Change

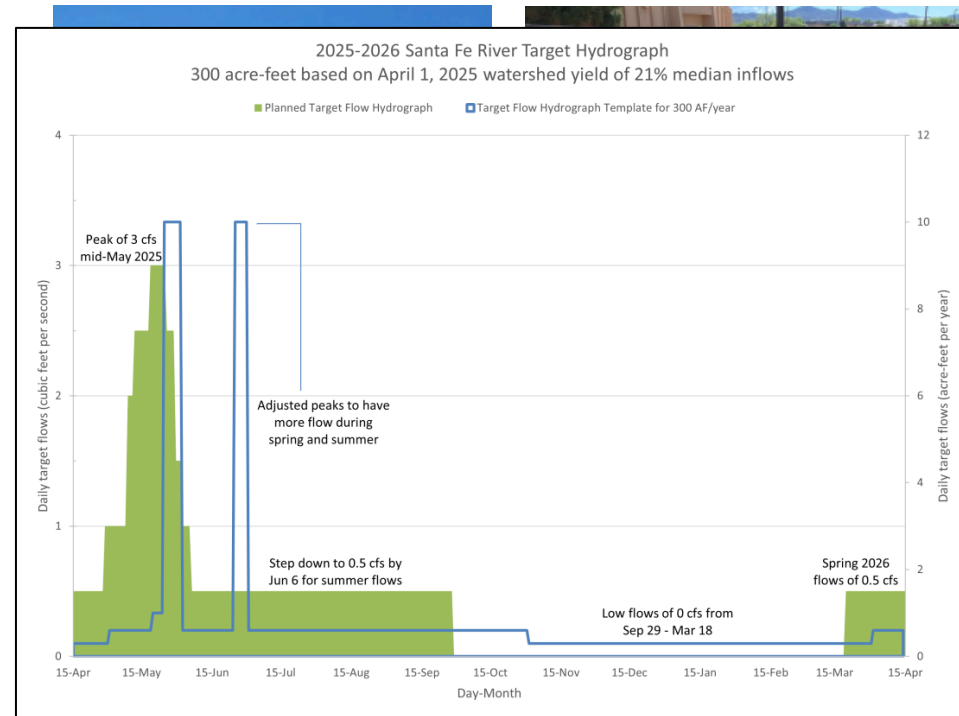
Sponsored by the City of Santa Fe & the Santa Fe River Commission.
To view the full 2024 schedule and to register visit [Lead.me/river talks](https://lead.merivertalks.com) or scan the QR code.



2024-2025 MS4 Annual Report

MCM 2: Public Involvement

- Santa Fe Watershed Association
 - Workshops
 - Adopt-a-Watershed
- River Source - Monarch Butterfly Station
- River Commission
- Rain Watchers
- FullCircle
- Trash Pandas
- Online Reporting Tool



2024-2025 MS4 Annual Report

MCM 3: Illicit Discharge

- Business inspections
- Education
- System mapping

MCM 4: Construction Sites

- Inspections
- Education



2024-2025 MS4 Annual Report

MCM 5: Post-Construction Runoff Control

- Large-scale LID/GSI
- Workshops on maintenance
- Street Design Guide
- Erosion control structures
- Land Use Development Code Update



2024-2025 MS4 Annual Report

MCM 6: Pollution Prevention / Good Housekeeping

- Vegetation management
 - Infrastructure projects
 - Education/training
 - System maintenance
- 17 stretches cleared of debris/invasives (22 acres)
 - \$360,000 spent on vegetation management
 - 23 outfalls + 2,452 inlets + 15 culverts cleaned = 1,750 tons of trash/debris removed
 - 1,722 tons of sediment swept from roadways
 - 849 encampments cleaned = 305 tons of trash removed
 - 869 preventative work orders on City vehicles



Upcoming Projects

1

Water quality

- Stream monitoring
- System mapping
- Education

2

Quality infrastructure

- Waterway prioritization
- Arroyo Chamisos / Arroyo de los Pinos
- Cerro Gordo culvert

3

Ecological restoration

- Living River flows
- Invasive Species Studies
- River restoration

4

Re-connecting stormwater to the landscape

- Ashbaugh Park Infiltration Gallery
- Marc Brandt Park Bio Swale Project
- Residential LID/GSI

River & Watershed Section

Zoe Isaacson, Program Manager

zisaacson@santafenm.gov

Claire Jordy, Project Manager

csjordy@santafenm.gov

<https://santafenm.gov/public-works/parks-and-open-space/river-and-watershed>