

Date: September 4, 2025
To: Buckman Direct Diversion Board
From: Matthew Sandoval, BDD Operations Superintendent
Subject: Update on BDD Operations for the Month of August 2025

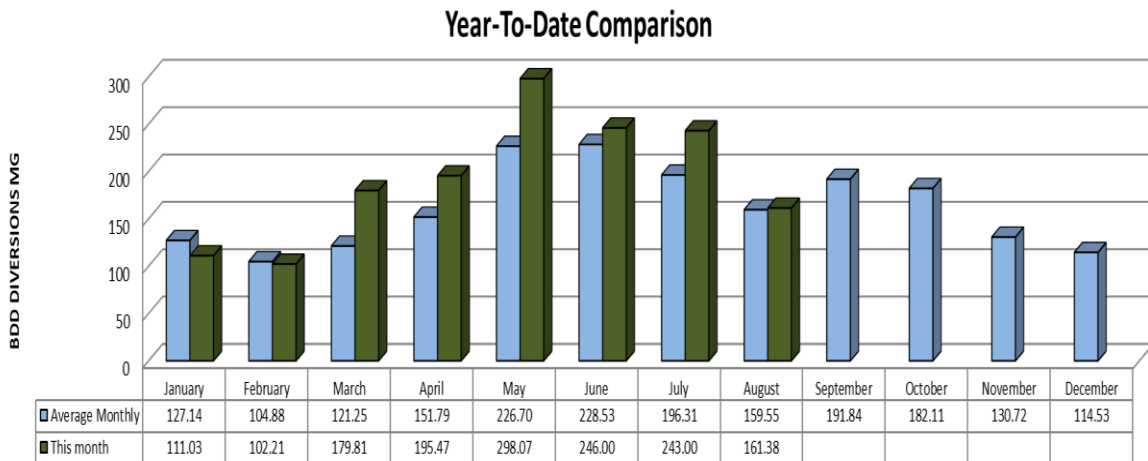
ITEM:

1. This memorandum is to update the Buckman Direct Diversion Board (BDDDB) on BDD operations during the month of August 2025. The BDD diversions and deliveries have averaged, in Million Gallons Per Day (MGD), as follows:
 - a. Raw water diversions: 5.26 MGD
 - b. Drinking water deliveries through Booster Station 4A/5A: 4.57 MGD
 - c. Raw water delivery to Las Campanas at BS2A: 0.86 MGD

2. Water supply to the City and County from all sources.

	Aug-2025	Aug-2024
BDD	35.3%	42.7%
Canyon Rd WTP	18.1%	16.0%
City Wells	10.2%	6.8%
Buckman Wells	36.4%	34.5%

3. The BDD year-to-date diversions are depicted below:

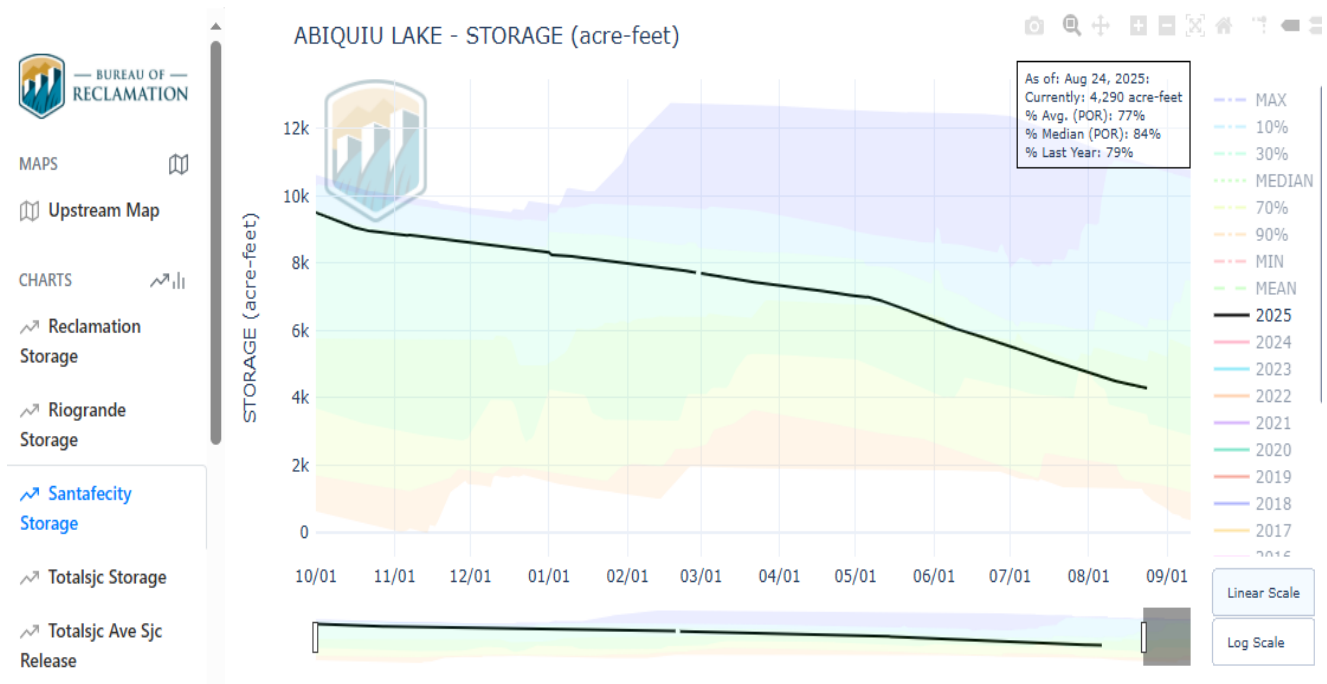


Regional Water Overview

Daily metered regional water demand for each month averaged approximately: 12.6 MGD

Rio Grande flows averaged approximately: 217 CFS (cubic feet per second)

City/County/Las Campanas Storage- as updated by partners. As of July 29, 2025 City of SF Abiquiu SJC storage is at about 4,290 AF.



Regional Water Supply

CRWTP reservoir storage: Nichols: 0% McClure: 52.10% Watershed Inflow: 4.83 MGD

- Santa Fe SNOTEL
 - Cumulative snow Water/Equiv. Inches 0
 - Cumulative Snow in Depth in Inches 0



Current Rio Grande Watershed Snowpack Storage Data:

The Current Upper Rio Grande Basin Index is 0% of the historic median value for Snow Water Equivalent (SWE) given that snowpack has completely ablated and 73% of the historic median value for precipitation meaning that storage in this basin is below historical averages. BDD will need to be strategic with how it diverts and stores water as flows in the Rio Grande are anticipated to be low.

Source: <https://wcc.sc.egov.usda.gov/>

Current El Niño Southern Oscillation (ENSO) Status Summary

The El Niño-Southern Oscillation (ENSO) is a recurring climate pattern involving fluctuations in sea surface temperatures (SSTs) and atmospheric conditions in the tropical Pacific Ocean. It cycles through three main phases: El Niño (warmer-than-average SSTs in the central and eastern Pacific), La Niña (cooler-than-average SSTs), and ENSO-neutral (SSTs near average). The primary metric for classification is the Niño 3.4 index, which measures SST anomalies in the east-central equatorial Pacific (5°S–5°N, 120°–170°W). A phase is classified based on the Oceanic Niño Index (ONI), a three-month running average of this index relative to the 1991–2020 climatology: El Niño or La Niña requires an anomaly of at least +0.5°C or -0.5°C for at least five consecutive overlapping three-month seasons.

As of mid-August 2025, the equatorial Pacific remains in **ENSO-neutral conditions**. The most recent weekly Niño 3.4 index (centered on August 13, 2025) was -0.3°C, which is within the neutral range (between -0.5°C and +0.5°C). The three-month average for June–August 2025 is approximately -0.02°C to -0.06°C, confirming neutral status. Atmospheric indicators, such as trade winds and cloudiness over the central Pacific, also align with neutral conditions, though there are subtle signs of strengthening easterly trade winds and cooler subsurface anomalies in the eastern Pacific that could signal an emerging La Niña pattern.

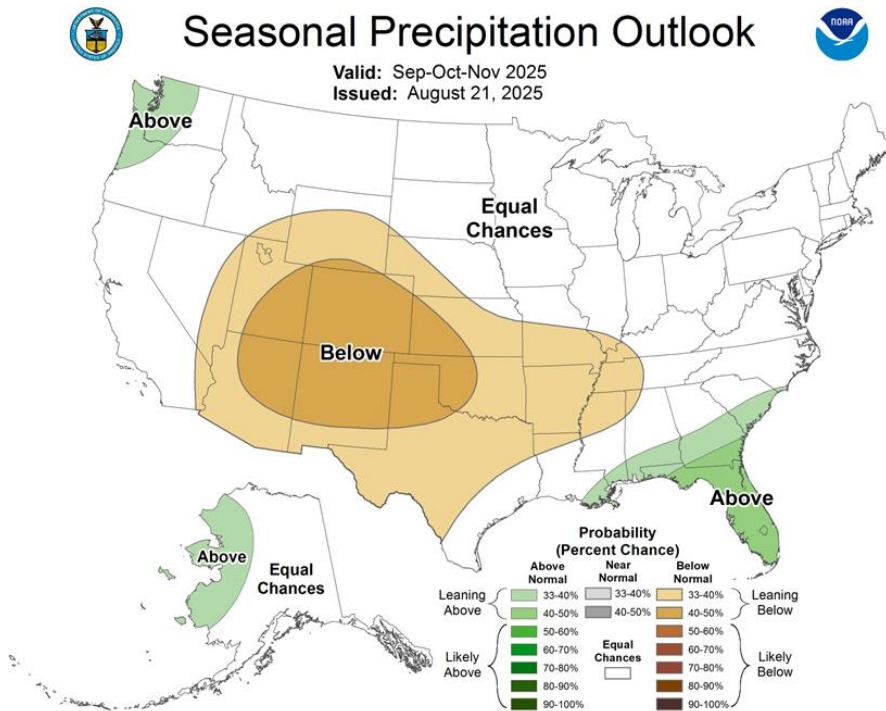
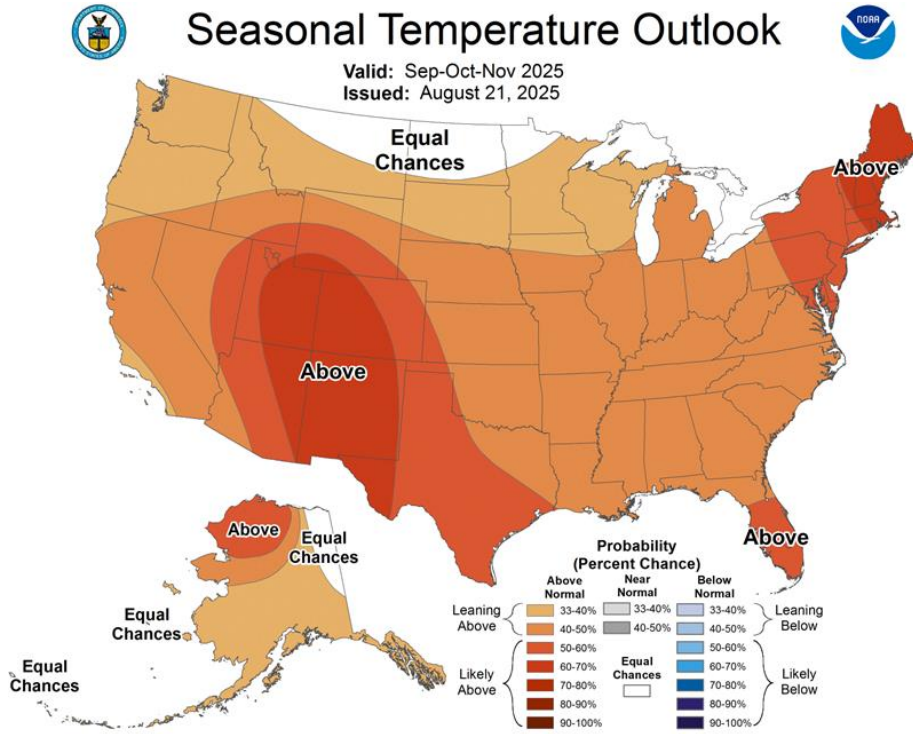
Source: cpc.ncep.noaa.gov

Seasonal Precipitation and Temperature Outlooks:

The current precipitation outlook is below normal for the region while the current temperature outlook is above normal for the region. Maps of this forecast are pictured below.



Source: https://www.cpc.ncep.noaa.gov/products/predictions/long_range/seasonal.php?lead=1



C



Buckman Direct Diversion Monthly Native and SJC Diversions (MG)

	Total Diverted	Total Native Diverted	County Native Rio Grande Diversions					TCLC Native Rio Grande Diversion				San Juan-Chama Diversions			
			Total County Native Diverted	County Native 4842	County Native SP-4842-A	County Native RG-20516 et al. -C into SP-4842	County Native RG-20516 et al. -A & -B into SP-4842-A	Total TCLC Native Diverted	TCLC Native SP-4842-A	TCLC Native RG-20516 et al. -A & -B into SP-4842-A	Total SJC Diverted	City SJC SP-2847-E Diverted	County SJC SP-2847-E Diverted	TCLC SJC SP-2847-N-A Diverted	
2025 Jan	106,274	40,304	40,304	40,304	0.000	0.000	0.000	0.000	0.000	0.000	65,970	65,970	0.000	0.000	
Feb	102,131	9,191	9,191	9,191	0.000	0.000	0.000	0.000	0.000	0.000	92,940	92,940	0.000	0.000	
Mar	183,734	83,756	83,756	83,756	0.000	0.000	0.000	0.000	0.000	0.000	99,979	99,979	0.000	0.000	
Apr	220,613	153,687	153,687	153,687	0.000	0.000	0.000	0.000	0.000	0.000	66,926	66,926	0.000	0.000	
May	299,308	95,331	95,331	95,331	0.000	0.000	0.000	0.000	0.000	0.000	203,978	203,978	0.000	0.000	
Jun	245,759	20,273	20,273	20,273	0.000	0.000	0.000	0.000	0.000	0.000	225,487	225,487	0.000	0.000	
Jul	243,883	11,468	11,468	11,468	0.000	0.000	0.000	0.000	0.000	0.000	232,415	232,415	0.000	0.000	
Aug	131,163	0.000	0.000	0.000	0.000	0.000	0.000	0.000	0.000	0.000	131,164	131,164	0.000	0.000	
Total	1,532,865	414,010	414,010	414,010	0.000	0.000	0.000	0.000	0.000	0.000	1,118,858	1,118,858	0.000	0.000	
Max Allowable		773,528	703,101	421,010	0.000	121,342	160,749	47,682	22,746	70,428	2,207,481	2,087,730	119,750	0.000	
Remaining		359,519	289,091	7,000	0.000	121,342	160,749	47,682	22,746	70,428	1,088,622	968,872	119,750	0.000	

Projected Diversions (MG)

	Total Diverted	Total Native Diverted	Total County Native Diverted	County Native 4842	County Native SP-4842-A	County Native RG-20516 et al. -C into SP-4842	County Native RG-20516 et al. -A & -B into SP-4842-A	Total TCLC Native Diverted	TCLC Native SP-4842-A	TCLC Native RG-20516 et al. -A & -B into SP-4842-A	Total SJC Diverted	City SJC SP-2847-E Diverted	County SJC SP-2847-E Diverted	TCLC SJC SP-2847-N-A Diverted
2025 Sep	228	0	0	0	0	0	0	0	0	0	228	228	0	0
Oct	228	0	0	0	0	0	0	0	0	0	228	228	0	0
Nov	130	98	98	7	0	91	0	0	0	0	33	33	0	0
Dec	196	163	163	0	0	31	132	0	0	0	33	33	0	0
Total Projected	782	261	261	7	0	121	132	0	0	0	521	521	0	0

SJC in Storage as of Monday, January 1, 0001 (MG)

City SJC in Storage	County SJC in Storage	TCLC SJC in Storage
---------------------	-----------------------	---------------------



Buckman Direct Diversion Monthly SJC and Native Diversions								
Dec-24		In Acre-Feet						
Month	Total SJC + Native Rights	SP-4842 RG Native COUNTY	SD-04842-A RG Native VIA SFC LAS CAMPANAS	SJC Call Total	SP-2847-E SJC Call CITY	SP-2847-N-A SJC Call LAS CAMPANAS	SP-2847-E SJC Undiverted CITY	All Partners Conveyance Losses
JAN	283.691	91.173	0.000	192.518	192.518	0.000	0.000	1.986
FEB	293.064	112.967	0.000	180.097	180.097	0.000	0.000	1.858
MAR	217.014	95.914	0.000	121.100	121.100	0.000	0.000	1.475
APR	396.998	255.245	67.230	74.523	74.523	0.000	0.000	1.004
MAY	750.899	395.038	123.438	232.423	232.423	0.000	0.000	1.347
JUN	642.136	371.118	7.114	263.905	263.905	0.000	0.000	1.743
JUL	652.169	320.362	74.513	257.295	257.295	0.000	0.000	1.166
AUG	647.277	0.000	0.000	659.885	659.885	0.000	12.608	3.210
SEP	666.797	0.000	0.000	776.587	776.587	0.000	109.791	3.604
OCT	612.559	0.000	0.000	631.170	631.170	0.000	18.612	5.811
NOV	385.574	154.074	0.000	231.501	231.501	0.000	0.000	1.755
DEC	353.083	214.183	0.000	138.900	138.900	0.000	0.000	1.053
TOTAL	5,901.261	2,010.073	272.294	3,759.904	3,759.904	0.000	141.010	26.014
In Million Gallons								
Month	Native COUNTY	SFC Native Las Campanas	SJC TOTAL	SJC CITY	SJC Las Campanas	SJC Undiverted CITY	All Partners Diversions	
JAN	29.698	0.000	61.974	61.974	0.000	0.000	91.672	
FEB	36.797	0.000	57.976	57.976	0.000	0.000	94.773	
MAR	31.242	0.000	38.910	38.910	0.000	0.000	70.153	
APR	83.142	21.899	23.913	23.913	0.000	0.000	128.954	
MAY	128.677	40.208	74.921	74.921	0.000	0.000	243.805	
JUN	120.885	2.317	84.961	84.961	0.000	0.000	208.164	
JUL	104.352	24.271	82.879	82.879	0.000	0.000	211.503	
AUG	0.000	0.000	208.462	208.462	0.000	4.107	208.462	
SEP	0.000	0.000	214.522	214.522	0.000	35.762	214.522	
OCT	0.000	0.000	197.347	197.347	0.000	6.062	197.347	
NOV	50.187	0.000	74.729	74.729	0.000	0.000	124.916	
DEC	69.766	0.000	44.837	44.837	0.000	0.000	114.604	
TOTAL	654.747	88.695	1,165.432	1,165.432	0.000	45.932	1,908.874	