

In closing, my professional opinion is as follows:

All the windows and doors of the casita are non-historic (1987 – 2015) with no historical significance.

If you have any questions, please contact me at 505-379-7900.

Assessment prepared by: *Ra N. Patterson*

RPA & ASSOCIATES, LLC | WINDOW & DOOR CONDITION AND INTEGRITY CODES

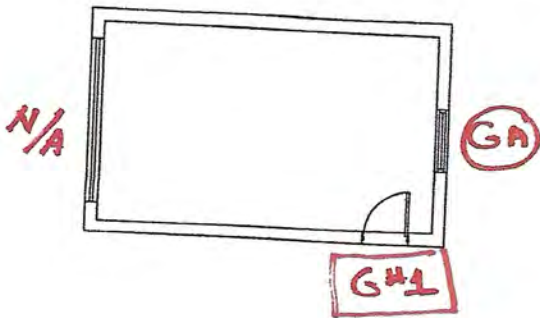
CODE	CONDITION AND INTEGRITY CODES
P = PREMIUM	EXTERIOR FINISHES AND SASH, FRAME, AND CASING MEMBER IN PREMIUM OR VERY GOOD CONDITION.
	PUTTY GLAZE INTACT.
	ONLY COSMETIC TOUCH-UP, IF NEEDED.
S = SATISFACTORY	EXTERIOR FINISHES FADING AND WORN IN PLACES BUT STILL ADHERED TO THE WINDOW MEMBERS.
	PUTTY GLAZING CRACKING BUT INTACT AND ALL SASHES, FRAMES, AND CASING MEMBER WITH LESS THAN 30% -
	40% DETERIORATION.
F = FAIR	EXTERIOR FINISHES HAVE CRACKED & PEELED. MISSING TO BARE SURFACE.
	PUTTY GLAZING CRACKING AND MISSING IN 30% - 40% OF THE SASHES. ALL SASHES, FRAMES, AND CASINGS HAVE
	SOME MEMBERS 30% - 40% COMPLETELY DETERIORATED.
U = UNSATISFACTORY	EXTERIOR FINISHES HAVE COMPLETELY DETERIORATED.
	PUTTY GLAZING MOSTLY MISSING. ALL SASHES, FRAMES, AND CASING MEMBERS HAVE MORE THAN 30% - 40%
	DETERIORATION, BEYOND REPAIR.

NOTES:

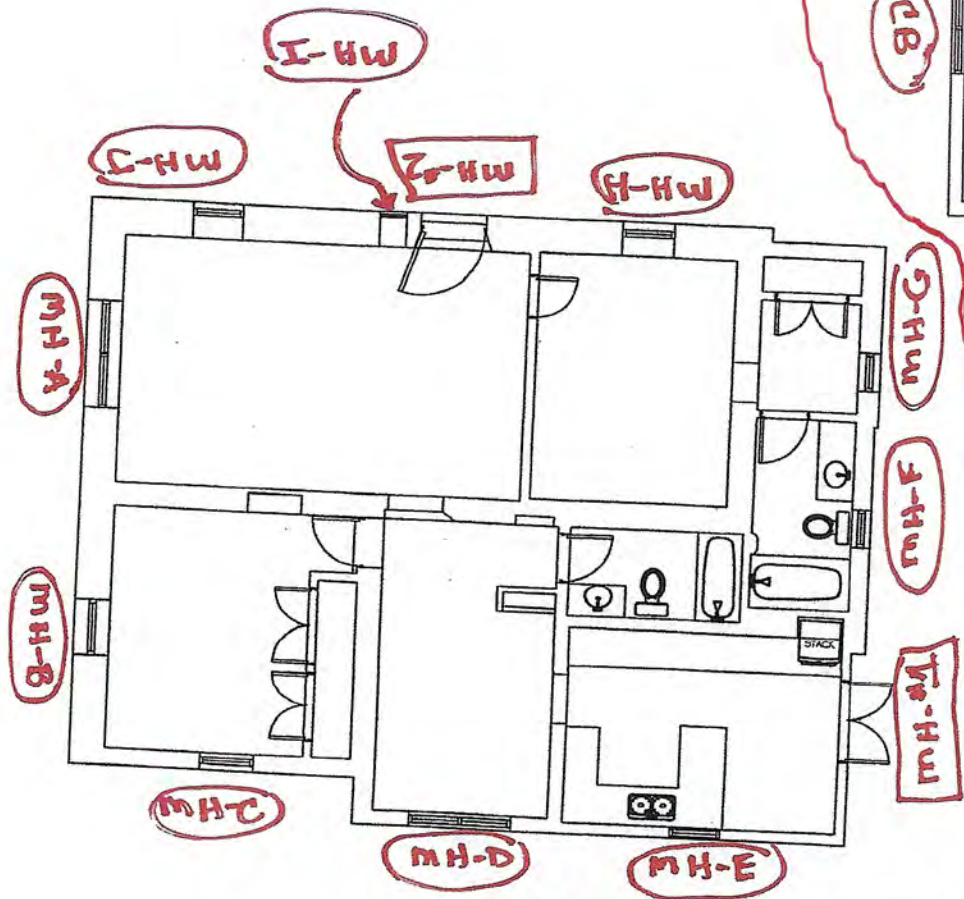
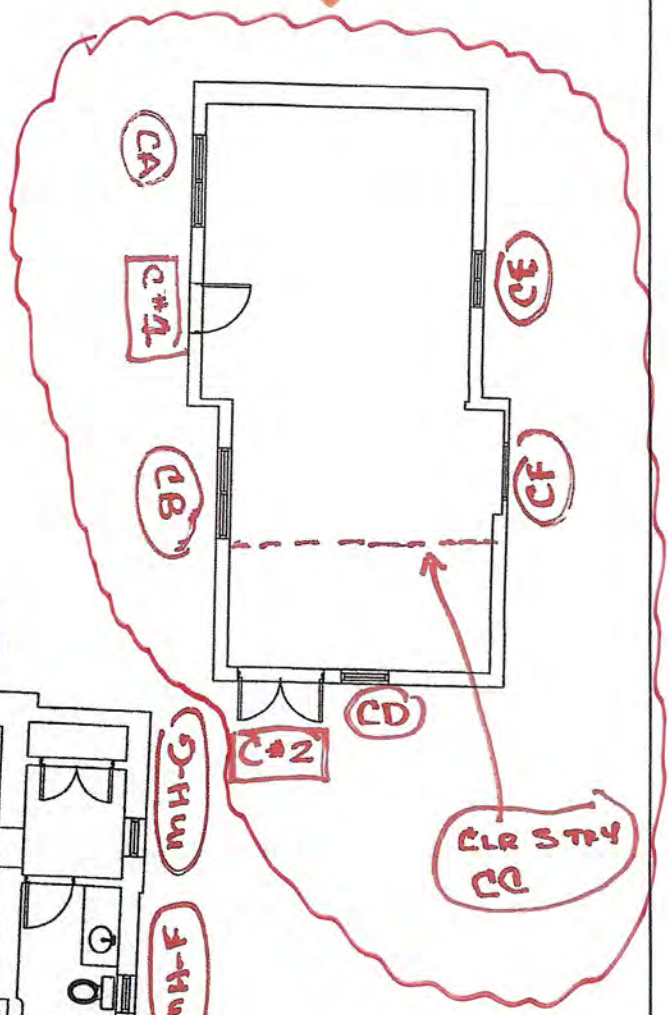
RPA & ASSOCIATES, LLC | 433 CALLE LA PAZ – CASITA, SANTA FE, NM 87501

LABEL	WINDOW & DOOR DESCRIPTION	CONDITION & INTEGRITY CODE	HISTORIC/NON-HISTORIC - AGE
CA	60 x 46 HS	F	NON-HISTORIC – MARVIN 1987
DR# C1	36 x 80 LH INSWING 6-PANEL FIBER GLASS DOOR	S	NON-HISTORIC – THERMA TRU 2015
CB	60 x 46 HS	F	NON-HISTORIC – MARVIN 1987
DR #C2	60 x 81 RH OUTSWING WHITE ALUMINUM CLAD/WOOD DOOR 2W5H	S	NON-HISTORIC – POZZI 2015
CC	32 x 28 AWNING/96 x 33/32 x 28 AWNING	F	NON-HISTORIC – MARVIN 1987
CD	28 x 48 FXD/AWNING	S	NON-HISTORIC – MARVIN 1987
CE	36 x 46 HORIZONTAL SLIDER 1-LT	S	NON-HISTORIC – MARVIN 1987
CF	36 x 30 AWNING 1-LT	S	NON-HISTORIC – MARVIN 1987

NOTES:



CASITA



AUSTIN-GREGORY
 RENOVATION
 433 CALLE LA PAZ,
 SANTA FE, NEW MEXICO

MAY 28, 2025
 SCALE: 3/32" = 1'-0"

Casita
Window
CA



Text



Casita
Door
C#1




Casita
Window
CB



Casita
Door
C2





Casita
Window
Clr Stry
CC

Casita
Window
CD



Casita
Window
CE



Casita
Window
CF



433 Calle La Paz
Casita
West Elevation



433 Calle La Paz
Casita
South Elevation



433 Calle La
Paz
East
Elevation



433 Calle La Paz
Casita
East
Elevation



A photograph of a building's exterior wall. The wall is made of light-colored, textured concrete or stucco. A prominent feature is a window with a bright blue frame, set within a recessed area of the wall. Below the window is a thick, horizontal concrete ledge. In the foreground, another window with a blue frame is partially visible, showing a reflection of a person with white hair. The background consists of lush green trees under a blue sky with scattered white clouds.

433 Calle La Paz
Casita
South Elevation
Clr Stry