

RPA & Associates, LLC.

PRESERVING OUR HISTORY

508 Ortega Rd NW Los Ranchos de Albuquerque, NM 87114

P.O. Box 10328 Albuquerque, NM 87184

505-379-7900

rpahistoric@gmail.com

TO Martinez Architecture Studio PC

1524 Paseo de Peralta

Santa Fe, NM 87501

studio@martinezarch.com

HISTORIC ASSESSMENT
NO. 050625-HA



JOB	DATE
433 CALLE LA PAZ – MAIN HOUSE, SANTA FE, NM 87505	06/05/2025

LOCATION	DESCRIPTION
WEST	
MH-A	71 x 38 FXD/FXD (TWIN 35 ½ x 38) 3W2H BARN SASH
MH-B	32 x 64 DH 2W1H/1-LT
SOUTH	
MH-C	35 ½ x 64 SH WHITE VINYL 1/1 2001
MH-D	67 x 60 (TWIN 33 x 60) WHITE CLAD/WOOD 3W1H/3W1H – POZZI 2015
MH-E	33 x 32 DH WHITE CLAD/WOOD 3W1H/3W1H – POZZI 2015
EAST	
DR # MH-1	60 x 81 OUTSWING RH DOOR WHITE CLAD/WOOD 2W5H – POZZI 2015
MH-F	26 x 32 DH WHITE CLAD/WOOD 2W1H/2W1H – POZZI 2015
MH-G	21 x 31 FXD BARN SASH STOPPED INTO A FRAME, HAS A TINT FILM APPLIED TO GLASS 2W2H – HISTORIC BUT THE SASH IS ROTTED BEYOND REPAIR OVER 60%
NORTH	
MH-H	32 x 64 DH 2W1H/1-LT
DR # MH-2	36 x 80 RH 3-LITE/PLANK – HISTORIC
MH-I	14 x 51 FXD STOPPED IN INSULATED GLASS 1-LT – 1994
MH-J	29 x 48 DH 2W1H/1-LT

In closing, my professional opinion is as follows:

Windows B & H and J are historic however there are signs of water penetration underneath the sills of the water causing structural integrity damage to the adobe. The windows would need to be removed to properly flash the openings to stop the water penetration. The window jambs are the buck in the openings. Removal of the window would destroy the jamb and cause the historic window to be non-reusable and non-restorable.

DR #2 is historic.

Window G is historic however rotted beyond 40% and non-restorable.

Windows and doors A, C, D, E, DR #1, F and I are non-historic.

If the windows and doors are replaced must be matched to historic requirements and "like and kind" to the existing openings.

If you have any questions, please contact me at 505-379-7900.

Assessment prepared by: *Ra N. Patterson*

RPA & ASSOCIATES, LLC | WINDOW & DOOR CONDITION AND INTEGRITY CODES

CODE	CONDITION AND INTEGRITY CODES
P = PREMIUM	EXTERIOR FINISHES AND SASH, FRAME, AND CASING MEMBER IN PREMIUM OR VERY GOOD CONDITION.
	PUTTY GLAZE INTACT.
	ONLY COSMETIC TOUCH-UP, IF NEEDED.
S = SATISFACTORY	EXTERIOR FINISHES FADING AND WORN IN PLACES BUT STILL ADHERED TO THE WINDOW MEMBERS.
	PUTTY GLAZING CRACKING BUT INTACT AND ALL SASHES, FRAMES, AND CASING MEMBER WITH LESS THAN 30% -
	40% DETERIORATION.
F = FAIR	EXTERIOR FINISHES HAVE CRACKED & PEELED. MISSING TO BARE SURFACE.
	PUTTY GLAZING CRACKING AND MISSING IN 30% - 40% OF THE SASHES. ALL SASHES, FRAMES, AND CASINGS HAVE
	SOME MEMBERS 30% - 40% COMPLETELY DETERIORATED.
U = UNSATISFACTORY	EXTERIOR FINISHES HAVE COMPLETELY DETERIORATED.
	PUTTY GLAZING MOSTLY MISSING. ALL SASHES, FRAMES, AND CASING MEMBERS HAVE MORE THAN 30% - 40%
	DETERIORATION, BEYOND REPAIR.

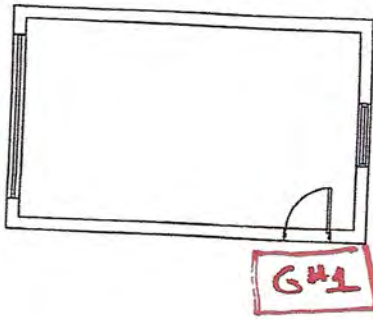
NOTES:

RPA & ASSOCIATES, LLC | 433 CALLE LA PAZ – MAIN HOUSE, SANTA FE, NM 87505

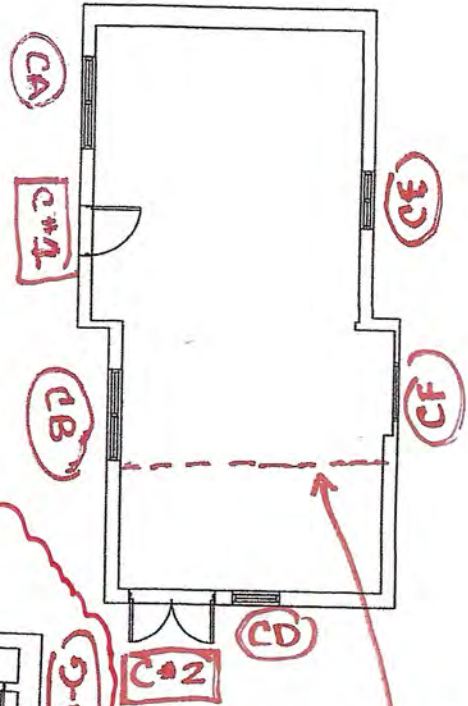
LABEL	WINDOW & DOOR DESCRIPTION	CONDITION & INTEGRITY CODE	HISTORIC/NON-HISTORIC - AGE
MH-A	71 x 38 (TWIN 35 ½ x 38) FXD/FXD 3W2H BARN SASH	F	HISTORIC – NOT ORIGINAL, THE ORIGINAL WINDOWS WERE DOUBLE HUNGS, JAMB SHOW THAT TYPE OF CONSTRUCTION
MH-B	32 x 64 DOUBLE HUNG 2W1H/1-LT	F	HISTORIC
MH-C	35 ½ x 64 SINGLE HUNG WHITE VINYL 1/1	S	NON-HISTORIC – 2001
MH-D	67 x 60 (TWIN 33 x 60 DH) WHITE CLAD/WOOD 3W1H/3W1H	S	NON-HISTORIC – POZZI MANUFACTURED 2015
MH-E	33 x 32 DOUBLE HUNG WHITE CLAD/WOOD 3W1H/3W1H	S	NON-HISTORIC – POZZI MANUFACTURED 2015
DR #MH-1	60 x 81 OUTSWING RH DOOR WHITE CLAD/WOOD 2W5H		NON-HISTORIC – POZZI MANUFACTURED 2015
MH-F	26 x 32 DOUBLE HUNG WHITE CLAD/WOOD 2W1H/2W1H	S	NON-HISTORIC – POZZI MANUFACTURED 2015
MH-G	24 x 31 FXD BARN SASH – STOPPED INTO FRAME, HAS A TINT FILM ON GLASS	U	HISTORIC – SASH IS ROTTED BEYOND REPAIR OVER 60%
MH-H	32 x 64 DOUBLE HUNG 2W1H/1-LT	F	HISTORIC
DR # MH-2	36 x 80 RH 3-LITE PLANK INSWING DOOR ALL WOOD	S	HISTORIC
MH-I	14 x 51 FXD STOPPED WITH INSULATED GLASS	S	NON-HISTORIC – INSULATED GLASS WITH 1994 QUARTER ROUND STOP 1994
MH-J	29 x 48 DOUBLE HUNG 2W1H/1-LT	F	HISTORIC

NOTES:

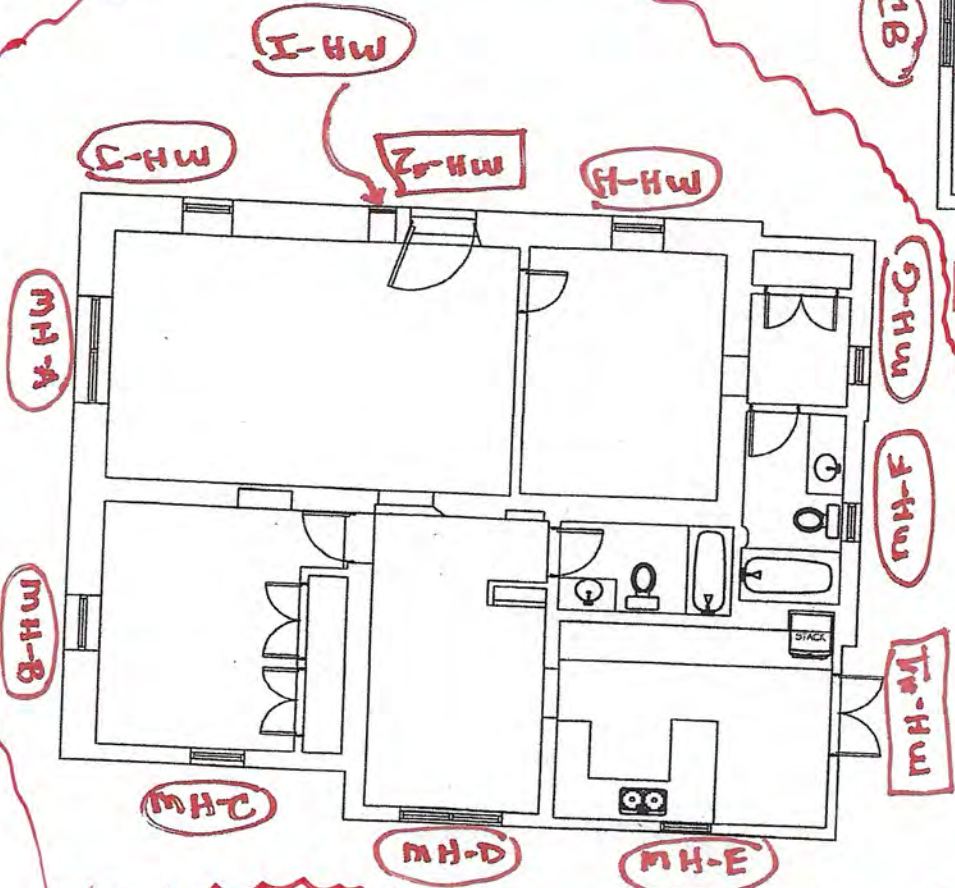
N/A



MAIN HOUSE



CLR STRY
CC



AUSTIN-GREGORY
 RENOVATION
 433 CALLE LA PAZ,
 SANTA FE, NEW MEXICO

MAY 28, 2025
 SCALE: 3/32" = 1'-0"



Main House
Window
MH-A



Main House
Window
MH-B



Main House
Window
MH-C



Main House
Window
MH-D



Main House
Window
MH-E

Main House
Door
MH-#1



Main House
Window
MH-F





Main House
Window
MH-G



Main House
Window
MH-H

Main House
Door
MH-#2



Main House
Window
MH-I



Main House
Window
MH-J



433 Calle La Paz
Main House
West Elevation



433 Calle La Paz
Main House
South Elevation

1003269

CITY OF SANTA FE
WASTE SERVICES





433 Calle La Paz
Main House
South Elevation

433 Calle La Paz
Main House
North
Elevation



433 Calle La Paz
Main House
South Elevation



433 Calle La Paz
Main House
West Elevation



433 Calle La Paz
Main House
East Elevation

