

# City of Santa Fe's *Roadways and Trails Capital Projects*



CITY OF SANTA FE

## FY 2025 Accomplishment Report

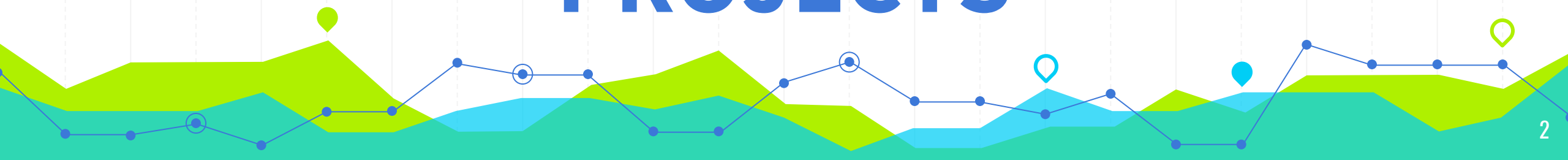
**A Presentation to Public Works and Utility Committee  
June 30, 2025**

**Romella Glorioso-Moss, PhD, CPM, AICP**  
Capital Projects Manager  
**Kody Keelin, Project Manager**  
Complete Streets  
Public Works Department

# 28

## FY 2025

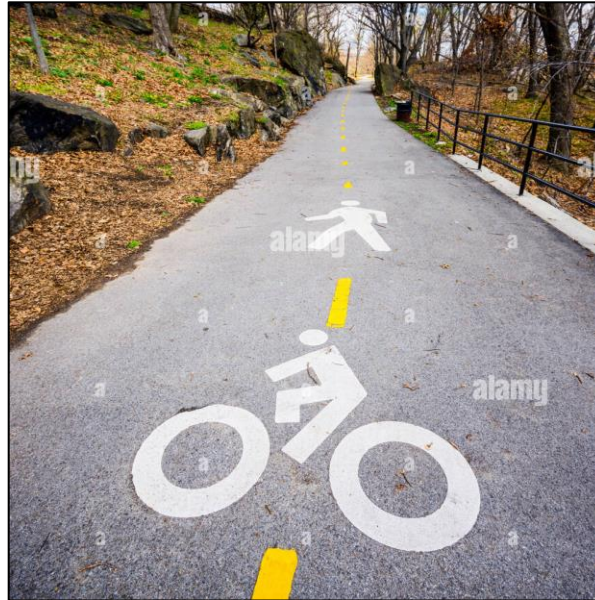
# ROADWAYS & TRAILS PROJECTS



# 28 ROADWAYS & TRAILS PROJECT (FY 2025)



**21 roadways**



**6 trails**

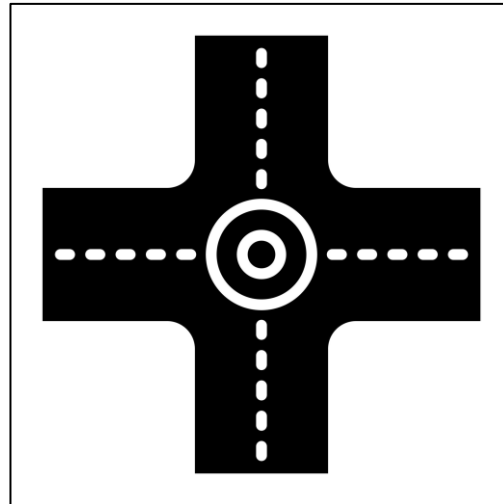


**1 bicycle  
wayfinding  
signage**

# ROADWAY PROJECT TYPES



**7 Roadway  
Reconstruction/  
2 New Roadways**



**10 Intersection  
Improvements**



**1 Bridge**

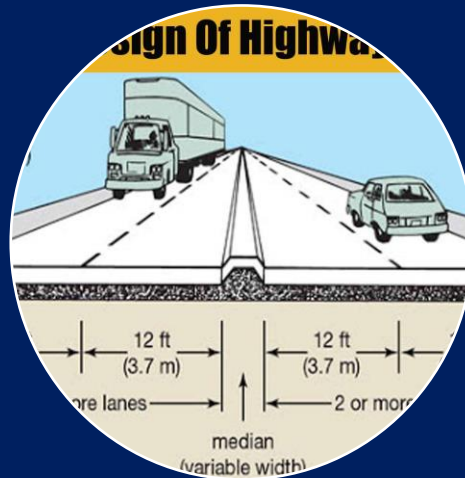


**1 Underpass**

# PROJECT PHASES (FY 2025)



Planning (2)



Design (16)



Construction (10)



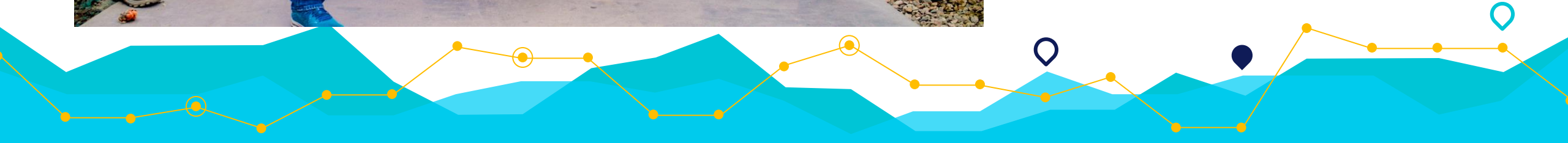
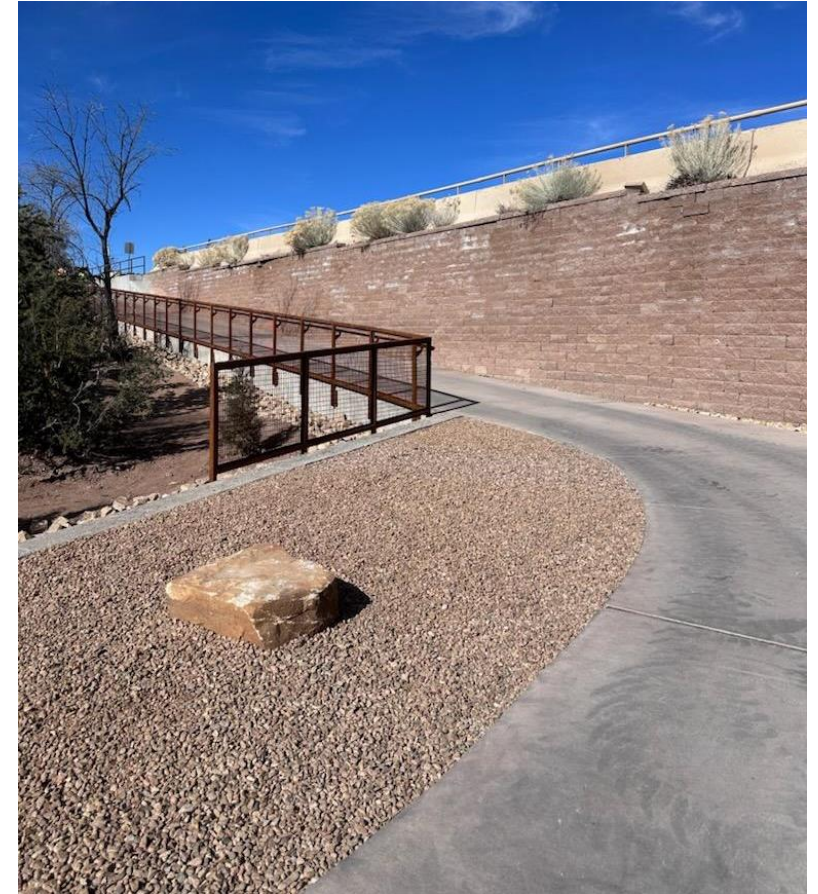
# Completed construction of 2 trails

El Camino Real Academy Trail  
(Cottonwood Rd to Alexander  
Estates) \$1M

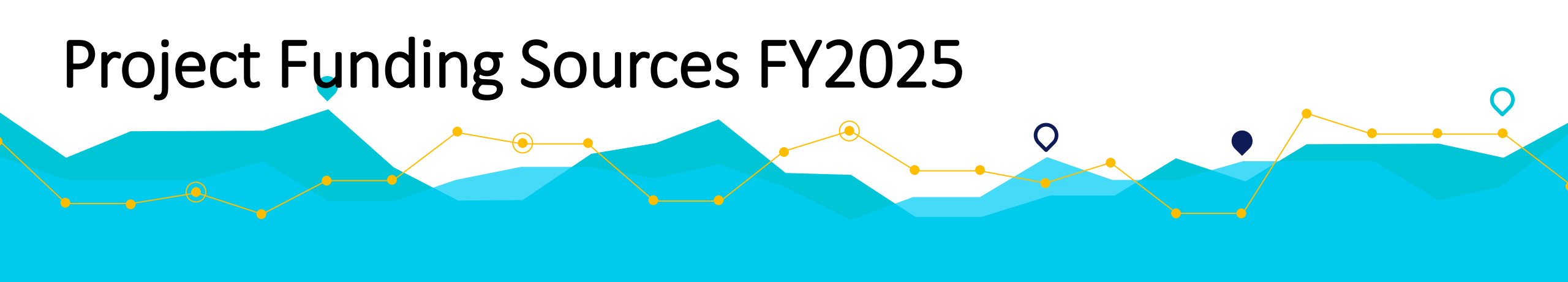


# Completed construction of 2 trails

Canada Rincon Trail (Calle Mejia to Calle Francesca) \$2.75M



# Project Funding Sources FY2025



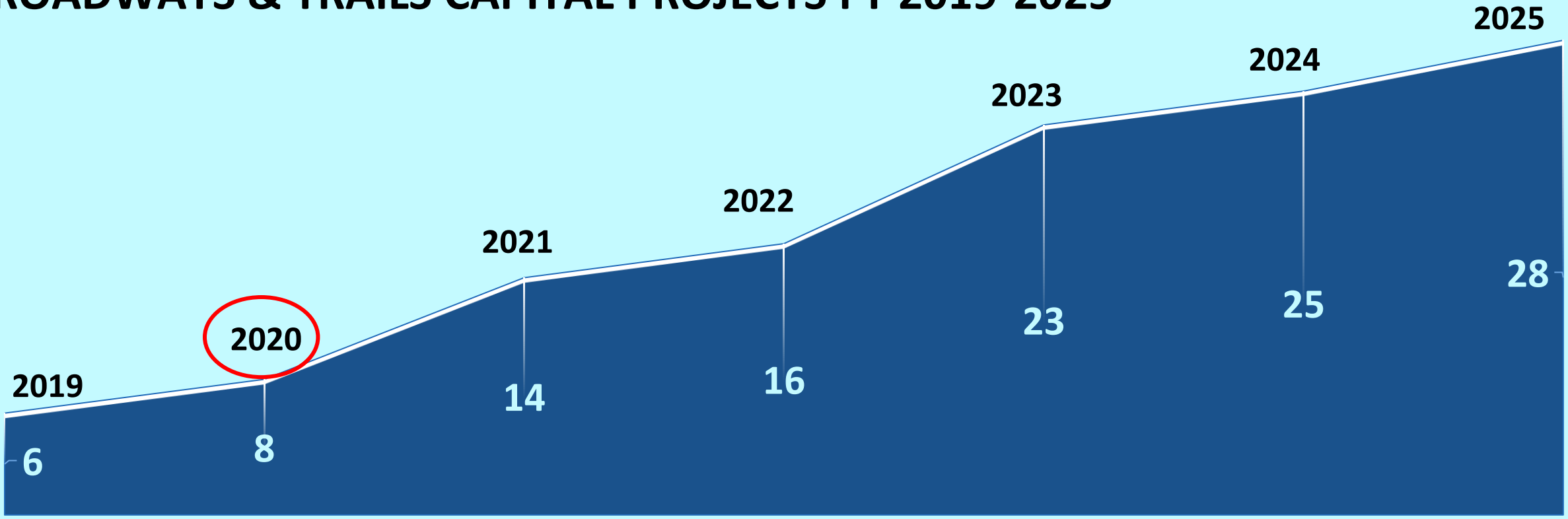
<b>Federal \$16.9M</b> <b>(76%)</b>	<b>State \$3.4M</b> <b>(18%)</b>
	<b>City \$1.4M</b> <b>(6%)</b>

**Federal \$16.9M**  
**(76%)**

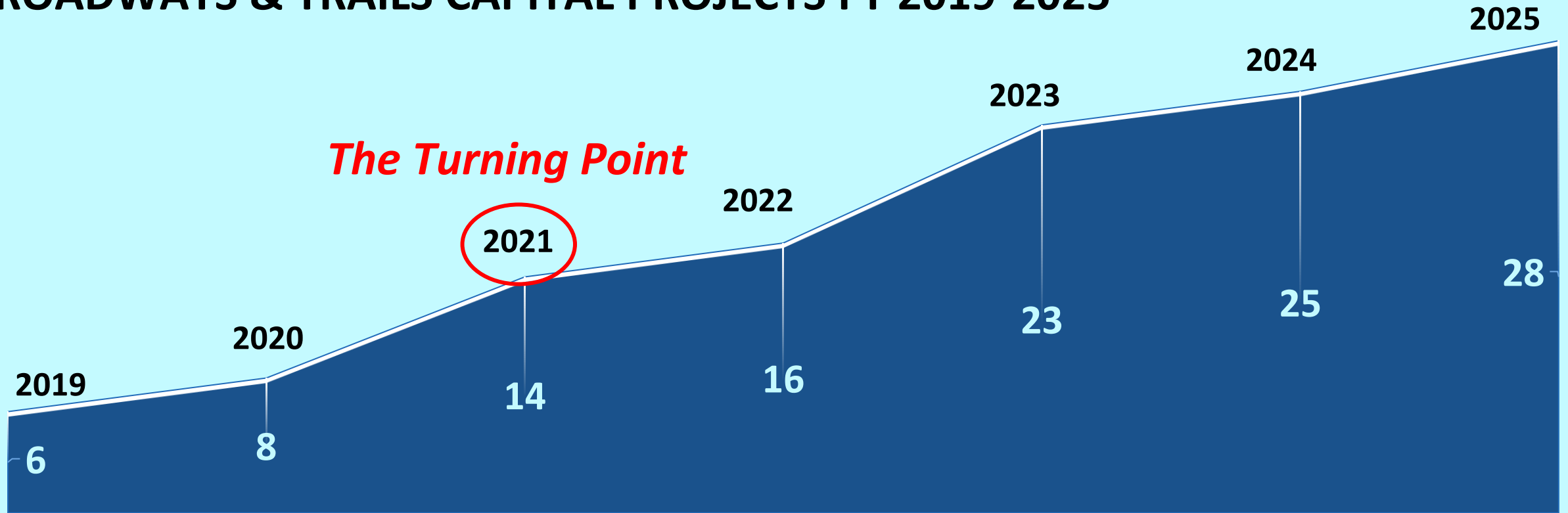
**State \$3.4M**  
**(18%)**

**City \$1.4M**  
**(6%)**

# ROADWAYS & TRAILS CAPITAL PROJECTS FY 2019-2025



# ROADWAYS & TRAILS CAPITAL PROJECTS FY 2019-2025



# Shift in Planning Culture



CITY OF SANTA FE



# Major Planning Documents (FY 2025)



Planning



- ❖ SFMPO Metropolitan Transportation Plan 2015-2040 (15/29)
- ❖ Infrastructure Capital Improvements Plan 2025-2029 (8/23)
- ❖ BPAC Strategic Plan 2023-2033 (6/11)

# FUNDING SOURCES

## FY 2020



CITY OF SANTA FE



CITY OF SANTA FE



## FY 2021 - PRESENT



ACTIVE TRANSPORTATION



NATIONAL  
HIGHWAY SAFETY  
ADMINISTRATION



TRANSPORTATION  
ALTERNATIVES



TPF



NMDOT



Road Fund

# Shift to a Strong Road Safety Culture



# Shift to a Strong Road Safety Culture



## COMPLETE STREETS

## WHAT IS A COMPLETE STREET?



# Shift to a More Sustainable Infrastructure

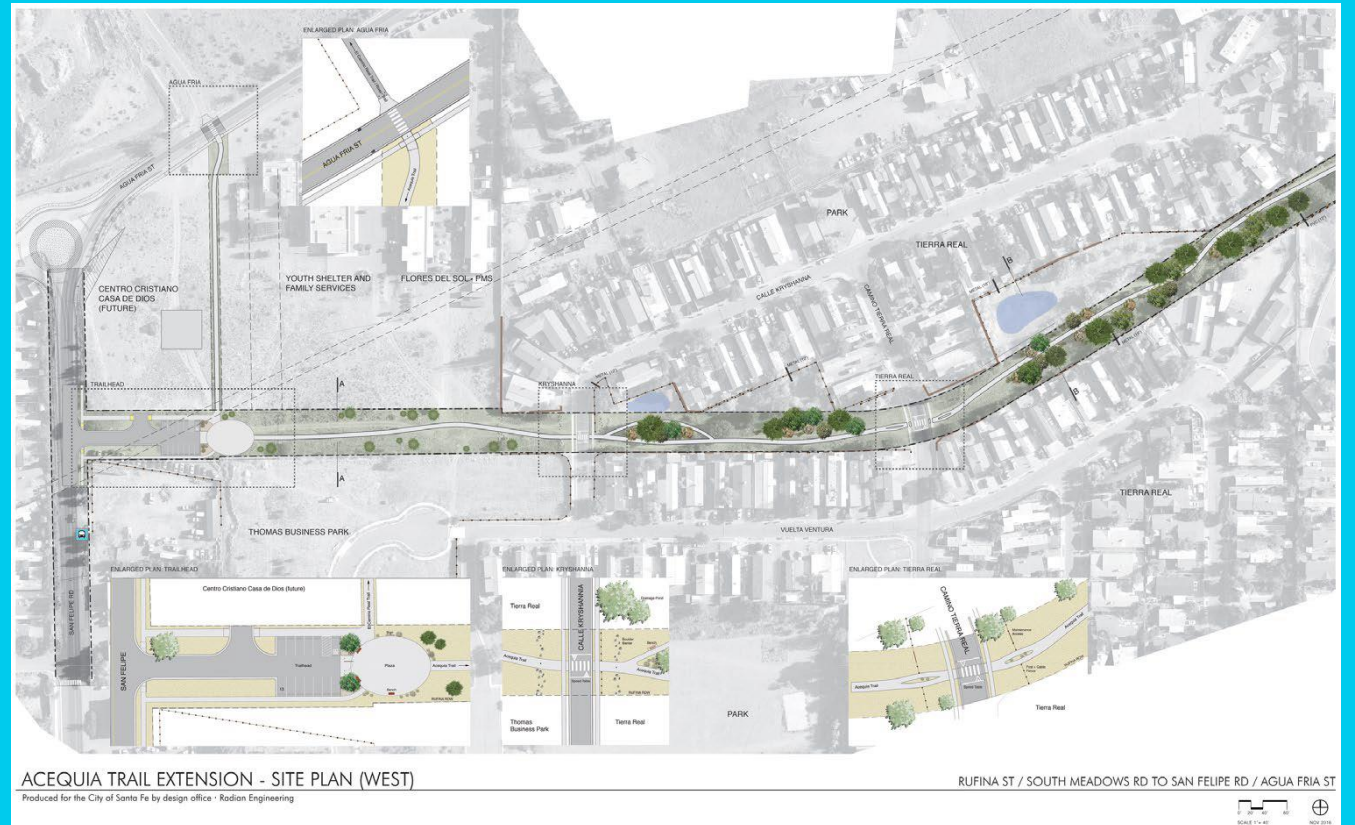


Camino Entrada Roundabout Project (Built 2023)

# Shift to a More Sustainable Infrastructure



Green Infrastructure along  
Acequia Trail Underpass (Built 2017)



Acequia Trail Extension (Rufina – San Felipe Rd) Design Phase

# THE GUADALUPE STREET RECONSTRUCTION PROJECT

City of Santa Fe's Flagship Roadway Project

## Guadalupe Street – from Agua Fria to Paseo de Peralta



# HISTORICAL BACKGROUND OF GUADALUPE ST.



1887-1941 Santa Fe Branch of Chili Line runs from Railyard North along Guadalupe and Jefferson

1974 Taos Hwy closes and Guadalupe St became the formal highway connector to Hwy 84/285.

# PROJECT TIMELINE

2015

*RSA COMPLETED*

2017

*ENG. DESIGN STARTED &  
1<sup>st</sup> PUBLIC MEETING HELD*

2022

*PROJECT  
PRODUCTION  
PACKAGE*

2023

*PROJECT  
BID*

2024

*CONSTRUCTION  
STARTED*

2025

*CONSTRUCTION  
COMPLETION*

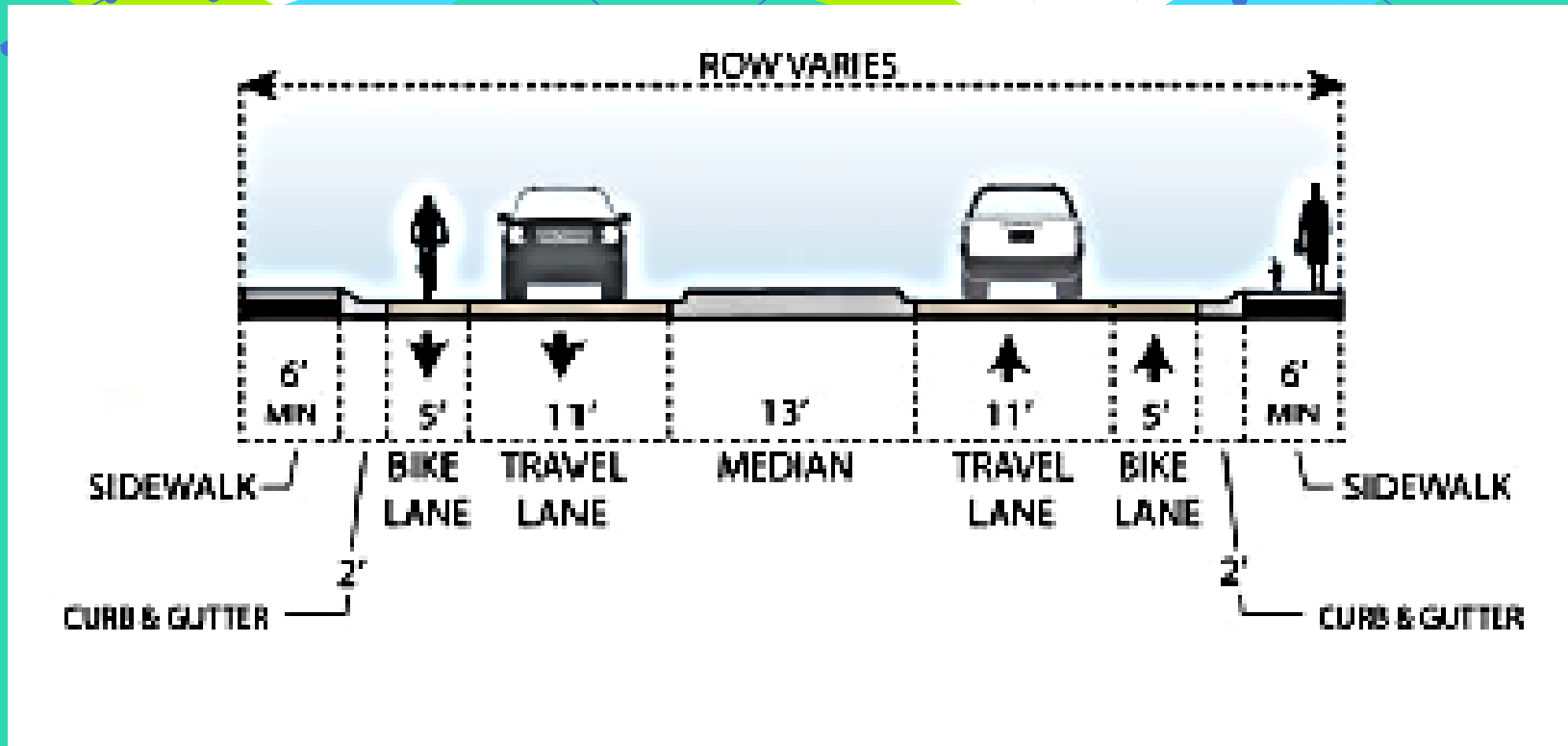
*SUMMER*

**\$11 M**

**100% HSIP funded  
Design & Construction**



# PROJECT SCOPE OF WORK



6' ADA compliant sidewalks on both sides of the street

5'-wide bike lanes on both sides of the street

2 11'-wide travel lanes

continues raised & landscaped medians with occasional breaks to permit left turns

fully reconstructed pavement

18 drive pads reconstructed

# PROJECT SCOPE OF WORK

DE VARGAS ST / AGUA FRIA ST



Extend Median

ALAMEDA ST



Eliminate EB Right-Turn Lane

WATER ST



Close Median

SAN FRANCISCO ST



Pedestrian Phase



JOHNSON ST



Left-Turn Bay

MCKENZIE ST / JEFFERSON ST



Extend Median

PARK AVE / CATRON ST



Add Median & Left-Turn Bay

JOSE ST



Full Access

SOLONA ST



Right-In/Right-Out/Left-Out

PASEO DE PERALTA



Double Southbound Left

# PROJECT BENEFITS



If hit by a car traveling:

● Fatality ● Person survives collision



20 MPH



5%



30 MPH



45%



40 MPH



85%

National Traffic Safety Board (2017) Reducing Speeding-Related Crashes Involving Passenger Vehicles. Available from: <https://www.ntsb.gov/safety/safety-studies/Documents/SS1701.pdf>



**Enhanced Safety for All**



**Improved Mobility & Accessibility**



**Public Health & Environmental Gains**



**Economic & Community Revitalization**

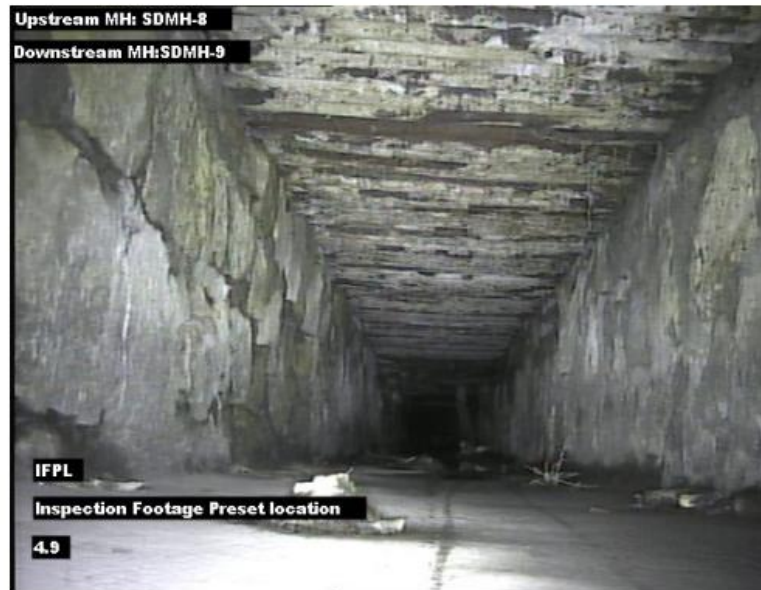


**Stronger Community & Civic Vitality**

# Failing Infrastructure



3 ft-deep sinkhole



Sidewalks on the West side have no foundation creating sinkholes posing hazards to pedestrians.

# Corrective Actions



**New storm water drainpipe**



**New concrete foundation**



**New sidewalk**

# Failing Infrastructure Needing Replacement

## Failing Pavement.



Corroded storm water drainage infrastructure creating sinkholes.

# Corrective Actions



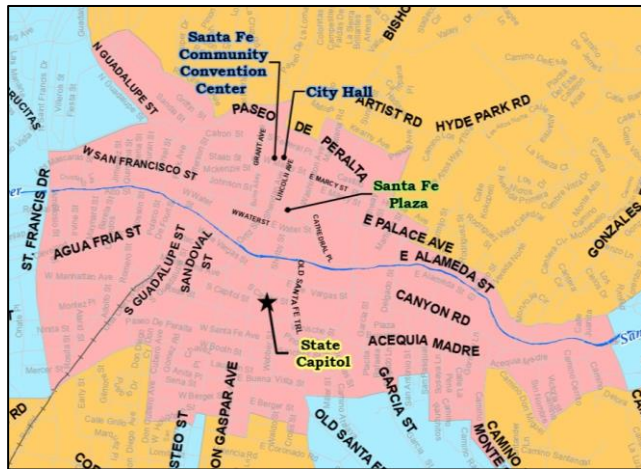
Install new storm drain water pipes.

# Failing Infrastructure Needing Replacement

Kept running into existing utilities that needed to be relocated, replaced or repaired, such as leaking gas main, water valves and sewer main.



# Construction Challenges



Construction challenge is that since this project is within the Guadalupe Historic District, we cannot do what we needed to do without permission from SHPO.

Funding requirement restrictions:  
Need to comply with NMDOT/FHWA



# Construction Challenges



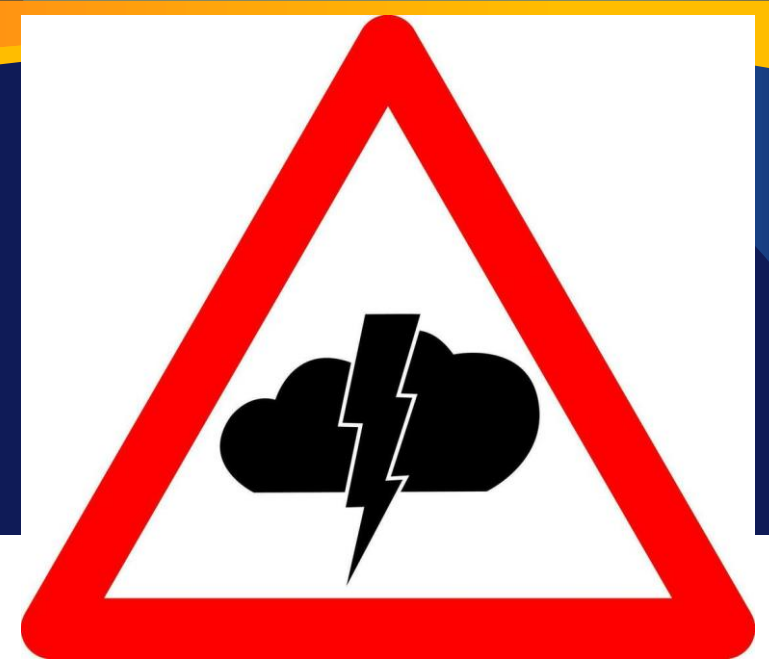
Road users navigating traffic controls through construction site.

# Construction Challenges

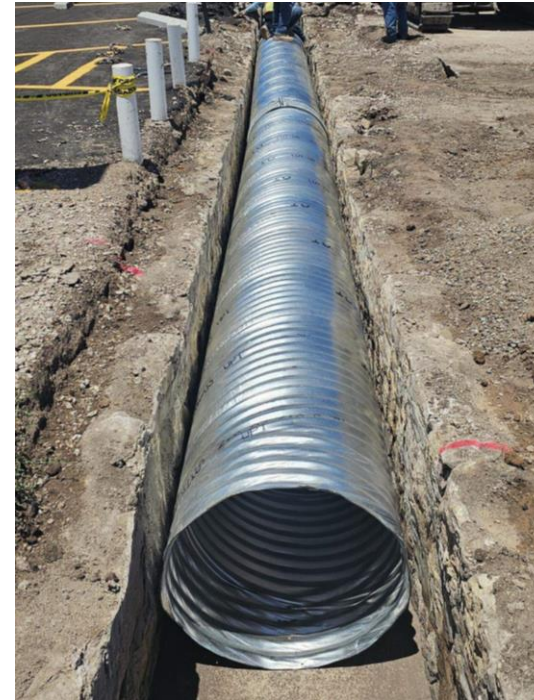
Limited access to businesses and residences.



# Construction Challenges



# Target Substantial Completion Date August 30, 2025





# THANK YOU

Any questions?

[rsglorioso-moss@santafenm.gov](mailto:rsglorioso-moss@santafenm.gov)

[kwkeelin@santafenm.gov](mailto:kwkeelin@santafenm.gov)

(505) 955-6623

