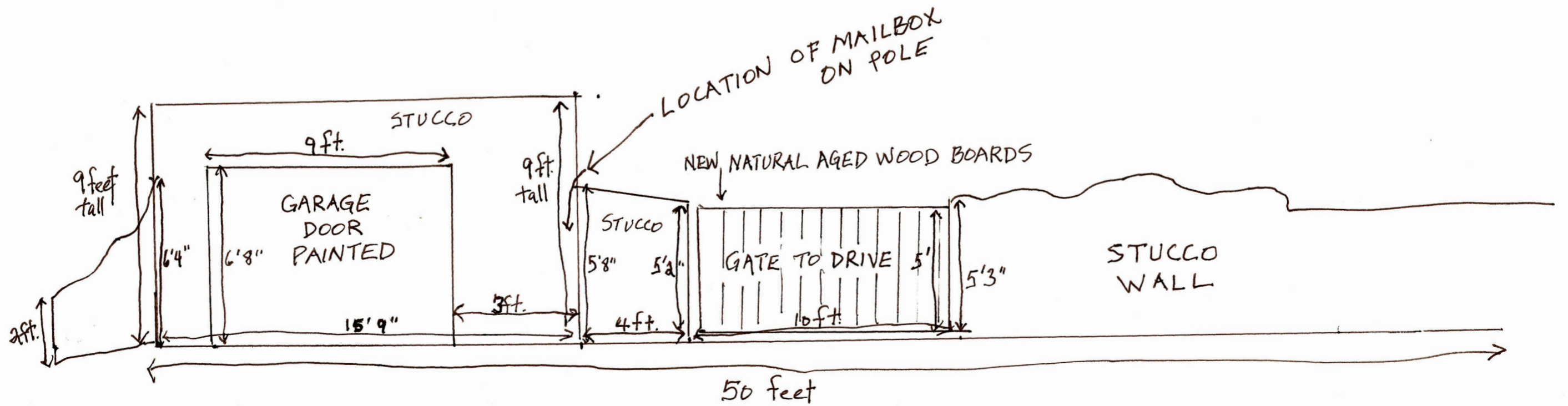
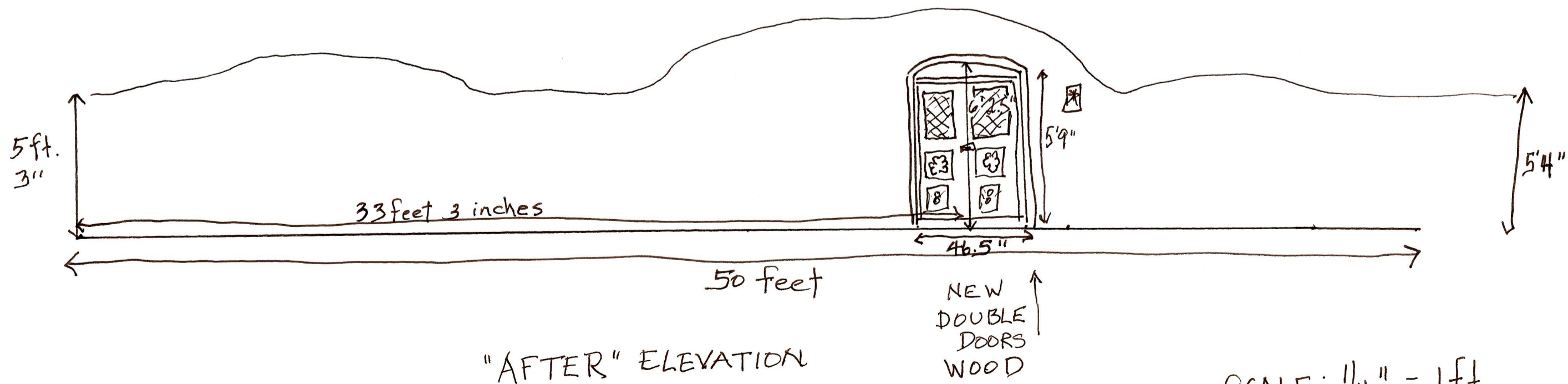
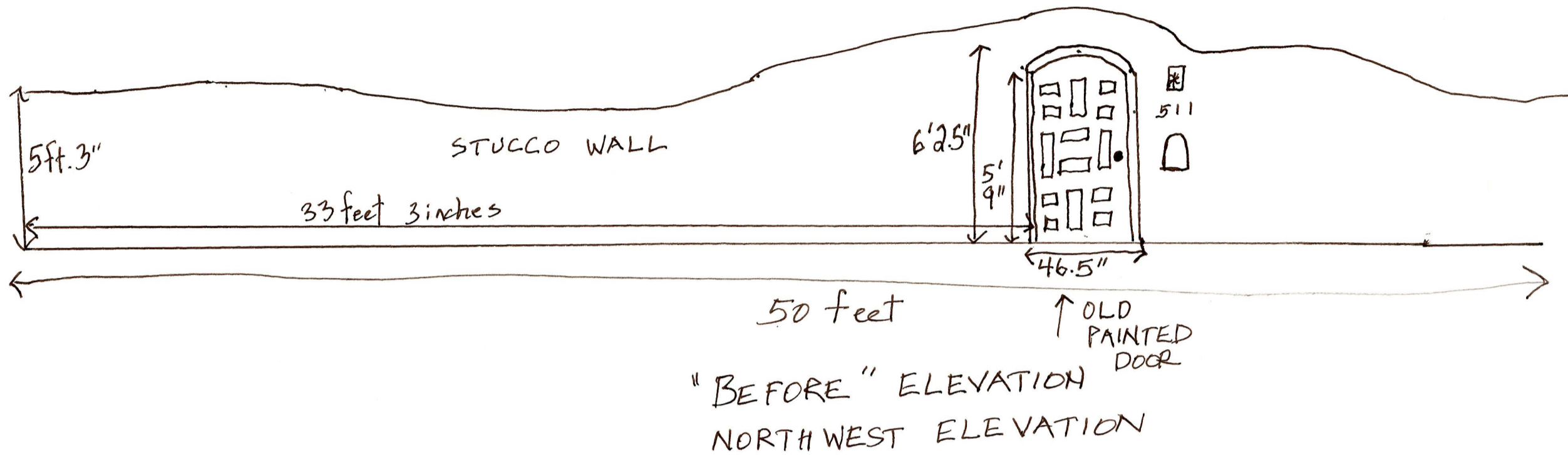


"BEFORE"  
NORTHWEST ELEVATION

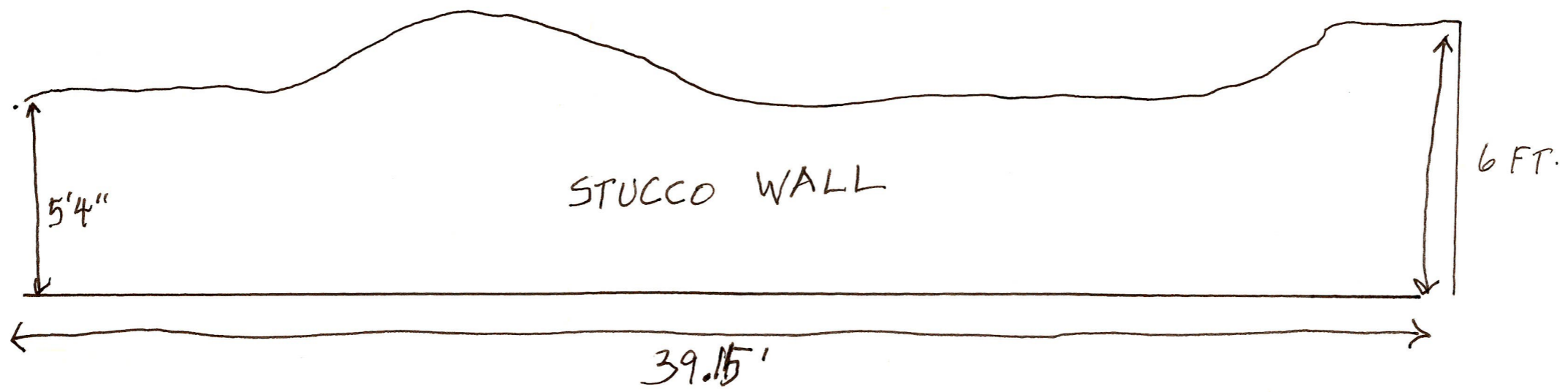


"AFTER"  
NORTHWEST ELEVATION

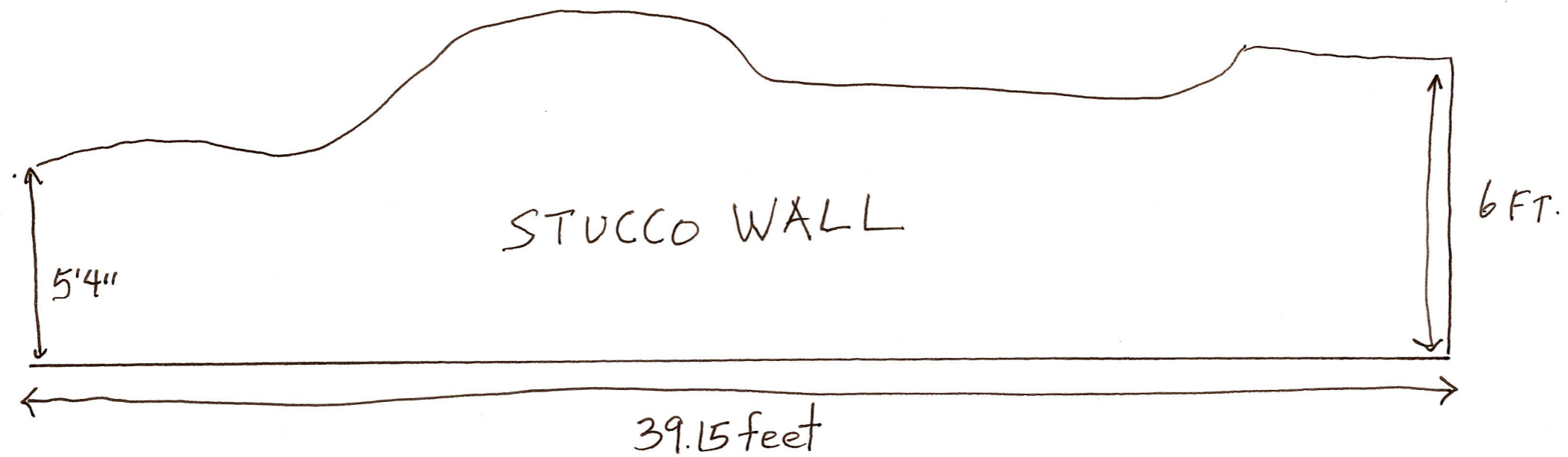
SCALE  
1/4" = 1'



SCALE: 1/4" = 1ft.



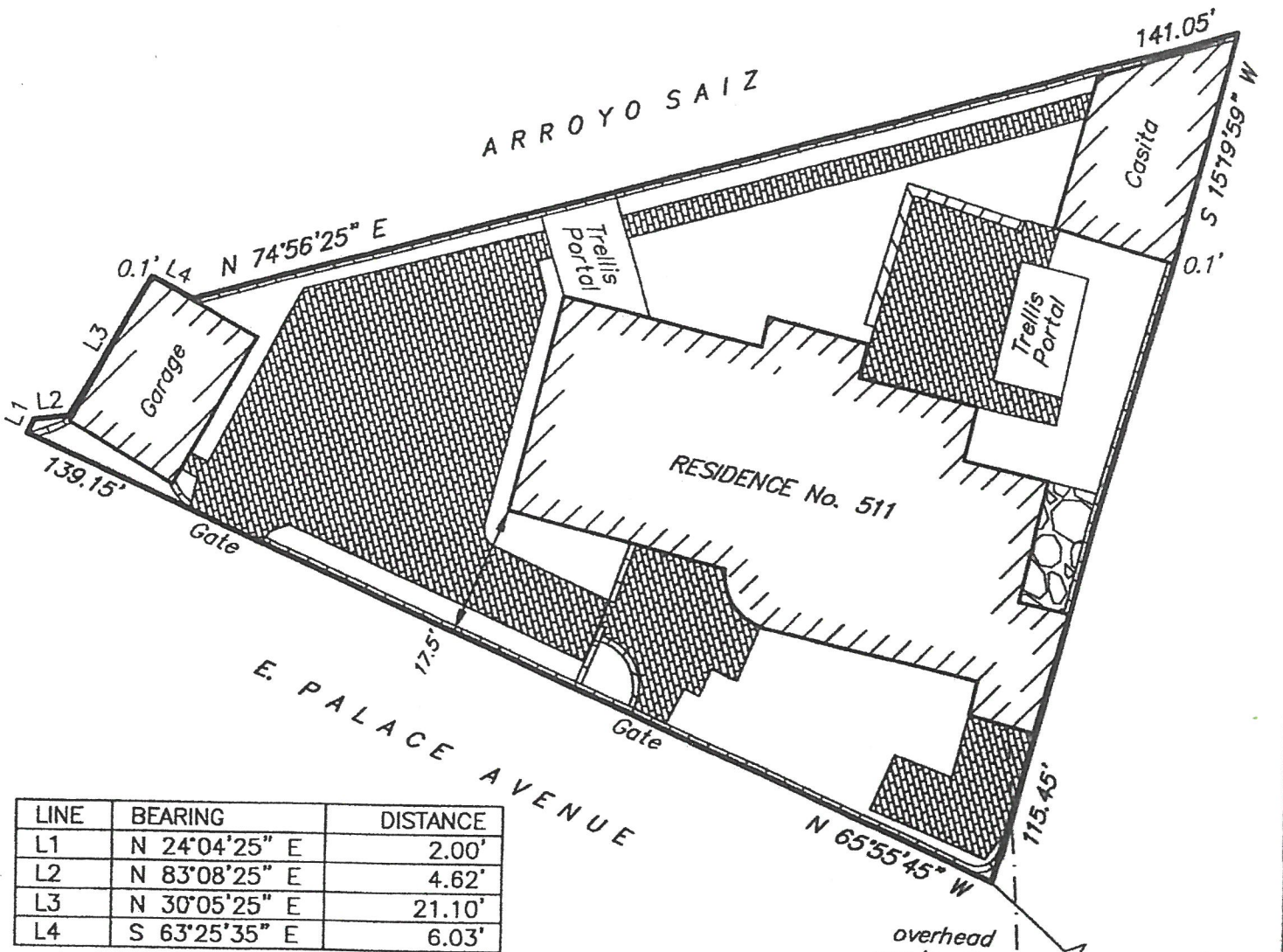
NORTHWEST ELEVATION  
"BEFORE"



"AFTER"

SCALE: 1/4" = 1 ft.

**THIS IS NOT A SURVEY FOR USE BY A PROPERTY OWNER FOR ANY PURPOSE.**



LINE	BEARING	DISTANCE
L1	N 24°04'25" E	2.00'
L2	N 83°08'25" E	4.62'
L3	N 30°05'25" E	21.10'
L4	S 63°25'35" E	6.03'

**LEGEND**

- Points found.
- Power poles.
- \* \* \* Fences.
- ▭ Walls.
- ▨ Flagstone.
- ▩ Brick
- Utility box.

N



SCALE: 1"=25'  
(EXPANDED)



The new gates we are proposing are a pair of vintage gates also made of wood, stained and sealed rather than painted. The design differs from the current gate in that there will be two rectangular doors that open in the middle, and the top will be straight across rather than arched. (See Photo #3) For strength and stability, these doors will be surrounded and held in a 1-inch steel frame (See Photo #4 of a different set of interior doors constructed in a steel frame) with 2-inch steel hinges (See Photo #5) attaching the steel frame to the wooden jam of the gate opening in the stucco wall (See Photo #2 again). The new doors, including their surrounding steel frame and adjusted for height, will have the same measurements as the current door, if it did not have an arch.

Each door has a very small, 2-inch diamond shaped design of wood in the top portion of the door, backed by glass on the inside of the design. (See Photo #3 again). We are having a steel grid hinged window constructed that will cover this glass portion on the street side of the door to block and protect the glass. (See Photo #6). The remaining top and sides and bottoms of the doors are decorated with a carved floral design in the wood. An aged steel lock and handle will secure the two doors in the middle, with entry possible from each direction, and a deadbolt lock installed on the inside for security.

### Driveway Gate:

The driveway gate is currently designed of vertical stained wooden boards with small wooden diamond cut-outs in random

patterns. It sits on top of a metal frame that is attached to an electric motor (See Photos #7 & 8). It measures 126 inches wide by 56 inches high.

We propose to keep the steel frame and motor assembly and simply replace the current vertical wooden boards with 4-inch rustic vertical wood boards (See an example of the style of proposed wood from a neighbor's driveway gate in Photo #9). The final measurement of the gate will be the same, at 126 inches wide by 56 inches high.

#### Garage Door:

We ask permission to update our existing garage door (See Photo #10) with new exterior paint in Benjamin Moore HC-67, Clinton Brown. (See sample #1)

#### Mailbox:

Currently, our mailbox is an old-fashioned galvanized box inserted in the exterior wall beside the pedestrian gate (Photo #2). We propose to remove this mailbox from the wall and repair the stucco. In its place, we ask permission to install a secure mailbox on a pole (similar to our neighbor's mailbox seen in Photo #11) in the setback location between our garage door and our driveway gate (See Photo #12).

### Brick Driveway:

Our existing driveway and parking courtyard are constructed of traditional Santa Fe style bricks with a soldier course surrounding the edge. Currently, there are several areas that have previously been repaired (the bricks are a different color), but they are now exhibiting sink holes, dips and rises, and missing bricks. (See Photos #13, 14 and 15) We are proposing to demolish the current brick courtyard, level and compound the underlying sub-strata, and replace the bricks with a pattern and color similar to what exists.

### Exterior Paint:

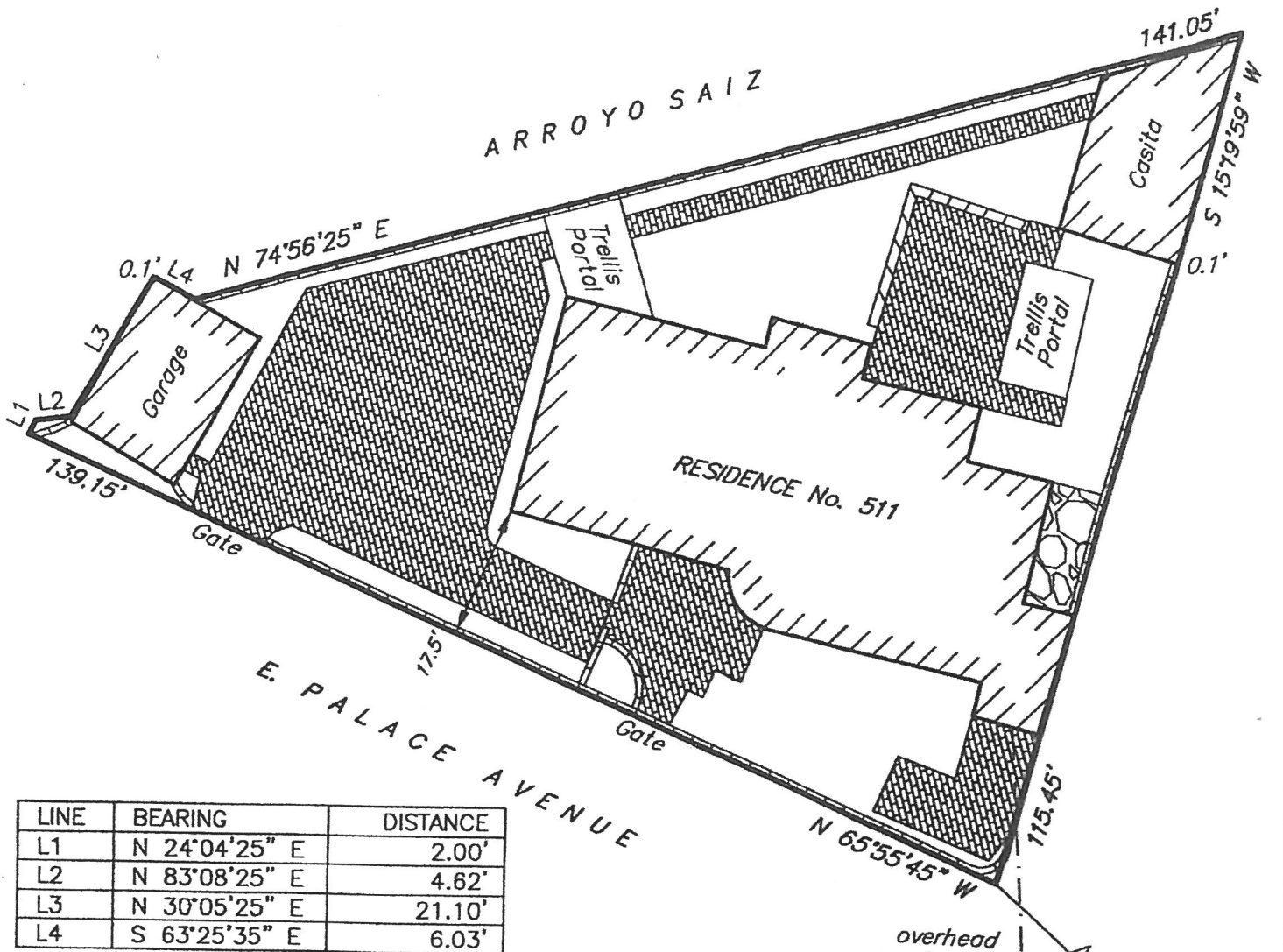
Currently, the exterior doors and windows of our home are painted turquoise, but they are deteriorated and peeling (See Photo #16). We propose to repaint all exterior doors, windows and trim with a turquoise shade that matches the existing paint color: Benjamin Moore 734, Tropical Teal. (See sample #2)

Thank you for considering our proposal. We look forward to hearing from you shortly.

Respectfully submitted,

Betty Holmes and Frederick Bryan

**THIS IS NOT A SURVEY FOR USE BY A PROPERTY OWNER FOR ANY PURPOSE.**



LINE	BEARING	DISTANCE
L1	N 24°04'25" E	2.00'
L2	N 83°08'25" E	4.62'
L3	N 30°05'25" E	21.10'
L4	S 63°25'35" E	6.03'

**LEGEND**

- Points found.
- Power poles.
- \* \* \* Fences.
- ▭ Walls.
- ▨ Flagstone.
- ▩ Brick
- Utility box.

overhead service lines



Sewer Manhole



SCALE: 1"=25'  
(EXPANDED)

**Paint Color Options:**

The home is currently painted in Sherwin Williams Turquoise, number SF-275741. One of our options is to match this paint color in a Benjamin Moore paint and repaint the exterior trim so that it stays the same color.



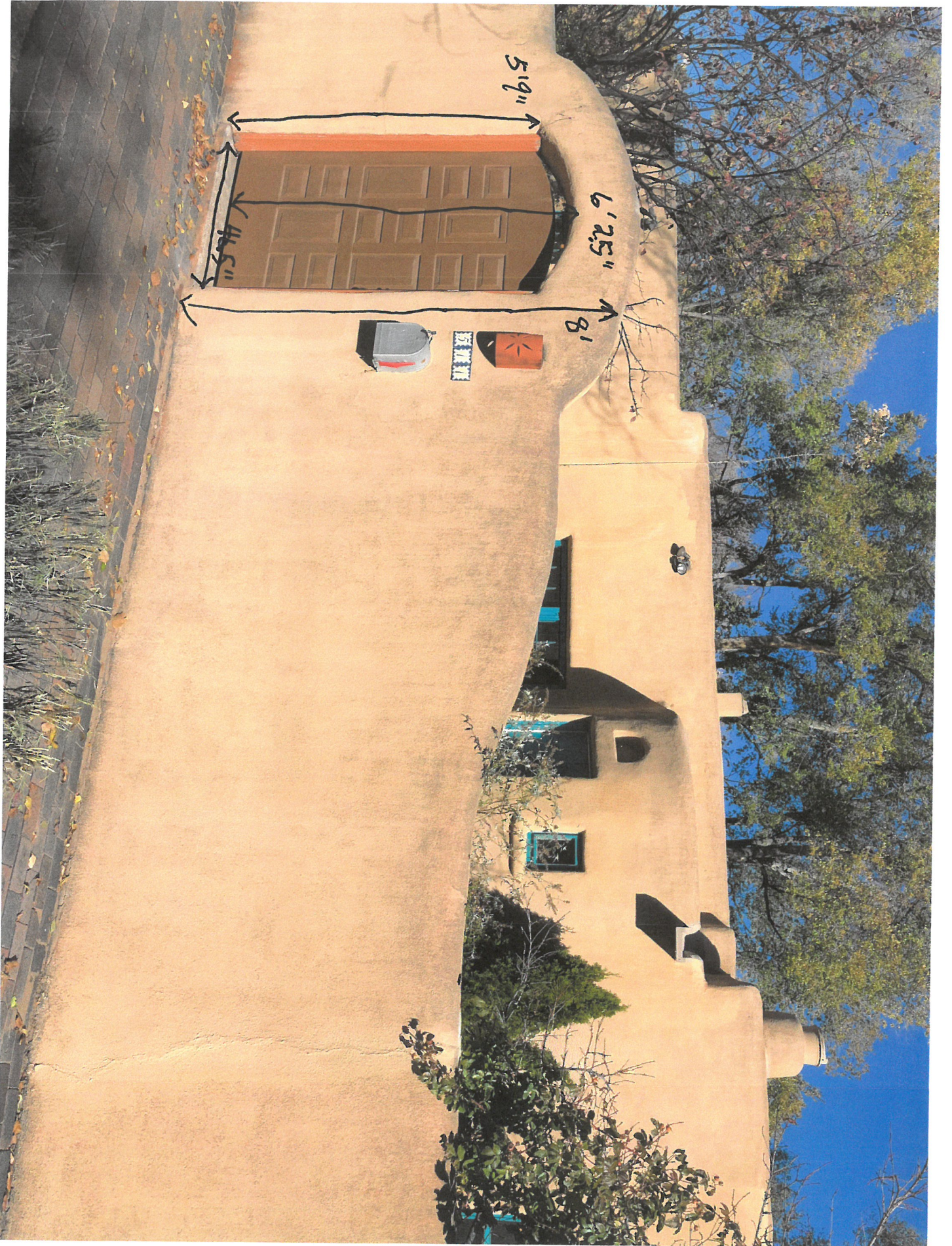


PHOTO #1



PHOTO# 2

We request permission to replace the existing door with these two antique gates, photo attached below:





PHOTO # 3

STEEL  
FRAME  
EXAMPLE  
ONLY

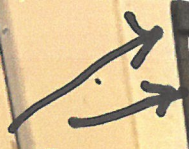


PHOTO #4



PHOTO #5



PHOTO #6



PHOTO #7

PHOTO # 8





PHOTO #9



PHOTO #10



PHOTO# 11



PHOTO #12



PHOTO 13



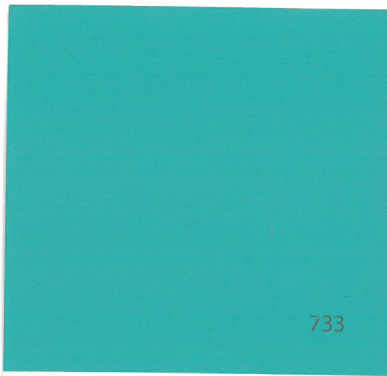
PHOTO 14



PHOTO 15



PHOTO #16



733



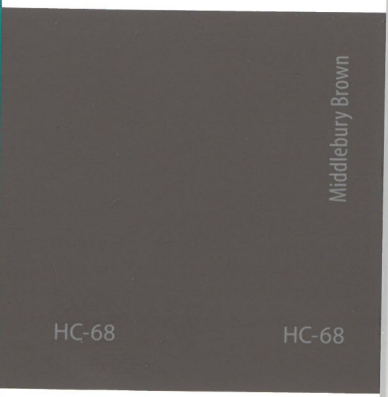
HC-69

HC-69

Whitall Brown



734



HC-68

HC-68

Middlebury Brown



735



HC-67

HC-67

Clinton Brown

 Benjamin Moore®

HC  Benjamin Moore® HC